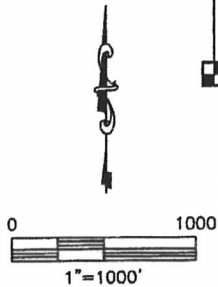
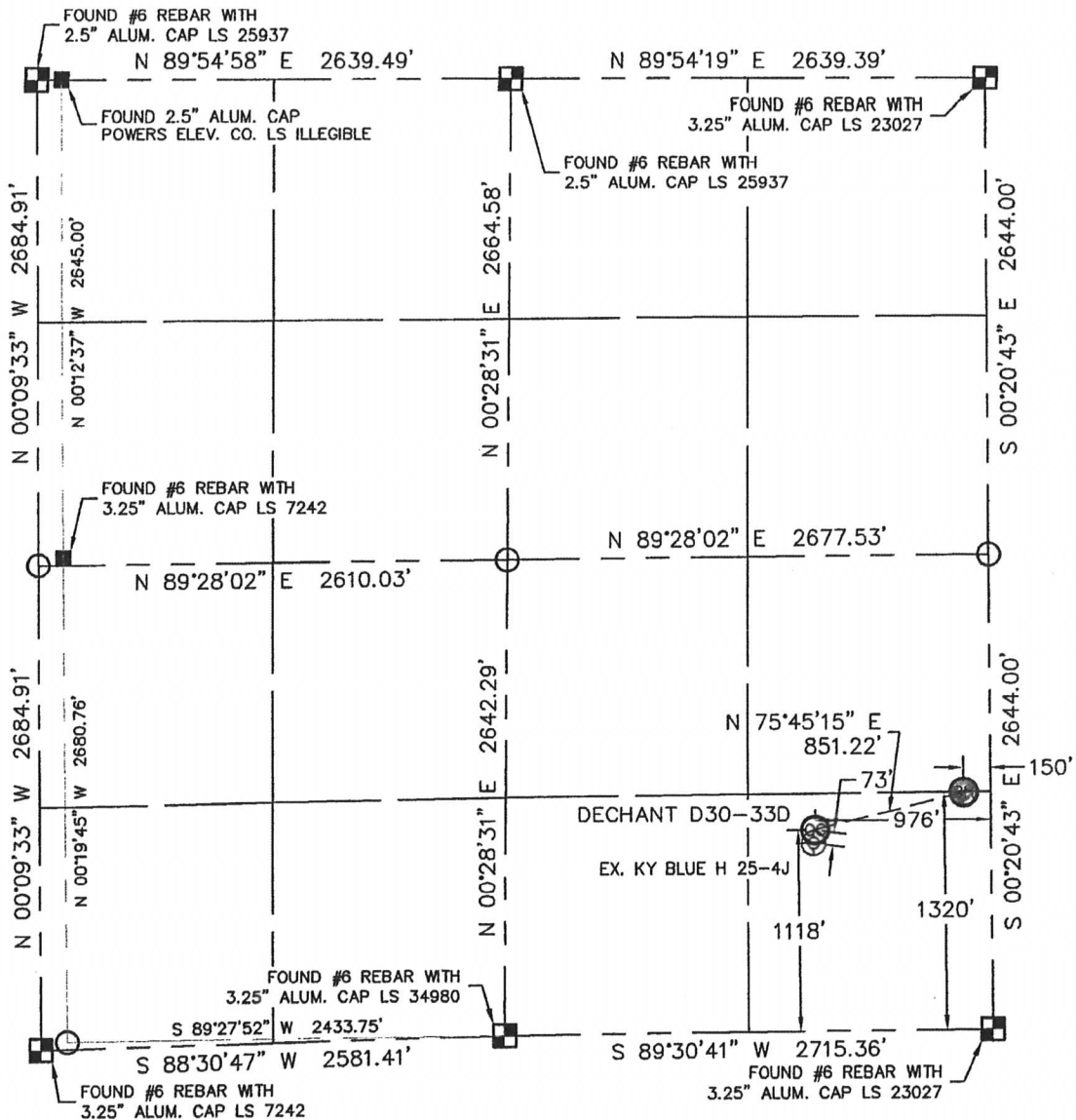


WELL LOCATION CERTIFICATE

THIS MAP DOES NOT REPRESENT A BOUNDARY SURVEY

SECTION: 25
TOWNSHIP: 3N
RANGE: 65W



In accordance with a request from CJ PIETRI with Noble Energy Inc. Lat40°, LLC has determined the surface location of the DECHANT D30-33D to be 1118' from the SOUTH line and 976' from the EAST line and the bottom hole to be 1320' from the SOUTH line and 150' from the EAST line as measured at right angles from the section lines of Section 25, Township 3 North, Range 65 West of the Sixth Principal Meridian, County of Weld, State of Colorado.

I hereby state that this Well Location Certificate was prepared by me, or under my direct supervision, that the fieldwork was completed on 11/9/10, for and on behalf of Noble Energy Inc. That this is not a Land Survey Plat or an Improvement Survey Plat, and that it is not to be relied upon for establishment of fence, building, or other future improvement lines.

NOTE:

- 1) Bearings shown are Grid Bearings of the Colorado State Plane Coordinate System, North Zone, North American Datum 1983/2007. The lineal dimensions as contained herein are based upon the "U.S. Survey Foot."
- 2) Ground elevations are based on an observed GPS elevation (NAVD 1988 DATUM).
- 3) NEAREST EXISTING WELL: KY BLUE H 25-4J 73'
- 4) IMPROVEMENTS: See LOCATION DRAWING for all visible improvements within 400' of disturbed area.
- 5) SURFACE USE: IRRIGATED CROP
- 6) INSTRUMENT OPERATOR: BRIAN BRINKMAN

SURFACE LOCATION
LATITUDE: 40.19195°N
LONGITUDE: 104.60629°W
PDOP: 2.2
ELEV: 4799'
1/4, 1/4: SE1/4SE1/4
NEAREST PROPERTY LINE: 976' EAST

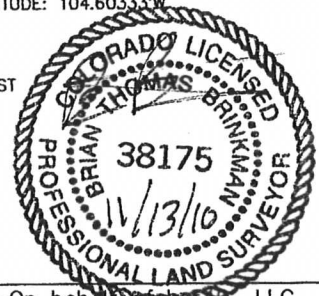
BOTTOM HOLE
LATITUDE: 40.19250°N
LONGITUDE: 104.60333°W

NOTE

According to Colorado law, you must commence any legal action based upon any defect in this W.L.C. within three years after you discover such defect. In no event, may any action based upon any defect in this survey be commenced more than ten years after the date of the certificate shown hereon. (13-80-105 C.R.S.)

LEGEND

- = ALIQUOT MONUMENT AS DESCRIBED
- = CALCULATED POSITION

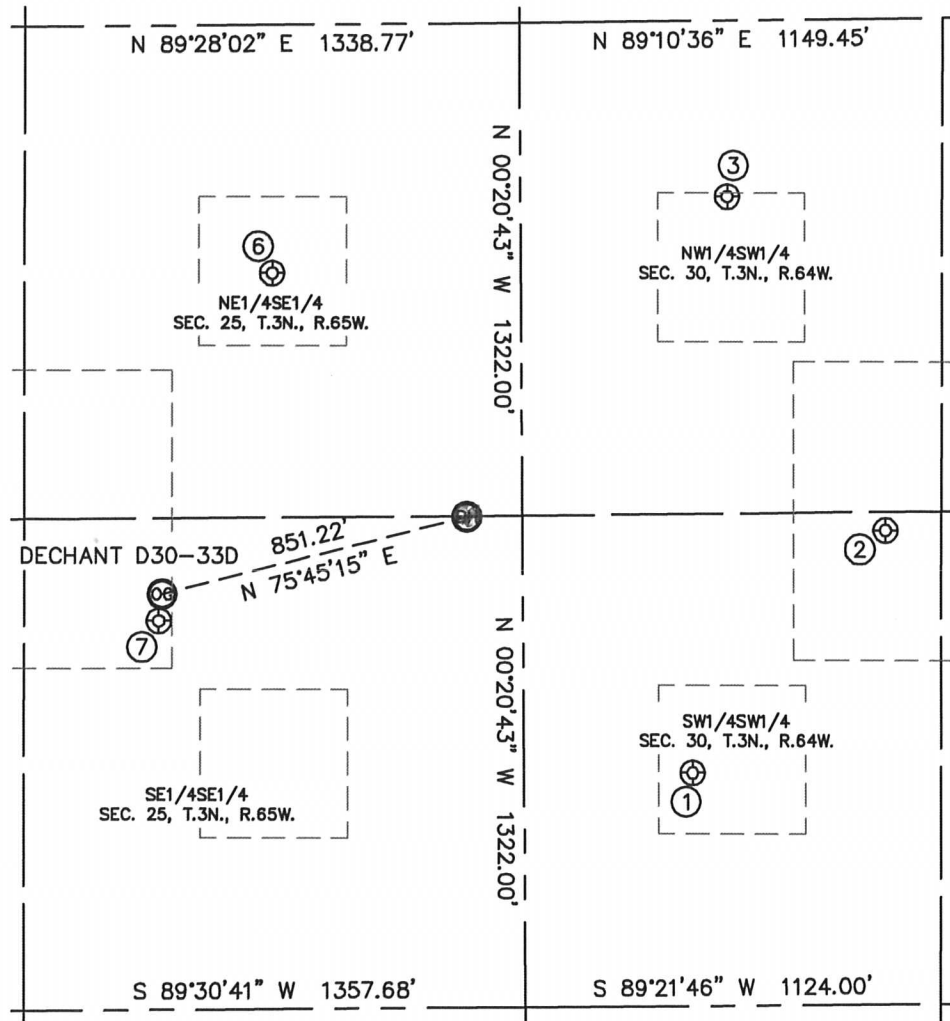


Brian T. Brinkman—On behalf of Lat40°, LLC
Colorado Licensed Professional
Land Surveyor No. 38175 PROJECT#: 2010143

SITE SKETCH

DECHANT D30-33D

SECTION: 25
TOWNSHIP: 3N
RANGE: 65W



①

HANSON D 30-13
SW1/4SW1/4
627' FSL
458' FWL
LAT-40.19060°N
LONG-104.60117°W
PDOP: 1.4
ELEV: 4801'

②

LESLIE E. HANSON
GAS UNIT 1
SW1/4SW1/4
1274' FSL
985' FWL
LAT-40.19238°N
LONG-104.59927°W
PDOP: 1.4
ELEV: 4798'

③

HANSON D 30-12
NW1/4SW1/4
2174' FSL
582' FWL
LAT-40.19485°N
LONG-104.60077°W
PDOP: 1.9
ELEV: 4794'

⑥

KY BLUE H 25-9
NE1/4SE1/4
1977' FSL
673' FEL
LAT-40.19431°N
LONG-104.60520°W
PDOP: 0.9
ELEV: 4797'

⑦

KY BLUE H 25-4J
SE1/4SE1/4
1046' FSL
986' FEL
LAT-40.19175°N
LONG-104.60633°W
PDOP: 2.9
ELEV: 4800'

