
OXY GRAND JUNCTION EBUSINESS

**SHELL 797-03-15B
GRAND VALLEY
Garfield County , Colorado**

Cement Surface Casing
30-Oct-2010

Post Job Report

The Road to Excellence Starts with Safety

Sold To #: 344034	Ship To #: 2816610	Quote #:	Sales Order #: 7721205
Customer: OXY GRAND JUNCTION EBUSINESS	Customer Rep: Silva, Marco		
Well Name: SHELL	Well #: 797-03-15B	API/UWI #: 05-045-17882	
Field: GRAND VALLEY	City (SAP): PARACHUTE	County/Parish: Garfield	State: Colorado
Lat: N 39.478 deg. OR N 39 deg. 28 min. 42.161 secs.	Long: W 108.202 deg. OR W -109 deg. 47 min. 52.98 secs.		
Contractor: NABORS M-37	Rig/Platform Name/Num: NABORS M-37		
Job Purpose: Cement Surface Casing			
Well Type: Development Well	Job Type: Cement Surface Casing		
Sales Person: DUNNING, DUSTIN	Srvc Supervisor: STILLSON, ERIC	MBU ID Emp #: 393789	

Job Personnel

HES Emp Name	Exp Hrs	Emp #	HES Emp Name	Exp Hrs	Emp #	HES Emp Name	Exp Hrs	Emp #
BROWN, TRAVIS A	9	396848	STILLSON, ERIC W	9	393789	WEAVER, CARLTON Russell	9	457698
WINKER, STEVEN	9	478776						

Equipment

HES Unit #	Distance-1 way	HES Unit #	Distance-1 way	HES Unit #	Distance-1 way	HES Unit #	Distance-1 way
10616651C	120 mile	10783493	120 mile	10822007	120 mile	10951251	120 mile
10995025	120 mile						

Job Hours

Date	On Location Hours	Operating Hours	Date	On Location Hours	Operating Hours	Date	On Location Hours	Operating Hours
10-30-10	9	2						

TOTAL Total is the sum of each column separately

Job

Job Times

Formation Name	Formation Depth (MD)	Top	Bottom	Called Out	Date	Time	Time Zone
Form Type			BHST	On Location	30 - Oct - 2010	14:00	MST
Job depth MD	1293. ft		Job Depth TVD	Job Started	30 - Oct - 2010	20:17	MST
Water Depth			Wk Ht Above Floor	Job Completed	30 - Oct - 2010	21:32	MST
Perforation Depth (MD)	From		To	Departed Loc	30 - Oct - 2010	23:30	MST

Well Data

Description	New / Used	Max pressure psig	Size in	ID in	Weight lbm/ft	Thread	Grade	Top MD ft	Bottom MD ft	Top TVD ft	Bottom TVD ft
OPEN HOLE SECTION				12.25				.	1320.		
SURFACE CASING	Unknown		9.625	8.921	36.			.	1293.		

Sales/Rental/3rd Party (HES)

Description	Qty	Qty uom	Depth	Supplier
PLUG,CMTG,TOP,9 5/8,HWE,8.16 MIN/9.06 MA	1	EA		
R/A DENSOMETER W/CHART RECORDER,/JOB,ZI	1	JOB		
PORT. DATA ACQUIS. W/OPTICEM RT W/HES	1	EA		
ADC (AUTO DENSITY CTRL) SYS, /JOB,ZI	1	JOB		

Tools and Accessories

Type	Size	Qty	Make	Depth	Type	Size	Qty	Make	Depth	Type	Size	Qty	Make
Guide Shoe					Packer					Top Plug	9.625	1	
Float Shoe					Bridge Plug					Bottom Plug			
Float Collar					Retainer					SSR plug set			
Insert Float										Plug Container	9.625	1	
Stage Tool										Centralizers			

Miscellaneous Materials													
Gelling Agt		Conc		Surfactant		Conc		Acid Type		Qty		Conc	%
Treatment Fld		Conc		Inhibitor		Conc		Sand Type		Size		Qty	
Fluid Data													
Stage/Plug #: 1													
Fluid #	Stage Type	Fluid Name			Qty	Qty uom	Mixing Density lbm/gal	Yield ft3/sk	Mix Fluid Gal/sk	Rate bbl/min	Total Mix Fluid Gal/sk		
1	Water Spacer				20.00	bbl	8.33	.0	.0	6.0			
2	Gel Spacer				20.00	bbl	8.4	.0	.0	6.0			
3	Water Spacer				20.00	bbl	8.33	.0	.0	6.5			
4	Lead Cement	VERSACEM (TM) SYSTEM (452010)			200.0	sacks	12.3	2.38	13.75	6.5			
5	Tail Cement	SWIFTCES (TM) SYSTEM (452990)			80.0	sacks	14.2	1.43	6.88	6.5	6.88		
6.88 Gal		FRESH WATER											
6	Displacement				96.00	bbl	8.33	.0	.0	6.5			
Calculated Values		Pressures			Volumes								
Displacement	96.3	Shut In: Instant			Lost Returns		0	Cement Slurry		104	Pad		
Top Of Cement	SURFACE	5 Min			Cement Returns		14	Actual Displacement		96	Treatment		
Frac Gradient		15 Min			Spacers		60	Load and Breakdown			Total Job		
Rates													
Circulating	RIG	Mixing		6.5		Displacement		6.5		Avg. Job		6.5	
Cement Left In Pipe		Amount	47 ft	Reason	Shoe Joint								
Frac Ring # 1 @		ID		Frac ring # 2 @		ID		Frac Ring # 3 @		ID		Frac Ring # 4 @	
The Information Stated Herein Is Correct					Customer Representative Signature								

The Road to Excellence Starts with Safety

Sold To #: 344034		Ship To #: 2816610		Quote #:		Sales Order #: 7721205	
Customer: OXY GRAND JUNCTION EBUSINESS				Customer Rep: Silva, Marco			
Well Name: SHELL			Well #: 797-03-15B			API/UWI #: 05-045-17882	
Field: GRAND VALLEY		City (SAP): PARACHUTE		County/Parish: Garfield		State: Colorado	
Legal Description:							
Lat: N 39.478 deg. OR N 39 deg. 28 min. 42.161 secs.				Long: W 108.202 deg. OR W -109 deg. 47 min. 52.98 secs.			
Contractor: NABORS M-37			Rig/Platform Name/Num: NABORS M-37				
Job Purpose: Cement Surface Casing						Ticket Amount:	
Well Type: Development Well			Job Type: Cement Surface Casing				
Sales Person: DUNNING, DUSTIN			Srvc Supervisor: STILLSON, ERIC			MBU ID Emp #: 393789	

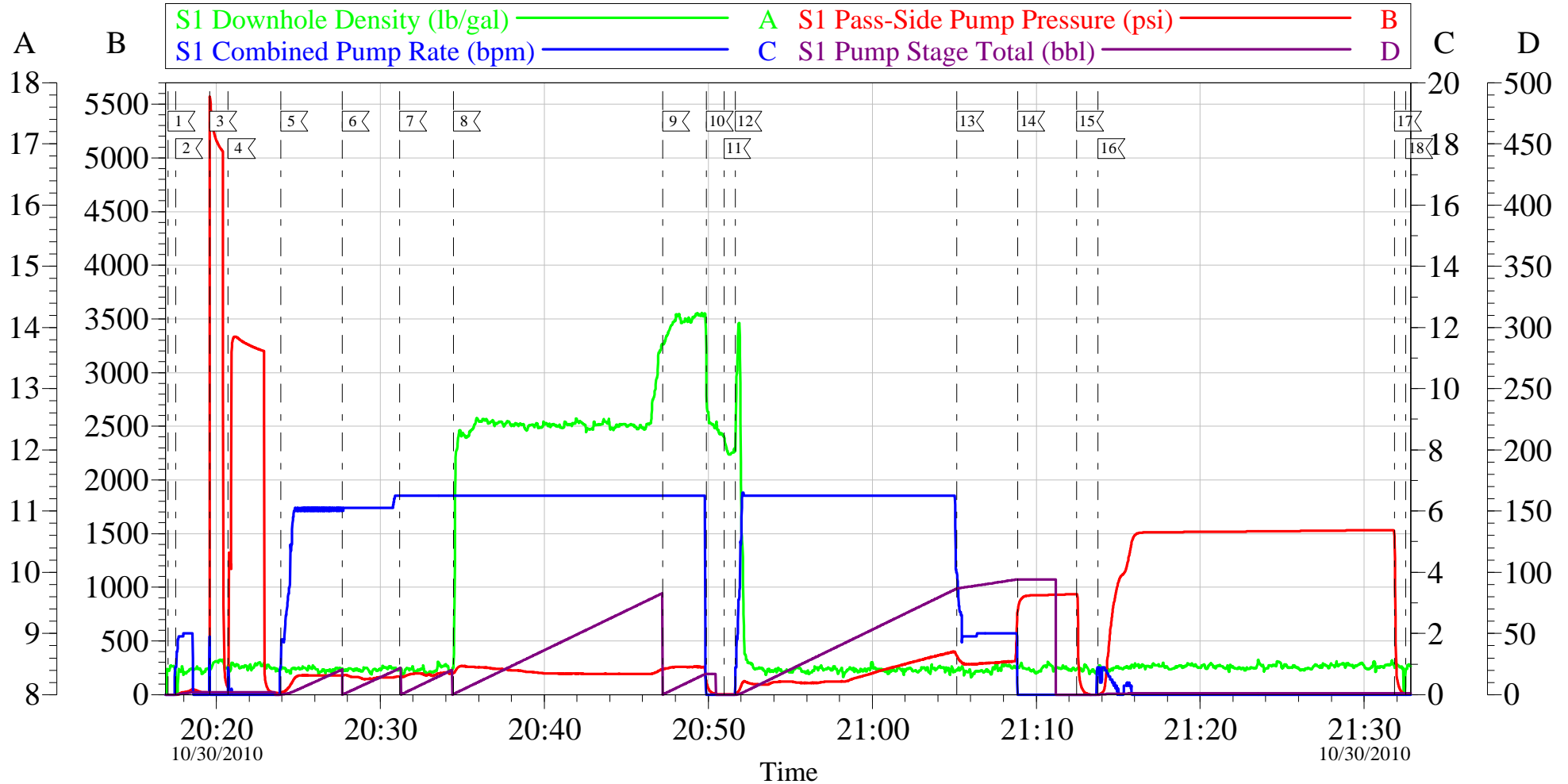
Activity Description	Date/Time	Cht #	Rate bbl/min	Volume bbl		Pressure psig		Comments
				Stage	Total	Tubing	Casing	
Call Out	10/30/2010 09:00							9 5/8 SURFACE, OXY, NABORS M-37
Pre-Convoy Safety Meeting	10/30/2010 12:30							ENTIRE CREW, OBSERVE ALL SAFE DRIVING PROCEDURES
Arrive At Loc	10/30/2010 14:00							ARRIVED EARLY. RIG NOT YET STARTED CASING.
Assessment Of Location Safety Meeting	10/30/2010 14:10							REVIEWED EMERGENCY PLAN, ASSESSED WORK AREA AND SPOTTED EQUIPMENT.
Pre-Rig Up Safety Meeting	10/30/2010 14:50							ENTIRE CREW, WALKED THROUGH RIG UP LOOKING FOR HAZARDS.
Rig-Up Equipment	10/30/2010 15:00							1 PICK UP, 1 HT400 PUMP TRUCK, 1 660 BULK CEMENT TRUCK, 1 QUICK LATCH HEAD WITH PLUG,
Pre-Job Safety Meeting	10/30/2010 19:50							ENTIRE CREW, CO REP AND RIG CREW.
Start Job	10/30/2010 20:17							TD 1320 TP 1293 SJ 47 FC 1246 MW 9.2 PPG, 9 5/8 36# CASING IN 12 1/4 HOLE. RIG CIRC APPROX 0:45 MIN, YP 10 , PV 12 ,TEMP 65, NO GAS.
Pump Water	10/30/2010 20:17		2	2			50.0	FILL LINES BEFORE TESTING

Activity Description	Date/Time	Cht #	Rate bbl/min	Volume bbl		Pressure psig		Comments
				Stage	Total	Tubing	Casing	
Pressure Test	10/30/2010 20:19		0.5	0.1			5600.0	PRESSURE JUMPED UP QUICKLY TO 5600 PSI DUE TO THROTTLE ON PUMP IDLED UP A LITTLE WHEN PUMPS ENGAGED, RELEASED PRESSURE TO RETEST.
Test Lines	10/30/2010 20:20		0.5	0.1			3330.0	HELD PRESSURE FOR 2 MIN, PRESSURE HELD, NO LEAKS.
Pump Spacer 1	10/30/2010 20:23		6	20			180.0	FRESH WATER, AFTER GAINING RETURNS BROUGHT CEMENT TUB UP TO WEIGHT AND WEIGHED WITH SCALES.
Pump Spacer 2	10/30/2010 20:27		6	20			180.0	GEL SPACER, 20 BBLS WATER WITH 3 GAL LGC 35 MIXED IN TANKS, DID NOT USE TUFF FIBER PER CO REP HOWEVER CO REP WANTED TUFF FIBER LEFT ON LOCATION AND CHARGED ON TICKET. 30 LBS, 2 BOXES.
Pump Spacer 1	10/30/2010 20:31		6.5	20			190.0	FRESH WATER, SPED RATE TO 6.5 BPM AT 10 BBLS GONE.
Pump Lead Cement	10/30/2010 20:34		6.5	84			230.0	200 SKS VERSACEM, 12.3 PPG, 2.38 CUFT/SK, 13.77 GAL/SK.
Pump Tail Cement	10/30/2010 20:47		6.5	20			248.0	80 SKS SWIFTCM, 14.2 PPG, 1.43 CUFT/SK, 6.85 GAL/SK.
Shutdown	10/30/2010 20:49							
Drop Top Plug	10/30/2010 20:50							VARIFIED PLUG LEFT CONTAINER.

Activity Description	Date/Time	Cht #	Rate bbl/ min	Volume bbl		Pressure psig		Comments
				Stage	Total	Tubing	Casing	
Pump Displacement	10/30/2010 20:51		6.5	96			380.0	FRESH WATER, CEMENT TO SURFACE AT 82 BBLS GONE, 14 BBLS OF CEMENT TO SURFACE. USED 60 LBS SUGAR.
Slow Rate	10/30/2010 21:05		2	86			320.0	SLOWED RATE TO 2 BPM TO BUMP PLUG.
Bump Plug	10/30/2010 21:08		2	96			920.0	PLUG LANDED AT 320 PSI, BUMPED UP TO 920 PSI AND HELD FOR 4 MIN PER CO REP.
Check Floats	10/30/2010 21:12							FLOATS HELD, WHEN RELEASED PRESSURE GOT 3/4 BBL OF WATER BACK TO TRUCK.
Pressure Up	10/30/2010 21:13		0.5	0.75			1500. 0	PRESSURE UP TO TEST CASING PER CO REP. HOLD 15 MIN.
Release Casing Pressure	10/30/2010 21:31							RELEASED PRESSURE AT 1530 PSI.
End Job	10/30/2010 21:32							GOOD RETURNS THROUGHOUT, DID NOT RECIPROCATATE PIPE.
Post-Job Safety Meeting (Pre Rig-Down)	10/30/2010 21:35							ENTIRE CREW
Rig-Down Equipment	10/30/2010 22:15							
Pre-Convoy Safety Meeting	10/30/2010 23:15							ENTIRE CREW, OBSERVE ALL SAFE DRIVING PROCEDURES
Crew Leave Location	10/30/2010 23:30							THANK YOU FOR USING HALLIBURTON, ERIC STILLSON AND CREW.

OXY

9 5/8 SURFACE



Local Event Log					
1	START JOB	20:17:04	2	FILL LINES	20:17:32
3	TEST LINES	20:19:35	4	RETEST LINES	20:20:44
5	PUMP H2O SPACER	20:23:56	6	PUMP GEL SPACER	20:27:40
7	PUMP H2O SPACER	20:31:11	8	PUMP LEAD CEMENT	20:34:28
9	PUMP TAIL CEMENT	20:47:13	10	SHUTDOWN	20:49:53
11	DROP PLUG	20:50:57	12	PUMP DISPLACEMENT	20:51:38
13	SLOW RATE	21:05:09	14	BUMP PLUG	21:08:53
15	CHECK FLOATS	21:12:28	16	CASING TEST	21:13:46
17	RELEASE PRESSURE	21:31:51	18	END JOB	21:32:33

Customer: OXY	Job Date: 30-Oct-2010	Sales Order #: 7721205
Well Description: SHELL 797-03-15B	Job Type: SURFACE	ADC Used: YES
Company Rep: MARCO SILVA	Cement Supervisor: ERIC STILLSON	Elite #: 4 RUSTY WEAVER

OptiCem v6.4.2
30-Oct-10 21:44