

**OXY GRAND JUNCTION EBUSINESS  
DO NOT MAIL  
BROWNFIELD, Texas**

Shell 797-03-37

H&P Drilling/M/-37

## **Post Job Summary Cement Surface Casing**

Prepared for: CURT CLAUSSEN  
Date Prepared: 12/19/10  
Version: 1

Service Supervisor: JAMISON, PRICE

Submitted by:

**HALLIBURTON**

## The Road to Excellence Starts with Safety

Sold To #: 344034	Ship To #: 2826414	Quote #:	Sales Order #: 7849095
Customer: OXY GRAND JUNCTION EBUSINESS	Customer Rep: CLAUSSEN, CURT		
Well Name: Shell	Well #: 797-03-37	API/UWI #:	
Field: Piceance Creek	City (SAP): BROWNFIELD	County/Parish: Garfield	State: Colorado
Contractor: H&P Drilling	Rig/Platform Name/Num: M-37		
Job Purpose: Cement Surface Casing			
Well Type: Development Well	Job Type: Cement Surface Casing		
Sales Person: DUNNING, DUSTIN	Srv Supervisor: JAMISON, PRICE	MBU ID Emp #:	229155

## Job Personnel

HES Emp Name	Exp Hrs	Emp #	HES Emp Name	Exp Hrs	Emp #	HES Emp Name	Exp Hrs	Emp #
BANKS, BRENT A	8	371353	JAMISON, PRICE W	8	229155	KUKUS, CHRISTOPHER A	8	413952

## Equipment

HES Unit #	Distance-1 way	HES Unit #	Distance-1 way	HES Unit #	Distance-1 way	HES Unit #	Distance-1 way
10296152	40 mile	10867304	40 mile	10897797	40 mile	10998054	40 mile
11259881	40 mile						

## Job Hours

Date	On Location Hours	Operating Hours	Date	On Location Hours	Operating Hours	Date	On Location Hours	Operating Hours
12/19/10	8	3.75						

TOTAL Total is the sum of each column separately

## Job

## Job Times

Formation Name					Date	Time	Time Zone	
Formation Depth (MD)	Top		Bottom		Called Out	19 - Dec - 2010	04:45	MST
Form Type			BHST		On Location	19 - Dec - 2010	10:00	MST
Job depth MD	1034. ft		Job Depth TVD	1055. ft	Job Started	19 - Dec - 2010	00:00	MST
Water Depth			Wk Ht Above Floor	4. ft	Job Completed	19 - Dec - 2010	00:00	MST
Perforation Depth (MD)	From		To		Departed Loc	19 - Dec - 2010	00:00	MST

## Well Data

Description	New / Used	Max pressure psig	Size in	ID in	Weight lbf/ft	Thread	Grade	Top MD ft	Bottom MD ft	Top TVD ft	Bottom TVD ft
OPEN HOLE				12.25					1055.		1055.
SURFACE CASING	Unknown		9.625	8.921	36.		J-55		1034.		1034.

Sales/Rental/3<sup>rd</sup> Party (HES)

Description	Qty	Qty uom	Depth	Supplier
PLUG,CMTG,TOP,9 5/8,HWE,8.16 MIN/9.06 MA	1	EA		

## Tools and Accessories

Type	Size	Qty	Make	Depth	Type	Size	Qty	Make	Depth	Type	Size	Qty	Make
Guide Shoe					Packer					Top Plug			
Float Shoe					Bridge Plug					Bottom Plug			
Float Collar					Retainer					SSR plug set			
Insert Float										Plug Container			
Stage Tool										Centralizers			

## Miscellaneous Materials

Gelling Agt	Conc	Surfactant	Conc	Acid Type	Qty	Conc	%
Treatment Fld	Conc	Inhibitor	Conc	Sand Type	Size	Qty	

Fluid Data									
Stage/Plug #: 1									
Fluid #	Stage Type	Fluid Name	Qty	Qty uom	Mixing Density lbm/gal	Yield ft <sup>3</sup> /sk	Mix Fluid Gal/sk	Rate bbl/min	Total Mix Fluid Gal/sk
1	Water Spacer		10.00	bbl	8.4	.0	.0	5.0	
2	Gel Water Spacer		20.00	bbl	8.4	.0	.0	5.0	
3	Water Spacer		10.00	bbl	8.4	.0	.0	5.0	
4	LEAD CEMENT	VERSACEM (TM) SYSTEM (452010)	146.0	sacks	12.3	2.38	13.76	5.0	13.76
	13.76 Gal	FRESH WATER							
5	TAIL CEMENT	SWIFTCES (TM) SYSTEM (452990)	87.0	sacks	14.2	1.43	6.85	5.0	6.85
	6.85 Gal	FRESH WATER							
6	Displacement		76.4	bbl	8.4	.0	.0	5.0	
Calculated Values		Pressures		Volumes					
Displacement	76	Shut In: Instant		Lost Returns	NO	Cement Slurry	84	Pad	
Top Of Cement	SURFACE	5 Min		Cement Returns	20	Actual Displacement	76	Treatment	
Frac Gradient		15 Min		Spacers	40	Load and Breakdown		Total Job	200
Rates									
Circulating	5	Mixing	5	Displacement	5	Avg. Job	5		
Cement Left In Pipe	Amount	46.1 ft	Reason	Shoe Joint					
Frac Ring # 1 @	ID	Frac ring # 2 @	ID	Frac Ring # 3 @	ID	Frac Ring # 4 @	ID		
The Information Stated Herein Is Correct				Customer Representative Signature					

*The Road to Excellence Starts with Safety*

<b>Sold To #:</b> 344034		<b>Ship To #:</b> 2826414		<b>Quote #:</b>		<b>Sales Order #:</b> 7849095	
<b>Customer:</b> OXY GRAND JUNCTION EBUSINESS				<b>Customer Rep:</b> CLAUSSEN, CURT			
<b>Well Name:</b> Shell		<b>Well #:</b> 797-03-37		<b>API/UWI #:</b>			
<b>Field:</b> Piceance Creek		<b>City (SAP):</b> BROWNFIELD		<b>County/Parish:</b> Garfield		<b>State:</b> Colorado	
<b>Legal Description:</b>							
<b>Lat:</b> N 0 deg. OR N 0 deg. 0 min. 0 secs.				<b>Long:</b> E 0 deg. OR E 0 deg. 0 min. 0 secs.			
<b>Contractor:</b> H&P Drilling		<b>Rig/Platform Name/Num:</b> M-37					
<b>Job Purpose:</b> Cement Surface Casing						<b>Ticket Amount:</b>	
<b>Well Type:</b> Development Well		<b>Job Type:</b> Cement Surface Casing					
<b>Sales Person:</b> DUNNING, DUSTIN		<b>Srv Supervisor:</b> JAMISON, PRICE		<b>MBU ID Emp #:</b> 229155			

Activity Description	Date/Time	Cht #	Rate bbl/ min	Volume bbl		Pressure psig		Comments
				Stage	Total	Tubing	Casing	
Call Out	12/19/2010 04:45							TD 1055 HOLE SIZE 12.25 TP 1034 SHOE JOINT 46.15 CASING 9.625 36# J-55 MUD 9.1 PPG
Depart Yard Safety Meeting	12/19/2010 07:45							
Crew Leave Yard	12/19/2010 08:00							
Arrive At Loc	12/19/2010 10:00							
Assessment Of Location Safety Meeting	12/19/2010 10:10							
Wait on Customer or Customer Sub-Contractor Equip	12/19/2010 10:15							RUNNING CASING AND CIRCULATING
Wait on Customer or Customer Sub-Contractor Equipm	12/19/2010 11:00							
Pre-Rig Up Safety Meeting	12/19/2010 11:20							
Pre-Job Safety Meeting	12/19/2010 12:20							
Start Job	12/19/2010 13:11							
Prime Pumps	12/19/2010 13:12		2	2			81.0	FRESH WATER
Test Lines	12/19/2010 13:13						2000. 0	
Pump Spacer 1	12/19/2010 13:20		5	10			127.0	FRESH WATER
Pump Spacer 2	12/19/2010 13:24		5	20			127.0	GEL WATER
Pump Spacer 1	12/19/2010 13:28		5	10			118.0	FRESH WATER

Sold To # : 344034

Ship To # :2826414

Quote # :

Sales Order # :

7849095

SUMMIT Version: 7.20.130

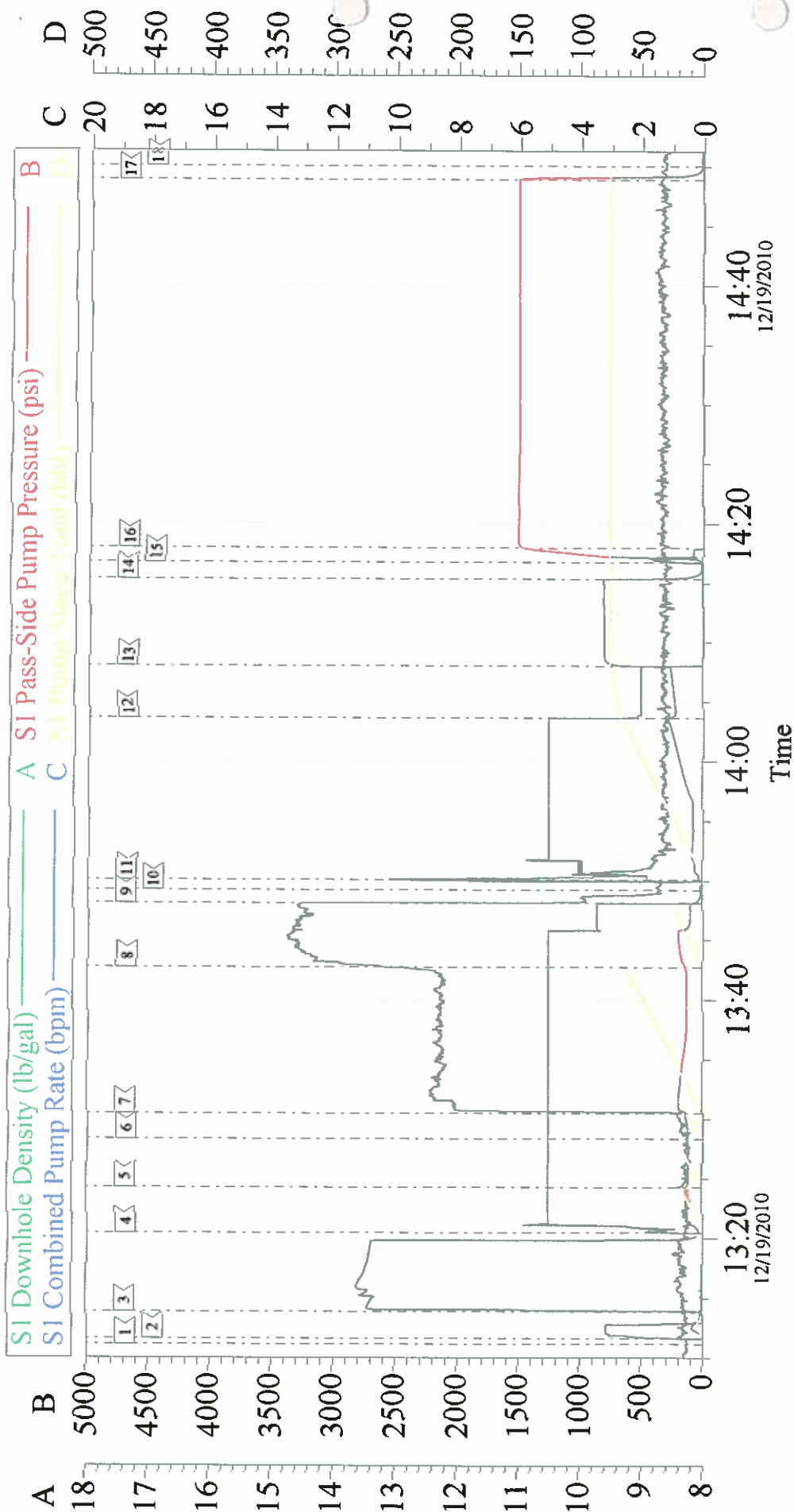
Sunday, December 19, 2010 04:16:00



## Cementing Job Log

Activity Description	Date/Time	Cht #	Rate bbl/min	Volume bbl		Pressure psig		Comments
				Stage	Total	Tubing	Casing	
Pump Lead Cement	12/19/2010 13:30		5	61.9			118.0	MIXED @ 12.3 PPG YIELD 2.38 WAT/REQ 13.77 146 SKS
Pump Tail Cement	12/19/2010 13:42		5	22.1			187.0	MIXED @ 14.2 PPG YIELD 1.43 WAT/REQ 6.85 87 SKS
Shutdown	12/19/2010 13:48							
Drop Plug	12/19/2010 13:49							
Pump Displacement	12/19/2010 13:50		5					FRESH WATER
Slow Rate	12/19/2010 14:03		2	66			260.0	
Bump Plug	12/19/2010 14:08		2	76			260.0	PRESSURED UP TO PSI 803
Check Floats	12/19/2010 14:15							FLOATS HELD
Pressure Up Well	12/19/2010 14:16						1500. 0	
Monitor Pressure	12/19/2010 14:17							30 MIN
Release Casing Pressure	12/19/2010 14:48						1500. 0	CASING WAS NOT MOVED THROUGHOUT JOB
End Job	12/19/2010 14:50							CEMENT BACK TO SURFACE 20 BBLS
Post-Job Safety Meeting (Pre Rig-Down)	12/19/2010 15:00							GOOD CIRCULATION THROUGHOUT JOB
Depart Location Safety Meeting	12/19/2010 15:50							
Crew Leave Location	12/19/2010 16:00							THANKS FOR USING HALLIBURTON BILL JAMISON & CREW

# OXY 9.625 SURFACE CASING



Local Event Log								
1	START JOB	13:11:08	2	PRIME LINES	13:11:37	3	TEST LINES	13:13:53
4	START FRESH WATER SPACER	13:20:28	5	START GEL SPACER	13:24:15	6	START FRESH WATER SPACER	13:28:20
7	START LEAD CEMENT	13:30:29	8	START TAIL CEMENT	13:42:45	9	SHUT DOWN	13:48:07
10	DROP PLUG	13:49:12	11	START DISPLACEMENT	13:50:05	12	SLOW RATE	14:03:39
13	BUMP PLUG	14:08:01	14	CHECK FLOATS	14:15:20	15	START CASING TEST	14:16:43
16	WATCH PRESSURE	14:17:58	17	RELEASE PRESSURE	14:48:53	18	END JOB	14:50:01

Customer:	OXY	Job Date:	19-Dec-2010	Sales Order #:	7849095
Well Description:	SHELL 797-03-37	Job Type:	CEMENT	ADC Used:	YES
Company Rep:	KURT CLAUSSEN	Cement Supervisor:	BILL JAMISON	Elite #:	9 BRENT BANKS