



COMPENSATED DENSITY
COMPENSATED NEUTRON
DUAL INDUCTION

PHOENIX SURVEYS, INC.

Company Merit Energy Company		LocationSHL: 1831' FNL & 2120' FEL SW NE		Other ServicesNone	
Well McLeod 7		BH: 1157' FNL & 2635' FEL			
Field Wattenberg		Sec. 29, Twp. 4N, Rge. 66W			
County Weld		State/Province Colorado			
Permanent Datum		GL	Elevation	K.B. 4776	
Log Measured From		KB		D.F. 4775	
Drilling Measured From		KB		G.L. 4760	
Date		March 27, 2007			
Run Number		1			
Depth Driller		7566			
Depth Logger		7507			
Bottom Logged Interval		7507			
Top Log Interval		Casing			
Casing Driller		421			
Casing Logger		421			
Bit Size		7-7/8"			
Type Fluid in Hole		Chem Gel			
Density / Viscosity		9.7 / 54			
pH / Fluid Loss		8.0 / 8.8			
Source of Sample		Flowline			
Rmt @ Meas. Temp		3.18 @ 70° F			
Rmt @ Meas. Temp		2.54 @ 70° F			
Rmt @ Meas. Temp		3.83 @ 70° F			
Source of Rmt / Rmc		Measure / Calc			
Rm @ BHT		1.23 @ 203° F			
Time Circulation Stopped		0800			
Time Logger on Bottom		1500			
Maximum Recorded Temperature		203° F			
Equipment Number		4300			
Location		Brighton, CO			
Recorded By		Ian Harris			
Witnessed By		Dik Son			

<<< Fold Here >>>

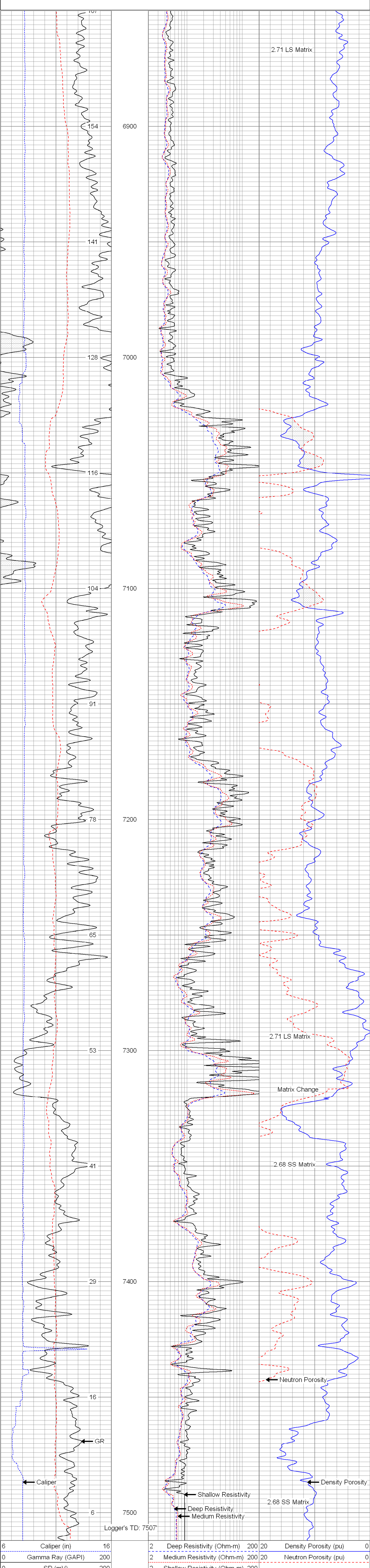
All interpretations are opinions based on inferences from electrical or other measurements and we cannot and do not guarantee the accuracy or correctness of any interpretation, and we shall not, except in the case of gross or willful negligence on our part, be liable or responsible for any loss, costs, damages, or expenses incurred or sustained by any persons resulting from any interpretation made by any of our officers, agents or employees. These interpretations are also subject to our general terms and conditions set out in our current Price Schedule.

Comments

Annular volume calculated for 4-1/2" casing
Patterson UTI Rig 103
Thank you for using Phoenix Surveys!!
API #: 05-123-27329-00
No Repeat Due To Hole Conditions

Database File:	7053.db
Dataset Pathname:	pass2
Presentation Format:	pdc
Dataset Creation:	Tue Mar 27 14:49:34 2007 by Log Open-Cased 061129
Charted by:	Depth in Feet scaled 1:240

6	Caliper (in)	16	2	Deep Resistivity (Ohm-m)	200	20	Density Porosity (pu)	0
0	Gamma Ray (GAPI)	200	2	Medium Resistivity (Ohm-m)	200	20	Neutron Porosity (pu)	0
0	SP (mV)	200	2	Shallow Resistivity (Ohm-m)	200			



6	Caliper (in)	16	2	Deep Resistivity (Ohm-m)	200	20	Density Porosity (pu)	0
0	Gamma Ray (GAPI)	200	2	Medium Resistivity (Ohm-m)	200	20	Neutron Porosity (pu)	0
0	SP (mV)	200	2	Shallow Resistivity (Ohm-m)	200			