

EOG RESOURCES, INC.
FISCUS MESA #15-17H
LOCATED IN WELD COUNTY, COLORADO
SECTION 17, T9N, R58W, 6th P.M.

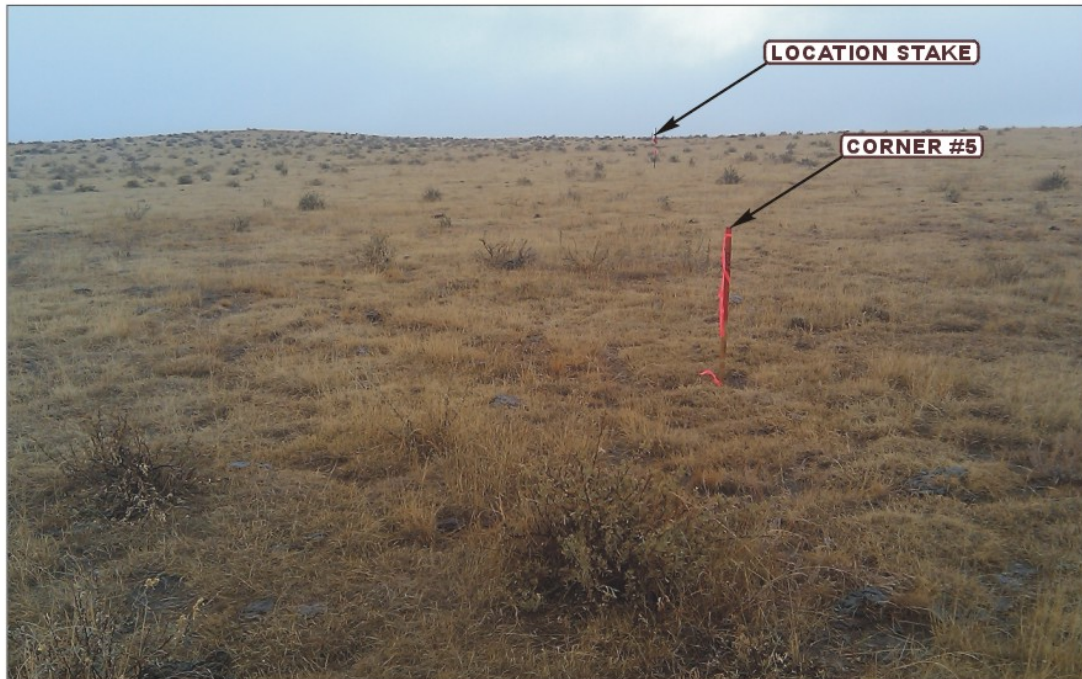


PHOTO: VIEW FROM CORNER #5 TO LOCATION STAKE

CAMERA ANGLE: NORTHEASTERLY



PHOTO: VIEW FROM BEGINNING OF PROPOSED
ACCESS FOR THE #19-21H

CAMERA ANGLE: NORTHERLY



- Since 1964 -



Uintah Engineering & Land Surveying
85 South 200 East Vernal, Utah 84078
(435) 789-1017 * FAX (435) 789-1813

LOCATION PHOTOS

11 **09** **10**
MONTH DAY YEAR

TAKEN BY: R.P.

DRAWN BY: Z.L.

REVISED: 00-00-00

PHOTO
P1

EOG RESOURCES, INC.
FISCUS MESA #15-17H
LOCATED IN WELD COUNTY, COLORADO
SECTION 17, T9N, R58W, 6th P.M.



PHOTO: VIEW OF LOCATION STAKE

CAMERA ANGLE: NORTHERLY



PHOTO: VIEW OF LOCATION STAKE

CAMERA ANGLE: EASTERLY



- Since 1964 -



Uintah Engineering & Land Surveying
85 South 200 East Vernal, Utah 84078
(435) 789-1017 * FAX (435) 789-1813

LOCATION PHOTOS

11 09 10
MONTH DAY YEAR

TAKEN BY: R.P.

DRAWN BY: Z.L.

REVISED: 00-00-00

PHOTO
P2

EOG RESOURCES, INC.
FISCUS MESA #15-17H
LOCATED IN WELD COUNTY, COLORADO
SECTION 17, T9N, R58W, 6th P.M.



PHOTO: VIEW OF LOCATION STAKE

CAMERA ANGLE: SOUTHERLY



PHOTO: VIEW OF LOCATION STAKE

CAMERA ANGLE: WESTERLY



Uintah Engineering & Land Surveying
85 South 200 East Vernal, Utah 84078
(435) 789-1017 * FAX (435) 789-1813

LOCATION PHOTOS

11 **09** **10**
MONTH DAY YEAR

TAKEN BY: R.P.

DRAWN BY: Z.L.

REVISED: 00-00-00

PHOTO
P3