

EOG RESOURCES, INC.

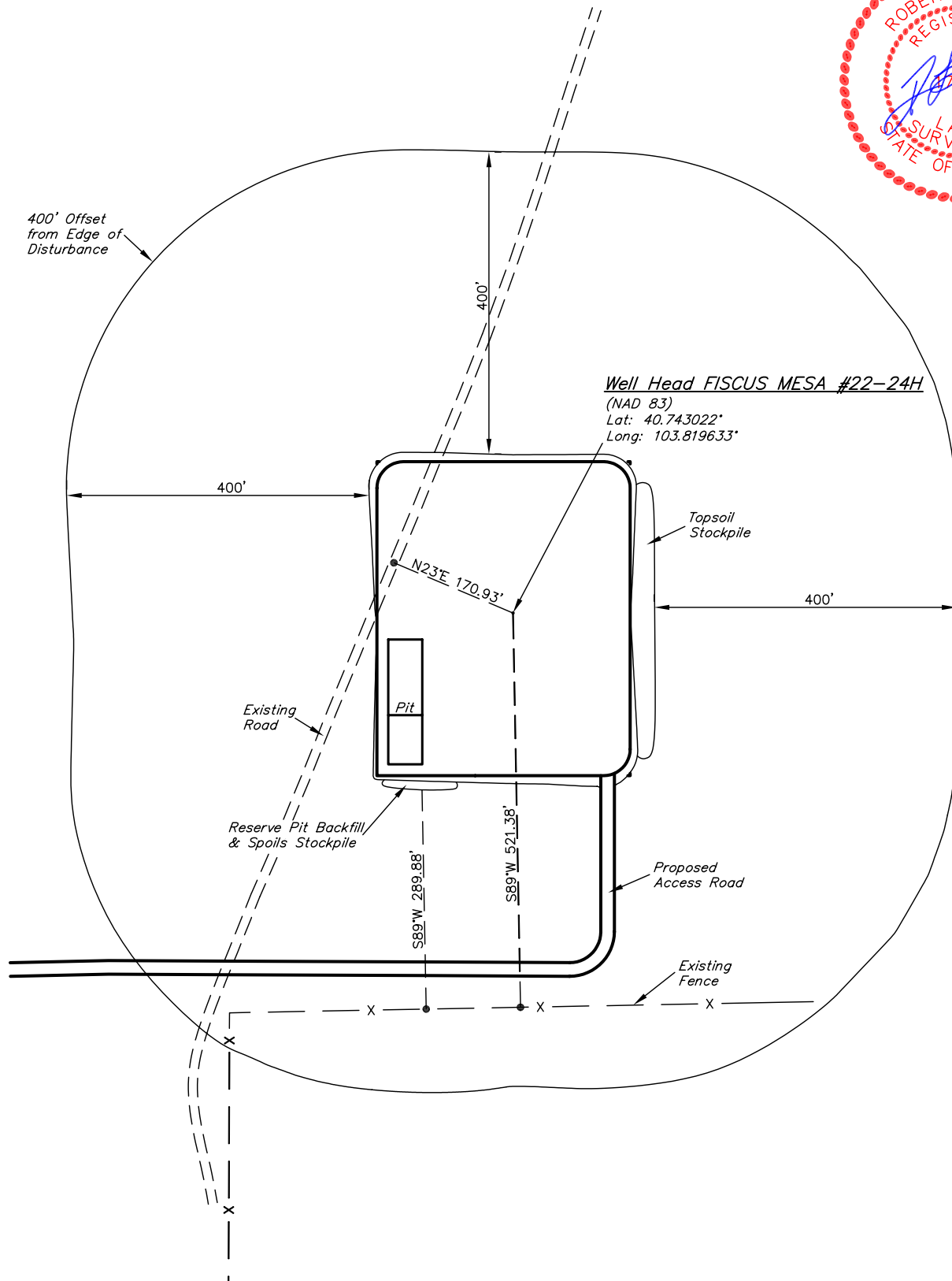
ADDENDUM TO LEGAL PLAT FOR

FISCUS MESA #22-24H
SECTION 24, T9N, R58W, 6th. P.M.
501' FNL 501' FWL

SCALE: 1" = 200'

DATE: 11-16-10

DRAWN BY: J.I.



UINTAH ENGINEERING & LAND SURVEYING

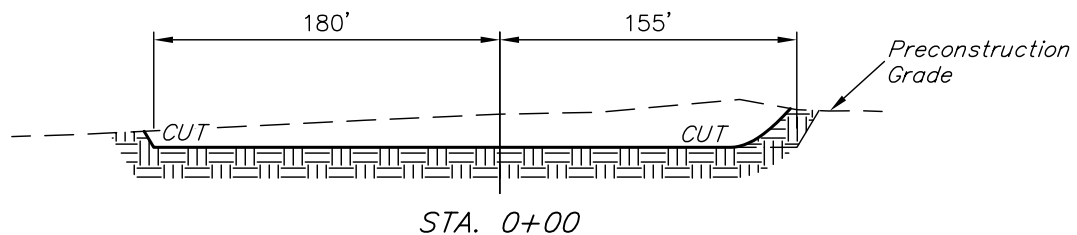
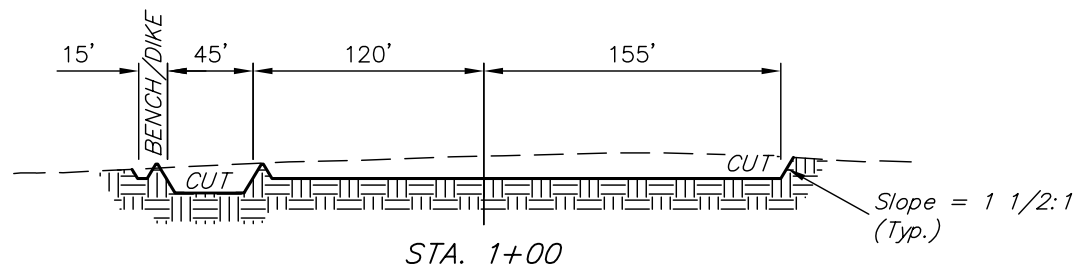
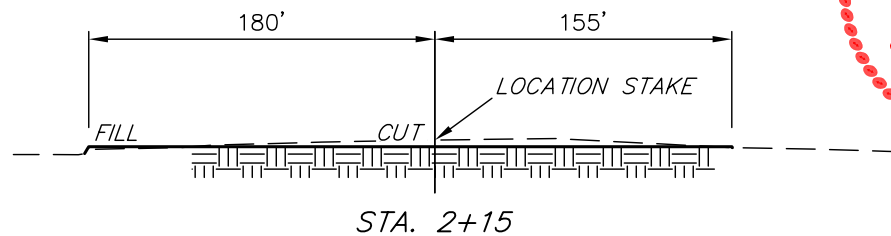
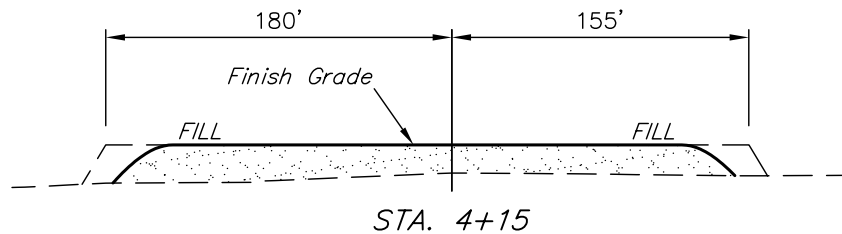
85 So. 200 East * Vernal, Utah 84078 * (435) 789-1017

UINTAH ENGINEERING & LAND SURVEYING
85 So. 200 East * Vernal, Utah 84078 * (435) 789-1017

1" = 40'
 X-Section
 Scale
 1" = 100'
 DATE: 11-16-10
 DRAWN BY: J.I.

EOG RESOURCES, INC.
 CONSTRUCTION LAYOUT CROSS SECTIONS FOR
 FISCUS MESA #22-24H
 SECTION 24, T9N, R58W, 6th. P.M.
 501' FNL 501' FWL

FIGURE #2



NOTE:

Topsoil should not be
 Stripped Below Finished
 Grade on Substructure Area.

APPROXIMATE ACREAGES
 WELL SITE DISTURBANCE = ± 4.174 ACRES
 ACCESS ROAD DISTURBANCE = ± 0.706 ACRES
 TOTAL = ± 4.880 ACRES

* NOTE:
 FILL QUANTITY INCLUDES
 5% FOR COMPACTION

APPROXIMATE YARDAGES

(6") Topsoil Stripping = 2,830 Cu. Yds.
 Remaining Location = 10,130 Cu. Yds.
 TOTAL CUT = 12,960 CU.YDS.
 FILL = 9,780 CU.YDS.

EXCESS MATERIAL = 3,180 Cu. Yds.
 Topsoil & Pit Backfill = 3,180 Cu. Yds.
 (1/2 Pit Vol.)
 EXCESS UNBALANCE = 0 Cu. Yds.
 (After Interim Rehabilitation)

UTAH ENGINEERING & LAND SURVEYING
 85 So. 200 East * Vernal, Utah 84078 * (435) 789-1017

EOG RESOURCES, INC.

TYPICAL RIG LAYOUT FOR

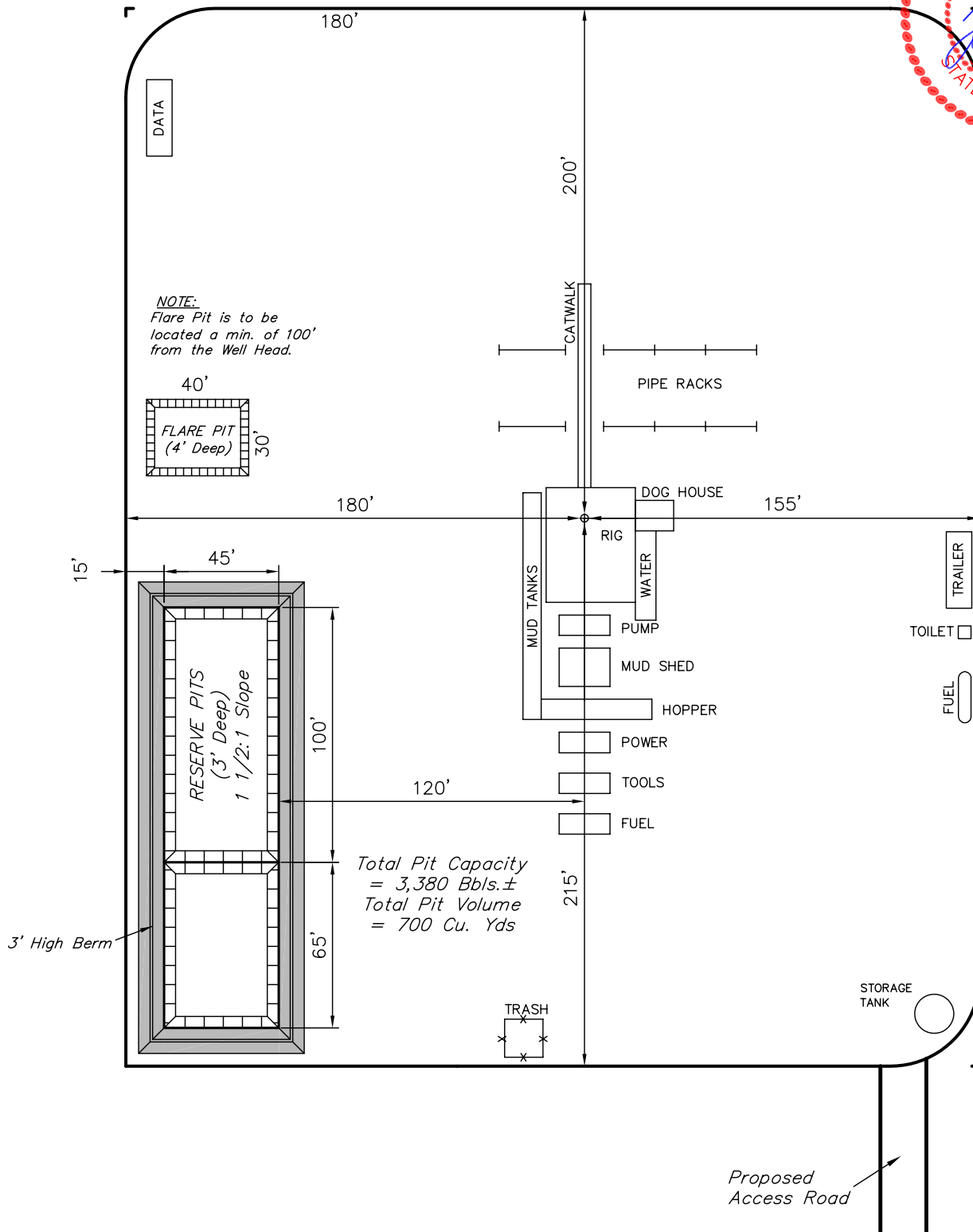
FISCUS MESA #22-24H
SECTION 24, T9N, R58W, 6th. P.M.
501' FNL 501' FWL

FIGURE #3

SCALE: 1" = 60'

DATE: 11-16-10

DRAWN BY: J.I.



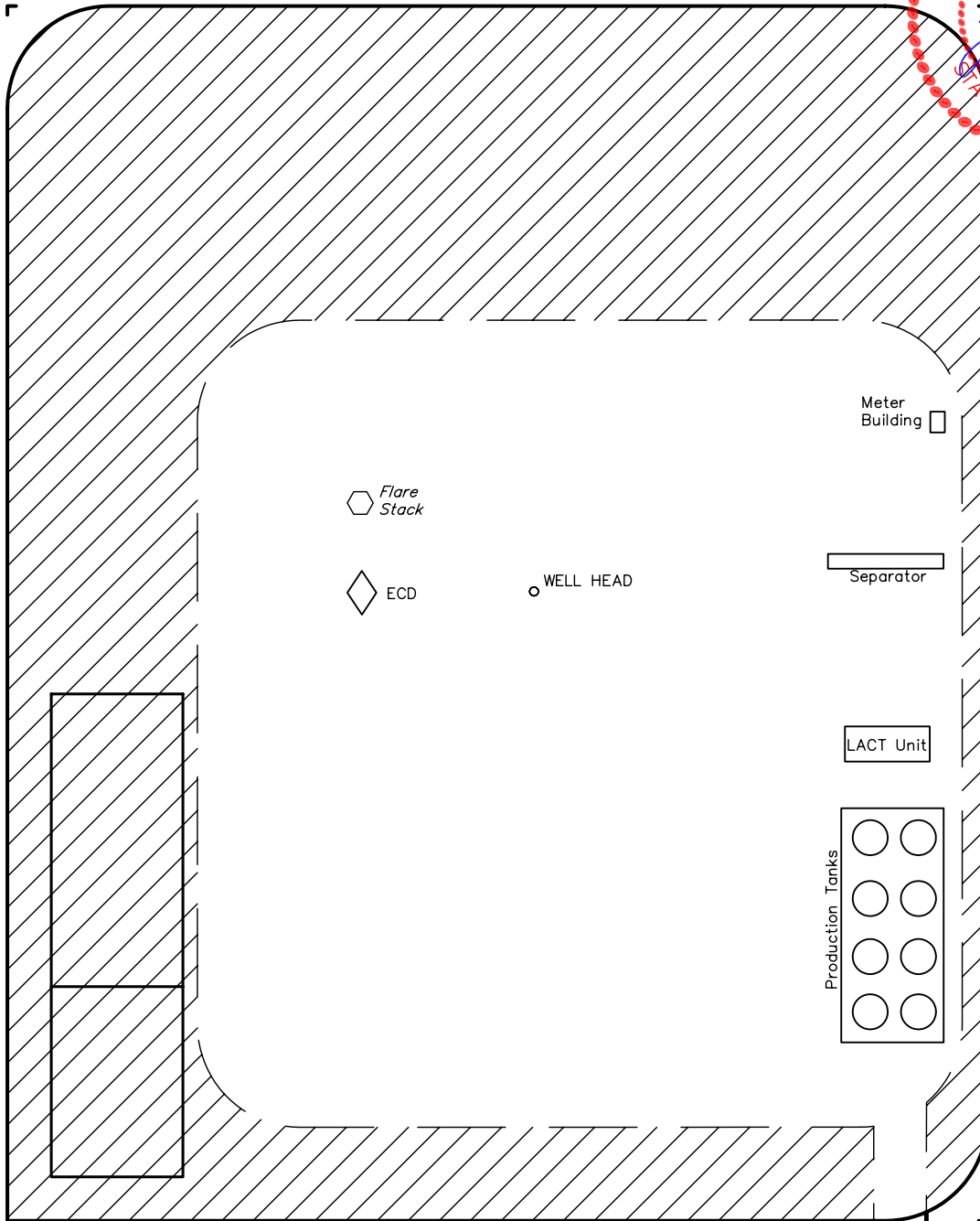
UINTAH ENGINEERING & LAND SURVEYING

85 So. 200 East * Vernal, Utah 84078 * (435) 789-1017

EOG RESOURCES, INC.
RECLAMATION DIAGRAM FOR
FISCUS MESA #22-24H
SECTION 24, T9N, R58W, 6th. P.M.
501' FNL 501' FWL

FIGURE #4

SCALE: 1" = 60'
DATE: 11-16-10
DRAWN BY: J.I.



APPROXIMATE ACREAGES
UN-RECLAIMED = ± 1.645 ACRES

 RECLAIMED AREA

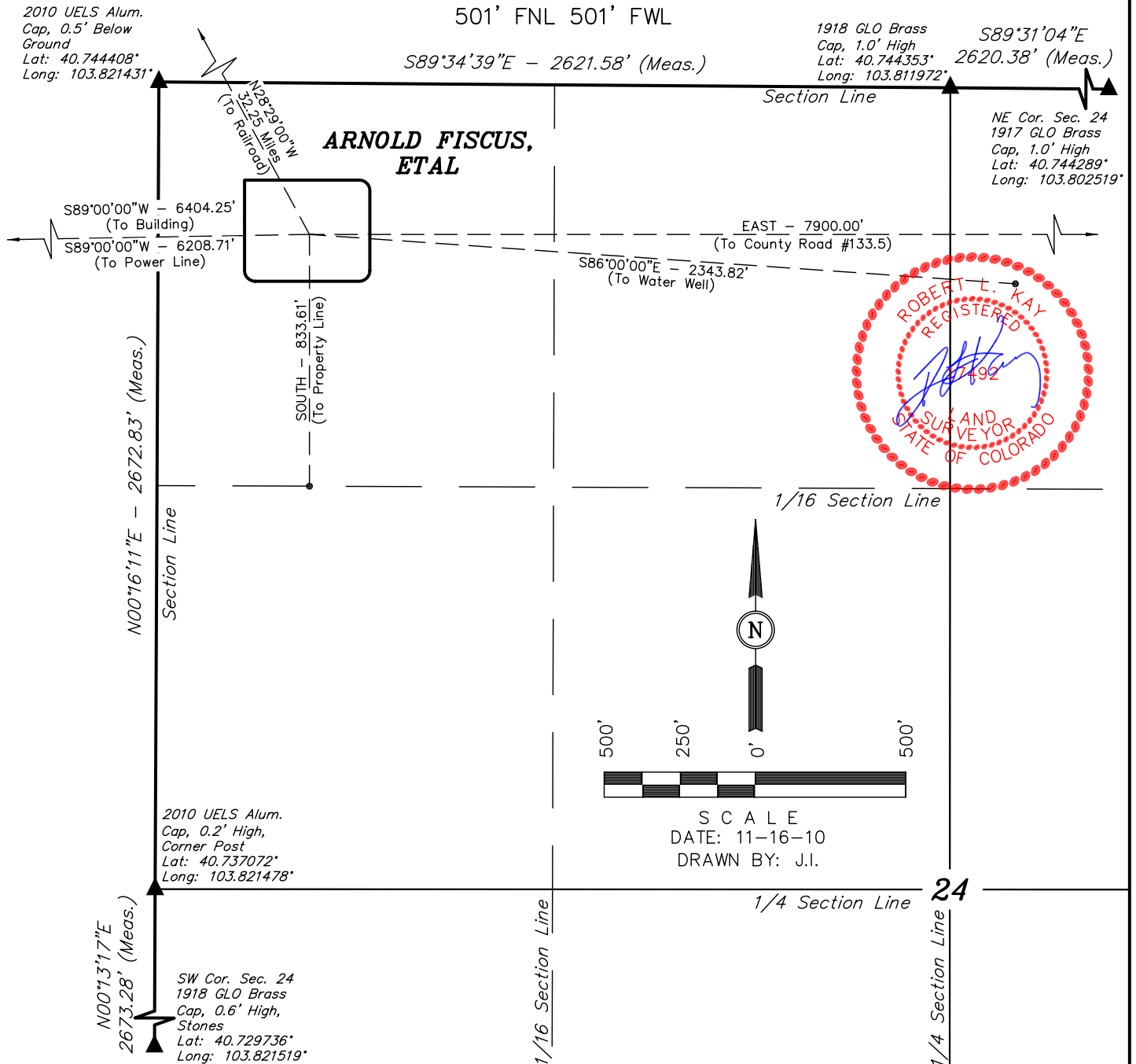
UINTAH ENGINEERING & LAND SURVEYING
85 So. 200 East * Vernal, Utah 84078 * (435) 789-1017

EOG RESOURCES, INC.

LOCATION DRAWING FOR

FISCUS MESA #22-24H
SECTION 24, T9N, R58W, 6th. P.M.
501' FNL 501' FWL

FIGURE #5



PLANT COMMUNITY

- ☐ DISTURBED GRASSLAND
- ☐ NATIVE GRASSLAND
- ☐ SHRUB LAND
- ☐ PLAINS RIPARIAN
- ☐ MOUNTAIN RIPARIAN
- ☐ FOREST LAND
- ☐ WETLANDS AQUATIC
- ☐ ALPINE
- ☐ OTHER (Describe): _____

CURRENT LAND USE

- CROP LAND: ☐ IRRIGATED ☐ DRY LAND ☐ IMPROVED PASTURE ☐ HAY MEADOW ☐ CRP
- NON-CROP LAND: ☐ RANGELAND ☐ TIMBER ☐ RECREATIONAL ☐ OTHER (Describe) _____
- SUBDIVIDED: ☐ INDUSTRIAL ☐ COMMERCIAL ☐ RESIDENTIAL _____

FUTURE LAND USE

- CROP LAND: ☐ IRRIGATED ☐ DRY LAND ☐ IMPROVED PASTURE ☐ HAY MEADOW ☐ CRP
- NON-CROP LAND: ☐ RANGELAND ☐ TIMBER ☐ RECREATIONAL ☐ OTHER (Describe) _____
- SUBDIVIDED: ☐ INDUSTRIAL ☐ COMMERCIAL ☐ RESIDENTIAL _____