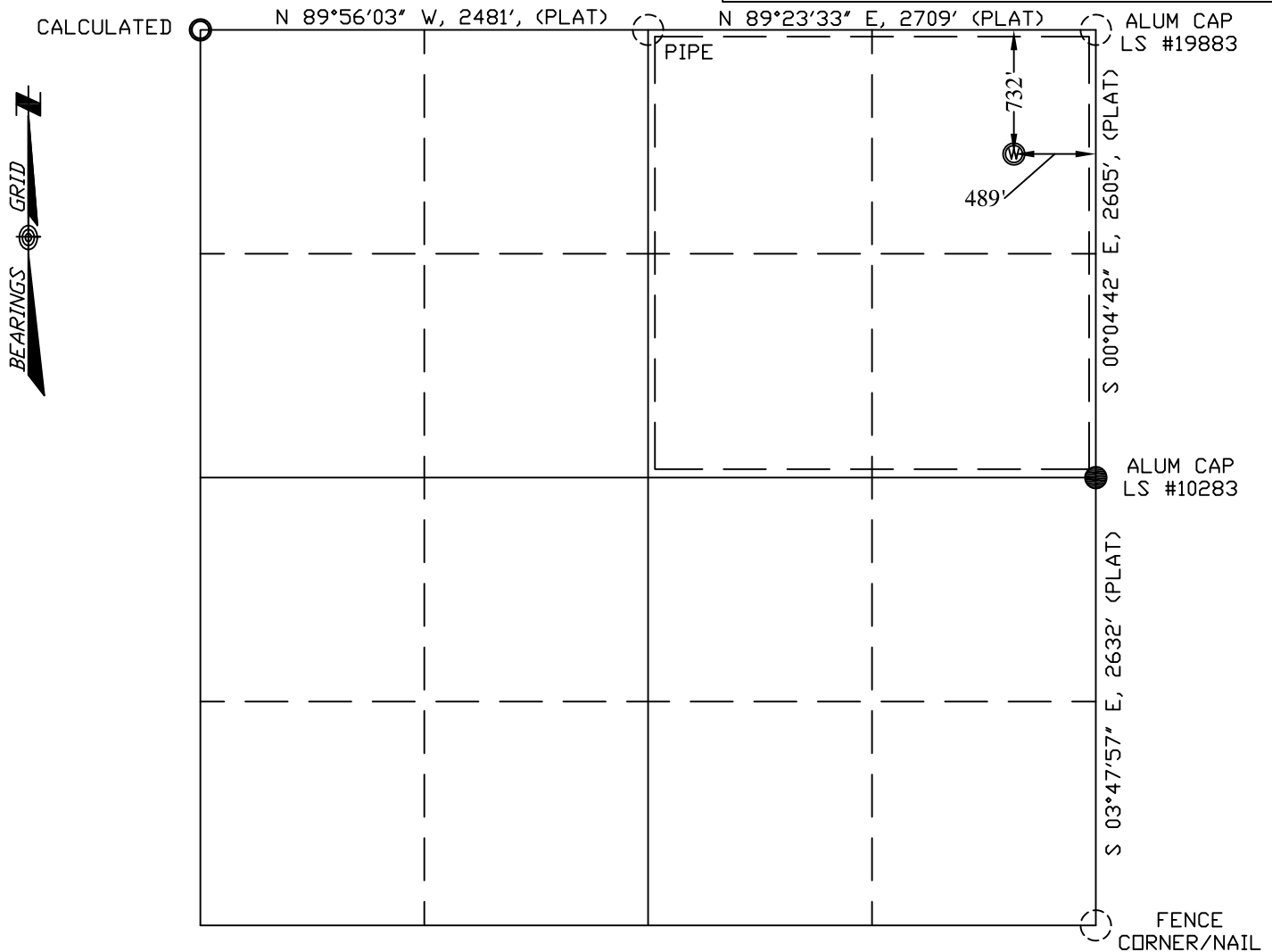


COLORADO WELL LOCATION

<i>OPERATOR:</i> Pioneer Natural Resources		<i>WELL NAME:</i> M. Gonzales 41-32 (Revised 4)	
<i>SECTION 32 TOWNSHIP 31 S, RANGE 66 W OF THE 6TH P.M., IN LAS ANIMAS COUNTY</i>			
<i>ACTUAL FOOTAGE OF WELL LOCATION:</i> 489 feet from the EAST line and 732 feet from the NORTH line.		<i>GROUND ELEV. (NGVD29):</i> 7211'	
<i>BASIS OF BEARING:</i> GPS Observations	<i>BASIS OF ELEVATION:</i> GPS Observations	<i>PDOP:</i> 2.4	
<i>SURFACE USE:</i> Timber	<i>DATE STAKED:</i> September 10, 2007	<i>LAT:</i> N 37.30706°	<i>LONG:</i> W 104.79706° (NAD27)
		<i>LAT:</i> N 37.30708°	<i>LONG:</i> W 104.79763° (NAD83)



Field Operator: R. Coberly

NOTICE:

SOME INFORMATION SHOWN HEREON IS BASED ON INFORMATION TAKEN FROM RECORD INFORMATION, PREVIOUS SURVEYS, PLATS AND SURVEYS BY OTHER SURVEYORS, OR COLLATORAL EVIDENCE AND MAY NOT REFLECT THAT WHICH MAY BE DISCLOSED BY A COMPLETE BOUNDARY SURVEY. **THIS SKETCH IS NOT TO BE RELIED UPON FOR THE ESTABLISHMENT OF SURFACE BOUNDARIES, FENCES, BUILDINGS OR OTHER FUTURE IMPROVEMENTS.**

I hereby certify that this proposed well location shown was plotted from field notes of a actual GIS survey and meets the requirements of Colorado Statue 38-51-109.3 and was made by me or under my supervision, and that the same is true and correct to the best of my knowledge and belief and **IS NOT A LAND SURVEY PLAT.**

Lee Shields
Lee Shields, CO PLS #37960

September 10, 2007 (REVISED
Date Platted SHEET)

LEGEND:

- ⊙ = WELL LOCATION
- = SURVEY MARKER (SEE DRAWING)
- = CALCULATED POINT
- = LOCATION FURNISHED BY PNRC.

NOTE:

ALL WELL LOCATIONS AND ELEVATIONS DERIVED FROM OBSERVED GPS DATA AND DIFFERENTIALY CORRECTED TO CORS STATION PUEBLO 1 (PID #AJ6946) AND MEET AND/OR EXCEED COGCC RULE 303c AND RULE 215a-h.

NO VISIBLE IMPROVEMENTS WITHIN 200 FEET OF PROPOSED WELLHEAD UNLESS NOTED OTHERWISE.

DISTANCES ARE MEASURED AT 90° (NINTY DEGREES) FROM SAID SECTION LINES TO THE WELL LOCATION.

DESIRED PDOP MAY NOT BE OBTAINED DUE TO NATIVE CONDITIONS OF SITE.

SHIELDS SURVEY L^{td}. C^o. Raton, New Mexico 87740
(505)445-1232