

1625 Broadway  
Suite 2000  
Denver, CO 80202

Tel: 303.228.4000  
Fax: 303.228.4280

www.nobleenergyinc.com



February 3, 2011

Colorado Oil and Gas Conservation Commission  
The Chancery Building  
1120 Lincoln Street, Suite 801  
Denver, CO 80203

Attn: Mr. David Neslin, Director

RE: HBR PC G11-21D  
Codell/Niobrara New Drill  
Township 4 North, Range 65 West, 6th P.M.  
Section 11: SW/4NE/4: 1934' FNL & 1998' FEL (Surface Location)  
Section 11: SE/4NW/4: 2550' FNL & 2550' FWL (Bottom Hole Location)  
Weld County, Colorado

Mr. Neslin:

Noble Energy, Inc. ("NEI") is planning to drill the captioned boundary well in accordance with the provisions of COGCC Rule 318A.e.

NEI's proposed wellbore spacing unit consists of the SENW, SWNE, NWSE, & NESW, T4N, R65W, creating a 160-acre wellbore spacing unit. NEI is the only owner within the proposed wellbore spacing unit, therefore NEI hereby attests that no notice letters are required under COGCC Rule 318A.e.(6).

Enclosed are copies of the following documents to assist you in your review and approval of NEI's proposed APD for the captioned well:

- Plat illustrating the proposed wellbore spacing unit and number of Codell/Niobrara wells located within the existing 160-acre governmental quarter section (NW/4) to be less than eight (8) in accordance with COGCC Rule 318A.f.
- Plat illustrating proposed wellbore spacing unit on existing location plat.

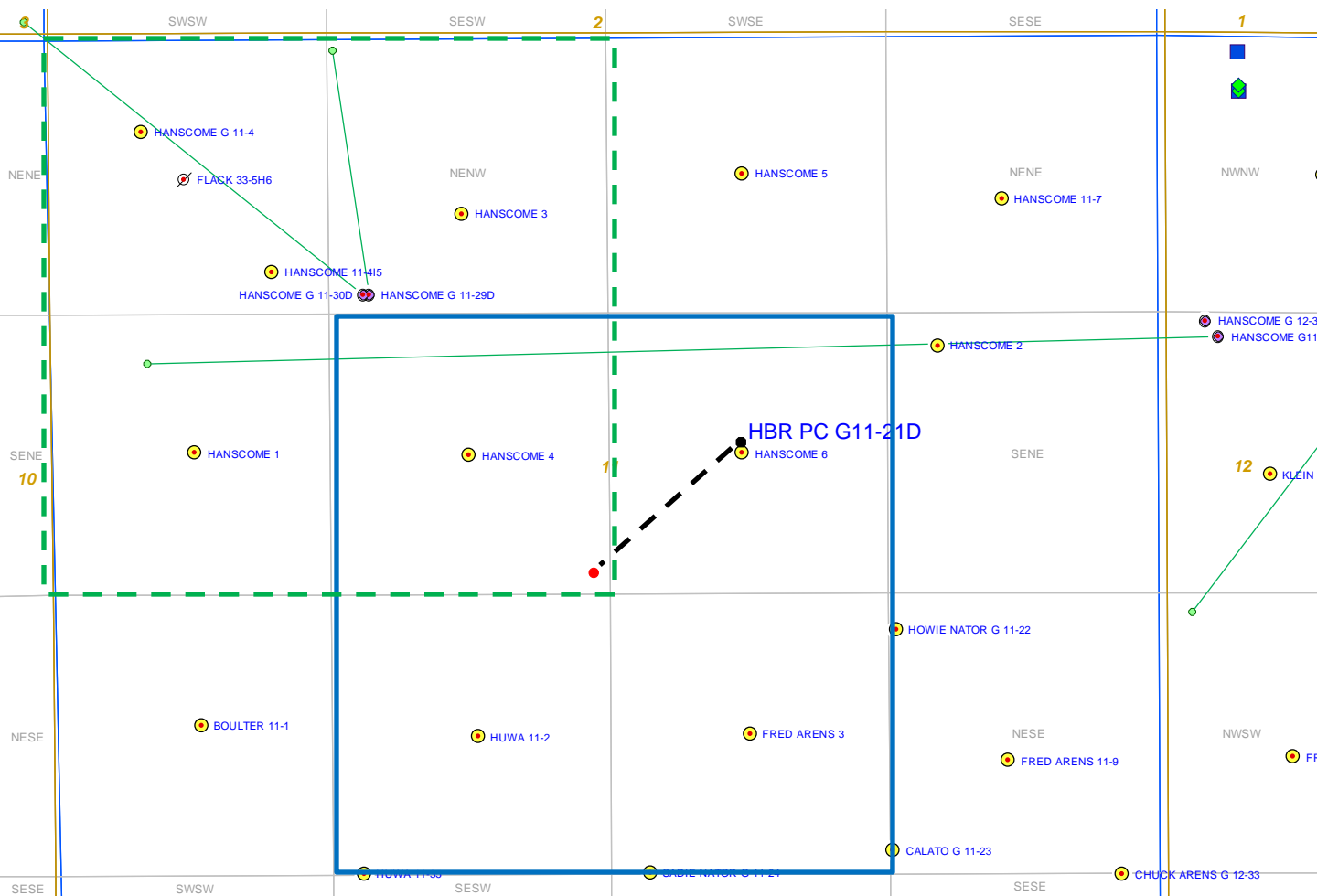
Thank you for your attention to the enclosed. NEI respectfully requests that the COGCC review the enclosed information and approve the Application for Permit to Drill the captioned well.

Sincerely,

February 3, 2011

Justin Garrett  
Regulatory Specialist  
Noble Energy Inc.

HBR PC G11-21D  
Proposed Spacing Unit – Noble Energy, Inc  
SE/4NW/4, SW/4NE/4, NW/4SE/4, NE/4SW/4  
Section 11, Township 4 North, Range 65 West



Legend



Proposed 160 acre spacing unit



Bottom Hole Location



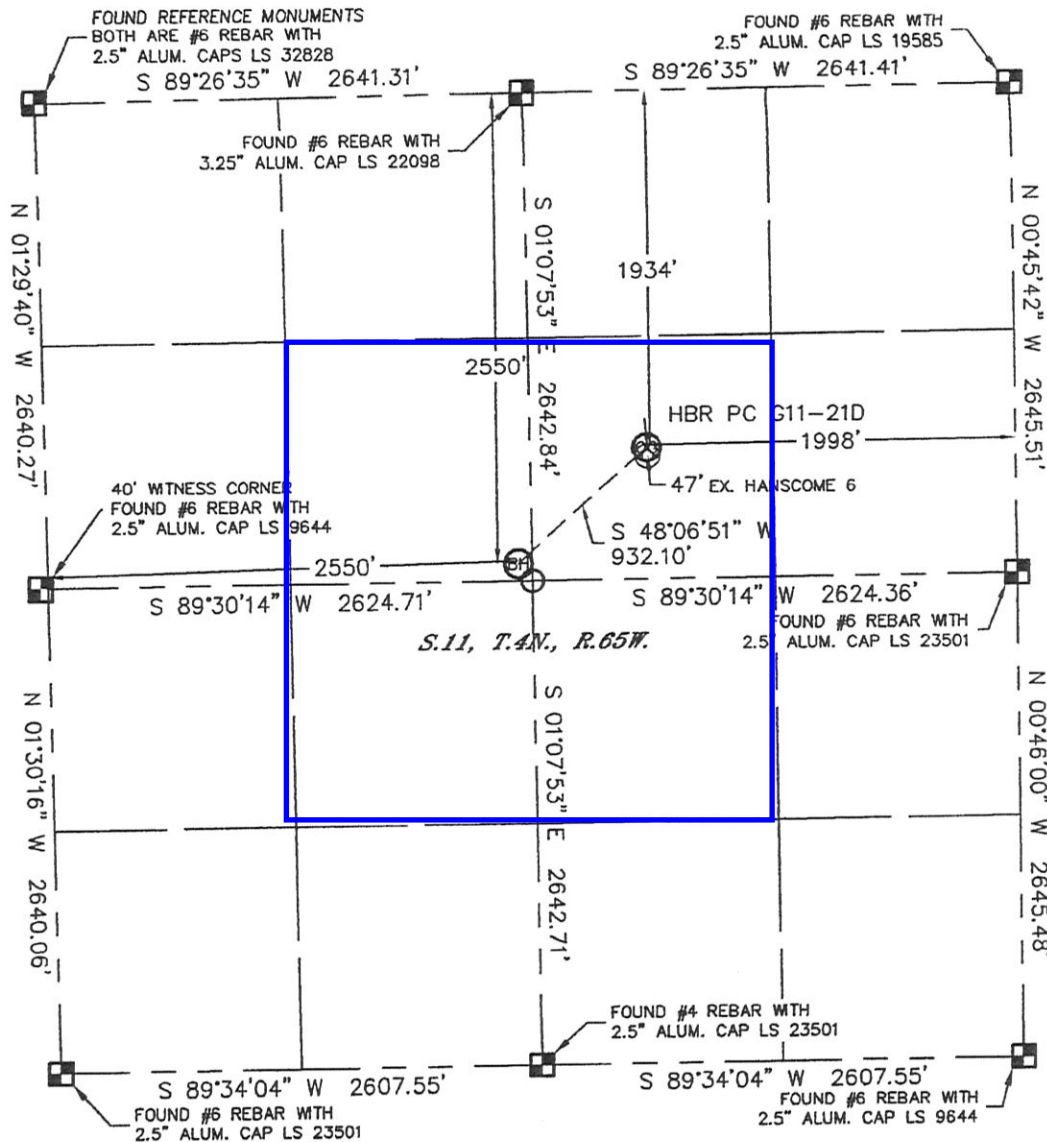
Bottom Hole Located SE/4NW/4, Sec. 11, T4N, R65W

The governmental  $\frac{1}{4}$  Section has less than 8 bottom hole wells producing from the Codell, Niobrara, and J-Sand formations.

# WELL LOCATION CERTIFICATE

THIS MAP DOES NOT REPRESENT A BOUNDARY SURVEY

SECTION: 11  
TOWNSHIP: 4N  
RANGE: 65W



In accordance with a request from Beau Fritz with Noble Energy Inc., Lat40°, LLC has determined the surface location of the HBR PC G11-21D to be 1934' from the NORTH line and 1998' from the EAST line and the bottom hole to be 2550' from the NORTH line and 2550' from the WEST line as measured at right angles from the section lines of Section 11, Township 4 North, Range 65 West of the Sixth Principal Meridian, County of Weld, State of Colorado.

I hereby state that this Well Location Certificate was prepared by me, or under my direct supervision, that the fieldwork was completed on 12/14/10, for and on behalf of Noble Energy Inc. That this is not a Land Survey Plat or an Improvement Survey Plat, and that it is not to be relied upon for establishment of fence, building, or other future improvement lines.

## NOTE:

- 1) Bearings shown are Grid Bearings of the Colorado State Plane Coordinate System, North Zone, North American Datum 1983/2007. The lineal dimensions as contained herein are based upon the "U.S. Survey Foot."
- 2) Ground elevations are based on an observed GPS elevation (NAVD 1988 DATUM).
- 3) NEAREST EXISTING WELL: HANSCOME 6 47'
- 4) IMPROVEMENTS: See LOCATION DRAWING for all visible improvements within 400' of disturbed area.
- 5) SURFACE USE: IRRIGATED CROP
- 6) INSTRUMENT OPERATOR: BRIAN BRINKMAN

SURFACE LOCATION  
LATITUDE: 40.32894°N  
LONGITUDE: 104.62809°W  
PDOP: 2.4  
ELEV: 4691  
1/4, 1/4: SW1/4NE1/4  
NEAREST PROPERTY LINE: 709' SOUTH

BOTTOM HOLE  
LATITUDE: 40.32725°N  
LONGITUDE: 104.63060°W

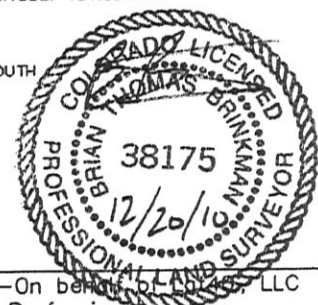
## NOTE

According to Colorado law, you must commence any legal action based upon any defect in this W.L.C. within three years after you discover such defect. In no event, may any action based upon any defect in this survey be commenced more than ten years after the date of the certificate shown hereon. (13-80-105 C.R.S.)

## LEGEND

- = ALIQUOT MONUMENT AS DESCRIBED
- = CALCULATED POSITION

Brian T. Brinkman—On behalf of Lat40°, LLC  
Colorado Licensed Professional  
Land Surveyor No. 38175 PROJECT#: 2010172



Lat40°, LLC

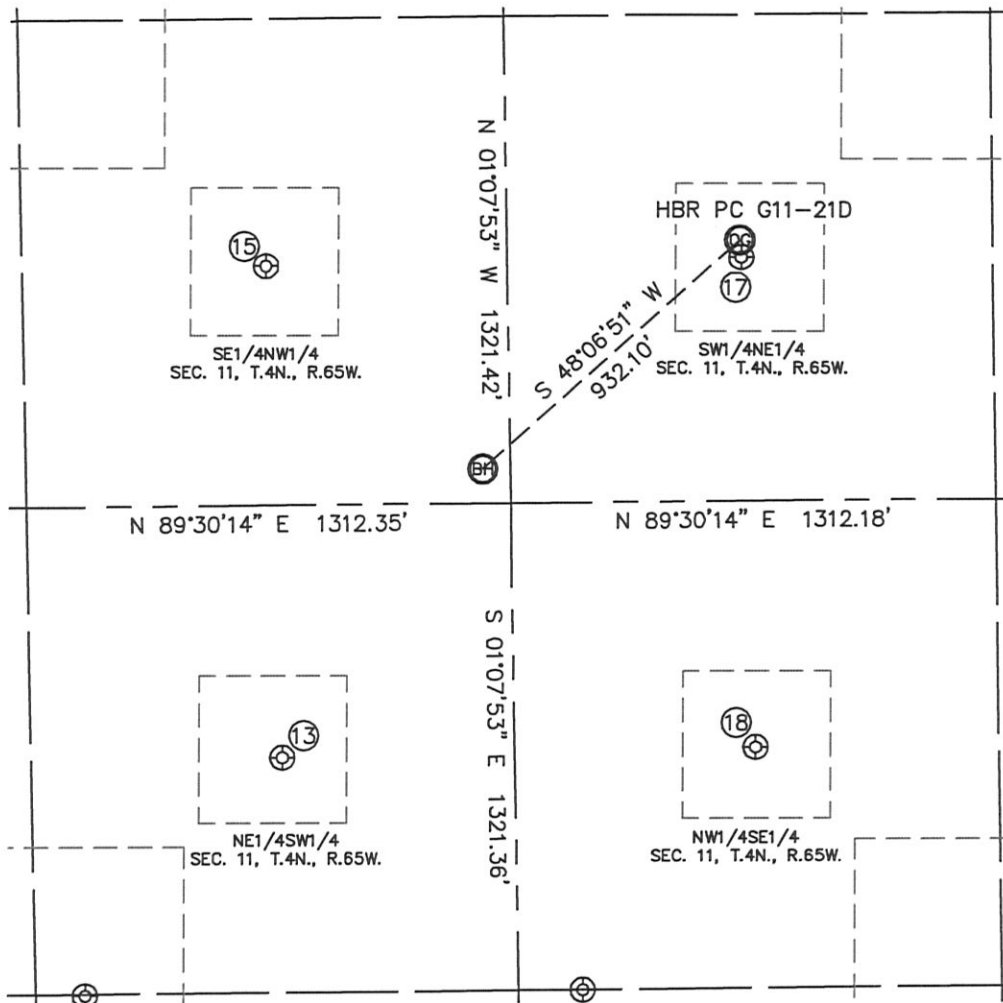
1635 Foxtrail Drive, Suite 325

Loveland, CO 80538

# SITE SKETCH

HBR PC G11-21D

SECTION: 11  
TOWNSHIP: 4N  
RANGE: 65W



⑬

HUWA 11-2  
NE1/4SW1/4  
1959' FSL  
1989' FWL  
LAT-40.32513°N  
LONG-104.63256°W  
PDOP: 1.8  
ELEV: 4685

⑮

HANSCOME 4  
SE1/4NW1/4  
1993' FNL  
1974' FWL  
LAT-40.32878°N  
LONG-104.63270°W  
PDOP: 2.1  
ELEV: 4678

⑰

HANSCOME 6  
SW1/4NE1/4  
1981' FNL  
1995' FEL  
LAT-40.32881°N  
LONG-104.62808°W  
PDOP: 1.7  
ELEV: 4691

⑱

FRED ARENS 11-3  
NW1/4SE1/4  
1976' FSL  
1968' FEL  
LAT-40.32517°N  
LONG-104.62797°W  
PDOP: 1.7  
ELEV: 4694

