



**Bill Barrett Corporation**

## **Bill Barrett Corp.**

Garfield County, Colorado

MDP 15 Pad

GGU Federal 42A-29-691

Wellbore #1

Survey: Surveys

## **Standard Survey Report**

29 October, 2010

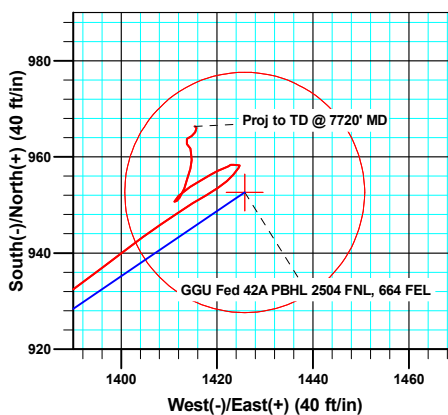
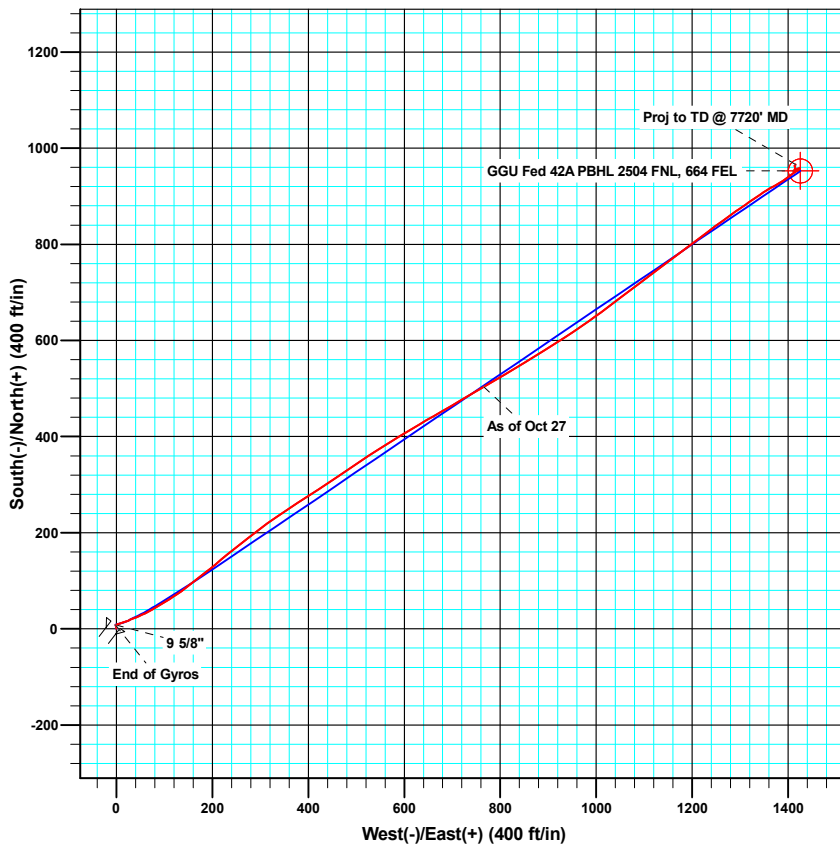
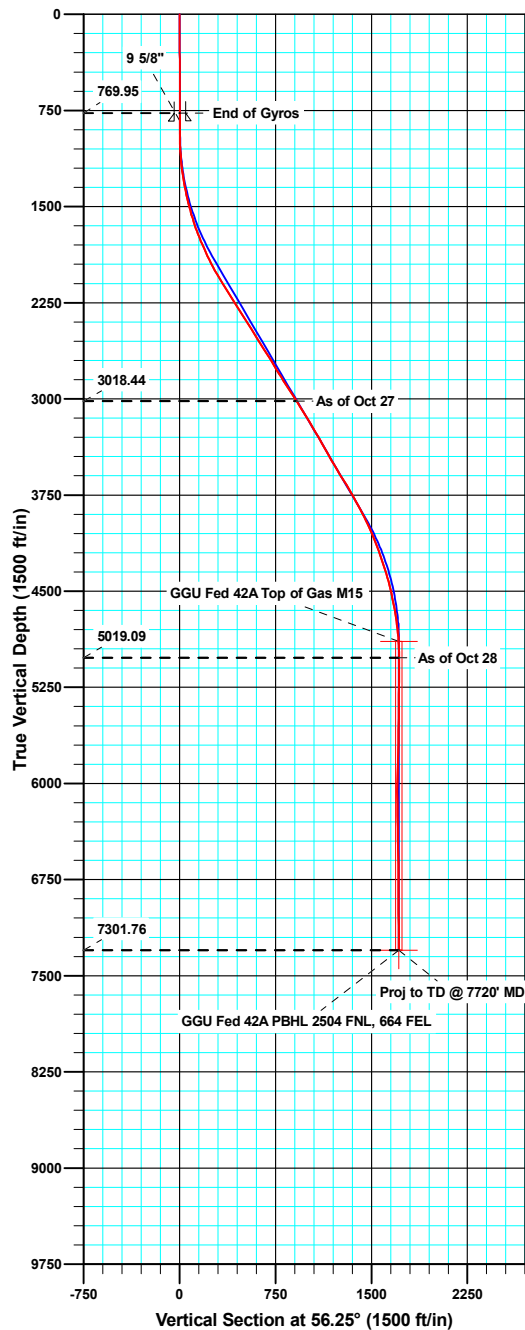




WELL DETAILS: GGU Federal 42A-29-691

Ground Level: 6030.20

North American Datum 1983		US State Plane 1983		Colorado Central Zone	
+N/-S	+E/-W	Northing	Easting	Latitude	Longitude
0.00	0.00	1612487.90	2414244.60	39° 29' 48.06 N	107° 34' 33.14 W



Azimuths to True North  
Magnetic North: 10.23°

Magnetic Field  
Strength: 52411.5nT  
Dip Angle: 65.85°  
Date: 09/10/2010  
Model: IGRF200510

#### ANNOTATIONS

TVD	MD	Inc	Azi	+N/-S	+E/-W	Vsect	Departure	Annotation
3018.44	3250.00	32.50	59.80	503.80	765.72	916.56	916.87	As of Oct 27
5019.09	5437.00	0.30	278.00	958.24	1424.74	1717.00	1718.89	As of Oct 28
7301.76	7720.00	0.40	290.50	966.37	1415.33	1713.69	1754.83	Proj to TD @ 7720' MD

<b>Company:</b>	Bill Barrett Corp.	<b>Local Co-ordinate Reference:</b>	Well GGU Federal 42A-29-691
<b>Project:</b>	Garfield County, Colorado	<b>TVD Reference:</b>	KB @ 6053.20ft
<b>Site:</b>	MDP 15 Pad	<b>MD Reference:</b>	KB @ 6053.20ft
<b>Well:</b>	GGU Federal 42A-29-691	<b>North Reference:</b>	True
<b>Wellbore:</b>	Wellbore #1	<b>Survey Calculation Method:</b>	Minimum Curvature
<b>Design:</b>	Wellbore #1	<b>Database:</b>	Compass VM

<b>Project</b>	Garfield County, Colorado		
<b>Map System:</b>	US State Plane 1983	<b>System Datum:</b>	Mean Sea Level
<b>Geo Datum:</b>	North American Datum 1983		
<b>Map Zone:</b>	Colorado Central Zone		

Site		MDP 15 Pad			
Site Position:		Northing:	1,612,474.12 usft	Latitude:	39° 29' 47.92 N
From:	Lat/Long	Easting:	2,414,257.84 usft	Longitude:	107° 34' 32.97 W
Position Uncertainty:	0.00 ft	Slot Radius:	1.10 ft	Grid Convergence:	-1.31 °

Well		GGU Federal 42A-29-691				
Well Position	+N/-S	0.00 ft	Northing:	1,612,487.89 usft	Latitude:	39° 29' 48.06 N
	+E/-W	0.00 ft	Easting:	2,414,244.60 usft	Longitude:	107° 34' 33.14 W
Position Uncertainty		0.00 ft	Wellhead Elevation:	ft	Ground Level:	6,030.20 ft

<b>Wellbore</b>	Wellbore #1				
<b>Magnetics</b>	<b>Model Name</b>	<b>Sample Date</b>	<b>Declination (°)</b>	<b>Dip Angle (°)</b>	<b>Field Strength (nT)</b>
	IGRF200510	09/10/10	10.24	65.85	52,411

<b>Design</b>	Wellbore #1				
<b>Audit Notes:</b>					
<b>Version:</b>	1.0	<b>Phase:</b>	ACTUAL	<b>Tie On Depth:</b>	0.00
<b>Vertical Section:</b>	<b>Depth From (TVD) (ft)</b>	<b>+N/-S (ft)</b>	<b>+E/-W (ft)</b>	<b>Direction (°)</b>	
	0.00	0.00	0.00	56.25	

<b>Survey Program</b>	<b>Date</b>	10/29/10			
<b>From (ft)</b>	<b>To (ft)</b>	<b>Survey (Wellbore)</b>	<b>Tool Name</b>	<b>Description</b>	
50.00	770.00	Gyro Surveys (Wellbore #1)	MWD	MWD - Standard	
968.00	7,720.00	Surveys (Wellbore #1)	MWD	MWD - Standard	

<b>Survey</b>										
<b>Measured Depth (ft)</b>	<b>Inclination (°)</b>	<b>Azimuth (°)</b>	<b>Vertical Depth (ft)</b>	<b>+N/-S (ft)</b>	<b>+E/-W (ft)</b>	<b>Vertical Section (ft)</b>	<b>Dogleg Rate (°/100ft)</b>	<b>Build Rate (°/100ft)</b>	<b>Turn Rate (°/100ft)</b>	
770.00	0.44	33.07	769.95	8.13	-1.74	3.07	0.00	0.00	0.00	
833.00	0.28	37.92	832.95	8.45	-1.52	3.44	0.26	-0.25	7.69	
<b>9 5/8"</b>										
968.00	0.10	165.10	967.95	8.60	-1.28	3.71	0.26	-0.13	94.21	
1,063.00	3.20	71.30	1,062.90	9.37	1.25	6.25	3.38	3.26	-98.74	
1,158.00	6.40	73.40	1,157.55	11.73	8.84	13.87	3.37	3.37	2.21	
1,253.00	8.30	70.30	1,251.77	15.56	20.37	25.58	2.04	2.00	-3.26	
1,348.00	10.80	67.50	1,345.45	21.28	35.05	40.96	2.68	2.63	-2.95	
1,443.00	13.40	66.50	1,438.33	29.07	53.37	60.53	2.75	2.74	-1.05	
1,538.00	15.60	58.80	1,530.30	40.08	74.40	84.13	3.07	2.32	-8.11	

<b>Company:</b>	Bill Barrett Corp.	<b>Local Co-ordinate Reference:</b>	Well GGU Federal 42A-29-691
<b>Project:</b>	Garfield County, Colorado	<b>TVD Reference:</b>	KB @ 6053.20ft
<b>Site:</b>	MDP 15 Pad	<b>MD Reference:</b>	KB @ 6053.20ft
<b>Well:</b>	GGU Federal 42A-29-691	<b>North Reference:</b>	True
<b>Wellbore:</b>	Wellbore #1	<b>Survey Calculation Method:</b>	Minimum Curvature
<b>Design:</b>	Wellbore #1	<b>Database:</b>	Compass VM

Survey									
Measured Depth (ft)	Inclination (°)	Azimuth (°)	Vertical Depth (ft)	+N/-S (ft)	+E/-W (ft)	Vertical Section (ft)	Dogleg Rate (°/100ft)	Build Rate (°/100ft)	Turn Rate (°/100ft)
1,633.00	18.20	59.70	1,621.19	54.19	98.14	111.70	2.75	2.74	0.95
1,729.00	21.30	56.10	1,711.54	71.48	125.56	144.11	3.47	3.23	-3.75
1,824.00	23.20	51.70	1,799.47	92.70	154.57	180.03	2.66	2.00	-4.63
1,919.00	25.60	51.60	1,885.98	117.05	185.35	219.14	2.53	2.53	-0.11
2,014.00	28.50	50.10	1,970.58	144.35	218.83	262.14	3.14	3.05	-1.58
2,109.00	30.60	51.50	2,053.22	173.94	255.14	308.78	2.33	2.21	1.47
2,204.00	31.90	53.10	2,134.43	204.07	294.14	357.94	1.62	1.37	1.68
2,299.00	33.10	55.80	2,214.56	233.72	335.67	408.95	1.98	1.26	2.84
2,394.00	32.60	56.80	2,294.37	262.31	378.54	460.48	0.78	-0.53	1.05
2,489.00	32.10	56.90	2,374.62	290.11	421.10	511.31	0.53	-0.53	0.11
2,584.00	32.00	56.00	2,455.14	317.97	463.11	561.72	0.51	-0.11	-0.95
2,679.00	31.50	55.80	2,535.93	346.00	504.51	611.71	0.54	-0.53	-0.21
2,774.00	32.60	57.80	2,616.45	373.59	546.69	662.11	1.61	1.16	2.11
2,869.00	31.70	58.60	2,696.88	400.23	589.65	712.63	1.05	-0.95	0.84
2,964.00	30.90	59.40	2,778.05	425.65	631.96	761.93	0.95	-0.84	0.84
3,059.00	33.50	60.70	2,858.44	450.90	675.82	812.43	2.83	2.74	1.37
3,155.00	33.20	58.80	2,938.63	477.48	721.41	865.11	1.13	-0.31	-1.98
3,250.00	32.50	59.80	3,018.44	503.80	765.72	916.56	0.93	-0.74	1.05
3,345.00	31.10	60.10	3,099.18	528.87	809.05	966.52	1.48	-1.47	0.32
3,440.00	31.10	58.50	3,180.52	553.92	851.24	1,015.52	0.87	0.00	-1.68
3,535.00	31.20	57.40	3,261.83	579.99	892.88	1,064.63	0.61	0.11	-1.16
3,630.00	29.30	57.90	3,343.89	605.61	933.31	1,112.48	2.02	-2.00	0.53
3,725.00	28.80	55.00	3,426.94	631.08	971.75	1,158.59	1.57	-0.53	-3.05
3,821.00	30.70	53.30	3,510.28	659.00	1,010.34	1,206.19	2.17	1.98	-1.77
3,916.00	31.80	53.10	3,591.50	688.52	1,049.81	1,255.40	1.16	1.16	-0.21
4,011.00	31.60	52.90	3,672.33	718.56	1,089.67	1,305.24	0.24	-0.21	-0.21
4,106.00	30.10	53.00	3,753.88	747.91	1,128.55	1,353.87	1.58	-1.58	0.11
4,201.00	28.50	52.80	3,836.73	775.95	1,165.63	1,400.29	1.69	-1.68	-0.21
4,296.00	26.10	53.70	3,921.14	802.03	1,200.53	1,443.79	2.56	-2.53	0.95
4,391.00	24.10	53.00	4,007.16	826.08	1,232.87	1,484.04	2.13	-2.11	-0.74
4,486.00	22.50	54.40	4,094.41	848.34	1,263.14	1,521.57	1.78	-1.68	1.47
4,581.00	21.00	54.70	4,182.65	868.75	1,291.81	1,556.76	1.58	-1.58	0.32
4,676.00	17.80	55.90	4,272.24	886.74	1,317.74	1,588.30	3.39	-3.37	1.26
4,772.00	16.80	54.90	4,363.90	902.94	1,341.24	1,616.85	1.09	-1.04	-1.04
4,867.00	14.30	60.20	4,455.42	916.67	1,362.66	1,642.28	3.02	-2.63	5.58
4,961.00	11.40	61.20	4,547.06	926.92	1,380.88	1,663.12	3.09	-3.09	1.06
5,057.00	10.50	51.90	4,641.31	936.88	1,396.08	1,681.30	2.06	-0.94	-9.69
5,152.00	8.00	55.30	4,735.07	945.99	1,408.32	1,696.54	2.69	-2.63	3.58
5,247.00	5.60	59.90	4,829.40	952.08	1,417.77	1,707.78	2.59	-2.53	4.84
5,342.00	3.00	40.10	4,924.13	956.31	1,423.38	1,714.80	3.11	-2.74	-20.84
5,437.00	0.30	278.00	5,019.09	958.24	1,424.74	1,717.00	3.34	-2.84	-128.53
5,532.00	0.40	271.90	5,114.08	958.29	1,424.16	1,716.54	0.11	0.11	-6.42
5,627.00	0.40	284.50	5,209.08	958.38	1,423.51	1,716.05	0.09	0.00	13.26

<b>Company:</b>	Bill Barrett Corp.	<b>Local Co-ordinate Reference:</b>	Well GGU Federal 42A-29-691
<b>Project:</b>	Garfield County, Colorado	<b>TVD Reference:</b>	KB @ 6053.20ft
<b>Site:</b>	MDP 15 Pad	<b>MD Reference:</b>	KB @ 6053.20ft
<b>Well:</b>	GGU Federal 42A-29-691	<b>North Reference:</b>	True
<b>Wellbore:</b>	Wellbore #1	<b>Survey Calculation Method:</b>	Minimum Curvature
<b>Design:</b>	Wellbore #1	<b>Database:</b>	Compass VM

Survey										
Measured Depth (ft)	Inclination (°)	Azimuth (°)	Vertical Depth (ft)	+N/-S (ft)	+E/-W (ft)	Vertical Section (ft)	Dogleg Rate (°/100ft)	Build Rate (°/100ft)	Turn Rate (°/100ft)	
5,722.00	0.40	252.30	5,304.08	958.37	1,422.87	1,715.51	0.23	0.00	-33.89	
5,817.00	0.40	231.80	5,399.08	958.06	1,422.29	1,714.86	0.15	0.00	-21.58	
5,912.00	0.80	252.40	5,494.07	957.65	1,421.40	1,713.90	0.47	0.42	21.68	
6,007.00	0.90	242.80	5,589.06	957.11	1,420.11	1,712.52	0.18	0.11	-10.11	
6,102.00	1.10	238.40	5,684.05	956.29	1,418.67	1,710.87	0.23	0.21	-4.63	
6,198.00	1.60	241.00	5,780.02	955.16	1,416.71	1,708.61	0.52	0.52	2.71	
6,293.00	1.70	237.30	5,874.98	953.76	1,414.36	1,705.88	0.15	0.11	-3.89	
6,387.00	2.00	227.90	5,968.93	951.90	1,411.97	1,702.86	0.45	0.32	-10.00	
6,482.00	0.50	103.70	6,063.91	950.69	1,411.15	1,701.50	2.44	-1.58	-130.74	
6,577.00	1.40	34.10	6,158.90	951.56	1,412.20	1,702.86	1.38	0.95	-73.26	
6,672.00	1.20	22.30	6,253.88	953.44	1,413.23	1,704.76	0.35	-0.21	-12.42	
6,767.00	1.30	11.30	6,348.86	955.42	1,413.82	1,706.34	0.27	0.11	-11.58	
6,863.00	1.40	20.70	6,444.83	957.58	1,414.44	1,708.07	0.25	0.10	9.79	
6,959.00	0.80	345.70	6,540.81	959.33	1,414.69	1,709.25	0.91	-0.63	-36.46	
7,054.00	1.00	7.70	6,635.80	960.79	1,414.64	1,710.02	0.42	0.21	23.16	
7,149.00	0.40	298.00	6,730.79	961.77	1,414.46	1,710.41	0.99	-0.63	-73.37	
7,244.00	1.10	329.10	6,825.79	962.71	1,413.70	1,710.30	0.83	0.74	32.74	
7,339.00	0.70	62.00	6,920.78	963.76	1,413.74	1,710.92	1.40	-0.42	97.79	
7,434.00	0.70	59.90	7,015.77	964.32	1,414.76	1,712.08	0.03	0.00	-2.21	
7,529.00	0.70	20.70	7,110.76	965.16	1,415.46	1,713.13	0.49	0.00	-41.26	
7,624.00	0.40	14.50	7,205.76	966.02	1,415.75	1,713.85	0.32	-0.32	-6.53	
7,675.00	0.40	290.50	7,256.76	966.26	1,415.63	1,713.88	1.05	0.00	-164.71	
7,720.00	0.40	290.50	7,301.76	966.37	1,415.33	1,713.69	0.00	0.00	0.00	

Casing Points					
Measured Depth (ft)	Vertical Depth (ft)	Name		Casing Diameter (ft)	Hole Diameter (ft)
833.00	832.95	9 5/8"		0.80	1.02

Survey Annotations					
Measured Depth (ft)	Vertical Depth (ft)	Local Coordinates		Comment	
		+N/-S (ft)	+E/-W (ft)		
3,250.00	3,018.44	503.80	765.72	As of Oct 27	
5,437.00	5,019.09	958.24	1,424.74	As of Oct 28	
7,720.00	7,301.76	966.37	1,415.33	Proj to TD @ 7720' MD	

Checked By: \_\_\_\_\_ Approved By: \_\_\_\_\_ Date: \_\_\_\_\_