

EnCana Corporation
Planning Report - Geographic

Database:	EDM	Local Co-ordinate Reference:	Well Aristocrat Angus 5-6-2
Company:	DJ/Paradox/WTX	TVD Reference:	WELL @ 4796.0ft (Original Well Elev)
Project:	Wattenberg	MD Reference:	WELL @ 4796.0ft (Original Well Elev)
Site:	New Drills	North Reference:	True
Well:	Aristocrat Angus 5-6-2	Survey Calculation Method:	Minimum Curvature
Wellbore:	Wellbore #1		
Design:	Aristocrat Angus 5-6-2		

Project	Wattenberg,		
Map System:	US State Plane 1983	System Datum:	Mean Sea Level
Geo Datum:	North American Datum 1983		
Map Zone:	Colorado Northern Zone		

Site		New Drills			
Site Position:		Northing:	1,252,450.66 ft	Latitude:	40° 1' 32.016 N
From:	Lat/Long	Easting:	3,120,627.66 ft	Longitude:	105° 4' 9.336 W
Position Uncertainty:	ft	Slot Radius:	in	Grid Convergence:	0.28 °

Well		Aristocrat Angus 5-6-2				
Well Position	+N/-S	81,070.0 ft	Northing:	1,334,729.33 ft	Latitude:	40° 14' 56.220 N
	+E/-W	123,408.8 ft	Easting:	3,243,233.54 ft	Longitude:	104° 37' 42.924 W
Position Uncertainty		ft	Wellhead Elevation:	ft	Ground Level:	4,783.0 ft

Wellbore	Wellbore #1				
Magnetics	Model Name	Sample Date	Declination (°)	Dip Angle (°)	Field Strength (nT)
	IGRF200510	12/31/2009	8.94	67.01	53,240

Design	Aristocrat Angus 5-6-2				
Audit Notes:					
Version:	Phase:	PROTOTYPE		Tie On Depth:	0.0
Vertical Section:	Depth From (TVD)	+N/-S	+E/-W	Direction	
	(ft)	(ft)	(ft)	(°)	
	0.0	0.0	0.0	28.22	

Plan Sections										
Measured	Inclination	Azimuth	Vertical	+N/-S	+E/-W	Dogleg	Build	Turn	TFO	Target
Depth	(°)	(°)	Depth	(ft)	(ft)	Rate	Rate	Rate	(°)	
(ft)			(ft)			(°/100ft)	(°/100ft)	(°/100ft)		
0.0	0.00	0.00	0.0	0.0	0.0	0.00	0.00	0.00	0.00	
700.0	0.00	0.00	700.0	0.0	0.0	0.00	0.00	0.00	0.00	
1,142.6	8.85	28.22	1,140.8	30.1	16.1	2.00	2.00	0.00	28.22	
6,260.9	8.85	28.22	6,198.2	724.0	388.6	0.00	0.00	0.00	0.00	
6,703.5	0.00	0.00	6,639.0	754.1	404.7	2.00	-2.00	0.00	180.00	
7,753.5	0.00	0.00	7,689.0	754.1	404.7	0.00	0.00	0.00	0.00	Aristocrat Angus 5-6-2

EnCana Corporation
Planning Report - Geographic

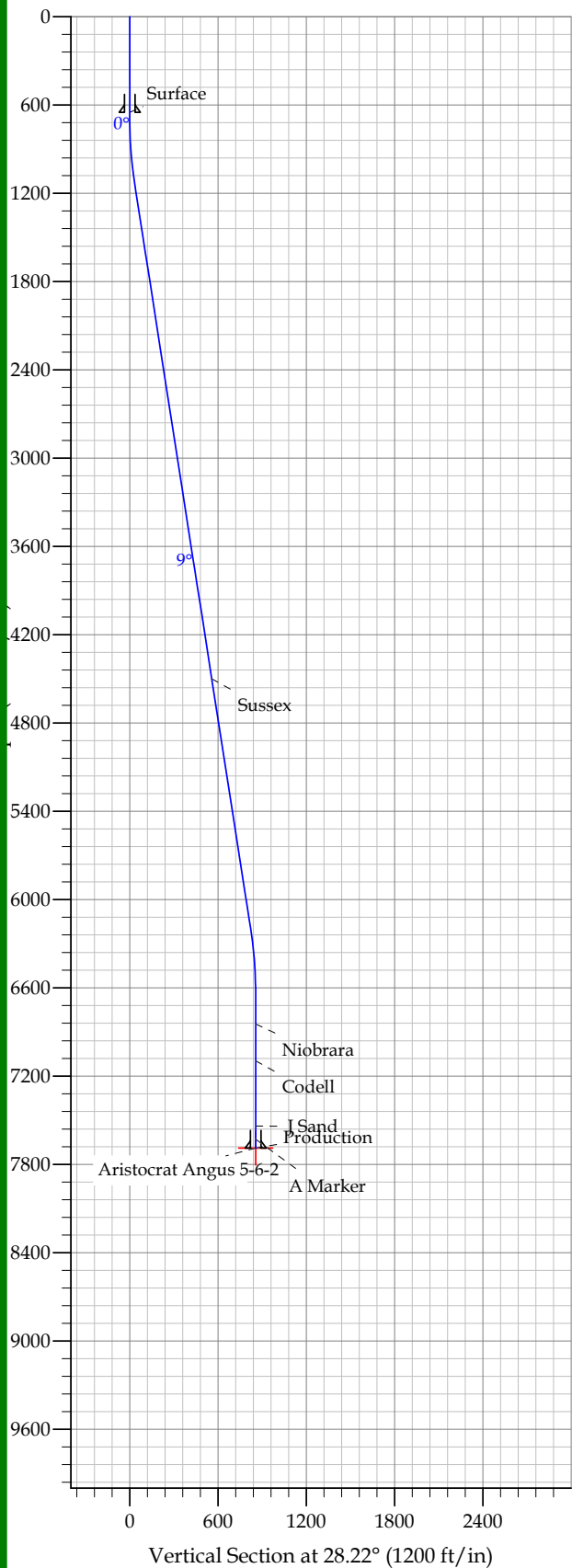
Database:	EDM	Local Co-ordinate Reference:	Well Aristocrat Angus 5-6-2
Company:	DJ/Paradox/WTX	TVD Reference:	WELL @ 4796.0ft (Original Well Elev)
Project:	Wattenberg	MD Reference:	WELL @ 4796.0ft (Original Well Elev)
Site:	New Drills	North Reference:	True
Well:	Aristocrat Angus 5-6-2	Survey Calculation Method:	Minimum Curvature
Wellbore:	Wellbore #1		
Design:	Aristocrat Angus 5-6-2		

Planned Survey										
Measured Depth (ft)	Inclination (°)	Azimuth (°)	Vertical Depth (ft)	+N/-S (ft)	+E/-W (ft)	Map Northing (ft)	Map Easting (ft)	Latitude	Longitude	
0.0	0.00	0.00	0.0	0.0	0.0	1,334,729.33	3,243,233.54	40° 14' 56.220 N	104° 37' 42.924 W	
650.0	0.00	0.00	650.0	0.0	0.0	1,334,729.33	3,243,233.54	40° 14' 56.220 N	104° 37' 42.924 W	
Surface										
700.0	0.00	0.00	700.0	0.0	0.0	1,334,729.33	3,243,233.54	40° 14' 56.220 N	104° 37' 42.924 W	
1,142.6	8.85	28.22	1,140.8	30.1	16.1	1,334,759.55	3,243,249.38	40° 14' 56.517 N	104° 37' 42.716 W	
4,543.3	8.85	28.22	4,501.0	491.1	263.6	1,335,223.03	3,243,492.30	40° 15' 1.073 N	104° 37' 39.524 W	
Sussex										
6,260.9	8.85	28.22	6,198.2	724.0	388.6	1,335,457.13	3,243,615.00	40° 15' 3.375 N	104° 37' 37.912 W	
6,703.5	0.00	0.00	6,639.0	754.1	404.7	1,335,487.35	3,243,630.84	40° 15' 3.672 N	104° 37' 37.704 W	
6,910.5	0.00	0.00	6,846.0	754.1	404.7	1,335,487.35	3,243,630.84	40° 15' 3.672 N	104° 37' 37.704 W	
Niobrara										
7,160.5	0.00	0.00	7,096.0	754.1	404.7	1,335,487.35	3,243,630.84	40° 15' 3.672 N	104° 37' 37.704 W	
Codell										
7,603.5	0.00	0.00	7,539.0	754.1	404.7	1,335,487.35	3,243,630.84	40° 15' 3.672 N	104° 37' 37.704 W	
J Sand										
7,693.5	0.00	0.00	7,629.0	754.1	404.7	1,335,487.35	3,243,630.84	40° 15' 3.672 N	104° 37' 37.704 W	
A Marker										
7,753.5	0.00	0.00	7,689.0	754.1	404.7	1,335,487.35	3,243,630.84	40° 15' 3.672 N	104° 37' 37.704 W	
Production - Aristocrat Angus 5-6-2										

Design Targets										
Target Name - hit/miss target - Shape	Dip Angle (°)	Dip Dir. (°)	TVD (ft)	+N/-S (ft)	+E/-W (ft)	Northing (ft)	Easting (ft)	Latitude	Longitude	
Aristocrat Angus 5-6-2 - plan hits target - Point	0.00	0.00	7,689.0	754.1	404.7	1,335,487.35	3,243,630.84	40° 15' 3.672 N	104° 37' 37.704 W	

Casing Points								
Measured Depth (ft)	Vertical Depth (ft)	Name			Casing Diameter (in)	Hole Diameter (in)		
650.0	650.0	Surface			8.625	12.250		
7,753.5	7,689.0	Production			4.500	7.785		

Formations						
Measured Depth (ft)	Vertical Depth (ft)	Name	Lithology	Dip (°)	Dip Direction (°)	
4,543.3	4,501.0	Sussex		0.00		
6,910.5	6,846.0	Niobrara		0.00		
7,160.5	7,096.0	Codell		0.00		
7,603.5	7,539.0	J Sand		0.00		
7,693.5	7,629.0	A Marker		0.00		

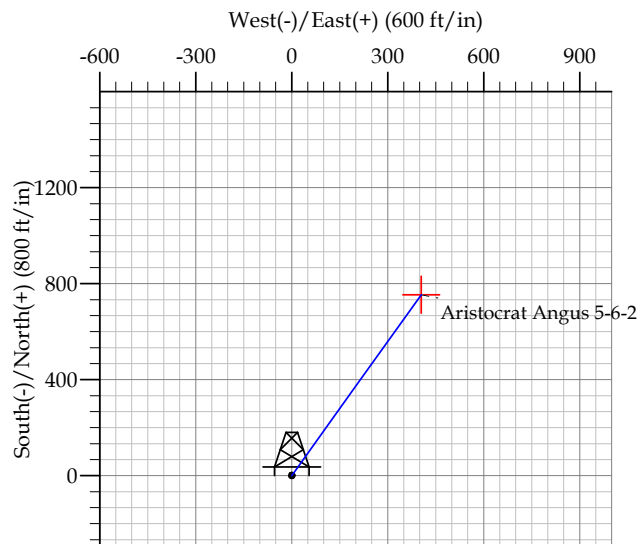


REFERENCE INFORMATION

Co-ordinate (N/E) Reference: Well Aristocrat Angus 5-6-2, True North
Vertical (TVD) Reference: WELL @ 4796.0ft (Original Well Elev)
Section (VS) Reference: Slot - (0.0N, 0.0E)
Measured Depth Reference: WELL @ 4796.0ft (Original Well Elev)
Calculation Method:

WELL DETAILS: Aristocrat Angus 5-6-2

					Ground Level:		4783.0				
+N/-S		+E/-W		Northing	Easting		Latitude		Longitude		Slot
SECTION DETAILS											
Sec	MD	Inc	Azi	TVD	+N/-S	+E/-W	DLeg	TFace	VSec	Target	
1	0.0	0.00	0.00	0.0	0.0	0.0	0.00	0.00	0.0		
2	700.0	0.00	0.00	700.0	0.0	0.0	0.00	0.00	0.0		
3	1142.6	8.85	28.22	1140.8	30.1	16.1	2.00	28.22	34.1		
4	6260.9	8.85	28.22	6198.2	724.0	388.6	0.00	0.00	821.7		
5	6703.5	0.00	0.00	6639.0	754.1	404.7	2.00	180.00	855.8		
6	7753.5	0.00	0.00	7689.0	754.1	404.7	0.00	0.00	855.8	Aristocrat Angus 5-6-2	



FORMATION TOP DETAILS

TVDPath	MDPath	Formation
4501.0	4543.3	Sussex
6846.0	6910.5	Niobrara
7096.0	7160.5	Codell
7539.0	7603.5	J Sand
7629.0	7693.5	A Marker

CASING DETAILS

TVD	MD	Name	Size
650.0	650.0	Surface	8.625
7689.0	7753.5	Production	4.500