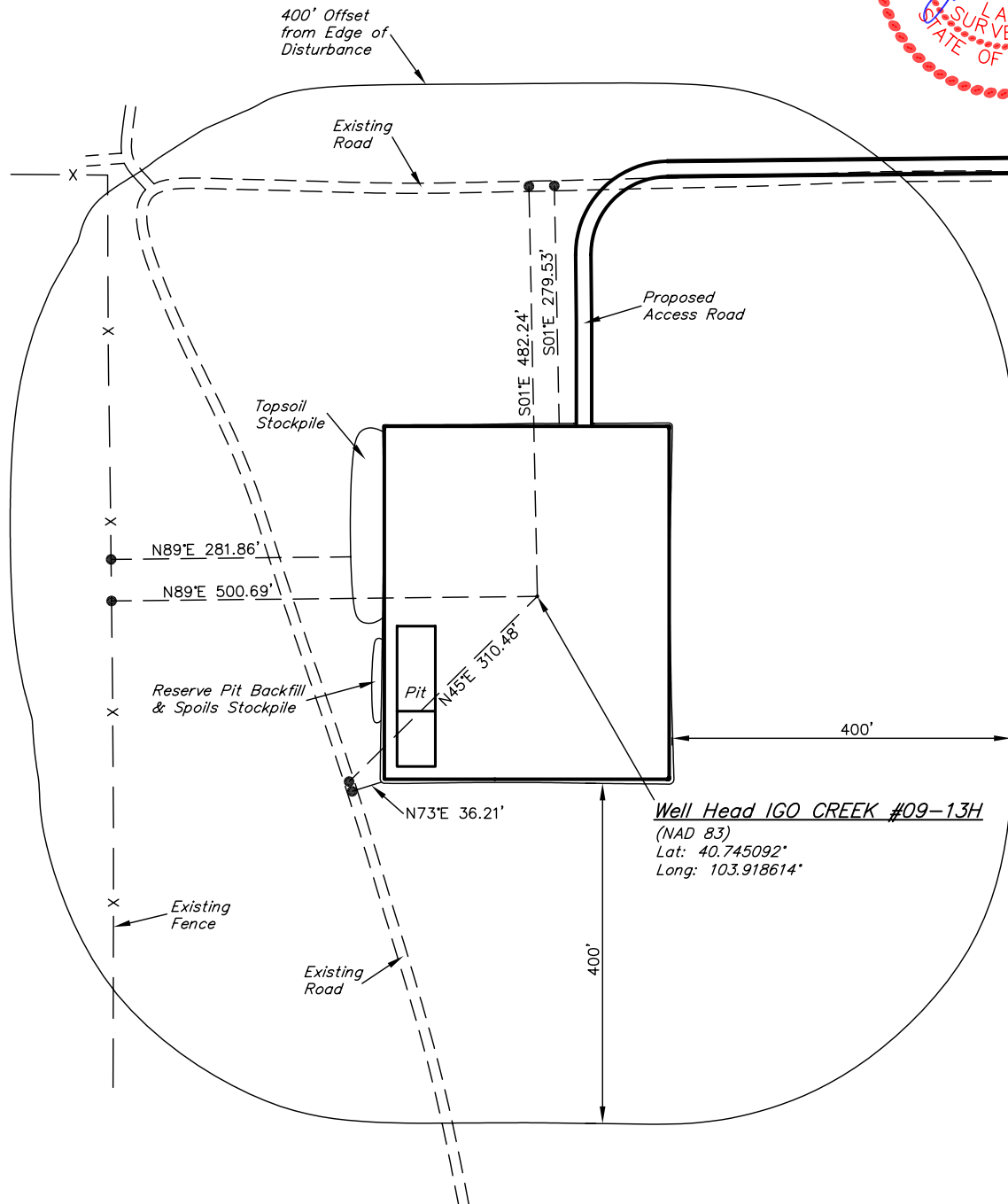




EOG RESOURCES, INC.
ADDENDUM TO LEGAL PLAT FOR
IGO CREEK #09-13H
SECTION 13, T9N, R59W, 6th. P.M.
501' FSL 501' FEL

SCALE: 1" = 200'
DATE: 12-15-10
DRAWN BY: J.I.



EOG RESOURCES, INC.

CONSTRUCTION LAYOUT FOR

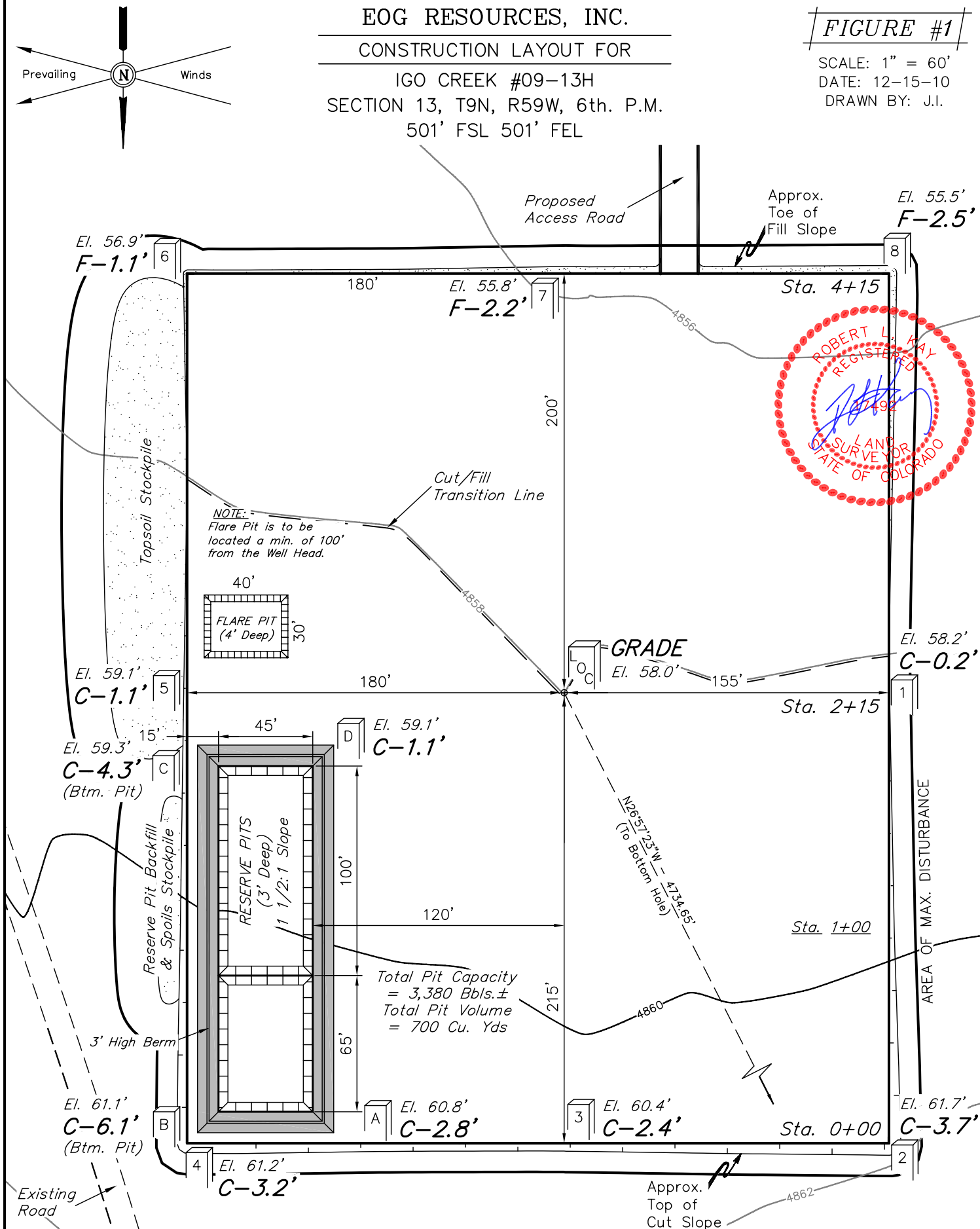
IGO CREEK #09-13H
SECTION 13, T9N, R59W, 6th. P.M.
501' FSL 501' FEL

FIGURE #1

SCALE: 1" = 60'

DATE: 12-15-10

DRAWN BY: J.I.



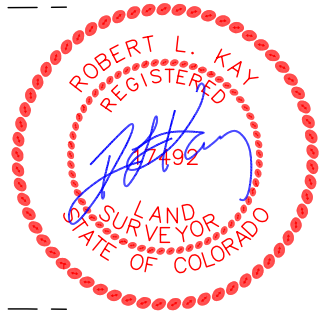
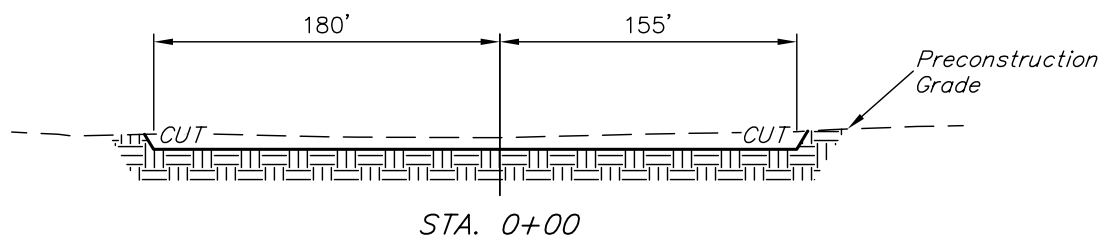
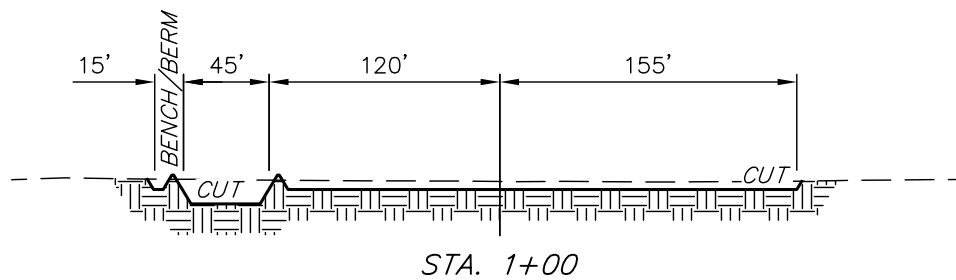
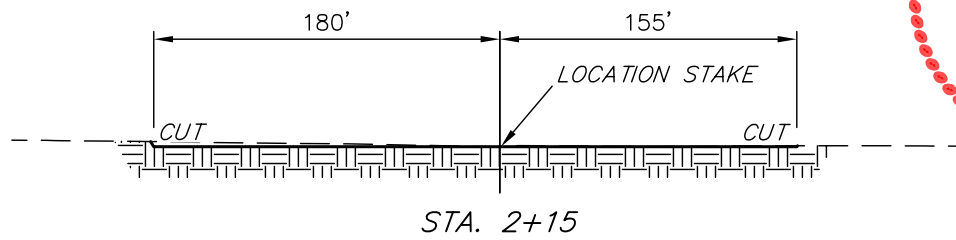
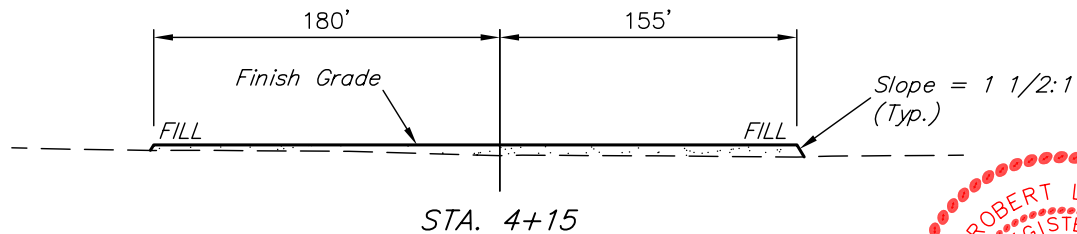
Elev. Ungraded Ground At Loc. Stake = **4858.0'**
FINISHED GRADE ELEV. AT LOC. STAKE = **4858.0'**

UINTAH ENGINEERING & LAND SURVEYING
85 So. 200 East * Vernal, Utah 84078 * (435) 789-1017

1" = 40'
X-Section
Scale
1" = 100'
DATE: 12-15-10
DRAWN BY: J.I.

EOG RESOURCES, INC.
CONSTRUCTION LAYOUT CROSS SECTIONS FOR
IGO CREEK #09-13H
SECTION 13, T9N, R59W, 6th. P.M.
501' FSL 501' FEL

FIGURE #2



APPROXIMATE ACREAGES
WELL SITE DISTURBANCE = ± 3.974 ACRES
ACCESS ROAD DISTURBANCE = ± 3.556 ACRES
TOTAL = ± 7.530 ACRES

* NOTE:
FILL QUANTITY INCLUDES
5% FOR COMPACTION

APPROXIMATE YARDAGES

(6") Topsoil Stripping = 2,690 Cu. Yds.
Remaining Location = 3,780 Cu. Yds.
TOTAL CUT = 6,470 CU.YDS.
FILL = 3,430 CU.YDS.

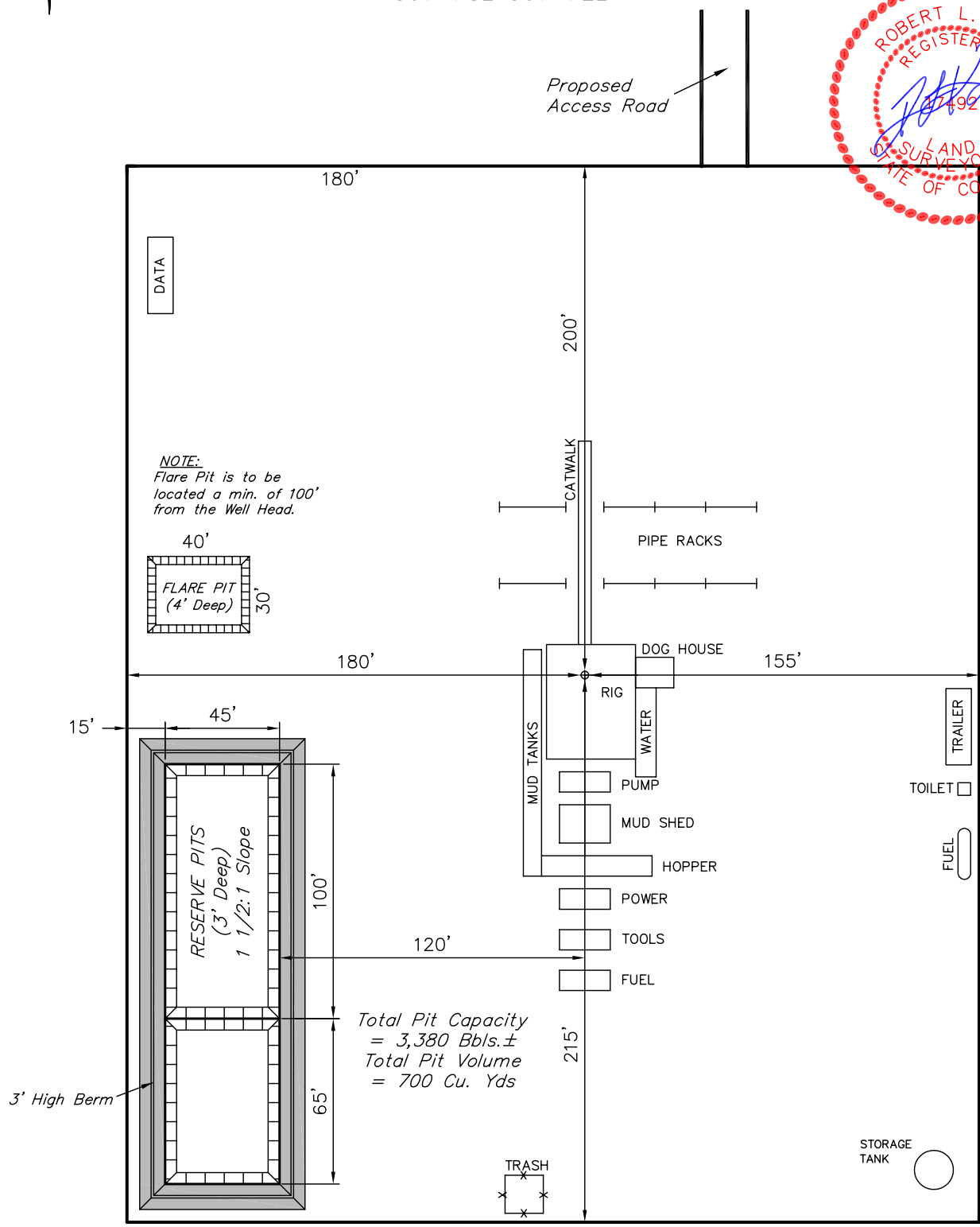
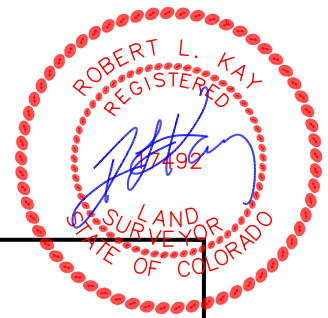
EXCESS MATERIAL = 3,040 Cu. Yds.
Topsoil & Pit Backfill = 3,040 Cu. Yds.
(1/2 Pit Vol.)
EXCESS UNBALANCE = 0 Cu. Yds.
(After Interim Rehabilitation)

UINTAH ENGINEERING & LAND SURVEYING
85 So. 200 East * Vernal, Utah 84078 * (435) 789-1017



EOG RESOURCES, INC.
TYPICAL RIG LAYOUT FOR
IGO CREEK #09-13H
SECTION 13, T9N, R59W, 6th. P.M.
501' FSL 501' FEL

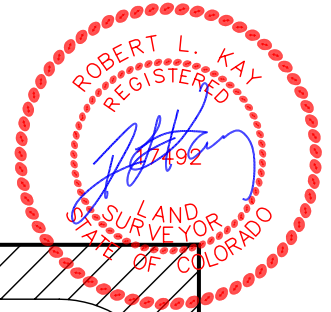
FIGURE #3
SCALE: 1" = 60'
DATE: 12-15-10
DRAWN BY: J.I.



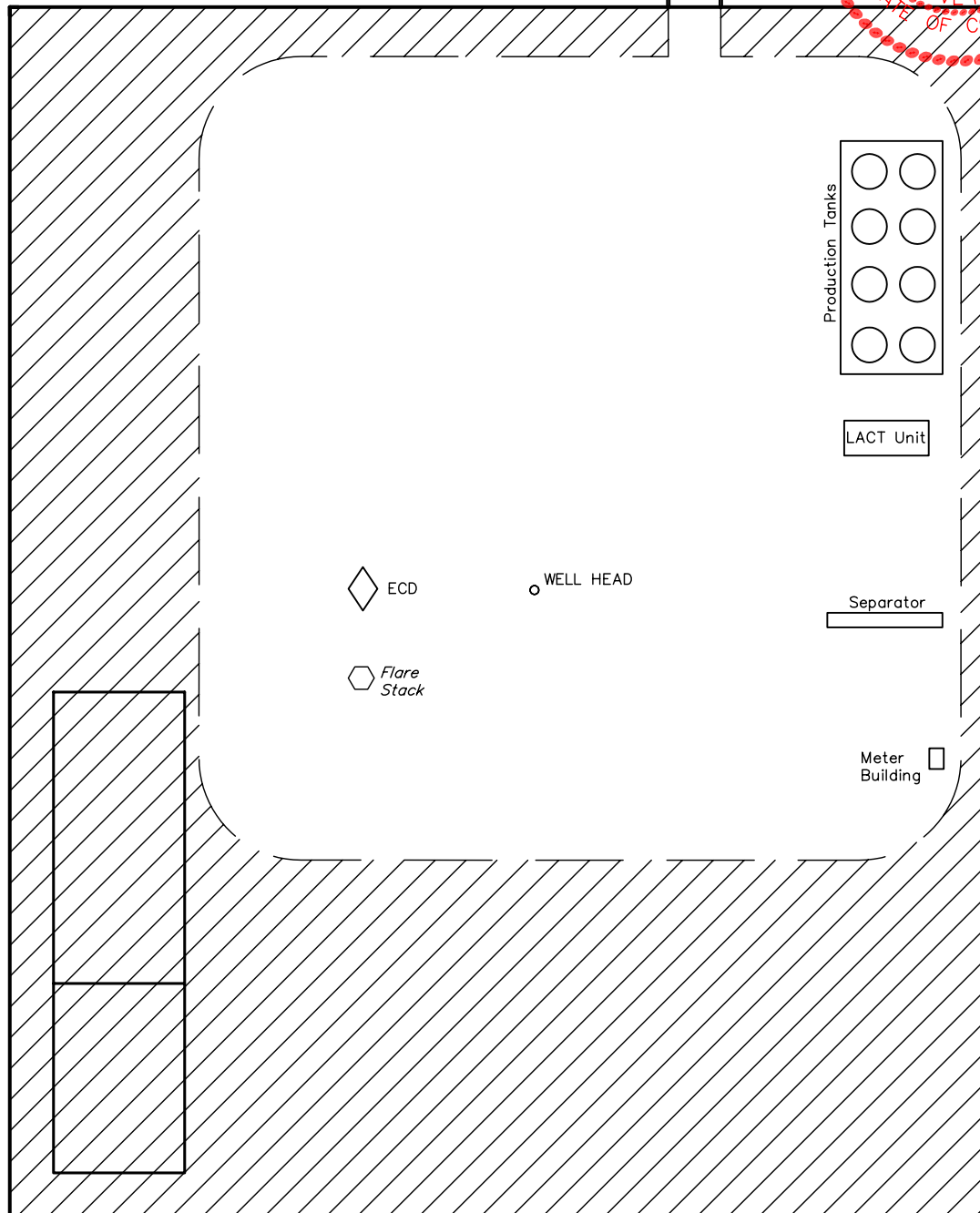


EOG RESOURCES, INC.
RECLAMATION DIAGRAM FOR
IGO CREEK #09-13H
SECTION 13, T9N, R59W, 6th. P.M.
501' FSL 501' FEL

FIGURE #4
SCALE: 1" = 60'
DATE: 12-15-10
DRAWN BY: J.I.



Access Road



APPROXIMATE ACREAGES
UN-RECLAIMED = ± 1.638 ACRES

 RECLAIMED AREA

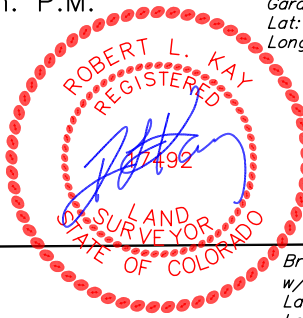
EOG RESOURCES, INC.

LOCATION DRAWING FOR

IGO CREEK #09-13H
SECTION 13, T9N, R59W, 6th. P.M.
501' FSL 501' FEL

FIGURE #5

NE Cor. Sec. 13
2010 UELS Alum.
Cap, 0.3' High,
Garden Post
Lat: 40.758336°
Long: 103.916975°



Brass Cap, Flush
w/Ground
Lat: 40.751033°
Long: 103.916883°

R
59
W
R
58
W

Section Line
N00°30'21"W
2660.72' (Meas.)
N00°30'17"W - 2660.94' (Meas.)

N43°00'00"E
6385.00'
(To Building)

EAST
501.04'
(To Property
Line)

S42°00'00"E
2445.00'
(To Water
Well)

1918 Brass Cap,
1.2' High, N-E Fence
Lat: 40.743733°
Long: 103.916789°

**TIMBRO
RANCH &
CATTLE CO.
LLC.**

WEST - 4616.00'
(To County Road)
WEST - 4595.00'
(To Power Line)

Set Marked Stone,
0.8' High, N-W Fence
Lat: 40.743653°
Long: 103.926278°

Section Line

S89°25'51"W - 2630.00' (Meas.)

S89°33'10"W
2649.33' (Meas.)

SW Cor. Sec. 13
2010 UELS Alum.
Cap, Flush W/Ground,
Garden Post
Lat: 40.743589°
Long: 103.935836°

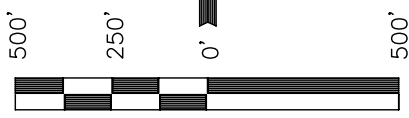
1/4 Section Line

1/4 Section Line

13

1/16 Section Line

1/16 Section Line



SCALE
DATE: 12-15-10
DRAWN BY: J.I.

PLANT COMMUNITY

- ☐ DISTURBED GRASSLAND
- ☐ NATIVE GRASSLAND
- ☐ SHRUB LAND
- ☐ PLAINS RIPARIAN
- ☐ MOUNTAIN RIPARIAN
- ☐ FOREST LAND
- ☐ WETLANDS AQUATIC
- ☐ ALPINE
- ☐ OTHER (Describe): _____

CURRENT LAND USE

- CROP LAND: ☐ IRRIGATED ☐ DRY LAND ☐ IMPROVED PASTURE ☐ HAY MEADOW ☐ CRP
- NON-CROP LAND: ☐ RANGELAND ☐ TIMBER ☐ RECREATIONAL ☐ OTHER (Describe) _____
- SUBDIVIDED: ☐ INDUSTRIAL ☐ COMMERCIAL ☐ RESIDENTIAL _____

FUTURE LAND USE

- CROP LAND: ☐ IRRIGATED ☐ DRY LAND ☐ IMPROVED PASTURE ☐ HAY MEADOW ☐ CRP
- NON-CROP LAND: ☐ RANGELAND ☐ TIMBER ☐ RECREATIONAL ☐ OTHER (Describe) _____
- SUBDIVIDED: ☐ INDUSTRIAL ☐ COMMERCIAL ☐ RESIDENTIAL _____