



January 14, 2011

Remediation #4365

Mr. Mike Cox
Environmental Coordinator
Noble Energy, Inc.
804 Grand Avenue
Platteville, Colorado 80651

Mr. Cliff Cox
Foundation Energy Management
P.O. Box 17127
Fort Worth, TX 76102

**RE: Fourth Quarter 2010 Remediation and Monitoring Report
Becky #2-6 Natural Gas Wellhead Site
Weld County, Colorado**

Dear Mr. Cox:

LT Environmental, Inc. (LTE) was retained by Noble Energy, Inc. (Noble) and Foundation Energy Management (Foundation) to conduct corrective actions at the Becky #2-6 natural gas wellhead site (Site) located approximately 3.5 miles west of the intersection of Interstate 25 and Weld County Road (WCR) 52 in Weld County, Colorado. A Site Map is provided as Figure 1.

LTE, on behalf of Noble and Foundation, has completed system design, installation, and startup of the air sparging/soil vapor extraction (AS/SVE) remediation system. LTE is continuing to conduct groundwater monitoring at the Site to evaluate previously documented groundwater impact. This correspondence is provided as the fourth quarter 2010 remediation and monitoring report, and summarizes activities conducted at the Site from October 1, 2010 through December 31, 2010. Activities conducted during the reporting period and summarized in this report include operation and maintenance (O&M) of the remediation system, shutdown and removal of the remediation trailer, and quarterly groundwater sampling conducted December 1, 2010.

Remediation System Description

The AS system is designed to introduce ambient air into the subsurface water column to induce dissolved hydrocarbon volatilization and to promote aerobic microbial decomposition of petroleum constituents (Figure 2). The SVE system is designed to volatilize petroleum constituents adsorbed onto soil particles and to remove petroleum vapors released from the groundwater by the AS process (Figure 3). AS and SVE wells are connected to a remediation equipment trailer housing the equipment for the AS/SVE systems. The distribution and spacing of these wells are based on site-specific soil analytical data, groundwater quality data, contamination profiles, geological characteristics, experience with similar systems, and the location and influence area of remediation

wells. Additional details of the remediation system design and installation were presented in the previously submitted report titled *Remediation System Installation, Startup, and Groundwater Sampling Results* dated January 9, 2009. The remediation system began operation at the Site on November 17, 2008.

Remediation System Operation and Maintenance

O&M activities conducted in the reporting period included:

- Completion of routine, weekly, monthly, and quarterly O&M checks to monitor and adjust system performance;
- Generator maintenance, which included changing the oil and oil filters;
- Repair of generator oil line, and;
- Replacement of the engine alternator.

The AS/SVE remediation system operated at the Site until November 16, 2010. On November 17, 2010 the remediation trailer was disconnected from the system wells and was removed from the Site. Cessation of active remediation was conducted following mitigation of the vast majority of hydrocarbon impacts and successful attainment of cleanup goals for all monitoring wells onsite. The site will now begin the final phase of the remediation program and begin monitoring under static conditions.

Groundwater Sampling Procedures

One groundwater monitoring well (MW-10) was sampled at the Site on November 12, 2010 to ensure that the well did not exhibit groundwater impact before the remediation trailer was removed. MW-10 was the only remaining well that exhibited groundwater impact in the previous monitoring event (September 22, 2010).

Seven groundwater monitoring wells were sampled at the Site on December 1, 2010 to determine the current plume extent. Prior to sampling each well, the depth to groundwater was measured and recorded for calculating purge volumes (Table 1).

Each well was purged of three casing volumes prior to collection of groundwater samples. Groundwater samples were collected from the well points by advancing disposable 3/16-inch diameter polyethylene tubing below the groundwater table inside the 1-inch diameter polyvinyl chloride (PVC) well casing. A peristaltic pump was utilized to collect the groundwater samples prior to placement into laboratory prepared sample bottles. Groundwater samples were collected in 40-milliliter vials, placed on ice, and delivered under chain-of-custody (COC) protocol to Origins Laboratory located in Denver, Colorado. Samples were analyzed for benzene, toluene, ethylbenzene, and total xylenes (BTEX) by Environmental Protection Agency Method 8260B.

Hydrogeology / Field Measurements

During the December 2010 sampling event, the depths to static groundwater level ranged from 8.59 feet below top of casing (BTOC) in MW-02 to 9.36 feet BTOC in MW-25 (Table 1). Monitoring Well MW-23 was dry. The groundwater flow direction was to the north with an average hydraulic gradient of approximately 0.024 feet per foot.

Groundwater Analytical Results

The Colorado Department of Public Health and Environmental (CDPHE) Water Quality Control Commission (WQCC) has established Regulation 41 - The Basic Standards for Groundwater for BTEX of 5.0 micrograms per liter (ug/L) for benzene, 560 ug/L for toluene, 700 ug/L for ethylbenzene, and 1,400 ug/L for total xylenes. Table 1 summarizes groundwater analytical results for samples collected during all monitoring events. The laboratory analytical report, laboratory quality assurance/quality control data, and COC documentation are included as Attachment 1.

Seven groundwater samples were collected and submitted to Origins Laboratory for BTEX analysis during the December 1, 2010 sampling event. Free-phase petroleum hydrocarbons were not identified in any of the monitoring wells. Groundwater analytical results indicated that BTEX compounds were not detected above the CDPHE-WQCC Regulation 41 standards in any of the monitoring wells. Groundwater analytical results for the December 1, 2010 sampling event are summarized in Table 1 and illustrated on Figure 4.

Summary and Conclusions


As seen in Figure 4 and Table 1, the effectiveness of the AS/SVE system is evident by the mitigation of the previously impacted area from June 2008 (pre-remediation) to December 2010. There was no remaining impact identified above standards in any monitoring wells during the December 2010 monitoring event.

Remediation system operation was discontinued in November 2010 due to the lack of remaining site impact. The December 2010 groundwater monitoring event was the first static monitoring event. LTE/Noble will continue to conduct static groundwater monitoring at the Site with the goal of obtaining four consecutive quarters of groundwater results in attainment with the WQCC Regulation 41. The next groundwater sampling event will be conducted in March 2011. Groundwater monitoring will continue to be conducted at the Site on a quarterly basis until site closure status is received from the Colorado Oil and Gas Conservation Commission.

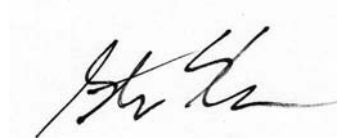
LTE appreciates the opportunity to provide environmental services to Noble and Foundation. Please call us at 303-433-9788 if you have any questions or comments regarding this report.

Sincerely,

LT ENVIRONMENTAL, INC.



Rob Rebel, P.E.
Project Manager



Steve D. Kahn, P.E.
Client Manager/Senior Engineer

Attachments

Table 1: Groundwater Quality Data

Figure 1: Site Map

Figure 2: Air Sparging System Layout

Figure 3: Soil Vapor Extraction System Layout

Figure 4: Groundwater Analytical Results – December 1, 2010

Attachment 1: Laboratory Analytical Report

TABLE

TABLE 1

GROUNDWATER QUALITY DATA
BECKY #2-6
WELD COUNTY, COLORADO
NOBLE ENERGY, INC.

Well ID	Date	Depth to Product (feet btoc)	Depth to Water (feet btoc)	Product Thickness (feet)	Benzene (ug/L)	Toluene (ug/L)	Ethylbenzene (ug/L)	Total Xylenes (ug/L)
MW-1	6/24/2008		7.92		3.52	<1.00	55.05	25.16
	11/10/2008		7.66		<1.00	<1.00	<1.00	<3.00
	2/23/2009		7.46		<1.00	<1.00	<1.00	<3.00
	5/27/2009		6.74		<1.00	<1.00	<1.00	<3.00
	9/1/2009		7.78		<1.00	<1.00	<1.00	<3.00
	12/28/2009		6.89		<1.00	<1.00	<1.00	<3.00
MW-2	6/24/2008		8.01		<1.00	<1.00	<1.00	<3.00
MW-3	6/24/2008		8.09		6.43	<1.00	<1.00	5.15
	11/10/2008		7.83		1.26	<1.00	<1.00	<3.00
	2/23/2009		7.68		<1.00	<1.00	<1.00	<3.00
	5/27/2009		6.98		2.31	<1.00	<1.00	<3.00
	9/1/2009		8.03		<1.00	<1.00	<1.00	<3.00
	12/28/2009		7.21		<1.00	<1.00	<1.00	<3.00
MW-4	6/24/2008		7.88		<1.00	<1.00	<1.00	<3.00
	11/10/2008		7.73		<1.00	<1.00	<1.00	<3.00
	2/23/2009		7.59		<1.00	<1.00	<1.00	<3.00
	5/27/2009		6.82		<1.00	<1.00	<1.00	<3.00
	9/1/2009		8.07		<1.00	<1.00	<1.00	<3.00
	12/28/2009		7.01		<1.00	<1.00	<1.00	<3.00
MW-5	6/24/2008		8.08		<1.00	<1.00	<1.00	<3.00
MW-6	6/24/2008		7.85		<1.00	<1.00	<1.00	<3.00
MW-7	6/24/2008		8.10		358.40	1.02	277.60	3,120.29
	11/10/2008		7.98		725	<1.00	493	6,008.8
	2/23/1009		7.36		5.03	<1.00	9.04	141
	5/27/2009		7.09		10.4	1.16	362	498.2
	9/1/2009		8.14		<1.00	<1.00	<1.00	438
	12/28/2009		7.39		<1.00	<1.00	<1.00	19.1
	3/11/2010		7.81		<1.00	<1.00	2.71	35.1
	6/17/2010		8.75		<1.00	<1.00	<1.00	57.7
	9/22/2010		9.70		<1.00	<1.00	10.1	40.4
	12/1/2010		8.59		<1.00	<1.00	2.1	10.5

TABLE 1

GROUNDWATER QUALITY DATA
BECKY #2-6
WELD COUNTY, COLORADO
NOBLE ENERGY, INC.

Well ID	Date	Depth to Product (feet btoc)	Depth to Water (feet btoc)	Product Thickness (feet)	Benzene (ug/L)	Toluene (ug/L)	Ethylbenzene (ug/L)	Total Xylenes (ug/L)
MW-8	6/24/2008		7.60		<1.00	<1.00	<1.00	<3.00
	11/10/2008		7.59		<1.00	<1.00	<1.00	<3.00
	2/23/2009		7.34		<1.00	<1.00	<1.00	<3.00
	5/27/2009		6.59		<1.00	<1.00	<1.00	<3.00
	9/1/2009		7.64		<1.00	<1.00	<1.00	<3.00
	12/28/2009		6.87		<1.00	<1.00	<1.00	<3.00
MW-9	6/24/2008		8.45		430.20	<1.00	35.57	396.80
	11/10/2008		8.32		175	<1.00	24.7	77.90
	2/23/2009		8.29		12.8	<1.00	1.56	3.70
	5/27/2009		7.46		99.4	<1.00	15.0	77.3
	9/1/2009		5.61		243	<1.00	15.8	38.0
	12/28/2009		7.85		5.23	<1.00	<1.00	6.95
	3/11/2010		8.35		61.0	<1.00	9.53	31.5
	6/17/2010		9.12		1.85	<1.00	<1.00	<1.00
	9/22/2010		10.00		<1.00	<1.00	<1.00	<1.00
	12/1/2010		9.02		<1.00	<1.00	<1.00	<1.00
MW-10	6/24/2008		8.26		1,254.2	1.84	223.60	2,373.80
	11/10/2008	8.13	8.63	0.50	NA	NA	NA	NA
	11/13/2008	8.21	8.44	0.23	NA	NA	NA	NA
	2/23/2009	8.09	8.01	0.08	NA	NA	NA	NA
	5/27/2009	ND	7.30	0.00	145	<1.00	86.6	1,145.8
	9/1/2009	ND	8.38	0.00	176	<1.00	<1.00	542
	12/28/2009	ND	7.71	0.00	183	<1.00	120	570.4
	3/11/2010	ND	8.12	0.00	139	<1.00	135	969.2
	6/17/2010	ND	8.92	0.00	113	<1.00	86.2	1,260
	9/22/2010	ND	9.65	0.00	11.2	<1.00	46.3	867.8
	12/1/2010	ND	8.77	0.00	<1.00	<1.00	<1.00	<1.00
MW-11	6/24/2008		7.52		<1.00	<1.00	1.35	14.70
	11/10/2008		7.48		<1.00	<1.00	<1.00	5.00
	2/23/2009		7.25		<1.00	<1.00	<1.00	<3.00
	5/28/2009		6.60		<1.00	<1.00	<1.00	<3.00
	9/1/2009		8.62		<1.00	<1.00	<1.00	<3.00
	12/28/2009		6.90		<1.00	<1.00	<1.00	<3.00
MW-12	6/24/2008		7.70		<1.00	<1.00	<1.00	<3.00

TABLE 1

GROUNDWATER QUALITY DATA
BECKY #2-6
WELD COUNTY, COLORADO
NOBLE ENERGY, INC.

Well ID	Date	Depth to Product (feet btoc)	Depth to Water (feet btoc)	Product Thickness (feet)	Benzene (ug/L)	Toluene (ug/L)	Ethylbenzene (ug/L)	Total Xylenes (ug/L)
MW-13	6/24/2008		8.68		1,616.2	<1.00	249.20	3,551.0
	11/10/2008		8.85		684	<1.00	84.0	152.11
	2/23/2009		8.72		390	<1.00	26.7	86.5
	5/28/2009		8.75		500	<1.00	69.8	120
	9/1/2009		8.90		329	<1.00	21.8	1.05
	12/28/2009		8.43		244	<1.00	86.3	442.12
	3/11/2010		8.72		34.2	<1.00	14.4	44.2
	6/17/2010		9.30		3.14	<1.00	1.27	2.22
	9/22/2010				WELL DRY			
	12/1/2010		9.31		1.59	<1.00	1.67	<1.00
MW-14	6/24/2008		9.35		3.66	1.26	1.69	21.65
	11/10/2008		9.56		<1.00	<1.00	<1.00	<3.00
	2/23/2009		9.48		<1.00	<1.00	<1.00	<3.00
	5/27/2009		8.65		<1.00	<1.00	<1.00	<3.00
	9/1/2009		8.84		<1.00	<1.00	<1.00	<3.00
	12/28/2009		9.19		<1.00	<1.00	<1.00	<3.00
MW-15	6/24/2008		9.34		<1.00	<1.00	<1.00	4.31
	11/10/2008		9.89		<1.00	<1.00	<1.00	<3.00
	2/23/2009		9.66		<1.00	<1.00	<1.00	<3.00
	5/28/2009		8.89		<1.00	<1.00	<1.00	<3.00
	9/1/2009		9.83		<1.00	<1.00	<1.00	<3.00
	12/28/2009		9.45		<1.00	<1.00	<1.00	<3.00
MW-16	6/24/2008		9.19		6.28	<1.00	170.65	1,998.36
	11/10/2008	9.83	9.84	0.01	NA	NA	NA	NA
	11/13/2008	ND	9.88	0.00	<1.00	<1.00	<1.00	220.86
	2/23/2009	ND	9.62	0.00	<1.00	<1.00	9.12	89.0
	5/27/2009	ND	8.81	0.00	<1.00	<1.00	14.3	152
	9/1/2009	ND	9.78	0.00	<1.00	<1.00	<1.00	88.9
	12/28/2009	ND	9.49	0.00	<1.00	<1.00	12.9	73.6

TABLE 1

GROUNDWATER QUALITY DATA

BECKY #2-6

WELD COUNTY, COLORADO

NOBLE ENERGY, INC.

Well ID	Date	Depth to Product (feet btoc)	Depth to Water (feet btoc)	Product Thickness (feet)	Benzene (ug/L)	Toluene (ug/L)	Ethylbenzene (ug/L)	Total Xylenes (ug/L)
MW-17	6/24/2008		9.16		<1.00	<1.00	<1.00	13.46
	11/10/2008		10.27		<1.00	<1.00	<1.00	<3.00
	2/23/2009		9.98		<1.00	<1.00	<1.00	<3.00
	5/27/2009		10.95		NA			
	9/1/2009		9.87		<1.00	<1.00	<1.00	<3.00
MW-18	6/24/2008		9.37		<1.00	<1.00	<1.00	3.24
	11/10/2008		10.13		<1.00	<1.00	<1.00	3.36
	2/23/2009		9.92		<1.00	<1.00	<1.00	<3.00
	5/28/2009		9.14		<1.00	<1.00	<1.00	<3.00
	9/1/2009		10.05		<1.00	<1.00	<1.00	<3.00
	12/28/2009		9.61		<1.00	<1.00	<1.00	<3.00
MW-19	6/24/2008		8.73		<1.00	<1.00	<1.00	3.53
MW-20	6/24/2008		8.52		<1.00	<1.00	<1.00	<3.00
MW-21	6/24/2008		8.20		<1.00	<1.00	<1.00	<3.00
MW-22	6/24/2008		8.66		<1.00	<1.00	<1.00	<3.00
MW-23	6/24/2008		9.14		83.13	1.43	164.46	1,283
	11/10/2008		8.95		1.46	<1.00	1.54	<3.00
	2/23/2009				WELL DRY			
	9/1/2009				WELL DRY			
	12/28/2009				WELL DRY			
	3/11/2010				WELL DRY			
	6/17/2010				WELL DRY			
	9/22/2010				WELL DRY			
	12/1/2010				WELL DRY			
MW-24	6/24/2008		9.00		<1.00	<1.00	<1.00	<3.00
	11/10/2008		8.85		<1.00	<1.00	<1.00	6.27
	2/23/2009		8.84		<1.00	<1.00	<1.00	<3.00
	5/27/2009		8.00		<1.00	<1.00	<1.00	<3.00
	9/1/2009		9.09		<1.00	<1.00	<1.00	<3.00
	12/28/2009		8.52		<1.00	<1.00	<1.00	<3.00

TABLE 1

GROUNDWATER QUALITY DATA
BECKY #2-6
WELD COUNTY, COLORADO
NOBLE ENERGY, INC.

Well ID	Date	Depth to Product (feet btoc)	Depth to Water (feet btoc)	Product Thickness (feet)	Benzene (ug/L)	Toluene (ug/L)	Ethylbenzene (ug/L)	Total Xylenes (ug/L)
MW-25	6/24/2008		8.86		120.95	<1.00	17.52	602.10
	11/10/2008		8.85		47.5	<1.00	7.73	28.8
	2/23/2009		8.71		20.3	<1.00	1.64	3.86
	5/27/2009		7.95		29.9	<1.00	7.40	7.13
	9/1/2009		9.05		<1.00	<1.00	<1.00	<3.00
	12/28/2009		8.49		<1.00	<1.00	<1.00	<3.00
	3/11/2010		8.95		1.23	<1.00	<1.00	<3.00
	6/17/2010		9.59		2.33	4.41	<1.00	2.16
	9/22/2010		10.38		<1.00	<1.00	<1.00	<1.00
	12/1/2010		9.36		<1.00	<1.00	<1.00	2.14
MW-26	6/24/2008		8.35		75.72	<1.00	71.24	598.70
	11/10/2008		8.47		57.4	<1.00	36.4	47.60
	2/23/2009		8.26		<1.00	<1.00	<1.00	<3.00
	5/27/2009		7.50		2.02	<1.00	1.97	<3.00
	9/1/2009		8.54		<1.00	<1.00	<1.00	<3.00
	12/28/2009		8.07		<1.00	<1.00	<1.00	<3.00
	3/11/2010		8.63		<1.00	<1.00	<1.00	<3.00
	6/17/2010		9.10		8.15	1.98	<1.00	<1.00
	9/22/2010		9.90		<1.00	<1.00	<1.00	<1.00
	12/1/2010		8.88		<1.00	<1.00	<1.00	<1.00
MW-27	6/24/2008		8.73		<1.00	<1.00	<1.00	<3.00
	11/10/2008		9.07		1.72	<1.00	<1.00	18.4
	2/23/2009		8.87		<1.00	<1.00	<1.00	<3.00
	5/27/2009		8.03		<1.00	<1.00	<1.00	<3.00
	9/1/2009		9.07		<1.00	<1.00	<1.00	<3.00
	12/28/2009		8.71		<1.00	<1.00	<1.00	<3.00
MW-28	6/24/2008		8.85		<1.00	<1.00	<1.00	2.97
MW-29	6/24/2008		8.89		<1.00	<1.00	<1.00	<3.00
	11/10/2008		9.69		<1.00	<1.00	<1.00	<3.00
	2/23/2009		9.46		<1.00	<1.00	4.18	5.23
	5/27/2009		8.65		<1.00	<1.00	<1.00	<3.00
	9/1/2009		9.61		<1.00	<1.00	<1.00	<3.00
	12/28/2009		10.36		<1.00	<1.00	<1.00	<3.00

TABLE 1

GROUNDWATER QUALITY DATA
BECKY #2-6
WELD COUNTY, COLORADO
NOBLE ENERGY, INC.

Well ID	Date	Depth to Product (feet btoc)	Depth to Water (feet btoc)	Product Thickness (feet)	Benzene (ug/L)	Toluene (ug/L)	Ethylbenzene (ug/L)	Total Xylenes (ug/L)
MW-30	6/24/2008		8.57		<1.00	<1.00	<1.00	<3.00
	11/10/2008		8.56		<1.00	<1.00	<1.00	2.88
	2/23/2009		8.46		<1.00	<1.00	<1.00	<3.00
	5/27/2009		7.69		<1.00	<1.00	<1.00	<3.00
	9/1/2009		8.67		<1.00	<1.00	<1.00	<3.00
	12/28/2009		8.26		<1.00	<1.00	<1.00	<3.00
MW-31	6/24/2008		7.94		<1.00	<1.00	<1.00	<3.00
MW-32	7/7/2008				<1.0	<1.0	<1.0	<1.0
	11/10/2008		9.57		<1.00	<1.00	<1.00	<3.00
	2/23/2009		9.42		<1.00	<1.00	<1.00	<3.00
	5/27/2009		8.70		<1.00	<1.00	<1.00	<3.00
	9/1/2009		9.74		<1.00	<1.00	<1.00	<3.00
	12/28/2009		8.96		<1.00	<1.00	<1.00	<3.00
MW-33	7/7/2008				1.4	<1.0	10	5.9
	11/10/2008				WELL DESTROYED			
MW-34	7/7/2008				160	<1.00	370	2,800
	11/10/2008		8.13		85.7	<1.00	89.4	108
	2/23/2009		7.98		<1.00	<1.00	<1.00	<3.00
	5/27/2009		7.26		<1.00	<1.00	<1.00	<3.00
	9/1/2009		9.58		<1.00	<1.00	<1.00	<3.00
	12/28/2009		7.57		<1.00	<1.00	<1.00	<3.00
	3/11/2010		8.02		<1.00	<1.00	<1.00	<3.00
	6/17/2010		8.97		5.19	3.04	<1.00	<1.00
	9/22/2010				WELL DRY			
	12/1/2010		8.83		<1.00	<1.00	<1.00	<1.00
CDPHE-WQCC Regulation 41 Groundwater Standards					5.0	560	700	1,400

NOTES:

CDPHE-WQCC - Colorado Department of Public Health and Environmental Water Quality Control Commission

Benzene, toluene, ethylbenzene, total xylenes analyzed by EPA Method 8260B

btoc - below top of casing

ug/L - micrograms per liter

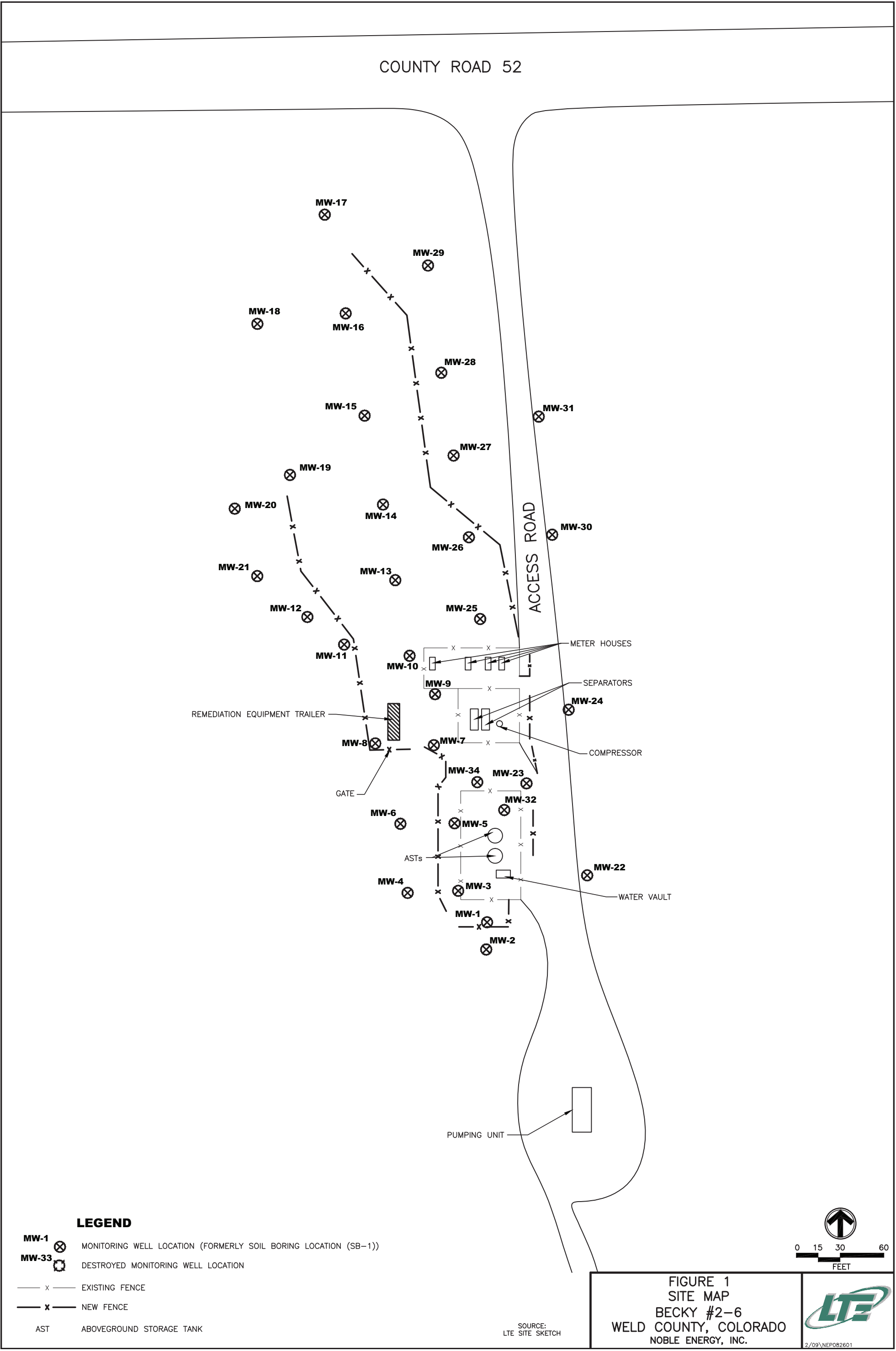
< indicates result is less than the stated laboratory method detection limit

NA - not analyzed

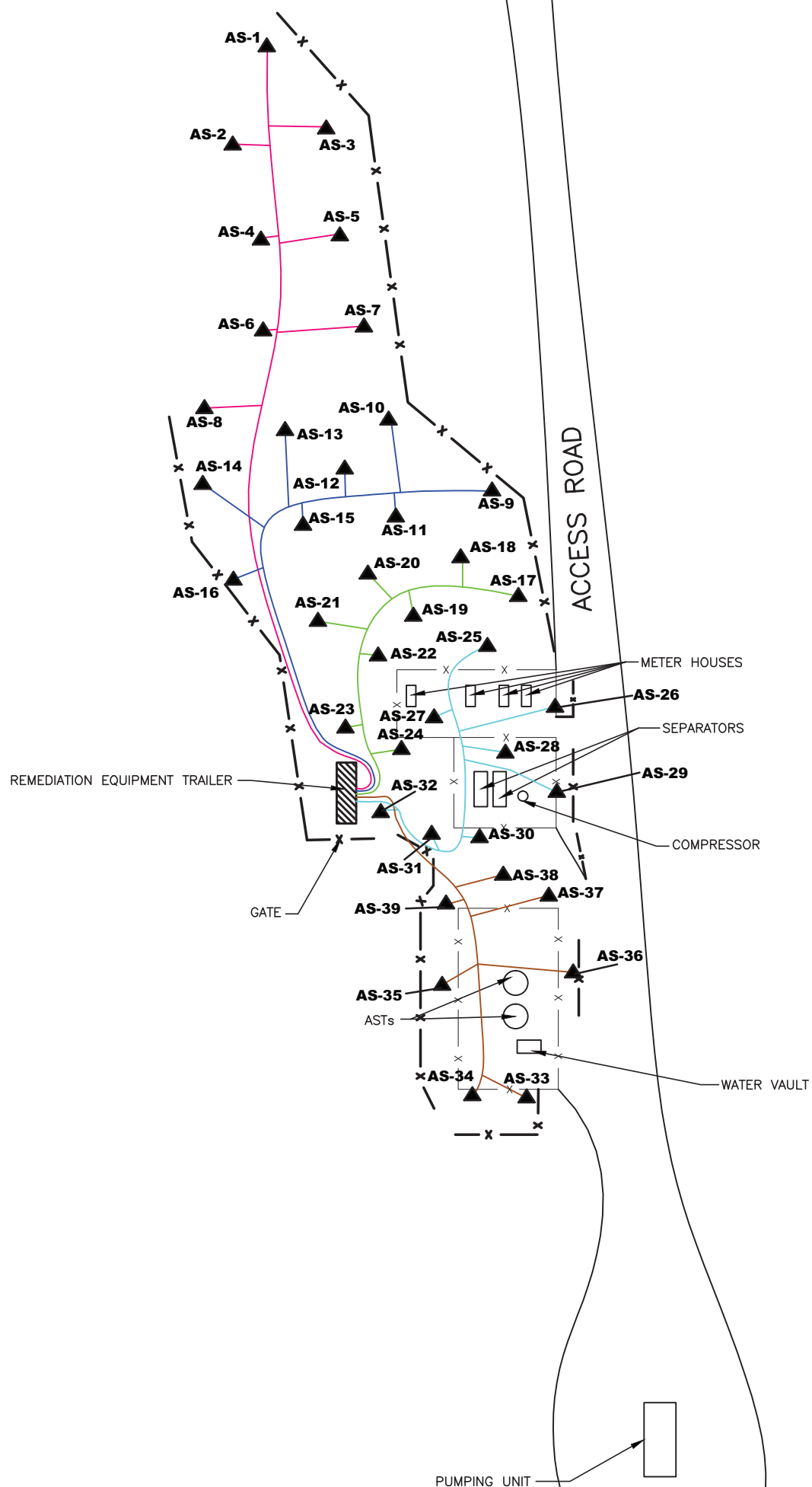
NM - not measured

ND - not detected

FIGURES



COUNTY ROAD 52

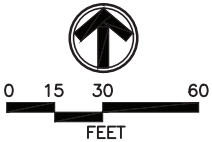


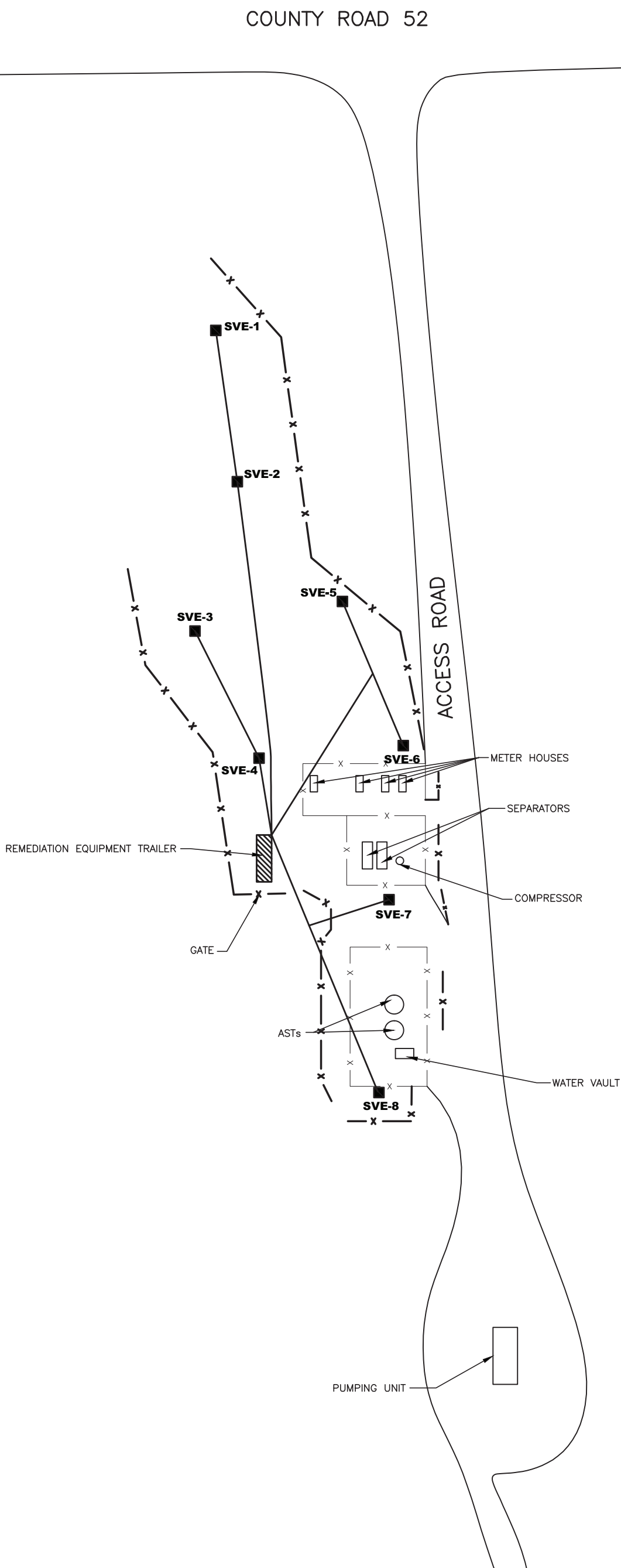
LEGEND

- x — EXISTING FENCE
- x — NEW FENCE
- AS-1 ▲ AIR SPARGING WELL LOCATION
- SYSTEM PIPING (ZONE 1)
- SYSTEM PIPING (ZONE 2)
- SYSTEM PIPING (ZONE 3)
- SYSTEM PIPING (ZONE 4)
- SYSTEM PIPING (ZONE 5)
- AST ABOVEGROUND STORAGE TANK

SOURCE:
LTE SITE SKETCH

FIGURE 2
AIR SPARGING SYSTEM LAYOUT
BECKY #2-6
WELD COUNTY, COLORADO
NOBLE ENERGY, INC.

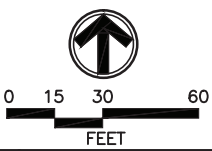




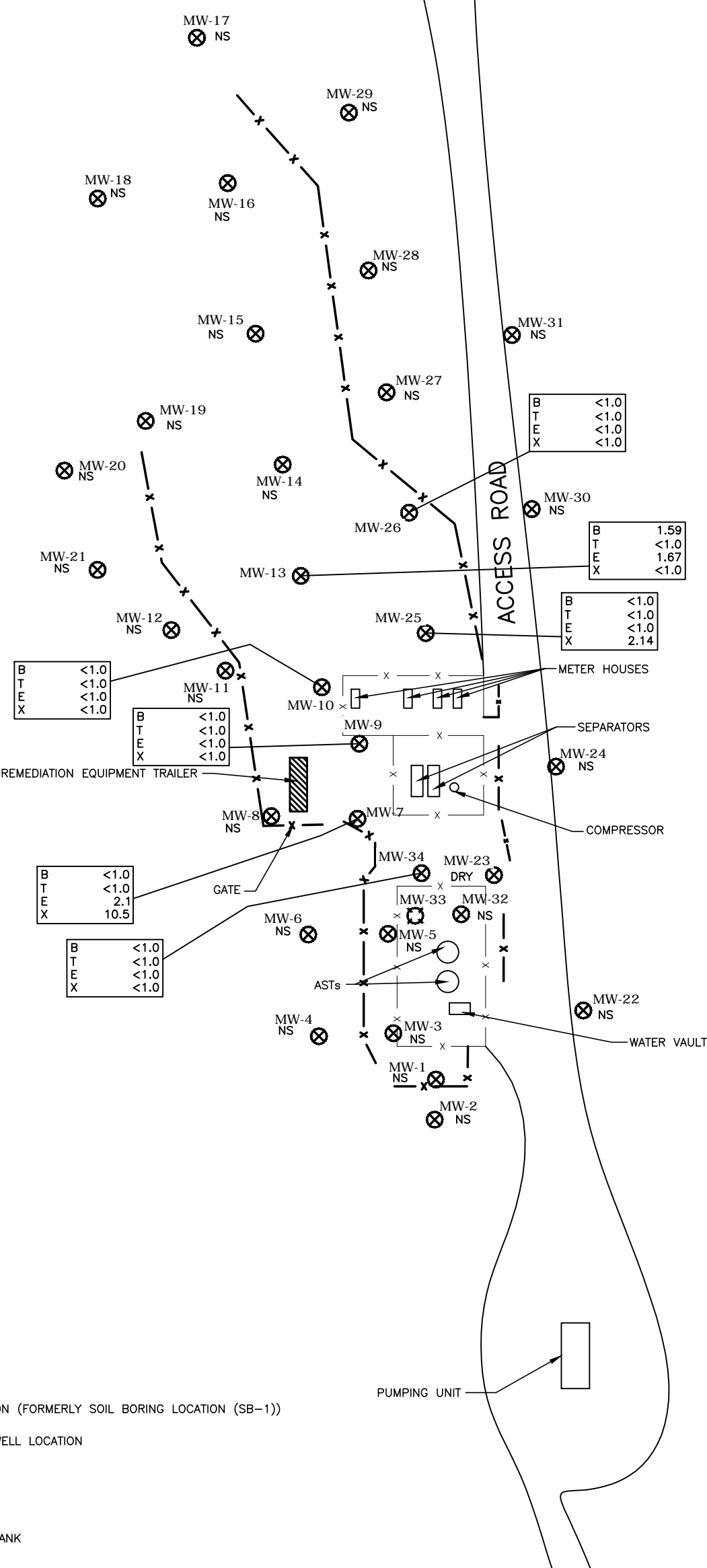
- LEGEND**
- x — EXISTING FENCE
 - x — NEW FENCE
 - SVE-1** ■ SOIL VAPOR EXTRACTION WELL LOCATION
 - SYSTEM PIPING
 - AST ABOVEGROUND STORAGE TANK

SOURCE:
LTE SITE SKETCH

FIGURE 3
SOIL VAPOR EXTRACTION SYSTEM LAYOUT
BECKY #2-6
WELD COUNTY, COLORADO
NOBLE ENERGY, INC.



COUNTY ROAD 52



LEGEND

- MW-1 MONITORING WELL LOCATION (FORMERLY SOIL BORING LOCATION (SB-1))
- MW-33 DESTROYED MONITORING WELL LOCATION
- x — EXISTING FENCE
- x — NEW FENCE
- AST ABOVEGROUND STORAGE TANK

B	BENZENE
T	TOLUENE
E	ETHYLBENZENE
X	TOTAL XYLENES

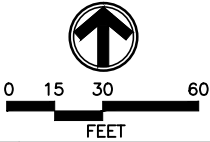
ANALYTICAL RESULTS ARE REPORTED IN µg/L

NS NOT SAMPLED

BOLD INDICATES EXCEEDANCE OF STANDARD

SOURCE:
LTE SITE SKETCH

FIGURE 4
GROUNDWATER ANALYTICAL RESULTS
DECEMBER 1, 2010
BECKY #2-6
WELD COUNTY, COLORADO
NOBLE ENERGY, INC.



ATTACHMENT 1
LABORATORY ANALYTICAL REPORT



December 06, 2010

LT Environmental, Inc.

Rob Rebel

4600 West 60th Avenue

Arvada

CO

80003

Project Name- Noble - Becky #2-6

Project Number- NEP0826.01

Attached are your analytical results for Noble - Becky #2-6 received by Origins Laboratory, Inc. December 1, 2010 4:00 pm. This project is associated with Origins project number X012011-01 .

The analytical results in the following report were analyzed under the guidelines of EPA Methods specified in SW-846. The analytical results apply specifically to the samples and analyses specified per the attached Chain of Custody.

Thank you for selecting Origins for your analytical needs. Please contact us with any questions concerning this report, or if we can help with anything at all.

Origins Laboratory, Inc.
303.433.1322
o-squad@oelabinc.com



LT Environmental, Inc.
4600 West 60th Avenue
Arvada CO 80003

Rob Rebel
Project Number: NEP0826.01
Project: Noble - Becky #2-6

CROSS REFERENCE REPORT

Sample ID	Laboratory ID	Matrix	Sampled	Date Received
MW-26	X012011-01	Water	12/1/2010 10:40:00AM	12/01/2010 16:00
MW-13	X012011-02	Water	12/1/2010 10:50:00AM	12/01/2010 16:00
MW-25	X012011-03	Water	12/1/2010 11:00:00AM	12/01/2010 16:00
MW-10	X012011-04	Water	12/1/2010 11:10:00AM	12/01/2010 16:00
MW-09	X012011-05	Water	12/1/2010 11:15:00AM	12/01/2010 16:00
MW-07	X012011-06	Water	12/1/2010 11:25:00AM	12/01/2010 16:00
MW-34	X012011-07	Water	12/1/2010 11:35:00AM	12/01/2010 16:00

Origins Laboratory, Inc.



The results in this report apply to the samples analyzed in accordance with the chain of custody document. This analytical report must be reproduced in its entirety.

Noelle E Doyle,

LT Environmental, Inc.
4600 West 60th Avenue
Arvada CO 80003

Rob Rebel
Project Number: NEP0826.01
Project: Noble - Becky #2-6

www.originslaboratory.com

page 1 of 1

12/10/11

ORIGINS
LABORATORY, INC

Client: LT Environmental
Address: On File
Telephone Number: On File
Email Address: rebel@ltenv.com

Project Manager: Rob Rebel
Project Name: Becky 2-6
Project Number: NEP0826
Samples Collected By: GC/EH

Sample ID Description	Date Sampled	Time Sampled	# of Containers	Preservative				Matrix				Analysis	Sample Instructions	
				Unpreserved	HCl	HNO ₃	Other	Groundwater	Soil	Air Summa #	Other			
MW 20	12/11/10	1040	2	X				X						1
MW 13		1050		X				X						2
MW 25		1100		X				X						3
MW 10		1110		X				X						4
MW 09		1115		X				X						5
MW 07		1125		X				X						6
MW 34		1135		X				X						7
AW 23 EH														8
														9
														10

Relinquished By: [Signature] Date: 12-1-10 Time: 1600
Relinquished By: [Signature] Date: 12-1-10 Time: 1600

Turnaround Time: Same Day ☐ 24 Hr ☐ 48 Hr ☒ 72 Hr ☐ Standard ☐

1725 Elk Place | Denver, CO 80211 | Phone: 303.433.1322 | Fax: 303.265.9645

Origins Laboratory, Inc.

[Signature]

The results in this report apply to the samples analyzed in accordance with the chain of custody document. This analytical report must be reproduced in its entirety.

Noelle E Doyle,

LT Environmental, Inc.
4600 West 60th Avenue
Arvada CO 80003

Rob Rebel
Project Number: NEP0826.01
Project: Noble - Becky #2-6

MW-26

12/1/2010 10:40:00AM

Analyte	Result	Reporting Limit	Units	Dilution	Batch	Prepared	Analyzed	Notes
---------	--------	-----------------	-------	----------	-------	----------	----------	-------

Origins Laboratory, Inc.
X012011-01 (Water)

BTEX by EPA 8260B

Benzene	ND	1.00	ug/L	1	OL01004	12/01/2010	12/01/2010	
Toluene	ND	1.00	"	"	"	"	"	
Ethylbenzene	ND	1.00	"	"	"	"	"	
Xylenes, total	ND	1.00	"	"	"	"	"	

Surrogate: 1,2-Dichloroethane-d4	107 %	73.5-130			"	"	"	
Surrogate: Toluene-d8	99.4 %	79.3-113			"	"	"	
Surrogate: 4-Bromofluorobenzene	104 %	81.5-117			"	"	"	

Origins Laboratory, Inc.



The results in this report apply to the samples analyzed in accordance with the chain of custody document. This analytical report must be reproduced in its entirety.

Noelle E Doyle,

LT Environmental, Inc.
4600 West 60th Avenue
Arvada CO 80003

Rob Rebel
Project Number: NEP0826.01
Project: Noble - Becky #2-6

MW-13

12/1/2010 10:50:00AM

Analyte	Result	Reporting Limit	Units	Dilution	Batch	Prepared	Analyzed	Notes
---------	--------	-----------------	-------	----------	-------	----------	----------	-------

Origins Laboratory, Inc.
X012011-02 (Water)

BTEX by EPA 8260B

Benzene	1.59	1.00	ug/L	1	OL01004	12/01/2010	12/01/2010	
Toluene	ND	1.00	"	"	"	"	"	
Ethylbenzene	1.67	1.00	"	"	"	"	"	
Xylenes, total	ND	1.00	"	"	"	"	"	

Surrogate: 1,2-Dichloroethane-d4	107 %	73.5-130			"	"	"	
Surrogate: Toluene-d8	101 %	79.3-113			"	"	"	
Surrogate: 4-Bromofluorobenzene	103 %	81.5-117			"	"	"	

Origins Laboratory, Inc.



The results in this report apply to the samples analyzed in accordance with the chain of custody document. This analytical report must be reproduced in its entirety.

Noelle E Doyle,

LT Environmental, Inc.
4600 West 60th Avenue
Arvada CO 80003

Rob Rebel
Project Number: NEP0826.01
Project: Noble - Becky #2-6

MW-25

12/1/2010 11:00:00AM

Analyte	Result	Reporting Limit	Units	Dilution	Batch	Prepared	Analyzed	Notes
---------	--------	-----------------	-------	----------	-------	----------	----------	-------

Origins Laboratory, Inc.
X012011-03 (Water)

BTEX by EPA 8260B

Benzene	ND	1.00	ug/L	1	OL01004	12/01/2010	12/02/2010	
Toluene	ND	1.00	"	"	"	"	"	
Ethylbenzene	ND	1.00	"	"	"	"	"	
Xylenes, total	2.14	1.00	"	"	"	"	"	

Surrogate: 1,2-Dichloroethane-d4	107 %	73.5-130	"	"	"
Surrogate: Toluene-d8	102 %	79.3-113	"	"	"
Surrogate: 4-Bromofluorobenzene	104 %	81.5-117	"	"	"

Origins Laboratory, Inc.



Noelle E Doyle,

The results in this report apply to the samples analyzed in accordance with the chain of custody document. This analytical report must be reproduced in its entirety.

LT Environmental, Inc.
4600 West 60th Avenue
Arvada CO 80003

Rob Rebel
Project Number: NEP0826.01
Project: Noble - Becky #2-6

MW-10

12/1/2010 11:10:00AM

Analyte	Result	Reporting Limit	Units	Dilution	Batch	Prepared	Analyzed	Notes
---------	--------	-----------------	-------	----------	-------	----------	----------	-------

Origins Laboratory, Inc.
X012011-04 (Water)

BTEX by EPA 8260B

Benzene	ND	1.00	ug/L	1	OL01004	12/01/2010	12/02/2010	
Toluene	ND	1.00	"	"	"	"	"	
Ethylbenzene	ND	1.00	"	"	"	"	"	
Xylenes, total	ND	1.00	"	"	"	"	"	

Surrogate: 1,2-Dichloroethane-d4	107 %	73.5-130	"	"	"	"	"	
Surrogate: Toluene-d8	100 %	79.3-113	"	"	"	"	"	
Surrogate: 4-Bromofluorobenzene	102 %	81.5-117	"	"	"	"	"	

Origins Laboratory, Inc.



Noelle E Doyle,

The results in this report apply to the samples analyzed in accordance with the chain of custody document. This analytical report must be reproduced in its entirety.

LT Environmental, Inc.
4600 West 60th Avenue
Arvada CO 80003

Rob Rebel
Project Number: NEP0826.01
Project: Noble - Becky #2-6

MW-09

12/1/2010 11:15:00AM

Analyte	Result	Reporting Limit	Units	Dilution	Batch	Prepared	Analyzed	Notes
---------	--------	-----------------	-------	----------	-------	----------	----------	-------

Origins Laboratory, Inc.
X012011-05 (Water)

BTEX by EPA 8260B

Benzene	ND	1.00	ug/L	1	OL01004	12/01/2010	12/02/2010
Toluene	ND	1.00	"	"	"	"	"
Ethylbenzene	ND	1.00	"	"	"	"	"
Xylenes, total	ND	1.00	"	"	"	"	"

Surrogate: 1,2-Dichloroethane-d4	106 %	73.5-130	"	"	"
Surrogate: Toluene-d8	101 %	79.3-113	"	"	"
Surrogate: 4-Bromofluorobenzene	102 %	81.5-117	"	"	"

Origins Laboratory, Inc.



Noelle E Doyle,

The results in this report apply to the samples analyzed in accordance with the chain of custody document. This analytical report must be reproduced in its entirety.

LT Environmental, Inc.
4600 West 60th Avenue
Arvada CO 80003

Rob Rebel
Project Number: NEP0826.01
Project: Noble - Becky #2-6

MW-07

12/1/2010 11:25:00AM

Analyte	Result	Reporting Limit	Units	Dilution	Batch	Prepared	Analyzed	Notes
---------	--------	-----------------	-------	----------	-------	----------	----------	-------

Origins Laboratory, Inc.
X012011-06 (Water)

BTEX by EPA 8260B

Benzene	ND	1.00	ug/L	1	OL01004	12/01/2010	12/02/2010
Toluene	ND	1.00	"	"	"	"	"
Ethylbenzene	2.10	1.00	"	"	"	"	"
Xylenes, total	10.5	1.00	"	"	"	"	"

Surrogate: 1,2-Dichloroethane-d4	106 %	73.5-130	"	"	"
Surrogate: Toluene-d8	101 %	79.3-113	"	"	"
Surrogate: 4-Bromofluorobenzene	101 %	81.5-117	"	"	"

Origins Laboratory, Inc.



Noelle E Doyle,

The results in this report apply to the samples analyzed in accordance with the chain of custody document. This analytical report must be reproduced in its entirety.

LT Environmental, Inc.
4600 West 60th Avenue
Arvada CO 80003

Rob Rebel
Project Number: NEP0826.01
Project: Noble - Becky #2-6

MW-34

12/1/2010 11:35:00AM

Analyte	Result	Reporting Limit	Units	Dilution	Batch	Prepared	Analyzed	Notes
---------	--------	-----------------	-------	----------	-------	----------	----------	-------

Origins Laboratory, Inc.
X012011-07 (Water)

BTEX by EPA 8260B

Benzene	ND	1.00	ug/L	1	OL01004	12/01/2010	12/02/2010
Toluene	ND	1.00	"	"	"	"	"
Ethylbenzene	ND	1.00	"	"	"	"	"
Xylenes, total	ND	1.00	"	"	"	"	"

Surrogate: 1,2-Dichloroethane-d4	107 %	73.5-130	"	"	"
Surrogate: Toluene-d8	99.1 %	79.3-113	"	"	"
Surrogate: 4-Bromofluorobenzene	102 %	81.5-117	"	"	"

Origins Laboratory, Inc.



The results in this report apply to the samples analyzed in accordance with the chain of custody document. This analytical report must be reproduced in its entirety.

Noelle E Doyle,

LT Environmental, Inc.
4600 West 60th Avenue
Arvada CO 80003

Rob Rebel
Project Number: NEP0826.01
Project: Noble - Becky #2-6

Volatile Organic Compounds by EPA Method 8260B - Quality Control Origins Laboratory, Inc.

Analyte	Result	Reporting Limit	Units	Spike Level	Source Result	%REC	%REC Limits	RPD	RPD Limit	Notes
---------	--------	-----------------	-------	-------------	---------------	------	-------------	-----	-----------	-------

Batch OLO1004 - EPA 5030B

Blank (OLO1004-BLK1)

Prepared: 12/01/2010 Analyzed: 12/02/2010

Benzene	ND	1.00	ug/L							
Toluene	ND	1.00	"							
Ethylbenzene	ND	1.00	"							
m,p-Xylene	ND	2.00	"							
o-Xylene	ND	1.00	"							
Surrogate: 1,2-Dichloroethane-d4	67.7		"	62.5		108	73.5-130			
Surrogate: Toluene-d8	62.5		"	62.5		100	79.3-113			
Surrogate: 4-Bromofluorobenzene	64.8		"	62.5		104	81.5-117			

LCS (OLO1004-BSI)

Prepared: 12/01/2010 Analyzed: 12/01/2010

Benzene	49.7	1.00	ug/L	50.0		99.5	77.3-128			
Toluene	55.0	1.00	"	50.0		110	81.7-118			
Surrogate: 1,2-Dichloroethane-d4	66.0		"	62.5		106	73.5-130			
Surrogate: Toluene-d8	63.0		"	62.5		101	79.3-113			
Surrogate: 4-Bromofluorobenzene	65.7		"	62.5		105	81.5-117			

Matrix Spike (OLO1004-MSI)

Source: X012007-01

Prepared: 12/01/2010 Analyzed: 12/01/2010

Benzene	50.8	1.00	ug/L	50.0	ND	102	74.5-132			
Toluene	55.5	1.00	"	50.0	ND	111	74.2-116			
Surrogate: 1,2-Dichloroethane-d4	65.6		"	62.5		105	73.5-130			
Surrogate: Toluene-d8	62.4		"	62.5		99.9	79.3-113			
Surrogate: 4-Bromofluorobenzene	64.4		"	62.5		103	81.5-117			

Matrix Spike Dup (OLO1004-MSD1)

Source: X012007-01

Prepared: 12/01/2010 Analyzed: 12/01/2010

Benzene	51.2	1.00	ug/L	50.0	ND	102	74.5-132	0.706	13.1	
Toluene	56.3	1.00	"	50.0	ND	113	74.2-116	1.45	21.2	
Surrogate: 1,2-Dichloroethane-d4	64.7		"	62.5		104	73.5-130			
Surrogate: Toluene-d8	63.2		"	62.5		101	79.3-113			
Surrogate: 4-Bromofluorobenzene	63.7		"	62.5		102	81.5-117			

Origins Laboratory, Inc.



The results in this report apply to the samples analyzed in accordance with the chain of custody document. This analytical report must be reproduced in its entirety.

Noelle E Doyle,

LT Environmental, Inc.
4600 West 60th Avenue
Arvada CO 80003

Rob Rebel
Project Number: NEP0826.01
Project: Noble - Becky #2-6

Notes and Definitions

ND Analyte NOT DETECTED at or above the reporting limit
RPD Relative Percent Difference

Origins Laboratory, Inc.



The results in this report apply to the samples analyzed in accordance with the chain of custody document. This analytical report must be reproduced in its entirety.

Noelle E Doyle,