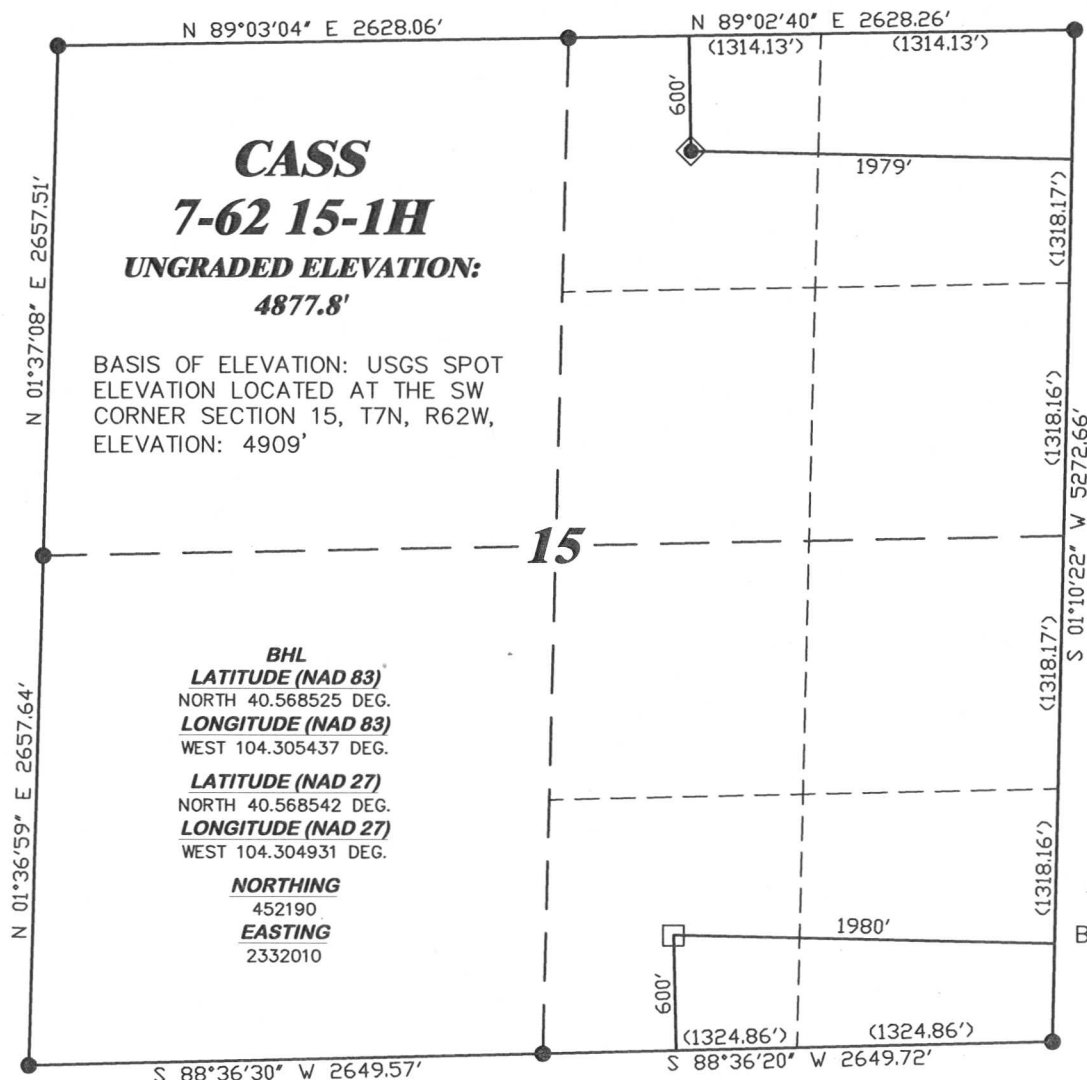


R. 62 W.



SCALE 1" = 1000'

T. 7 N.

CASS
7-62 15-1H
UNGRADED ELEVATION:
4877.8'

BASIS OF ELEVATION: USGS SPOT
ELEVATION LOCATED AT THE SW
CORNER SECTION 15, T7N, R62W,
ELEVATION: 4909'

BHL
LATITUDE (NAD 83)
NORTH 40.568525 DEG.
LONGITUDE (NAD 83)
WEST 104.305437 DEG.
LATITUDE (NAD 27)
NORTH 40.568542 DEG.
LONGITUDE (NAD 27)
WEST 104.304931 DEG.

NORTHING
452190
EASTING
2332010

LATITUDE (NAD 83)
NORTH 40.579738 DEG.
LONGITUDE (NAD 83)
WEST 104.304933 DEG.

LATITUDE (NAD 27)
NORTH 40.579755 DEG.
LONGITUDE (NAD 27)
WEST 104.304427 DEG.

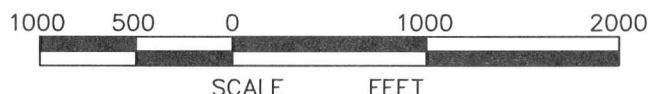
NORTHING
456276.76
EASTING
2332095.29

BASIS OF BEARING/DATUM
SPCS CO NORTH NAD 27
BASED ON NGS TRIANGULATION
STATION "PIEDRA"

NOTES

PRAIRIE LANDS
EXISTING TWO-TRACK WITHIN
400' RADIUS OF WELL SITE.

GPS OPERATOR PAUL ORME
OBSERVED A PDOP OF 2.4.
ALL GPS OBSERVATIONS ARE IN
COMPLIANCE WITH COGCC RULE No.215.

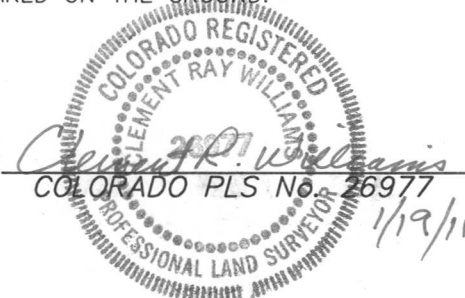


SURVEYOR'S STATEMENT

I, CLEMENT R. WILLIAMS, OF ROCK SPRINGS, WYOMING, HEREBY STATE: THIS MAP WAS MADE FROM NOTES TAKEN DURING AN ACTUAL FIELD SURVEY DONE UNDER MY DIRECT SUPERVISION ON JANUARY 14, 2011 AND THAT THIS PLAT CORRECTLY SHOWS THE LOCATION OF CASS 7-62 15-1H AS STAKED ON THE GROUND.

LEGEND

- ◆ WELL LOCATION
- BOTTOM HOLE LOC. (APPROX)
- FOUND MONUMENT
- ▲ PREVIOUSLY FOUND MONUMENT



RIFFIN & ASSOCIATES, INC.
1414 ELK ST., ROCK SPRINGS, WY 82901

(307) 362-5028

DRAWN: 1/17/11 - MMM

REVISED: NA

SCALE: 1" = 1000'

DRG JOB No. 18303

EXHIBIT 1

PLAT OF DRILLING LOCATION
FOR
CHESAPEAKE ENERGY, LLC.

600' F/NL & 1979' F/EL, NWNE, SECTION 15,
T. 7 N., R. 62 W., 6th P.M.
WELD COUNTY, COLORADO