

Chesapeake Energy -Rockies District

Weld

Wagner 11-65 11-1H

Wagner 11-65 11-1H

Wagner 11-65 11-1H

Plan: Design #1

Standard Planning Report

25 January, 2011

Chesapeake Operating

Planning Report

Database:	Drilling Database	Local Co-ordinate Reference:	Site Wagner 11-65 11-1H
Company:	Chesapeake Energy -Rockies District	TVD Reference:	WELL @ 0.0usft (Original Well Elev)
Project:	Weld	MD Reference:	WELL @ 0.0usft (Original Well Elev)
Site:	Wagner 11-65 11-1H	North Reference:	Grid
Well:	Wagner 11-65 11-1H	Survey Calculation Method:	Minimum Curvature
Wellbore:	Wagner 11-65 11-1H		
Design:	Design #1		

Project	Weld		
Map System:	US State Plane 1927 (Exact solution)	System Datum:	Mean Sea Level
Geo Datum:	NAD 1927 (NADCON CONUS)		
Map Zone:	Colorado North 501		

Site		Wagner 11-65 11-1H			
Site Position:		Northing:	582,687.38 ft	Latitude:	40° 55' 46.68369199 N
From:	Map	Easting:	2,240,267.67 ft	Longitude:	104° 37' 49.95792113 W
Position Uncertainty:	0.0 usft	Slot Radius:	13.200 in	Grid Convergence:	0.56 °

Well	Wagner 11-65 11-1H					
Well Position	+N/-S	0.0 usft	Northing:	582,687.38 ft	Latitude:	40° 55' 46.68369199 N
	+E/-W	0.0 usft	Easting:	2,240,267.67 ft	Longitude:	104° 37' 49.95792113 W
Position Uncertainty	0.0 usft	Wellhead Elevation:		Ground Level:		0.0 usft

Wellbore	Wagner 11-65 11-1H				
Magnetics	Model Name	Sample Date	Declination (°)	Dip Angle (°)	Field Strength (nT)
	IGRF200510	1/25/2011	8.85	67.52	53,523

Design	Design #1			
Audit Notes:				
Version:	Phase:	PROTOTYPE	Tie On Depth:	0.0
Vertical Section:	Depth From (TVD) (usft)	+N/-S (usft)	+E/-W (usft)	Direction (°)
	0.0	0.0	0.0	358.01

Plan Sections										
Measured Depth (usft)	Inclination (°)	Azimuth (°)	Vertical Depth (usft)	+N/-S (usft)	+E/-W (usft)	Dogleg Rate (°/100usft)	Build Rate (°/100usft)	Turn Rate (°/100usft)	TFO (°)	Target
0.0	0.00	0.00	0.0	0.0	0.0	0.00	0.00	0.00	0.00	

Chesapeake Operating

Planning Report

Database:	Drilling Database	Local Co-ordinate Reference:	Site Wagner 11-65 11-1H
Company:	Chesapeake Energy -Rockies District	TVD Reference:	WELL @ 0.0usft (Original Well Elev)
Project:	Weld	MD Reference:	WELL @ 0.0usft (Original Well Elev)
Site:	Wagner 11-65 11-1H	North Reference:	Grid
Well:	Wagner 11-65 11-1H	Survey Calculation Method:	Minimum Curvature
Wellbore:	Wagner 11-65 11-1H		
Design:	Design #1		

Planned Survey									
Measured Depth (usft)	Inclination (°)	Azimuth (°)	Vertical Depth (usft)	+N/-S (usft)	+E/-W (usft)	Vertical Section (usft)	Dogleg Rate (°/100usft)	Build Rate (°/100usft)	Turn Rate (°/100usft)
0.0	0.00	0.00	0.0	0.0	0.0	0.0	0.00	0.00	0.00
100.0	0.00	0.00	100.0	0.0	0.0	0.0	0.00	0.00	0.00
200.0	0.00	0.00	200.0	0.0	0.0	0.0	0.00	0.00	0.00
300.0	0.00	0.00	300.0	0.0	0.0	0.0	0.00	0.00	0.00
400.0	0.00	0.00	400.0	0.0	0.0	0.0	0.00	0.00	0.00
500.0	0.00	0.00	500.0	0.0	0.0	0.0	0.00	0.00	0.00
600.0	0.00	0.00	600.0	0.0	0.0	0.0	0.00	0.00	0.00
700.0	0.00	0.00	700.0	0.0	0.0	0.0	0.00	0.00	0.00
800.0	0.00	0.00	800.0	0.0	0.0	0.0	0.00	0.00	0.00
900.0	0.00	0.00	900.0	0.0	0.0	0.0	0.00	0.00	0.00
1,000.0	0.00	0.00	1,000.0	0.0	0.0	0.0	0.00	0.00	0.00
1,100.0	0.00	0.00	1,100.0	0.0	0.0	0.0	0.00	0.00	0.00
1,200.0	0.00	0.00	1,200.0	0.0	0.0	0.0	0.00	0.00	0.00
1,300.0	0.00	0.00	1,300.0	0.0	0.0	0.0	0.00	0.00	0.00
1,400.0	0.00	0.00	1,400.0	0.0	0.0	0.0	0.00	0.00	0.00
1,500.0	0.00	0.00	1,500.0	0.0	0.0	0.0	0.00	0.00	0.00
1,600.0	0.00	0.00	1,600.0	0.0	0.0	0.0	0.00	0.00	0.00
1,700.0	0.00	0.00	1,700.0	0.0	0.0	0.0	0.00	0.00	0.00
1,800.0	0.00	0.00	1,800.0	0.0	0.0	0.0	0.00	0.00	0.00
1,900.0	0.00	0.00	1,900.0	0.0	0.0	0.0	0.00	0.00	0.00
2,000.0	0.00	0.00	2,000.0	0.0	0.0	0.0	0.00	0.00	0.00
2,100.0	0.00	0.00	2,100.0	0.0	0.0	0.0	0.00	0.00	0.00
2,200.0	0.00	0.00	2,200.0	0.0	0.0	0.0	0.00	0.00	0.00
2,300.0	0.00	0.00	2,300.0	0.0	0.0	0.0	0.00	0.00	0.00
2,400.0	0.00	0.00	2,400.0	0.0	0.0	0.0	0.00	0.00	0.00
2,500.0	0.00	0.00	2,500.0	0.0	0.0	0.0	0.00	0.00	0.00
2,600.0	0.00	0.00	2,600.0	0.0	0.0	0.0	0.00	0.00	0.00
2,700.0	0.00	0.00	2,700.0	0.0	0.0	0.0	0.00	0.00	0.00
2,800.0	0.00	0.00	2,800.0	0.0	0.0	0.0	0.00	0.00	0.00
2,900.0	0.00	0.00	2,900.0	0.0	0.0	0.0	0.00	0.00	0.00
3,000.0	0.00	0.00	3,000.0	0.0	0.0	0.0	0.00	0.00	0.00
3,100.0	0.00	0.00	3,100.0	0.0	0.0	0.0	0.00	0.00	0.00
3,200.0	0.00	0.00	3,200.0	0.0	0.0	0.0	0.00	0.00	0.00
3,300.0	0.00	0.00	3,300.0	0.0	0.0	0.0	0.00	0.00	0.00
3,400.0	0.00	0.00	3,400.0	0.0	0.0	0.0	0.00	0.00	0.00
3,500.0	0.00	0.00	3,500.0	0.0	0.0	0.0	0.00	0.00	0.00
3,600.0	0.00	0.00	3,600.0	0.0	0.0	0.0	0.00	0.00	0.00
3,700.0	0.00	0.00	3,700.0	0.0	0.0	0.0	0.00	0.00	0.00
3,800.0	0.00	0.00	3,800.0	0.0	0.0	0.0	0.00	0.00	0.00
3,900.0	0.00	0.00	3,900.0	0.0	0.0	0.0	0.00	0.00	0.00
4,000.0	0.00	0.00	4,000.0	0.0	0.0	0.0	0.00	0.00	0.00
4,100.0	0.00	0.00	4,100.0	0.0	0.0	0.0	0.00	0.00	0.00
4,200.0	0.00	0.00	4,200.0	0.0	0.0	0.0	0.00	0.00	0.00
4,300.0	0.00	0.00	4,300.0	0.0	0.0	0.0	0.00	0.00	0.00
4,400.0	0.00	0.00	4,400.0	0.0	0.0	0.0	0.00	0.00	0.00
4,500.0	0.00	0.00	4,500.0	0.0	0.0	0.0	0.00	0.00	0.00
4,600.0	0.00	0.00	4,600.0	0.0	0.0	0.0	0.00	0.00	0.00
4,700.0	0.00	0.00	4,700.0	0.0	0.0	0.0	0.00	0.00	0.00
4,800.0	0.00	0.00	4,800.0	0.0	0.0	0.0	0.00	0.00	0.00
4,900.0	0.00	0.00	4,900.0	0.0	0.0	0.0	0.00	0.00	0.00
5,000.0	0.00	0.00	5,000.0	0.0	0.0	0.0	0.00	0.00	0.00
5,100.0	0.00	0.00	5,100.0	0.0	0.0	0.0	0.00	0.00	0.00
5,200.0	0.00	0.00	5,200.0	0.0	0.0	0.0	0.00	0.00	0.00
5,300.0	0.00	0.00	5,300.0	0.0	0.0	0.0	0.00	0.00	0.00

Chesapeake Operating

Planning Report

Database:	Drilling Database	Local Co-ordinate Reference:	Site Wagner 11-65 11-1H
Company:	Chesapeake Energy -Rockies District	TVD Reference:	WELL @ 0.0usft (Original Well Elev)
Project:	Weld	MD Reference:	WELL @ 0.0usft (Original Well Elev)
Site:	Wagner 11-65 11-1H	North Reference:	Grid
Well:	Wagner 11-65 11-1H	Survey Calculation Method:	Minimum Curvature
Wellbore:	Wagner 11-65 11-1H		
Design:	Design #1		

Planned Survey									
Measured Depth (usft)	Inclination (°)	Azimuth (°)	Vertical Depth (usft)	+N/-S (usft)	+E/-W (usft)	Vertical Section (usft)	Dogleg Rate (°/100usft)	Build Rate (°/100usft)	Turn Rate (°/100usft)
5,400.0	0.00	0.00	5,400.0	0.0	0.0	0.0	0.00	0.00	0.00
5,500.0	0.00	0.00	5,500.0	0.0	0.0	0.0	0.00	0.00	0.00
5,600.0	0.00	0.00	5,600.0	0.0	0.0	0.0	0.00	0.00	0.00
5,700.0	0.00	0.00	5,700.0	0.0	0.0	0.0	0.00	0.00	0.00
5,800.0	0.00	0.00	5,800.0	0.0	0.0	0.0	0.00	0.00	0.00
5,900.0	0.00	0.00	5,900.0	0.0	0.0	0.0	0.00	0.00	0.00
6,000.0	0.00	0.00	6,000.0	0.0	0.0	0.0	0.00	0.00	0.00
6,100.0	0.00	0.00	6,100.0	0.0	0.0	0.0	0.00	0.00	0.00
6,200.0	0.00	0.00	6,200.0	0.0	0.0	0.0	0.00	0.00	0.00
6,300.0	0.00	0.00	6,300.0	0.0	0.0	0.0	0.00	0.00	0.00
6,400.0	0.00	0.00	6,400.0	0.0	0.0	0.0	0.00	0.00	0.00
6,500.0	0.00	0.00	6,500.0	0.0	0.0	0.0	0.00	0.00	0.00
6,600.0	0.00	0.00	6,600.0	0.0	0.0	0.0	0.00	0.00	0.00
6,700.0	0.00	0.00	6,700.0	0.0	0.0	0.0	0.00	0.00	0.00
6,800.0	0.00	0.00	6,800.0	0.0	0.0	0.0	0.00	0.00	0.00
6,900.0	0.00	0.00	6,900.0	0.0	0.0	0.0	0.00	0.00	0.00
7,000.0	0.00	0.00	7,000.0	0.0	0.0	0.0	0.00	0.00	0.00
7,100.0	0.00	0.00	7,100.0	0.0	0.0	0.0	0.00	0.00	0.00
7,200.0	0.00	0.00	7,200.0	0.0	0.0	0.0	0.00	0.00	0.00
7,300.0	0.00	0.00	7,300.0	0.0	0.0	0.0	0.00	0.00	0.00
7,400.0	0.00	0.00	7,400.0	0.0	0.0	0.0	0.00	0.00	0.00
7,500.0	0.00	0.00	7,500.0	0.0	0.0	0.0	0.00	0.00	0.00
7,537.0	0.00	0.00	7,537.0	0.0	0.0	0.0	0.00	0.00	0.00
7,600.0	6.30	358.01	7,599.9	3.5	-0.1	3.5	10.00	10.00	0.00
7,700.0	16.30	358.01	7,697.8	23.0	-0.8	23.0	10.00	10.00	0.00
7,800.0	26.30	358.01	7,790.8	59.3	-2.1	59.3	10.00	10.00	0.00
7,900.0	36.30	358.01	7,876.2	111.1	-3.9	111.2	10.00	10.00	0.00
8,000.0	46.30	358.01	7,951.2	177.0	-6.1	177.1	10.00	10.00	0.00
8,100.0	56.30	358.01	8,013.6	254.9	-8.9	255.1	10.00	10.00	0.00
8,200.0	66.30	358.01	8,061.6	342.5	-11.9	342.7	10.00	10.00	0.00
8,300.0	76.30	358.01	8,093.6	437.0	-15.2	437.3	10.00	10.00	0.00
8,400.0	86.30	358.01	8,108.7	535.7	-18.6	536.0	10.00	10.00	0.00
8,440.0	90.30	358.01	8,109.9	575.6	-20.0	576.0	10.00	10.00	0.00
8,500.0	90.30	358.01	8,109.6	635.6	-22.1	636.0	0.00	0.00	0.00
8,600.0	90.30	358.01	8,109.1	735.5	-25.5	736.0	0.00	0.00	0.00
8,700.0	90.30	358.01	8,108.5	835.5	-29.0	836.0	0.00	0.00	0.00
8,800.0	90.30	358.01	8,108.0	935.4	-32.5	936.0	0.00	0.00	0.00
8,900.0	90.30	358.01	8,107.5	1,035.4	-36.0	1,036.0	0.00	0.00	0.00
9,000.0	90.30	358.01	8,107.0	1,135.3	-39.4	1,136.0	0.00	0.00	0.00
9,100.0	90.30	358.01	8,106.5	1,235.2	-42.9	1,236.0	0.00	0.00	0.00
9,200.0	90.30	358.01	8,105.9	1,335.2	-46.4	1,336.0	0.00	0.00	0.00
9,300.0	90.30	358.01	8,105.4	1,435.1	-49.8	1,436.0	0.00	0.00	0.00
9,400.0	90.30	358.01	8,104.9	1,535.0	-53.3	1,536.0	0.00	0.00	0.00
9,500.0	90.30	358.01	8,104.4	1,635.0	-56.8	1,636.0	0.00	0.00	0.00
9,600.0	90.30	358.01	8,103.8	1,734.9	-60.2	1,736.0	0.00	0.00	0.00
9,700.0	90.30	358.01	8,103.3	1,834.9	-63.7	1,836.0	0.00	0.00	0.00
9,800.0	90.30	358.01	8,102.8	1,934.8	-67.2	1,936.0	0.00	0.00	0.00
9,900.0	90.30	358.01	8,102.3	2,034.7	-70.7	2,036.0	0.00	0.00	0.00
10,000.0	90.30	358.01	8,101.7	2,134.7	-74.1	2,136.0	0.00	0.00	0.00
10,100.0	90.30	358.01	8,101.2	2,234.6	-77.6	2,236.0	0.00	0.00	0.00
10,200.0	90.30	358.01	8,100.7	2,334.5	-81.1	2,336.0	0.00	0.00	0.00
10,300.0	90.30	358.01	8,100.2	2,434.5	-84.5	2,436.0	0.00	0.00	0.00
10,400.0	90.30	358.01	8,099.6	2,534.4	-88.0	2,536.0	0.00	0.00	0.00
10,500.0	90.30	358.01	8,099.1	2,634.4	-91.5	2,636.0	0.00	0.00	0.00

Chesapeake Operating

Planning Report

Database:	Drilling Database	Local Co-ordinate Reference:	Site Wagner 11-65 11-1H
Company:	Chesapeake Energy -Rockies District	TVD Reference:	WELL @ 0.0usft (Original Well Elev)
Project:	Weld	MD Reference:	WELL @ 0.0usft (Original Well Elev)
Site:	Wagner 11-65 11-1H	North Reference:	Grid
Well:	Wagner 11-65 11-1H	Survey Calculation Method:	Minimum Curvature
Wellbore:	Wagner 11-65 11-1H		
Design:	Design #1		

Planned Survey

Measured Depth (usft)	Inclination (°)	Azimuth (°)	Vertical Depth (usft)	+N/-S (usft)	+E/-W (usft)	Vertical Section (usft)	Dogleg Rate (°/100usft)	Build Rate (°/100usft)	Turn Rate (°/100usft)
10,600.0	90.30	358.01	8,098.6	2,734.3	-94.9	2,735.9	0.00	0.00	0.00
10,700.0	90.30	358.01	8,098.1	2,834.2	-98.4	2,835.9	0.00	0.00	0.00
10,800.0	90.30	358.01	8,097.6	2,934.2	-101.9	2,935.9	0.00	0.00	0.00
10,900.0	90.30	358.01	8,097.0	3,034.1	-105.4	3,035.9	0.00	0.00	0.00
11,000.0	90.30	358.01	8,096.5	3,134.1	-108.8	3,135.9	0.00	0.00	0.00
11,100.0	90.30	358.01	8,096.0	3,234.0	-112.3	3,235.9	0.00	0.00	0.00
11,200.0	90.30	358.01	8,095.5	3,333.9	-115.8	3,335.9	0.00	0.00	0.00
11,300.0	90.30	358.01	8,094.9	3,433.9	-119.2	3,435.9	0.00	0.00	0.00
11,400.0	90.30	358.01	8,094.4	3,533.8	-122.7	3,535.9	0.00	0.00	0.00
11,500.0	90.30	358.01	8,093.9	3,633.7	-126.2	3,635.9	0.00	0.00	0.00
11,600.0	90.30	358.01	8,093.4	3,733.7	-129.6	3,735.9	0.00	0.00	0.00
11,700.0	90.30	358.01	8,092.8	3,833.6	-133.1	3,835.9	0.00	0.00	0.00
11,800.0	90.30	358.01	8,092.3	3,933.6	-136.6	3,935.9	0.00	0.00	0.00
11,860.1	90.30	358.01	8,092.0	3,993.6	-138.7	3,996.0	0.00	0.00	0.00

Design Targets

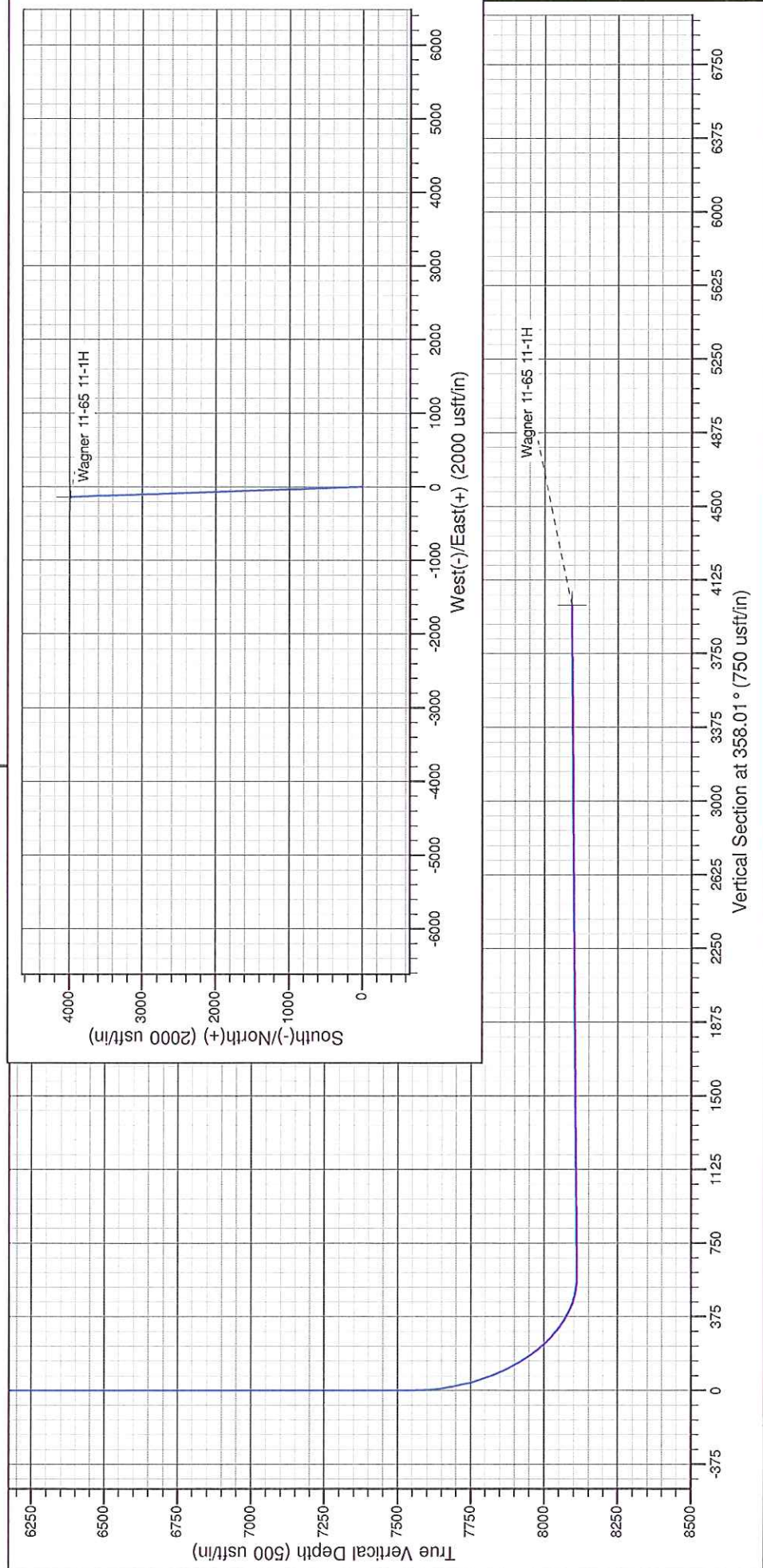
Target Name	Dip Angle (°)	Dip Dir. (°)	TVD (usft)	+N/-S (usft)	+E/-W (usft)	Northing (ft)	Easting (ft)	Latitude	Longitude
- hit/miss target									
- Shape									
Wagner 11-65 11-1H	0.00	0.00	8,092.0	3,993.6	-138.7	586,681.00	2,240,129.00	0° 56' 26.15457949 N	4° 37' 51.25443621 W
- plan hits target center									
- Point									

Project: Weld
Site: Wagner 11-65 11-1H
Well: Wagner 11-65 11-1H
Wellbore: Wagner 11-65 11-1H
Design: Design #1

PROJECT DETAILS: Weld

Geodetic System: US State Plane 1927 (Exact solution)
Datum: NAD 1927 (NADCON CONUS)
Ellipsoid: Clarke 1866
Zone: Colorado North 501

System Datum: Mean Sea Level



SECTION DETAILS

Sec	MD	Inc	Azi	TVD	+N/-S	+E/-W	Dleg	TFace	VSect	Target
1	0.0	0.00	0.00	0.0	0.0	0.0	0.00	0.00	0.0	
2	7537.0	0.00	0.00	7537.0	0.0	0.0	0.00	0.00	0.0	
3	8440.0	90.30	358.01	8109.9	575.6	-20.0	10.00	358.01	576.0	Wagner 11-65 11-1H
411860.1	90.30	358.01	8092.0	3993.6	-138.7	0.00	0.00	3996.0		