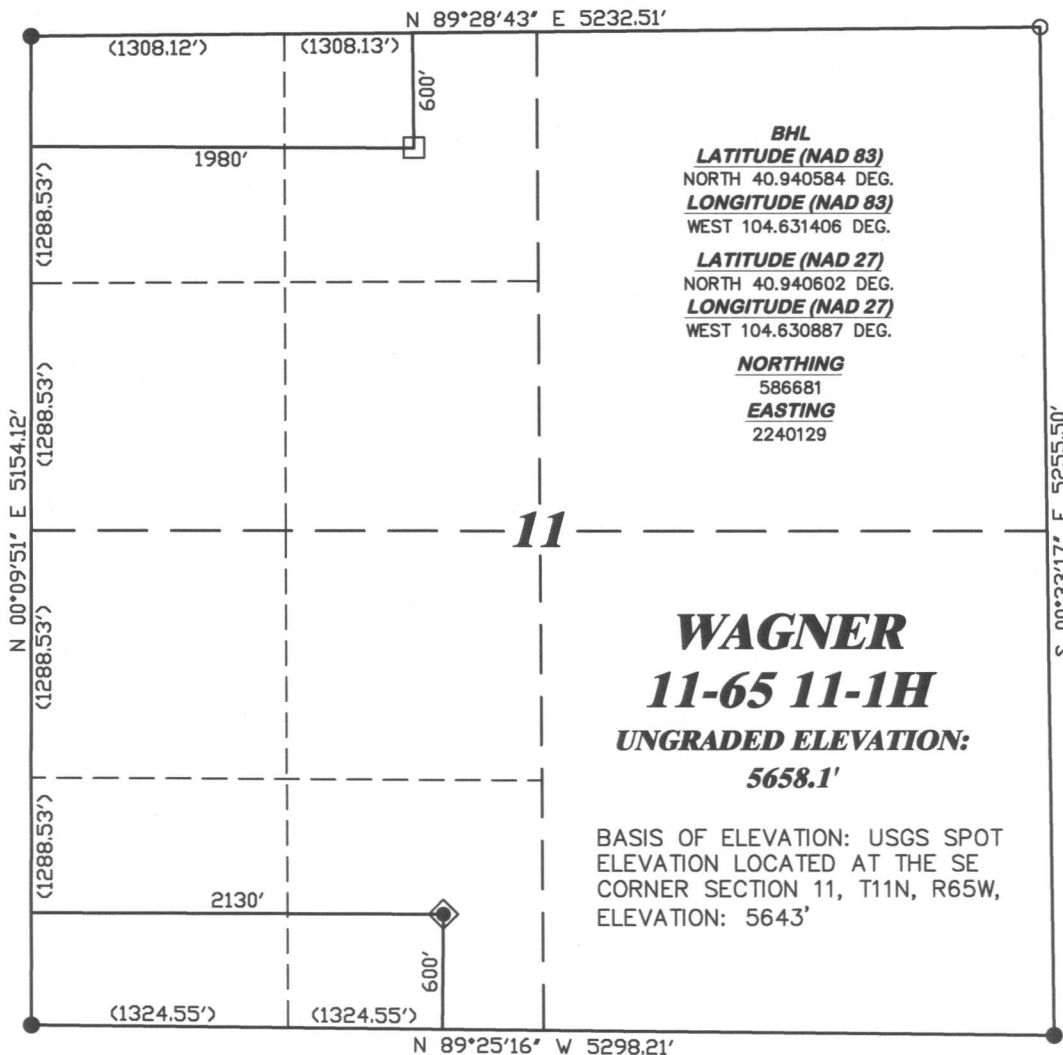


R. 65 W.



SCALE 1" = 1000'

T. 11 N.

BHL
LATITUDE (NAD 83)
NORTH 40.940584 DEG.
LONGITUDE (NAD 83)
WEST 104.631406 DEG.

LATITUDE (NAD 27)
NORTH 40.940602 DEG.
LONGITUDE (NAD 27)
WEST 104.630887 DEG.

NORTHING
586681
EASTING
2240129

LATITUDE (NAD 83)
NORTH 40.929619 DEG.
LONGITUDE (NAD 83)
WEST 104.631047 DEG.

LATITUDE (NAD 27)
NORTH 40.929637 DEG.
LONGITUDE (NAD 27)
WEST 104.630528 DEG.

NORTHING
582687.38
EASTING
2240267.67

WAGNER
11-65 11-1H
UNGRADED ELEVATION:
5658.1'

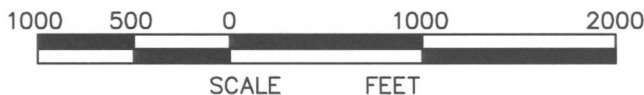
BASIS OF ELEVATION: USGS SPOT
ELEVATION LOCATED AT THE SE
CORNER SECTION 11, T11N, R65W,
ELEVATION: 5643'

BASIS OF BEARING/DATUM
SPCS CO NORTH NAD 27
BASED ON DRG TRIANGULATION
STATION "10 11 65"

NOTES

PRAIRIE LANDS
EXISTING PIPELINE WITHIN
400' RADIUS OF WELL SITE.

GPS OPERATOR PAUL ORME
OBSERVED A PDOP OF 1.7.
ALL GPS OBSERVATIONS ARE IN
COMPLIANCE WITH COGCC RULE No.215.



SURVEYOR'S STATEMENT

I, CLEMENT R. WILLIAMS, OF ROCK SPRINGS, WYOMING, HEREBY STATE: THIS MAP WAS MADE FROM NOTES TAKEN DURING AN ACTUAL FIELD SURVEY DONE UNDER MY DIRECT SUPERVISION ON DECEMBER 27, 2010 AND THAT THIS PLAT CORRECTLY SHOWS THE LOCATION OF WAGNER 11-65 11-1H AS STAKED ON THE GROUND.

LEGEND

- ◆ WELL LOCATION
- BOTTOM HOLE LOC. (APPROX)
- FOUND MONUMENT
- ▲ PREVIOUSLY FOUND MONUMENT
- CALCULATED CORNER



RIFFIN & ASSOCIATES, INC.
1414 ELK ST., ROCK SPRINGS, WY 82901

DRAWN: 12/30/10 - MMM

SCALE: 1" = 1000'

REVISED: NA

DRG JOB No. 18245

EXHIBIT 1

PLAT OF DRILLING LOCATION
FOR
CHESAPEAKE ENERGY, LLC.

600' F/SL & 2130' F/WL, SESW, SECTION 11,
T. 11 N., R. 65 W., 6th P.M.
WELD COUNTY, COLORADO