

DIXON FEDERAL B14
Well Location Plat
Section 15, Township 6 South,
Range 92 West

Northwest Corner Sec.15
Stone Monument 17" WC

North 1/4 Corner Sec.15
Aluminum Cap L.S. No. 24303

Northeast Corner Sec. 15
Garfield County Brass Cap



Graphic Scale in Feet
1"=1000'

Legend

- ◆ - Field Surveyed Section Corner
- ◆ - Field Surveyed Quarter Corner
- ⊙ - Calculated Section Corner Location
- ◆ - Field Surveyed 1/6 Corner

Bottom Hole: Dixon B14

1480' FSL

1958' FWL

NAD83

Lat: 39.523861561°N

Long: 107.655522273°W

NAD27

Lat: 39.523881001°N

Long: 107.654907500°W

Surface: Dixon B14

1583' FSL

752' FWL

Gnd El= 5513.0

Pad El= 5520.0

NAD83

Lat: 39.524123346°N

Long: 107.659798552°W

NAD27

Lat: 39.524142789°N

Long: 107.659183619°W

UTM 13 NORTH

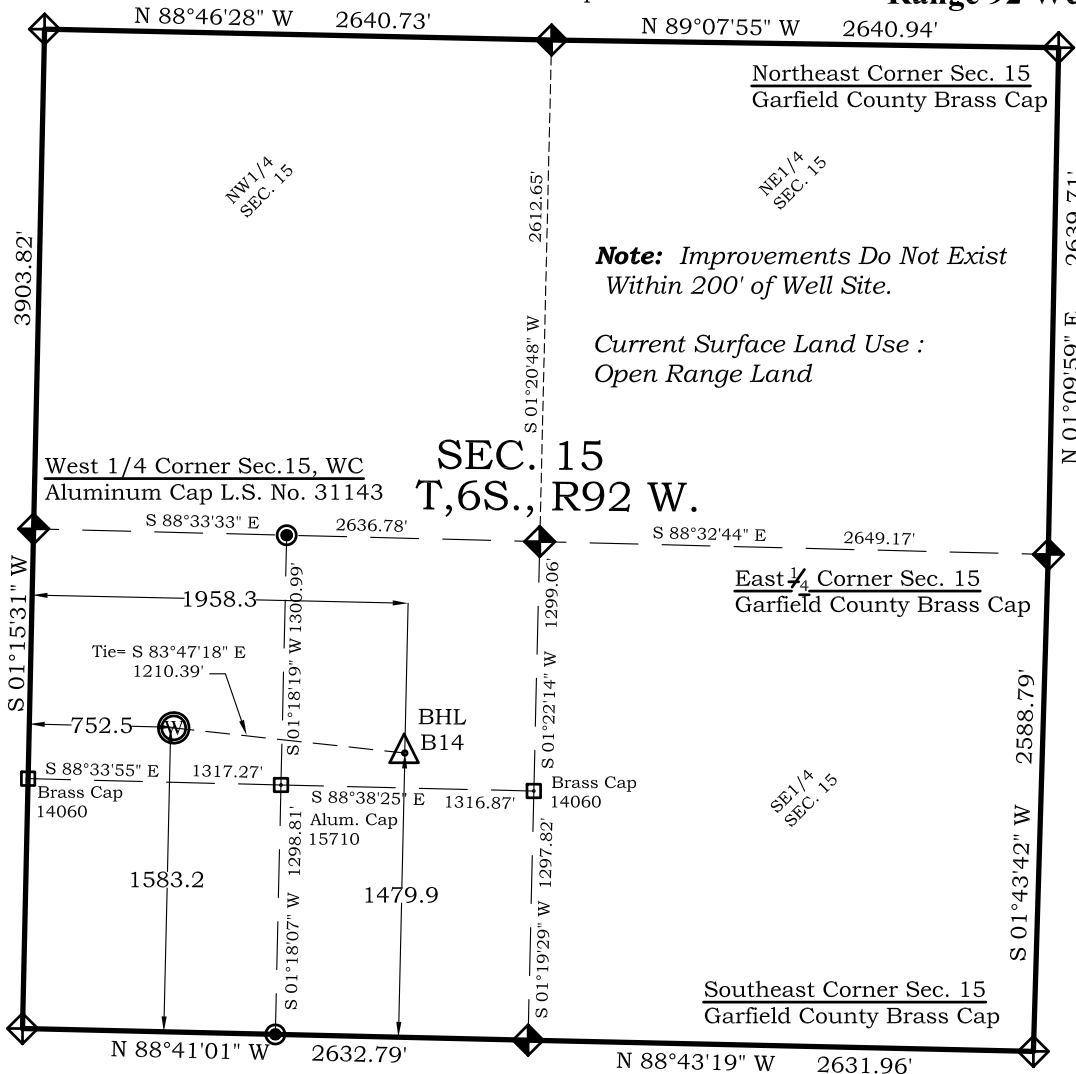
NAD 1983

NORTHING

14364538.917

EASTING

890340.884



Note: Improvements Do Not Exist
Within 200' of Well Site.

Current Surface Land Use :
Open Range Land

SEC. 15
T.6S., R92 W.

Southwest Corner Sec.15
Aluminum Cap L.S. No. 19598

South 1/4 Corner Sec.15
Brass Cap L.S. No. 14060

Prepared For Antero Resources:
Proposed Dixon Federal B14 Well Situate in The SW1/4
Section 15, Township 6 South, Range 92 West of the 6th.
Principal Meridian, County of Garfield, State of
Colorado.

SURVEYOR'S CERTIFICATE

I, SCOTT E. AIBNER, A REGISTERED LAND SURVEYOR, LICENSED UNDER THE LAWS OF THE STATE OF COLORADO DO HEREBY CERTIFY THAT THE SURVEY SHOWN HEREON WAS PREPARED BY RIVER VALLEY SURVEY, INC., FOR ANTERO RESOURCES, BY ME OR UNDER MY DIRECT SUPERVISION AND HAS BEEN STAKED ON THE GROUND AS SHOWN ON THE PLAT AND THAT THIS PLAT IS A TRUE REPRESENTATION THEREOF.

BY: 
SCOTT E. AIBNER, COLORADO REG. NO. 31143

Notes:

1. LATITUDE AND LONGITUDE COORDINATES ARE DIFFERENTIALLY CORRECTED AND BASED ON PUBLISHED NGS CONTROL STATION "WDP-5". SYSTEM: UTM ZONE: 13 NORTH DATUM: NAD 1983 (CONUS)
2. ELEVATIONS ARE BASED ON NAVD OF 1983.
3. ALL BOTTOM AND TOP HOLE LOCATIONS ARE MEASURED 90 DEGREES FROM SECTION LINE.
4. USGS QUADRANGLE MAP "GIBSON GULCH".
5. CURRENT SURFACE LAND USE: OPEN RANGE LAND.
6. PDOP AT THE TIME OF LOCATION OF SURFACE WELL = 2.5



River Valley Survey, Inc.
110 East 3rd. Street, Suite 213
Rifle, Colorado 81650
Ph: 970-379-7846

Project: DIXON B PAD

Field Date: 01-04-11

Date: 01-07-11

Scale: 1"= 1000'

Sheet: 1 of 11

Well Location Plat
Prepared For Antero Resources

Situate In:
SW1/4 Section 15, T6S., R. 92 W. of the
6th P.M., Garfield County, Colorado

