

ENCANA OIL & GAS (USA) INC. - EBUS  
DO NOT MAIL-3601 N STAGECOACH RD  
LONGMONT, Colorado

Ione  
Ione 6-4-4

**Ensign/122**

## **Post Job Summary**

### **Cement Surface Casing**

Prepared for:  
Date Prepared: 8/19/2010  
Version: 1

Service Supervisor: SALINAS, JOSE

Submitted by: Mark Sauter

**HALLIBURTON**

## The Road to Excellence Starts with Safety

Sold To #: 340078	Ship To #: 2800383	Quote #:	Sales Order #: 7560669
Customer: ENCANA OIL & GAS (USA) INC. - EBUS	Customer Rep:		
Well Name: lone	Well #: 6-4-4	API/UWI #:	
Field:	City (SAP): PLATTEVILLE	County/Parish: Weld	State: Colorado
Contractor: Ensign	Rig/Platform Name/Num: 122		
Job Purpose: Cement Surface Casing			
Well Type: Development Well	Job Type: Cement Surface Casing		
Sales Person: FLING, MATTHEW	Srv Supervisor: SALINAS, JOSE	MBU ID Emp #:	100319

## Job Personnel

HES Emp Name	Exp Hrs	Emp #	HES Emp Name	Exp Hrs	Emp #	HES Emp Name	Exp Hrs	Emp #
AARON, WESLEY J	8	403606	CHAVEZ, JEROME Christophe	8	458298	OZBUN, RYAN Jacob	8	475709
SALINAS, JOSE R	8	100319	THOMPSON, STEVEN Darrin	8	445340			

## Equipment

HES Unit #	Distance-1 way	HES Unit #	Distance-1 way	HES Unit #	Distance-1 way	HES Unit #	Distance-1 way
10948695	12 mile	11064046C	12 mile	11410470C	12 mile		

## Job Hours

Date	On Location Hours	Operating Hours	Date	On Location Hours	Operating Hours	Date	On Location Hours	Operating Hours
08-11-10	8	3						

TOTAL	Total is the sum of each column separately							
-------	--	--	--	--	--	--	--	--

## Job

Formation Name					Job Times			
Formation Depth (MD)	Top	Bottom			Called Out	Date	Time	Time Zone
Form Type	BHST				On Location	11 - Aug - 2010	02:45	MST
Job depth MD	864. ft		Job Depth TVD	864. ft	Job Started	11 - Aug - 2010	05:00	MST
Water Depth	Wk Ht Above Floor		3. ft		Job Completed	11 - Aug - 2010	10:30	MST
Perforation Depth (MD)	From	To			Departed Loc	11 - Aug - 2010	11:15	MST

## Well Data

Description	New / Used	Max pressure psig	Size in	ID in	Weight lbm/ft	Thread	Grade	Top MD ft	Bottom MD ft	Top TVD ft	Bottom TVD ft
Open Hole				12.25				.	864.		
Surface Casing	New		8.625	8.097	24.	8 RD	J-55	.	854.		

## Tools and Accessories

Type	Size	Qty	Make	Depth	Type	Size	Qty	Make	Depth	Type	Size	Qty	Make
Guide Shoe					Packer					Top Plug			
Float Shoe					Bridge Plug					Bottom Plug			
Float Collar					Retainer					SSR plug set			
Insert Float										Plug Container			
Stage Tool										Centralizers			

## Miscellaneous Materials

Gelling Agt		Conc		Surfactant		Conc		Acid Type		Qty		Conc	%
Treatment Fld		Conc		Inhibitor		Conc		Sand Type		Size		Qty	

## Fluid Data

Stage/Plug #: 1													
Fluid #	Stage Type	Fluid Name			Qty	Qty uom	Mixing Density lbm/gal	Yield ft <sup>3</sup> /sk	Mix Fluid Gal/sk	Rate bbl/min	Total Mix Fluid Gal/sk		

Stage/Plug #: 1										
Fluid #	Stage Type	Fluid Name	Qty	Qty uom	Mixing Density lbm/gal	Yield ft <sup>3</sup> /sk	Mix Fluid Gal/sk	Rate bbl/min	Total Mix Fluid Gal/sk	
1	Water Spacer		20.00	bbl	8.33	.0	.0	5.0		
2	Lead Cement	SWIFTCEM (TM) SYSTEM (452990)	270.0	sacks	14.2	1.51	7.53	5.0	7.53	
7.53 Gal		FRESH WATER								
3	Water Displacement		52.00	bbl	8.33	.0	.0	5.0		
Calculated Values		Pressures		Volumes						
Displacement		Shut In: Instant		Lost Returns		Cement Slurry	72	Pad		
Top Of Cement		5 Min		Cement Returns	0	Actual Displacement	51.7	Treatment		
Frac Gradient		15 Min		Spacers	20	Load and Breakdown		Total Job		
Rates										
Circulating		Mixing	5	Displacement	5	Avg. Job			5	
Cement Left In Pipe	Amount	40 ft	Reason	Shoe Joint						
Frac Ring # 1 @	ID	Frac ring # 2 @	ID	Frac Ring # 3 @	ID	Frac Ring # 4 @	ID			
The Information Stated Herein Is Correct				Customer Representative Signature						

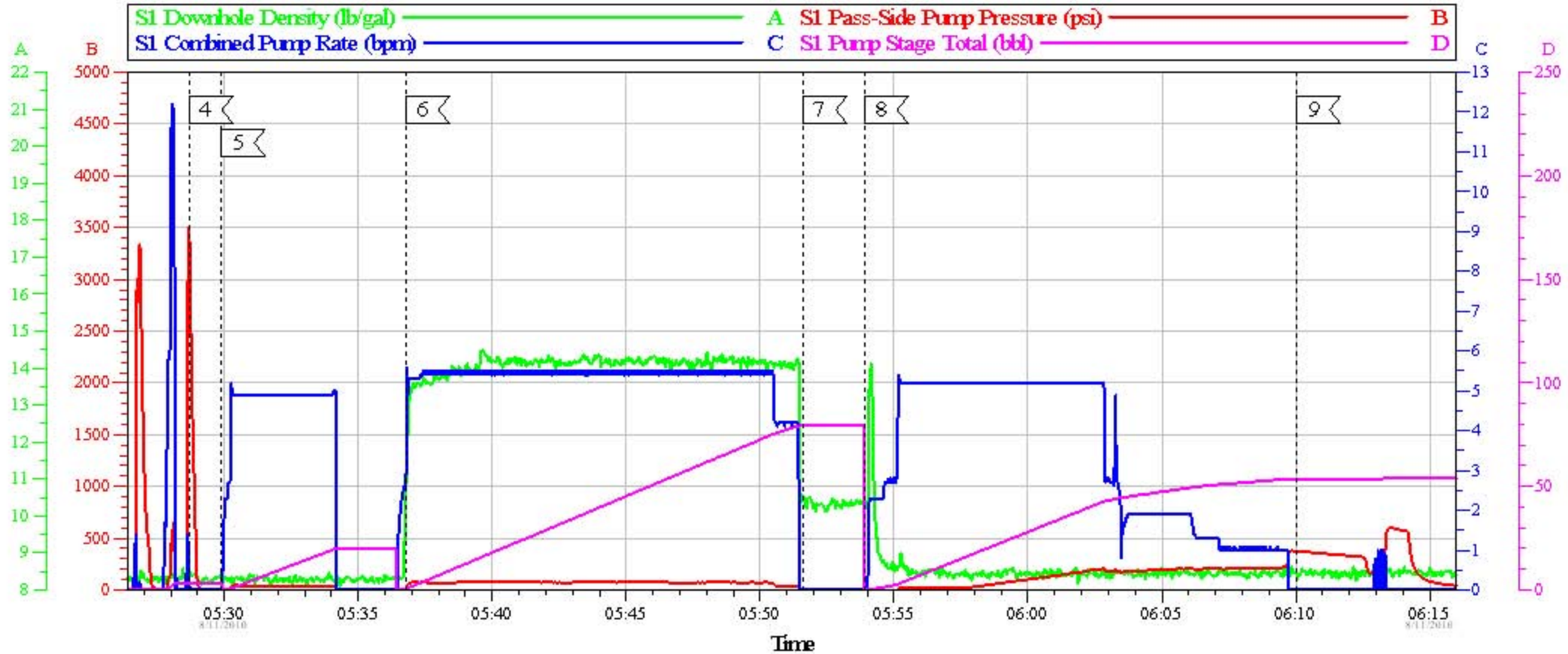
*The Road to Excellence Starts with Safety*

Sold To #: 340078		Ship To #: 2800383		Quote #:		Sales Order #: 7560669	
Customer: ENCANA OIL & GAS (USA) INC. - EBUS				Customer Rep:			
Well Name: lone			Well #: 6-4-4			API/UWI #:	
Field:		City (SAP): PLATTEVILLE		County/Parish: Weld		State: Colorado	
Legal Description:							
Lat:				Long:			
Contractor: Ensign			Rig/Platform Name/Num: 122				
Job Purpose: Cement Surface Casing						Ticket Amount:	
Well Type: Development Well			Job Type: Cement Surface Casing				
Sales Person: FLING, MATTHEW			Srvc Supervisor: SALINAS, JOSE			MBU ID Emp #: 100319	

Activity Description	Date/Time	Cht #	Rate bbl/min	Volume bbl		Pressure psig		Comments
				Stage	Total	Tubing	Casing	
Call Out	08/11/2010 00:30							
Arrive at Location from Service Center	08/11/2010 02:45							
Pre-Rig Up Safety Meeting	08/11/2010 03:00							
Rig-Up Equipment	08/11/2010 03:15							
Pre-Job Safety Meeting	08/11/2010 05:00							
Start Job	08/11/2010 05:15							RIG UP PLUG CONTAINER
Test Lines	08/11/2010 05:27		2	2			3500.0	TEST LINES W/ WATER
Pump Spacer	08/11/2010 05:29		4	10			3.0	WATER
Pump Cement	08/11/2010 05:36		5	62			16.0	PUMP 270 SKS (72 BBLS) SWIFTCM B1 @14.2 PPG
Drop Top Plug	08/11/2010 05:51		0	0			.0	DROP TOP PLUG
Pump Displacement	08/11/2010 05:53		4	51.7			10.0	PUMP WATER DISPLACEMENT
Other	08/11/2010 06:05		2					SLOW RATE DOWN TO LAND PLUG
Bump Plug	08/11/2010 06:10		2	51.7			600.0	
Other	08/11/2010 06:15		0	0				CLOSE VALVE
Bleeding Tubing Or Casing	08/11/2010 06:20		0	0			.0	BLEED PSI OFF
Other	08/11/2010 07:30							TOP OUT W/ 200 SK NEAT CMT
Pre-Rig Down Safety Meeting	08/11/2010 10:30							

Activity Description	Date/Time	Cht #	Rate bbl/ min	Volume bbl		Pressure psig		Comments
				Stage	Total	Tubing	Casing	
Rig-Down Equipment	08/11/2010 10:45							
Depart Location Safety Meeting	08/11/2010 11:30							
Depart Location for Service Center or Other Site	08/11/2010 11:45							

**ENCANA OIL & GAS**  
**IONE # 6-4-4 8 5/8 SURFACE**  
**SO# 7560669**



Global Event Log					
Intersection	SPPP	Intersection	SPPP	Intersection	SPPP
4 < Test Lines	05:28:41 3469	5 < Red Dye Spacer	05:29:54 -2.696	6 < 14.2 ppg SwiftCem.B1	05:36:45 16.45
7 < Drop Top Plug	05:51:36 -7.696	8 < Pump Displacement	05:53:54 -10.70	9 < Bump Plug	06:10:02 375.3

Customer: ENCANA  
 Well Description: SURFACE  
 Company Rep: ED PILCHER

Job Date: 11-Aug-2010  
 Job Type: SURFACE  
 Cement Supervisor: JOSE SALIAS

Sales Order #: 7560669  
 ADC Used: YES  
 Elite #:

OptiCem v6.4.9  
 11-Aug-10 09:10