

B

Report Printed on: AUG-01-10 11:03:34

CEMENT JOB REPORT



Problems During Job (I.E. Lost Returns, Equipment Failure, Bulk Delivery, Foaming, ETC)

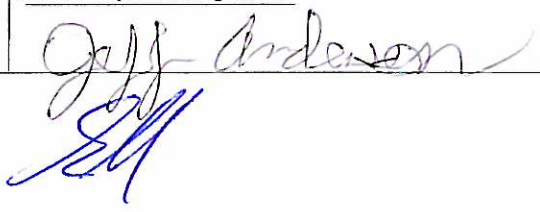
N/A

Problems After Job (I.E. Gas at Surface, Float Equipment Failed, ETC)

N/A

EXPLANATION: TROUBLE SETTING TOOL, RUNNING CSG, ETC. PRIOR TO CEMENTING: None

PRESSURE/RATE DETAIL						EXPLANATION	
TIME HR:MIN.	PRESSURE - PSI		RATE BPM	Bbl. FLUID PUMPED	FLUID TYPE	SAFETY MEETING: BJ CREW <input checked="" type="checkbox"/> CO. REP. <input checked="" type="checkbox"/>	
	PIPE	ANNULUS				TEST LINES	2000 PSI
						CIRCULATING WELL - RIG	<input checked="" type="checkbox"/> BJ <input type="checkbox"/>
08:30	0	0	0	0	N/A	Pre Rig Up Meeting	
09:30	0	0	0	0	N/A	Safety Meeting	
09:43	2939	0	0	0	WATER	Pressure Test	
09:48	80	0	4.8	20	WATER	Spacer	
09:55	215	0	4.9	75.7	CEMENT	Batch up and pump Lead Slurry 310 sks @ 14.5 PPG of Type III + 2.5% Calcuim Chloride + 0.15 lbs/sk Cello Flake + 60.8% Fresh Water	
10:24	0	0	0	0	N/A	Drop Plug	
10:27	44	0	4.8	30	WATER	Displacement	
10:35	315	0	4.2	3	WATER	Caught Cement	
10:37	278	0	2.4	17	WATER	Drop Rate	
10:45	344	0	1	3.5	WATER	Drop Rate	
10:48	276	0	0	0	N/A	Plug Down	
10:55	0	0	0	0	N/A	Rig Down Meeting	

BUMPED PLUG	PSI TO BUMP PLUG	TEST FLOAT EQUIP.	BBL.CMT RETURNS/ REVERSED	TOTAL BBL. PUMPED	PSI LEFT ON CSG	SPOT TOP OUT CEMENT	Service Supervisor Signature:
Y <input checked="" type="checkbox"/> N	500	Y <input checked="" type="checkbox"/> N	20	149.2	276	Y <input checked="" type="checkbox"/> N	

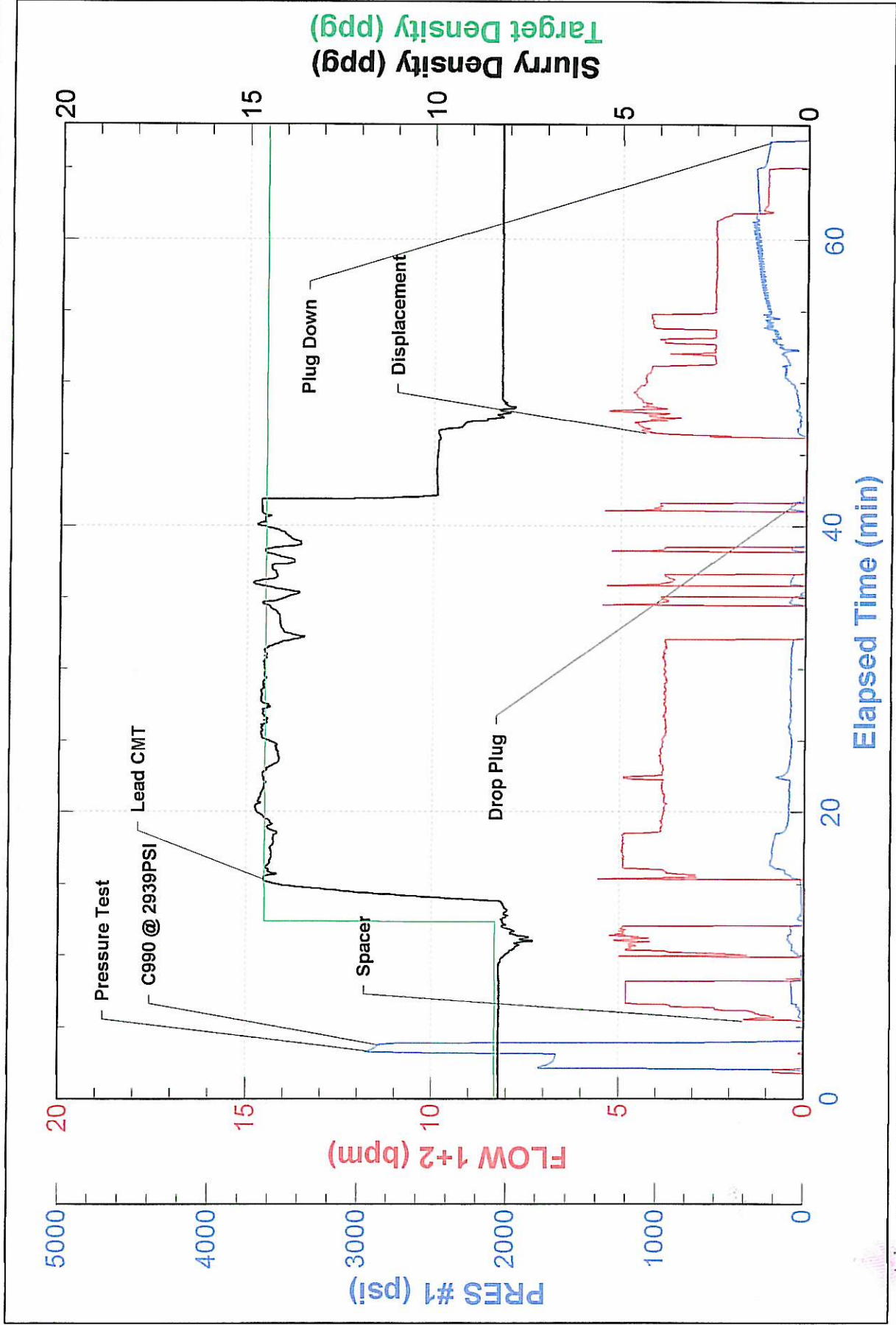


BJ Services JobMaster Program Version 3.20

Job Number: 1001660921

Customer: Encana

Well Name: Ione 41-2



FIELD RECEIPT NO. 1001660921

BJ Services Company



CUSTOMER		Encana Oil & Gas USA Inc		CREDIT APPROVAL NO.	A10011262442		PURCHASE ORDER NO.		CUSTOMER NUMBER		20023075 - 00201580		INVOICE NUMBER	
MAIL		STREET OR BOX NUMBER		CITY		STATE		ZIP CODE						
INVOICE TO :		370 17th Street Suite 1700		Denver		Colorado		80202						
DATE WORK COMPLETED		MO.	DAY	YEAR	BU SERVICES REPRESENTATIVE		WELL API NO.		WELL TYPE :					
08 01 2010		JEFFREY A ANDERSON		05123314210000		New Well								
BU SERVICES DISTRICT		Brighton		JOB DEPTH (ft)		879		WELL CLASS :		Gas				
WELL NAME AND NUMBER		IONE #41-2		TD WELL DEPTH (ft)		895		GAS USED ON JOB :		No Gas				
WELL LOCATION :		LEGAL DESCRIPTION		COUNTY/PARISH		STATE		JOB TYPE CODE :		Surface				
SEC 2 - 2 N - 66 W		Weid		Colorado										
PRODUCT CODE	DESCRIPTION	UNIT OF MEASURE	QUANTITY	LIST PRICE UNIT	GROSS AMOUNT	% DISC.	NET AMOUNT							
100112	Calcium Chloride	lbs	729	1.440	1,049.76	55%	472.39							
100295	Cello Flake	lbs	46.5	4.570	212.51	55%	95.63							
488019	FP-6L	gals	2	93.500	187.00	55%	84.15							
499632	Granulated Sugar	lbs	50	3.290	164.50	55%	74.03							
499703	Type III Cement	sacks	310	26.900	8,339.00	55%	3,752.55							
SUB-TOTAL FOR Product Material					9,952.77	55.00%	4,478.75							
A152	Personnel Surcharge - Cement Svc	ea	1	152.000	152.00	0%	152.00							
M100	Bulk Materials Service Charge	cu ft	327	3.930	1,285.11	55%	578.30							
SUB-TOTAL FOR Service Charges					1,437.11	49.18%	730.30							

SERVICE ORDER: I AUTHORIZE WORK TO BEGIN PER SERVICE INSTRUCTIONS IN ACCORDANCE WITH THE TERMS AND CONDITIONS PRINTED ON THE LAST PAGE OF THIS FORM AND REPRESENT THAT I HAVE AUTHORITY TO ACCEPT AND SIGN THIS ORDER.

SERVICE RECEIPT: I CERTIFY THAT THE MATERIALS AND SERVICES LISTED WERE RECEIVED AND ALL SERVICES PERFORMED IN A WORKMANLIKE MANNER.

SEE LAST PAGE FOR GENERAL TERMS AND CONDITIONS

CUSTOMER AUTHORIZED AGENT

BJ SERVICES APPROVED

Stephen C. [Signature]

BJ Services Company

**INVOICE NUMBER**

PRODUCT CODE	DESCRIPTION	UNIT OF MEASURE	QUANTITY	LIST PRICE UNIT	GROSS AMOUNT	% DISC.	NET AMOUNT
F003A	Cement Pump Casing, 0 - 1000 ft	4hrs	1	3,250.000	3,250.00	55%	1,462.50
J050	Cement Head	job	1	595.000	595.00	55%	267.75
J225	Data Acquisition, Cement, Standard	job	1	1,540.000	1,540.00	55%	693.00
J390	Mileage, Heavy Vehicle	miles	32	8.550	273.60	55%	123.12
J391	Mileage, Auto, Pick-Up or Trealing Van	miles	32	4.830	154.56	55%	69.55
	SUB-TOTAL FOR Equipment				5,813.16	55.00%	2,615.92
J401	Bulk Delivery, Dry Products	ton-mi	240	2.850	684.00	55%	307.80
	SUB-TOTAL FOR Freight/Delivery Charges				684.00	55%	307.80
	Encana Oil & Gas (USA) Inc.						
	DUP/Paradox						
	AFE/CC:				17,887.04	54.53%	8,132.77
	Major:						
	Minor:						

SERVICE RECEIPT: I CERTIFY THAT THE MATERIALS AND SERVICES LISTED WERE RECEIVED AND ALL SERVICES PERFORMED IN A WORKMANLIKE MANNER.

CUSTOMER AUTHORIZED AGENT

BJ SERVICES APPROVED