
OXY GRAND JUNCTION EBUSINESS

**CC 697-09-33A
GRAND VALLEY
Garfield County , Colorado**

Cement Surface Casing
13-Sep-2010

Post Job Report

The Road to Excellence Starts with Safety

Sold To #: 344034		Ship To #: 2806839		Quote #:		Sales Order #: 7632917	
Customer: OXY GRAND JUNCTION EBUSINESS				Customer Rep: CLAUSSEN, CURT			
Well Name: CC			Well #: 697-09-33A			API/UWI #: 05-045-18346	
Field: GRAND VALLEY		City (SAP): PARACHUTE		County/Parish: Garfield		State: Colorado	
Lat: N 39.536 deg. OR N 39 deg. 32 min. 9.989 secs.				Long: W 108.238 deg. OR W -109 deg. 45 min. 44.647 secs.			
Contractor: H&P Drilling			Rig/Platform Name/Num: H&P 330				
Job Purpose: Cement Surface Casing							
Well Type: Development Well			Job Type: Cement Surface Casing				
Sales Person: DUNNING, DUSTIN			Srvc Supervisor: FEUERBORN, JOHN			MBU ID Emp #: 381677	

Job Personnel

HES Emp Name	Exp Hrs	Emp #	HES Emp Name	Exp Hrs	Emp #	HES Emp Name	Exp Hrs	Emp #
BRUN, JUSTIN M	20	459269	CUNNINGHAM, TANNER	20	445660	FEUERBORN, JOHN William	20	381677
SLAUGHTER, JESSE Dean	20	454315						

Equipment

HES Unit #	Distance-1 way	HES Unit #	Distance-1 way	HES Unit #	Distance-1 way	HES Unit #	Distance-1 way
10616651C	120 mile	10822535	120 mile	10995025	120 mile	11259884	120 mile

Job Hours

Date	On Location Hours	Operating Hours	Date	On Location Hours	Operating Hours	Date	On Location Hours	Operating Hours
9-13-10	20	6						

TOTAL	Total is the sum of each column separately							
--------------	--	--	--	--	--	--	--	--

Job

Job Times

Formation Name				Date	Time	Time Zone
Formation Depth (MD)	Top	Bottom		Called Out	12 - Sep - 2010	09:00 CST
Form Type	BHST			On Location	13 - Sep - 2010	01:00 CST
Job depth MD	2700. ft	Job Depth TVD	2700. ft	Job Started	13 - Sep - 2010	08:28 CST
Water Depth		Wk Ht Above Floor	4. ft	Job Completed	13 - Sep - 2010	20:32 CST
Perforation Depth (MD)	From	To		Departed Loc		

Well Data

Description	New / Used	Max pressure psig	Size in	ID in	Weight lbm/ft	Thread	Grade	Top MD ft	Bottom MD ft	Top TVD ft	Bottom TVD ft
-------------	------------	-------------------	---------	-------	---------------	--------	-------	-----------	--------------	------------	---------------

Sales/Rental/3rd Party (HES)

Description	Qty	Qty uom	Depth	Supplier
PLUG,CMTG,TOP,9 5/8,HWE,8.16 MIN/9.06 MA	1	EA		
R/A DENSOMETER W/CHART RECORDER,/JOB,ZI	1	JOB		
ADC (AUTO DENSITY CTRL) SYS, /JOB,ZI	1	JOB		

Tools and Accessories

Type	Size	Qty	Make	Depth	Type	Size	Qty	Make	Depth	Type	Size	Qty	Make
Guide Shoe					Packer					Top Plug	9.625	1	
Float Shoe					Bridge Plug					Bottom Plug			
Float Collar					Retainer					SSR plug set			
Insert Float										Plug Container	9.625	1	
Stage Tool										Centralizers			

Miscellaneous Materials

Gelling Agt	Conc	Surfactant	Conc	Acid Type	Qty	Conc	%
Treatment Fld	Conc	Inhibitor	Conc	Sand Type	Size	Qty	

Fluid Data									
Stage/Plug #: 1									
Fluid #	Stage Type	Fluid Name	Qty	Qty uom	Mixing Density lbm/gal	Yield ft ³ /sk	Mix Fluid Gal/sk	Rate bbl/min	Total Mix Fluid Gal/sk
1	Water Spacer		20	bbl	8.33	.0	.0	.0	
2	Super Flush 101	SUPER FLUSH 101 - SBM (12199)	20	bbl	10.	.0	.0	.0	
3	Water Spacer		20	bbl	.	.0	.0	.0	
4	Lead Cement	VERSACEM (TM) SYSTEM (452010)	1040	sacks	12.3	2.33	12.62		12.62
		12.62 Gal	FRESH WATER						
5	Tail Cement	VERSACEM (TM) SYSTEM (452010)	160	sacks	12.8	2.07	10.67		10.67
		10.67 Gal	FRESH WATER						
6	Displacement		204.5	bbl	.	.0	.0	.0	
7	Topout Cement	HALCEM (TM) SYSTEM (452986)	264	sacks	12.5	1.97	10.96		10.96
		10.96 Gal	FRESH WATER						
Calculated Values		Pressures		Volumes					
Displacement	204.5	Shut In: Instant		Lost Returns		Cement Slurry		Pad	
Top Of Cement	0	5 Min		Cement Returns	1	Actual Displacement	204.5	Treatment	
Frac Gradient		15 Min		Spacers	60	Load and Breakdown		Total Job	
Rates									
Circulating		Mixing		6	Displacement	6	Avg. Job		6
Cement Left In Pipe	Amount	0 ft	Reason	Shoe Joint					
Frac Ring # 1 @	ID		Frac ring # 2 @	ID		Frac Ring # 3 @	ID		Frac Ring # 4 @
The Information Stated Herein Is Correct				Customer Representative Signature					

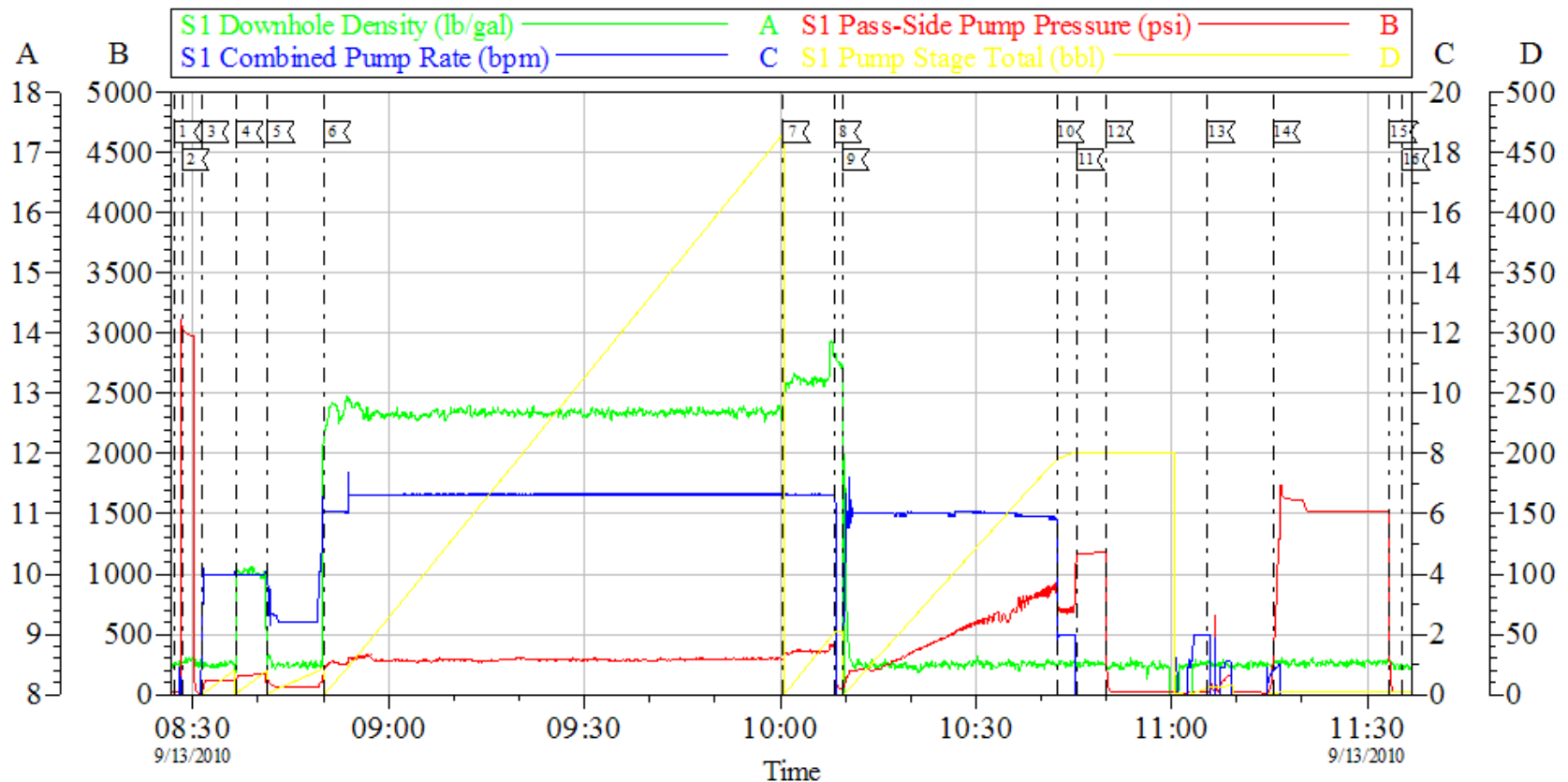
The Road to Excellence Starts with Safety

Sold To #: 344034	Ship To #: 2806839	Quote #:	Sales Order #: 7632917
Customer: OXY GRAND JUNCTION EBUSINESS		Customer Rep: CLAUSSEN, CURT	
Well Name: CC	Well #: 697-09-33A	API/UWI #: 05-045-18346	
Field: GRAND VALLEY	City (SAP): PARACHUTE	County/Parish: Garfield	State: Colorado
Legal Description:			
Lat: N 39.536 deg. OR N 39 deg. 32 min. 9.989 secs.		Long: W 108.238 deg. OR W -109 deg. 45 min. 44.647 secs.	
Contractor: H&P Drilling		Rig/Platform Name/Num: H&P 330	
Job Purpose: Cement Surface Casing			Ticket Amount:
Well Type: Development Well		Job Type: Cement Surface Casing	
Sales Person: DUNNING, DUSTIN		Srvc Supervisor: FEUERBORN, JOHN	MBU ID Emp #: 381677

Activity Description	Date/Time	Cht #	Rate bbl/min	Volume bbl		Pressure psig		Comments
				Stage	Total	Tubing	Casing	
Depart Yard Safety Meeting	09/12/2010 22:00							
Crew Leave Yard	09/12/2010 22:15							
Arrive At Loc	09/13/2010 01:00							
Safety Meeting - Assessment of Location	09/13/2010 01:10							
Other	09/13/2010 01:20							SPOT EQUIPMENT
Pre-Rig Up Safety Meeting	09/13/2010 01:30							
Rig-Up Equipment	09/13/2010 01:46							
Other	09/13/2010 07:55							RIG CIRCULATING ON BOTTOM GOOD RETURNS
Pre-Job Safety Meeting	09/13/2010 08:00							
Start Job	09/13/2010 08:27							
Test Lines	09/13/2010 08:28							2500psi ON TRUCK AND LINES
Pump Spacer 1	09/13/2010 08:31		4	20			120.0	H2O
Pump Spacer 1	09/13/2010 08:36		4	20			165.0	SUPER FLUSH XLC, TRANSPORT LOCATION AT 01:00 DONE AT 10:45
Pump Spacer 1	09/13/2010 08:41		2	20			60.0	H2O

Activity Description	Date/Time	Cht #	Rate bbl/min	Volume bbl		Pressure psig		Comments
				Stage	Total	Tubing	Casing	
Pump Lead Cement	09/13/2010 08:50		6	431.5			325.0	1040sks PUMPED AT 12.3ppg 2.33y 12.62wr TO OF CEMENT 0' ADDED 7 BOXES OF TUFF FIBER TO DOWN HOLE SIDE OF TUB DURING LEAD CMT.
Pump Tail Cement	09/13/2010 10:00		6	58.1			350.0	160sks PUMPED AT 12.8ppg 2.07y 10.67wr TOP OF CEMENT 2256'
Drop Top Plug	09/13/2010 10:08							PLUG AWAY
Pump Displacement	09/13/2010 10:09		6				920.0	H2O
Other	09/13/2010 10:42		2	194			720.0	SLOW RATE
Bump Plug	09/13/2010 10:45		2	204.5			1200.0	
Check Floats	09/13/2010 10:50							HOLDING
Other	09/13/2010 11:05		2	7.5			300.0	PUMP 20# SUGAR WATER DOWN PARISITE
Other	09/13/2010 11:15						1500.0	PRESSURE TEST CASING
Start Job	09/13/2010 13:08							FIRST TOP OUT
Pump Spacer 1	09/13/2010 13:09		0.5	0.5				H2O
Pump Tail Cement	09/13/2010 13:16		2	72.6			85.0	207sks PUMPED AT 12.5ppg 1.97y 10.96wr DOWN HOLE
Shutdown	09/13/2010 13:56							WAIT FOR ANOUTHER TOP OUT TRUCK
Start Job	09/13/2010 20:20							2ND TOP OUT
Pump Tail Cement	09/13/2010 20:28		2	20			70.0	57sks PUMPED AT 12.5ppg 1.97y 10.96wr DOWN HOLE
Other	09/13/2010 20:31							CEMENT TO SURFACE
Shutdown	09/13/2010 20:32							NEED TO ADD 350sks OF TOP OUT TO TICKET LEFT 293sks OF TOP OUT ON LOCATION IN BULK TRUCK

OXY SURFACE



Local Event Log

1 START JOB	08:27:07	2 TEST LINES	08:28:19	3 PUMP SPACER	08:31:24
4 PUMP SUPERFLUSH	08:36:40	5 PUMP SPACER	08:41:26	6 PUMP LEAD CEMENT	08:50:01
7 PUMP TAIL CEMENT	10:00:24	8 DROP PLUG	10:08:18	9 PUMP DISPLACEMENT	10:09:29
10 SLOW RATE	10:42:25	11 BUMP PLUG	10:45:30	12 CHECK FLOATS	10:50:02
13 PUMP PARISITE	11:05:34	14 PRESSURE CHECK CASING	11:15:34	15 RELEASE PRESSURE	11:33:28
16 END JOB	11:35:22				

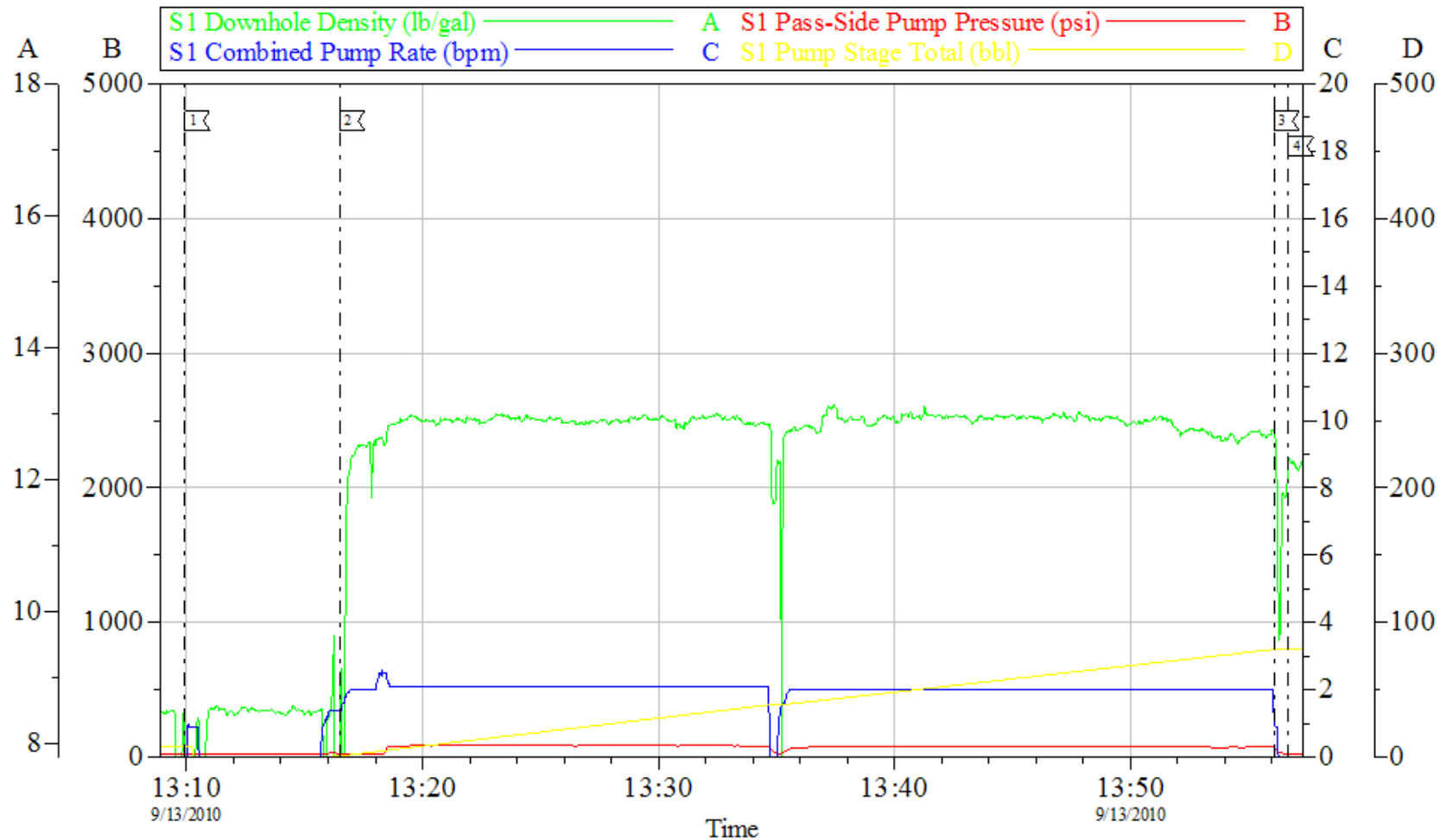
Customer: OXY
Well Description: CC 697-9-33A
Company Rep: KURT CLAUSSEN

Job Date: 13-Sep-2010
Job Type: SURFACE
Cement Supervisor: JOHN FEUERBORN

Sales Order #: 7632917
ADC Used: YES
Elite #4: JUSTIN BRUN

OptiCem v6.4.0
13-Sep-10 11:56

OXY TOP OUT 1

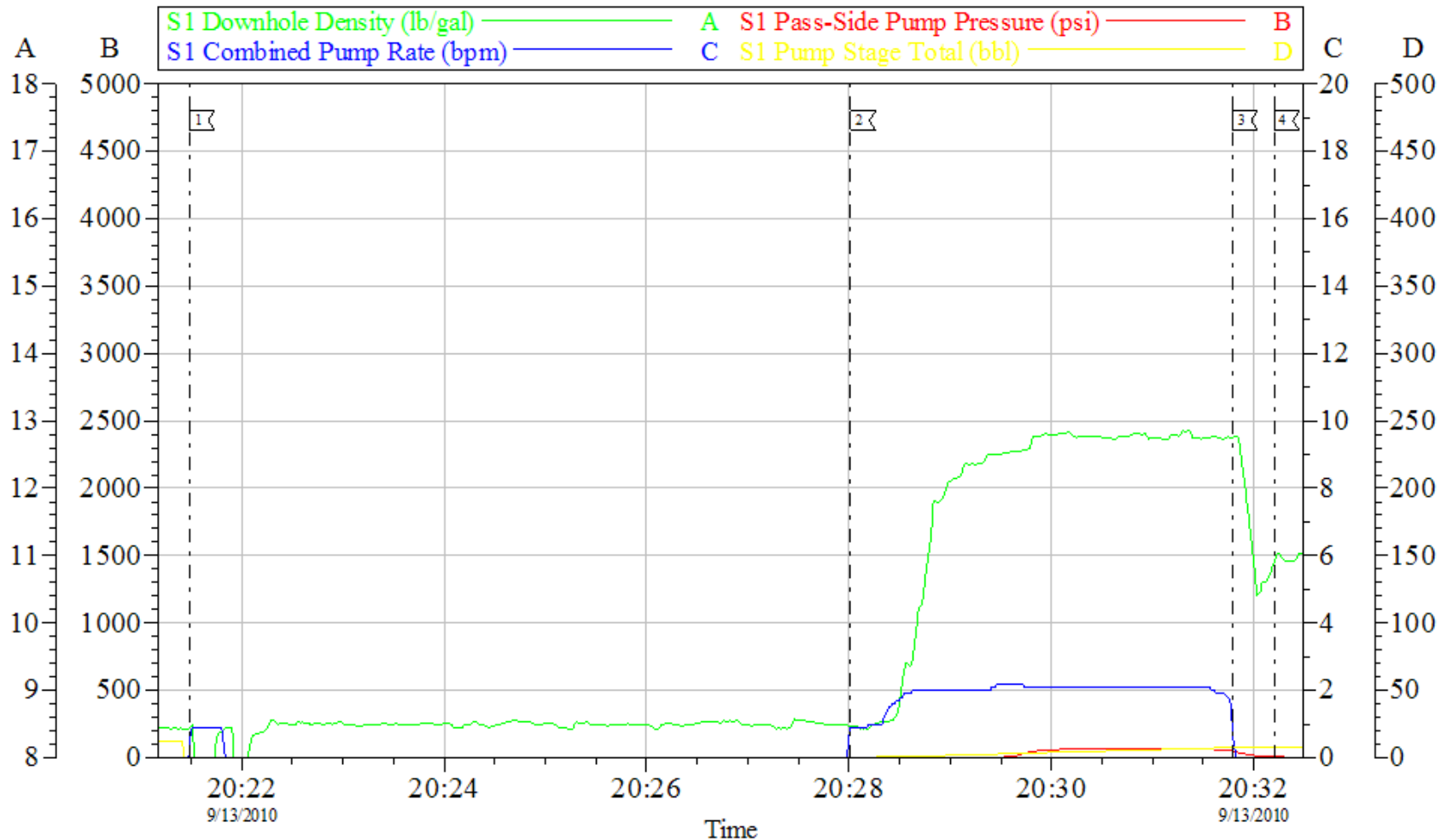


Local Event Log	
1	PUMP SPACER 13:09:55
2	PUMP TOP OUT 13:16:29
3	SHUT DOWN 13:56:05
4	END JOB 13:56:42

Customer:	Job Date: 13-Sep-2010	Sales Order #: 7632917
Well Description:	Job Type:	ADC Used:
Company Rep:	Cement Supervisor:	Elite #:

OptiCem v6.4.0
13-Sep-10 14:14

OXY TOP OUT 2



Local Event Log			
1	PUMP SPACER	20:21:29	2
2	PUMP TOP OUT	20:28:01	
3	CEMENT TO SURFACE	20:31:47	4
4	END JOB	20:32:12	

Customer:	Job Date: 13-Sep-2010	Sales Order #: 7632927
Well Description:	Job Type:	ADC Used:
Company Rep:	Cement Supervisor:	Elite #:

OptiCem v6.4.0
13-Sep-10 20:47