

Stell Surveying Services, LLC

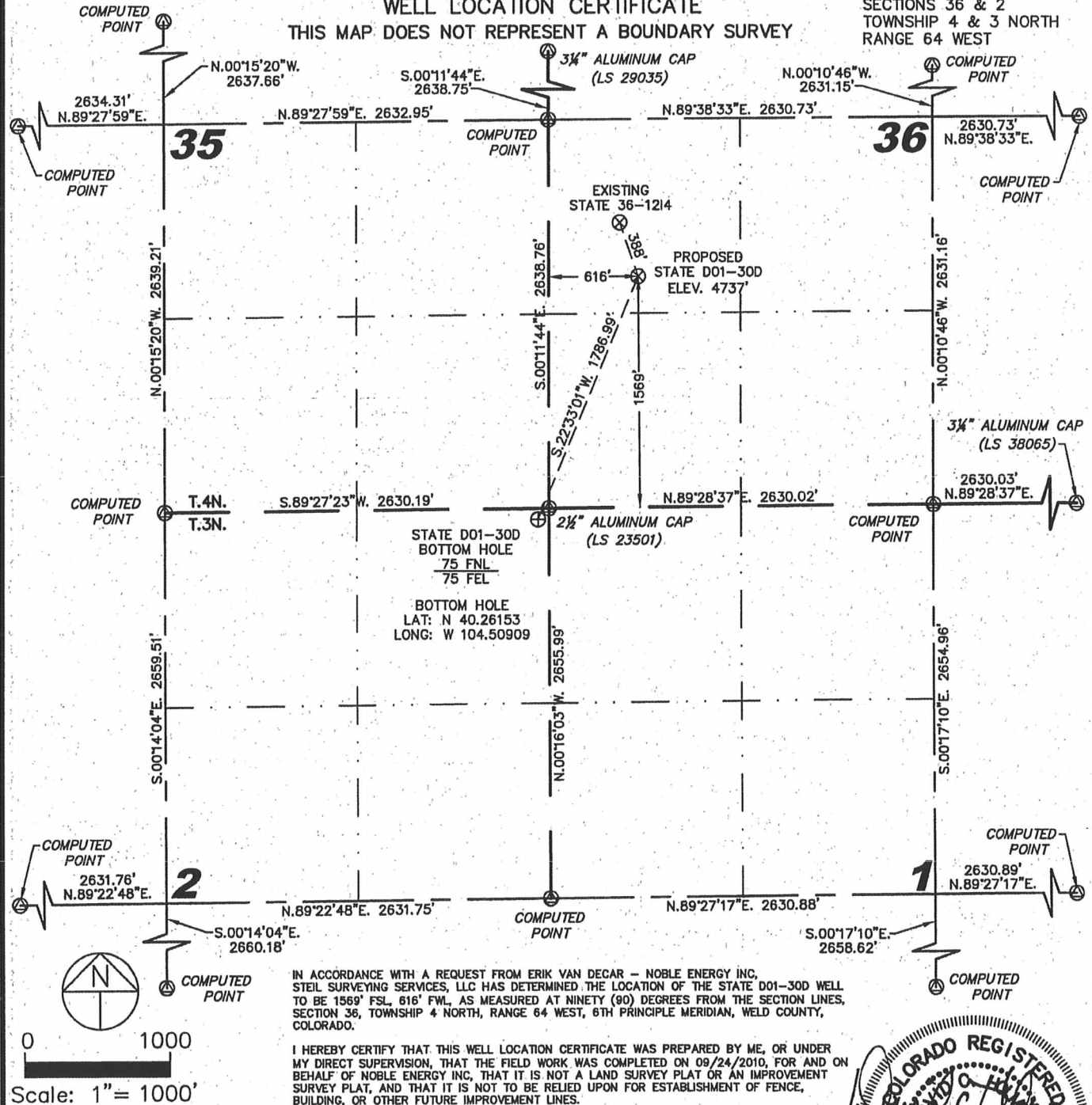
1102 West 19th Street P.O. BOX 2073

Cheyenne, Wyoming 82009

WELL LOCATION CERTIFICATE

THIS MAP DOES NOT REPRESENT A BOUNDARY SURVEY

SECTIONS 36 & 2
TOWNSHIP 4 & 3 NORTH
RANGE 64 WEST



NOTES:

- 1) BASIS OF BEARINGS FOR THIS MAP ARE BASED UPON GPS OBSERVATIONS MADE ON 09/24/2010 BETWEEN MONUMENTS LOCATED AT THE SOUTHWEST SECTION CORNER AND THE NORTHWEST SECTION CORNER OF SAID SECTION AND WITH ALL BEARINGS SHOWN HEREON RELATIVE THERETO.
- 2) COORDINATES SHOWN ARE COLORADO STATE PLANE (NORTH ZONE) NAD 83.
- 3) ELEVATIONS ARE BASED UPON NGS OPUS SOLUTION NAVD 88 DATUM.
- 4) THE NEAREST EXISTING WELL IS: STATE 36-1214, 388' NORTHWEST.
- 5) SEE VISIBLE IMPROVEMENTS EXHIBIT FOR ALL IMPROVEMENTS WITHIN 600'.
- 6) THE LOCATION FALLS IN PASTURE LAND.

LATITUDE & LONGITUDE (NAD 83 SURFACE HOLE):

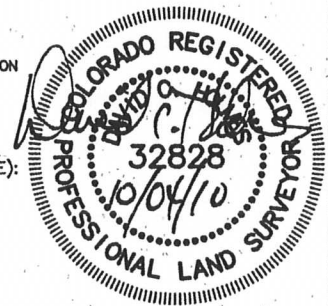
LATITUDE: N 40.26604°

LONGITUDE: W 104.50657°

PDOP: 1.9

QUARTER-QUARTER: NW/4SW/4

NEAREST PROPERTY LINE: 616' TO THE WEST



Completed 09/29/2010

LEGEND

⊙ FOUND SURVEY MONUMENT PER MONUMENT RECORD - EXCEPTIONS NOTED.

(C) CALCULATED DIMENSION

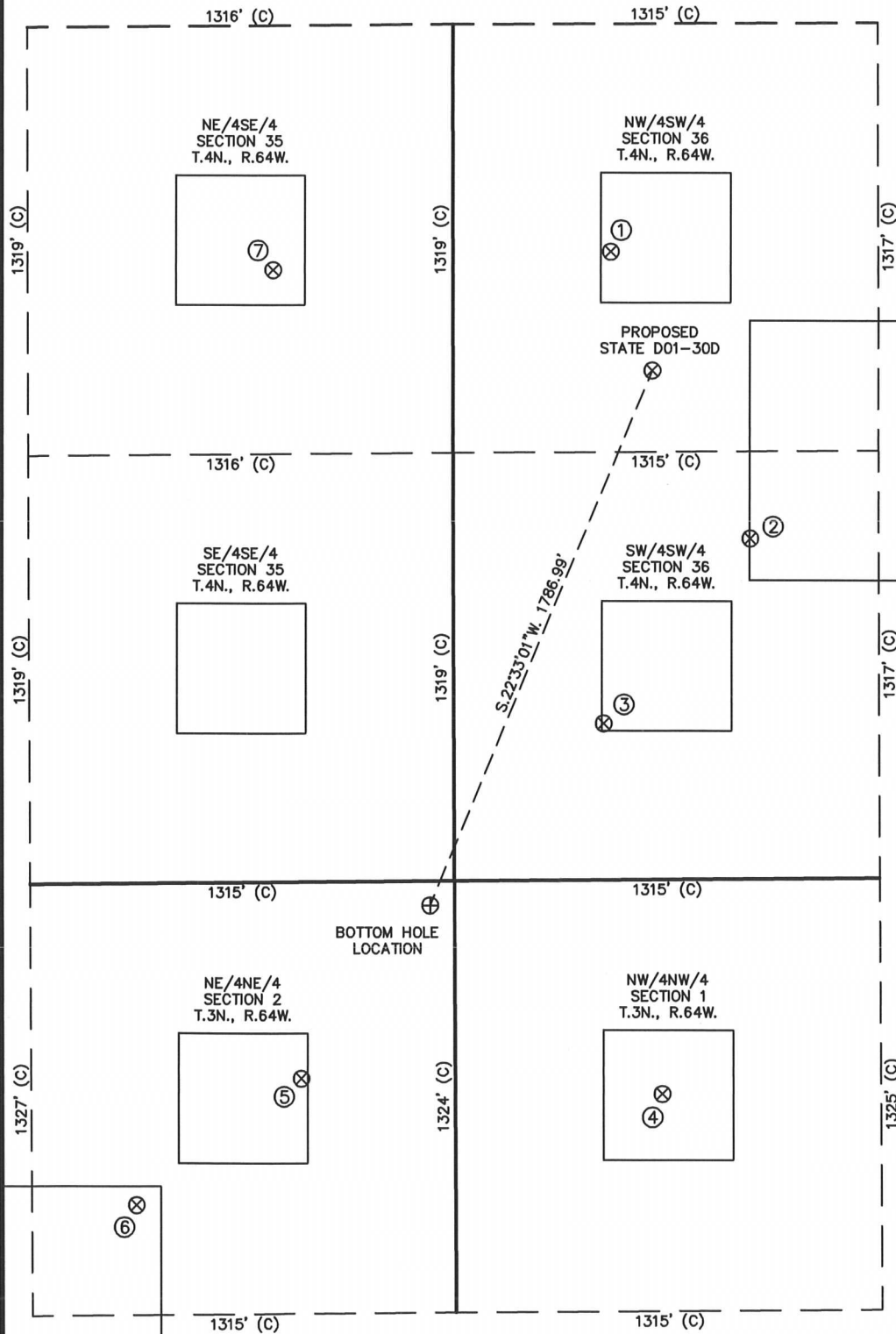
David C. Holmes
Professional Land Surveyor Registration No. 32828
State of Colorado

JOB #: 10086

NOTICE: According to Colorado law you MUST commence any legal action based upon any defect in this W.L.C. within three years after you first discover such defect. In no event may any action based upon any defect in this W.L.C. be commenced more than ten years from the sold date of the certification shown hereon.

SKETCH - STATE D01-30D

SECTION 36
TOWNSHIP 4 NORTH
RANGE 64 WEST



- | | |
|--|---|
| ①
STATE 36-1214
NW/SW SEC. 36
T.4N., R.64W.
1936' FSL
489' FWL
EL 4727'
N 40.26705
W 104.50702
PDOP 1.9 | ②
STATE B14-36
SW/SW SEC. 36
T.4N., R.64W.
1049' FSL
918' FWL
EL 4748'
N 40.26461
W 104.50550
PDOP 2.0 |
| ③
STATE C36-13
SW/SW SEC. 36
T.4N., R.64W.
482' FSL
463' FWL
EL 4756'
N 40.26306
W 104.50715
PDOP 1.9 | ④
ABBEY D1-4
NW/NW SEC. 1
T.3N., R.64W.
660' FNL
639' FWL
EL 4733'
N 40.25992
W 104.50655
PDOP 2.0 |
| ⑤
KERN D2-1
NE/NE SEC. 2
T.3N., R.64W.
606' FNL
476' FEL
EL 4720'
N 40.26008
W 104.51054
PDOP 2.4 | ⑥
KERN 1
NE/NE SEC. 2
T.3N., R.64W.
990' FNL
990' FEL
(RECORD
LOCATION) |
| ⑦
BOOTH 9-35
NE/SE SEC. 35
T.4N., R.64W.
1886' FSL
555' FEL
EL 4716'
N 40.26692
W 104.51076
PDOP 2.0 | |

NOTES:

- 1) THIS SKETCH DOES NOT REPRESENT A BOUNDARY SURVEY.
- 2) THE DATUM FOR THE LATITUDES AND LONGITUDES ON THIS SKETCH IS NAD83.

