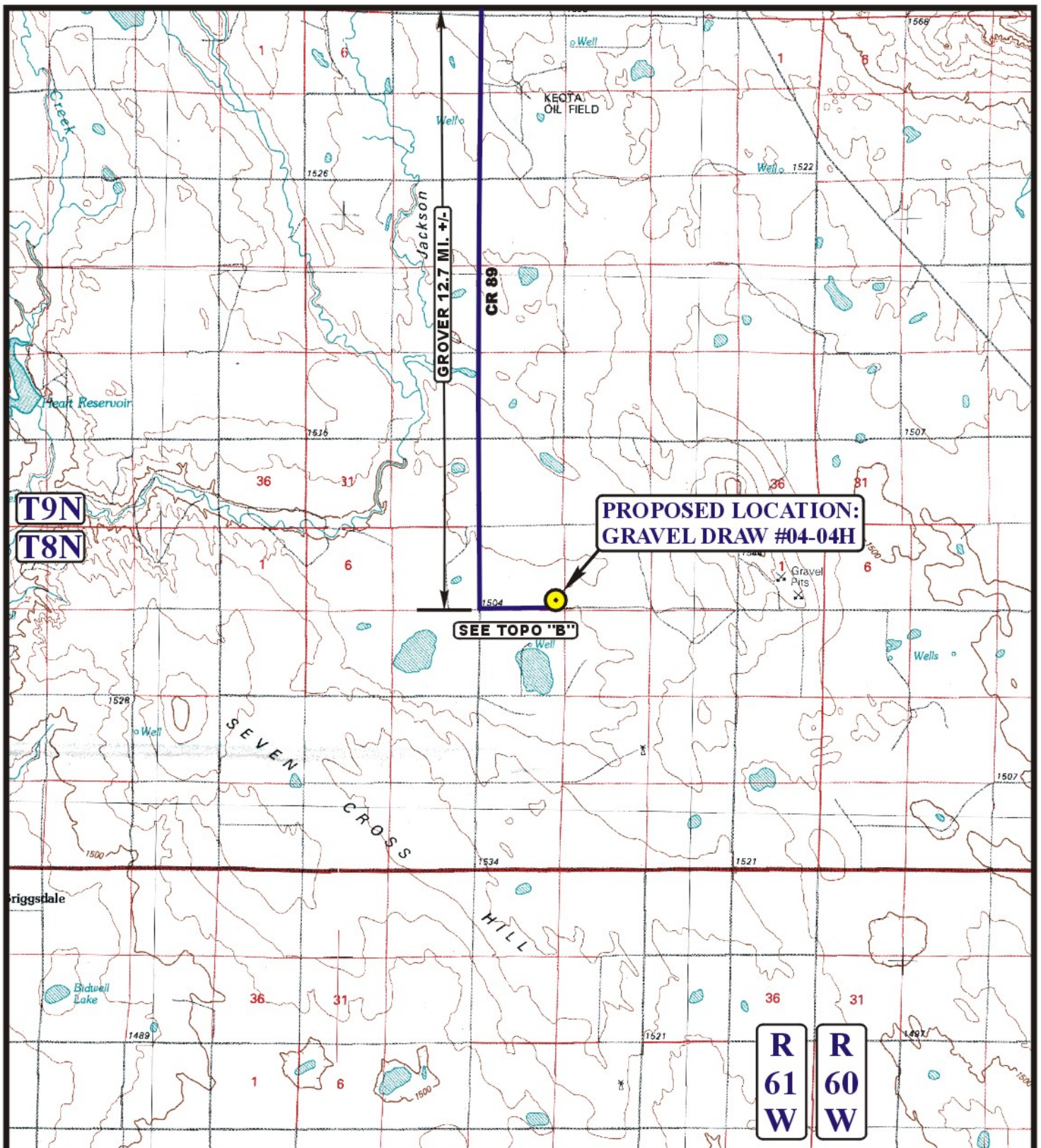


EOG RESOURCES, INC.  
GRAVEL DRAW #04-04H  
SECTION 4, T8N, R61W, 6<sup>th</sup> P.M.

PROCEED IN A SOUTHEASTERLY DIRECTION FROM GROVER, COLORADO ALONG COUNTY ROAD 390 APPROXIMATELY 0.2 MILES TO THE JUNCTION OF THIS ROAD AND COUNTY ROAD 89 TO THE SOUTH; TURN RIGHT AND PROCEED IN A SOUTHERLY DIRECTION APPROXIMATELY 12.5 MILES TO THE BEGINNING OF THE PROPOSED ACCESS ROAD TO THE EAST; FOLLOW ROAD FLAGS IN AN EASTERLY, THEN NORTHERLY, THEN EASTERLY DIRECTION APPROXIMATELY 4923' TO THE PROPOSED LOCATION.

TOTAL DISTANCE FROM GROVER, COLORADO TO THE PROPOSED LOCATION IS APPROXIMATELY 13.6 MILES.



# LEGEND:

 PROPOSED LOCATION

EOG RESOURCES, INC.

**GRAVEL DRAW #04-04H**  
**SECTION 4, T8N, R61W, 6th P.M.**  
**501' FSL 501' FEL**



**Uintah Engineering & Land Surveying**  
**85 South 200 East Vernal, Utah 84078**  
**(435) 789-1017 \* FAX (435) 789-1813**



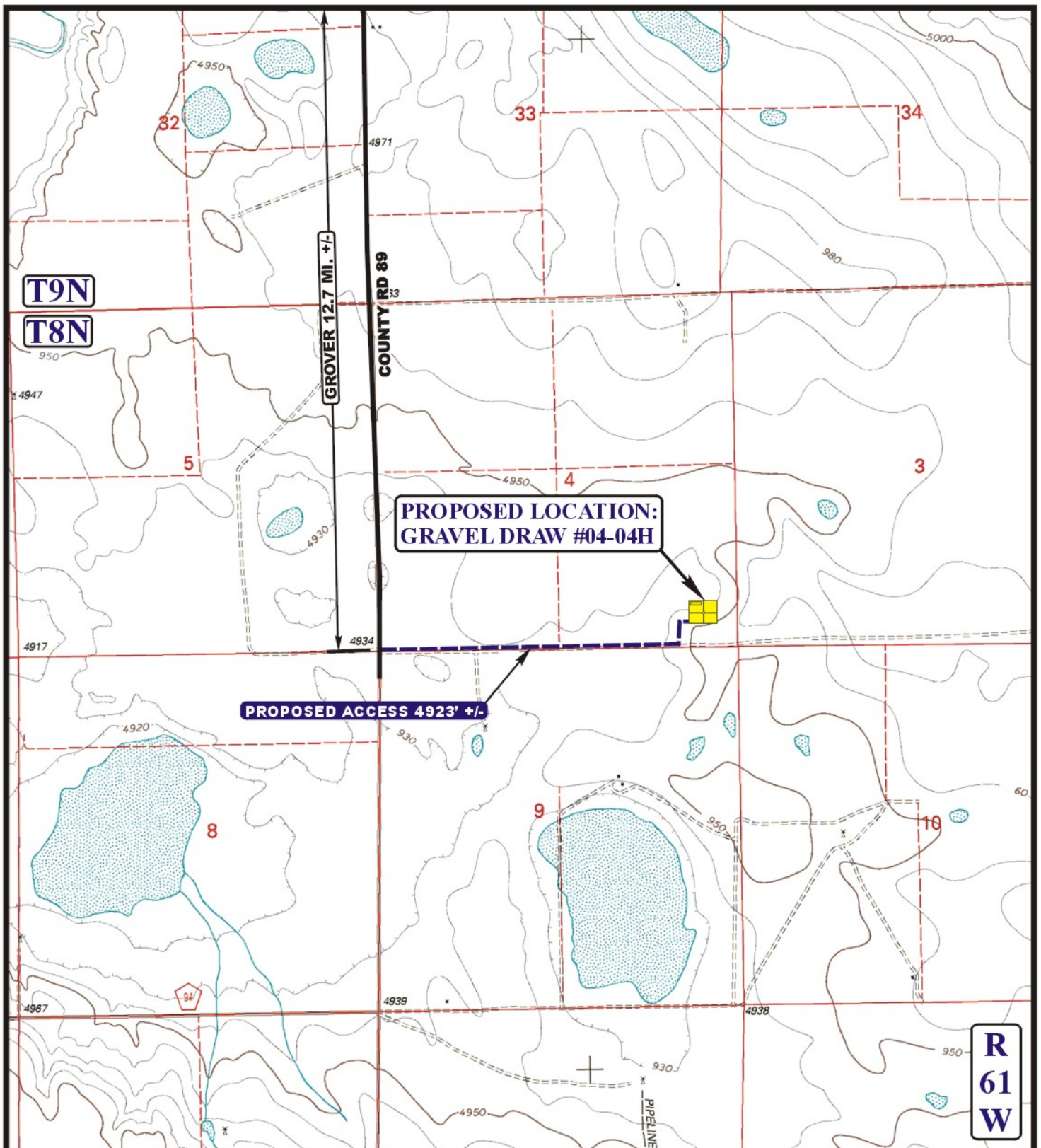
**ACCESS ROAD**  
**MAP**

**12 14 10**  
MONTH DAY YEAR

SCALE: 1:100,000 DRAWN BY: S.L. REVISED: 00-00-00







# LEGEND:

 EXISTING ROAD  
 PROPOSED ACCESS ROAD



EOG RESOURCES, INC.

**GRAVEL DRAW #04-04H**  
**SECTION 4, T8N, R61W, 6th P.M.**  
**501' FSL 501' FEL**



**Utah Engineering & Land Surveying**  
**85 South 200 East Vernal, Utah 84078**  
**(435) 789-1017 \* FAX (435) 789-1813**

**TOPOGRAPHIC** **12 14 10**  
**MAP** **MONTH DAY YEAR**

**SCALE: 1" = 2000'** **DRAWN BY: S.L.** **REVISED: 00-00-00**

