



Company: **ENERPLUS RESOURCES (USA) CORPORATION**

Well: **BLACH 4-54-9-33**

Field: **WILDCAT**

County: **WASHINGTON** State: **COLORADO**

CEMENT BOND LOG
GAMMA RAY
CASING COLLAR LOG

County:	WASHINGTON			
Field:	WILDCAT			
Location:	SEC 9, T4N, R54W			
Well:	BLACH 4-54-9-33			
Company:	ENERPLUS RESOURCES (USA)			
LOCATION				
SEC 9, T4N, R54W		Elev.: K.B. 4321.00 ft		
SHL: 660' FSL X 660' FWL SWSW		G.L. 4309.00 ft		
		D.F. 4320.00 ft		
Permanent Datum: _____		GROUND LEVEL _____ Elev.: 4309.00 ft _____		
Log Measured From: _____		KELLY BUSHING _____ 12.00 ft above Perm. Datum		
Drilling Measured From: _____		KELLY BUSHING _____		
API Serial No. _____		Section 9	Township 4N	Range 54W
05-121-10995-000C				

PVT DATA				Run 1	Run 2	Run 3
Oil Density						
Water Salinity						
Gas Gravity						
Bo						
Bw						
1/Bg						
Bubble Point Pressure						
Bubble Point Temperature						
Solution GOR						
Maximum Deviation						
CEMENTING DATA						
Primary/Squeeze	Primary					
Casing String No						
Lead Cement Type						
Volume						
Density						
Water Loss						
Additives						
Tail Cement Type						
Volume						
Density						
Water Loss						
Additives						
Expected Cement Top						

Logging Date	6-Apr-2010			
Run Number	1			
Depth Driller	4500 ft			
Schlumberger Depth	4431 ft			
Bottom Log Interval	4415 ft			
Top Log Interval	3200 ft			
Casing Fluid Type	Water			
Salinity				
Density	8.34 lbm/gal			
Fluid Level	0 ft			
BIT/CASING/TUBING STRING				
Bit Size	6.250 in			
From				
To				
Casing/Tubing Size	4.500 in			
Weight	10.5 lbm/ft			
Grade				
From				
To				
Maximum Recorded Temperatures	152 degF	152	152	
Logger On Bottom	6-Apr-2010	Time	10:07	
Unit Number	383	FORT MORGAN		
Recorded By	JEFF HICKS/ SHANE WALKER			
Witnessed By	JEFF SCHNEIDER			

Logging Date						
Run Number						
Depth Driller						
Schlumberger Depth						
Bottom Log Interval						
Top Log Interval						
Casing Fluid Type						
Salinity						
Density						
Fluid Level						
BIT/CASING/TUBING STRING						
Bit Size						
From						
To						
Casing/Tubing Size						
Weight						
Grade						
From						
To						
Maximum Recorded Temperatures						
Logger On Bottom		Time				
Unit Number		Location				
Recorded By						
Witnessed By						

DEPTH SUMMARY LISTING

Date Created: 6-APR-2010 9:23:33

Depth System Equipment

Depth Measuring Device		Tension Device		Logging Cable	
Type:	IDW-B	Type:	CMTD-B/A	Type:	1-25ZT
Serial Number:	6493	Serial Number:		Serial Number:	
Calibration Date:	15-OCT-2009	Calibration Date:	02-12-2009	Length:	19050 FT
Calibrator Serial Number:	33	Calibrator Serial Number:	112544	Conveyance Method: Wireline Rig Type: LAND	
Calibration Cable Type:	1-25ZT	Number of Calibration Points:	0		
Wheel Correction 1:	-2				
Wheel Correction 2:	-1				

Depth Control Parameters

Log Sequence:	First Log In the Well
Rig Up Length At Surface:	0.00 FT
Rig Up Length At Bottom:	0.00 FT
Rig Up Length Correction:	0.00 FT
Stretch Correction:	
Tool Zero Check At Surface:	

Depth Control Remarks

1. IDW PRIMARY DEPTH SOURCE
2. DRUM COUNTER SECONDARY DEPTH SOURCE
- 3.
- 4.
- 5.
- 6.

DISCLAIMER

THE USE OF AND RELIANCE UPON THIS RECORDED-DATA BY THE HEREIN NAMED COMPANY (AND ANY OF ITS AFFILIATES, PARTNERS, REPRESENTATIVES, AGENTS, CONSULTANTS AND EMPLOYEES) IS SUBJECT TO THE TERMS AND CONDITIONS AGREED UPON BETWEEN SCHLUMBERGER AND THE COMPANY, INCLUDING: (a) RESTRICTIONS ON USE OF THE RECORDED-DATA; (b) DISCLAIMERS AND WAIVERS OF WARRANTIES AND REPRESENTATIONS REGARDING COMPANY'S USE OF AND RELIANCE UPON THE RECORDED-DATA; AND (c) CUSTOMER'S FULL AND SOLE RESPONSIBILITY FOR ANY INFERENCE DRAWN OR DECISION MADE IN CONNECTION WITH THE USE OF THIS RECORDED-DATA.

OTHER SERVICES1 OS1: N/A OS2: OS3: OS4: OS5:	OTHER SERVICES2 OS1: OS2: OS3: OS4: OS5:
REMARKS: RUN NUMBER 1	REMARKS: RUN NUMBER 2
LOG CORRELATED TO SLB LOG RAN ON 06-JAN-2010	
PLATFORM EXPRESS	
RAN ON SANDSTONE MATRIX	
ESTIMATED TOP OF CEMENT: 3500	

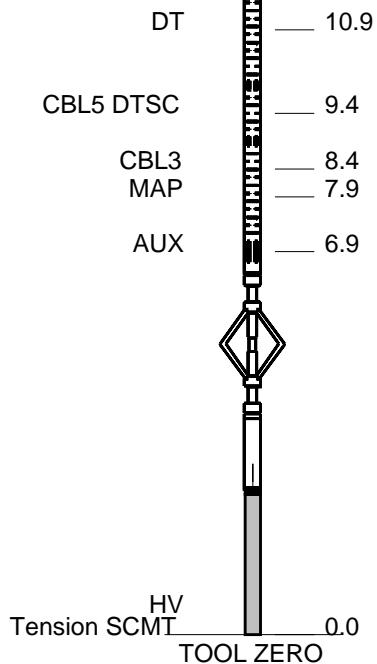
LOG RAN FROM PBTD– 4431– 3200					
MARKER JOINT 4075– 4094					
CREW: WILEY, NOE					
THANK YOU!					
RUN 1 SERVICE ORDER #: B9YV–00032 PROGRAM VERSION: 17C0–154 FLUID LEVEL: 0 ft			RUN 2 SERVICE ORDER #: PROGRAM VERSION: FLUID LEVEL:		
LOGGED INTERVAL	START	STOP	LOGGED INTERVAL	START	STOP

[illegible]

	RUN 1	RUN 2
1	1	1
2	1	1
3	1	1
4	1	1
5	1	1
6	1	1
7	1	1
8	1	1
9	1	1
10	1	1
11	1	1
12	1	1
13	1	1
14	1	1
15	1	1
16	1	1
17	1	1
18	1	1
19	1	1
20	1	1
21	1	1
22	1	1
23	1	1
24	1	1
25	1	1
26	1	1
27	1	1
28	1	1
29	1	1
30	1	1
31	1	1
32	1	1
33	1	1
34	1	1
35	1	1
36	1	1
37	1	1
38	1	1
39	1	1
40	1	1
41	1	1
42	1	1
43	1	1
44	1	1
45	1	1
46	1	1
47	1	1
48	1	1
49	1	1
50	1	1
51	1	1
52	1	1
53	1	1
54	1	1
55	1	1
56	1	1
57	1	1
58	1	1
59	1	1
60	1	1
61	1	1
62	1	1
63	1	1
64	1	1
65	1	1
66	1	1
67	1	1
68	1	1
69	1	1
70	1	1
71	1	1
72	1	1
73	1	1
74	1	1
75	1	1
76	1	1
77	1	1
78	1	1
79	1	1
80	1	1
81	1	1
82	1	1
83	1	1
84	1	1
85	1	1
86	1	1
87	1	1
88	1	1
89	1	1
90	1	1
91	1	1
92	1	1
93	1	1
94	1	1
95	1	1
96	1	1
97	1	1
98	1	1
99	1	1
100	1	1

WITM-A PSC_16MHZ	SURFACE EQUIPMENT	
---------------------	-------------------	--

DOWNHOLE EQUIPMENT			
MH-22			30.1
MH-22			
AH-38	Detail MT		28.6
	TelStatus		
	CTEM	28.3	28.3
PSPT			
PSC-A			
PSPT-A 1876			
PSTC-A			
PBMS-A			
10k Sapphire_Mano			
RTD_Thermometer			
GR	GR	24.6	
CCL			
PBMS			
	Well_Temp	21.5	
	Manometer	21.4	
	CCL	20.8	
	PBMS PSTC	20.0	
SCMT-CB			20.0
SCMC-CA 8213			
SECH-CA 8211			
CMIR-AG			
SCMS-CB 8258			
SCMX-CA 8213			



MAXIMUM STRING DIAMETER 1.69 IN
MEASUREMENTS RELATIVE TO TOOL ZERO
ALL LENGTHS IN FEET

Company: ENERPLUS RESOURCES (USA) CORPORATION

Well: BLACH 4-54-9-3

Output DLIS Files

DEFAULT

SCMT_PSP_008LUP

FN:7

PRODUCER

06-Apr-2010 10:17

OP System Version: 17C0-154

SCMT-CB

SRPC-3912-Q4_2009_OP17

PSPT

SRPC-3912-Q4_2009_OP17

PIP SUMMARY

Time Mark Every 60 S

Discriminated CCL
(CCLD)

-3.5 (V) 0.5

COLLARS
From CCLD to T1

MAIN PASS 0 PSI

GOOD BOND
From ACBL to GOBO

Transit Time (TT)
(US)

290 190

CBL Amplitude (CBL)
(MV)

0 100

Gamma Ray (GR)
(GAPI)

0 150

Tension
(TENS)
(LBF)

0 2000

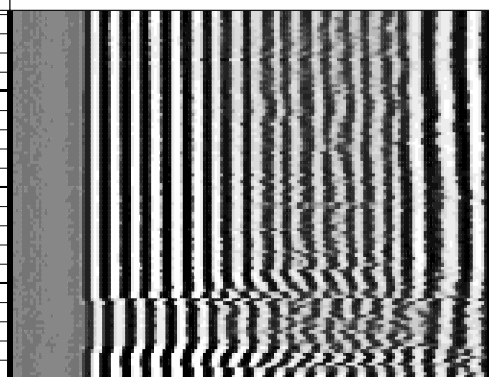
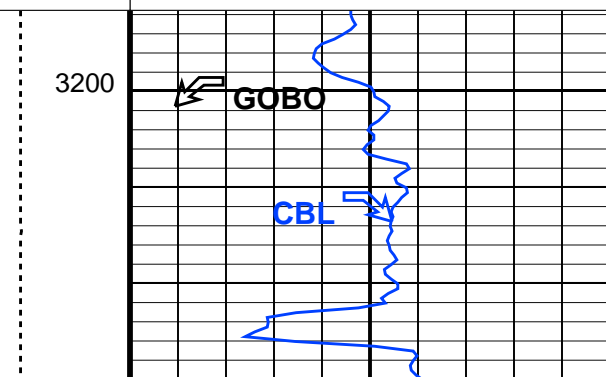
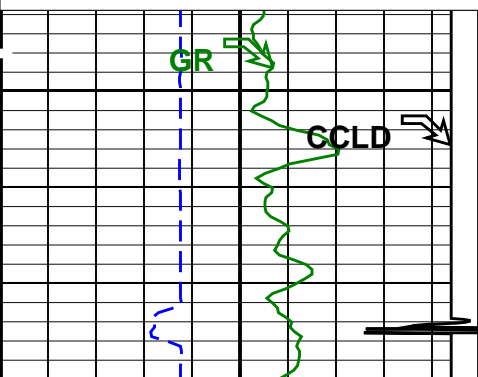
CBL Amplitude (CBL)
(MV)

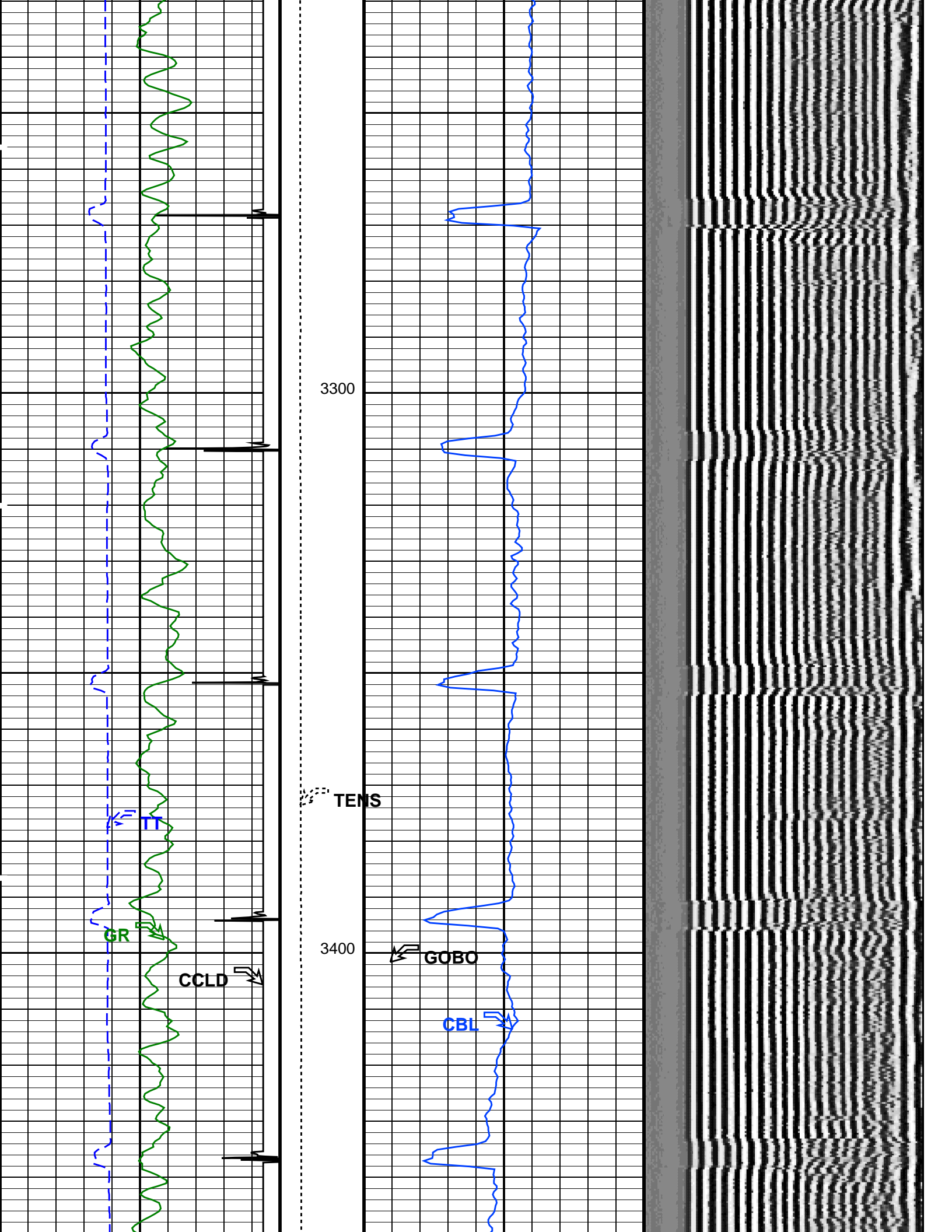
0 20

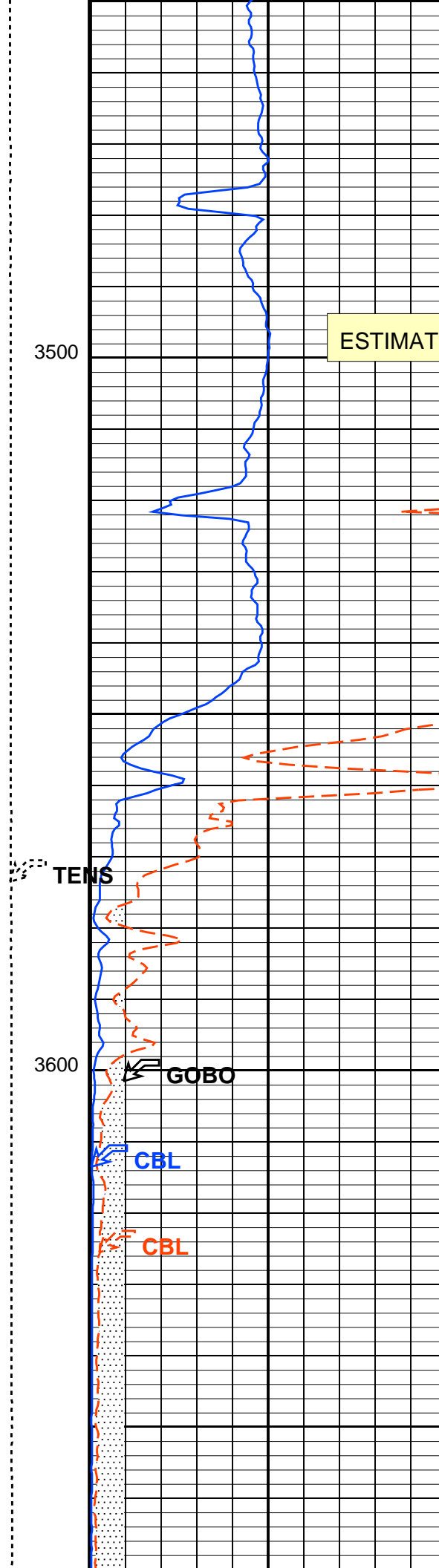
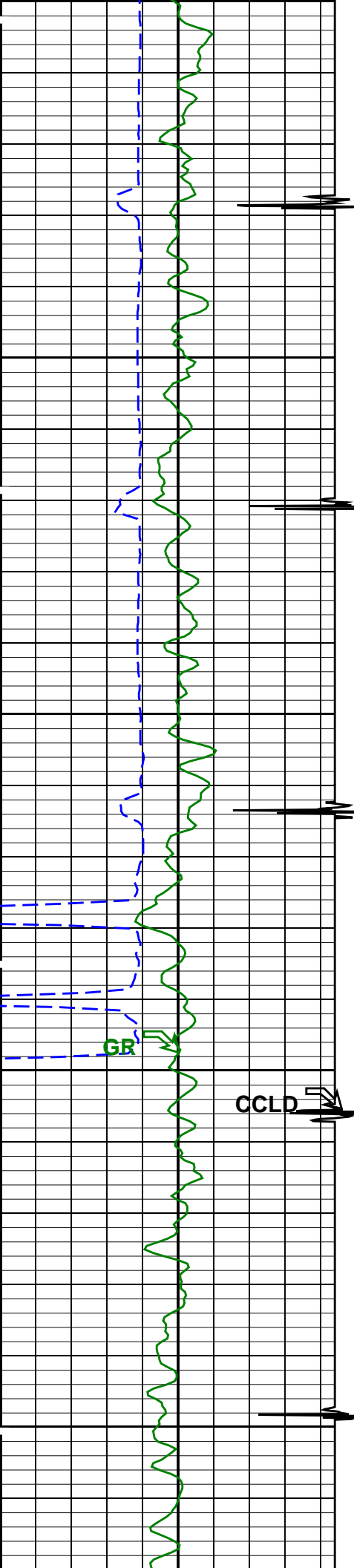
Min Amplitude Max

VDL VariableDensity (VDL)
(US)

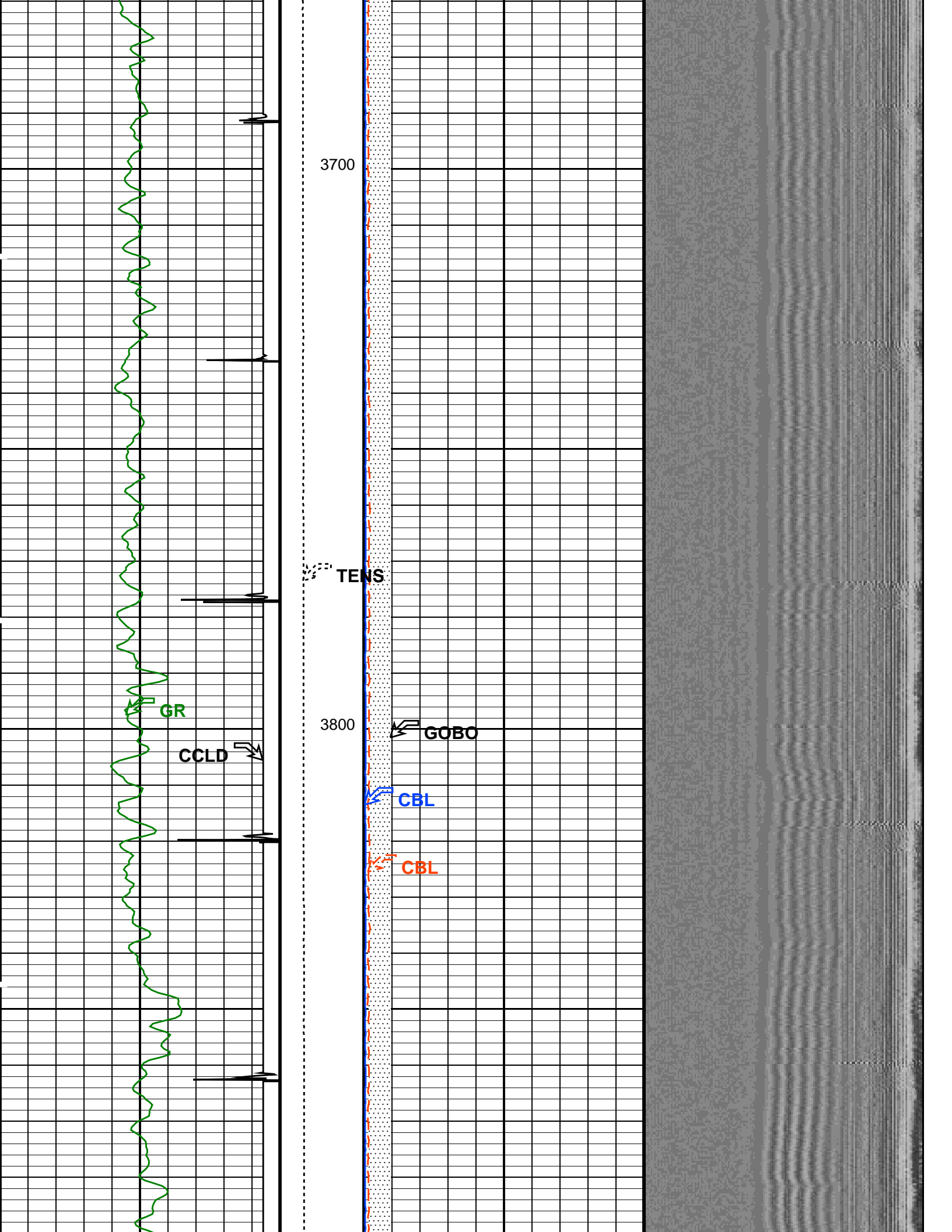
200 1200

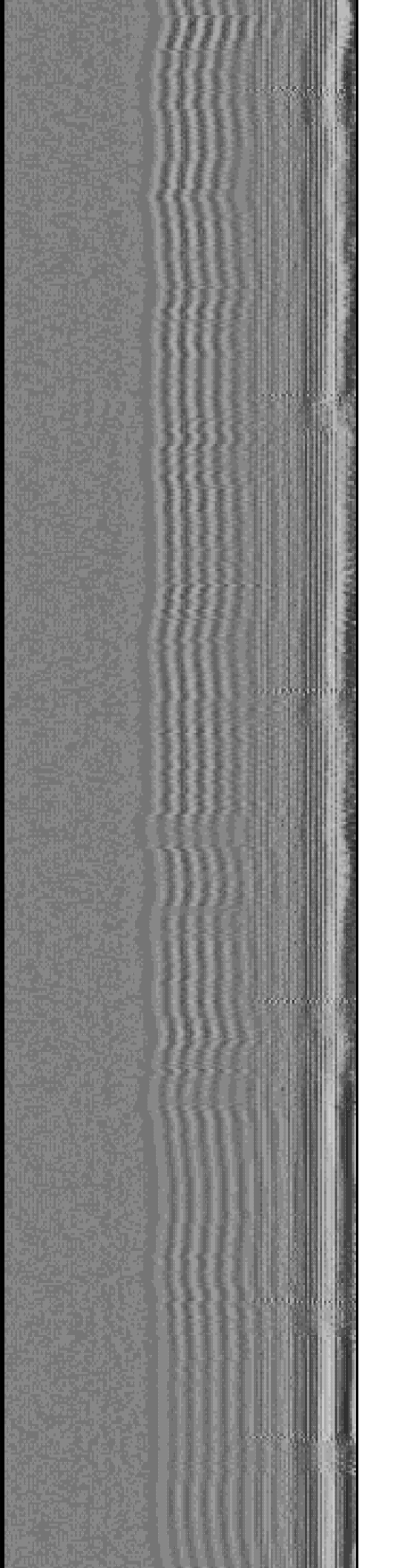
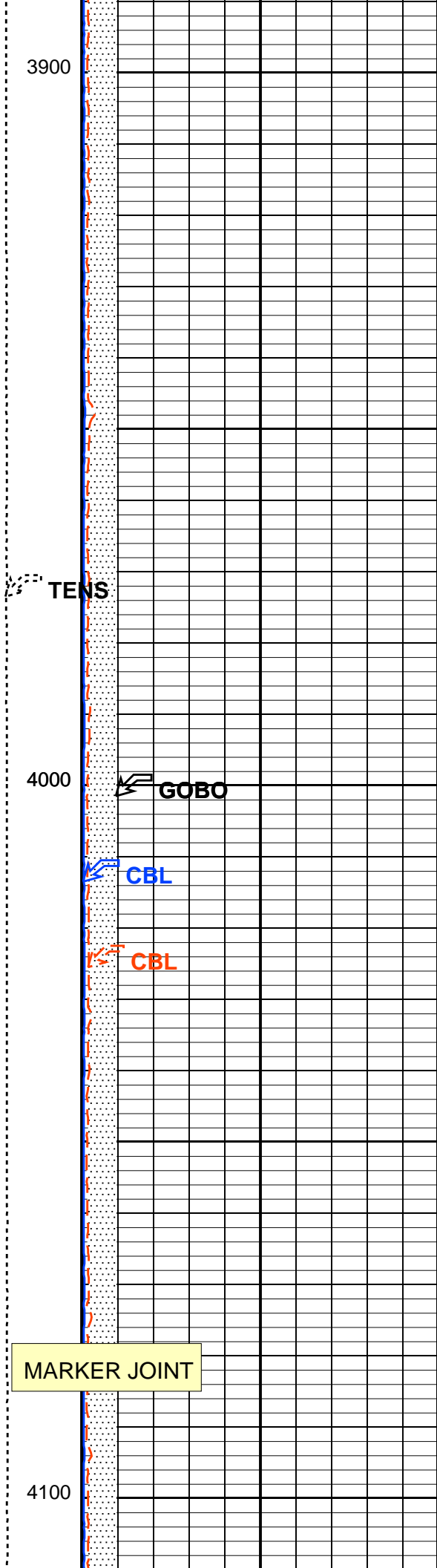
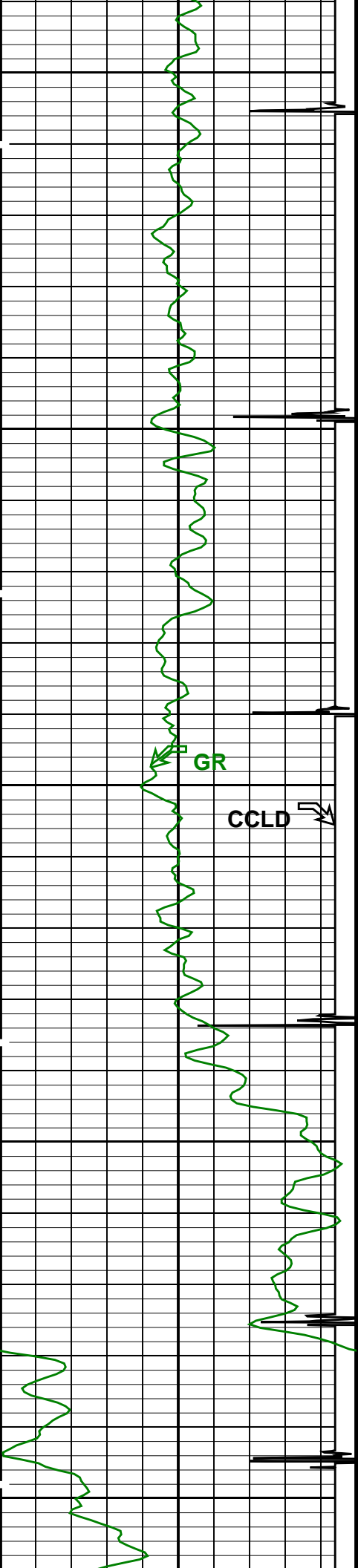


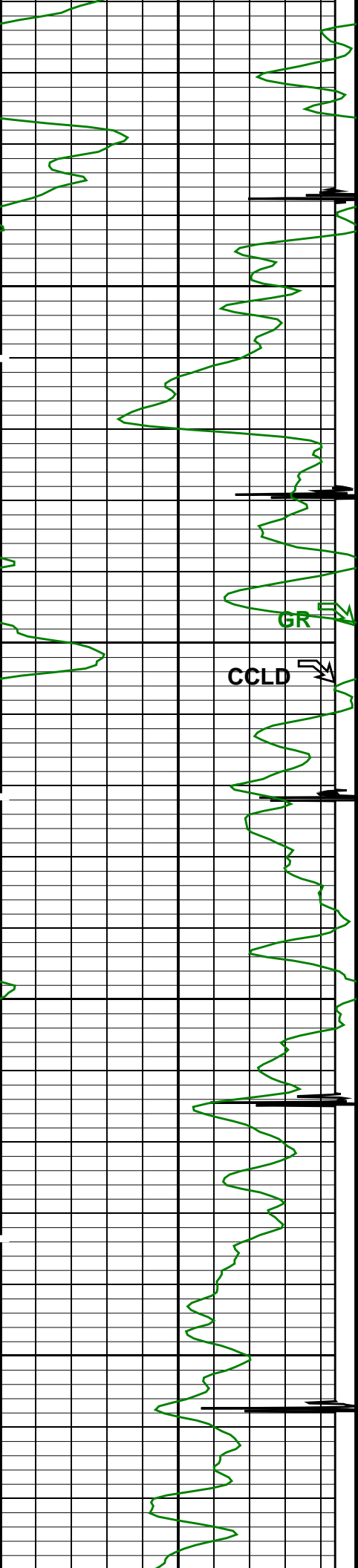




ESTIMATED TOC







TENS

4200

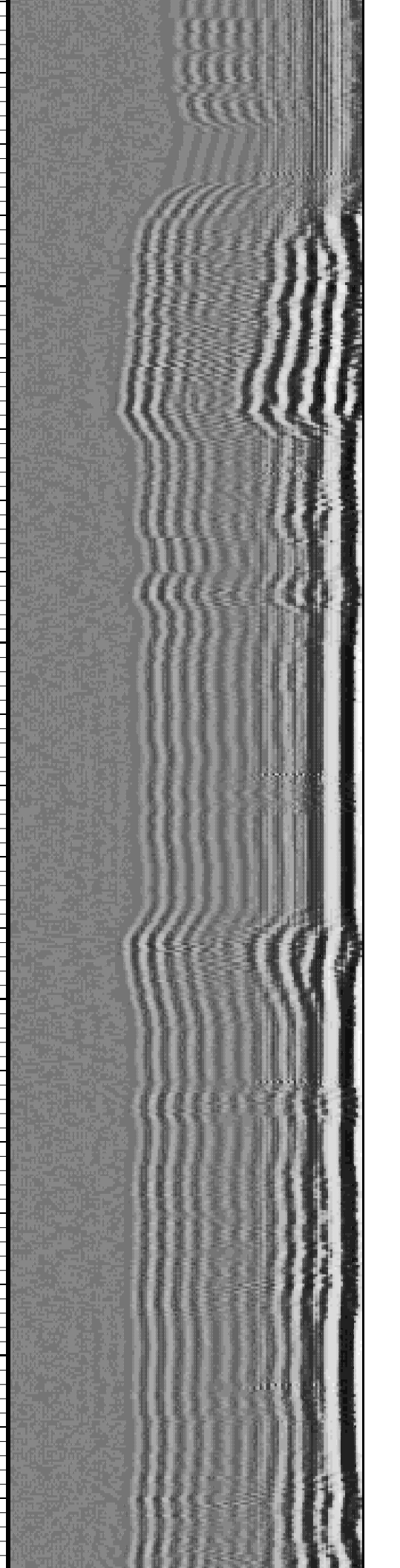
GOBO

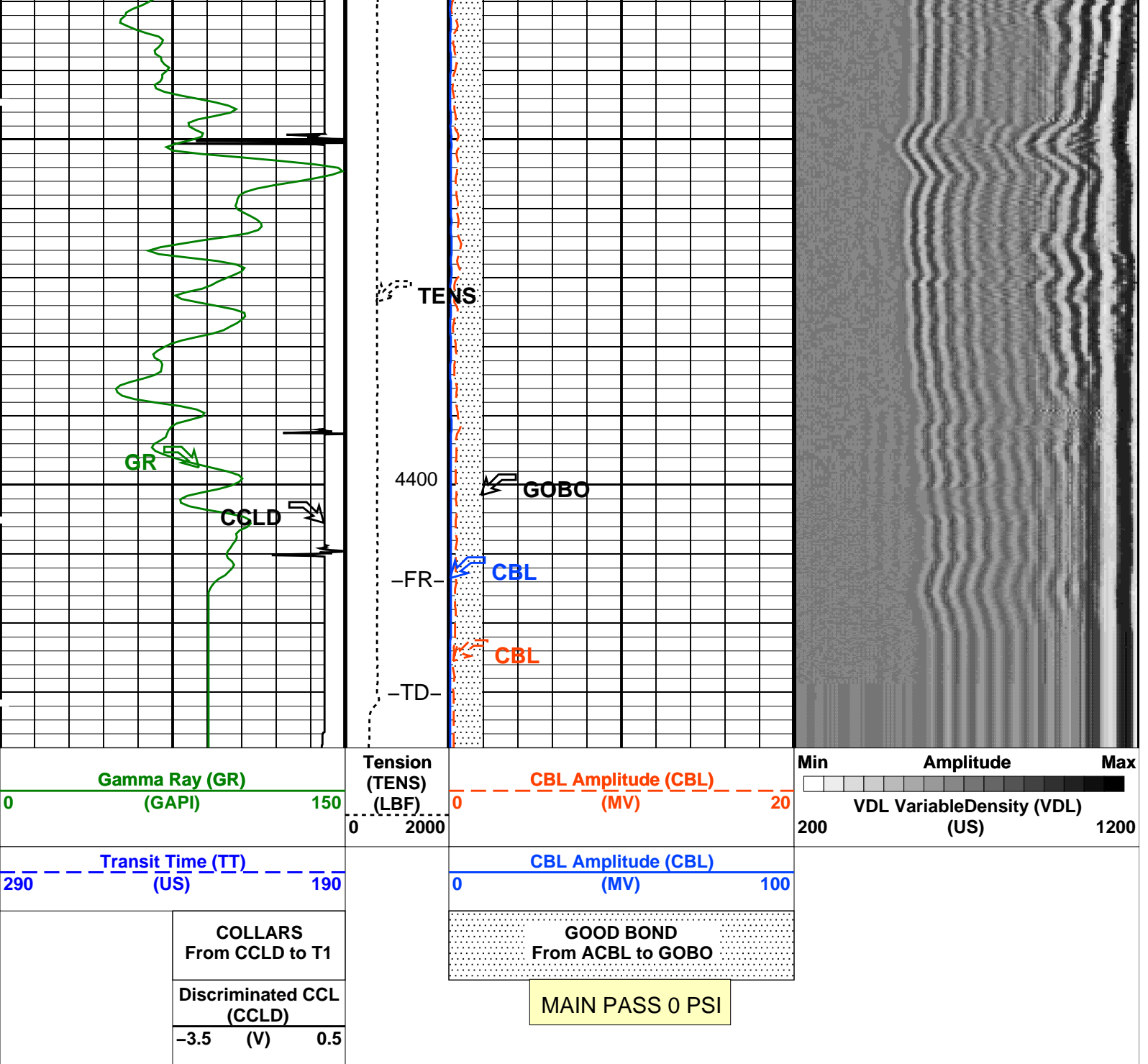
CCLD

CBL

CBL

4300





PIP SUMMARY

Time Mark Every 60 S

Parameters		
DLIS Name	Description	Value
SCMT-CB: Slim Cement Mapping Tool, 1-11/16 OD		
BILI	Bond Index Level for Zone Isolation	0.8
CB3D	SCMT CBL 3 ft Peak Detection Mode	PEAK
CB3G	SCMT CBL 3 ft Peak Detection T0_Delay and Noise Gate	229.39 US
CB3T	SCMT CBL 3 ft Fixed Threshold Level	20 MV
CB5D	SCMT CBL 5 ft Peak Detection Mode	PEAK
CB5G	SCMT CBL 5 ft Peak Detection T0_Delay and Noise Gate	343.39 US
CB5T	SCMT CBL 5 ft Fixed Threshold Level	20 MV
CBLG	CBL Gate Width	40 US
CBRA	CBL LQC Reference Amplitude in Free Pipe	79 MV
CMCF	CBL Cement Type Compensation Factor	1
CMTC	SCMT Slow Channel Multiplexer Mode	SCAN
CMTM	SCMT Operating Mode	LOG
CSCS	SCMT Slow Channel Index	VCC
CTHI	Casing Thickness	0.229988 IN
DTF	Delta-T Fluid	205 US/F
EATT	Acoustic Attenuation due to Fluid	0 DB/F

FATT	Acoustic Attenuation due to Fluid	1.00973	DB/F
FCF	CBL Fluid Compensation Factor	0.935163	MV
GOBO	Good Bond	PEAK	
MAPD	SCMT MAP Peak Detection Mode	172.39	US
MAPG	SCMT MAP Peak Detection T0_Delay and Noise Gate	30	MV
MAPT	SCMT MAP Fixed Threshold Level	18.4392	DB/F
MATT	Maximum Attenuation	1	
MCCF	MAP Cement Type Compensation Factor	1.25	FT
MCI	Minimum Cemented Interval for Isolation	2.90558	MV
MMSA	MAP Minimum Sonic Amplitude	0.308463	MV
MSA	Minimum Sonic Amplitude	OFF	
PEDE	Peak Detection On/Off Switch in Playback	5	
VDLG	VDL Manual Gain	6.8	MRAY
ZCMT	Acoustic Impedance of Cement		
System and Miscellaneous			
CSIZ	Current Casing Size	4.500	IN
CWEI	Casing Weight	10.50	LB/F
DFD	Drilling Fluid Density	8.34	LB/G
TD	Total Depth	-50000	FT

Format: CBL_VDL

Vertical Scale: 5" per 100'

Graphics File Created: 06-Apr-2010 10:17

OP System Version: 17C0-154			
SCMT-CB	SRPC-3912-Q4_2009_OP17	PSPT	SRPC-3912-Q4_2009_OP17
Output DLIS Files			
DEFAULT	SCMT_PSP_008LUP	FN:7	PRODUCER 06-Apr-2010 10:17

Company: ENERPLUS RESOURCES (USA) CORPORATION

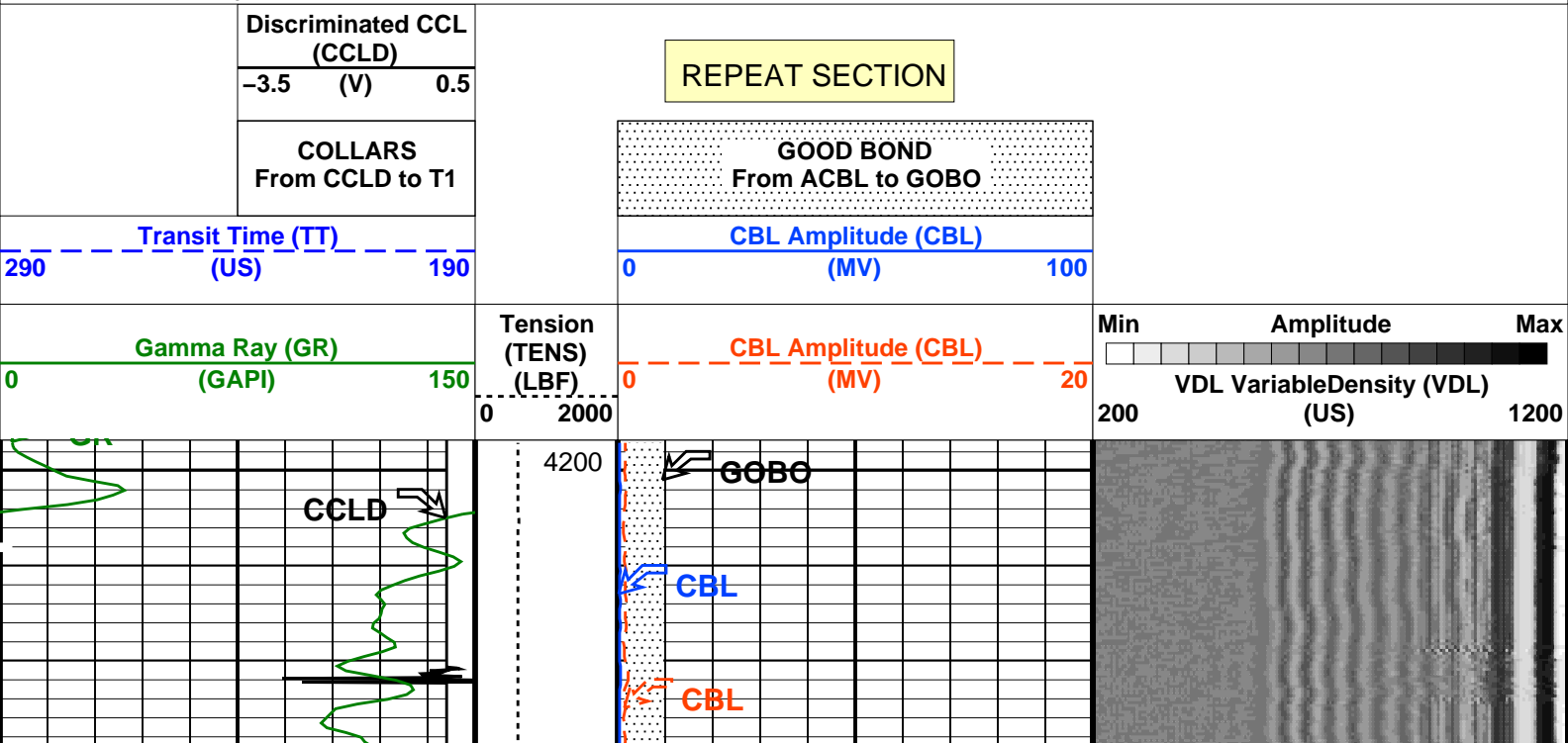
Well: BLACH 4-54-9-3

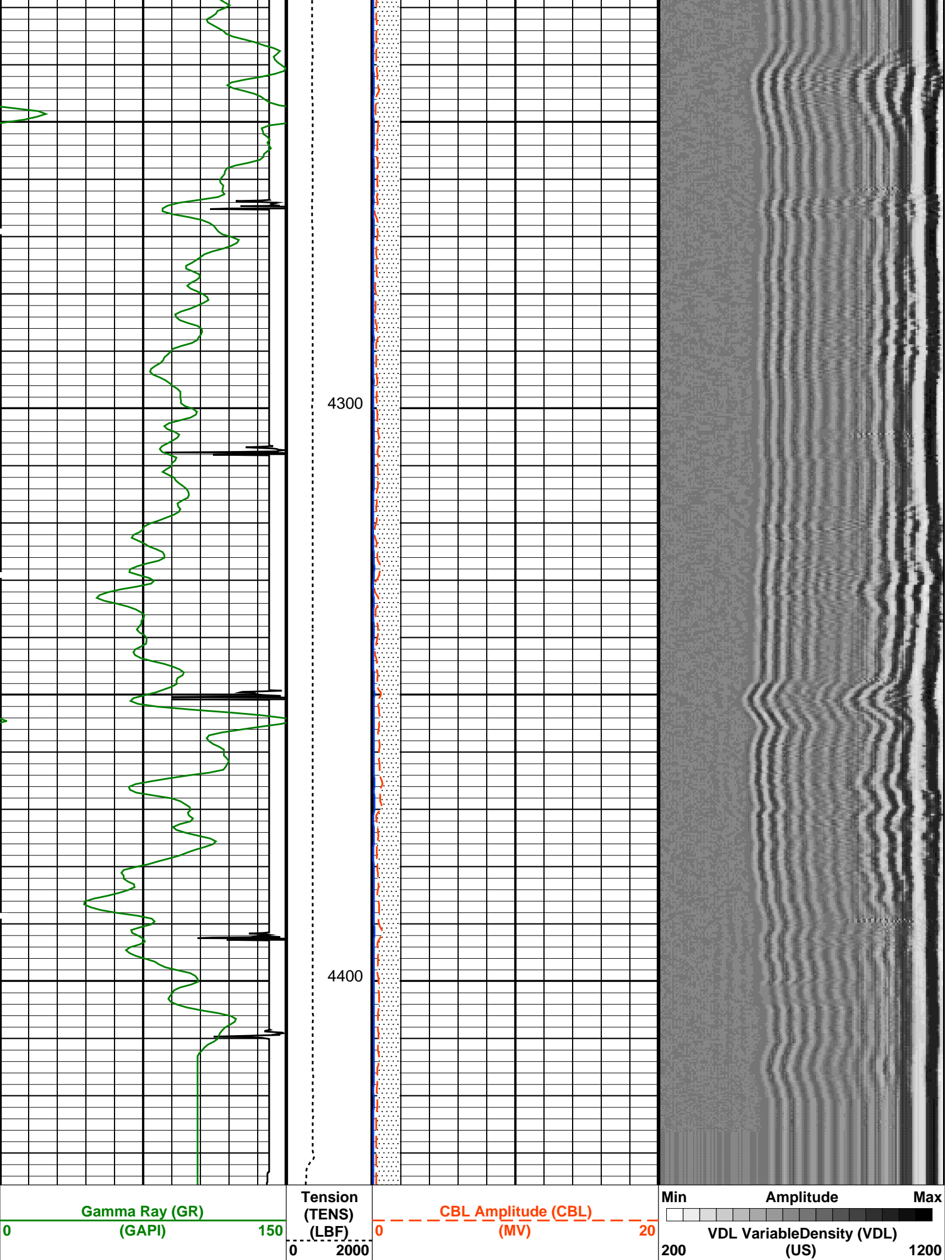
Input DLIS Files			
DEFAULT	SCMT_PSP_007LUP	FN:6	PRODUCER 06-Apr-2010 10:06 4437.5 FT 4198.5 FT
Output DLIS Files			
DEFAULT	SCMT_PSP_010PUP	FN:9	PRODUCER 06-Apr-2010 10:43 4435.5 FT 4196.5 FT

OP System Version: 17C0-154			
SCMT-CB	SRPC-3912-Q4_2009_OP17	PSPT	SRPC-3912-Q4_2009_OP17

PIP SUMMARY

Time Mark Every 60 S





Transit Time (TT)			CBL Amplitude (CBL)		
290	(US)	190	0	(MV)	100
COLLARS From CCLD to T1		GOOD BOND From ACBL to GOBO			
Discriminated CCL (CCLD)		REPEAT SECTION			
-3.5	(V)	0.5			

PIP SUMMARY

Time Mark Every 60 S

Parameters

DLIS Name	Description	Value	
SCMT-CB: Slim Cement Mapping Tool, 1-11/16 OD			
BILI	Bond Index Level for Zone Isolation	0.8	
CB3D	SCMT CBL 3 ft Peak Detection Mode	PEAK	
CB3G	SCMT CBL 3 ft Peak Detection T0_Delay and Noise Gate	229.39	US
CB3T	SCMT CBL 3 ft Fixed Threshold Level	20	MV
CB5D	SCMT CBL 5 ft Peak Detection Mode	PEAK	
CB5G	SCMT CBL 5 ft Peak Detection T0_Delay and Noise Gate	343.39	US
CB5T	SCMT CBL 5 ft Fixed Threshold Level	20	MV
CBLG	CBL Gate Width	40	US
CBRA	CBL LQC Reference Amplitude in Free Pipe	79	MV
CMCF	CBL Cement Type Compensation Factor	1	
CMTC	SCMT Slow Channel Multiplexer Mode	SCAN	
CMTM	SCMT Operating Mode	LOG	
CSCS	SCMT Slow Channel Index	VCC	
CTHI	Casing Thickness	0.229988	IN
DTF	Delta-T Fluid	205	US/F
FATT	Acoustic Attenuation due to Fluid	0	DB/F
FCF	CBL Fluid Compensation Factor	1.00973	
GOBO	Good Bond	0.935163	MV
MAPD	SCMT MAP Peak Detection Mode	PEAK	
MAPG	SCMT MAP Peak Detection T0_Delay and Noise Gate	172.39	US
MAPT	SCMT MAP Fixed Threshold Level	30	MV
MATT	Maximum Attenuation	18.4392	DB/F
MCCF	MAP Cement Type Compensation Factor	1	
MCI	Minimum Cemented Interval for Isolation	1.25	FT
MMSA	MAP Minimum Sonic Amplitude	2.90558	MV
MSA	Minimum Sonic Amplitude	0.308463	MV
PEDE	Peak Detection On/Off Switch in Playback	OFF	
VDLG	VDL Manual Gain	5	
ZCMT	Acoustic Impedance of Cement	6.8	MRAY
System and Miscellaneous			
CSIZ	Current Casing Size	4.500	IN
CWEI	Casing Weight	10.50	LB/F
DFD	Drilling Fluid Density	8.34	LB/G
DO	Depth Offset for Playback	-2.0	FT
PP	Playback Processing	NORMAL	
TD	Total Depth	-50000	FT

Format: CBL_VDL Vertical Scale: 5" per 100' Graphics File Created: 06-Apr-2010 10:43

OP System Version: 17C0-154

SCMT-CB SRPC-3912-Q4_2009_OP17 PSPT SRPC-3912-Q4_2009_OP17

Input DLIS Files

DEFAULT SCMT_PSP_007LUP FN:6 PRODUCER 06-Apr-2010 10:06 4437.5 FT 4198.5 FT

Output DLIS Files

DEFAULT SCMT_PSP_010PUP FN:9 PRODUCER 06-Apr-2010 10:43

Company: ENERPLUS RESOURCES (USA) CORPORATION

Schlumberger

Well: BLACH 4-54-9-33

Field: WILDCAT

Field: **WILDCAT**
County: **WASHINGTON**
State: **COLORADO**

CEMENT BOND LOG
GAMMA RAY
CASING COLLAR LOG