

# Well Location Plat Dixon Well B6

Northwest Corner Sec.15  
Stone Monument 17" WC

North 1/4 Corner Sec.15  
Aluminum Cap L.S. No. 24303

Northeast Corner Sec. 15  
Garfield County Brass Cap

NE 1/4  
SEC. 15

**Note:** Improvements Do Not Exist  
Within 200' of Well Site.

Current Surface Land Use :  
Open Range Land

**SEC. 15**  
**T,6S., R92 W.**



Graphic Scale in Feet  
1"= 1000'

## Legend

- Field Surveyed Section Corner
- Field Surveyed Quarter Corner
- Calculated Section Corner Location
- Field Surveyed 1/4 Corner

## Bottom Hole: Dixon B6

1806' FSL

1964' FWL

**NAD83**

Lat: 39.524756061°N

Long: 107.655509584°W

**NAD27**

Lat: 39.524775501°N

Long: 107.654894800°W

## Surface: Dixon B6

1581' FSL

762' FWL

Gnd El= 5513.0

Pad El= 5520.0

**NAD83**

Lat: 39.524116849°N

Long: 107.659764120°W

**NAD27**

Lat: 39.524136293°N

Long: 107.659149188°W

UTM 13 NORTH

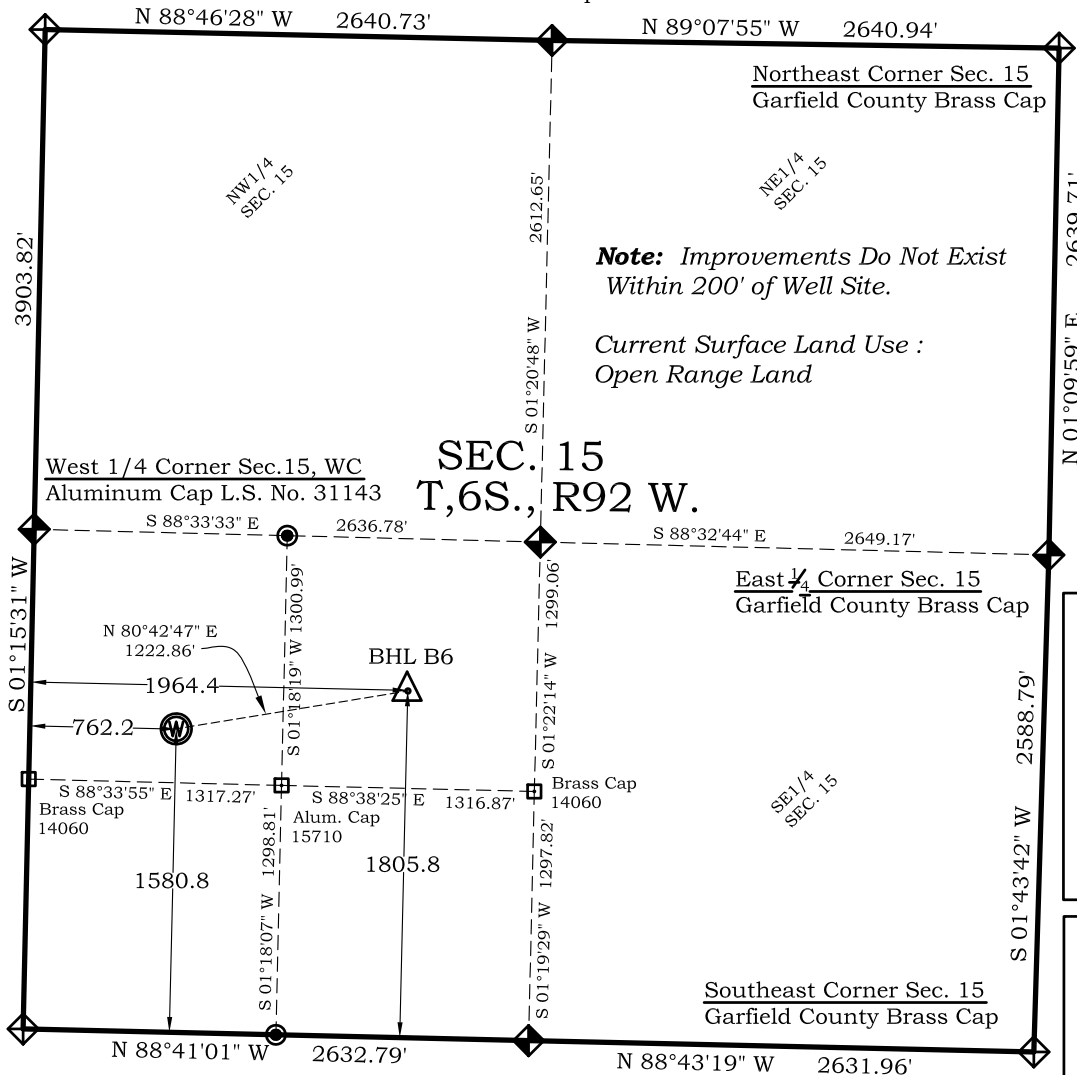
**NAD 1983**

NORTHING

14364536.264

EASTING

890350.526



Southwest Corner Sec.15  
Aluminum Cap L.S. No. 19598

South 1/4 Corner Sec.15  
Brass Cap L.S. No. 14060

**Prepared For Antero Resources**

**Proposed Dixon B6 Well Situate in The NW 1/4 SW 1/4 Section 15, Township 6 South, Range 92 West of the 6 th. Principal Meridian, County of Garfield, State of Colorado**

## SURVEYOR'S CERTIFICATE

I, SCOTT E. AIBNER, A REGISTERED LAND SURVEYOR, LICENSED UNDER THE LAWS OF THE STATE OF COLORADO DO HEREBY CERTIFY THAT THE SURVEY SHOWN HEREON WAS PREPARED BY RIVER VALLEY SURVEY, INC., FOR ANTERO RESOURCES, BY ME OR UNDER MY DIRECT SUPERVISION AND THAT THIS PLAT IS A TRUE REPRESENTATION THEREOF.

BY:   
SCOTT E. AIBNER, COLORADO REG. NO. 31143

## Notes:

- 1.) LATITUDE AND LONGITUDE COORDINATES ARE DIFFERENTIALLY CORRECTED AND BASED ON PUBLISHED NGS CONTROL STATION "WDP-5".
- 2.) ELEVATIONS ARE BASED ON NAVD OF 1929.
- 3.) ALL BOTTOM AND TOP HOLE LOCATIONS ARE MEASURED 90 DEGREES FROM SECTION LINE.
- 4.) USGS QUADRANGLE MAP "SILT CO".
- 5.) CURRENT SURFACE LAND USE: OPEN RANGELAND
- 6.) PDOP AT THE TIME OF LOCATION OF SURFACE WELL = 1.4



**River Valley Survey, Inc.**  
110 East 3rd. Street, Suite 207  
Rifle, Colorado 81650  
Ph: 970-379-7846

**Project:** Dixon B Pad

**Proj. No.** 06001-07

**Field Date:** 09-28-07

**Scale:** 1"= 1000'

**Date:** 01-05-11

**Sheet:** 1 of 8

**Well Location Plat**  
**Prepared For Antero Resources**

**Situate In:**  
NW1/4SW1/4 Section 15, T6S., R. 92  
W. of the 6th P.M., Garfield County,  
Colorado

