

Well Location Plat Dixon Well B1

Northwest Corner Sec.15
Stone Monument 17' WC

North 1/4 Corner Sec.15
Aluminum Cap L.S. No. 24303

Northeast Corner Sec. 15
Garfield County Brass Cap



Graphic Scale in Feet
1"= 1000'

Legend

- ◆ - Field Surveyed Section Corner
- ◆ - Field Surveyed Quarter Corner
- ⊙ - Calculated Section Corner Location
- ⊠ - Field Surveyed 1/6 Corner

Note: Improvements Do Not Exist
Within 200' of Well Site.

Current Surface Land Use :
Open Range Land

SEC. 15
T,6S., R92 W.

West 1/4 Corner Sec.15, WC
Aluminum Cap L.S. No. 31143

East 1/4 Corner Sec. 15
Garfield County Brass Cap

Bottom Hole: Dixon B1

2481' FSL

690' FWL

NAD83

Lat: 39.526586056°N

Long: 107.660042375°W

NAD27

Lat: 39.526605501°N

Long: 107.659427400°W

Surface: Dixon B1

1586' FSL

743' FWL

Gnd El= 5513.0

Pad El= 5520.0

NAD83

Lat: 39.524129843°N

Long: 107.659832985°W

NAD27

Lat: 39.524149286°N

Long: 107.659218050°W

UTM 13 NORTH

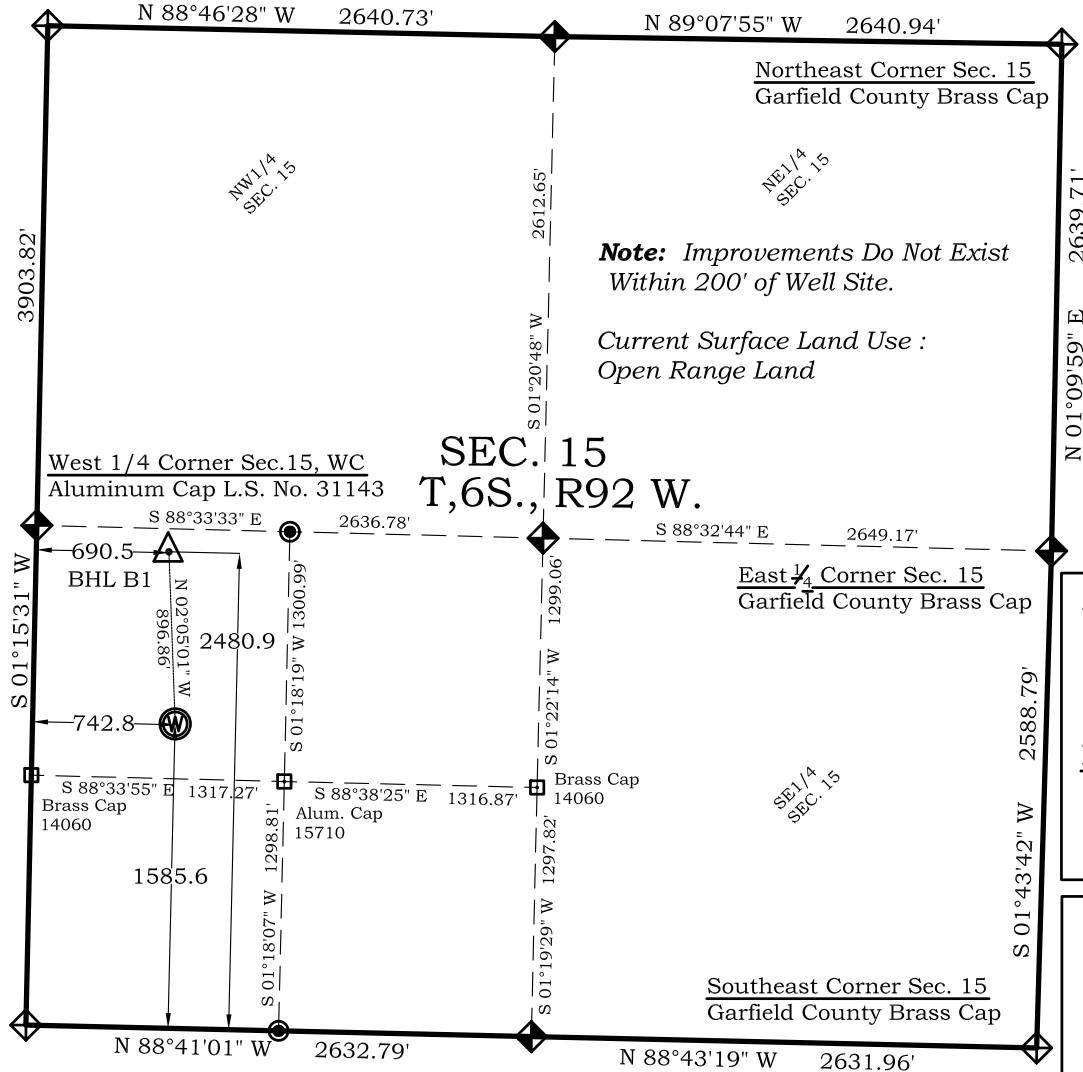
NAD 1983

NORTHING

14364541.570

EASTING

890331.242



Southwest Corner Sec.15
Aluminum Cap L.S. No. 19598

South 1/4 Corner Sec.15
Brass Cap L.S. No. 14060

Southeast Corner Sec. 15
Garfield County Brass Cap

Prepared For Antero Resources

Proposed Dixon B1 Well Situate in The NW 1/4 SW 1/4 Section
15, Township 6 South, Range 92 West of the 6 th. Principal
Meridian, County of Garfield, State of Colorado

SURVEYOR'S CERTIFICATE

I, SCOTT E. AIBNER, A REGISTERED LAND SURVEYOR, LICENSED UNDER THE LAWS
OF THE STATE OF COLORADO DO HEREBY CERTIFY THAT THE SURVEY SHOWN
HEREON WAS PREPARED BY RIVER VALLEY SURVEY, INC., FOR ANTERO
RESOURCES, BY ME OR UNDER MY DIRECT SUPERVISION AND THAT THIS PLAT IS
A TRUE REPRESENTATION THEREOF.

BY:

SCOTT E. AIBNER, COLORADO REG. NO. 31143

Notes:

- 1.) LATITUDE AND LONGITUDE COORDINATES ARE DIFFERENTIALLY CORRECTED AND BASED ON PUBLISHED NGS CONTROL STATION "WDP-5".
- SYSTEM: UTM ZONE: 13 NORTH DATUM: NAD 1983 (CONUS)
- 2.) ELEVATIONS ARE BASED ON NAVD OF 1929.
- 3.) ALL BOTTOM AND TOP HOLE LOCATIONS ARE MEASURED 90 DEGREES FROM SECTION LINE.
- 4.) USGS QUADRANGLE MAP "SILT CO".
- 5.) CURRENT SURFACE LAND USE: OPEN RANGELAND
- 6.) PDOP AT THE TIME OF LOCATION OF SURFACE WELL = 1.4



River Valley Survey, Inc.
110 East 3rd. Street, Suite 207
Rifle, Colorado 81650
Ph: 970-379-7846

Project: Dixon B Pad

Proj. No. 06001-07

Field Date: 11-15-06

Scale: 1"= 1000'

Date: 01-05-11

Sheet: 1 of 8

Well Location Plat
Prepared For Antero Resources

Situate In:
NW1/4SW1/4 Section 15, T6S., R. 92
W. of the 6th P.M., Garfield County,
Colorado

