

**OXY GRAND JUNCTION EBUSINESS
DO NOT MAIL
BROWNFIELD, Texas**

CC
CC 697-16-02B

OXY/H&P/330

Post Job Summary **Cement Surface Casing**

Prepared for:
Date Prepared:
Version: 1

Service Supervisor: SMITH, DUSTIN

Submitted by:

HALLIBURTON

The Road to Excellence Starts with Safety

Sold To #: 344034	Ship To #: 2790050	Quote #:	Sales Order #: 7441750
Customer: OXY GRAND JUNCTION EBUSINESS	Customer Rep: Benevides, Simon		
Well Name: CC	Well #: 697-16-02B	API/UWI #: 05-045-17572	
Field: GRAND VALLEY	City (SAP): PARACHUTE	County/Parish: Garfield	State: Colorado
Lat: N 39.531 deg. OR N 39 deg. 31 min. 50.326 secs.	Long: W 108.233 deg. OR W -109 deg. 46 min. 0.574 secs.		
Contractor: OXY	Rig/Platform Name/Num: H&P 330		
Job Purpose: Cement Surface Casing			
Well Type: Development Well	Job Type: Cement Surface Casing		
Sales Person: DUNNING, DUSTIN	Srvc Supervisor: SMITH, DUSTIN	MBU ID Emp #: 418015	

Job Personnel

HES Emp Name	Exp Hrs	Emp #	HES Emp Name	Exp Hrs	Emp #	HES Emp Name	Exp Hrs	Emp #
BORSZICH, STEPHEN	32	412388	SLAUGHTER, JESSE Dean	32	454315	SMITH, DUSTIN Michael	32	418015
TRIPLETT, MICHEAL Anthony	32	447908	YOUNG, JEREMY R	32	418013			

Equipment

HES Unit #	Distance-1 way	HES Unit #	Distance-1 way	HES Unit #	Distance-1 way	HES Unit #	Distance-1 way
10000394	120 mile	10296152C	120 mile	10713212	120 mile	10722398	120 mile
10741123	120 mile	10856450	120 mile	10856464	120 mile	10867531	120 mile
10897797	120 mile	10989685	120 mile	11139330	120 mile	11259882	120 mile

Job Hours

Date	On Location Hours	Operating Hours	Date	On Location Hours	Operating Hours	Date	On Location Hours	Operating Hours
06/17/10	16.5	7	06/18/10	15.5	4			
TOTAL			Total is the sum of each column separately					

Job

Formation Name	Formation Depth (MD)	Top	Bottom	Form Type	Job depth MD	Job Depth TVD	Water Depth	Perforation Depth (MD)	From	To	Called Out	Date	Time	Time Zone
				BHST	2730. ft	2688. ft		Wk Ht Above Floor		5. ft	On Location	17 - Jun - 2010	07:30	MST
											Job Started	17 - Jun - 2010	15:41	MST
											Job Completed	18 - Jun - 2010	13:30	MST
											Departed Loc	18 - Jun - 2010	15:30	MST

Well Data

Description	New / Used	Max pressure psig	Size in	ID in	Weight lbm/ft	Thread	Grade	Top MD ft	Bottom MD ft	Top TVD ft	Bottom TVD ft
-------------	------------	-------------------	---------	-------	---------------	--------	-------	-----------	--------------	------------	---------------

Sales/Rental/3rd Party (HES)

Description	Qty	Qty uom	Depth	Supplier
PLUG,CMTG,TOP,9 5/8,HWE,8.16 MIN/9.06 MA	1	EA		
R/A DENSOMETER W/CHART RECORDER,/JOB,ZI	1	JOB		
PORT. DATA ACQUIS. W/OPTICEM RT W/HES	1	EA		
ADC (AUTO DENSITY CTRL) SYS, /JOB,ZI	1	JOB		

Tools and Accessories

Type	Size	Qty	Make	Depth	Type	Size	Qty	Make	Depth	Type	Size	Qty	Make
Guide Shoe					Packer					Top Plug	9 5/8	1	
Float Shoe					Bridge Plug					Bottom Plug			
Float Collar					Retainer					SSR plug set			
Insert Float										Plug Container	9 5/8	1	
Stage Tool										Centralizers			

Miscellaneous Materials

Gelling Agt	Conc	Surfactant	Conc	Acid Type	Qty	Conc	%
Treatment Fld	Conc	Inhibitor	Conc	Sand Type	Size	Qty	

Fluid Data									
Stage/Plug #: 1									
Fluid #	Stage Type	Fluid Name	Qty	Qty uom	Mixing Density lbm/gal	Yield ft ³ /sk	Mix Fluid Gal/sk	Rate bbl/min	Total Mix Fluid Gal/sk
1	WATER SPACER		20.00	bbl	8.33	.0	.0	5.0	
2	SUPER FLUSH 101	SUPER FLUSH 101 - SBM (12199)	20.00	bbl	10.	.0	.0	5.0	
3	WATER SPACER		20.00	bbl	.	.0	.0	5.0	
4	Lead Cement	VERSACEM (TM) SYSTEM (452010)		sacks	12.3	2.33	12.62	6.5	12.62
	12.62 Gal	FRESH WATER							
5	Tail Cement	VERSACEM (TM) SYSTEM (452010)	160.0	sacks	12.8	2.07	10.67	6.5	10.67
	10.67 Gal	FRESH WATER							
6	DISPLACEMENT		203.7	bbl	.	.0	.0	6.0	
7	Top Out Cement	VARICEM (TM) CEMENT (452009)	513	sacks	14.	1.78	7.67	2.5	7.67
	7.67 Gal	FRESH WATER							
Calculated Values		Pressures		Volumes					
Displacement	203.7	Shut In: Instant		Lost Returns	912	Cement Slurry	649	Pad	
Top Of Cement	SURFACE	5 Min		Cement Returns	10	Actual Displacement		Treatment	
Frac Gradient		15 Min		Spacers	60	Load and Breakdown		Total Job	
Rates									
Circulating		Mixing		Displacement		Avg. Job			
Cement Left In Pipe	Amount	53.00 ft	Reason	Shoe Joint					
Frac Ring # 1 @	ID	Frac ring # 2 @	ID	Frac Ring # 3 @	ID	Frac Ring # 4 @	ID		
The Information Stated Herein Is Correct				Customer Representative Signature					

The Road to Excellence Starts with Safety

Sold To #: 344034	Ship To #: 2790050	Quote #:	Sales Order #: 7441750
Customer: OXY GRAND JUNCTION EBUSINESS	Customer Rep: Benevides, Simon		
Well Name: CC	Well #: 697-16-02B	API/UWI #: 05-045-17572	
Field: GRAND VALLEY	City (SAP): PARACHUTE	County/Parish: Garfield	State: Colorado
Legal Description:			
Lat: N 39.531 deg. OR N 39 deg. 31 min. 50.326 secs.		Long: W 108.233 deg. OR W -109 deg. 46 min. 0.574 secs.	
Contractor: OXY	Rig/Platform Name/Num: H&P 330		
Job Purpose: Cement Surface Casing			Ticket Amount:
Well Type: Development Well	Job Type: Cement Surface Casing		
Sales Person: DUNNING, DUSTIN	Srvc Supervisor: SMITH, DUSTIN	MBU ID Emp #: 418015	

Activity Description	Date/Time	Cht #	Rate bbl/min	Volume bbl		Pressure psig		Comments
				Stage	Total	Tubing	Casing	
Call Out	06/17/2010 03:30							ELITE # 9
Depart Yard Safety Meeting	06/17/2010 04:50							ALL HES EMPLOYEES
Arrive At Loc	06/17/2010 07:30							TRANSPORT ON LOCATION FOR 13 HOURS
Assessment Of Location Safety Meeting	06/17/2010 07:45							ALL HES EMPLOYEES
Pre-Rig Up Safety Meeting	06/17/2010 08:00							ALL HES EMPLOYEES
Rig-Up Equipment	06/17/2010 08:30							1 F-550 PICKUP 1 HT-400 PUMP TRUCK 1 SUPER FLUSH TRANSPORT 2 FIELD STORAGE BINS
Pre-Job Safety Meeting	06/17/2010 15:20							ALL HES EMPLOYEES AND RIG CREW
Rig-Up Completed	06/17/2010 15:35							RIG CIRCULATED FOR 1 HOUR PRIOR TO JOB
Start Job	06/17/2010 15:41							TD: 2730 TP: 2688 SJ: 53 MUD 8.8 9 5/8 36 # J-55 CSG 14 3/4 OH
Test Lines	06/17/2010 15:43					2500.0		PRESSURE TEST OK
Pump Spacer 1	06/17/2010 15:49		6	20	20		120.0	FRESH WATER
Pump Spacer 2	06/17/2010 15:52		6	20	20		175.0	SUPERFLUSH 101
Pump Spacer 1	06/17/2010 15:57		6	20	20		120.0	FRESH WATER
Pump Lead Cement	06/17/2010 16:04		6.5	514.6	514.6		210.0	1240 SKS 12.3 PPG 2.33 YIELD 12.62 GAL/SK

Sold To #: 344034

Ship To #: 2790050

Quote #:

Sales Order #:

7441750

SUMMIT Version: 7.20.130

Friday, June 18, 2010 02:30:00

Cementing Job Log

Activity Description	Date/Time	Cht #	Rate bbl/ min	Volume bbl		Pressure psig		Comments
				Stage	Total	Tubing	Casing	
Pump Tail Cement	06/17/2010 17:35		6.5	58.9	58.9		260.0	160 SKS 12.8 PPG 2.07 YIELD 10.67 GAL/SK
Shutdown	06/17/2010 17:46							
Drop Plug	06/17/2010 17:46							PLUG AWAY NO PROBLEMS
Pump Displacement	06/17/2010 17:47		6	203.7	203.7		420.0	FRESH WATER
Slow Rate	06/17/2010 18:19		2	183.7	183.7		300.0	
Bump Plug	06/17/2010 18:25		2	203.7	203.7		820.0	BUMPED PLUG TO 820 PSI THEN BUMPED UP TO 1500 PSI TO TEST CASING HELD PRESSURE FOR 30 MINUTES
Check Floats	06/17/2010 19:02							FLOATS HELD
Other	06/17/2010 19:32							10 BBLS SUGAR WATER TO CLEAR PARASITE STRING
End Job	06/17/2010 19:41							NO CIRCULATION THROUGHOUT JOB NO PIPE MOVEMENT DURING JOB NO CEMENT TO SURFACE
Start Job	06/17/2010 21:14							
Other	06/17/2010 21:14		2	1	1			FILL LINES
Pump Cement	06/17/2010 21:22		2.5	55.5	69.5	80.0		175 SKS 14.0 PPG 1.78 YIELD 7.67 GAL/SK
Clean Lines	06/17/2010 21:52		2.5	3	3			CLEAR LINES
End Job	06/17/2010 21:54							NO CEMENT TO SURFACE WAIT FOR NEXT TOP OUT
Start Job	06/18/2010 00:49							
Other	06/18/2010 00:49		1	1	1			FILL LINES
Pump Cement	06/18/2010 00:57		2	55.5	81	69.0		175 SKS 14.0 PPG 1.78 YIELD 7.67 GAL/SK
Clean Lines	06/18/2010 01:39		2	3	3			CLEAR LINES
End Job	06/18/2010 01:39							NO CEMENT TO SURFACE WAIT FOR NEXT TOP OUT

Sold To # : 344034

Ship To # : 2790050

Quote # :

Sales Order # : 7441750

SUMMIT Version: 7.20.130

Friday, June 18, 2010 02:30:00

Cementing Job Log

Activity Description	Date/Time	Cht #	Rate bbl/ min	Volume bbl		Pressure psig		Comments
				Stage	Total	Tubing	Casing	
Other	06/18/2010 03:30							WENT TO SPOT NEXT TOP OUT TRUCK NOTICED ANTIFREEZE ON GROUND FROM PONY MOTOR ON PUMP TRUCK CALLED FOR PUMP TRUCK 2ND PUMP TRUCK ARRIVED ON LOCATION @ 0630 ELITE # 6
Start Job	06/18/2010 07:37							TOP OUT # 3
Other	06/18/2010 07:38		1	1	1			FILL LINES
Pump Cement	06/18/2010 07:38		2.5	43.4	53	65.0		137 SKS 14.0 PPG 1.78 YIELD 7.67 GAL/SK
Clean Lines	06/18/2010 07:59		2.5	3	3			LINES CLEAR
End Job	06/18/2010 08:26							CEMENT TO SURFACE FELL BACK TOPPED OFF AGAIN CEMENT HOLDING AT SURFACE WILL WAIT 4 HOURS
Start Job	06/18/2010 10:41							TOP OUT #4
Other	06/18/2010 10:41		1	1	1			FILL LINES
Pump Cement	06/18/2010 10:42		2	8.2	8.2	32.0		25.9 SKS 14.0 PPG 1.78 YIELD 7.67 GAL/SK
Clean Lines	06/18/2010 10:53		3	3	3			LINES CLEAR
End Job	06/18/2010 10:55							CEMENT TO SURFACE HOLDING AT SURFACE 10 BBLS CEMENT TO SURFACE 111 SKS TOPOUT ON ONE 660 AND 274 SKS TOPOUT ON 2ND 660 ALL PAID FOR 10 BOXES TUFF FIBER ON LOCATION PAID FOR
Activity Description	Date/Time	Cht	Rate bbl/ min	Volume bbl		Pressure psig		Comments

Sold To # : 344034

Ship To # : 2790050

Quote # :

Sales Order # : 7441750

SUMMIT Version: 7.20.130

Fridav. June 18. 2010 02:30:00

Cementing Job Log

		#		Stage	Total	Tubing	Casing	
Other	06/18/2010 13:30							WAIT FOR RIG TO DRILL TO LOSS ZONE ON NEXT WELL TO MAKE SURE WELLS ARE NOT COMMUNICATING
Pre-Rig Down Safety Meeting	06/18/2010 13:50							ALL HES EMPLOYEES
Rig-Down Equipment	06/18/2010 14:00							
Pre-Convoy Safety Meeting	06/18/2010 15:00							ALL HES EMPLOYEES
Crew Leave Location	06/18/2010 15:30							THANK YOU FOR USING HALLIBURTON DUSTIN SMITH AND CREW

Sold To # : 344034

Ship To # :2790050

Quote # :

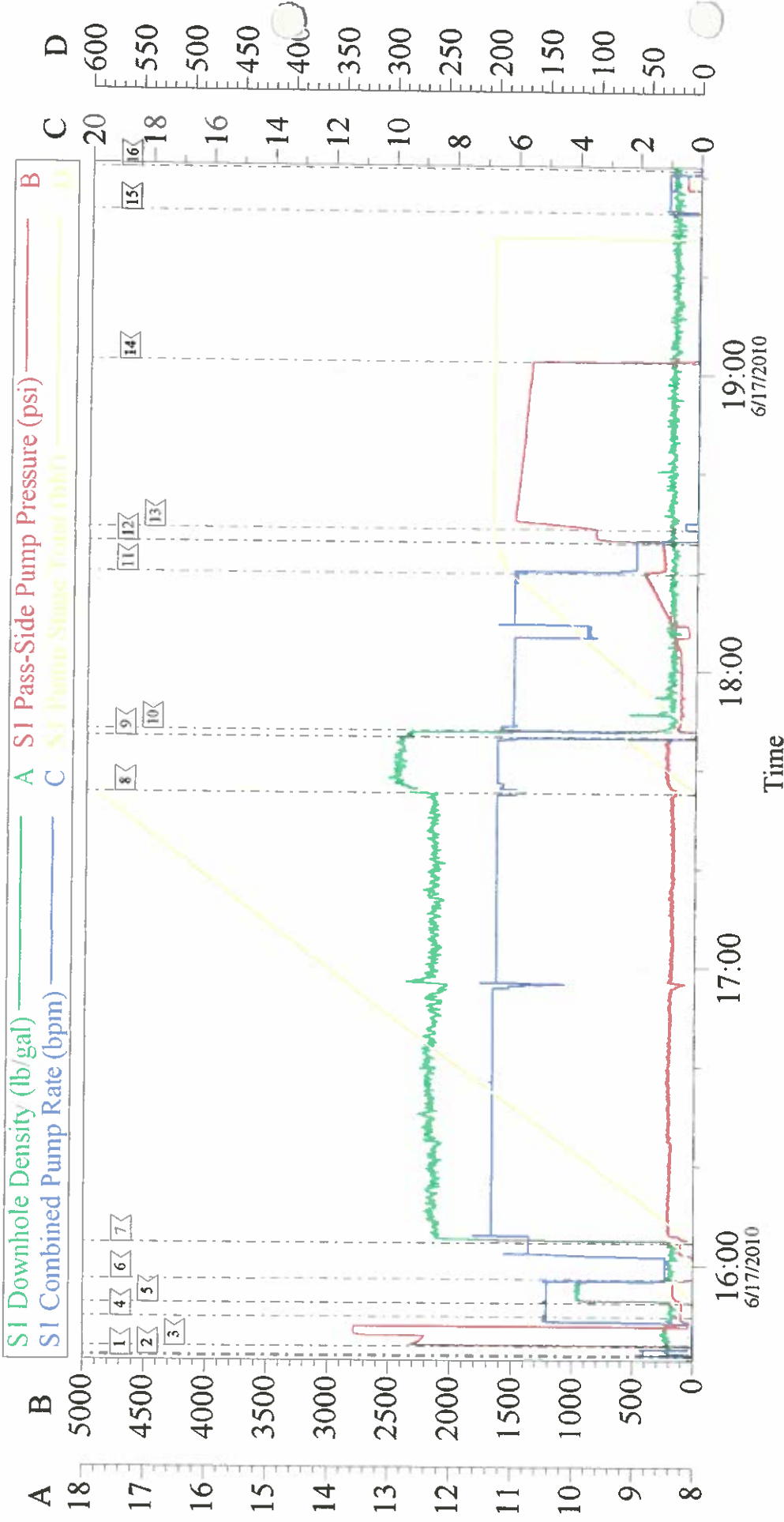
Sales Order # : 7441750

SUMMIT Version: 7.20.130

Friday, June 18, 2010 02:30:00

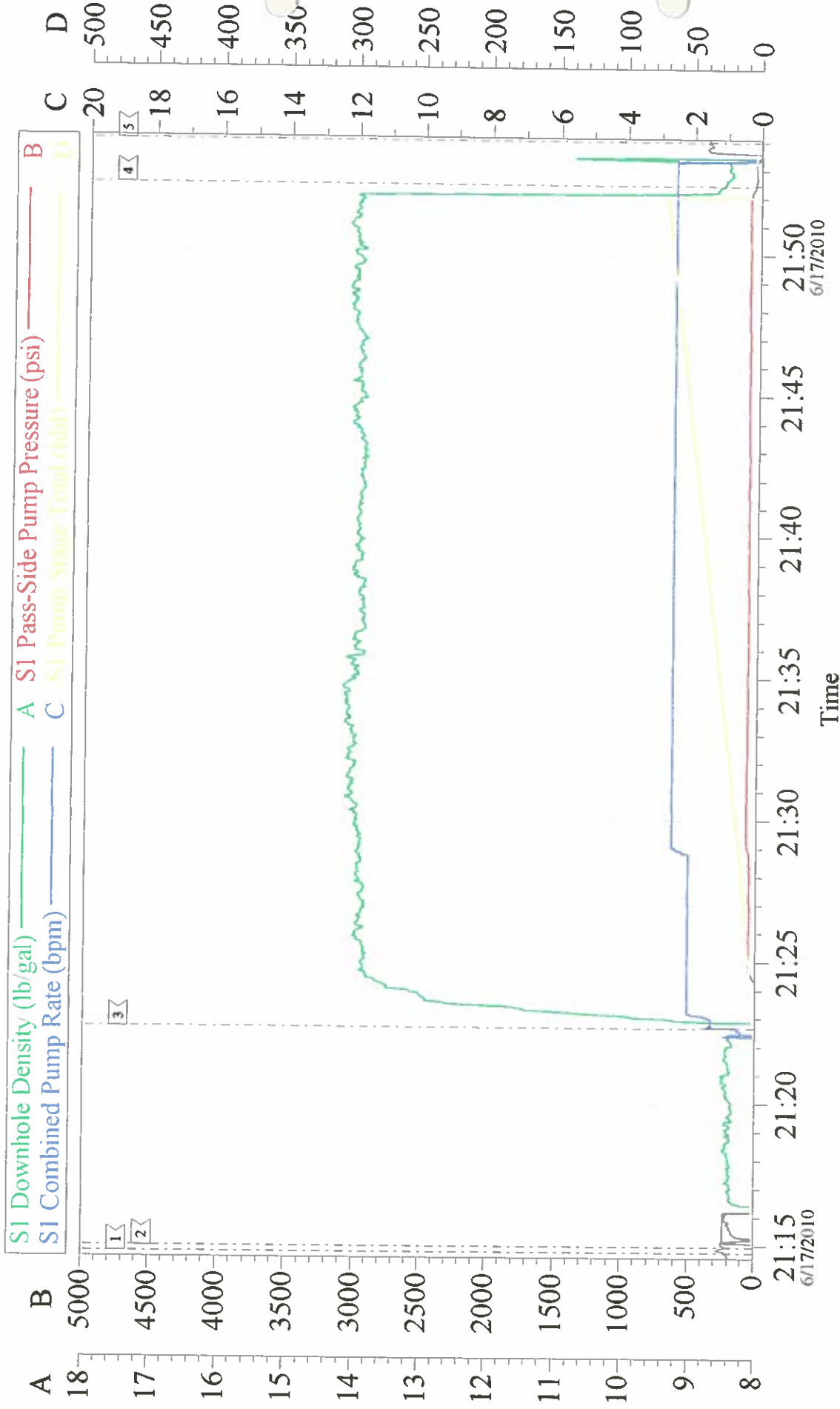
OXY

697-16-02B 9 5/8 SURFACE



Customer: OXY	Job Date: 17-Jun-2010	Sales Order #: 7441750
Well Description: CC-697-16-02B	Job Type: 9 5/8 SURFACE	ADC Used: YES
Company Rep: O B SANCHEZ	Cement Supervisor: DUSTIN SMITH	Elite #: 9 JESSE SLAUGHTER

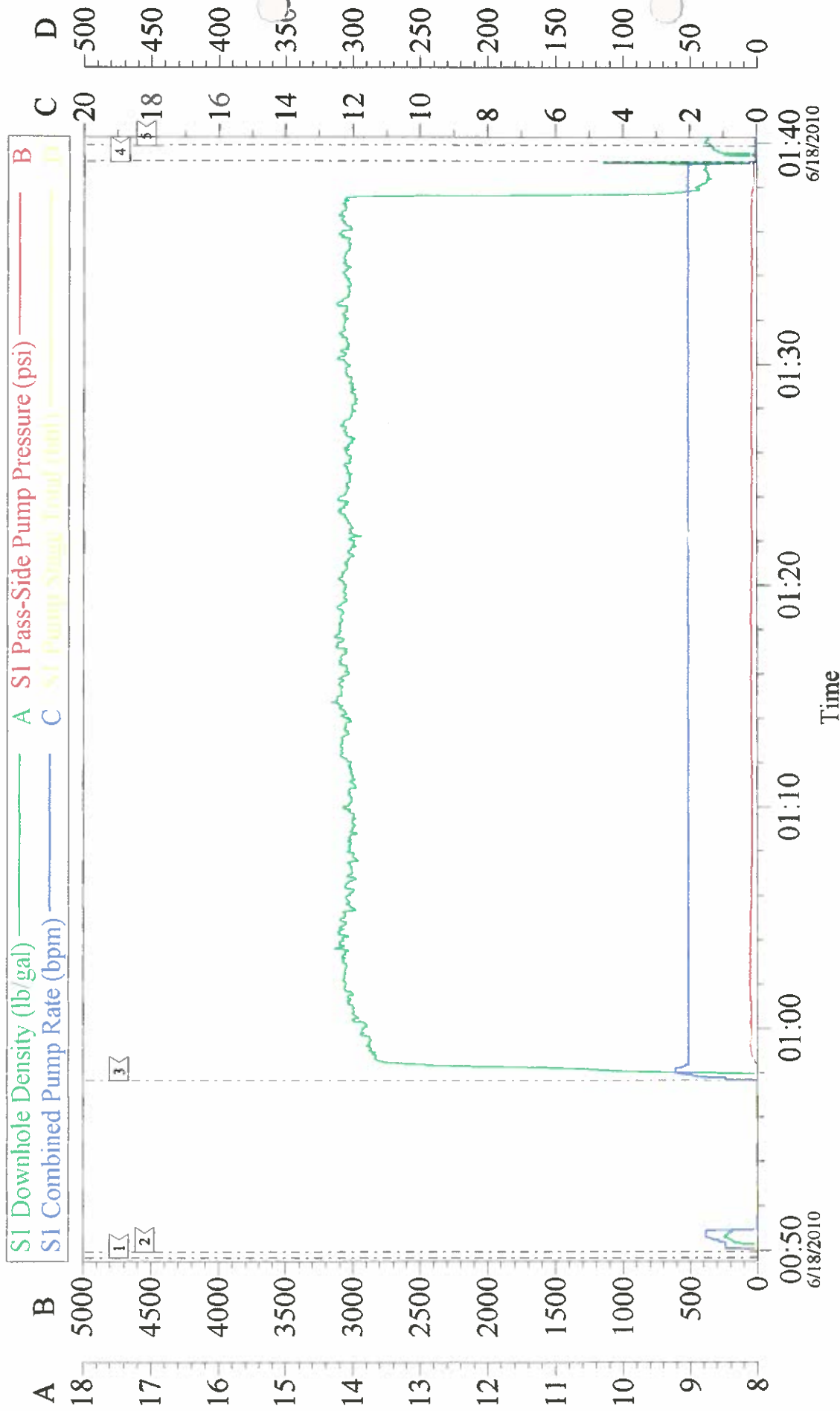
OXY TOP OUT #1



Customer: OXY	Job Date: 17-Jun-2010	Sales Order #: 7441740
Well Description: CC 697-16-02B	Job Type: TOP OUT	ADC Used: YES
Company Rep: OB SANCHEZ	Cement Supervisor: DUSTIN SMITH	Elite #: 9
		JESSE SLAUGHTER

OXY

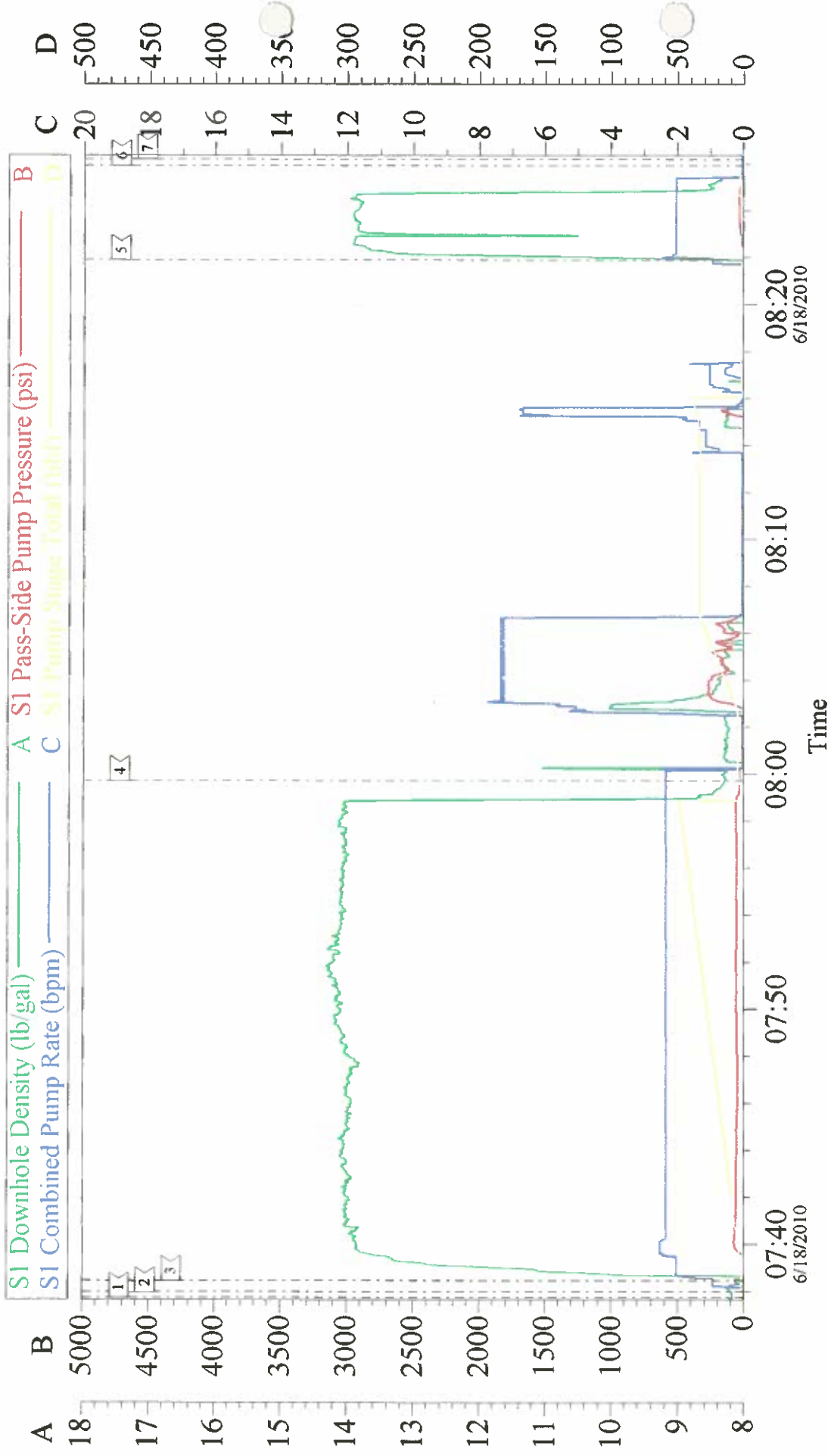
TOP OUT # 2



Local Event Log			
1 START JOB	00:49:41	2 FILL LINES	00:49:59
3 PUMP CEMENT	00:57:40	4 CLEAR LINES	01:39:10
5 END JOB	01:39:53		

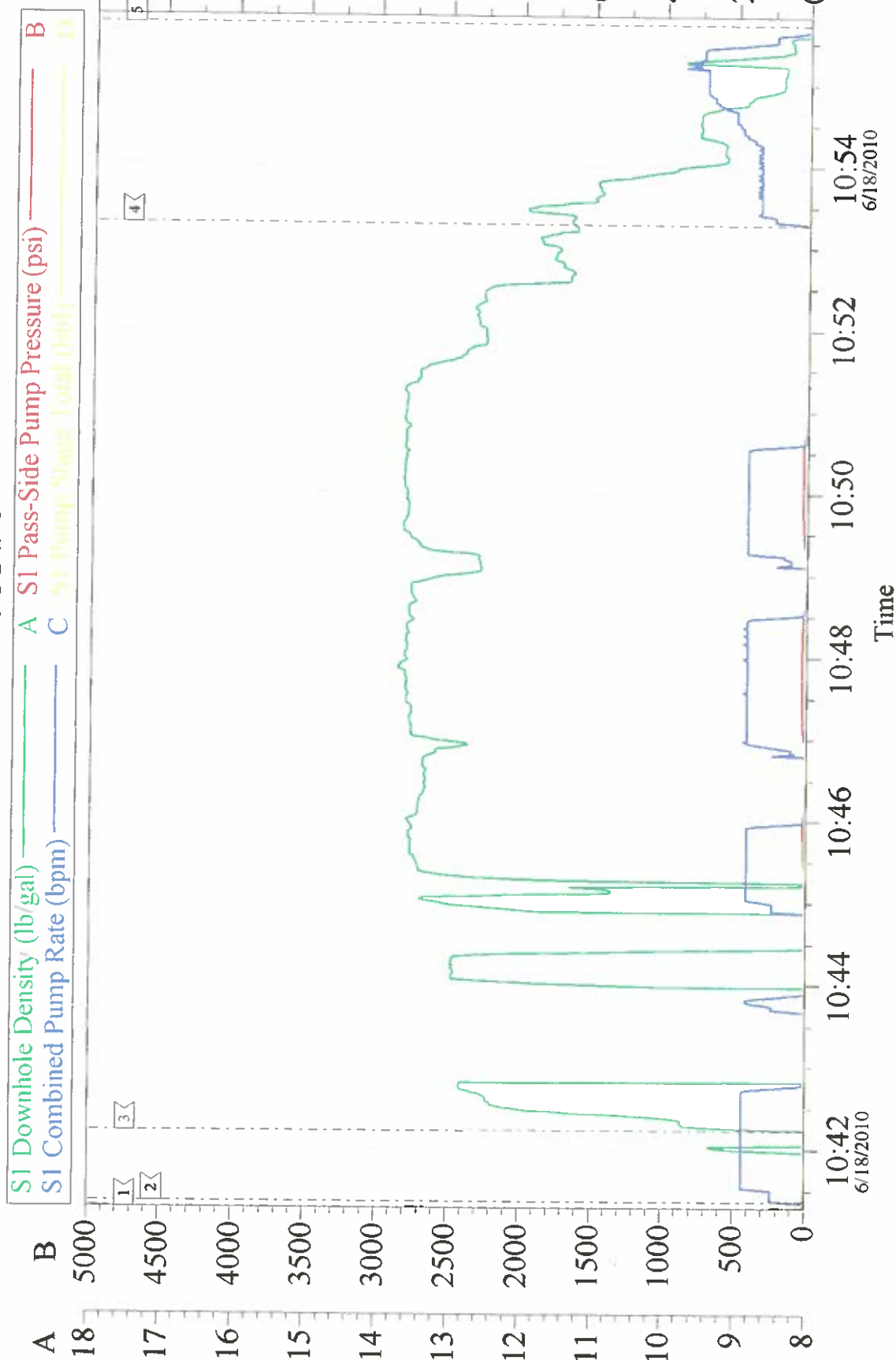
Customer: OXY	Job Date: 17-Jun-2010	Sales Order #: 7441740
Well Description: CC-697-16-02B	Job Type: TOP OUT # 2	ADC Used: YES
Company Rep: OB SANCHEZ	Cement Supervisor: DUSTIN SMITH	Elite #: 9
		JESSE SLAUGHTER

OXY TOP OUT # 3



Customer: OXY	Job Date: 18-Jun-2010	Sales Order #: 7441740
Well Description: CC-697-16-02B	Job Type: TOP OUT #3	ADC Used: YES
Company Rep: MAARCO SILVA	Cement Supervisor: DUSTIN SMITH	ELITE # 9 JESSE SLAUGHTER

OXY TOP OUT # 4



Customer: OXY	Job Date: 18-Jun-2010	Sales Order #: 7441740
Well Description: CC697-16-02B	Job Type: TOP OUT #4	ADC Used: YES
Company Rep: OB SANCHEZ	cement supervisor DUSTIN SMITH	Elite #: 6 JESSE SLAUGHTER