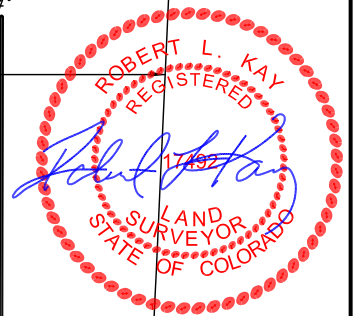
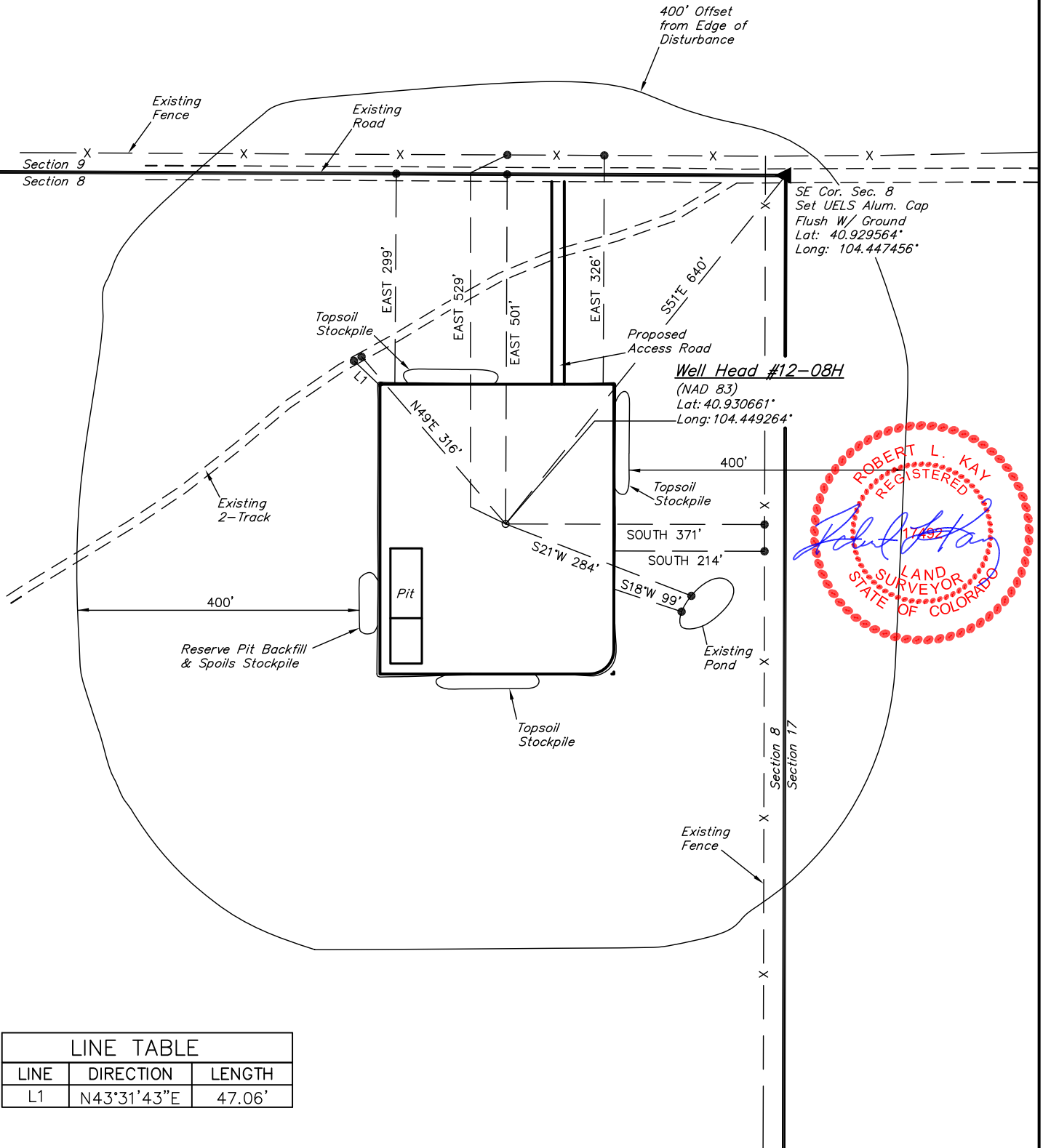


EOG RESOURCES, INC.

ADDENDUM TO LEGAL PLAT FOR

CRITTER CREEK #12-08H
SECTION 8, T11N, R63W, 6th P.M.
400' FSL 501' FEL

SCALE: 1" = 60'
DATE: 02-17-10
DRAWN BY: C.H.
REV: 12-15-10
REV: 01-25-11



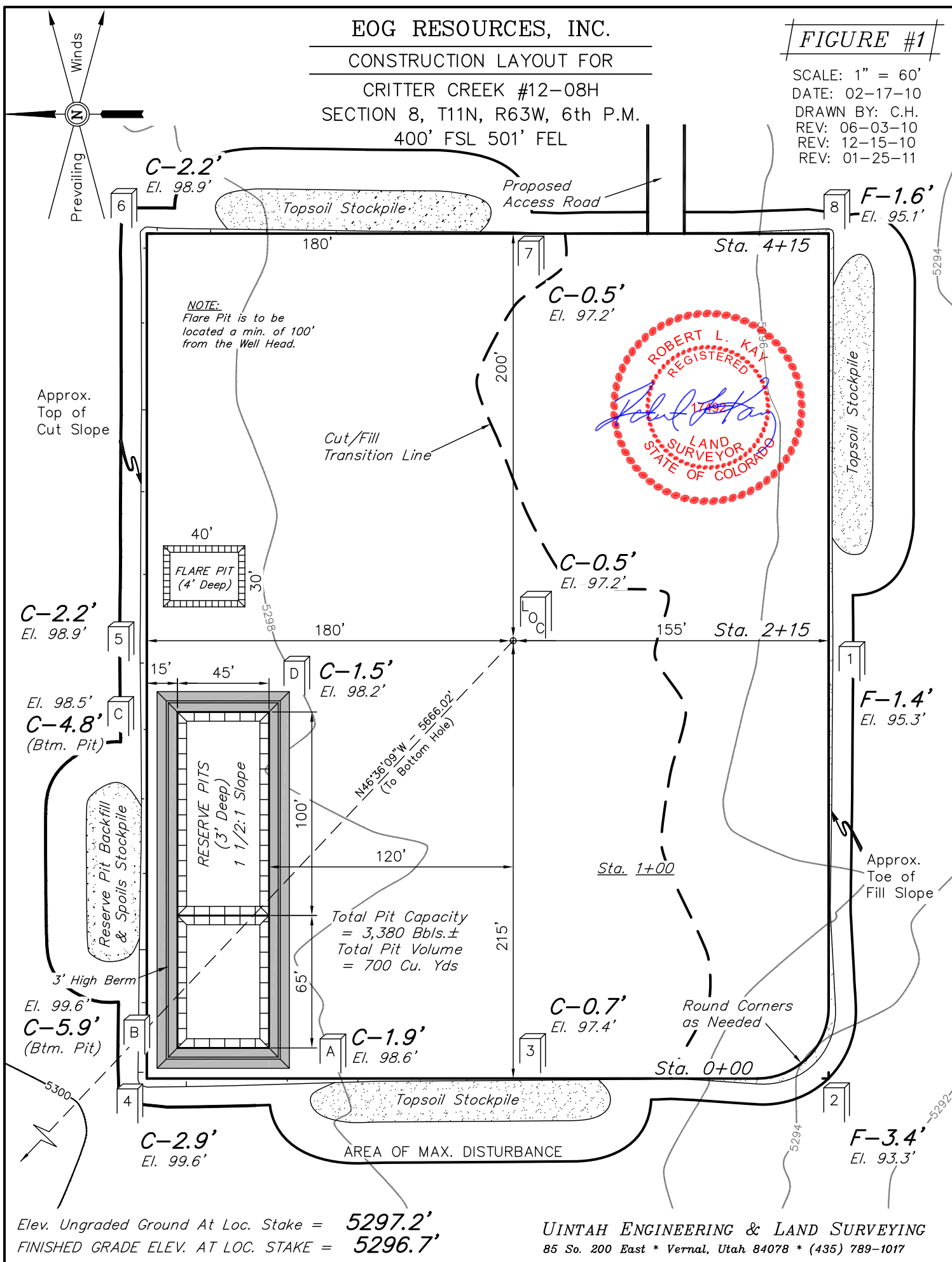
EOG RESOURCES, INC.

CONSTRUCTION LAYOUT FOR

CRITTER CREEK #12-08H
SECTION 8, T11N, R63W, 6th P.M.
400' FSL 501' FEL

FIGURE #1

SCALE: 1" = 60'
DATE: 02-17-10
DRAWN BY: C.H.
REV: 06-03-10
REV: 12-15-10
REV: 01-25-11



Elev. Ungraded Ground At Loc. Stake = 5297.2'
FINISHED GRADE ELEV. AT LOC. STAKE = 5296.7'

UINTAH ENGINEERING & LAND SURVEYING
85 So. 200 East * Vernal, Utah 84078 * (435) 789-1017

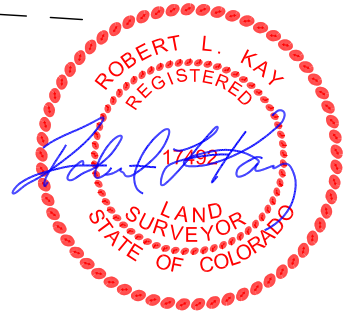
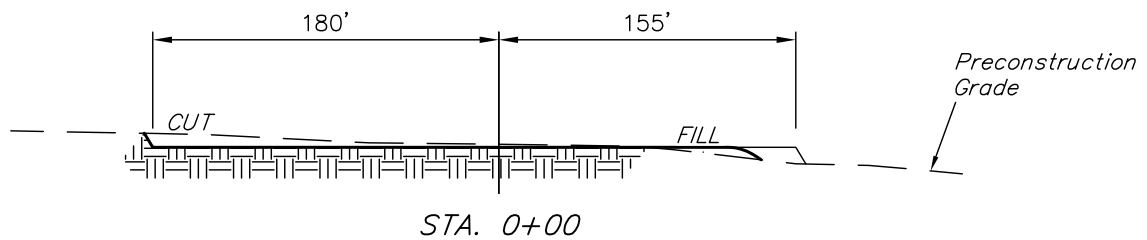
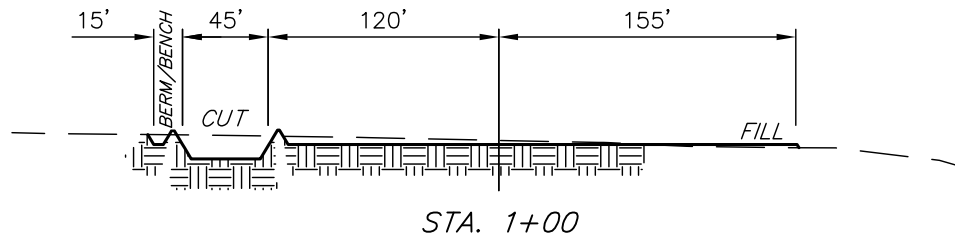
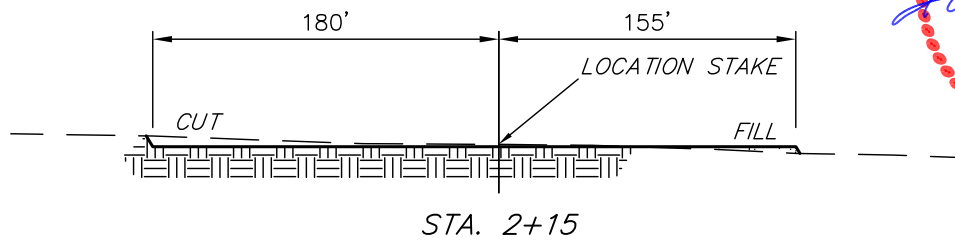
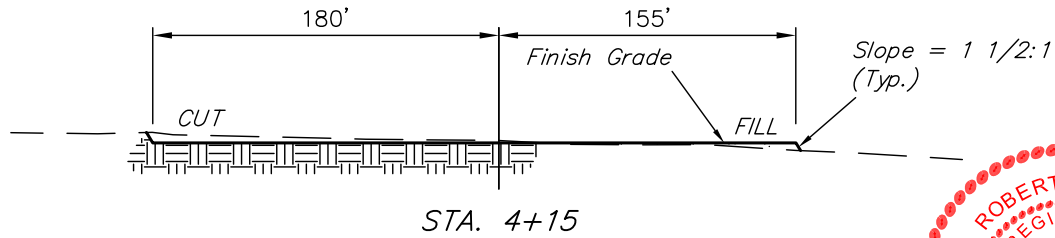
EOG RESOURCES, INC.

FIGURE #2

CONSTRUCTION LAYOUT CROSS SECTIONS FOR CRITTER CREEK #12-08H SECTION 8, T11N, R63W, 6th P.M. 400' FSL 501' FEL

X-Section
Scale
1" = 100'

DATE: 02-17-10
DRAWN BY: C.H.
REV: 12-15-10
REV: 01-25-11



NOTE:

Topsoil should not be Stripped Below Finished Grade on Substructure Area.

APPROXIMATE ACREAGES

WELL SITE DISTURBANCE = ± 4.054 ACRES
ACCESS ROAD DISTURBANCE = ± 0.196 ACRES
TOTAL = ± 4.250 ACRES

* NOTE:
FILL QUANTITY INCLUDES 5% FOR COMPACTION

APPROXIMATE YARDAGES

(6") Topsoil Stripping = 2,660 Cu. Yds.
Remaining Location = 2,490 Cu. Yds.
TOTAL CUT = 5,150 CU.YDS.
FILL = 2,140 CU.YDS.

EXCESS MATERIAL = 3,010 Cu. Yds.
Topsoil & Pit Backfill (1/2 Pit Vol.) = 3,010 Cu. Yds.
EXCESS UNBALANCE (After Interim Rehabilitation) = 0 Cu. Yds.

UINTAH ENGINEERING & LAND SURVEYING
85 So. 200 East * Vernal, Utah 84078 * (435) 789-1017

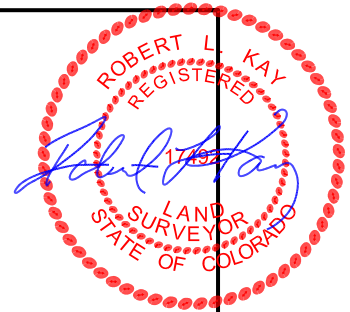
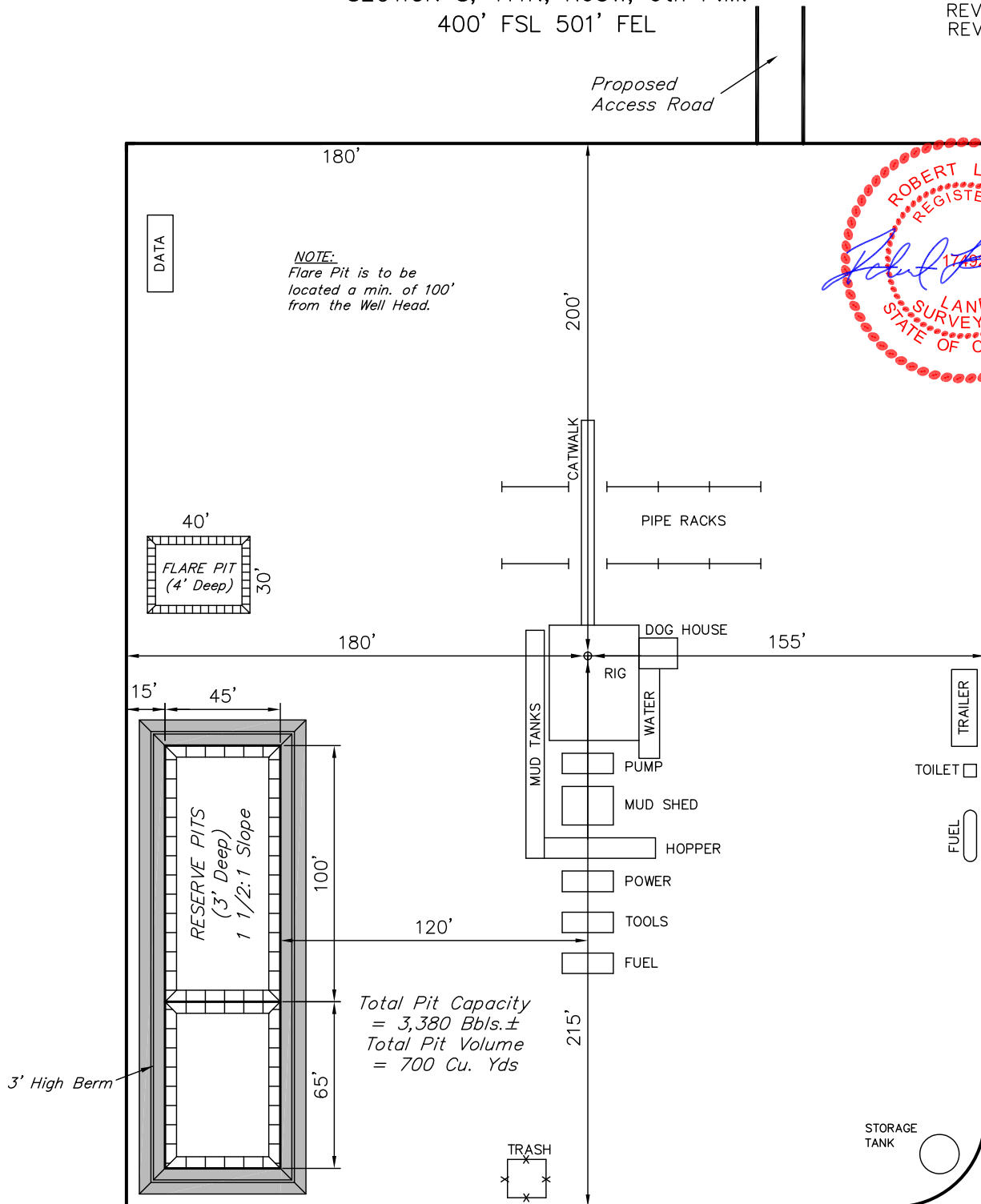
EOG RESOURCES, INC.

TYPICAL RIG LAYOUT FOR

CRITTER CREEK #12-08H
SECTION 8, T11N, R63W, 6th P.M.
400' FSL 501' FEL

FIGURE #3

SCALE: 1" = 60'
DATE: 02-17-10
DRAWN BY: C.H.
REV: 12-15-10
REV: 01-25-11



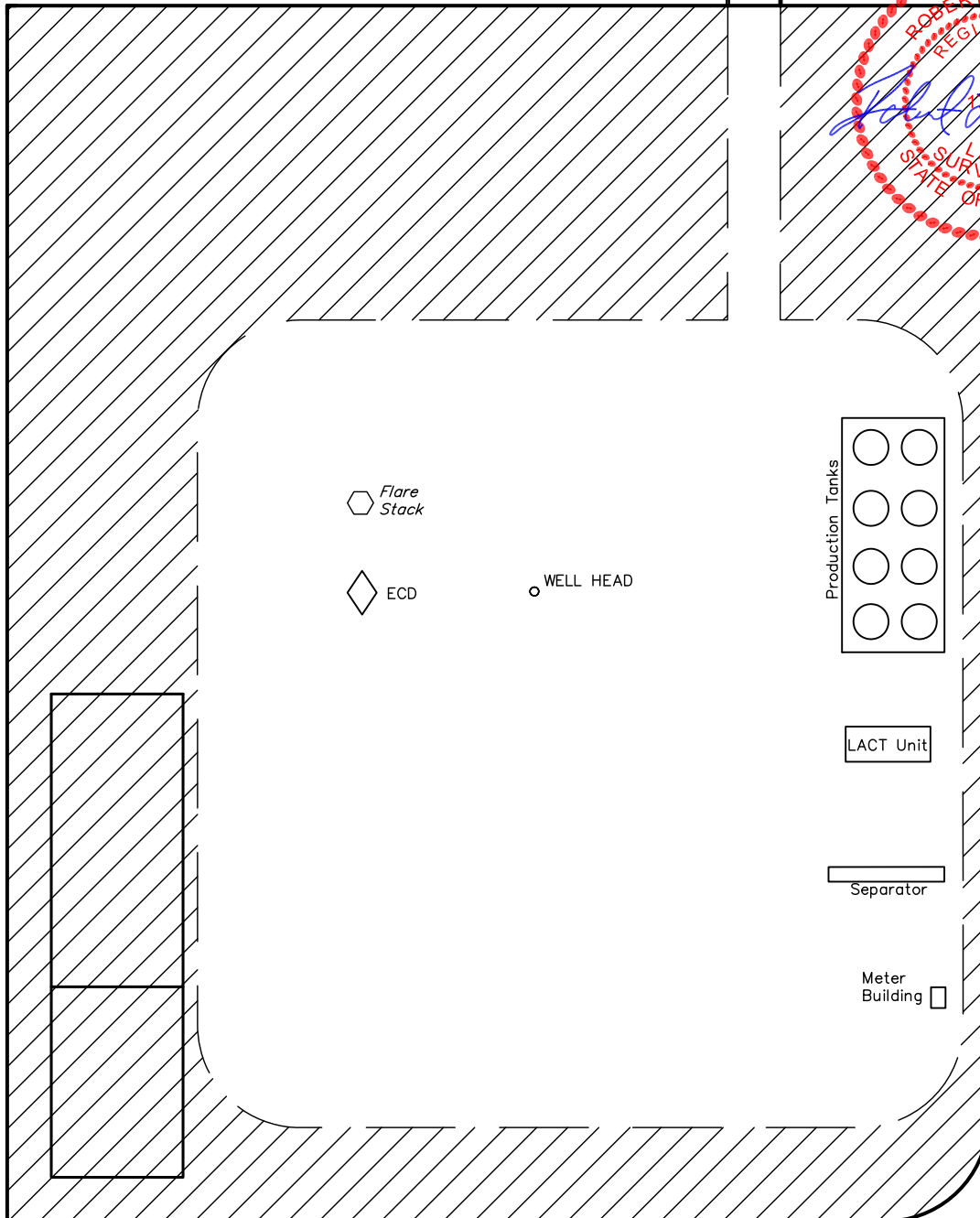
EOG RESOURCES, INC.
RECLAMATION DIAGRAM FOR
CRITTER CREEK #12-08H
SECTION 8, T11N, R63W, 6th P.M.
400' FSL 501' FEL

FIGURE #4

SCALE: 1" = 60'
DATE: 02-17-10
DRAWN BY: C.H.
REV: 12-15-10
REV: 01-25-11



Access Road



APPROXIMATE ACREAGES
UN-RECLAIMED = ± 1.675 ACRES



EOG RESOURCES, INC.

LOCATION DRAWING FOR

CRITTER CREEK #12-08H
SECTION 8, T11N, R63W, 6th P.M.
400' FSL 501' FEL

FIGURE #5

DATE: 02-18-10
DRAWN BY: C.H.
REV: 12-15-10
REV: 01-25-11



LINE TABLE			
LINE	DIRECTION	LENGTH	FEATURE
L1	SOUTH	401'	Property Line

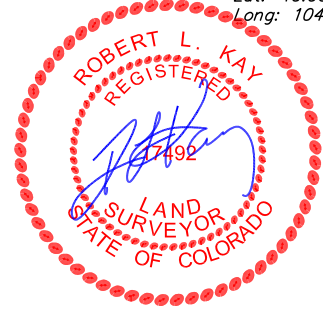
1/4 Section Line
8

1/4 Section Line

1/16 Section Line

Section Line

2009 Alum. Cap
Buried 0.5' Deep
Lat: 40.936817°
Long: 104.447422°



CURRENT LAND USE

CROP LAND: ☐ IRRIGATED ☐ DRY LAND ☐ IMPROVED PASTURE ☐ HAY MEADOW ☐ CRP
NON-CROP LAND: ☐ RANGELAND ☐ TIMBER ☐ RECREATIONAL ☐ OTHER (Describe) _____
SUBDIVIDED: ☐ INDUSTRIAL ☐ COMMERCIAL ☐ RESIDENTIAL _____

FUTURE LAND USE

CROP LAND: ☐ IRRIGATED ☐ DRY LAND ☐ IMPROVED PASTURE ☐ HAY MEADOW ☐ CRP
NON-CROP LAND: ☐ RANGELAND ☐ TIMBER ☐ RECREATIONAL ☐ OTHER (Describe) _____
SUBDIVIDED: ☐ INDUSTRIAL ☐ COMMERCIAL ☐ RESIDENTIAL _____

PLANT COMMUNITY

☐ DISTURBED GRASSLAND
☐ NATIVE GRASSLAND
☐ SHRUB LAND
☐ PLAINS RIPARIAN
☐ MOUNTAIN RIPARIAN
☐ FOREST LAND
☐ WETLANDS AQUATIC
☐ ALPINE
☐ OTHER (Describe): _____

1921 Brass Cap
0.4' High, T-Post
Lat: 40.929569°
Long: 104.456917°

**Meador
Ranch Inc.**

1/16 Section Line

N00°15'12"E - 2643.87' (Meas.)

Existing Road

N17°E - 18.9 Mi.
(To Railroad)

Proposed
Access Road

S85°E - 1.1 Mi.
(To Powerline)

S64°E - 6733'
(To Building)

S7°E - 1206'
(To Water Well)

Section Line

S89°53'04"E - 2614.82' (Meas.)

Set UELS Alum. Cap
Flush W/ Ground
Lat: 40.929564°
Long: 104.447456°