
OXY GRAND JUNCTION EBUSINESS

**CC 697-08-54B
GRAND VALLEY
Garfield County , Colorado**

Cement Surface Casing

Job Site Documents

The Road to Excellence Starts with Safety

Sold To #: 344034	Ship To #: 2798925	Quote #:	Sales Order #: 7542650
Customer: OXY GRAND JUNCTION EBUSINESS	Customer Rep: Benevides, Simon		
Well Name: CC	Well #: 697-08-54B	API/UWI #: 05-045-19287	
Field: GRAND VALLEY	City (SAP): PARACHUTE	County/Parish: Garfield	State: Colorado
Lat: N 39.531 deg. OR N 39 deg. 31 min. 50.228 secs.	Long: W 108.233 deg. OR W -109 deg. 46 min. 0.451 secs.		
Contractor: OXY	Rig/Platform Name/Num: H&P 330		
Job Purpose: Cement Surface Casing			
Well Type: Development Well	Job Type: Cement Surface Casing		
Sales Person: DUNNING, DUSTIN	Srvc Supervisor: MILLER, KEVIN	MBU ID Emp #: 443040	

Job Personnel

HES Emp Name	Exp Hrs	Emp #	HES Emp Name	Exp Hrs	Emp #	HES Emp Name	Exp Hrs	Emp #
BANKS, BRENT A	17	371353	CHASTAIN, DERICK Allan	17	455848	HOEFER, BRYAN D	17	415775
LUNCEFORD, STEVEN John	17	457512	MILLER, KEVIN Paul	17	443040	MUHLESTEIN, RYAN Herrick	17	453609
NELSON, RYAN Cody	17	386514	ROSS, CHARLES Raymond	17	453128	TRIPLETT, MICHEAL Anthony	17	447908

Equipment

HES Unit #	Distance-1 way	HES Unit #	Distance-1 way	HES Unit #	Distance-1 way	HES Unit #	Distance-1 way
10567589C	120 mile	10784064	120 mile	10822535	120 mile	10856450	120 mile
10856464	120 mile	10867322	120 mile	10938665	120 mile	10938678	120 mile
10988964	120 mile	10995027	120 mile	10998512	120 mile	11006314	120 mile
11259885	120 mile	11360871	120 mile	11542767	120 mile		

Job Hours

Date	On Location Hours	Operating Hours	Date	On Location Hours	Operating Hours	Date	On Location Hours	Operating Hours
8/3/10	17	7						

TOTAL Total is the sum of each column separately

Job

Formation Name	Formation Depth (MD)	Top	Bottom	Form Type	Job depth MD	Job Depth TVD	Water Depth	Perforation Depth (MD)	From	To
				BHST	2710. ft	2710. ft	4. ft			

Job Times

Date	Time	Time Zone
03 - Aug - 2010	00:00	MST
03 - Aug - 2010	06:00	MST
02 - Aug - 2010	14:45	MST
03 - Aug - 2010	21:51	MST

Well Data

Description	New / Used	Max pressure psig	Size in	ID in	Weight lbm/ft	Thread	Grade	Top MD ft	Bottom MD ft	Top TVD ft	Bottom TVD ft
-------------	------------	-------------------	---------	-------	---------------	--------	-------	-----------	--------------	------------	---------------

Sales/Rental/3rd Party (HES)

Description	Qty	Qty uom	Depth	Supplier
PLUG,CMTG,TOP,9 5/8,HWE,8.16 MIN/9.06 MA	1	EA		
R/A DENSOMETER W/CHART RECORDER,/JOB,ZI	1	JOB		
PORT. DATA ACQUIS. W/OPTICEM RT W/HES	1	EA		
ADC (AUTO DENSITY CTRL) SYS, /JOB,ZI	1	JOB		

Tools and Accessories

Type	Size	Qty	Make	Depth	Type	Size	Qty	Make	Depth	Type	Size	Qty	Make
Guide Shoe					Packer					Top Plug	9.625	1	HES
Float Shoe					Bridge Plug					Bottom Plug			
Float Collar					Retainer					SSR plug set			
Insert Float										Plug Container	9.625	1	HES
Stage Tool										Centralizers			

Miscellaneous Materials													
Gelling Agt		Conc		Surfactant		Conc		Acid Type		Qty		Conc	%
Treatment Fld		Conc		Inhibitor		Conc		Sand Type		Size		Qty	
Fluid Data													
Stage/Plug #: 1													
Fluid #	Stage Type	Fluid Name	Qty	Qty uom	Mixing Density lbm/gal	Yield ft ³ /sk	Mix Fluid Gal/sk	Rate bbl/min	Total Mix Fluid Gal/sk				
1	WATER SPACER		20.00	bbl	8.33	.0	.0	.0					
2	SUPER FLUSH 101	SUPER FLUSH 101 - SBM (12199)	20.00	bbl	10.	.0	.0	.0					
3	WATER SPACER		20.00	bbl	.	.0	.0	.0					
4	Lead Cement	VERSACEM (TM) SYSTEM (452010)	1030.0	sacks	12.3	2.33	12.62		12.62				
	12.62 Gal	FRESH WATER											
5	Tail Cement	VERSACEM (TM) SYSTEM (452010)	160.0	sacks	12.8	2.07	10.67		10.67				
	10.67 Gal	FRESH WATER											
6	DISPLACEMENT		208.00	bbl	.	.0	.0	.0					
7	Topout Cement	HALCEM (TM) SYSTEM (452986)	15.0	sacks	12.5	1.97	10.96		10.96				
	4 %	ECONOLITE (100001580)											
	10.96 Gal	FRESH WATER											
	7.67 Gal	FRESH WATER											
Calculated Values			Pressures			Volumes							
Displacement	207.9	Shut In: Instant		Lost Returns	28	Cement Slurry	487	Pad					
Top Of Cement	SURFACE	5 Min		Cement Returns	127	Actual Displacement	207	Treatment					
Frac Gradient		15 Min		Spacers		Load and Breakdown		Total Job					
Rates													
Circulating	5	Mixing	5	Displacement	5	Avg. Job	5						
Cement Left In Pipe	Amount	53.1 ft	Reason	Shoe Joint									
Frac Ring # 1 @	ID	Frac ring # 2 @	ID	Frac Ring # 3 @	ID	Frac Ring # 4 @	ID						
The Information Stated Herein Is Correct				Customer Representative Signature									

The Road to Excellence Starts with Safety

The Road to Excellence Starts With Safety

Sold To #: 344034	Ship To #: 2798925	Quote #:	Sales Order #: 7542650
Customer: OXY GRAND JUNCTION EBUSINESS		Customer Rep: Benevides, Simon	
Well Name: CC		Well #: 697-08-54B	API/UWI #: 05-045-19287
Field: GRAND VALLEY	City (SAP): PARACHUTE	County/Parish: Garfield	State: Colorado
Legal Description:			
Lat: N 39.531 deg. OR N 39 deg. 31 min. 50.228 secs.		Long: W 108.233 deg. OR W -109 deg. 46 min. 0.451 secs.	
Contractor: OXY		Rig/Platform Name/Num: H&P 330	
Job Purpose: Cement Surface Casing			Ticket Amount:
Well Type: Development Well		Job Type: Cement Surface Casing	
Sales Person: DUNNING, DUSTIN		Srvc Supervisor: MILLER, KEVIN	MBU ID Emp #: 443040

Activity Description	Date/Time	Cht #	Rate bbl/min	Volume bbl		Pressure psig		Comments
				Stage	Total	Tubing	Casing	
Pre-Convoy Safety Meeting	08/03/2010 03:00							ALL HES PERSONEL
Crew Leave Yard	08/03/2010 03:30							
Arrive At Loc	08/03/2010 06:00							RIG WAS STILL RUNNING CASING UPON HES ARRIVAL
Assessment Of Location Safety Meeting	08/03/2010 12:00							ALL HES PERSONEL
Rig-Up Equipment	08/03/2010 12:30							2 ELITE PUMP TRUCKS (1 BACK UP TO A BRAND NEW PUMPS FIRST JOB) 2- FEILD STORAGE BINS, TWO- 660 BULK TRUCK, 1- TRANSPORT, 1- CEMENTERS F-550,
Rig-Up Completed	08/03/2010 13:00							
Pre-Job Safety Meeting	08/03/2010 14:20							ALL HES PERSONEL AND RIG CREW
Start Job	08/03/2010 14:45							TD- 2710, TP 2691.76, SJ- 53.1, MUD-9 PPG, OH- 14 3/4, CSH 9.625 36#
Pressure Test	08/03/2010 14:46							INITIAL TEST HAD A LEAKING UNION BUT AFTER TIGHTENING ALL LINES HELD TO 3500 PSI
Pump Spacer 1	08/03/2010 14:51		5	20			179.0	FRESH WATER
Pump Spacer 2	08/03/2010 14:56		5	20			100.0	SUPERFLUSH

Sold To # : 344034

Ship To # : 2798925

Quote # :

Sales Order # : 7542650

SUMMIT Version: 7.20.130

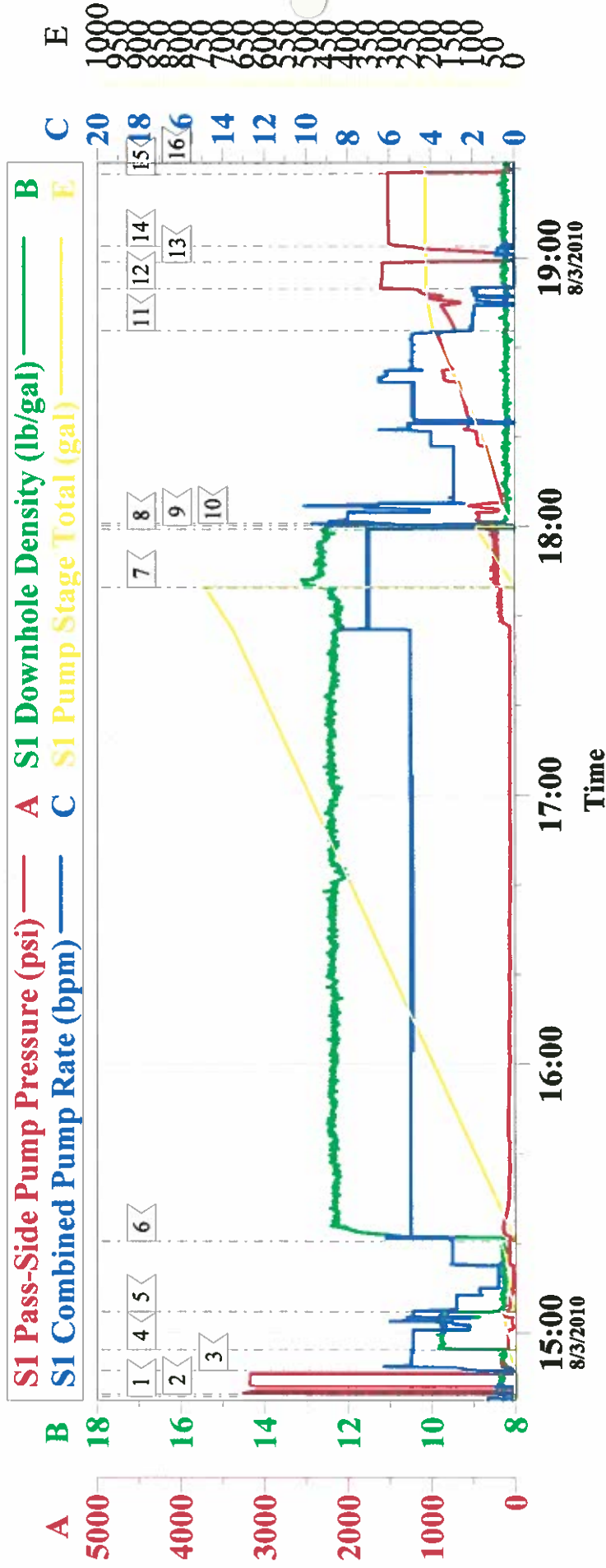
Tuesday, August 03, 2010 10:27:00

Activity Description	Date/Time	Cht #	Rate bbl/min	Volume bbl		Pressure psig		Comments
				Stage	Total	Tubing	Casing	
Pump Spacer 1	08/03/2010 15:04		5	20			129.0	FRESH WATER
Pump Lead Cement	08/03/2010 15:20		5	427			209.0	1030 SK, 12.3 PPG, 2.33 FT3/SK, 12.62 GAL/SK,
Pump Tail Cement	08/03/2010 17:56		5	59			253.0	160 SK, 12.8 PPG, 2.07 FT3/SK, 10.67 GAL/SK,
Shutdown	08/03/2010 17:59							
Drop Top Plug	08/03/2010 18:00							PLUG WENT
Pump Displacement	08/03/2010 18:00		8	207.6			1000.0	FRESH WATER, GOT 127 BLS OF CEMENT TO SURFACE
Slow Rate	08/03/2010 18:43		2	195			800.0	
Bump Plug	08/03/2010 18:53		2	2907.6			1600.0	
Check Floats	08/03/2010 18:59							FLOATS HELD, THEN PRESSURED UP TO 1500 PSI AND HELD FOR 15 MINUTES
Other	08/03/2010 20:28		0.5	4		2000.0		TRIED PUMPING SUGAR WATER TO CLEAR PARASITE STRING BUT THERE WAS A BLOCKAGE. PRESSURED UP TO 2000 PSI AND IT WOULD NOT BUDGE. THE FIRST 3 ATTEMPTS WERE NOT CHARTED.
Pump Cement	08/03/2010 21:43		1	5			97.0	TOP OUT CEMENT 350 SKS, 12.5 PPG, 1.97 FT3/SK, 10.96 GAL/SK, ONLY USED 14.5 SKS (5 BBLs) TO GET CEMENT TO SURFACE. WE ARE LEAVING THE REMAINING 336 SKS AND THE 660 BULK TRUCK ON LOCATION
End Job	08/03/2010 21:51							
Post-Job Safety Meeting (Pre Rig-Down)	08/03/2010 22:00							ALL HES PERSONEL

Activity Description	Date/Time	Cht #	Rate bbl/ min	Volume bbl		Pressure psig		Comments
				Stage	Total	Tubing	Casing	
Rig-Down Equipment	08/03/2010 22:10							
Pre-Convoy Safety Meeting	08/03/2010 23:00							ALL HES PERSONEL
Crew Leave Location	08/03/2010 23:30							
Other	08/03/2010 23:31							THANK YOU FOR CHOOSING HALLIBURTON, KEVIN MILLER AND CREW

OXY

CC 697-08-54B #, SURFACE

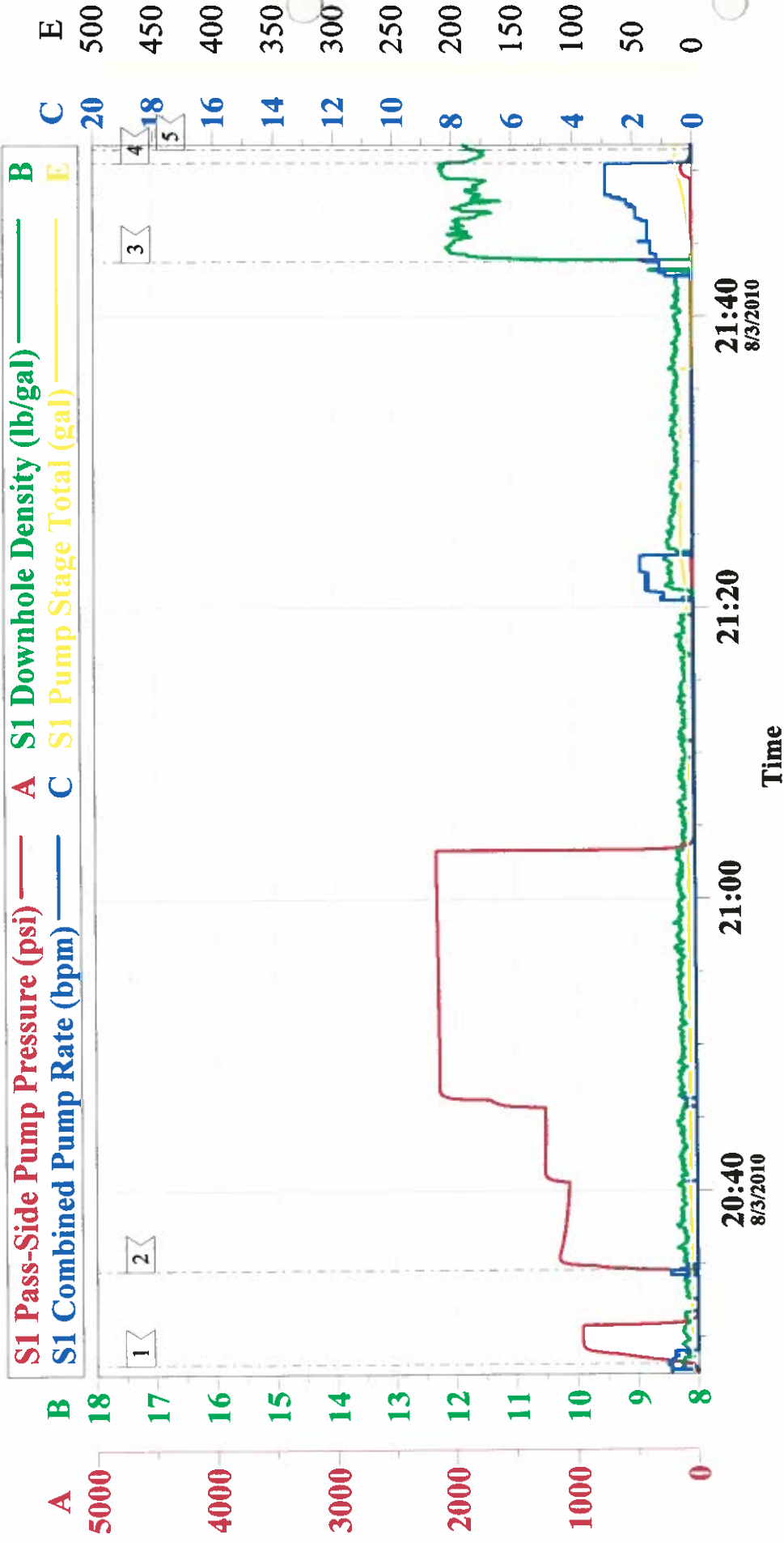


Local Event Log

Maximum	SPPP	Maximum	SPPP
1 START JOB	14:45:55 1267	2 PRESSURE TEST	14:46:27 3255
3 H2O SPACER	14:51:39 166.3	4 SUPERFLUSH	14:56:19 171.3
5 H2O SPACER	15:04:51 161.3	6 LEAD CEMENT	15:20:32 201.3
7 TAIL CEMENT	17:46:23 328.3	8 SHUTDOWN	17:59:21 320.3
9 DROP PLUG	18:00:13 329.3	10 PUMP DISPLACEMENT	18:00:41 924.3
11 SLOW RATE	18:43:42 1186	12 BUMP PLUG	18:53:08 1599
13 CHECK FLOATS	18:59:03 1547	14 PRESSURE UP ON FLOATS	19:02:35 1513
15 RELEASE PRESSURE	19:18:48 1513	16 END JOB	19:21:13 -10.70

Customer:	OXY	Job Date:	03-Aug-2010	Sales Order #:	7542650
Well Description:	CC 697-08-54B	Job type:	SURFACE	ADC Used:	YES
Customer Rep:	SIMON BENEVIDES	Service Supervisor:	KEVIN MILLER	Operator/ Pump:	HOEFER/ 1

OXY CC 697-08-54B #, TOP OUT



Local Event Log			
Maximum	SPPP	Maximum	SPPP
1 < PUMP THROUGH PARASITE STRING	20:28:11	2 < PUMP THROUGH PARASITE STRING	20:34:37
3 < PUMP TOP OUT	21:43:46	4 < SHUT DOWN	21:50:33
5 < END JOB	21:51:28		21:50:33
			21:50:33

Customer: OXY	Job Date: 03-Aug-2010	Sales Order #: DD
Well Description: CC 697-08-54B	Job type: TOP OUT	ADC Used: NO
Customer Rep: GOERGE LYERLY	Service Supervisor: KEVIN MILLER	Operator/ Pump: CHASTAIN/ 1