

---

# **OXY GRAND JUNCTION EBUSINESS**

---

**CC 697-08-64A  
GRAND VALLEY  
Garfield County , Colorado**

**Cement Surface Casing**  
**31-Aug-2010**

**Job Site Documents**

## The Road to Excellence Starts with Safety

Sold To #: 344034	Ship To #: 2804425	Quote #:	Sales Order #: 7545818
Customer: OXY GRAND JUNCTION EBUSINESS	Customer Rep: BENAVIDES, SIMON		
Well Name: CC	Well #: 697-08-64A	API/UWI #: 05-045-18366	
Field: GRAND VALLEY	City (SAP): Parachute	County/Parish: Garfield	State: Colorado
Lat: N 39.531 deg. OR N 39 deg. 31 min. 50.47 secs.	Long: W 108.233 deg. OR W -109 deg. 46 min. 0.448 secs.		
Contractor: H&P Drilling	Rig/Platform Name/Num: H&P 330		
Job Purpose: Cement Surface Casing			
Well Type: Development Well	Job Type: Cement Surface Casing		
Sales Person: DUNNING, DUSTIN	Srvc Supervisor: FEUERBORN, JOHN	MBU ID Emp #: 381677	

## Job Personnel

HES Emp Name	Exp Hrs	Emp #	HES Emp Name	Exp Hrs	Emp #	HES Emp Name	Exp Hrs	Emp #
COSTELDIA, BROCK James	9	476115	CREECH, STEVEN Michael	9	420183	FEUERBORN, JOHN William	9	381677
JENSEN, JESSE Robert	9	478774	REEVES, BRANDON W	9	287883	WINKER, STEVEN	9	478776

## Equipment

HES Unit #	Distance-1 way	HES Unit #	Distance-1 way	HES Unit #	Distance-1 way	HES Unit #	Distance-1 way
10000394	120 mile	10567589C	120 mile	10856450	120 mile	10856464	120 mile
10995027	120 mile	11259884	120 mile				

## Job Hours

Date	On Location Hours	Operating Hours	Date	On Location Hours	Operating Hours	Date	On Location Hours	Operating Hours
8-30-10	5	2	8-31-10	4	2			

TOTAL Total is the sum of each column separately

Formation Name	Job	Job Times
Formation Depth (MD) Top Bottom	Called Out	Date Time Time Zone
Form Type BHST	On Location	30 - Aug - 2010 13:40 CST
Job depth MD 2789. ft Job Depth TVD 2789. ft	Job Started	30 - Aug - 2010 18:45 CST
Water Depth Wk Ht Above Floor 4. ft	Job Completed	30 - Aug - 2010 20:29 CST
Perforation Depth (MD) From To	Departed Loc	31 - Aug - 2010 02:49 CST

## Well Data

Description	New / Used	Max pressure psig	Size in	ID in	Weight lbm/ft	Thread	Grade	Top MD ft	Bottom MD ft	Top TVD ft	Bottom TVD ft
-------------	------------	-------------------	---------	-------	---------------	--------	-------	-----------	--------------	------------	---------------

Sales/Rental/3<sup>rd</sup> Party (HES)

Description	Qty	Qty uom	Depth	Supplier
PLUG,CMTG, TOP, 9 5/8, HWE, 8.16 MIN/9.06 MA	1	EA		
R/A DENSOMETER W/CHART RECORDER, /JOB, ZI	1	JOB		
PORT. DATA ACQUIS. W/OPTICEM RT W/HES	1	EA		
ADC (AUTO DENSITY CTRL) SYS, /JOB, ZI	1	JOB		

## Tools and Accessories

Type	Size	Qty	Make	Depth	Type	Size	Qty	Make	Depth	Type	Size	Qty	Make
Guide Shoe					Packer					Top Plug	9.625	1	
Float Shoe					Bridge Plug					Bottom Plug			
Float Collar					Retainer					SSR plug set			
Insert Float										Plug Container	9.625	1	
Stage Tool										Centralizers			

## Miscellaneous Materials

Gelling Agt	Conc	Surfactant	Conc	Acid Type	Qty	Conc	%
Treatment Fld	Conc	Inhibitor	Conc	Sand Type	Size		Qty

Fluid Data									
Stage/Plug #: 1									
Fluid #	Stage Type	Fluid Name	Qty	Qty uom	Mixing Density lbm/gal	Yield ft <sup>3</sup> /sk	Mix Fluid Gal/sk	Rate bbl/min	Total Mix Fluid Gal/sk
1	Water Spacer		20	bbl	8.33	.0	.0	.0	
2	Super Flush 101	SUPER FLUSH 101 - SBM (12199)	20	bbl	10.	.0	.0	.0	
3	Water Spacer		20	bbl	.	.0	.0	.0	
4	Lead Cement	VERSACEM (TM) SYSTEM (452010)	1060	sacks	12.3	2.33	12.62		12.62
		12.62 Gal FRESH WATER							
5	Tail Cement	VERSACEM (TM) SYSTEM (452010)	160	sacks	12.8	2.07	10.67		10.67
		10.67 Gal FRESH WATER							
6	Displacement		209	bbl	.	.0	.0	.0	
7	Topout Cement	HALCEM (TM) SYSTEM (452986)	108	sacks	14.	1.78	7.67		7.67
		7.67 Gal FRESH WATER							
Calculated Values		Pressures		Volumes					
Displacement	209	Shut In: Instant		Lost Returns		Cement Slurry	500	Pad	
Top Of Cement	0	5 Min		Cement Returns	70	Actual Displacement	209	Treatment	
Frac Gradient		15 Min		Spacers	60	Load and Breakdown		Total Job	
Rates									
Circulating		Mixing	6	Displacement	6	Avg. Job			
Cement Left In Pipe	Amount 0 ft	Reason	Shoe Joint						
Frac Ring # 1 @	ID	Frac ring # 2 @	ID	Frac Ring # 3 @	ID	Frac Ring # 4 @	ID		
The Information Stated Herein Is Correct				Customer Representative Signature					

*The Road to Excellence Starts with Safety*

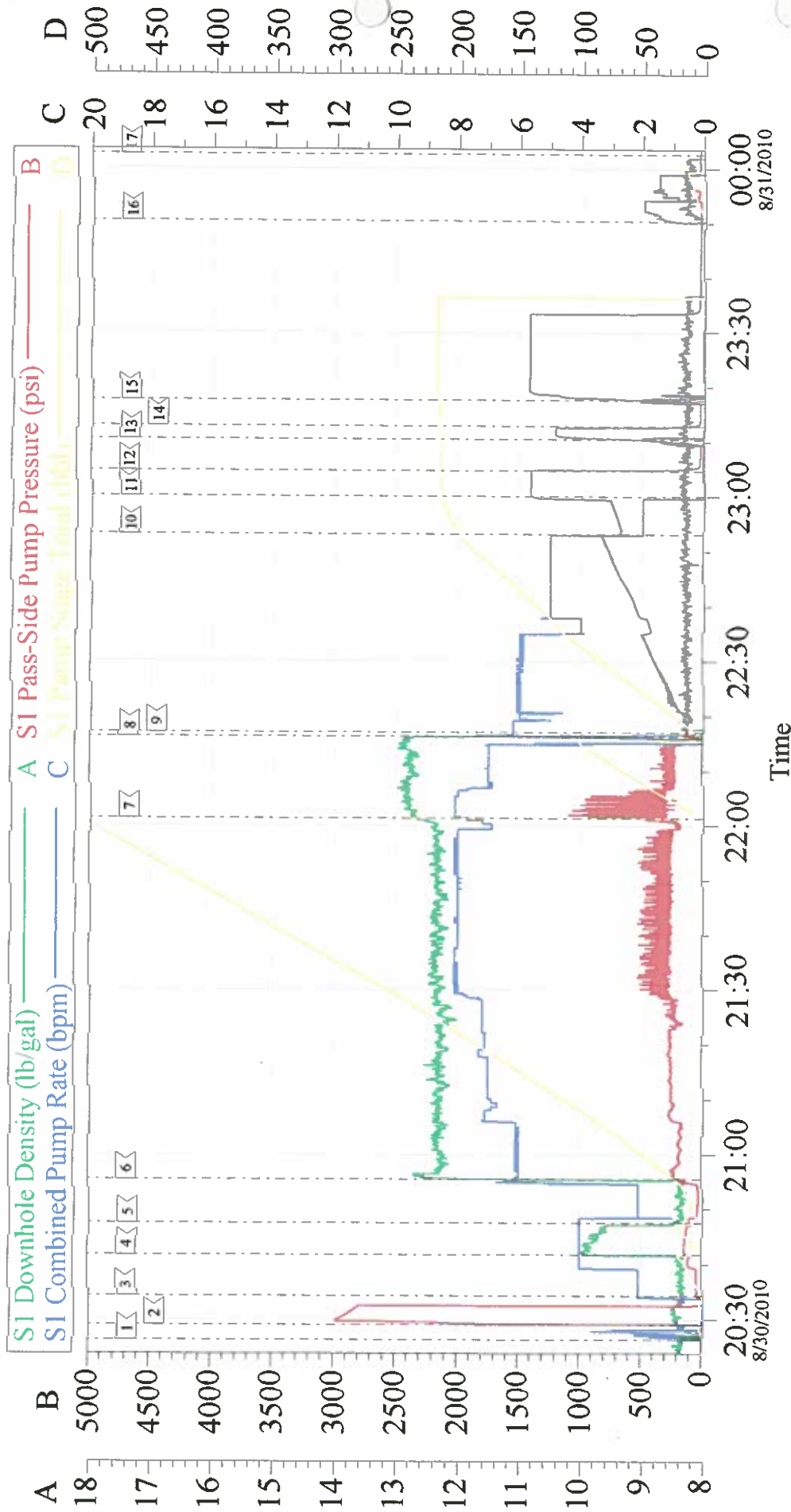
Sold To #: 344034		Ship To #: 2804425		Quote #:		Sales Order #: 7545818	
Customer: OXY GRAND JUNCTION EBUSINESS				Customer Rep: BENAVIDES, SIMON			
Well Name: CC			Well #: 697-08-64A		API/UWI #: 05-045-18366		
Field: GRAND VALLEY		City (SAP): Parachute		County/Parish: Garfield		State: Colorado	
Legal Description:							
Lat: N 39.531 deg. OR N 39 deg. 31 min. 50.47 secs.				Long: W 108.233 deg. OR W -109 deg. 46 min. 0.448 secs.			
Contractor: H&P Drilling			Rig/Platform Name/Num: H&P 330				
Job Purpose: Cement Surface Casing						Ticket Amount:	
Well Type: Development Well				Job Type: Cement Surface Casing			
Sales Person: DUNNING, DUSTIN				Srvc Supervisor: FEUERBORN, JOHN		MBU ID Emp #: 381677	

Activity Description	Date/Time	Cht #	Rate bbl/min	Volume bbl		Pressure psig		Comments
				Stage	Total	Tubing	Casing	
Test Lines	08/30/2010 02:09		0					2500psi ON TRUCK AND LINES
Depart Yard Safety Meeting	08/30/2010 16:15							
Crew Leave Yard	08/30/2010 16:30							
Other	08/30/2010 18:25							RIG CIRCULATING ON BOTTOM
Arrive At Loc	08/30/2010 18:45							
Safety Meeting - Assessment of Location	08/30/2010 18:50							
Other	08/30/2010 18:55							SPOT EQUIPMENT
Pre-Rig Up Safety Meeting	08/30/2010 19:10							
Rig-Up Equipment	08/30/2010 19:15							
Pre-Job Safety Meeting	08/30/2010 20:00							
Start Job	08/30/2010 20:26							
Pump Spacer 1	08/30/2010 20:34		4	20			110.0	H2O
Pump Spacer 1	08/30/2010 20:41		4	20			145.0	SUPER FLUSH
Pump Spacer 1	08/30/2010 20:47		4	20			110.0	H2O
Pump Lead Cement	08/30/2010 20:55		6	439.8			390.0	1060sks PUMPED AT 12.3ppg 2.33y 12.62wr TOP OF LEAD 0' GOT 70BBLs LEAD TO SURFACE, CEMENT FELL BACK

## Cementing Job Log

Activity Description	Date/Time	Cht #	Rate bbl/ min	Volume bbl		Pressure psig		Comments
				Stage	Total	Tubing	Casing	
Pump Tail Cement	08/30/2010 22:01		6	58.9			300.0	160sks PUMPED AT 12.8ppg 2.07y 10.62wr TOP OF TAIL 2229'
Drop Top Plug	08/30/2010 22:16							PLUG AWAY
Pump Displacement	08/30/2010 22:17		6				900.0	H2O SLOWED TO 5BBLs MIN AT 100 AWAY
Other	08/30/2010 22:53		2	190			800.0	SLOW RATE
Bump Plug	08/30/2010 23:00		2	209			1500. 0	
Check Floats	08/30/2010 23:04							HOLDING
Bump Plug	08/30/2010 23:10						1250. 0	
Check Floats	08/30/2010 23:12							HOLDING
Other	08/30/2010 23:17						1500. 0	PRESSURE TEST CASING HELD PRESSURE FOR 15 MINUTES
Other	08/30/2010 23:50		2	10			180.0	PUMP PARISITE 20lbs SUGAR ADDED TO 10 BARRELLS OF WATER
Start Job	08/31/2010 02:09							
Pump Spacer 1	08/31/2010 02:10		1	0.5			25.0	H2O
Pump Tail Cement	08/31/2010 02:11		2	38			50.0	108sks PUMPED AT 12.5ppg 1.97y 10.96wr TOOK 12 BBLs TO FILL HOLE CEMENT KEPT FALLING. TOP OUT CHARGED FOR ON A PREVIOUS WELL
End Job	08/31/2010 02:49							

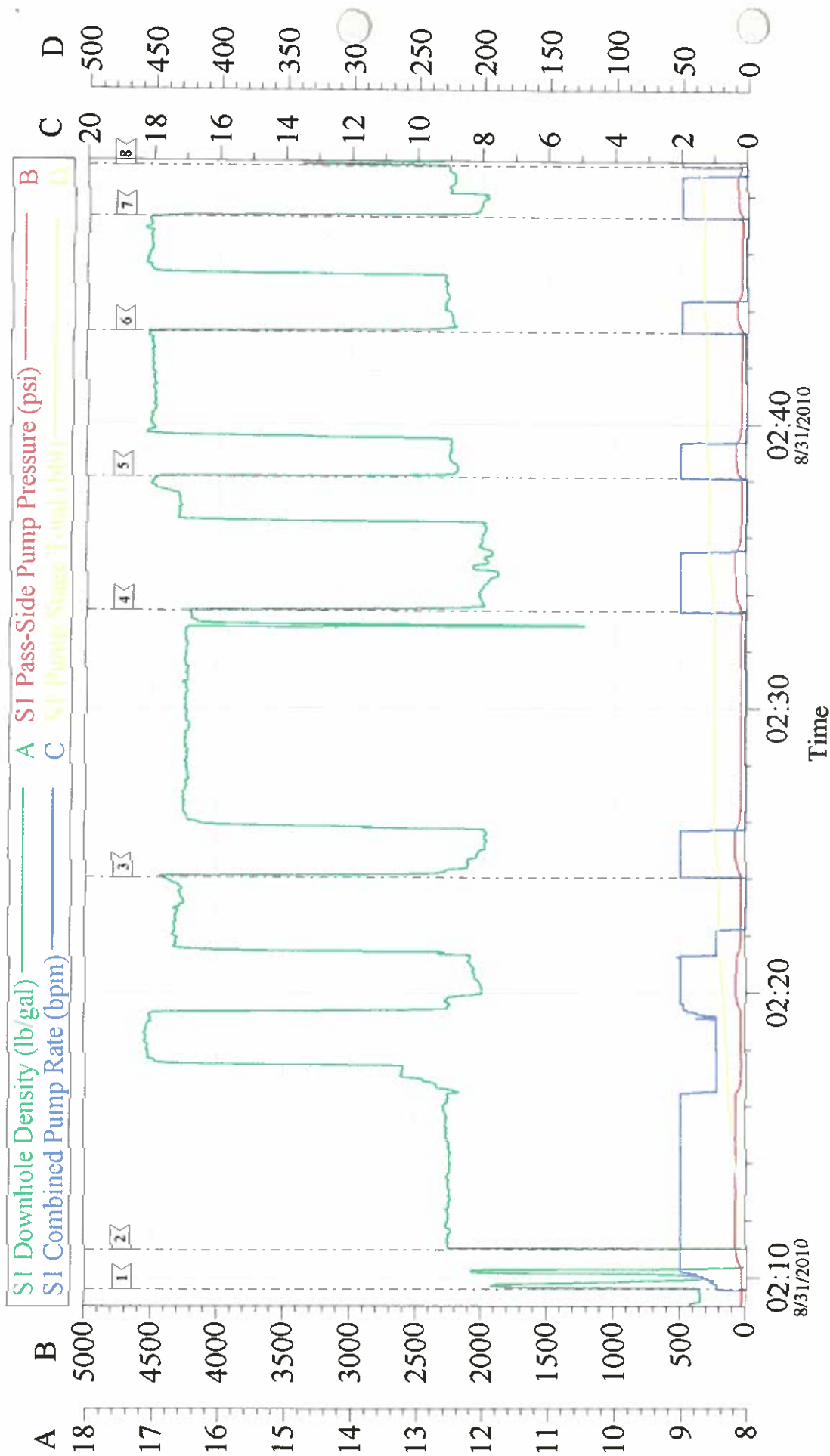
# OXY SURFACE



Local Event Log								
1	START JOB	8/30/2010 20:26:19	2	TEST LINES	8/30/2010 20:29:06	3	PUMP SPACER	8/30/2010 20:34:19
4	PUMP SUPER FLUSH	8/30/2010 20:41:46	5	PUMP SPACER	8/30/2010 20:47:31	6	PUMP LEAD CEMENT	8/30/2010 20:55:32
7	PUMP TAIL CEMENT	8/30/2010 22:01:21	8	DROP PLUG	8/30/2010 22:16:12	9	PUMP DISPLACEMENT	8/30/2010 22:17:03
10	SLOW RATE	8/30/2010 22:53:07	11	BUMP PLUG	8/30/2010 23:00:00	12	CHECK FLOATS	8/30/2010 23:04:41
13	REBUMP PLUG	8/30/2010 23:10:28	14	CHECK FLOATS	8/30/2010 23:12:57	15	PRESSURE TEST CASING	8/30/2010 23:17:38
16	PUMP PARISTE	8/30/2010 23:50:23	17	END JOB	8/31/2010 00:02:31			

Customer:	Job Date:	Sales Order #:
Well Description:	30-Aug-2010	7545818
Company Rep:	Job Type:	ADC Used:
	Cement Supervisor:	Elite #:

# OXY TOP OUT



Customer:	Job Date:	Sales Order #:
Well Description:	31-Aug-2010	7545818
Company Rep:	Job Type:	ADC Used:
	Cement Supervisor:	Elite #: