
OXY GRAND JUNCTION EBUSINESS

**CC 697-09-58
GRAND VALLEY
Garfield County , Colorado**

Cement Surface Casing
21-Jun-2010

Job Site Documents

The Road to Excellence Starts with Safety

Sold To #: 344034	Ship To #: 2790368	Quote #:	Sales Order #: 7447823
Customer: OXY GRAND JUNCTION EBUSINESS	Customer Rep: SANCHEZ, O.B.		
Well Name: CC	Well #: 697-09-58	API/UWI #: 05-045-16227	
Field: GRAND VALLEY	City (SAP): PARACHUTE	County/Parish: Garfield	State: Colorado
Lat: N 39.531 deg. OR N 39 deg. 31 min. 51.809 secs.	Long: W 108.224 deg. OR W -109 deg. 46 min. 35.389 secs.		
Contractor: OXY	Rig/Platform Name/Num: H&P 330		
Job Purpose: Cement Surface Casing			
Well Type: Development Well	Job Type: Cement Surface Casing		
Sales Person: DUNNING, DUSTIN	Srvc Supervisor: STILLSON, ERIC	MBU ID Emp #: 393789	

Job Personnel

HES Emp Name	Exp Hrs	Emp #	HES Emp Name	Exp Hrs	Emp #	HES Emp Name	Exp Hrs	Emp #
BORSZICH, STEPHEN A	29	412388	DUBON, TODD N	29	443351	GAMBLE, BENJAMIN T	19	446666
HAYES, DIRK A	29	336768	STILLSON, ERIC W	29	393789	WEAVER, CARLTON Russell	29	457698

Equipment

HES Unit #	Distance-1 way	HES Unit #	Distance-1 way	HES Unit #	Distance-1 way	HES Unit #	Distance-1 way
10616651C	mile	10713212	mile	10741123	mile	10784064	mile
10822535	mile	10856450	mile	10856464	mile	10867322	mile
10951246	mile	10995025	mile	10998512	mile	11006314	mile

Job Hours

Date	On Location Hours	Operating Hours	Date	On Location Hours	Operating Hours	Date	On Location Hours	Operating Hours
06-20-10	19	7	06-21-10	10	3			

TOTAL	Total is the sum of each column separately							
-------	--	--	--	--	--	--	--	--

Job

Job Times

Formation Name	Formation Depth (MD)	Top	Bottom	Form Type	Job depth MD	Job Depth TVD	Water Depth	Perforation Depth (MD)	From	To	Called Out	Date	Time	Time Zone
				BHST	2697. ft	2697. ft	Wk Ht Above Floor	4. ft			On Location	20 - Jun - 2010	05:00	MST
											Job Started	20 - Jun - 2010	11:20	MST
											Job Completed	21 - Jun - 2010	08:41	MST
											Departed Loc	21 - Jun - 2010	10:30	MST

Well Data

Description	New / Used	Max pressure psig	Size in	ID in	Weight lbm/ft	Thread	Grade	Top MD ft	Bottom MD ft	Top TVD ft	Bottom TVD ft
OPEN HOLE SECTION				14.75					2730.		
SURFACE CASING	Unknown		9.625	8.921	36.				2697.		

Sales/Rental/3rd Party (HES)

Description	Qty	Qty uom	Depth	Supplier
PLUG,CMTG,TOP,9 5/8,HWE,8.16 MIN/9.06 MA	1	EA		
R/A DENSOMETER W/CHART RECORDER,/JOB,ZI	1	JOB		
ADC (AUTO DENSITY CTRL) SYS, /JOB,ZI	1	JOB		

Tools and Accessories

Type	Size	Qty	Make	Depth	Type	Size	Qty	Make	Depth	Type	Size	Qty	Make
Guide Shoe					Packer					Top Plug	9.625	1	
Float Shoe					Bridge Plug					Bottom Plug			
Float Collar					Retainer					SSR plug set			
Insert Float										Plug Container	9.625	1	
Stage Tool										Centralizers			

Miscellaneous Materials											
Gelling Agt		Conc		Surfactant		Conc		Acid Type		Qty	Conc %
Treatment Fld		Conc		Inhibitor		Conc		Sand Type		Size	Qty
Fluid Data											
Stage/Plug #: 1											
Fluid #	Stage Type	Fluid Name	Qty	Qty uom	Mixing Density lbm/gal	Yield ft ³ /sk	Mix Fluid Gal/sk	Rate bbl/min	Total Mix Fluid Gal/sk		
1	WATER SPACER		20.00	bbl	8.33	.0	.0	5.0			
2	SUPER FLUSH 101	SUPER FLUSH 101 - SBM (12199)	20.00	bbl	10.	.0	.0	5.0			
3	WATER SPACER		20.00	bbl	8.33	.0	.0	6.0			
4	Lead Cement	VERSACEM (TM) SYSTEM (452010)	1240.0	sacks	12.3	2.33	12.62	7.0	12.62		
	12.62 Gal	FRESH WATER									
5	Tail Cement	VERSACEM (TM) SYSTEM (452010)	160.0	sacks	12.8	2.07	10.67	6.5	10.67		
	10.67 Gal	FRESH WATER									
6	DISPLACEMENT		205.00	bbl	8.33	.0	.0	6.5			
Calculated Values			Pressures			Volumes					
Displacement	204.6	Shut In: Instant		Lost Returns	838	Cement Slurry	785	Pad			
Top Of Cement	SURFACE	5 Min		Cement Returns	2	Actual Displacement	204	Treatment			
Frac Gradient		15 Min		Spacers	60	Load and Breakdown		Total Job			
Rates											
Circulating	RIG	Mixing	6.5	Displacement	6.5	Avg. Job	6.5				
Cement Left In Pipe	Amount	50 ft	Reason	Shoe Joint							
Frac Ring # 1 @	ID	Frac ring # 2 @	ID	Frac Ring # 3 @	ID	Frac Ring # 4 @	ID				
The Information Stated Herein Is Correct				Customer Representative Signature							

The Road to Excellence Starts with Safety

Sold To #: 344034		Ship To #: 2790368		Quote #:		Sales Order #: 7447823	
Customer: OXY GRAND JUNCTION EBUSINESS				Customer Rep: SANCHEZ, O.B.			
Well Name: CC			Well #: 697-09-58			API/UWI #: 05-045-16227	
Field: GRAND VALLEY		City (SAP): PARACHUTE		County/Parish: Garfield		State: Colorado	
Legal Description:							
Lat: N 39.531 deg. OR N 39 deg. 31 min. 51.809 secs.				Long: W 108.224 deg. OR W -109 deg. 46 min. 35.389 secs.			
Contractor: OXY			Rig/Platform Name/Num: H&P 330				
Job Purpose: Cement Surface Casing						Ticket Amount:	
Well Type: Development Well				Job Type: Cement Surface Casing			
Sales Person: DUNNING, DUSTIN				Srvc Supervisor: STILLSON, ERIC		MBU ID Emp #: 393789	

Activity Description	Date/Time	Cht #	Rate bbl/ min	Volume bbl		Pressure psig		Comments
				Stage	Total	Tubing	Casing	
Call Out	06/20/2010 00:00							9 5/8 SURFACE, OXY, H&P 330, CC 697-09- 58.
Pre-Convoy Safety Meeting	06/20/2010 02:30							ENTIRE CREW, OBSERVE ALL SAFE DRIVING PROCEDURES
Arrive At Loc	06/20/2010 05:00							ARRIVED EARLY, ON LOCATION TIME 06:00.
Assessment Of Location Safety Meeting	06/20/2010 05:05							REVIEWED EMERGENCY PLAN, ASSESSED WORK AREA AND SPOTTED EQUIPMENT AFTER BLOWING TAIL CEMENT INTO BIN.
Pre-Rig Up Safety Meeting	06/20/2010 05:25							ENTIRE CREW, WALKED THROUGH RIG UP LOOKING FOR HAZARDS.
Rig-Up Equipment	06/20/2010 05:30							1 PICK UP, 1 HT400 PUMP TRUCK, 2 BULK CEMENT BINS, 1 SUPERFLUSH TRANSPORT, 1 QUICK LATCH HEAD WITH PLUG.
Pre-Job Safety Meeting	06/20/2010 10:50							ENTIRE CREW, CO REP AND RIG CREW.
Start Job	06/20/2010 11:20							TD 2730 TP 2697 SJ 50 FC 2647 MW 8.7 PPG, 9 5/8 36# CASING IN 14 3/4 HOLE.
Pump Water	06/20/2010 11:21		2	2			35.0	FILL LINES BEFORE TESTING

Activity Description	Date/Time	Cht #	Rate bbl/ min	Volume bbl		Pressure psig		Comments
				Stage	Total	Tubing	Casing	
Pressure Test	06/20/2010 11:24		0.5	0.1			2750.0	HELD PRESSURE FOR 2 MIN, PRESSURE HELD, NO LEAKS.
Pump Spacer 1	06/20/2010 11:27		5	20			145.0	FRESH WATER
Pump Spacer 2	06/20/2010 11:31		5	20			175.0	SUPER FLUSH 101, CHARGED FROM ON LOCATION TIME OF 06:00 TO BUMP PLUG AT 13:57, 8 HRS CHARGED.
Pump Spacer 1	06/20/2010 11:35		6	20			200.0	FRESH WATER, PUMPED AT 2 BPM UNTIL CEMENT TUB UP TO WEIGHT AND WEIGHED WITH SCALES, SPED RATE TO 6 BPM AT 14 BBLS GONE.
Pump Lead Cement	06/20/2010 11:43		7	514.6			265.0	1240 SKS VERSACEM, 12.3 PPG, 2.33 CUFT/SK, 12.62 GAL/SK. ADDED 10 BOXES TUFF FIBER ON THE FLY, TUFF FIBER CHARGED ON PREVIOUS TICKET, SLOWED TO 6.5 BPM AT 400 BBLS GONE PER CO REP.
Pump Tail Cement	06/20/2010 13:10		6.5	59			265.0	160 SKS VERSACEM, 12.8 PPG, 2.07 CUFT/SK, 10.67 GAL/SK.
Shutdown	06/20/2010 13:21							
Drop Top Plug	06/20/2010 13:21							VARIFIED PLUG LEFT CONTAINER.
Pump Displacement	06/20/2010 13:22		6.5	204.6			501.0	FRESH WATER, CAUGHT PRESSURE AT 105 BBLS GONE.
Slow Rate	06/20/2010 13:52		3	190			330.0	SLOWED RATE TO 3 BPM AT 190 BBLS GONE, THEN TO 2 BPM AT 195 BBLS GONE TO BUMP PLUG.

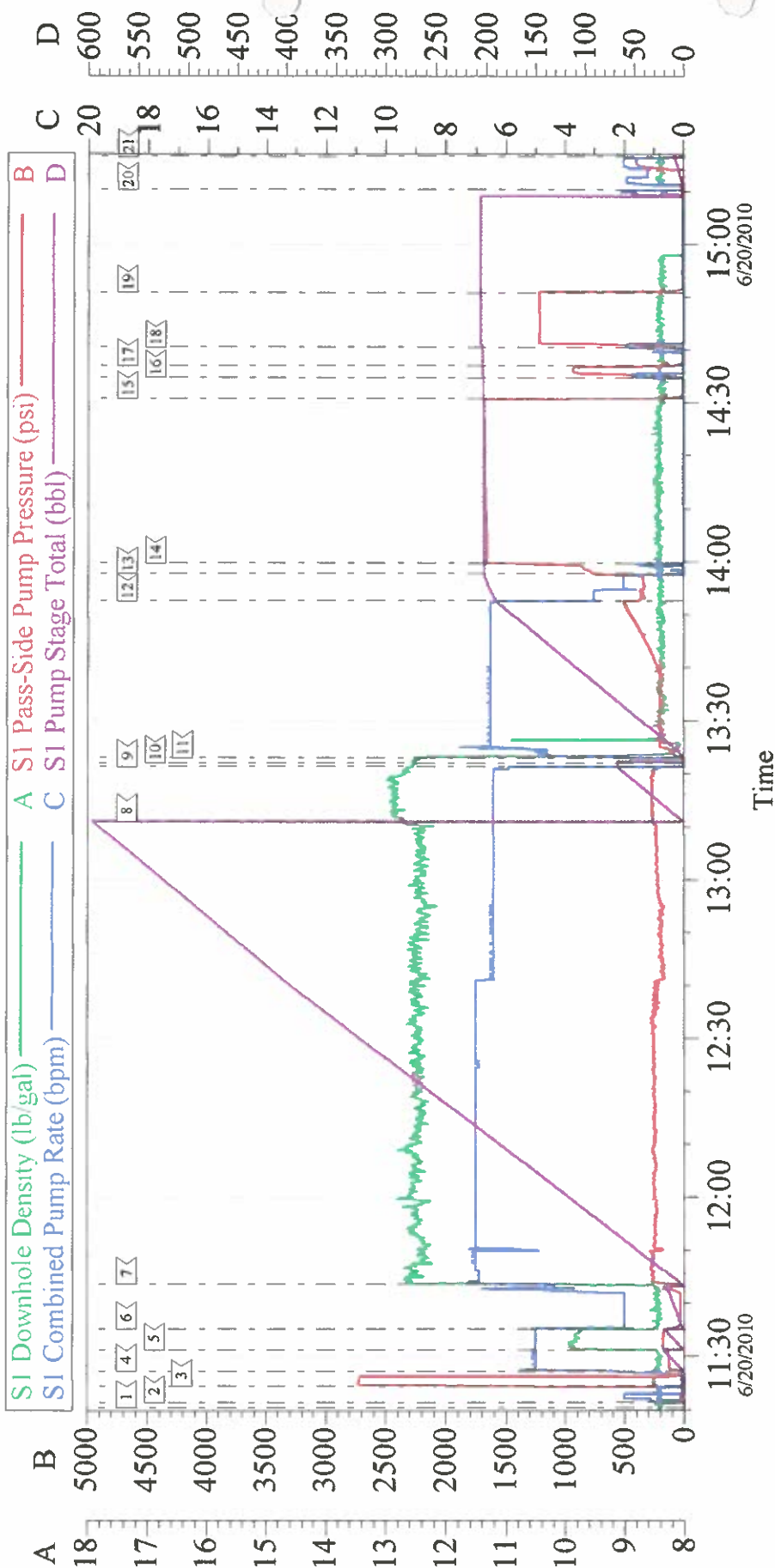
Activity Description	Date/Time	Cht #	Rate bbl/min	Volume bbl		Pressure psig		Comments
				Stage	Total	Tubing	Casing	
Bump Plug	06/20/2010 13:57		2	204.6			850.0	PLUG LANDED AT 330 PSI, BUMPED UP TO 850 PSI AND HELD FOR 1 MIN, THEN PRESSURED UP TO 1650 PSI AND HELD FOR 30 MIN TO TEST CASING PER CO REP.
Check Floats	06/20/2010 14:30							FLOATS DID NOT HOLD, GOT 1.5 BBLS OF WATER BACK TO TRUCK
Bump Plug	06/20/2010 14:34		2	1.5			900.0	REBUMPED UP TO 900 PSI AND HELD FOR 2 MIN.
Check Floats	06/20/2010 14:36							FLOATS DID NOT HOLD, GOT 1.5 BBLS OF WATER BACK TO TRUCK
Bump Plug	06/20/2010 14:40		2	1.5			1200.0	REBUMPED UP TO 1200 PSI AND HELD PRESSURE FOR 10 MIN.
Check Floats	06/20/2010 14:50							FLOATS HELD THIS TIME, WHEN RELEASED PRESSURE GOT 1 BBL OF WATER BACK TO TRUCK.
Safety Huddle	06/20/2010 14:55							RIGGED UP TO PUMP DOWN PARASITE
Pump Water	06/20/2010 15:10		2	10			390.0	PUMPED 10 BBLS OF WATER WITH 10 LBS SUGAR TO CLEAR PARASITE STRING. PUMPED AT 2 BPM, CAUGHT PRESSURE AT 6 BBLS GONE, PRESSURE SPIKED AT 390 PSI.
Shutdown	06/20/2010 15:16							

Activity Description	Date/Time	Cht #	Rate bbl/min	Volume bbl		Pressure psig		Comments
				Stage	Total	Tubing	Casing	
Safety Huddle	06/20/2010 15:20							RIGGED DOWN FLOOR AND RIGGED UP TO PUMP TOPOUT. DID NOT USE ANY NEW 1" PIPE. WAIT UNTIL RIG SKIDS TO PUMP FIRST TOPOUT.
Pump Cement	06/20/2010 18:52		3	35			110.0	APPROX 111 SKS TOPOUT LEFT OVER FROM PREVIOUS WELL PUMPED AT 14.0 PPG, 1.78 CUFT/SK, 7.67 GAL/SK, WAS CHARGED ON PREVIOUS WELL TICKET.
Pump Water	06/20/2010 19:07		3	2			100.0	PUMPED 2 BBLS OF WATER BEHIND TO CLEAN LINES.
Shutdown	06/20/2010 19:08							NO CEMENT TO SURFACE, WAIT 2 HRS TO PUMP MORE TOPOUT.
Pump Cement	06/20/2010 20:32		3	44			129.0	137 SKS TOPOUT LEFT OVER FROM PREVIOUS WELL PUMPED AT 14.0 PPG, 1.78 CUFT/SK, 7.67 GAL/SK, WAS CHARGED ON PREVIOUS WELL TICKET.
Pump Water	06/20/2010 20:49		2	2			100.0	PUMPED 2 BBLS OF WATER BEHIND TO CLEAN LINES.
Shutdown	06/20/2010 20:50							NO CEMENT TO SURFACE, WAIT 2 HRS TO PUMP MORE TOPOUT. CALLED FOR MORE TOPOUT PER CO REP, 350 SKS MOUNTAIN G CEMENT AND 14 SKS CALCIUM CHLORIDE.

Activity Description	Date/Time	Cht #	Rate bbl/min	Volume bbl		Pressure psig		Comments
				Stage	Total	Tubing	Casing	
Pump Cement	06/20/2010 22:42		3	44			145.0	137 SKS TOPOUT LEFT OVER FROM PREVIOUS WELL PUMPED AT 14.0 PPG, 1.78 CUFT/SK, 7.67 GAL/SK, WAS CHARGED ON PREVIOUS WELL TICKET.
Pump Water	06/20/2010 22:58		3	2			100.0	PUMPED 2 BBLS OF WATER BEHIND TO CLEAN LINES.
Shutdown	06/20/2010 22:59							NO CEMENT TO SURFACE, WAIT FOR TOPOUT TO ARRIVE.
Pump Cement	06/21/2010 02:19		2.5	36			118.0	TOPOUT ARRIVED, PUMPED 175 SKS, MOUNTAIN G CEMENT 15.8 PPG, 1.15 CUFT/SK, 5.0 GAL/SK, ADDED 7 SKS CACL ON THE FLY.
Pump Water	06/21/2010 02:33		2.5	2			90.0	PUMPED 2 BBLS OF WATER BEHIND TO CLEAN LINES.
Shutdown	06/21/2010 02:34							NO CEMENT TO SURFACE, CALLED FOR MORE TOPOUT PER CO REP, 350 SKS MOUNTAIN G CEMENT AND 14 SKS CALCIUM CHLORIDE.
Pump Cement	06/21/2010 04:42		2.5	36			120.0	175 SKS, MOUNTAIN G CEMENT 15.8 PPG, 1.15 CUFT/SK, 5.0 GAL/SK, ADDED 7 SKS CACL ON THE FLY.
Pump Water	06/21/2010 04:56		2.5	2			90.0	PUMPED 2 BBLS OF WATER BEHIND TO CLEAN LINES.
Shutdown	06/21/2010 04:57							NO CEMENT TO SURFACE, WAIT FOR NEXT TOPOUT TRUCK TO ARRIVE.

Activity Description	Date/Time	Cht #	Rate bbl/ min	Volume bbl		Pressure psig		Comments
				Stage	Total	Tubing	Casing	
Pump Cement	06/21/2010 08:29		2.5	12			120.0	350 SKS MOUNTAIN G CEMENT 15.8 PPG, 1.15 CUFT/SK, 5.0 GAL/SK, PUMPED 12 BBLS AND GOT CEMENT TO SURFACE.
Shutdown	06/21/2010 08:35							WAIT TO SEE IF CEMENT WOULD FALL BACK.
Pump Cement	06/21/2010 08:40		1	2			30.0	PUMPED 2 MORE BBLS AND SHUTDOWN, CEMENT DID NOT FALL BACK. 14 BBLS TOTAL PUMPED OUT OF THE 350 SKS. PUMPED 6 BBLS TO PIT.
Shutdown	06/21/2010 08:41							20 BBLS TOTAL USED FROM THE 350 SKS. 98 SKS CEMENT AND 3 MORE SKS CACL WILL BE CHARGED. 252 SKS TOPOUT AND 11 SKS CACL WILL BE RETURNED.
End Job	06/21/2010 08:42							40 LBS SUGAR USED.
Post-Job Safety Meeting (Pre Rig-Down)	06/21/2010 08:50							ENTIRE CREW
Rig-Down Equipment	06/21/2010 09:15							BLEW DOWN BOTH BINS ON LOCATION.
Pre-Convoy Safety Meeting	06/21/2010 10:25							ENTIRE CREW.
Crew Leave Location	06/21/2010 10:30							THANK YOU FOR USING HALLIBURTON, ERIC STILLSON AND CREW.

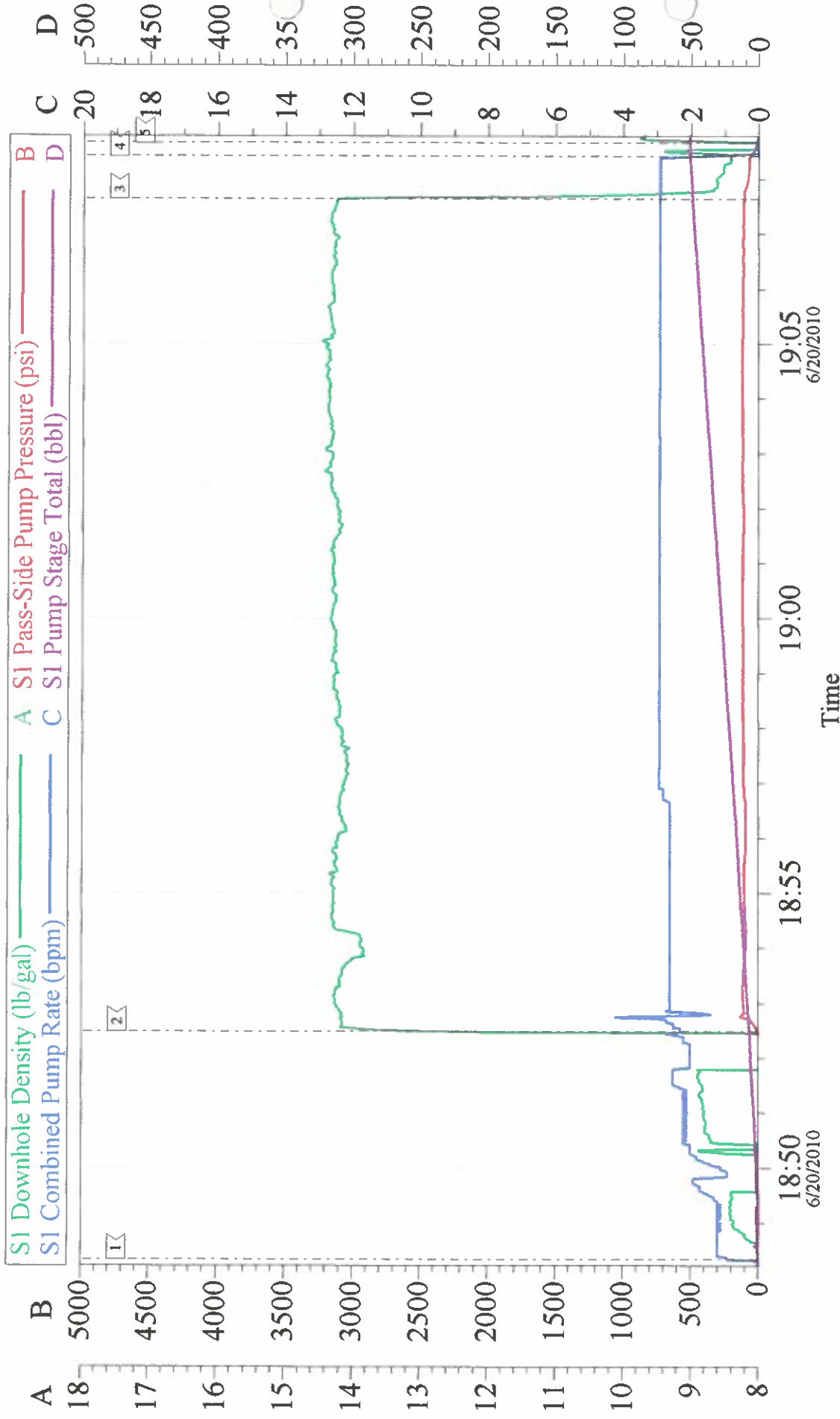
OXY 9 5/8 SURFACE



Local Event Log			
1 START JOB	11:20:23	2 FILL LINES	11:21:18
4 PUMP H2O SPACER	11:27:12	5 PUMP SUPERFLUSH	11:31:11
7 PUMP LEAD CEMENT	11:43:37	8 PUMP TAIL CEMENT	13:10:56
10 DROP PLUG	13:21:58	11 PUMP DISPLACEMENT	13:22:54
13 BUMP PLUG	13:57:38	14 CASING TEST	13:59:35
16 REBUMP PLUG	14:34:42	17 CHECK FLOATS	14:36:57
19 CHECK FLOATS	14:50:46	20 PUMP SUGAR WATER	15:10:12
		21 SHUTDOWN/WAIT TO TOPOUT	15:16:35

Customer: OXY	Job Date: 20-Jun-2010	Sales Order #: 7447823
Well Description: CC 697-09-58	Job Type: SURFACE	ADC Used: YES
Company Rep: O.B. SANCHEZ	Cement Supervisor: ERIC STILLSON	Elite #: 4/TODD DUBON

OXY TOPOUT 1

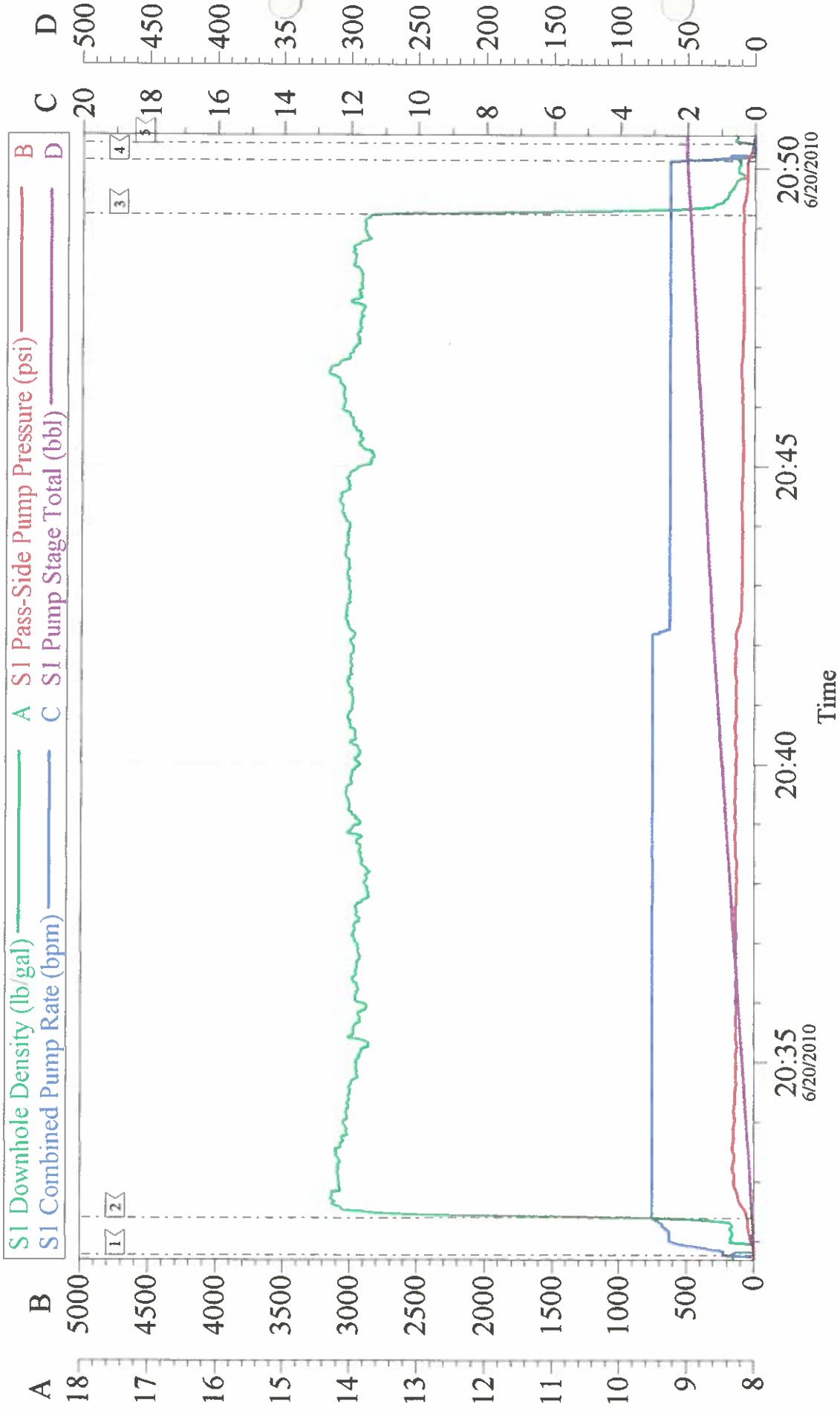


Customer: OXY
Well Description: CC 697-09-58
Company Rep: O.B. SANCHEZ

Job Date: 20-Jun-2010
Job Type: SURFACE
Cement Supervisor: ERIC STILLSON

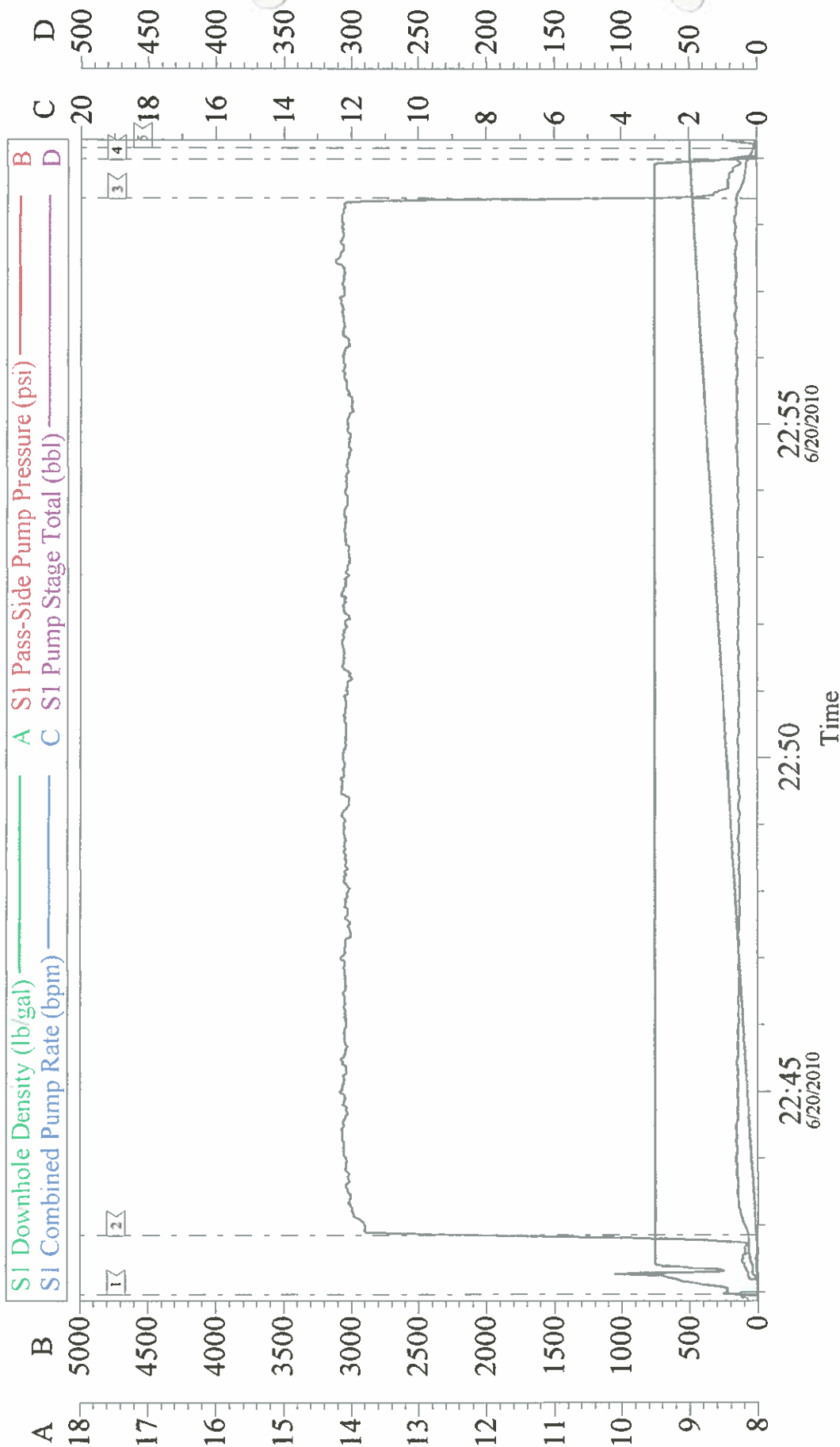
Sales Order #: 7447823
ADC Used: YES
Elite #: 4/TODD DUBON

OXY TOPOUT 2



Customer: OXY	Job Date: 20-Jun-2010	Sales Order #: 7447823
Well Description: CC 697-09-58	Job Type: SURFACE	ADC Used: YES
Company Rep: O.B. SANCHEZ	Cement Supervisor: ERIC STILLSON	Elite #: 4TODDD DUBON

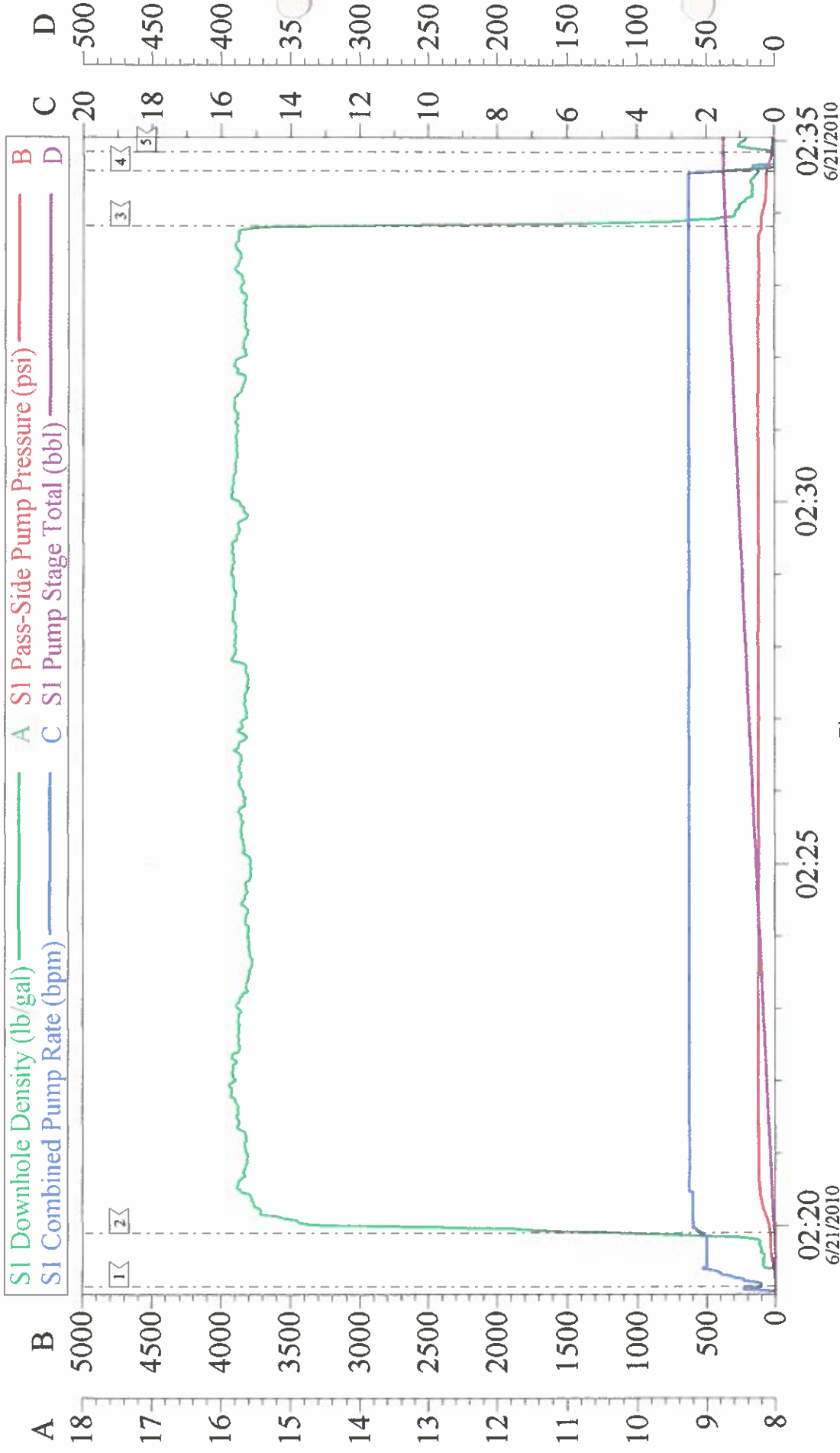
OXY TOPOUT 3



Local Event Log			
<input type="checkbox"/> 1 FILL LINES	22:41:58	<input type="checkbox"/> 2 PUMP CEMENT	22:42:50
<input type="checkbox"/> 4 SHUTDOWN	22:58:58	<input type="checkbox"/> 5 WAIT TO TOPOUT	22:59:09
		<input type="checkbox"/> 3 PUMP WATER BEHIND	22:58:23

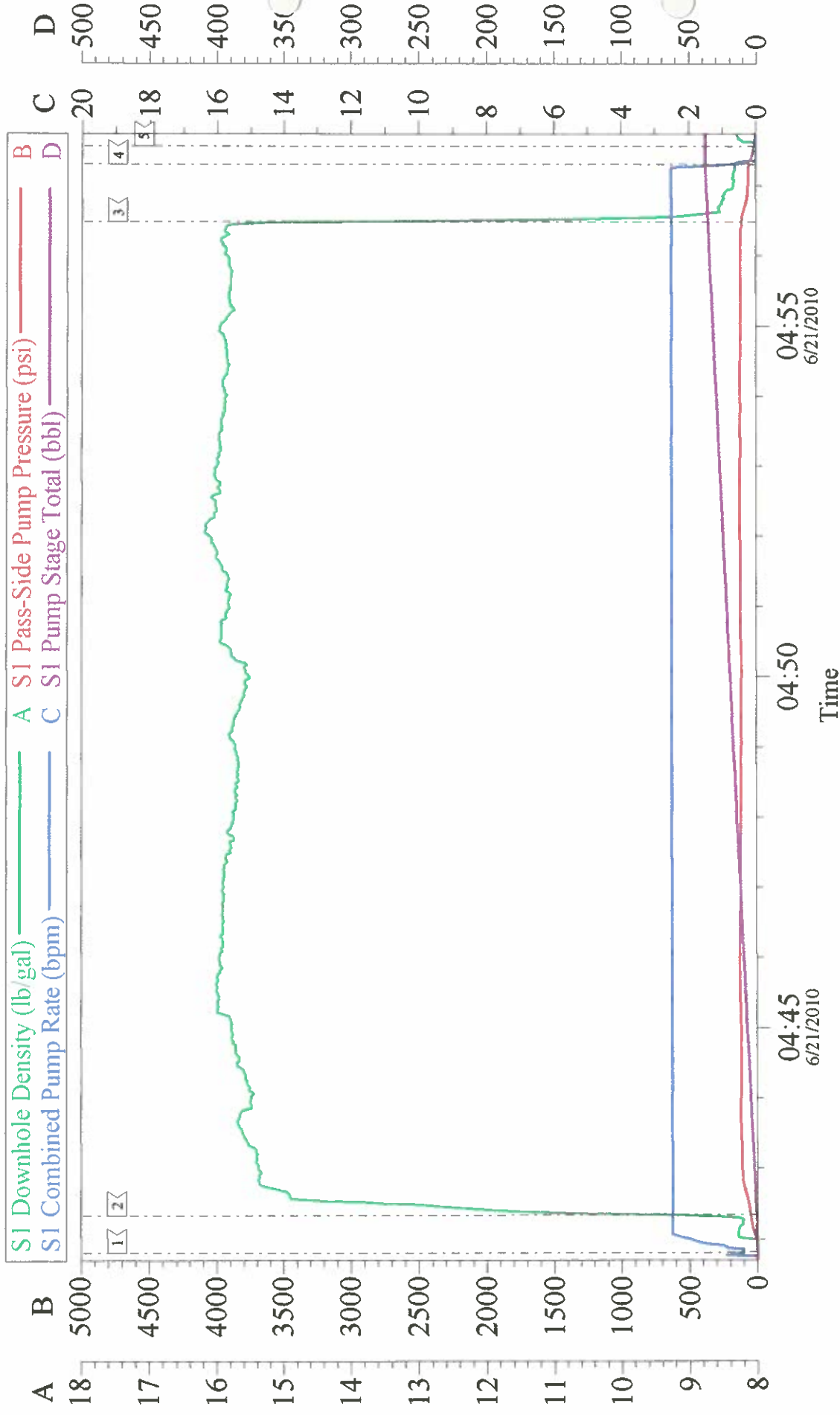
Customer: OXY Well Description: CC 697-09-58 Company Rep: O.B. SANCHEZ	Job Date: 20-Jun-2010	Sales Order #: 7447823
	Job Type: SURFACE	ADC Used: YES
	Cement Supervisor: ERIC STILLSON	Elite #: 4/TODD DUBON

OXY TOPOUT 4



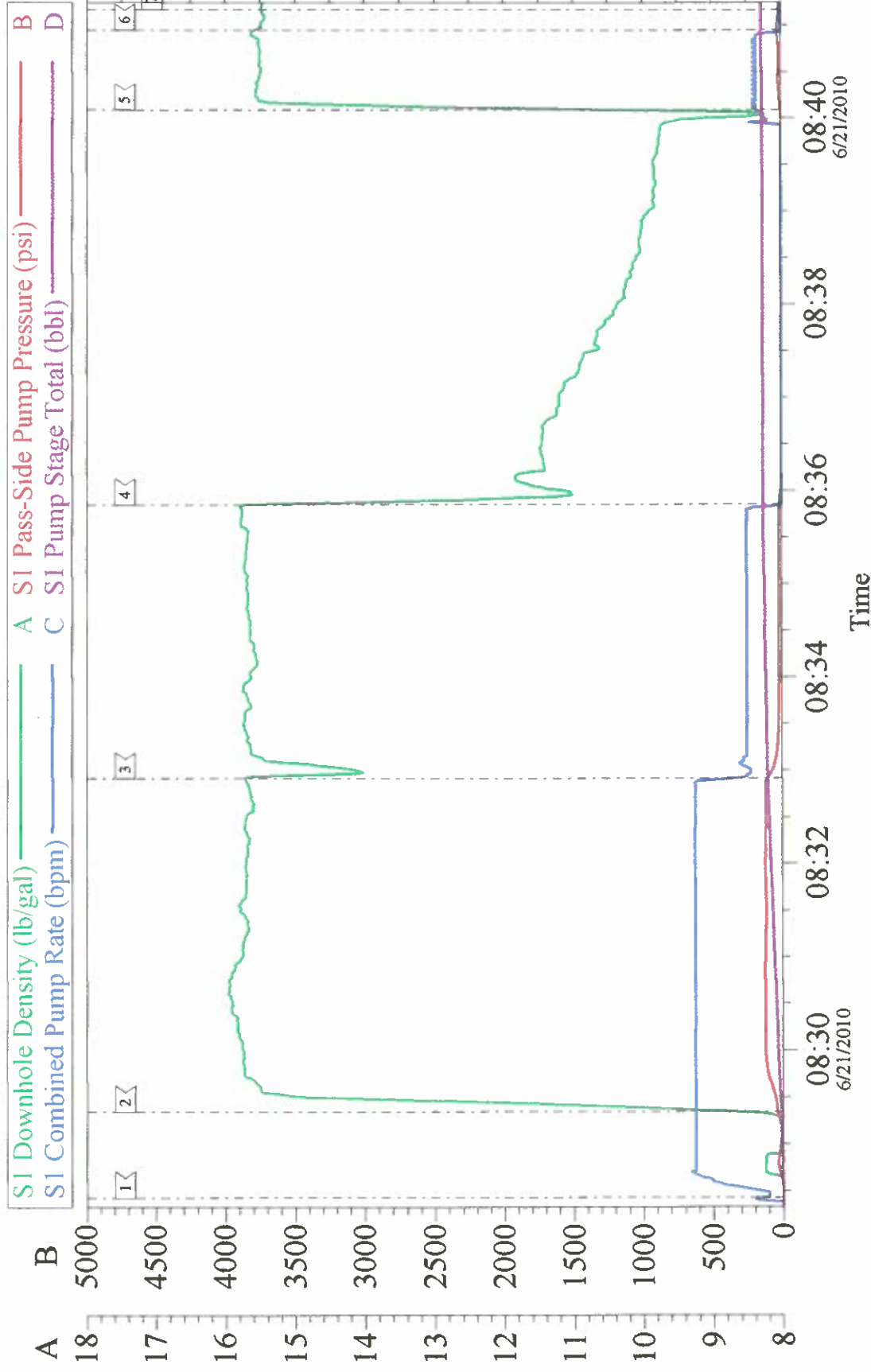
Customer: OXY	Job Date: 21-Jun-2010	Sales Order #: 7447823
Well Description: CC 697-09-58	Job Type: SURFACE	ADC Used: YES
Company Rep: O.B. SANCHEZ	Cement Supervisor: ERIC STILLSON	Elite #: 4/TODD DUBON

OXY TOPOUT 5



Customer: OXY	Job Date: 21-Jun-2010	Sales Order #: 7447823
Well Description: CC 697-09-58	Job Type: SURFACE	ADC Used: YES
Company Rep: O.B. SANCHEZ	Cement Supervisor: ERIC STILLSON	Elite #: 4/TODD DUBON

OXY TOPOUT 6



Local Event Log								
1	FILL LINES	08:28:26	2	PUMP CEMENT	08:29:21	3	CEMENT TO SURFACE	08:32:55
4	SHUTDOWN	08:35:51	5	PUMP CEMENT	08:40:05	6	SHUTDOWN	08:40:57
7	END JOB	08:41:10						

Customer:	OXY	Job Date:	21-Jun-2010	Sales Order #:	7447823
Well Description:	CC 697-09-58	Job Type:	SURFACE	ADC Used:	YES
Company Rep:	O.B. SANCHEZ	Cement Supervisor:	ERIC STILLSON	Elite #:	4/TODD DUBON