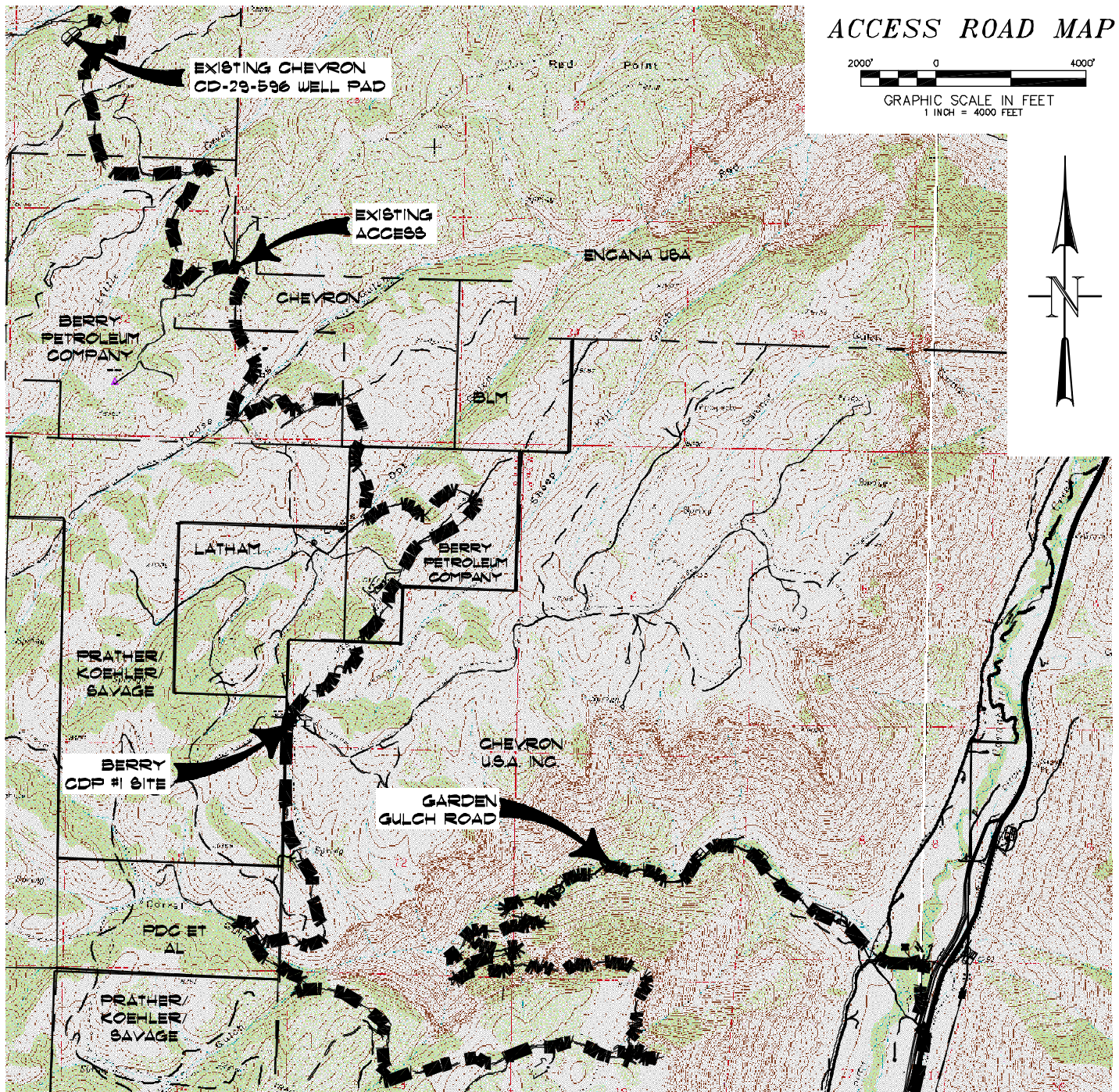
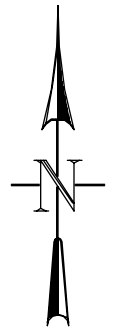


ACCESS ROAD MAP

2000' 0 4000'
GRAPHIC SCALE IN FEET
1 INCH = 4000 FEET



ACCESS:

FROM THE INTERSECTION OF HIGHWAY 6 & 24 AND COUNTY ROAD 215 AT PARACHUTE, PROCEED IN A GENERAL NORTHWESTERLY DIRECTION ALONG COUNTY ROAD 215 ± 7.2 MILES TO AN INTERSECTION WITH A DIRT/GRAVEL ROAD ON THE LEFT, PROCEED LEFT IN A GENERAL NORTHWESTERLY DIRECTION ± 350 FEET TO AN INTERSECTION WITH A DIRT/GRAVEL ROAD ON THE RIGHT, PROCEED RIGHT IN A GENERAL NORTHERLY DIRECTION ± 0.3 MILES TO AN INTERSECTION WITH A DIRT/GRAVEL ROAD ON THE LEFT, PROCEED LEFT IN A GENERAL WESTERLY DIRECTION CROSSING THE PARACHUTE CREEK BRIDGE, PROCEED IN A GENERAL WESTERLY DIRECTION ALONG THE GARDEN GULCH ROAD ASCENDING THRU THE BOOKCLIFFS ± 9.1 MILES TO THE BERRY CDP SITE ON THE RIGHT, CONTINUE FORWARD PAST THE BERRY CDP SITE IN A GENERAL NORTHEASTERLY DIRECTION ± 6.5 MILES TO AN INTERSECTION WITH THE EXISTING CHEVRON #CD-29-596 WELL PAD ON THE LEFT, BEING THE LOCATION.



CONSTRUCTION SURVEYS, INC.
0012 SUNRISE BLVD.
SILT, CO 81652
(970)876-5753

Chevron CD-29-596
NENW, SECTION 29, T. 5 S., R. 96 W.
BERRY PETROLEUM COMPANY

SCALE: 1" = 4000'

SHEET 4 OF 11