

---

# **OXY GRAND JUNCTION EBUSINESS**

---

**CC 697-09-33B  
GRAND VALLEY  
Garfield County , Colorado**

**Cement Surface Casing  
16-Sep-2010**

**Job Site Documents**

## The Road to Excellence Starts with Safety

Sold To #: 344034	Ship To #: 344034	Quote #:	Sales Order #: 7629145
Customer: OXY GRAND JUNCTION EBUSINESS	Customer Rep: Silva, Marco		
Well Name: CC	Well #: 697-09-33B	API/UWI #: 05-045-18347	
Field: GRAND VALLEY	City (SAP): BROWNFIELD	County/Parish: Garfield	State: Colorado
Lat: N 39.536 deg. OR N 39 deg. 32 min. 9.928 secs.	Long: W 108.238 deg. OR W -109 deg. 45 min. 44.593 secs.		
Contractor: H&P Drilling	Rig/Platform Name/Num: H&P 330		
Job Purpose: Cement Surface Casing			
Well Type: Development Well	Job Type: Cement Surface Casing		
Sales Person: DUNNING, DUSTIN	Srv Supervisor: REEVES, BRANDON	MBU ID Emp #: 287883	

## Job Personnel

HES Emp Name	Exp Hrs	Emp #	HES Emp Name	Exp Hrs	Emp #	HES Emp Name	Exp Hrs	Emp #
BRUN, JUSTIN M	17	459269	LUNCEFORD, STEVEN John	5	457512	REEVES, BRANDON W	17	287883
SMITH, CHRISTOPHER Scott	17	452619						

## Equipment

HES Unit #	Distance-1 way	HES Unit #	Distance-1 way	HES Unit #	Distance-1 way	HES Unit #	Distance-1 way
10567589C	120 mile	10822535	120 mile	10856450	120 mile	10856464	120 mile
10867322	120 mile	10995027	120 mile	10998512	120 mile		

## Job Hours

Date	On Location Hours	Operating Hours	Date	On Location Hours	Operating Hours	Date	On Location Hours	Operating Hours
09/15/2010	6.5	0	09/16/2010	10	7			

TOTAL Total is the sum of each column separately

## Job

## Job Times

Formation Name	Formation Depth (MD)	Top	Bottom	Form Type	Job depth MD	Job Depth TVD	Water Depth	Perforation Depth (MD)	From	To	Called Out	Date	Time	Time Zone
				BHST	2723. ft	2723. ft	3. ft				On Location	15 - Sep - 2010	11:45	MST
											Job Started	15 - Sep - 2010	16:00	MST
											Job Completed	16 - Sep - 2010	01:40	MST
											Deparred Loc	16 - Sep - 2010	00:00	MST

## Well Data

Description	New / Used	Max pressure psig	Size in	ID in	Weight lbm/ft	Thread	Grade	Top MD ft	Bottom MD ft	Top TVD ft	Bottom TVD ft
-------------	------------	-------------------	---------	-------	---------------	--------	-------	-----------	--------------	------------	---------------

Sales/Rental/3<sup>rd</sup> Party (HES)

Description	Qty	Qty uom	Depth	Supplier
PLUG,CMTG,TOP,9 5/8,HWE,8.16 MIN/9.06 MA	1	EA		
R/A DENSOMETER W/CHART RECORDER,/JOB,ZI	1	JOB		
PORT. DATA ACQUIS. W/OPTICEM RT W/HES	1	EA		
ADC (AUTO DENSITY CTRL) SYS, /JOB,ZI	1	JOB		

## Tools and Accessories

Type	Size	Qty	Make	Depth	Type	Size	Qty	Make	Depth	Type	Size	Qty	Make
Guide Shoe					Packer					Top Plug	9 5/8"	1	
Float Shoe					Bridge Plug					Bottom Plug			
Float Collar					Retainer					SSR plug set			
Insert Float										Plug Container	9 5/8"	1	
Stage Tool										Centralizers			

## Miscellaneous Materials

Gelling Agt	Conc	Surfactant	Conc	Acid Type	Qty	Conc	%
Treatment Fld	Conc	Inhibitor	Conc	Sand Type	Size	Qty	

Fluid Data									
Stage/Plug #: 1									
Fluid #	Stage Type	Fluid Name	Qty	Qty uom	Mixing Density lbm/gal	Yield ft <sup>3</sup> /sk	Mix Fluid Gal/sk	Rate bbl/min	Total Mix Fluid Gal/sk
1	Water Spacer	FRESH WATER SPACER	20.00	bbl	8.33	.0	.0	.0	
2	Super Flush 101	SUPER FLUSH 101 - SBM (12199)	20.00	bbl	10.	.0	.0	.0	
3	Water Spacer	FRESH WATER SPACER	20.00	bbl	.	.0	.0	.0	
4	VersaCem Lead Cement	VERSACEM (TM) SYSTEM (452010)	900.0	sacks	12.3	2.33	12.62		12.62
12.62 Gal		FRESH WATER							
5	VersaCem Tail Cement	VERSACEM (TM) SYSTEM (452010)	160.0	sacks	12.8	2.07	10.67		10.67
10.67 Gal		FRESH WATER							
6	Displacement	FRESH WATER DISPLACEMENT	206.00	bbl	.	.0	.0	.0	
7	Topout Cement	HALCEM (TM) SYSTEM (452986)	217.0	sacks	12.5	1.97	10.96		10.96
10.96 Gal		FRESH WATER							
Calculated Values			Pressures		Volumes				
Displacement	206.2	Shut In: Instant		Lost Returns		Cement Slurry	508.5	Pad	
Top Of Cement	SURFACE	5 Min		Cement Returns	20	Actual Displacement		Treatment	
Frac Gradient		15 Min		Spacers	60	Load and Breakdown		Total Job	
<b>Rates</b>									
Circulating		Mixing	6.5	Displacement	6.5	Avg. Job	6		
Cement Left In Pipe	Amount	55 ft	Reason	Shoe Joint					
Frac Ring # 1 @	ID	Frac ring # 2 @	ID	Frac Ring # 3 @	ID	Frac Ring # 4 @	ID		
The Information Stated Herein Is Correct				Customer Representative Signature					

**The Road to Excellence Starts with Safety**

<b>Sold To #:</b> 344034		<b>Ship To #:</b> 344034		<b>Quote #:</b>		<b>Sales Order #:</b> 7629145	
<b>Customer:</b> OXY GRAND JUNCTION EBUSINESS				<b>Customer Rep:</b> Silva, Marco			
<b>Well Name:</b> CC		<b>Well #:</b> 697-09-33B		<b>API/UWI #:</b> 05-045-18347			
<b>Field:</b> GRAND VALLEY		<b>City (SAP):</b> BROWNFIELD		<b>County/Parish:</b> Garfield		<b>State:</b> Colorado	
<b>Legal Description:</b>							
<b>Lat:</b> N 39.536 deg. OR N 39 deg. 32 min. 9.928 secs.				<b>Long:</b> W 108.238 deg. OR W -109 deg. 45 min. 44.593 secs.			
<b>Contractor:</b> H&P Drilling		<b>Rig/Platform Name/Num:</b> H&P 330					
<b>Job Purpose:</b> Cement Surface Casing				<b>Ticket Amount:</b>			
<b>Well Type:</b> Development Well		<b>Job Type:</b> Cement Surface Casing					
<b>Sales Person:</b> DUNNING, DUSTIN		<b>Srvc Supervisor:</b> REEVES, BRANDON		<b>MBU ID Emp #:</b> 287883			

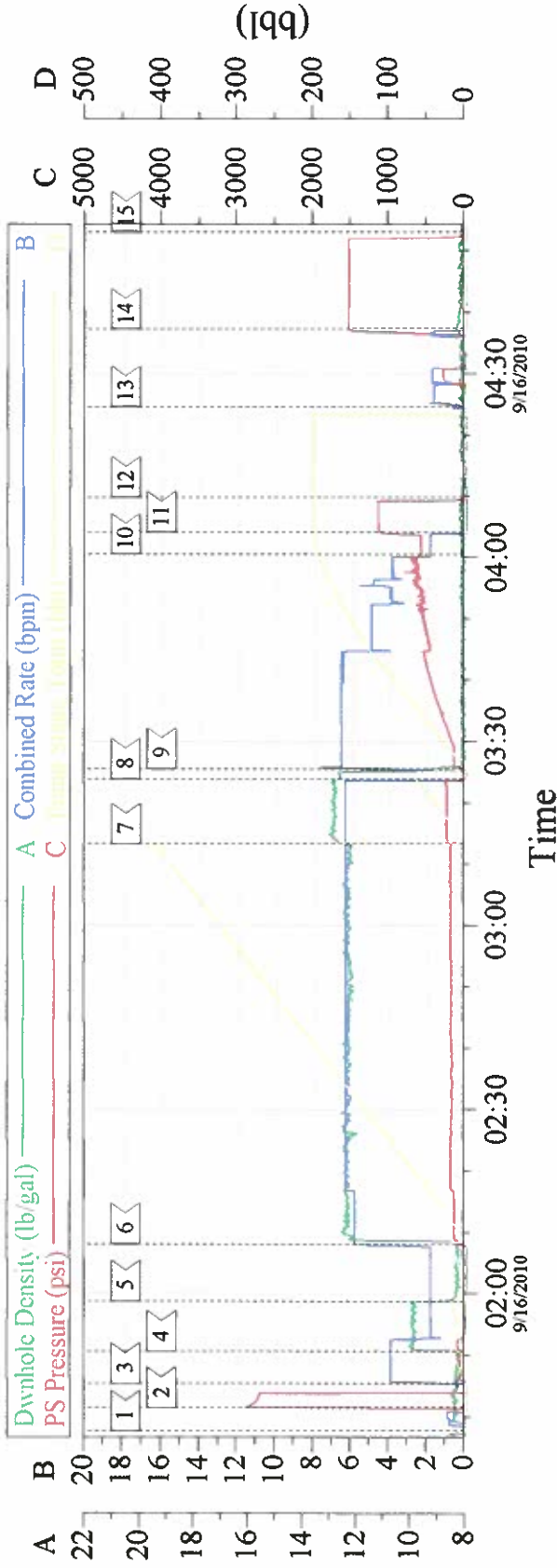
Activity Description	Date/Time	Cht #	Rate bbl/min	Volume bbl		Pressure psig		Comments
				Stage	Total	Tubing	Casing	
Call Out	09/15/2010 11:45							
Pre-Convoy Safety Meeting	09/15/2010 13:45							
Arrive at Location from Service Center	09/15/2010 16:00							
Assessment Of Location Safety Meeting	09/15/2010 16:20							
Other	09/15/2010 16:30							SPOT EQUIPMENT
Pre-Rig Up Safety Meeting	09/15/2010 16:45							
Rig-Up Equipment	09/15/2010 17:00							
Pre-Job Safety Meeting	09/16/2010 01:20							
Start Job	09/16/2010 01:40							TD-2745' TP-2723' SJ-55' MW-9.1# HOLE-14 3/4" CASING-9 5/8" 36#
Test Lines	09/16/2010 01:42						3000.0	
Pump Spacer 1	09/16/2010 01:45		4	10				FRESH WATER SPACER
Pump Spacer 2	09/16/2010 01:50		4				120.0	SUPERFLUSH 101 SPACER
Pump Spacer 1	09/16/2010 01:58		6				140.0	FRESH WATER SPACER
Pump Lead Cement	09/16/2010 02:08		6	373.4			210.0	1060 SKS. @ 12.3# 2.33 YIELD 12.62 WRQ. PUMPED 900 OF THE 1060 SKS. PER CUSTOMER REQUEST. LEFT 160 SKS. OF LEAD CEMENT ON THE BIN.

## Cementing Job Log

Activity Description	Date/Time	Cht #	Rate bbl/ min	Volume bbl		Pressure psig		Comments
				Stage	Total	Tubing	Casing	
Pump Tail Cement	09/16/2010 03:13		6	59			280.0	160 SKS. @ 12.8# 2.07 YIELD 10.67 WRQ.
Drop Top Plug	09/16/2010 03:24							
Pump Displacement	09/16/2010 03:25		6				695.0	FRESH WATER DISPLACEMENT
Slow Rate	09/16/2010 04:00		2	196			595.0	
Bump Plug	09/16/2010 04:04		2	206			1120. 0	
Check Floats	09/16/2010 04:09							
Other	09/16/2010 04:24		2	10		310.0		CIRCULATE THE PARASITE STRING WITH SUGAR WATER
Pressure Test	09/16/2010 04:35		2	1.5			1550. 0	PRESSURE TEST THE CASING WITH 1550 PSI FOR 15 MINUTES.
End Job	09/16/2010 04:55							END OF THE PRIMARY CEMENT JOB. CIRCULATED 20 BBLS OF CEMENT TO SURFACE. CEMENT FELL BACK 100+ FT.
Start Job	09/16/2010 06:43							START TOPOUT #1
Pump Cement	09/16/2010 06:46		3	51.5		100.0		147 SKS. @ 12.5# 1.97 YIELD 10.96 WRQ.
End Job	09/16/2010 07:13							END TOPOUT #1 CIRCULATED CEMENT TO SURFACE. CEMENT FELL BACK 44 FT.
Start Job	09/16/2010 09:08							START TOPOUT #2
Pump Cement	09/16/2010 09:10		3	24.5		95.0		70 SKS. @ 12.5# 1.97 YIELD 10.96 WRQ.
End Job	09/16/2010 09:37							END TOPOUT #2 CIRCULATED CEMENT TO SURFACE
Rig-Down Equipment	09/16/2010 09:50							THANKS FOR USING HALLIBURTON. BRANDON REEVES AND CREW.



# 9 5/8" Surface



## Event Log

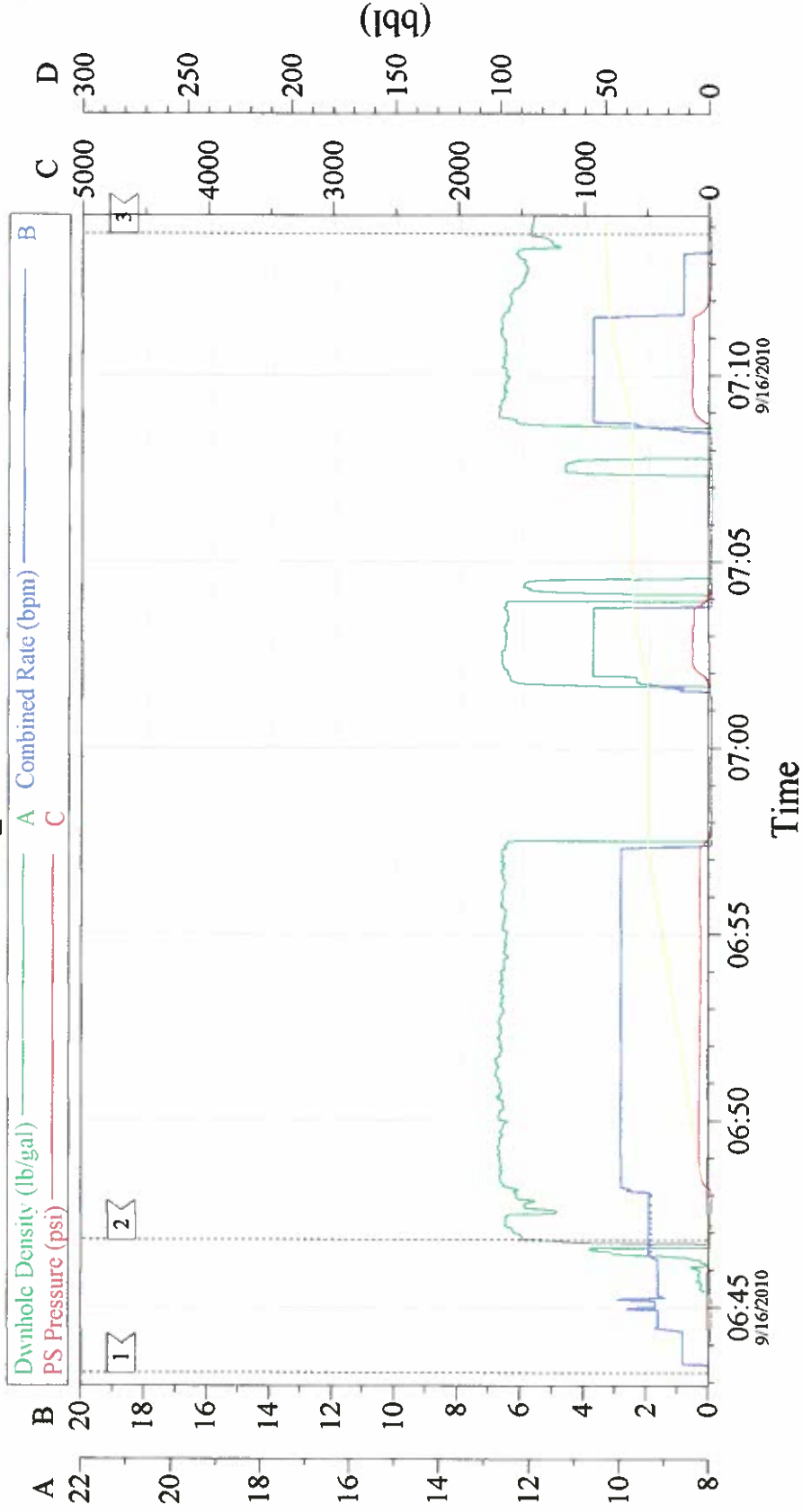
Intersection	pp	Intersection	pp
1 < START JOB	01:37:45 0.000	2 < TEST LINES	01:41:32 1263
3 < PUMP H2O SPACER	01:45:27 -16.50	4 < PUMP SUPERFLUSH SPACER	01:50:38 83.01
5 < PUMP H2O SPACER	01:58:50 13.00	6 < PUMP LEAD CEMENT	02:08:07 86.79
7 < PUMP TAIL CEMENT	03:13:18 216.5	8 < DROP TOP PLUG	03:23:51 56.05
9 < PUMP DISPLACEMENT	03:25:31 29.00	10 < SLOW RATE	04:00:33 597.8
11 < LAND PLUG	04:04:07 1125	12 < CHECK FLOATS	04:09:50 18.31
13 < CIRCULATE PARASITE STRING	04:24:36 3.000	14 < PRESSURE TEST CASING	04:37:15 1544
15 < END JOB	04:53:05 14.00		

Customer: OXY  
Well Number: CC 697-09-33B  
Supervisor: BRANDON REEVES

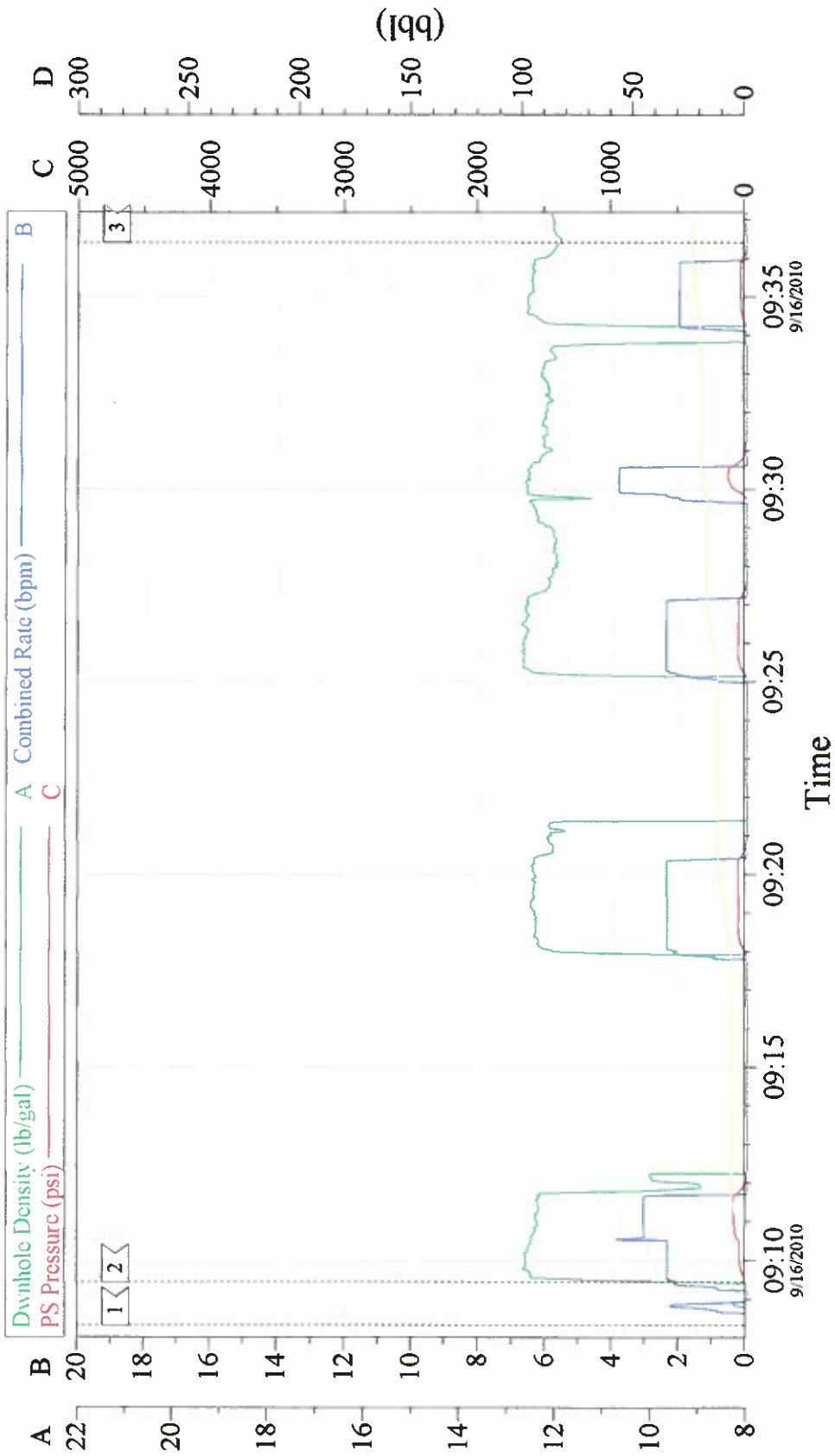
Job Date: 09/16/2010  
Job Type: SURFACE  
Company Rep.: MARCO SILVA

Ticket #: 7629145  
ADC Used: Yes  
Elite/Operator: 3/CHRIS SMITH

# Top Out



Customer: OXY	Job Date: 09/16/2010	Ticket #: 7629145
Well Number: CC 697-09-33B	Job Type: TOPOUT	ADC Used: Yes
Supervisor: BRANDON REEVES	Company Rep.: MARCO SILVA	Elite/Operator: 3/CHRIS SMITH



Customer: OXY	Job Date: 09/16/2010	Ticket #: 7629145
Well Number: CC 697-09-33B	Job Type: TOPOUT	ADC Used: Yes
Supervisor: BRANDON REEVES	Company Rep.: MARCO SILVA	Elite/Operator: 3/CHRIS SMITH