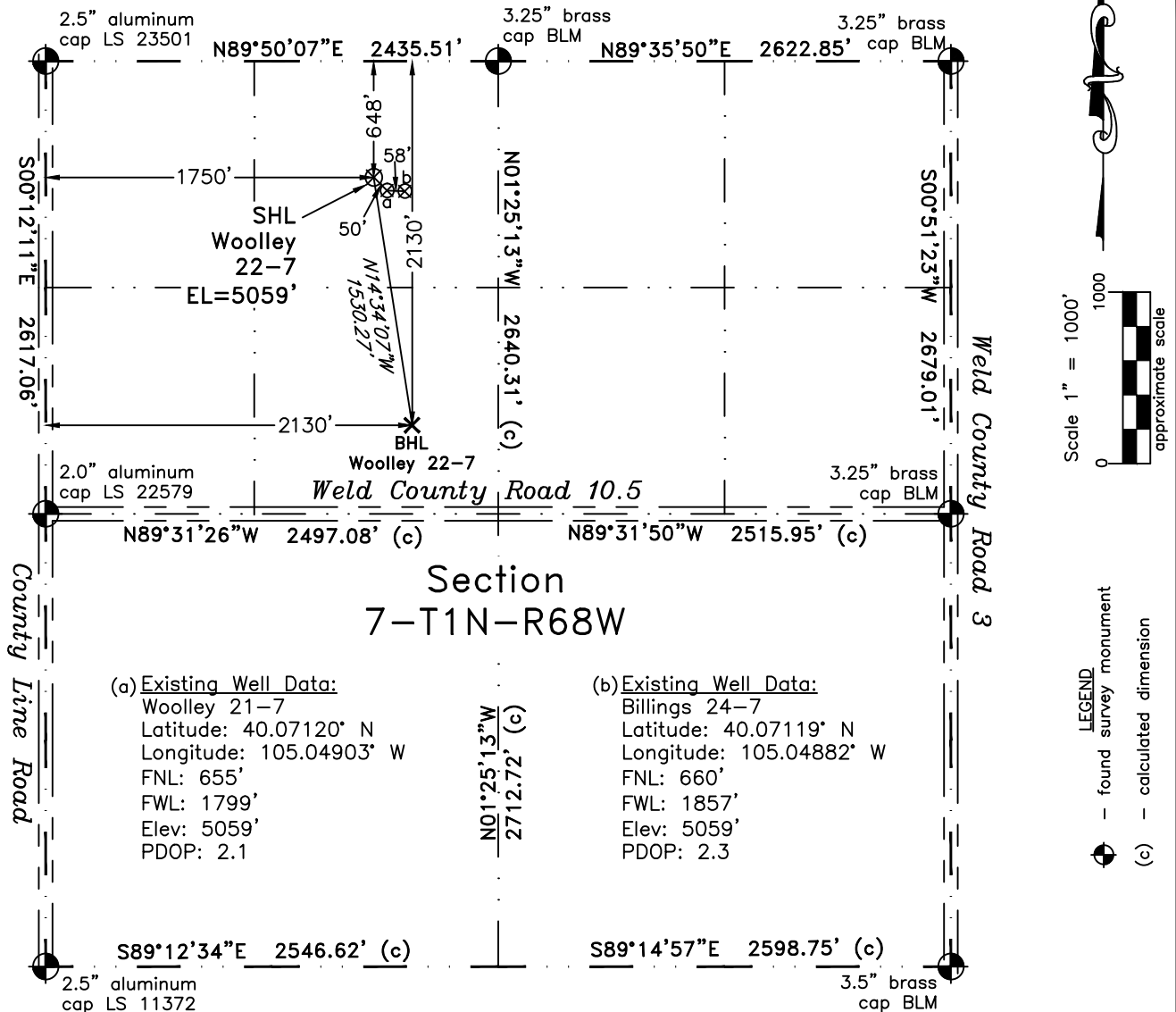


WELL LOCATION CERTIFICATE

THIS MAP DOES NOT
REPRESENT A BOUNDARY SURVEY



In accordance with a request from Doug Pearlman of EnCana Oil & Gas (USA) Inc., PLS Group, LLC has determined the location of the **Woolley 22-7** well site to be SHL: 648' FNL and 1750' FWL, (BHL 2130' FNL and 2130' FWL) as measured at ninety (90) degrees from the section lines of Section 7, Township 1 North, Range 68 West, 6th Principal Meridian, County of Weld, CO.

Proposed Surface Hole Data:

Latitude: N 40.07122° BHL(40.06715°)
Longitude: W 105.04920° BHL(105.04785°)

Nearest: Building 1361' northwest Above Ground Utility 1785' west
Public Road 1735' west Railroad 4,480' southeast
Property Line 348' northwest
PDOP: 1.6

Notes:

- 1) Bearings and distances based upon NAD 83 Colorado North State Plane Coordinates using RTK GPS observations taken on 11/03/2010 by operator Craig Burke.
- 2) Conversion factor to ground (1.000277368).
- 3) Elevations based on NAVD 88 GPS heights and Geoid 2003 corrections.
- 4) See improvement map for visible improvements within 400 feet of pad site.
- 5) The location falls on agricultural land.

NOTICE: According to Colorado law you MUST commence any legal action based upon any defect in this W.L.C. within three years after you first discover such defect. In no event may any action based upon any defect in this W.L.C. be commenced more than ten years from this said date of the certification shown hereon.

I hereby certify that this Well Location Certificate was prepared by me or under my direct supervision on 11/16/10 for and on behalf of Earthline Oil & Gas (USA), Inc. 11224 E. Smith, a Land Surveyor, for an improvement to the land and there is no other use or claim for establishment of easements, loadings, or other surface improvement thereon.

John R. Woolley LS#38219
Well: Woolley 22-7