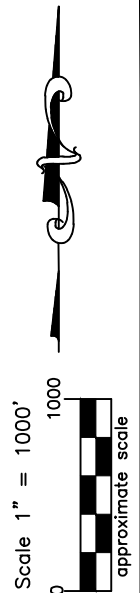
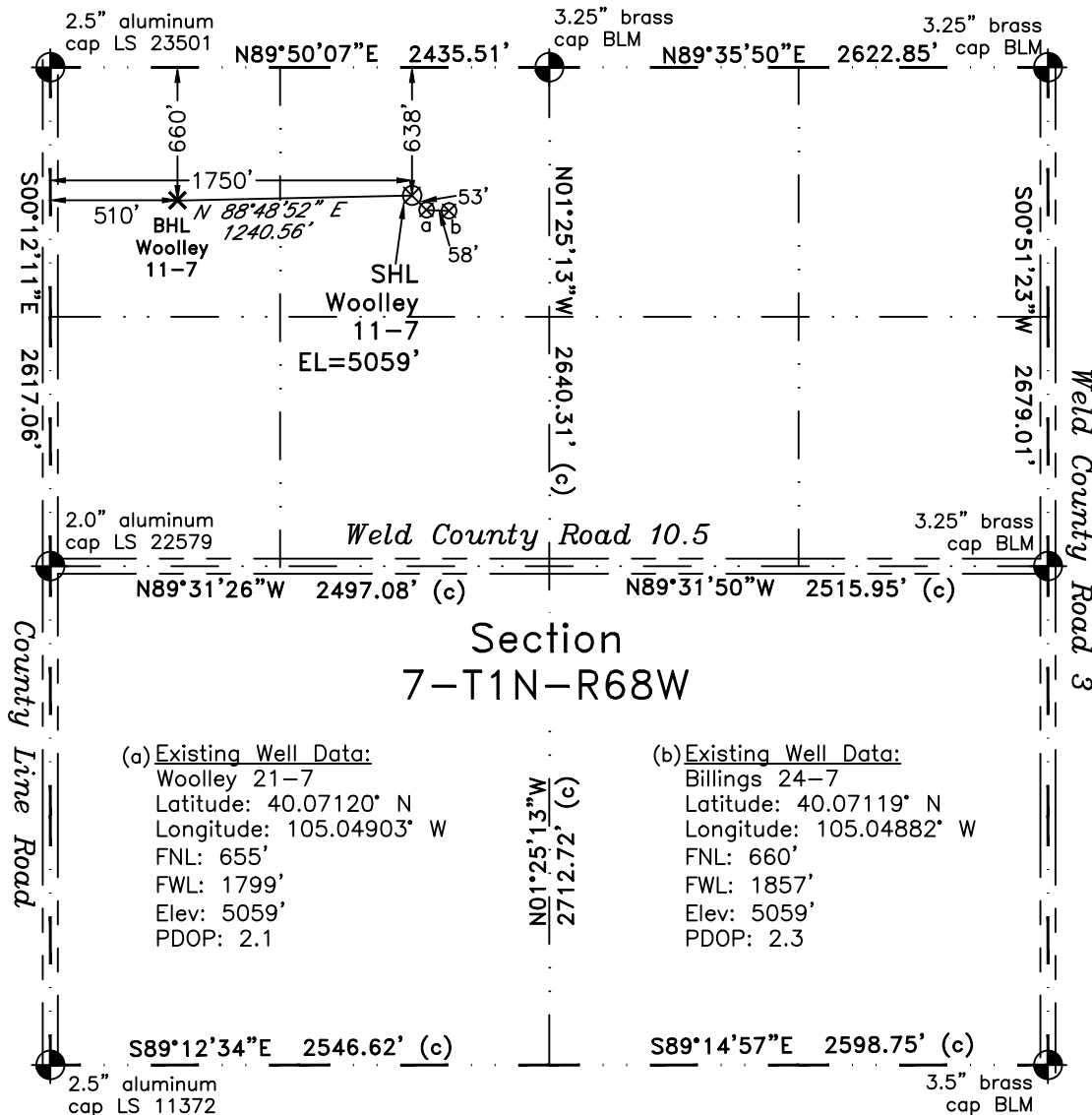


PLS Group, LLC  
109 Coronado Ct. — Bldg 7  
Fort Collins, Colorado 80525

# WELL LOCATION CERTIFICATE

THIS MAP DOES NOT  
REPRESENT A BOUNDARY SURVEY



LEGEND  
— found survey monument  
— calculated dimension  
(c)

(a) Existing Well Data:  
Woolley 21-7  
Latitude: 40.07120° N  
Longitude: 105.04903° W  
FNL: 655'  
FWL: 1799'  
Elev: 5059'  
PDOP: 2.1

(b) Existing Well Data:  
Billings 24-7  
Latitude: 40.07119° N  
Longitude: 105.04882° W  
FNL: 660'  
FWL: 1857'  
Elev: 5059'  
PDOP: 2.3

In accordance with a request from Doug Pearlman of EnCana Oil & Gas (USA) Inc., PLS Group, LLC has determined the location of the **Woolley 11-7** well site to be SHL: 638' FNL and 1750' FWL, (BHL 660' FNL and 510' FWL) as measured at ninety (90) degrees from the section lines of Section 1 North, Range 68 West, 6th Principal Meridian, County of Weld, CO.

## Proposed Surface Hole Data:

Latitude: N 40.07125° BHL(40.07120°)  
Longitude: W 105.04920° BHL(105.05364°)

Nearest: Building 1356' northwest Above Ground Utility 1785' west  
Public Road 1735' west Railroad 4,490' southeast  
Property Line 338' northwest  
PDOP: 2.5

## Notes:

- 1) Bearings and distances based upon NAD 83 Colorado North State Plane Coordinates using RTK GPS observations taken on 11/03/2010 by operator Craig Burke.
- 2) Conversion factor to ground (1.000277368).
- 3) Elevations based on NAVD 88 GPS heights and Geoid 2003 corrections.
- 4) See improvement map for visible improvements within 400 feet of pad site.
- 5) The location falls on agricultural land.

**NOTICE:** According to Colorado law you MUST commence any legal action based upon any defect in this W.L.C. within three years after you first discover such defect. In no event may any action based upon any defect in this W.L.C. be commenced more than ten years from this said date of the certification shown hereon.

I hereby certify that this Well Location Certificate was prepared by me or my direct supervisor, John Robert McGehee, for and on behalf of PLS Group, LLC, EnCana Oil & Gas (USA) Inc., that it is a true and correct copy of the original and that it is not to be relied upon for establishment of a boundary, building, or other future improvement line.

John Robert McGehee LS#38219  
Well: Woolley 11-7