

**EnCana Corporation**  
Planning Report - Geographic

<b>Database:</b>	EDM	<b>Local Co-ordinate Reference:</b>	Well Woolley 4-0-7
<b>Company:</b>	DJ/Paradox/WTX	<b>TVD Reference:</b>	WELL @ 5072.0ft (Original Well Elev)
<b>Project:</b>	Wattenberg	<b>MD Reference:</b>	WELL @ 5072.0ft (Original Well Elev)
<b>Site:</b>	New Drills	<b>North Reference:</b>	True
<b>Well:</b>	Woolley 4-0-7	<b>Survey Calculation Method:</b>	Minimum Curvature
<b>Wellbore:</b>	Wellbore #1		
<b>Design:</b>	Woolley 4-0-7		

<b>Project</b>	Wattenberg,		
<b>Map System:</b>	US State Plane 1983	<b>System Datum:</b>	Mean Sea Level
<b>Geo Datum:</b>	North American Datum 1983		
<b>Map Zone:</b>	Colorado Northern Zone		

Site		New Drills				
Site Position:		Northing:	1,252,450.66 ft	Latitude:	40° 1' 32.016 N	
From:	Lat/Long	Easting:	3,120,627.66 ft	Longitude:	105° 4' 9.336 W	
Position Uncertainty:		ft	Slot Radius:	in	Grid Convergence:	0.28 °

Well	Woolley 4-0-7					
Well Position	+N/-S	16,654.1 ft	Northing:	1,269,133.05 ft	Latitude:	40° 4' 16.608 N
	+E/-W	5,617.8 ft	Easting:	3,126,160.69 ft	Longitude:	105° 2' 57.120 W
Position Uncertainty		ft	Wellhead Elevation:	ft	Ground Level:	5,059.0 ft

<b>Wellbore</b>	Wellbore #1				
<b>Magnetics</b>	<b>Model Name</b>	<b>Sample Date</b>	<b>Declination (°)</b>	<b>Dip Angle (°)</b>	<b>Field Strength (nT)</b>
	IGRF200510	12/31/2009	9.14	66.79	53,098

<b>Design</b>	Woolley 4-0-7			
<b>Audit Notes:</b>				
<b>Version:</b>	<b>Phase:</b>	PROTOTYPE	<b>Tie On Depth:</b>	0.0
<b>Vertical Section:</b>	<b>Depth From (TVD)</b>	<b>+N/-S</b>	<b>+E/-W</b>	<b>Direction</b>
	(ft)	(ft)	(ft)	(°)
	0.0	0.0	0.0	47.82

<b>Plan Sections</b>										
<b>Measured</b>	<b>Inclination</b>	<b>Azimuth</b>	<b>Vertical</b>	<b>+N/-S</b>	<b>+E/-W</b>	<b>Dogleg</b>	<b>Build</b>	<b>Turn</b>	<b>TFO</b>	<b>Target</b>
<b>Depth</b>	<b>(°)</b>	<b>(°)</b>	<b>Depth</b>	<b>(ft)</b>	<b>(ft)</b>	<b>Rate</b>	<b>Rate</b>	<b>Rate</b>	<b>(°)</b>	
<b>(ft)</b>			<b>(ft)</b>			<b>(°/100ft)</b>	<b>(°/100ft)</b>	<b>(°/100ft)</b>		
0.0	0.00	0.00	0.0	0.0	0.0	0.00	0.00	0.00	0.00	
870.0	0.00	0.00	870.0	0.0	0.0	0.00	0.00	0.00	0.00	
1,279.8	8.20	47.82	1,278.4	19.6	21.7	2.00	2.00	0.00	47.82	
6,882.2	8.20	47.82	6,823.6	555.9	613.6	0.00	0.00	0.00	0.00	
7,292.0	0.00	0.00	7,232.0	575.6	635.3	2.00	-2.00	0.00	180.00	
8,442.0	0.00	0.00	8,382.0	575.6	635.3	0.00	0.00	0.00	0.00	Woolley 4-0-7

**EnCana Corporation**  
Planning Report - Geographic

<b>Database:</b>	EDM	<b>Local Co-ordinate Reference:</b>	Well Woolley 4-0-7
<b>Company:</b>	DJ/Paradox/WTX	<b>TVD Reference:</b>	WELL @ 5072.0ft (Original Well Elev)
<b>Project:</b>	Wattenberg	<b>MD Reference:</b>	WELL @ 5072.0ft (Original Well Elev)
<b>Site:</b>	New Drills	<b>North Reference:</b>	True
<b>Well:</b>	Woolley 4-0-7	<b>Survey Calculation Method:</b>	Minimum Curvature
<b>Wellbore:</b>	Wellbore #1		
<b>Design:</b>	Woolley 4-0-7		

Planned Survey										
Measured Depth (ft)	Inclination (°)	Azimuth (°)	Vertical Depth (ft)	+N/-S (ft)	+E/-W (ft)	Map Northing (ft)	Map Easting (ft)	Latitude	Longitude	
0.0	0.00	0.00	0.0	0.0	0.0	1,269,133.05	3,126,160.69	40° 4' 16.608 N	105° 2' 57.120 W	
820.0	0.00	0.00	820.0	0.0	0.0	1,269,133.05	3,126,160.69	40° 4' 16.608 N	105° 2' 57.120 W	
Surface										
870.0	0.00	0.00	870.0	0.0	0.0	1,269,133.05	3,126,160.69	40° 4' 16.608 N	105° 2' 57.120 W	
1,279.8	8.20	47.82	1,278.4	19.6	21.7	1,269,152.80	3,126,182.28	40° 4' 16.802 N	105° 2' 56.841 W	
4,531.6	8.20	47.82	4,497.0	330.9	365.2	1,269,465.82	3,126,524.25	40° 4' 19.878 N	105° 2' 52.422 W	
Sussex										
5,102.4	8.20	47.82	5,062.0	385.6	425.6	1,269,520.77	3,126,584.28	40° 4' 20.418 N	105° 2' 51.646 W	
Shannon										
6,882.2	8.20	47.82	6,823.6	555.9	613.6	1,269,692.08	3,126,771.44	40° 4' 22.102 N	105° 2' 49.227 W	
7,292.0	0.00	0.00	7,232.0	575.6	635.3	1,269,711.84	3,126,793.03	40° 4' 22.296 N	105° 2' 48.948 W	
7,522.0	0.00	0.00	7,462.0	575.6	635.3	1,269,711.84	3,126,793.03	40° 4' 22.296 N	105° 2' 48.948 W	
Niobrara										
7,857.0	0.00	0.00	7,797.0	575.6	635.3	1,269,711.84	3,126,793.03	40° 4' 22.296 N	105° 2' 48.948 W	
Codell										
8,292.0	0.00	0.00	8,232.0	575.6	635.3	1,269,711.84	3,126,793.03	40° 4' 22.296 N	105° 2' 48.948 W	
J Sand										
8,344.0	0.00	0.00	8,284.0	575.6	635.3	1,269,711.84	3,126,793.03	40° 4' 22.296 N	105° 2' 48.948 W	
A Marker										
8,442.0	0.00	0.00	8,382.0	575.6	635.3	1,269,711.84	3,126,793.03	40° 4' 22.296 N	105° 2' 48.948 W	
Production - Woolley 4-0-7										

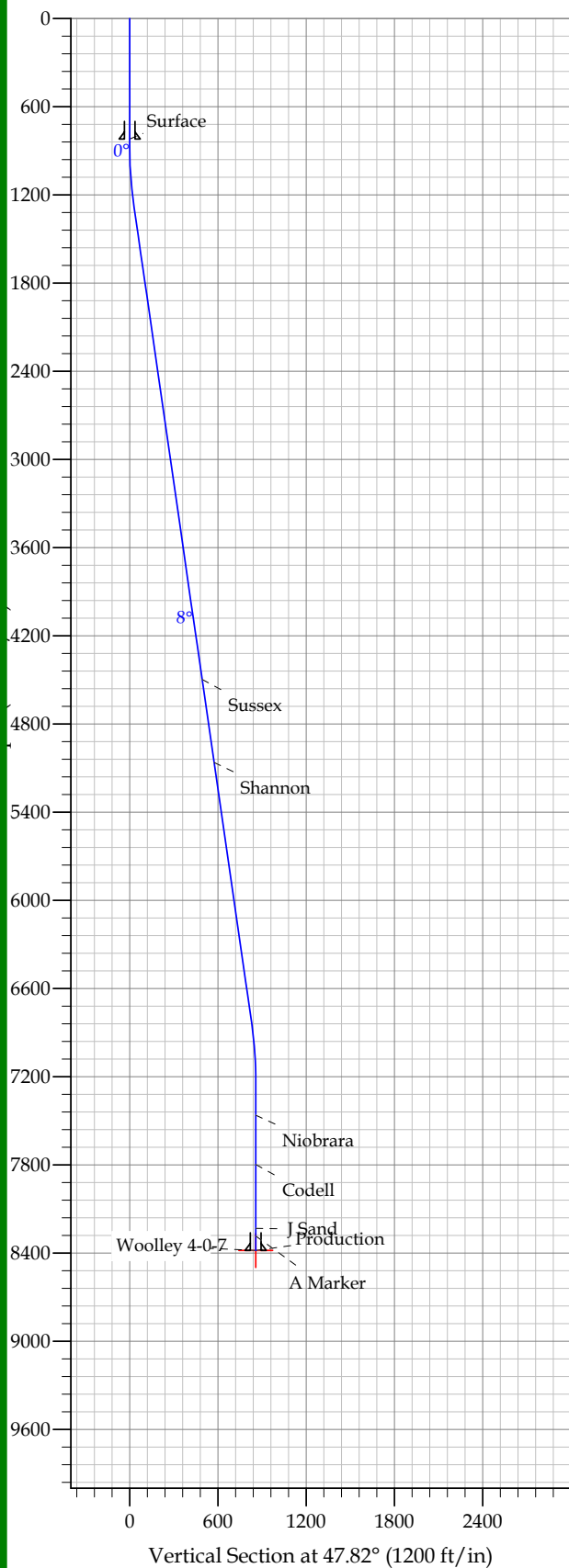
Design Targets										
Target Name	Dip Angle (°)	Dip Dir. (°)	TVD (ft)	+N/-S (ft)	+E/-W (ft)	Northing (ft)	Easting (ft)	Latitude	Longitude	
- hit/miss target										
- Shape										
Woolley 4-0-7	0.00	0.00	8,382.0	575.6	635.3	1,269,711.84	3,126,793.03	40° 4' 22.296 N	105° 2' 48.948 W	
- plan hits target										
- Point										

Casing Points					
Measured Depth (ft)	Vertical Depth (ft)	Name	Casing Diameter (in)	Hole Diameter (in)	
820.0	820.0	Surface	8.625	12.250	
8,442.0	8,382.0	Production	4.500	7.785	

Formations						
Measured Depth (ft)	Vertical Depth (ft)	Name	Lithology	Dip (°)	Dip Direction (°)	
4,531.6	4,497.0	Sussex		0.00		
5,102.4	5,062.0	Shannon		0.00		
7,522.0	7,462.0	Niobrara		0.00		
7,857.0	7,797.0	Codell		0.00		
8,292.0	8,232.0	J Sand		0.00		
8,344.0	8,284.0	A Marker		0.00		

**EnCana Corporation**  
Planning Report - Geographic

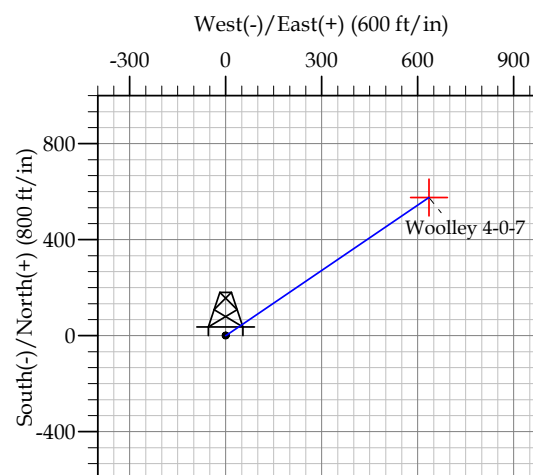
<b>Database:</b>	EDM	<b>Local Co-ordinate Reference:</b>	Well Woolley 4-0-7
<b>Company:</b>	DJ/Paradox/WTX	<b>TVD Reference:</b>	WELL @ 5072.0ft (Original Well Elev)
<b>Project:</b>	Wattenberg	<b>MD Reference:</b>	WELL @ 5072.0ft (Original Well Elev)
<b>Site:</b>	New Drills	<b>North Reference:</b>	True
<b>Well:</b>	Woolley 4-0-7	<b>Survey Calculation Method:</b>	Minimum Curvature
<b>Wellbore:</b>	Wellbore #1		
<b>Design:</b>	Woolley 4-0-7		



Co-ordinate (N/E) Reference: Well Woolley 4-0-7, True North  
Vertical (TVD) Reference: WELL @ 5072.0ft (Original Well Elev)  
Section (VS) Reference: Slot - (0.0N, 0.0E)  
Measured Depth Reference: WELL @ 5072.0ft (Original Well Elev)  
Calculation Method:

WELL DETAILS: Woolley 4-0-7

					Ground Level:		5059.0				
+N/-S		+E/-W		Northing	Easting	Latitude	Longitude	Slot			
SECTION DETAILS											
Sec	MD	Inc	Azi	TVD	+N/-S	+E/-W	DLeg	TFace	VSec	Target	
1	0.0	0.00	0.00	0.0	0.0	0.0	0.00	0.00	0.0		
2	870.0	0.00	0.00	870.0	0.0	0.0	0.00	0.00	0.0		
3	1279.8	8.20	47.82	1278.4	19.6	21.7	2.00	47.82	29.3		
4	6882.2	8.20	47.82	6823.6	555.9	613.6	0.00	0.00	828.0		
5	7292.0	0.00	0.00	7232.0	575.6	635.3	2.00	180.00	857.2		
6	8442.0	0.00	0.00	8382.0	575.6	635.3	0.00	0.00	857.2	Woolley 4-0-7	



### FORMATION TOP DETAILS

TVDPATH	MDPATH	FORMATION
4497.0	4531.6	Sussex
5062.0	5102.4	Shannon
7462.0	7522.0	Niobrara
7797.0	7857.0	Codell
8232.0	8292.0	J Sand
8284.0	8344.0	A Marker

## CASING DETAILS

TVD	MD	Name	Size
820.0	820.0	Surface	8.625
8382.0	8442.0	Production	4.500