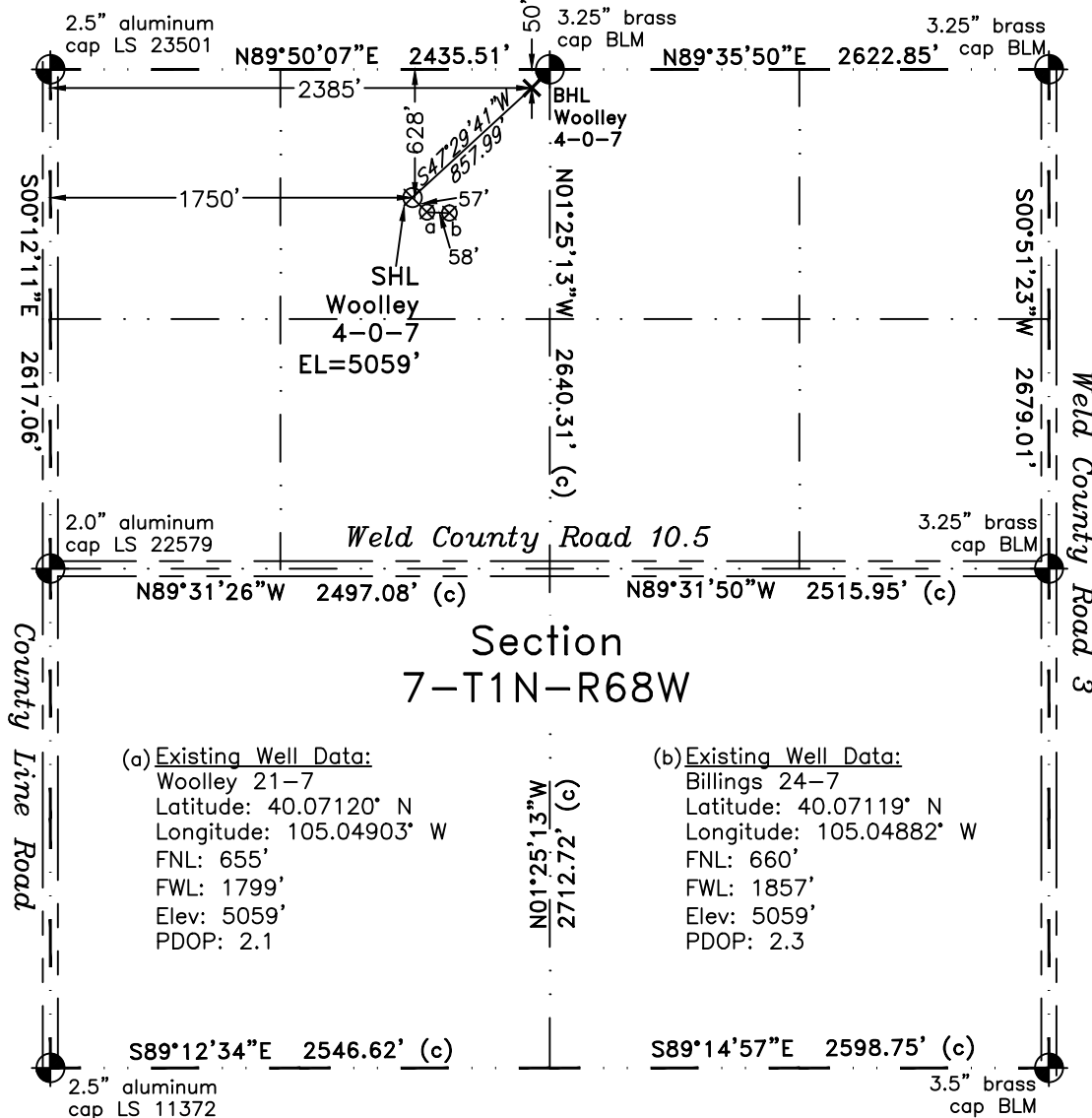


PLS Group, LLC
109 Coronado Ct. — Bldg 7
Fort Collins, Colorado 80525

WELL LOCATION CERTIFICATE

THIS MAP DOES NOT
REPRESENT A BOUNDARY SURVEY



(a) Existing Well Data:
Woolley 21-7
Latitude: 40.07120° N
Longitude: 105.04903° W
FNL: 655'
FWL: 1799'
Elev: 5059'
PDOP: 2.1

(b) Existing Well Data:
Billings 24-7
Latitude: 40.07119° N
Longitude: 105.04882° W
FNL: 660'
FWL: 1857'
Elev: 5059'
PDOP: 2.3

In accordance with a request from Doug Pearlman of EnCana Oil & Gas (USA) Inc., PLS Group, LLC has determined the location of the **Woolley 4-0-7** well site to be SHL: 628' FNL and 1750' FWL, (BHL 50' FNL and 2385' FWL) as measured at ninety (90) degrees from the section lines of Section 7, Township 1 North, Range 68 West, 6th Principal Meridian, County of Weld, CO.

Proposed Surface Hole Data:

Latitude: N 40.07128° BHL(40.07286°)
Longitude: W 105.04920° BHL(105.04693°)

Nearest: Building 1351' northwest Above Ground Utility 1785' west
Public Road 1735' west Railroad 4,500' southeast
Property Line 330' northwest
PDOP: 2.1

Notes:

- 1) Bearings and distances based upon NAD 83 Colorado North State Plane Coordinates using RTK GPS observations taken on 11/03/2010 by operator Craig Burke.
- 2) Conversion factor to ground (1.000277368).
- 3) Elevations based on NAVD 88 GPS heights and Geoid 2003 corrections.
- 4) See improvement map for visible improvements within 400 feet of pad site.
- 5) The location falls on agricultural land.

NOTICE: According to Colorado law you MUST commence any legal action based upon any defect in this W.L.C. within three years after you first discover such defect. In no event may any action based upon any defect in this W.L.C. be commenced more than ten years from this said date of the certification shown hereon.

I hereby certify that this Well Location Certificate was prepared by me or under my direct supervision for and on behalf of EnCana Oil & Gas (USA) Inc. and that it is to be used for an improvement map and that it is not to be used for any other purpose, including but not limited to, establishing boundaries, buildings, or other features, or for any other purpose.

John Robert McConnee LS#38219
Well: Woolley 4-0-7