

Patterson

DUAL
INDUCTION
LOG

Company XTO Energy, Inc.		Company XTO Energy, Inc.	
Well Apache Canyon 11-13		Well Apache Canyon 11-13	
Field Purgatoire River		Field Purgatoire River	
County Las Animas		County Las Animas	
State CO		State CO	
Location: API # : 05 071 08819 00		Other Services CDL NEUTRON	
SEC 11 TWP 34S RGE 68W		Elevation	
Permanent Datum	Ground Level	Elevation	8154'
Log Measured From	Ground Level		
Drilling Measured From	Ground Level		
Date 8-16-06			
Run Number	One		
Depth Driller	2150'		
Depth Logger	2142'		
Bottom Logged Interval	2140'		
Top Log Interval	Surface Casing		
Casing Driller	8 5/8" @ 216'		
Casing Logger	219'		
Bit Size	7 7/8"		
Type Fluid in Hole	Water		
Density / Viscosity	///		
pH / Fluid Loss	///		
Source of Sample	///		
Rm @ Meas. Temp	///		
Rmf @ Meas. Temp	///		
Rmc @ Meas. Temp	///		
Source of Rmf / Rmc	///		
Rm @ BHT	///		
Time Circulation Stopped	6:15 P.M.		
Time Logger on Bottom	9:40 P.M.		
Maximum Recorded Temperature	103 DEG F		
Equipment Number	T720		
Location	Trinidad		
Recorded By	M. Norton		
Witnessed By	Mr. Don Johnson		

<<< Fold Here >>>

All interpretations are opinions based on inferences from electrical or other measurements and we cannot and do not guarantee the accuracy or correctness of any interpretation, and we shall not, except in the case of gross or willful negligence on our part, be liable or responsible for any loss, costs, damages, or expenses incurred or sustained by anyone resulting from any interpretation made by any of our officers, agents or employees. These interpretations are also subject to our general terms and conditions set out in our current Price Schedule.

Comments

Well Directions:
First Bosque entrance, right on Big Bingham Canyon, stay on main road to end, just past jeep trail go thru single yellow gate, first right, stay on main road to dead end.

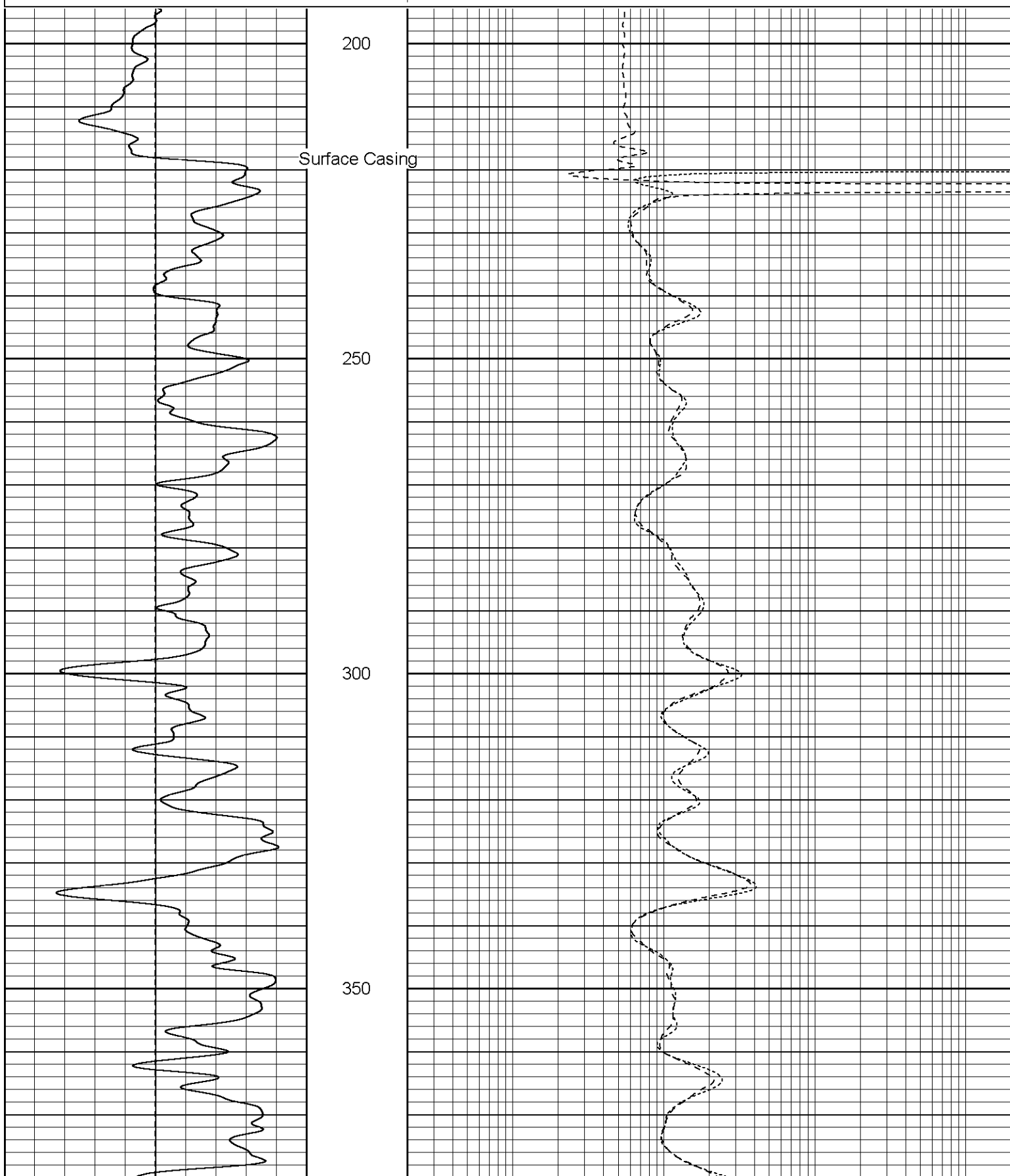
Patterson

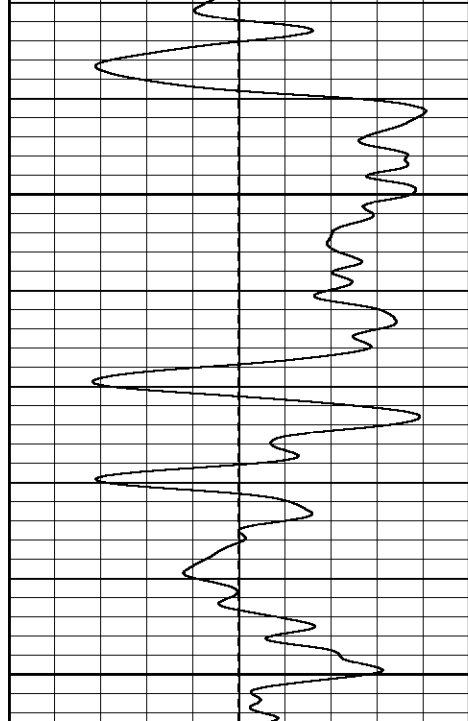
Main Pass

Database File: xtoac1113.db
Dataset Pathname: pass2.1
Presentation Format: dil
Dataset Creation: Wed Aug 16 23:46:01 2006 by Calc Warrior 7.0 STD Ope
Charted by: Depth in Feet scaled 1:240

0	GR (GAPI)	200
-100	SP (mV)	100

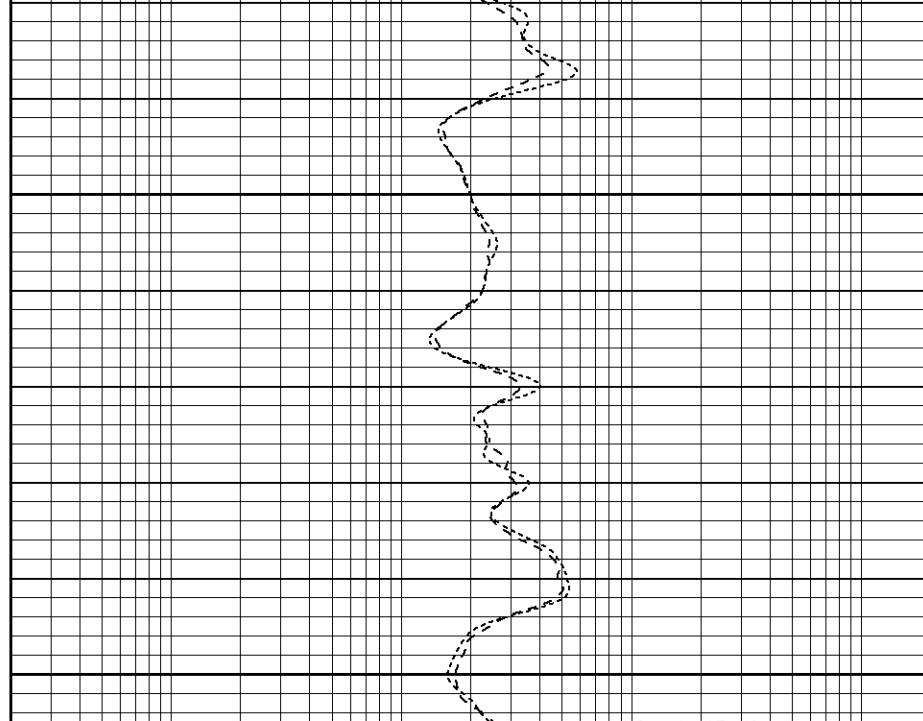
0.2	RILM (Ohm-m)	2000
0.2	RILD (Ohm-m)	2000
0.2	RLL3 (Ohm-m)	2000

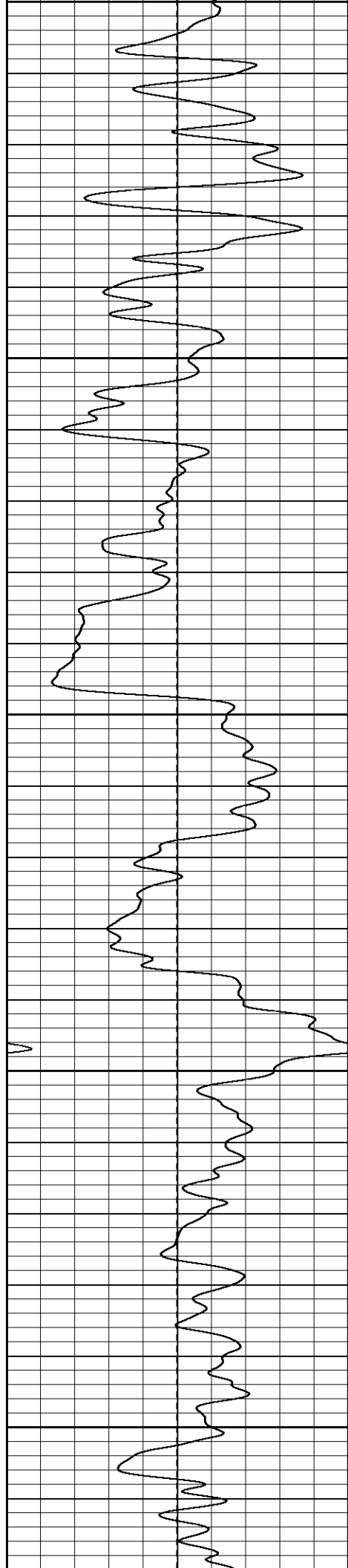




400

450





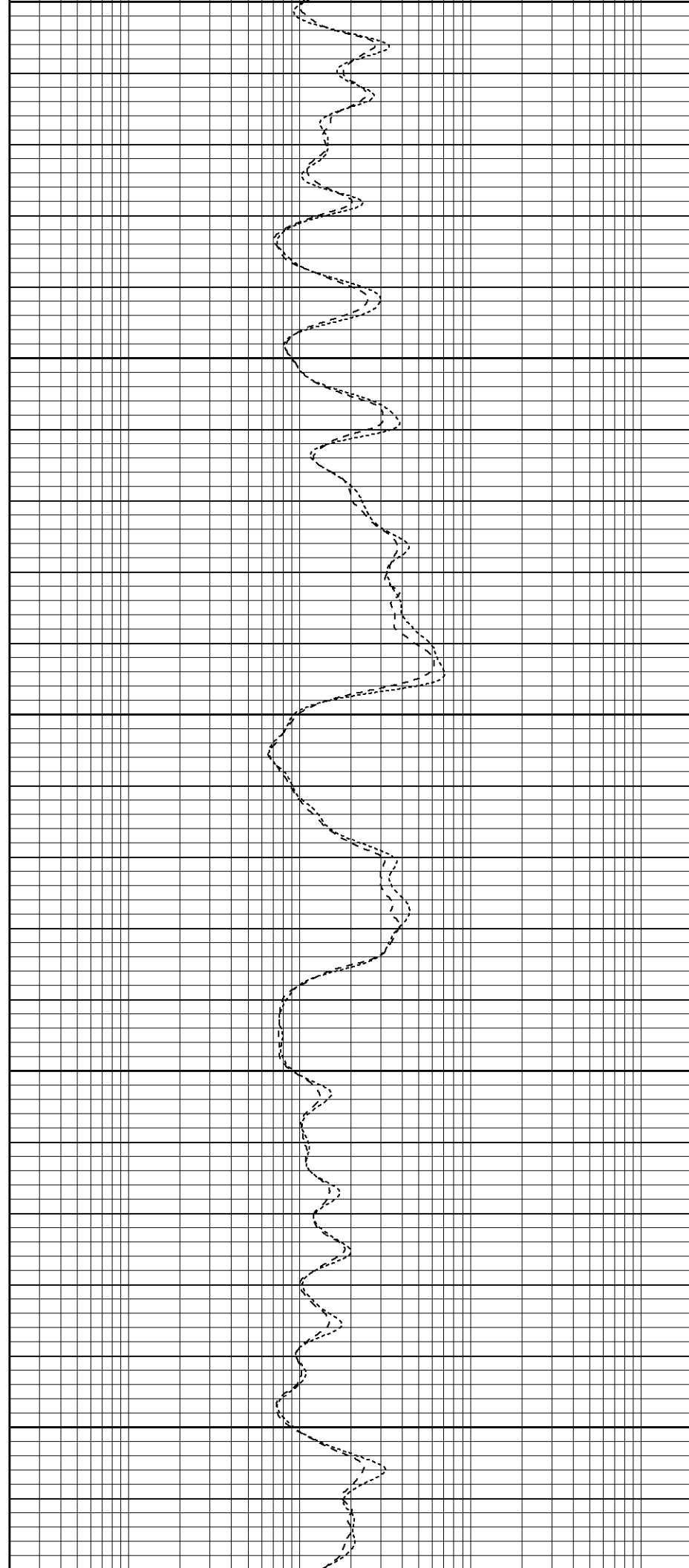
600

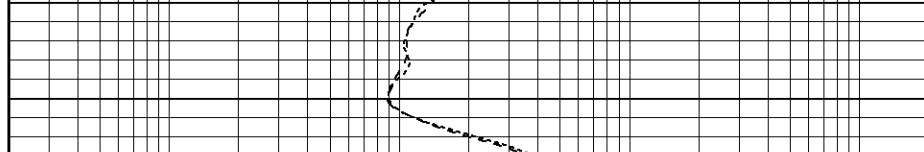
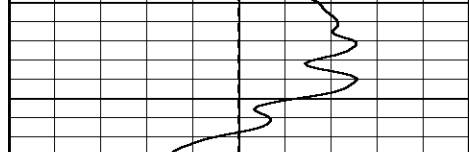
650

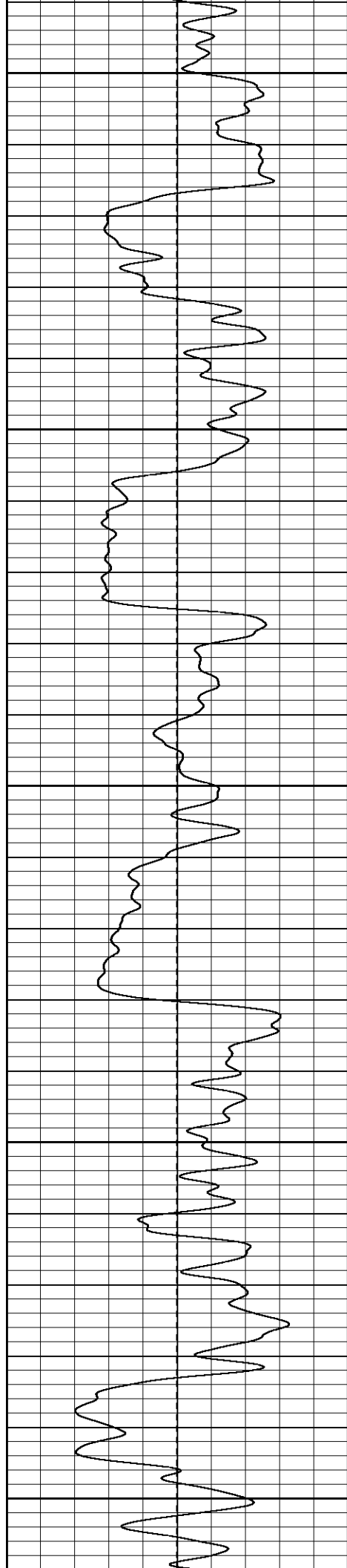
700

750

800







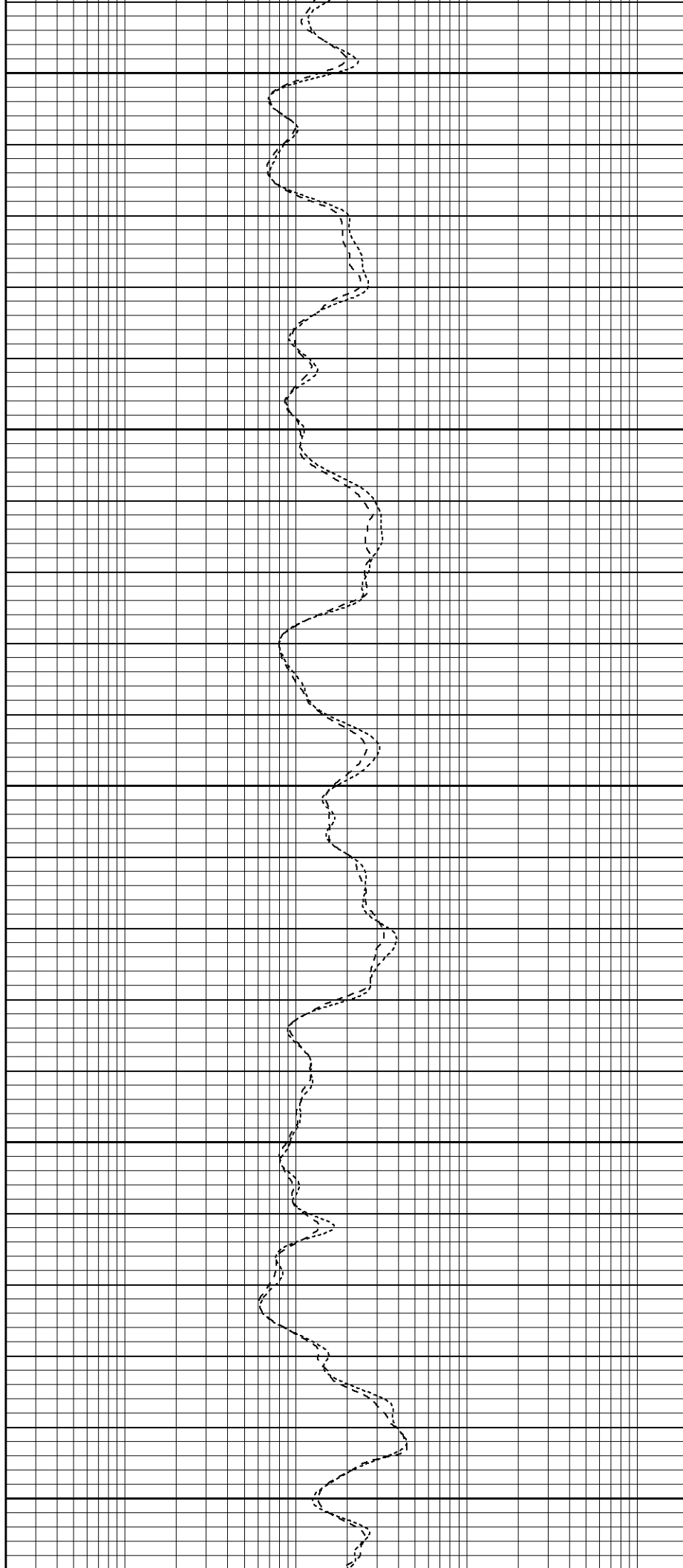
1050

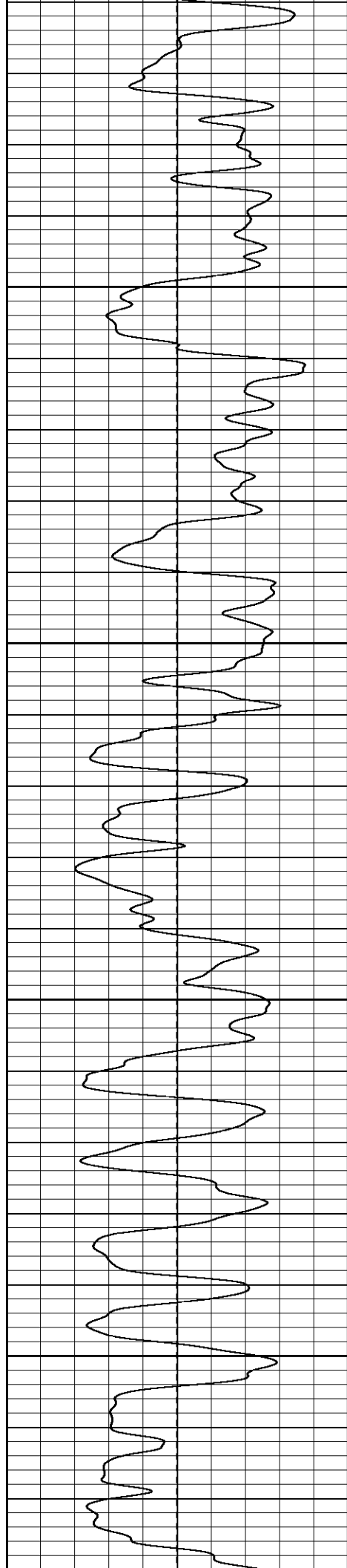
1100

1150

1200

1250



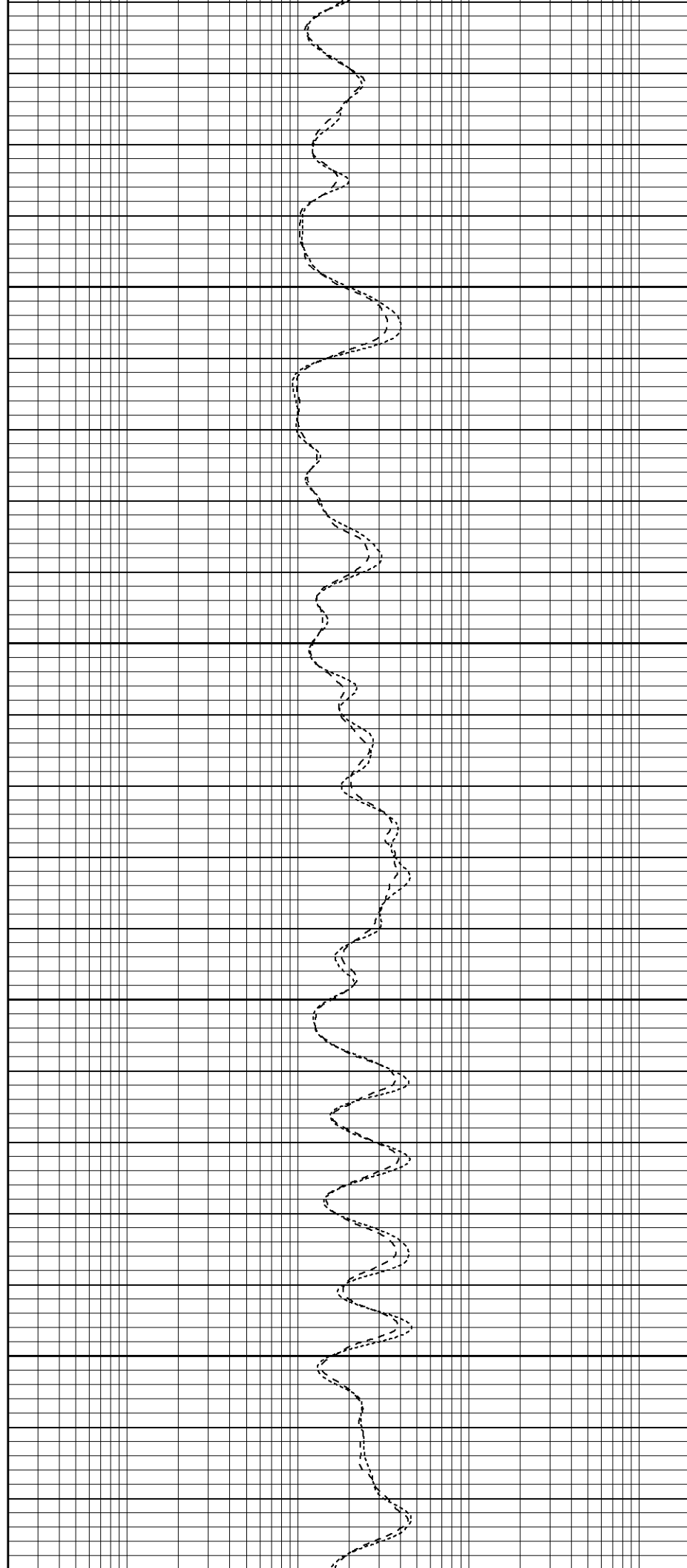


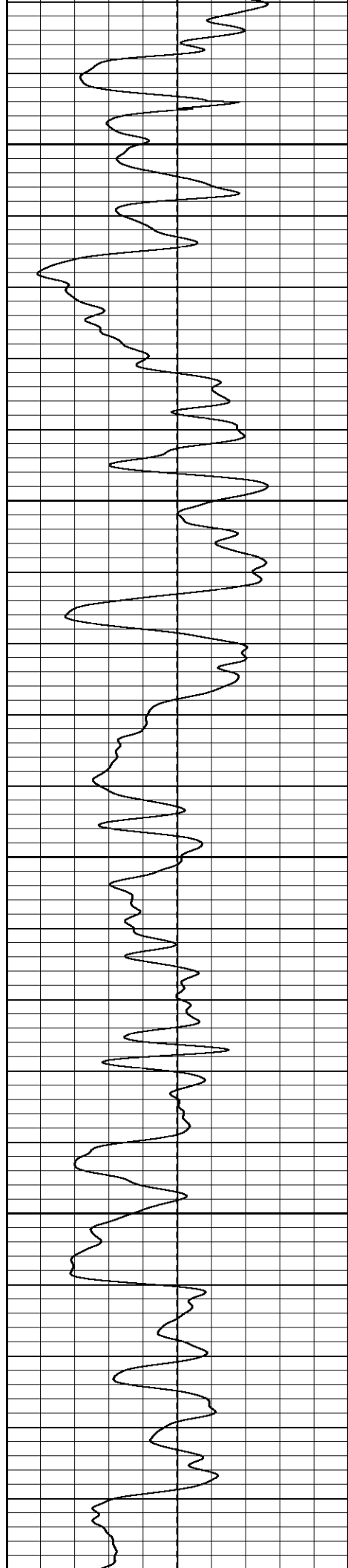
1300

1350

1400

1450





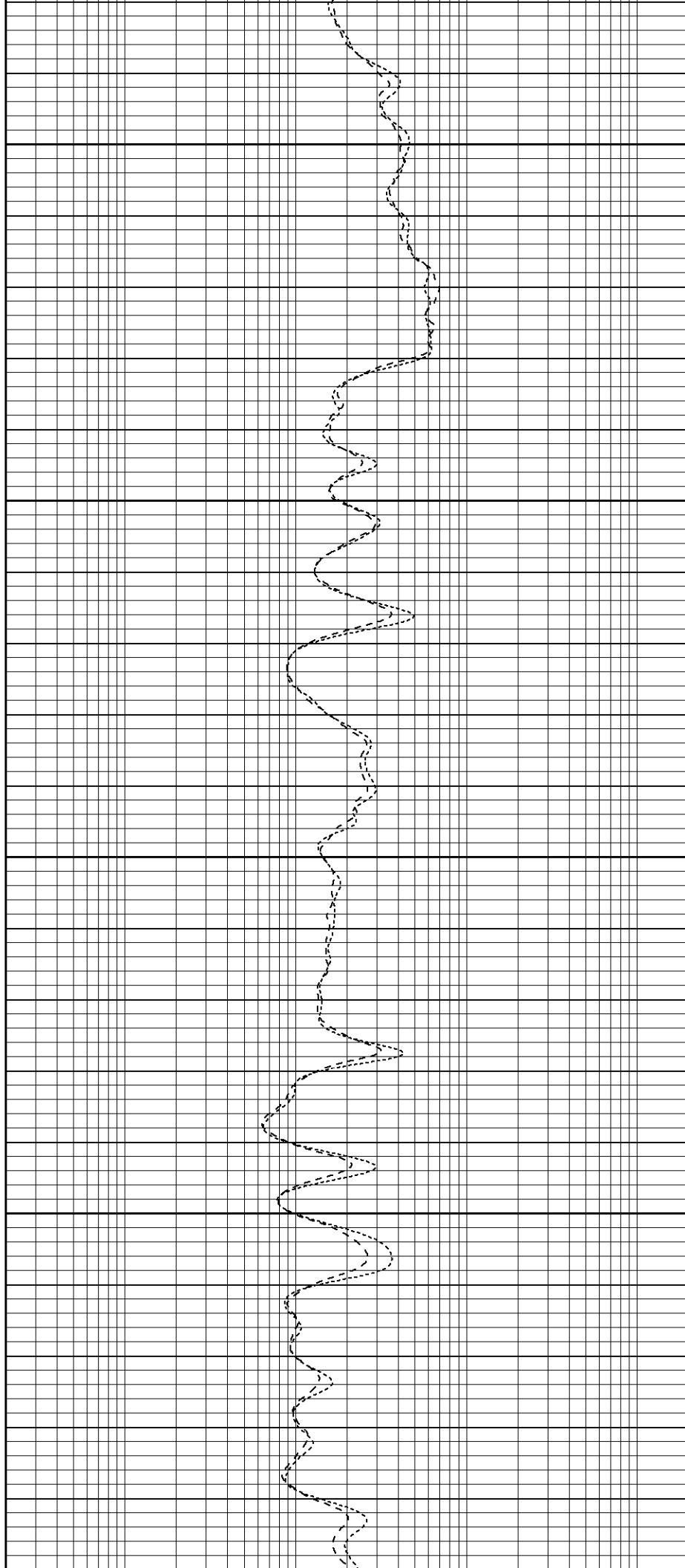
1500

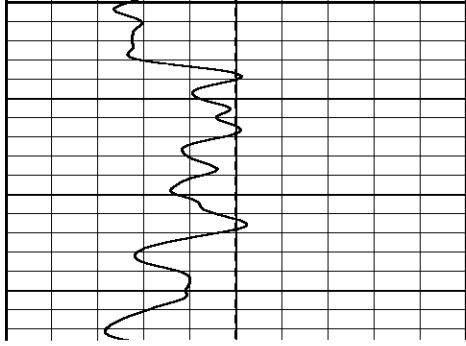
1550

1600

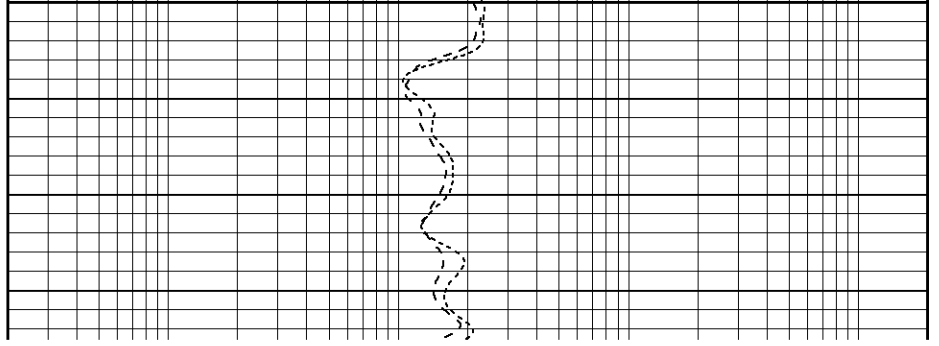
1650

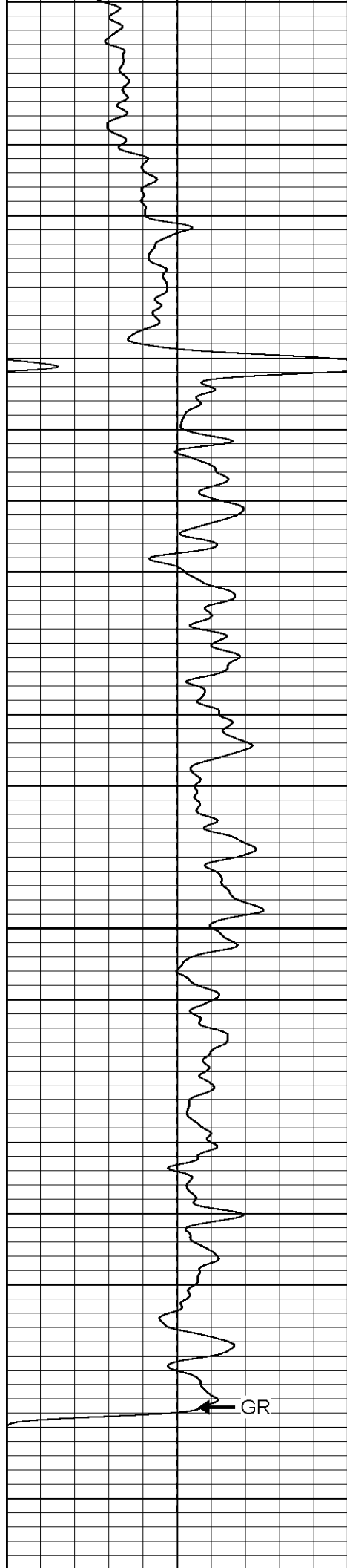
1700





1700





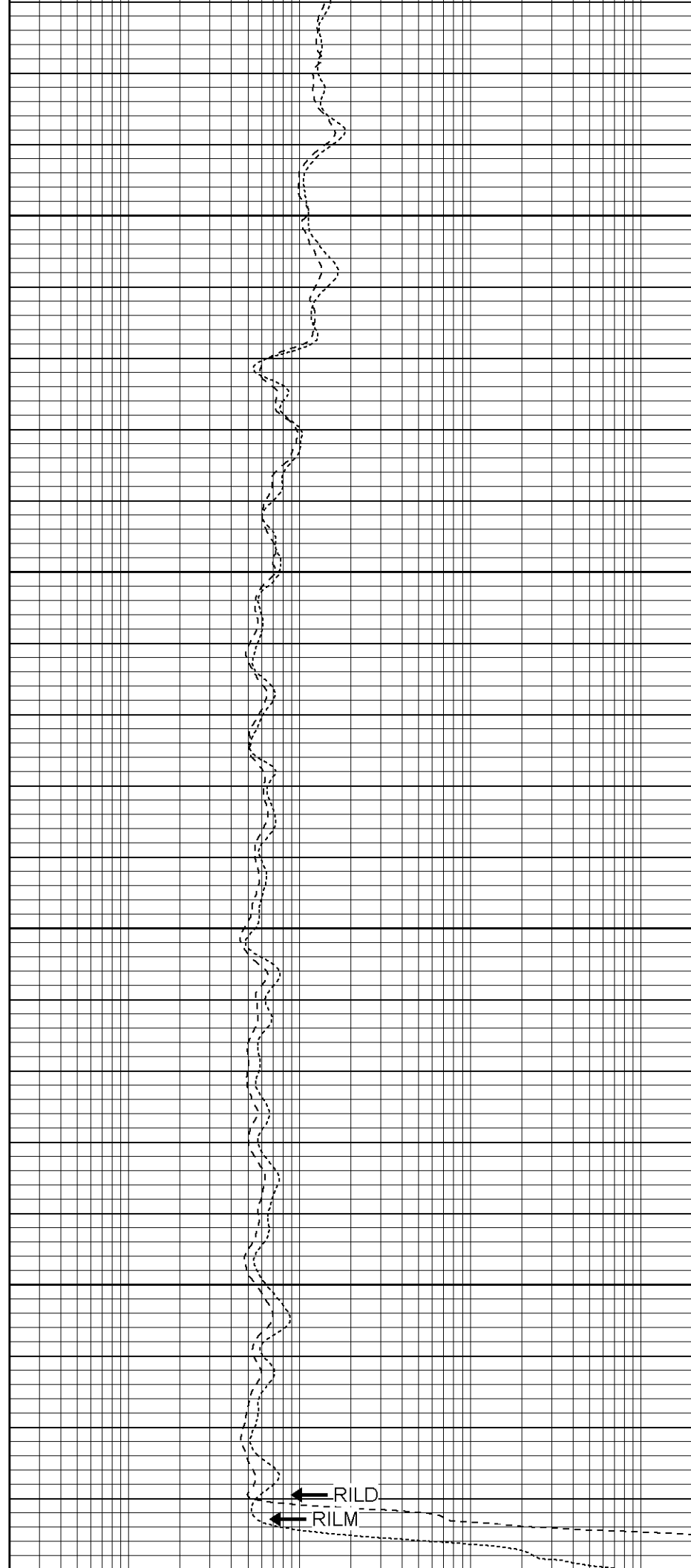
1950

2000

2050

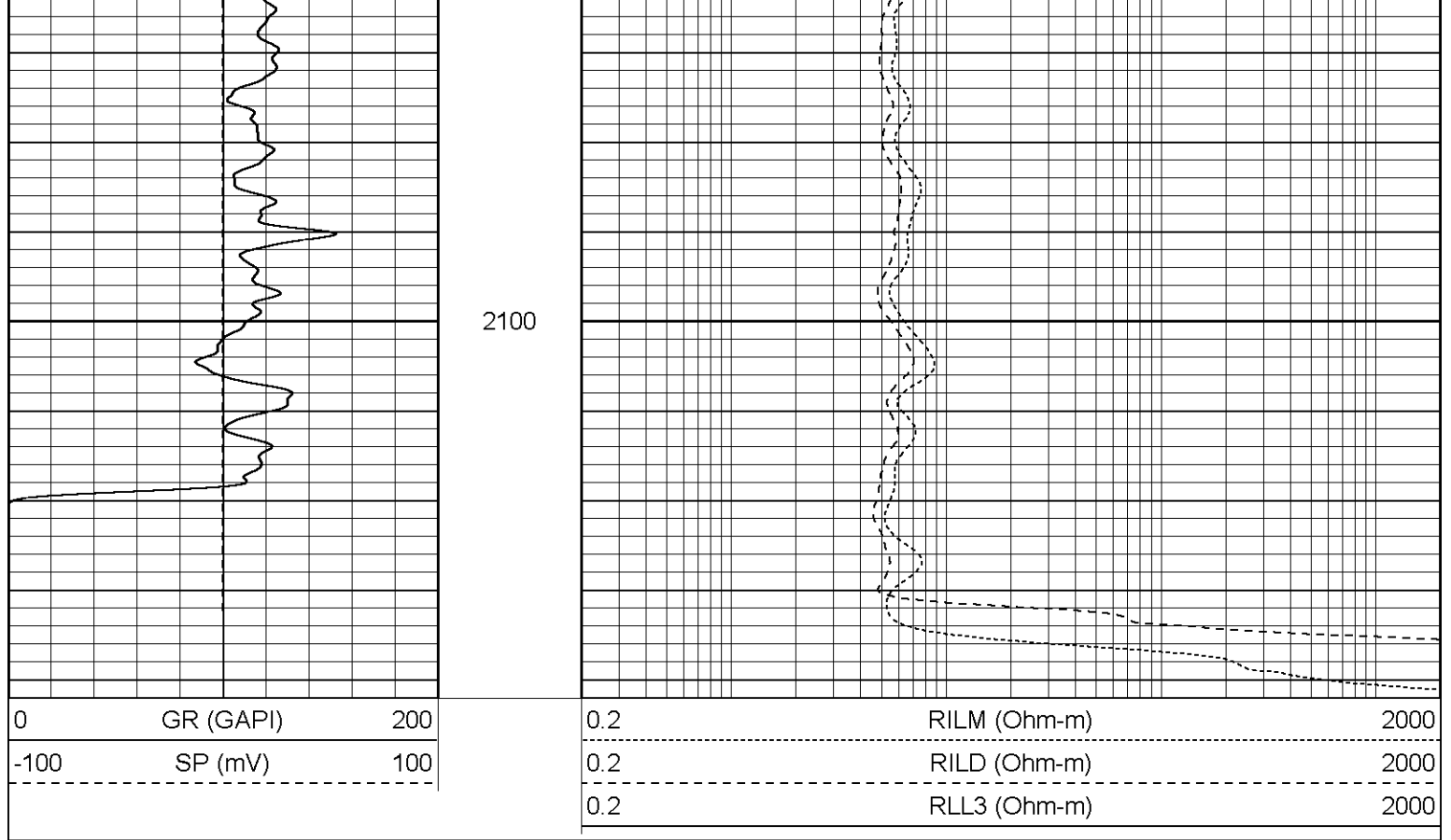
2100

GR



RILD

RILM



Dual Induction Calibration Report																	
Serial-Model:				5375-G													
Surface Cal Performed:				Mon Aug 14 08:21:41 2006													
Downhole Cal Performed:				Wed Aug 16 20:35:44 2006													
After Survey Verification Performed:				Sun Dec 04 10:51:51 2005													
Surface Calibration																	
			Readings					References				Results					
Loop:		Air		Loop				Air		Loop		mmho-m		m		b	
Deep		0.012		0.633		V		0.000		500.000		mmho-m		804.288		-9.342	
Medium		0.016		0.752		V		0.000		550.000		mmho-m		747.433		-11.697	
Internal:		Zero		Cal				Zero		Cal				m		b	
Deep		0.012		0.636		V		0.000		500.000		mmho-m		800.610		-9.578	
Medium		0.016		0.752		V		0.000		550.000		mmho-m		747.389		-12.066	
Downhole Calibration																	
			Readings					References			Results						
Internal:		Zero		Cal				Zero		Cal				m		b	
Deep		1.512		503.799		mmho-m		0.280		500.000		mmho-m		0.995		-1.224	
Medium		0.922		551.464		mmho-m		0.370		550.000		mmho-m		0.998		-0.550	
Shallow		2.522		0.024		V		500.000		2.000		Ohm-m		165.000		-3.000	
After Survey Verification																	
			Readings					Targets			Results						
Internal:		Zero		Cal				Zero		Cal				m'		b'	

Deep	0.000	0.000	mmho-m	1.512	503.799	mmho-m	0.995	-1.224
Medium	0.000	0.000	mmho-m	0.922	551.464	mmho-m	0.998	-0.550
Shallow	0.000	0.000	Ohm-m	500.000	2.000	Ohm-m	1.000	0.000