

**Schlumberger**

Company: **Vecta Oil & Gas LTD**

Well: **Torreys 44-33**

Field: **Wildcat**

County: **Cheyenne**

State: **Colorado**

Well: **Torrey's 44-33**  
Field: **Wildcat**  
County: **Cheyenne**  
State: **Colorado**

Field: **Wildcat**  
County: **Cheyenne**  
State: **Colorado**

County: **Cheyenne** State: **Colorado**

[illegible]

Logging Date					
Run Number					
Depth Driller					
Schlumberger Depth					
Bottom Log Interval					
Top Log Interval					
Casing Driller Size @ Depth		@			
Casing Schlumberger					
Bit Size					
Type Fluid In Hole					
Density		Viscosity			
Fluid Loss		PH			
Source Of Sample					
RM @ Measured Temperature		@			
RMF @ Measured Temperature		@			
RMC @ Measured Temperature		@			
Source RMF	RMF				
RM @ MRT		@		@	
Maximum Recorded Temperatures					
Circulation Stopped		Time			
Logger On Bottom		Time			
Unit Number		Location			
Recorded By					
Witnessed By					

OTHER SERVICES1	OTHER SERVICES2
OS1: FMI-Sonic Scanner	OS1:
OS2:	OS2:
OS3:	OS3:
OS4:	OS4:
OS5:	OS5:
REMARKS: RUN NUMBER 1	REMARKS: RUN NUMBER 2
This is the first run in hole.	
Tool run as per tool sketch.	
Repeat Matrix: Sandstone 2.65	
Main Matrix: Limestone 2.71	



Induction  
Temperatu  
Power Sup

7.9

SP SENSOR  
HTEN HMAS  
Accelerom HV  
Mud Resis  
Tension

0.1

0.0

TOOL ZERO

MAXIMUM STRING DIAMETER 4.63 IN  
MEASUREMENTS RELATIVE TO TOOL ZERO  
ALL LENGTHS IN FEET

Production String

(in)

(ft)

OD

ID

MD

Well Schematic

(ft)

(in)

MD

OD

ID

Casing String

Casing String

Casing Shoe  
Borehole Segment

0.0

8.625

8.097

418.0

8.625

8.097

418.0

7.875

[illegible]

## All Depths are Drillers

## Output DLIS Files

DEFAULT	AIT_TLD_MCFL_CNL_010LUP	FN:9	PRODUCER	07-Jan-2011 22:18	5544.0 FT	368.5 FT
---------	-------------------------	------	----------	-------------------	-----------	----------

## Integrated Hole/Cement Volume Summary

Hole Volume = 2001.65 F3  
Cement Volume = 1157.52 F3 (assuming 5.50 IN casing O.D.)  
Computed from 5530.0 FT to 414.0 FT using data channel(s) HCAL

**OP System Version: 18C0-147**

HILTB-CTS 18C0-147

## Changed Parameter Summary

DLIS Name	New Value	Previous Value	Depth & Time
TDD	5535.00 FT	5536.00 FT	541.5 23:33:38

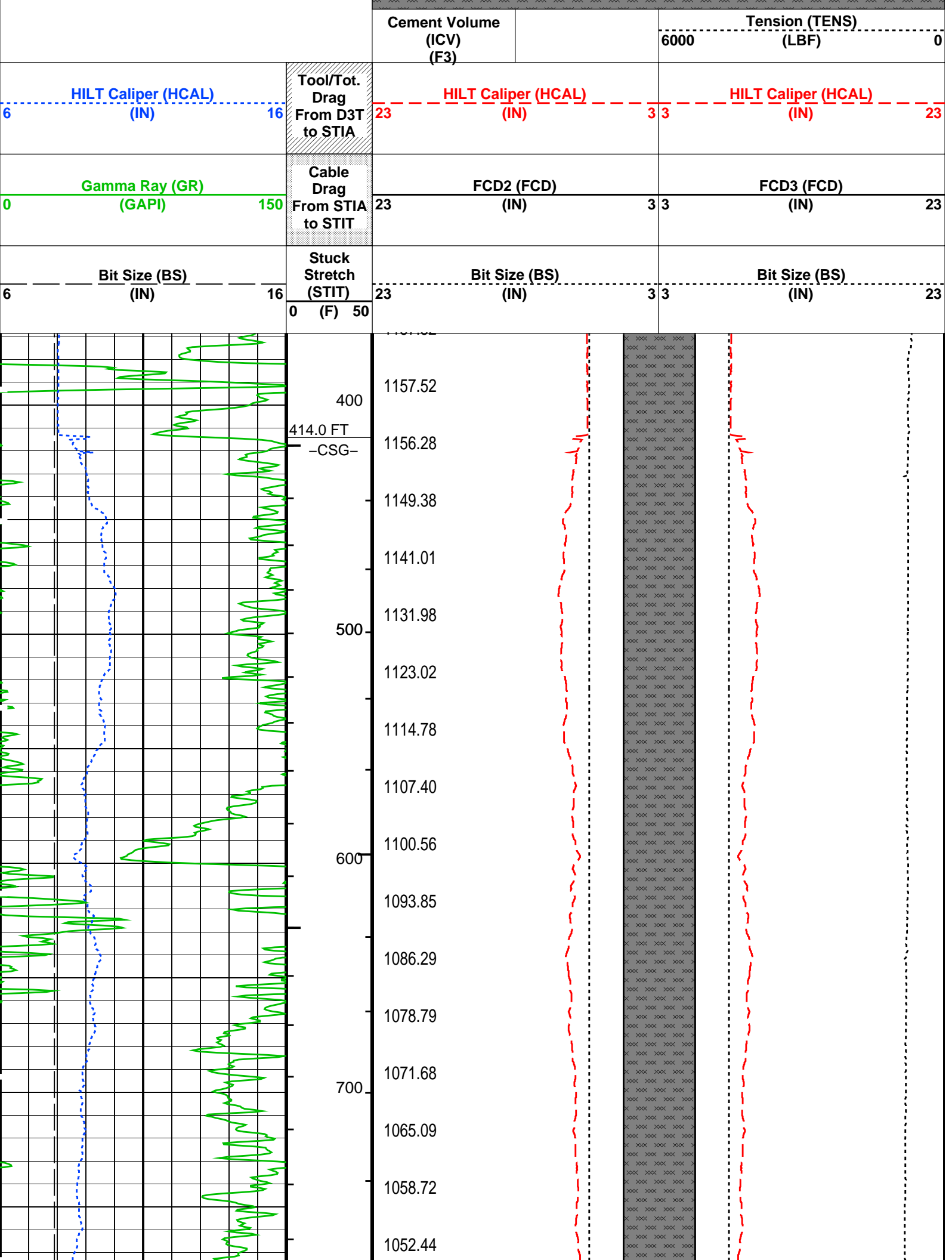
## PIP SUMMARY

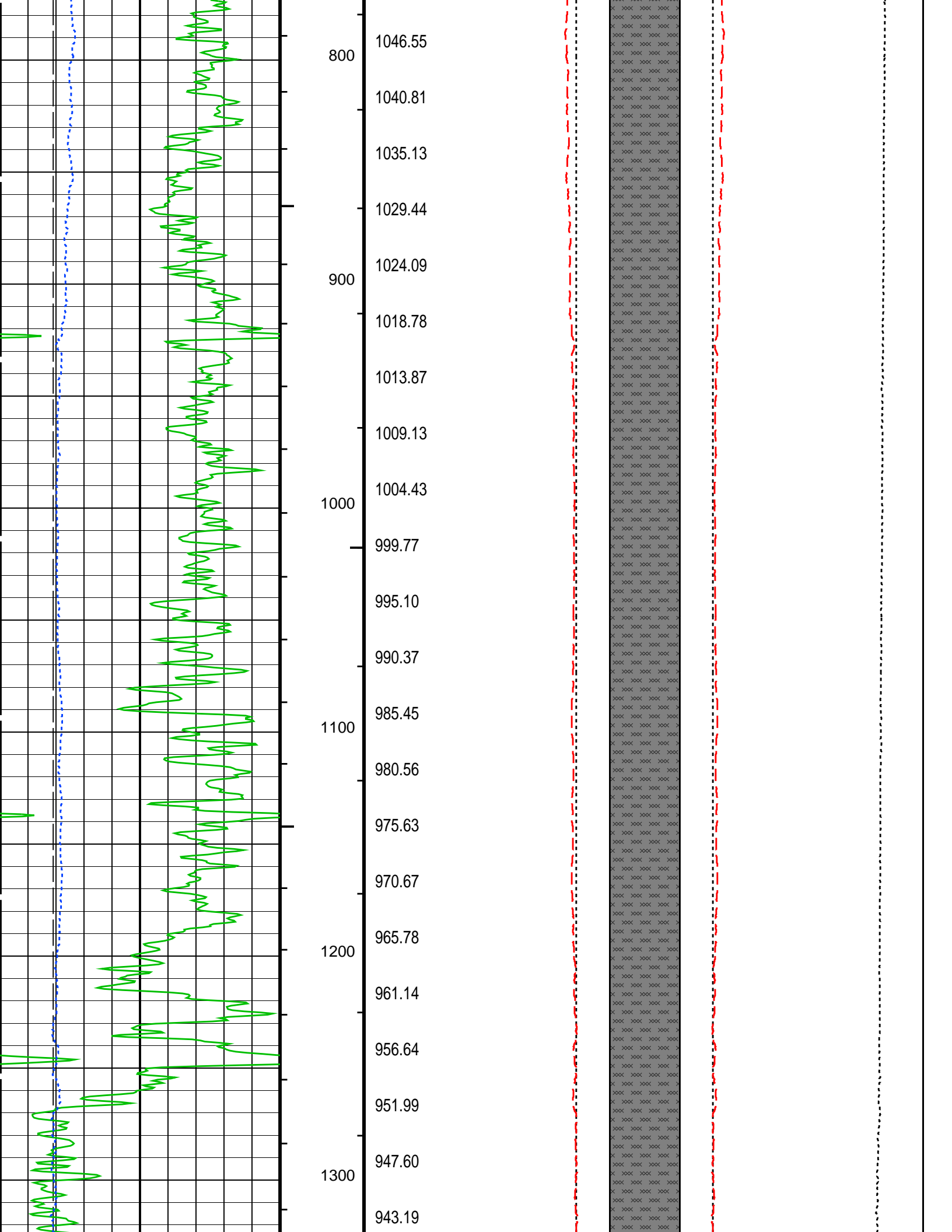
- └ Integrated Hole Volume Minor Pip Every 10 F3
- └ Integrated Hole Volume Major Pip Every 100 F3
  - └ Integrated Cement Volume Minor Pip Every 10 F3
  - └ Integrated Cement Volume Major Pip Every 100 F3

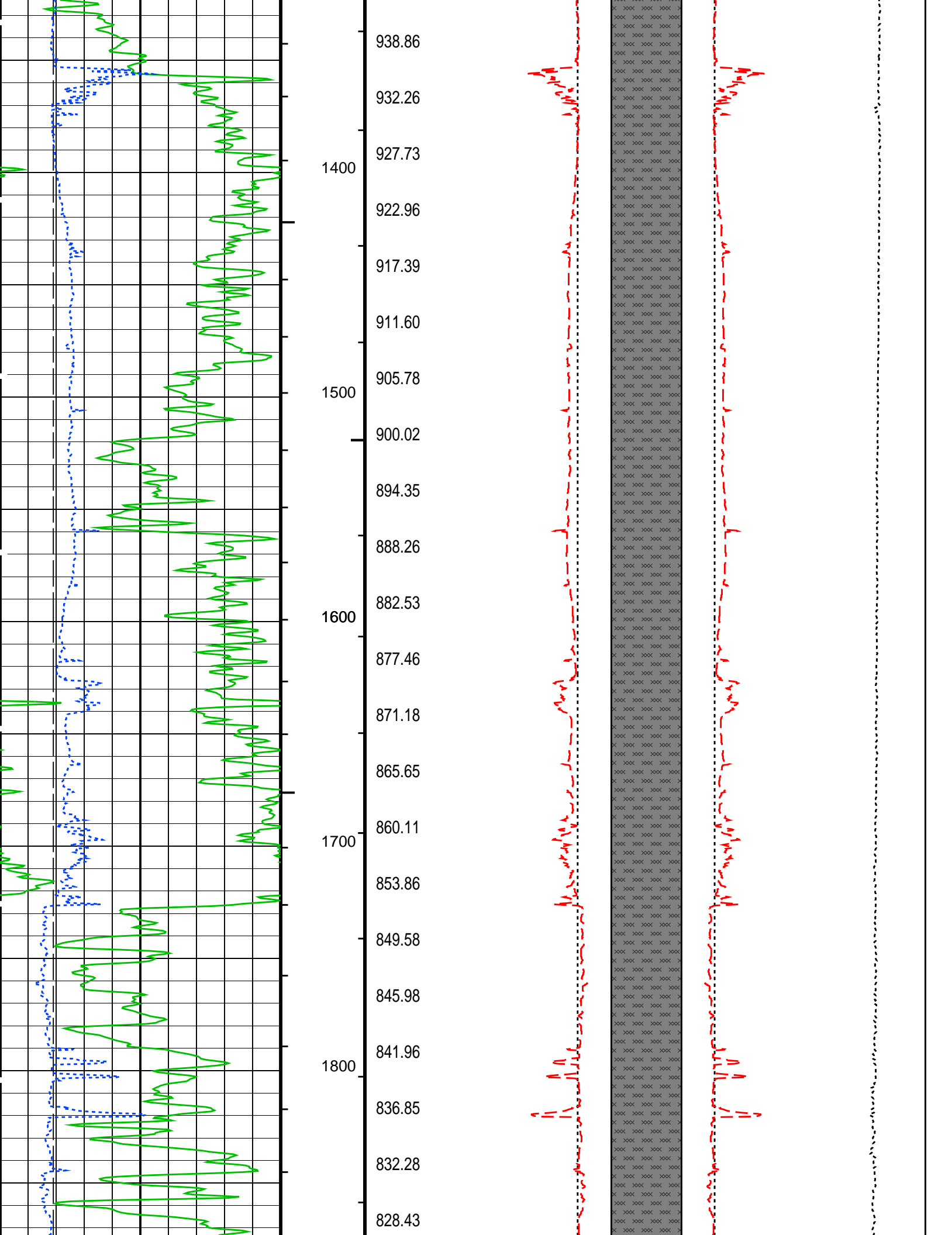
**Time Mark Every 60 S**

### FCD2 – FCD3

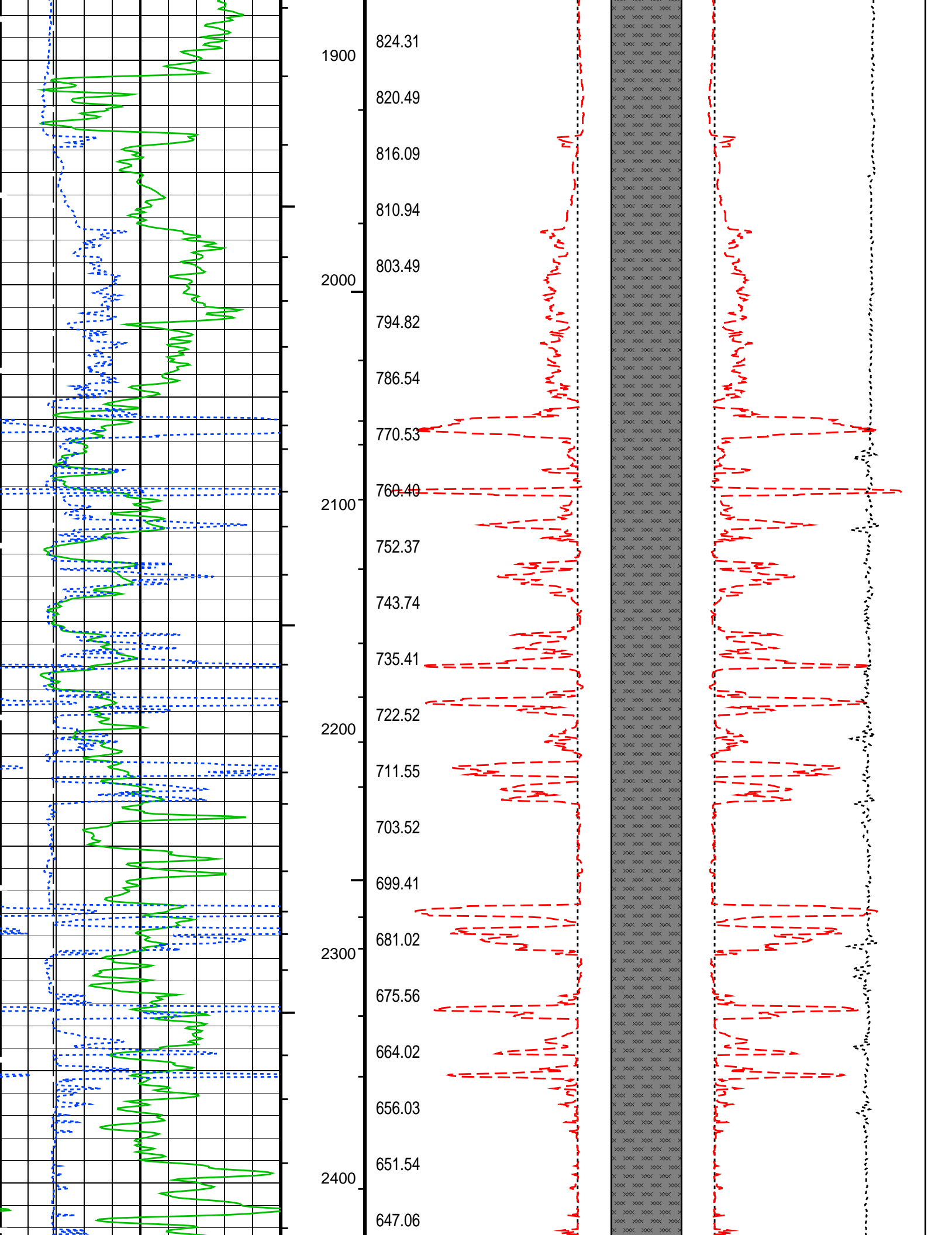
#### From FCD2 to FCD3

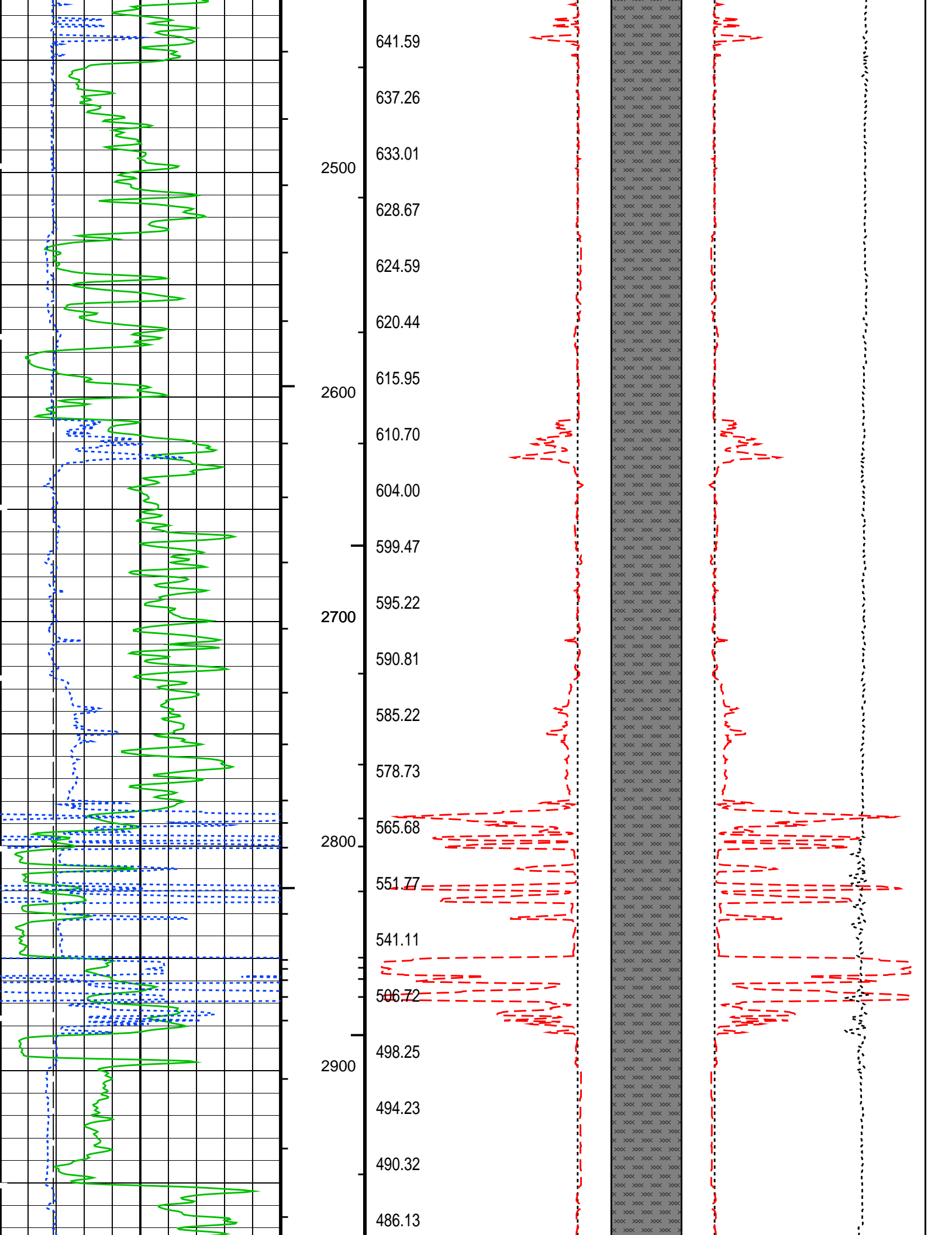


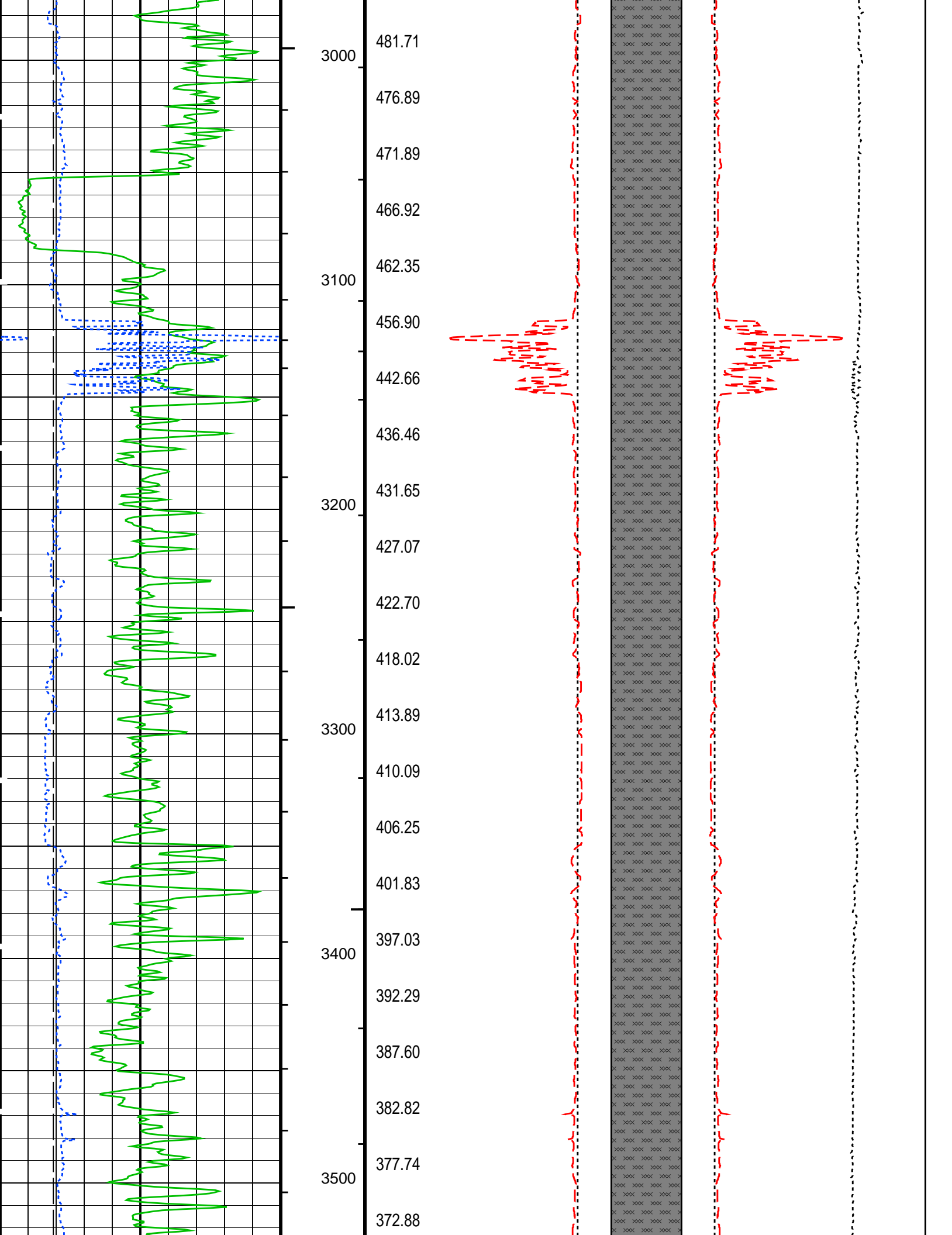


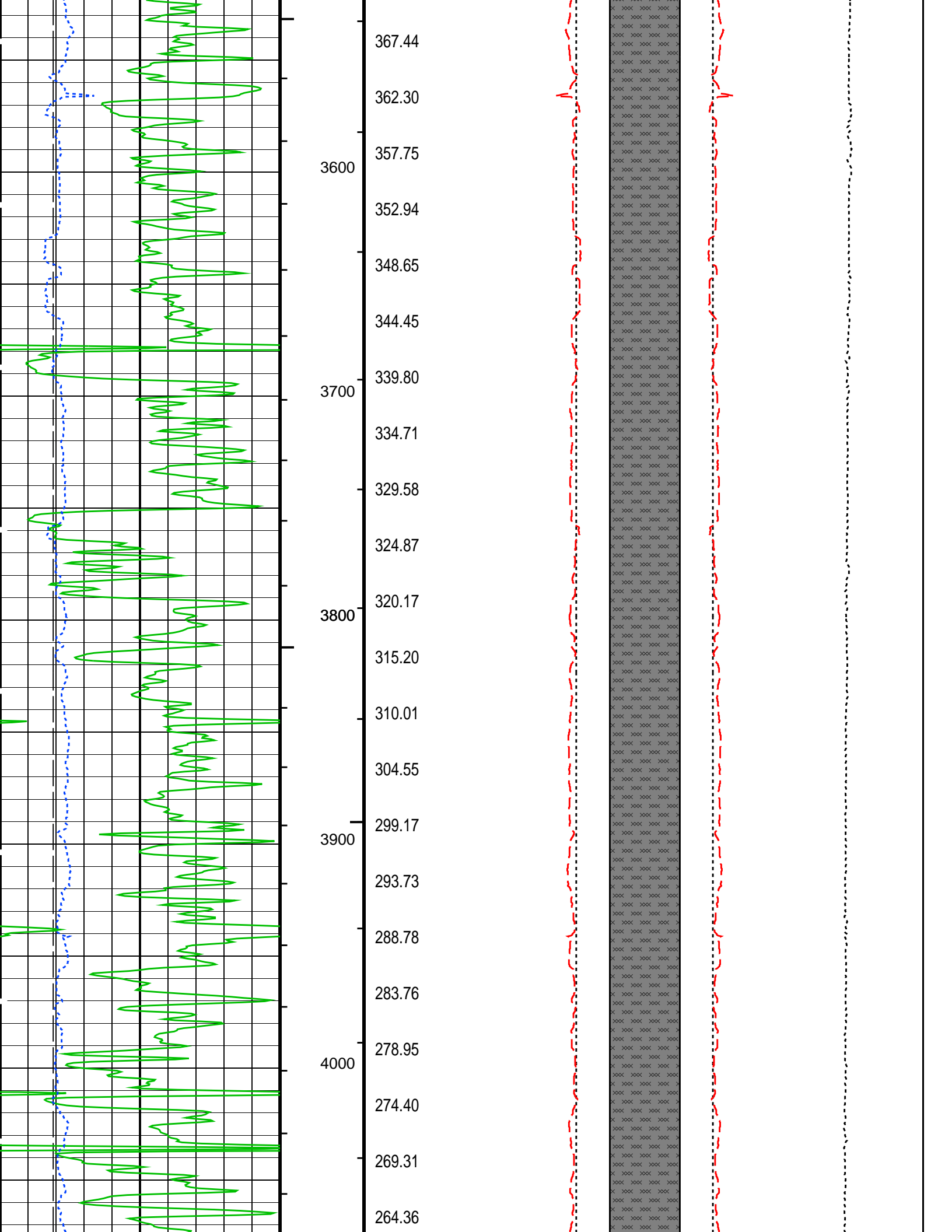


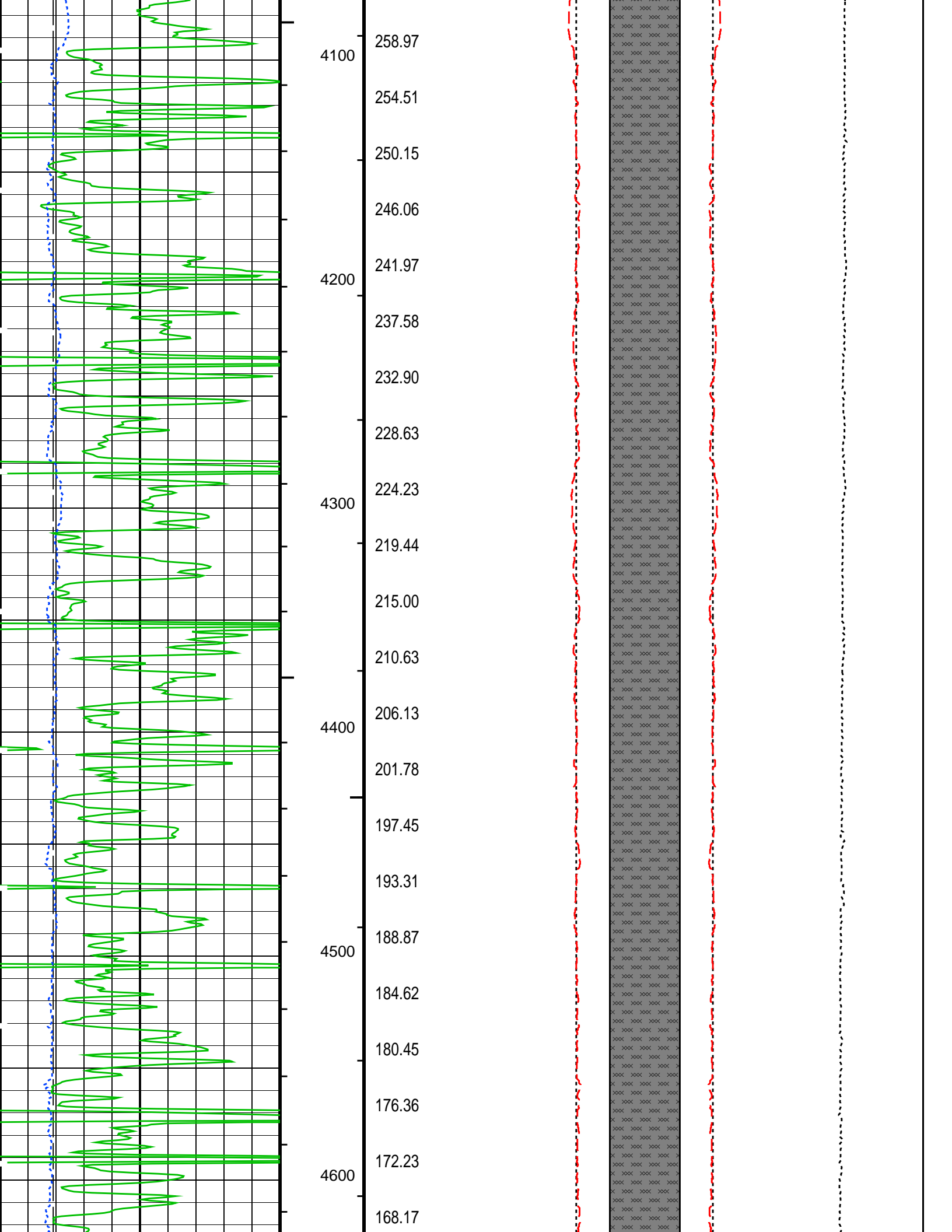


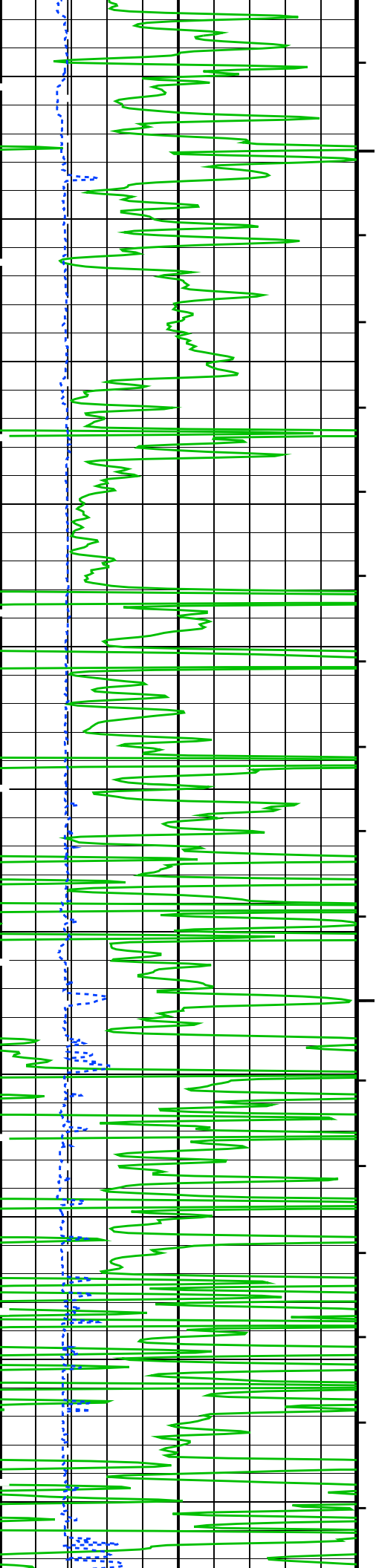




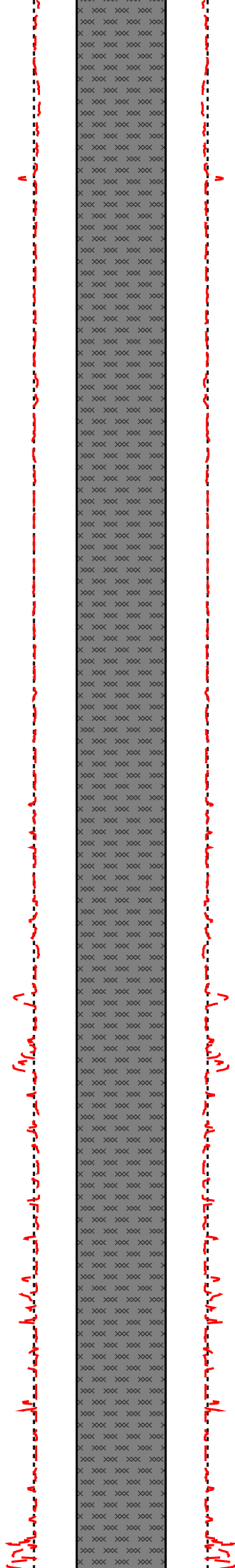








164.09  
160.15  
155.96  
151.81  
147.60  
143.44  
139.12  
134.81  
130.48  
126.21  
121.98  
117.71  
113.47  
109.28  
104.58  
100.05  
96.02  
91.90  
87.48  
83.19  
79.04  
74.33





Time Mark Every 60 S

Integrated Hole Volume Minor Pip Every 10 F3

Integrated Hole Volume Major Pip Every 100 F3

Integrated Cement Volume Minor Pip Every 10 F3

Integrated Cement Volume Major Pip Every 100 F3

Parameters			
DLIS Name	Description	Value	
	STI: Stuck Tool Indicator		
LBFR	Trigger for MAXIS First Reading Label	TDL	
STKT	STI Stuck Threshold	2.5	FT
TDD	Total Depth – Driller	5536.00	FT
TDL	Total Depth – Logger	5530.00	FT
	HOLEV: Integrated Hole/Cement Volume		
FCD	Future Casing (Outer) Diameter	5.5	IN
HVCS	Integrated Hole Volume Caliper Selection	AUTOMATIC	
	System and Miscellaneous		
BS	Bit Size	7.875	IN
DORL	Depth Offset for Repeat Analysis	0.0	FT
TD	Total Depth	5530	FT

Format: G\_DCAL\_FORMAT

Vertical Scale: 2" per 100'

Graphics File Created: 07–Jan–2011 22:18

OP System Version: 18C0–147

HILTB–CTS

18C0–147

Output DLIS Files			
DEFAULT	AIT_TLD_MCFL_CNL_010LUP	FN:9	PRODUCER 07–Jan–2011 22:18

Company: Vecta Oil & Gas LTD

Schlumberger

Well: Torreys 44–33

Field: Wildcat

County: Cheyenne

State: Colorado

Platform Express

Cement Volume

Caliper