

Vecta



Oil & Gas Ltd.

Scale 1:240 (5"=100') Imperial
Measured Depth Log

Well Name: Torreys 44-33
Location: SESE Sec 33-T13S-R47W, Cheyenne County, Colorado
License Number: API: 05-017-07699
Spud Date: 12/19/10
Surface Coordinates: 645' FSL & 646' FEL
Bottom Hole Coordinates: Same

Region: Wildcat
Drilling Completed: 01/07/11

Ground Elevation (ft): 4305' K.B. Elevation (ft): 4316'
Logged Interval (ft): 3940' To: 5535' Total Depth (ft): 5530' LTD
Formation: Morrow, (TD in Spergen).
Type of Drilling Fluid: LSND, Hydro Resources

Printed by WellSight Log Viewer from WellSight Systems 1-800-447-1534 www.WellSight.com

OPERATOR

Company: Vecta Oil & Gas Ltd
Address: 575 Union Blvd, Suite 208
Lakewood, CO 80228
Tel. (303) 945-2860

GEOLOGIST

Name: Ryan Scribner
Company: Goolsby Brothers and Associates
Address: 575 Union Blvd., Suite 208
Lakewood, CO 80228

Comments

- 1) 8 5/8" csg set @ 418' KB.
- 2) Contractor: Black Gold Rig #69. Toolpusher: Bob Kliesin
- 3) Plugged and abandoned on January 08, 2011.

ROCK TYPES

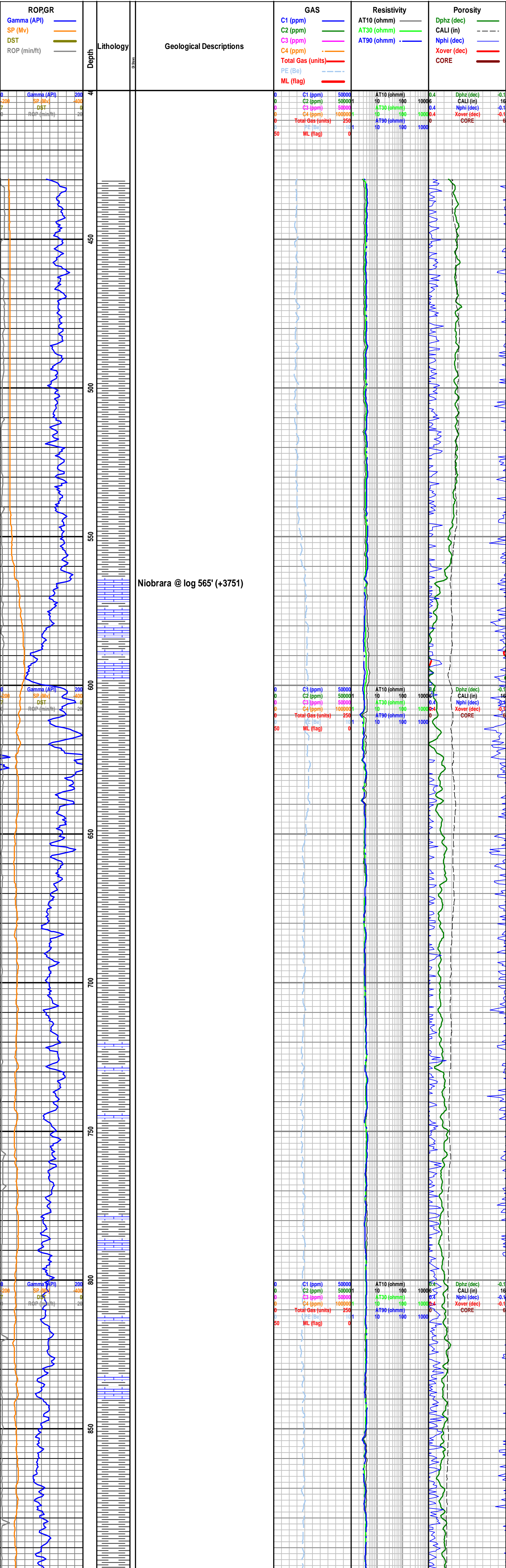
ss_fg+	Clyst	Lmst	Shgy
Carb sh	Coal	Meta	Ss
Anhy	Congl	Mrlst	Till
Bent	Dol	Salt	sltst
Brec	Gyp	Shale	anhy1
Cht	Igne	Shcol	chalk

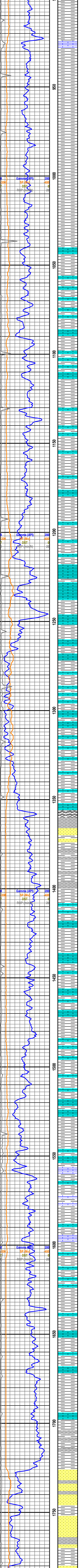
ACCESSORIES

MINERAL	Marl	Coral	Dol
Pyr	Minxl	Crin	Gyp
Anhy	Nodule	Echin	Ls
Arggrn	Phos	Fish	Mrst
Arg	Pyr	Foram	Sltstrg
Bent	Salt	Fossil	Ssstrg
Bit	Sandy	Gastro	
Brecfrag	Silt	Oolite	TEXTURE
Calc	Sil	Ostra	Boundst
Carb	Sulphur	Pelec	Chalky
Chtdk	Tuff	Pellet	Cryxln
Chtlt		Pisolite	Earthy
Dol	FOSSIL	Plant	Finexln
Feldspar	Algae	Strom	Grainst
Ferrpel	Amph	STRINGER	Lithogr
Ferr	Belm	Anhy	Microxln
Glau	Bioclst	Arg	Mudst
Gyp	Brach	Bent	Packst
Hvymin	Bryozoa	Coal	Wackest
Kaol	Cephal		

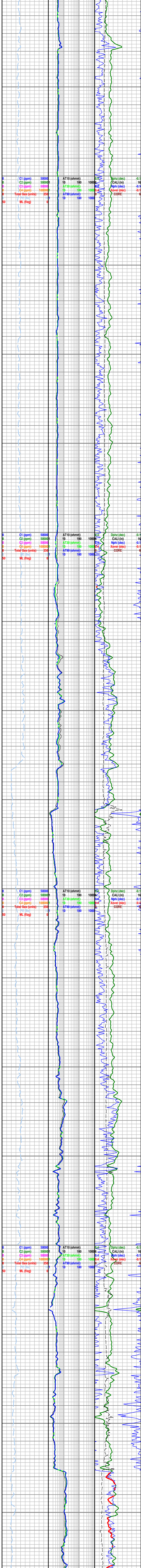
OTHER SYMBOLS

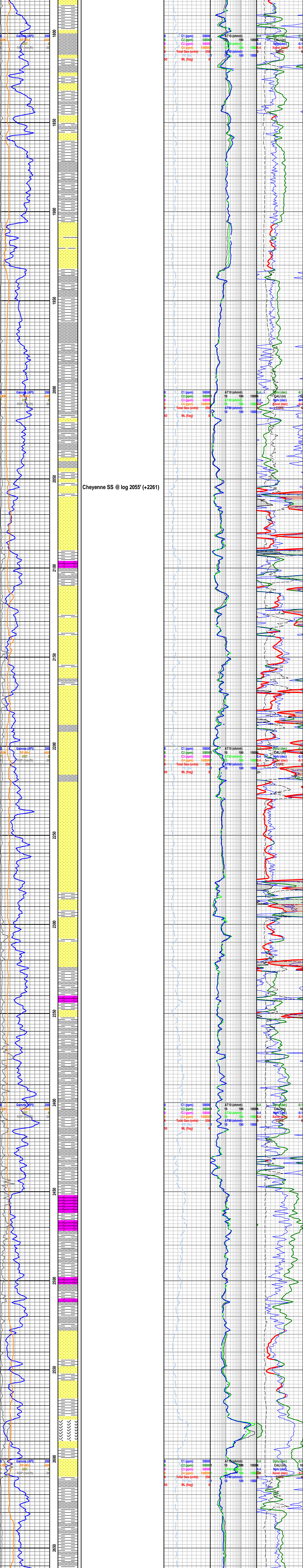
POROSITY TYPE	Moderate	near even	Sidewall
Earthy	Poor	Ques	New bit casingr
Fenest		Dead	casingr
Fracture	ROUNDING	vspotty	Survey
Inter	Rounded	INTERVALS	Off bottom conn
Moldic	Subrnd	Core	perfs
Organic	Subang	Dst	Survey(red)
Pinpoint		casing	
Vuggy	OIL SHOWS	EVENTS	
SORTING	Even	Rft	
Well	Spotted		

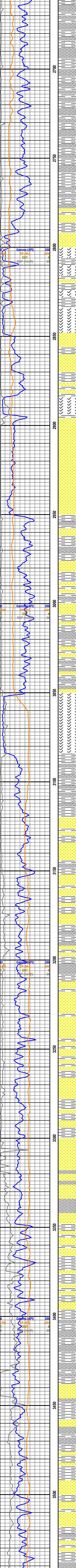




Dakota SS @ log 1727' (+2589)







Blaine @ log 2801' (+1515)

Stone Corral @ log 3051' (+1265)

