

T12N, R97W, 6th P.M.

WEXPRO COMPANY

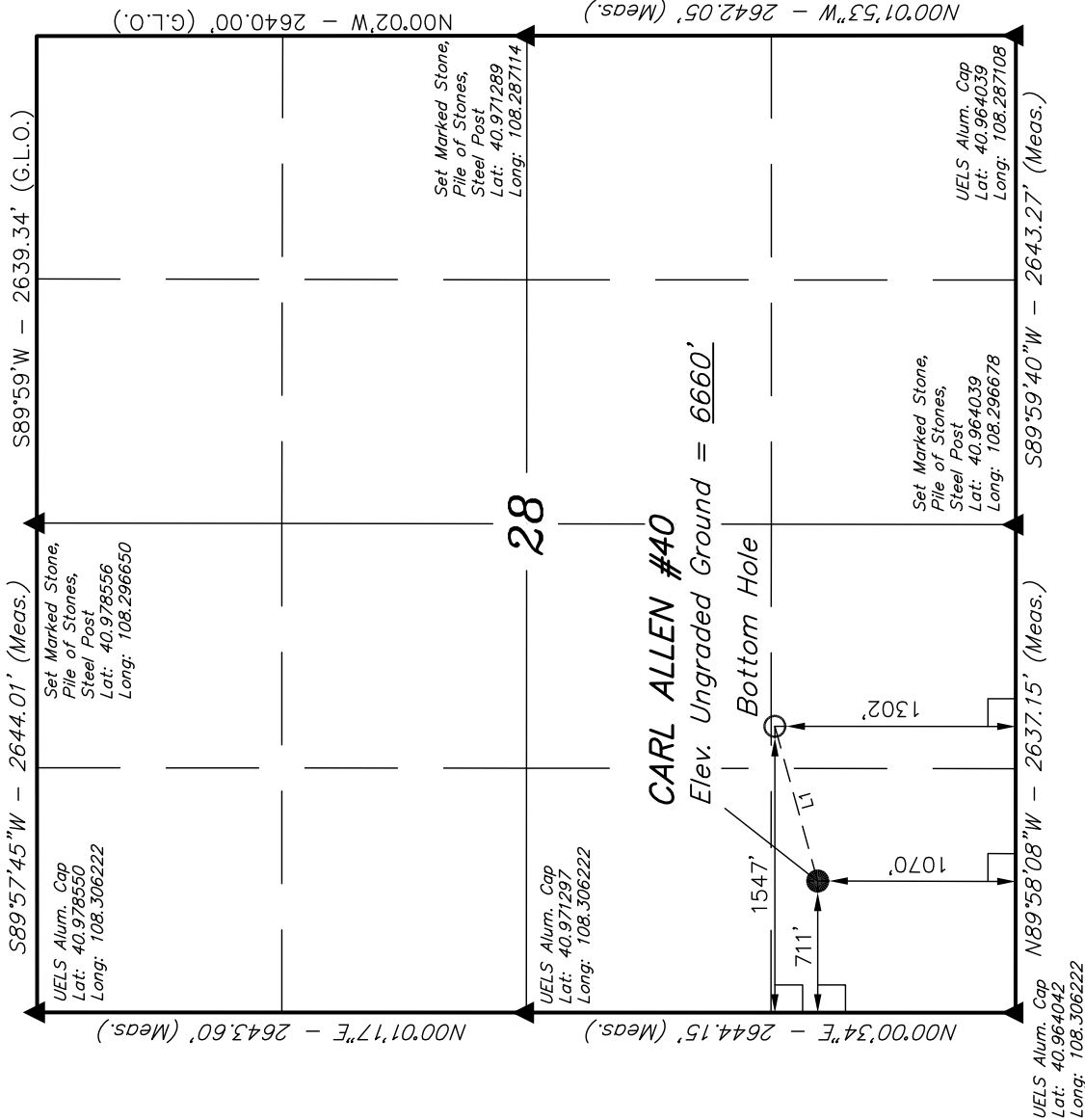
Well location, CARL ALLEN #40, located as shown in the SW 1/4 SW 1/4 of Section 28, T12N, R97W, 6th P.M., Moffat County, Colorado.

BASIS OF ELEVATION

SPOT ELEVATION LOCATED AT THE SOUTHEAST CORNER OF SECTION 4, T11N, R97W, 6th P.M. TAKEN FROM THE POWDER WASH QUADRANGLE, COLORADO, MOFFAT COUNTY, 7.5 MINUTE SERIES (TOPOGRAPHICAL MAP) PUBLISHED BY THE UNITED STATES DEPARTMENT OF THE INTERIOR, GEOLOGICAL SURVEY. SAID ELEVATION IS MARKED AS BEING 6644 FEET.

BASIS OF BEARINGS

BASIS OF BEARINGS IS A G.P.S. OBSERVATION.



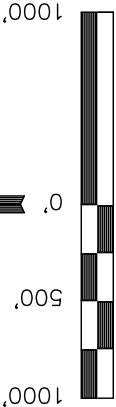
LINE TABLE		
LINE	DIRECTION	LENGTH
L1	N74°32'21\"E	868.90'

LEGEND:

- = 90° SYMBOL
- = PROPOSED WELL HEAD.
- ▲ = SECTION CORNERS LOCATED

NAD 83 (TARGET BOTTOM HOLE)		NAD 83 (SURFACE LOCATION)	
LATITUDE = 40°58'03.40"	(40.967611)	LATITUDE = 40°58'01.12"	(40.966978)
LONGITUDE = 108°18'02.24"	(108.300622)	LONGITUDE = 108°18'13.14"	(108.303650)
NAD 27 (TARGET BOTTOM HOLE)		NAD 27 (SURFACE LOCATION)	
LATITUDE = 40°58'03.53"	(40.967647)	LATITUDE = 40°58'01.25"	(40.967014)
LONGITUDE = 108°17'59.90"	(108.299972)	LONGITUDE = 108°18'10.80"	(108.303000)

PDOP = 1.4



S C A L E

CERTIFICATE

THIS IS TO CERTIFY THAT THE ABOVE PLAT WAS PREPARED FROM FIELD NOTES OF ACTUAL SURVEYS MADE BY ME OR UNDER MY SUPERVISION AND THAT THE SAME ARE TRUE AND CORRECT TO THE BEST OF MY KNOWLEDGE AND BELIEF.

REVISOR: 01-14-11 S.L.
REVISED: 09-17-10

REGISTERED LAND SURVEYOR
REGISTRATION NO. 17492
STATE OF COLORADO

UINTAH ENGINEERING & LAND SURVEYING
85 SOUTH 200 EAST - VERNAL, UTAH 84078
(435) 789-1017

SCALE 1" = 1000'	DATE SURVEYED: 07-21-10	DATE DRAWN: 09-02-10
PARTY D.K. J.D. C.H.	REFERENCES G.L.O. PLAT	
WEATHER WARM	FILE	
		WEXPRO COMPANY