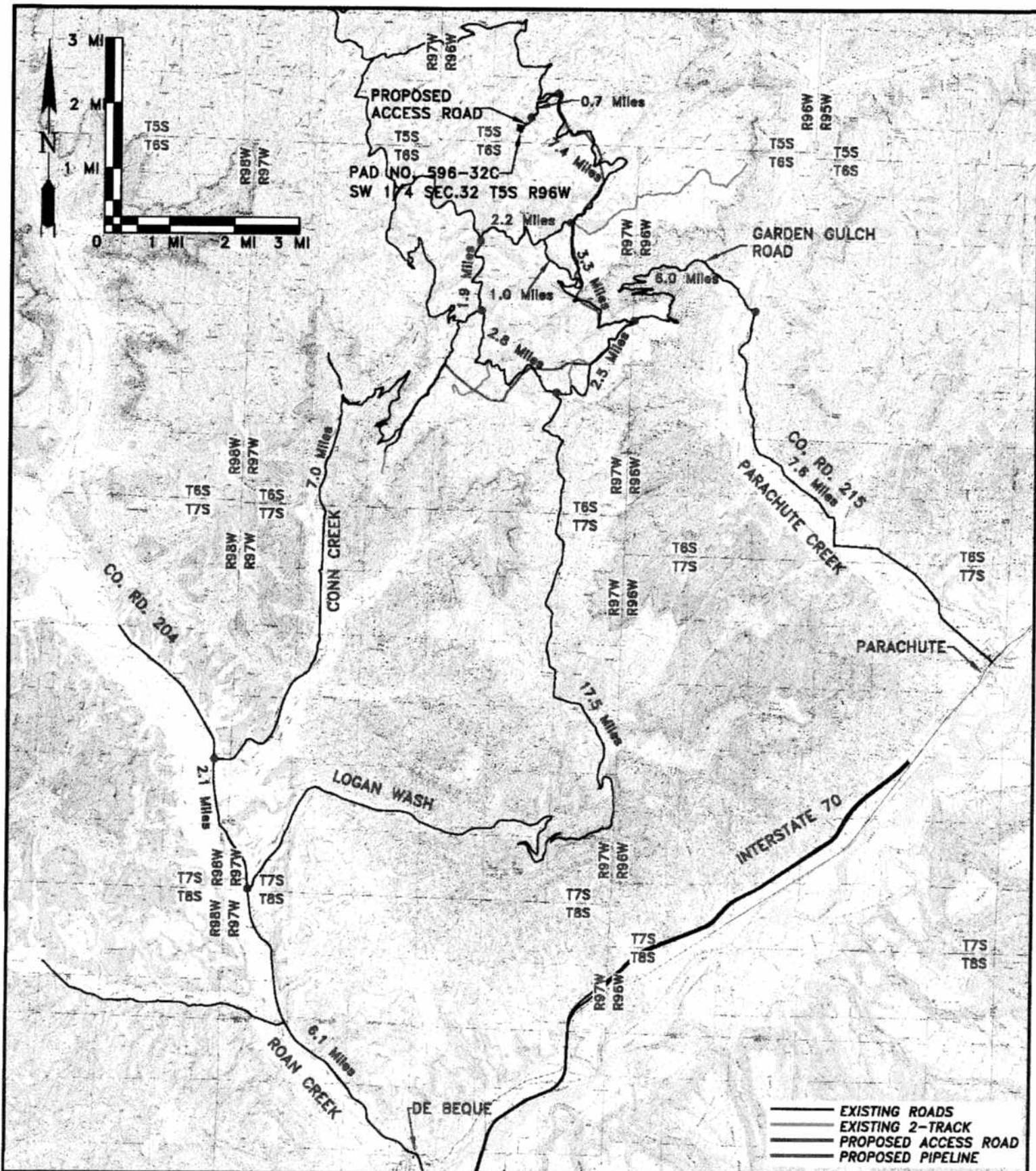


Marathon Oil Corporation
Piceance Asset

Pad 596-32C

Drilling Well Packet Data



**WILLIAM H. SMITH
& ASSOCIATES P.C.
SURVEYING CONSULTANTS**

550 EAST SECOND NORTH PHONE: 307-875-3638
GREEN RIVER, WY 307-875-3639
www.whsmithpc.com

**PAD NUMBER
596-32C
LOCATED IN THE
SW/4, SECTION 32,
TOWNSHIP 5 SOUTH,
RANGE 96 WEST.**

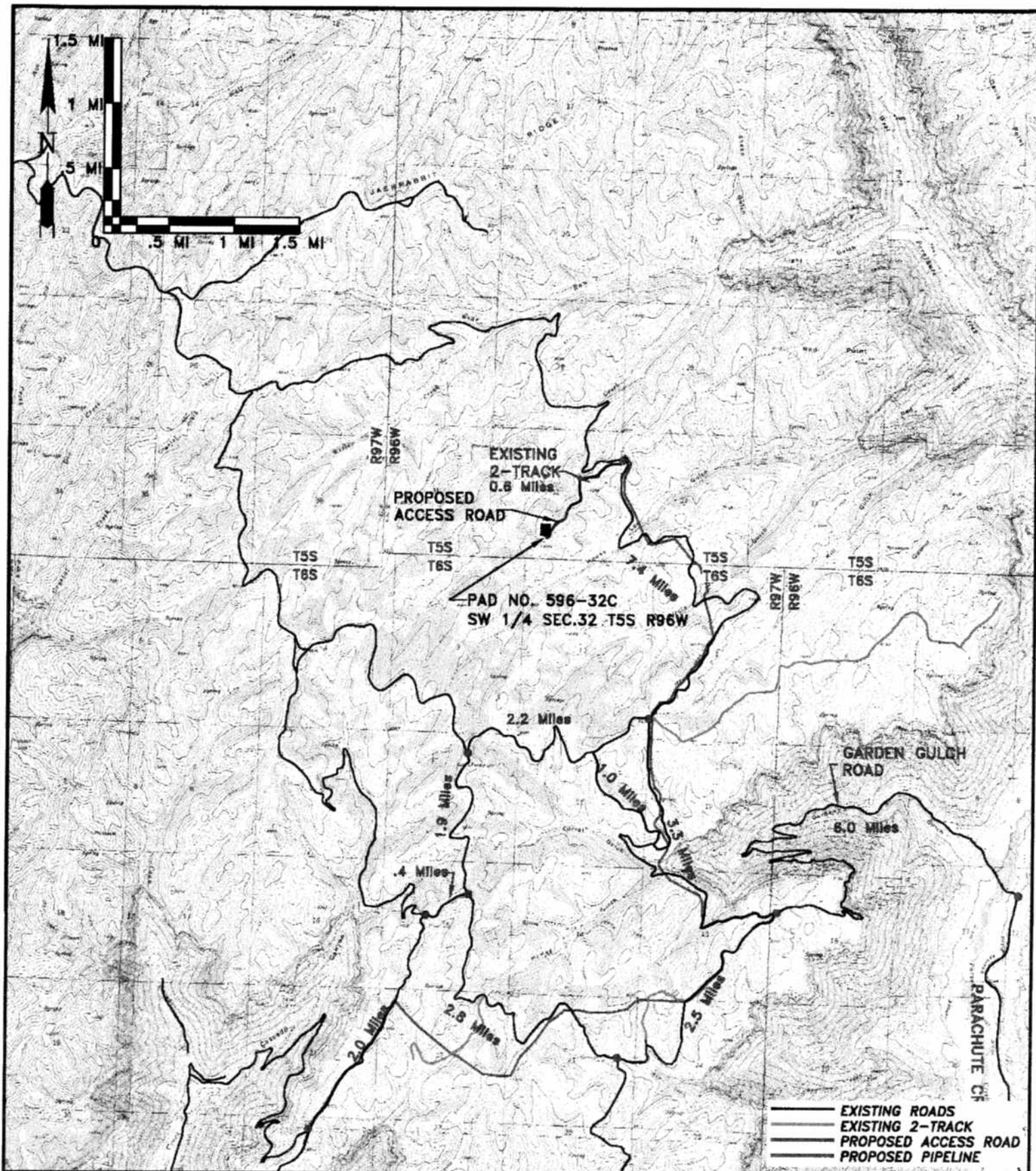
**VICINITY MAP FOR
MARATHON OIL COMPANY
P.O. BOX 3128
HOUSTON, TX 77253
5555 SAN FELIPE
HOUSTON, TX 77056
TOPO MAP A1**

DRAWN BY: CED

JOB NO: 26099

DATE: 07/01/2008

SCALE: 1" = 2 MILES



**WILLIAM H. SMITH
& ASSOCIATES P.C.
SURVEYING CONSULTANTS**

550 EAST SECOND NORTH PHONE: 307-875-3638
GREEN RIVER, WY 307-875-3639
www.whsmithpc.com

**PAD NUMBER
596-32C
LOCATED IN THE
SW/4, SECTION 32,
TOWNSHIP 5 SOUTH,
RANGE 96 WEST.**

**VICINITY MAP FOR
MARATHON OIL COMPANY
P.O. BOX 3128
HOUSTON, TX 77253
5555 SAN FELIPE
HOUSTON, TX 77056**

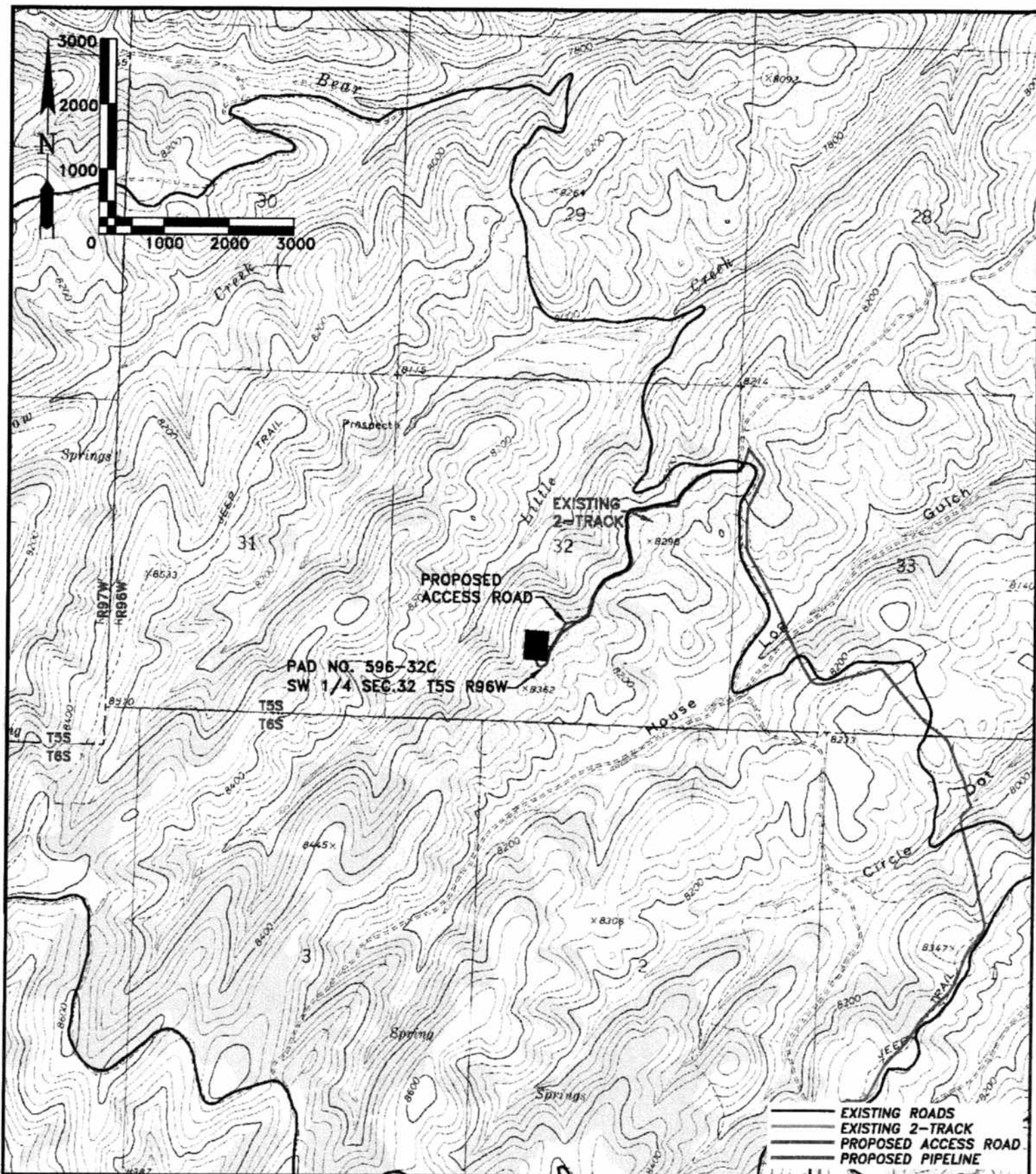
DRAWN BY: CED

JOB NO: 26099

DATE: 07/01/2008

SCALE: 1" = 1 MILE

TOPO MAP A2



**WILLIAM H. SMITH
& ASSOCIATES P.C.
SURVEYING CONSULTANTS**

560 EAST SECOND NORTH PHONE: 307-876-3638
GREEN RIVER, WY 307-876-3639
www.whsmithpc.com

**PAD NUMBER
596-32C
LOCATED IN THE
SW/4, SECTION 32,
TOWNSHIP 5 SOUTH,
RANGE 96 WEST.**

**VICINITY MAP FOR
MARATHON OIL COMPANY
P.O. BOX 3128
HOUSTON, TX 77253
5555 SAN FELIPE
HOUSTON, TX 77056**

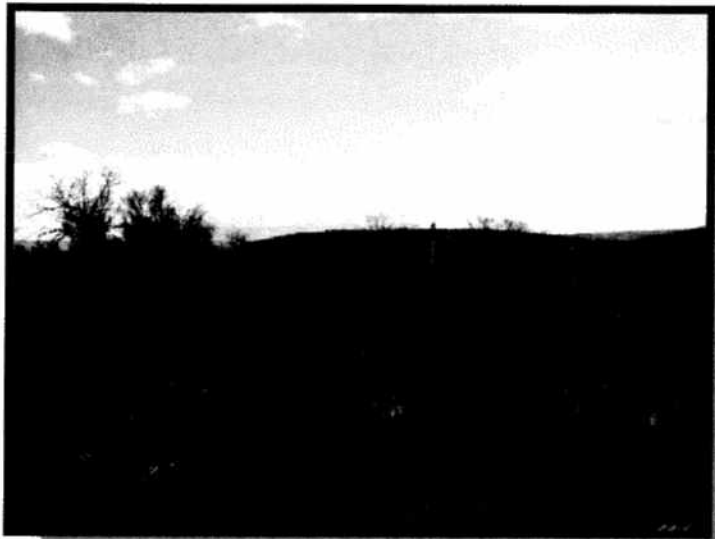
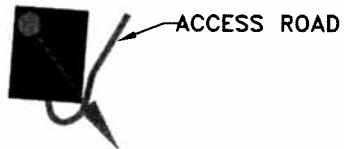
DRAWN BY: CED

JOB NO: 26099

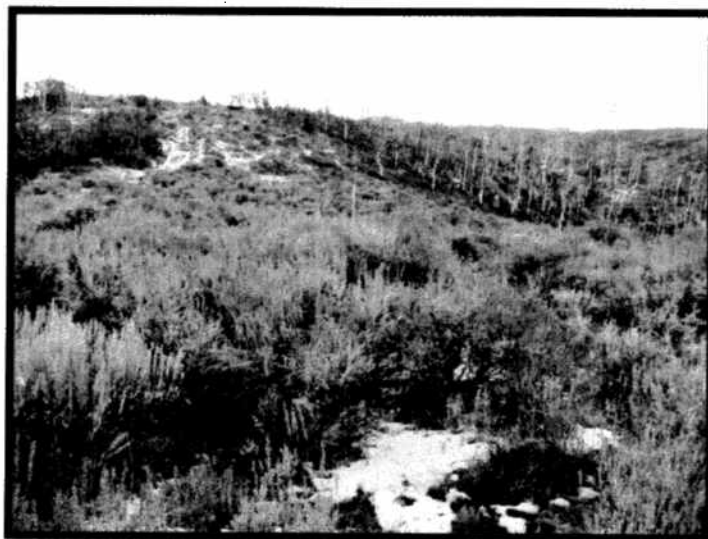
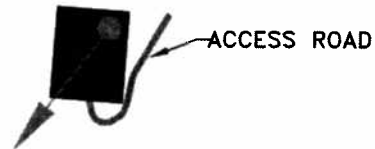
DATE: 07/01/2008

SCALE: 1" = 2000'

TOPO MAP A3



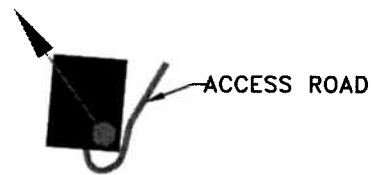
NW CORNER OF PAD LOOKING
SOUTHEASTERLY



NE CORNER OF PAD LOOKING
SOUTHWESTERLY



SW CORNER OF PAD LOOKING
NORTHEASTERLY



SE CORNER OF PAD LOOKING
NORTHWESTERLY



**WILLIAM H. SMITH
& ASSOCIATES P.C.
SURVEYING CONSULTANTS**
550 EAST SECOND NORTH PHONE: 307-875-3638
GREEN RIVER, WY 307-875-3639
www.whsmithpc.com

PAD NUMBER
596-32C
LOCATED IN THE
SW/4, SECTION 32,
TOWNSHIP 5 SOUTH,
RANGE 96 WEST.

PHOTOS FOR
MARATHON OIL COMPANY
P.O. BOX 3128
HOUSTON, TX 77253
5555 SAN FELIPE
HOUSTON, TX 77056

DRAWN BY: CED

JOB NO: 26099

DATE: 07/01/2008

SCALE: N.T.S.

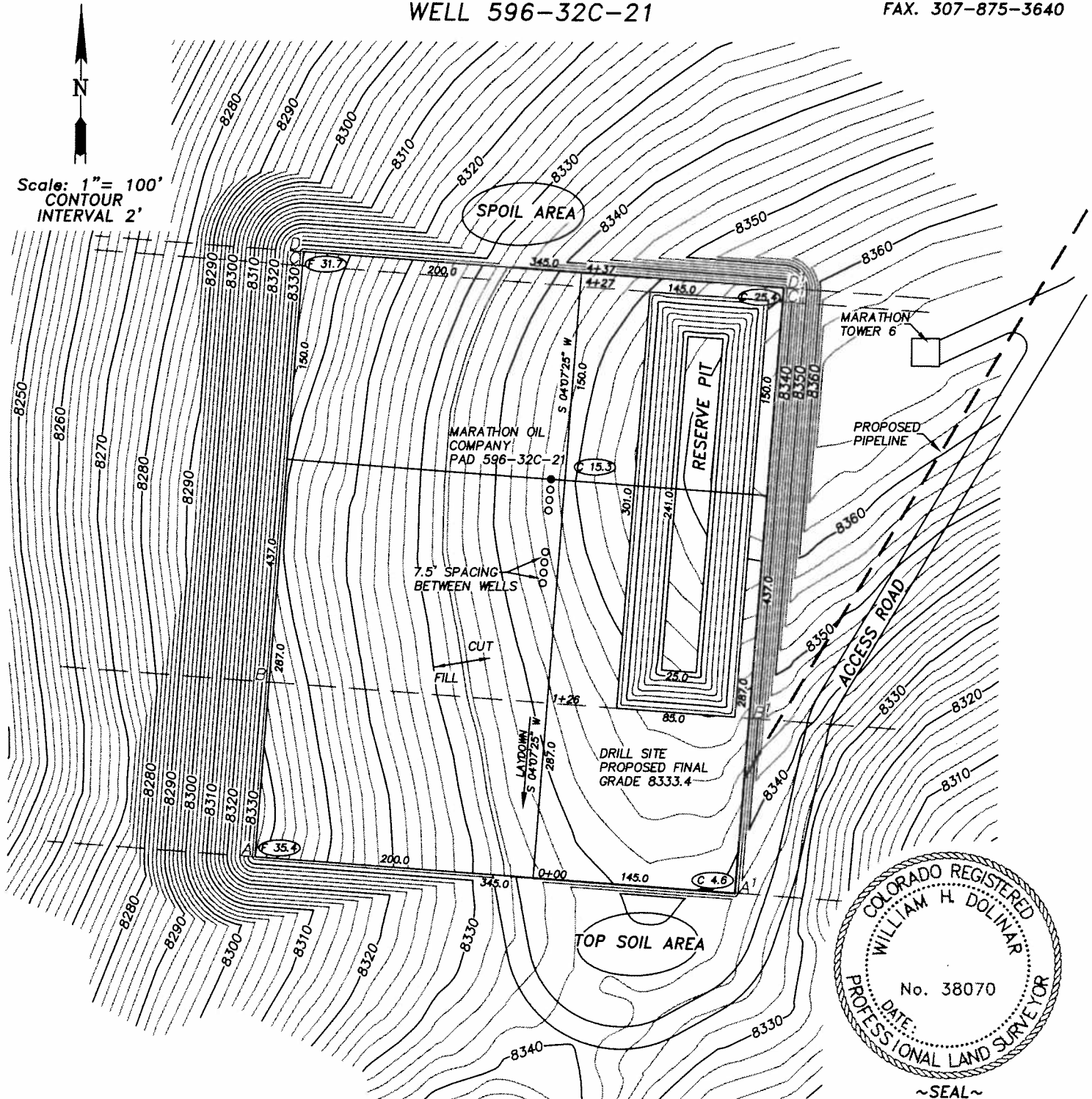
PHOTO B1

WILLIAM H. SMITH & ASSOCIATES P.C.
SURVEYING CONSULTANTS
MARATHON OIL COMPANY

WELL 596-32C-21

P.O. BOX 820
GREEN RIVER, WYOMING 82935

550 EAST 2ND NORTH
PH. 307-875-3638
FAX. 307-875-3640



RESERVE PIT SIZE
301' X 85' X 15'
SLOPE = 2:1

RESERVE PIT CAPACITY
40,607 BBLs FULL
32,039 BBLs WORKING
CAPACITY WITH 2' FREE BOARD

JOB NO. 26099
07/01/2008 CED
PAD596-32C/PAD596-32C.DWG

CUT SLOPES: 1:1
FILL SLOPES: 1.5:1
QUANTITIES:
TOTAL CUT = 64,356 BANK CUBIC YARDS
TOTAL FILL = 58,101 BANK CUBIC YARDS
TOPSOIL AT 6 INCHES OF DEPTH = 3,915 BANK CUBIC YARDS
SPOIL = 2,341 BANK CUBIC YARDS
DISTURBED AREA = 211,420 SQ. FT. OR 4.85 ACRES

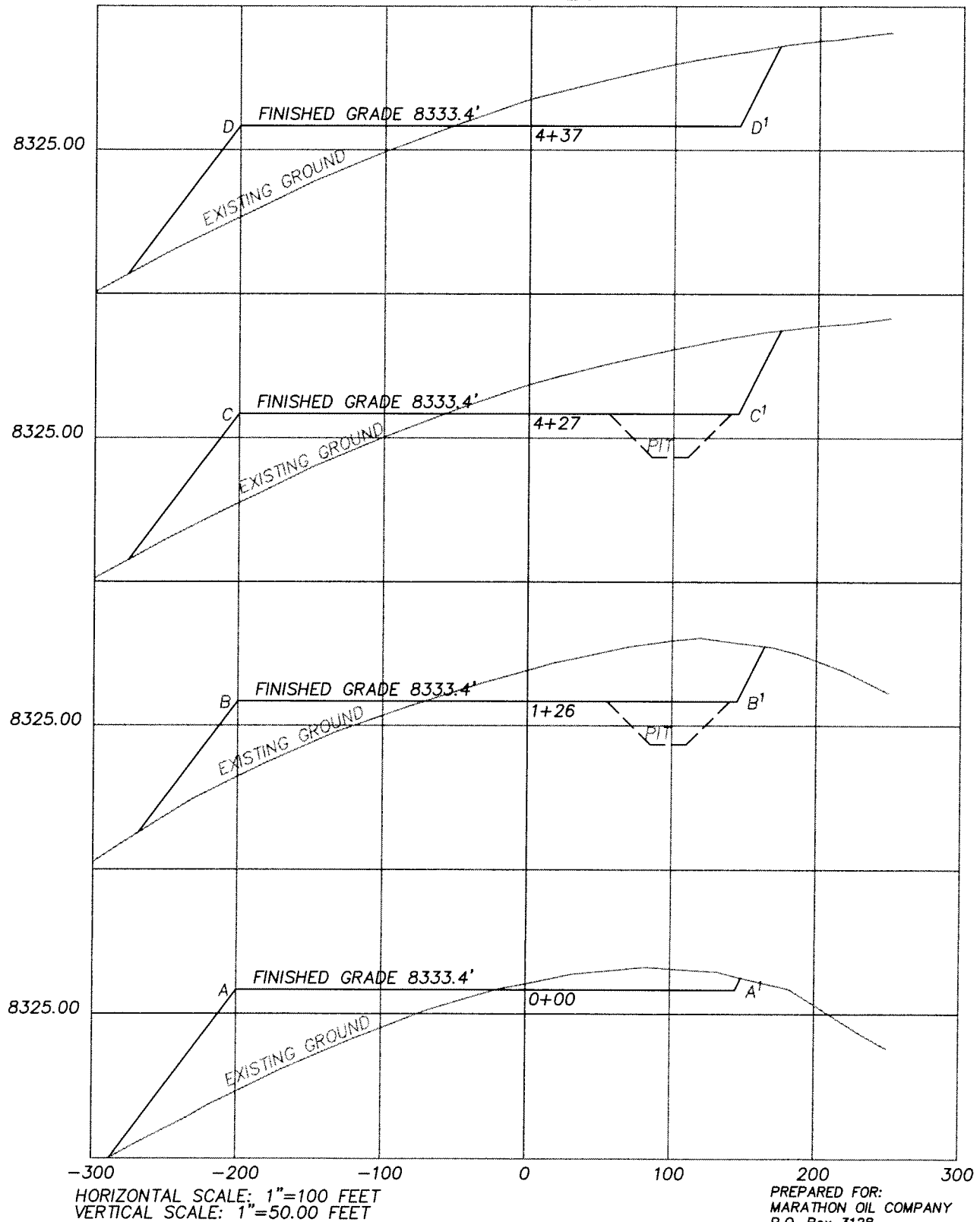
PREPARED FOR:
MARATHON OIL COMPANY
P.O. Box 3128
Houston, TX 77253
5555 San Felipe
Houston, TX 77056

LOCATION:
WELL 596-32C-21
2325' FWL and 1248' FSL WELL FALLS
WITHIN THE SW 1/4 SECTION 32,
T 5 S, R 96 W, 6TH PM.
GARFIELD COUNTY, COLORADO
SHEET 1 OF 4

WILLIAM H. SMITH & ASSOCIATES P.C.
SURVEYING CONSULTANTS
MARATHON OIL COMPANY
PAD 596-32C

P.O. BOX 820
GREEN RIVER, WYOMING 82935

550 EAST 2ND NORTH
PH. 307-875-3638
FAX. 307-875-3640



CUT SLOPES: 1:1
FILL SLOPES: 1.5:1
QUANTITIES:
TOTAL CUT = 64,356 BANK CUBIC YARDS
TOTAL FILL = 58,101 BANK CUBIC YARDS
TOPSOIL AT 6 INCHES OF DEPTH = 3,915 BANK CUBIC YARDS
SPOIL = 2,341 BANK CUBIC YARDS
DISTURBED AREA = 211,420 SQ. FT. OR 4.85 ACRES

JOB NO. 26099
07/01/2008 CED
PAD596-32C/PAD596-32C.DWG

PREPARED FOR:
MARATHON OIL COMPANY
P.O. Box 3128
Houston, TX 77253
5555 San Felipe
Houston, TX 77056

LOCATION:
PAD 596-32C
WITHIN THE SW 1/4 SECTION 32,
T 5 S, R 96 W, 6TH PM.
GARFIELD COUNTY, COLORADO
SHEET 2 OF 4

WILLIAM H. SMITH & ASSOCIATES P.C.
SURVEYING CONSULTANTS
MARATHON OIL COMPANY

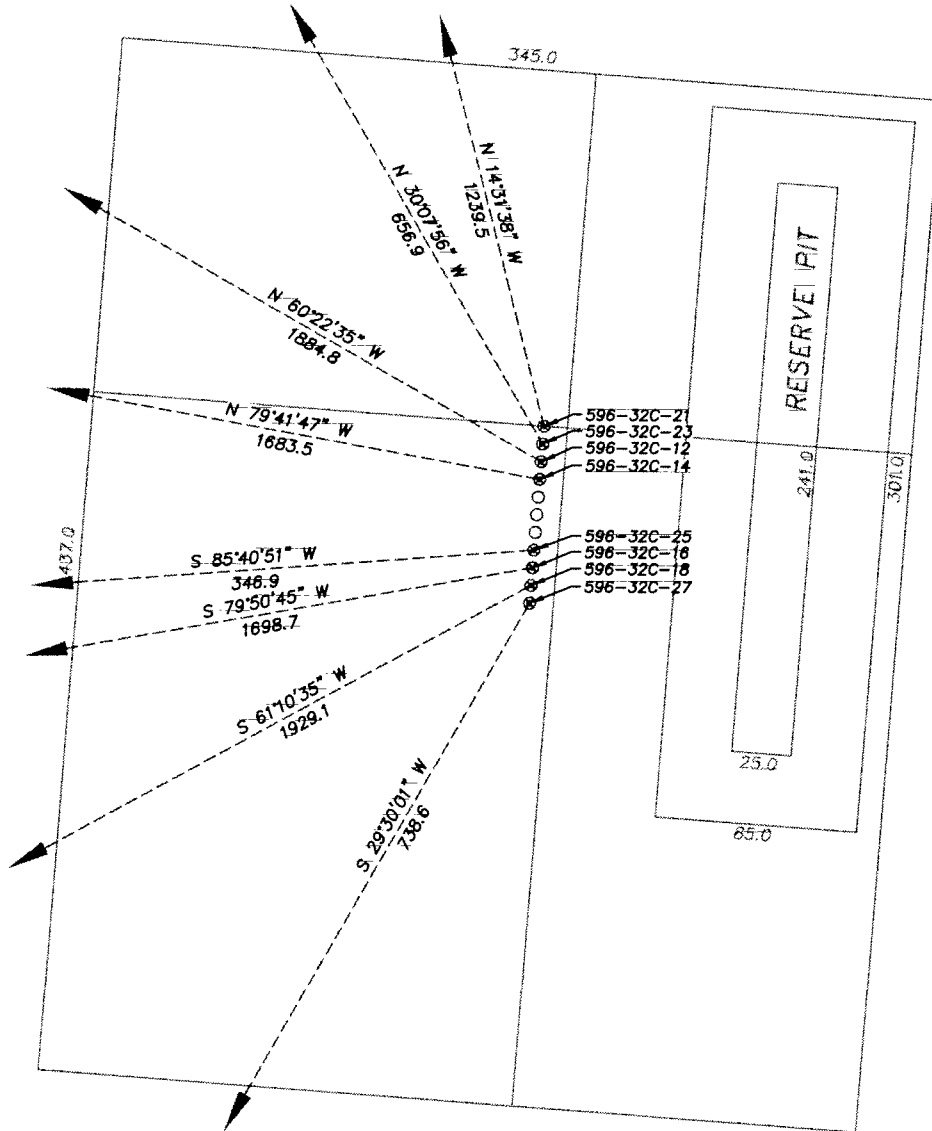
P.O. BOX 820
GREEN RIVER, WYOMING 82935

550 EAST 2ND NORTH
PH. 307-875-3638
FAX. 307-875-3640

PAD 596-32C DIRECTION LAYOUT



Scale: 1" = 80'



RESERVE PIT SIZE
301' X 85' X 15'
SLOPE = 2:1

RESERVE PIT CAPACITY
40,607 BBLs FULL
32,039 BBLs WORKING
CAPACITY WITH 2' FREE BOARD

JOB NO. 26099
07/01/2008 CED
PAD596-32C/PAD596-32C DRILL DIRECTION.DWG

PREPARED FOR:
MARATHON OIL COMPANY
P.O. Box 3128
Houston, TX 77253
5555 San Felipe
Houston, TX 77056

LOCATION:
PAD 596-32C
WITHIN THE SW/4 SECTION 32,
T5S, R96W, 6TH PM.
GARFIELD COUNTY, COLORADO
SHEET 3 OF 4

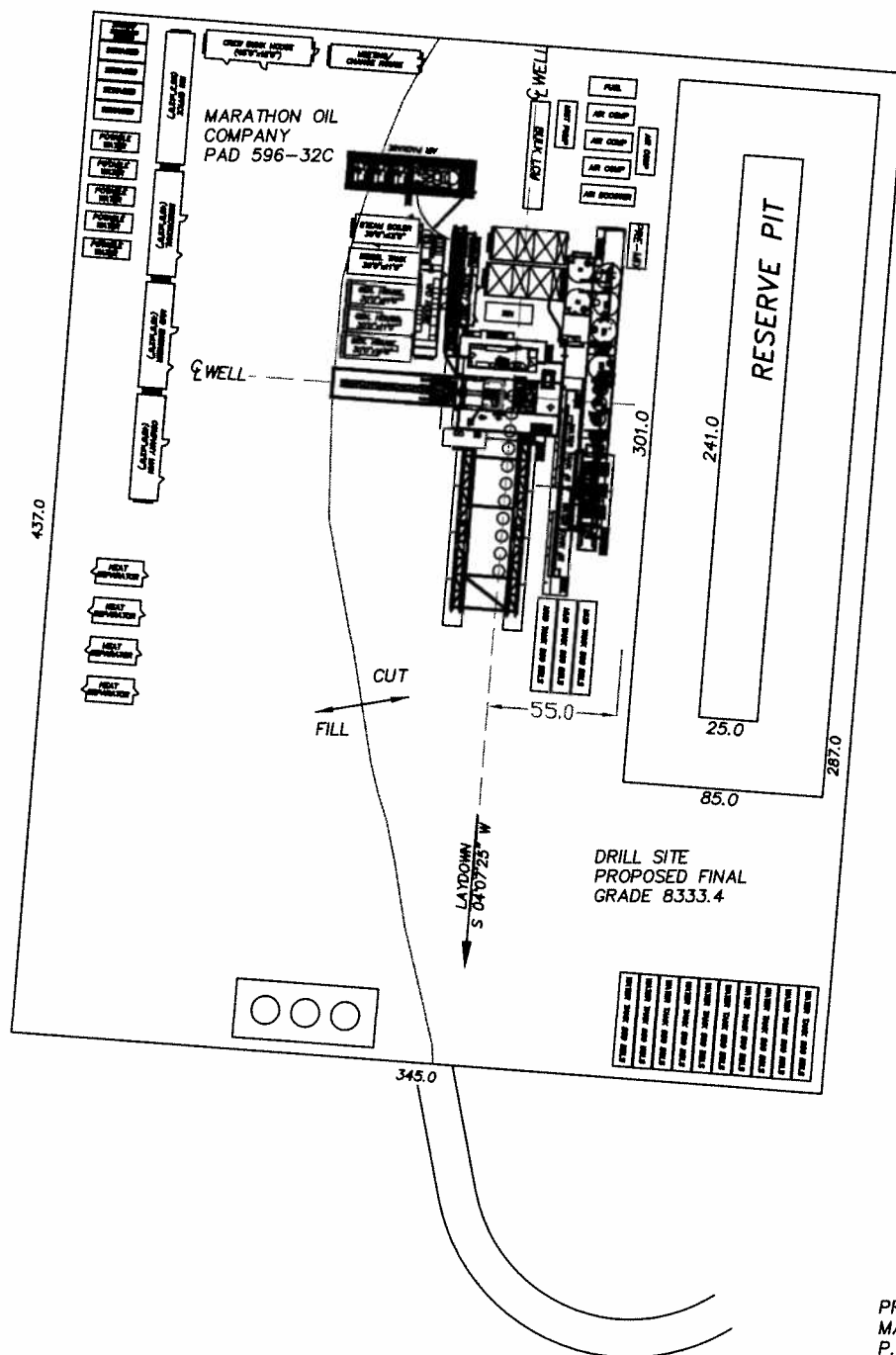
WILLIAM H. SMITH & ASSOCIATES P.C.
SURVEYING CONSULTANTS
MARATHON OIL COMPANY
PAD 596-32C FACILITY LAYOUT

P.O. BOX 820
GREEN RIVER, WYOMING 82935

550 EAST 2ND NORTH
PH. 307-875-3638
FAX. 307-875-3640



Scale: 1" = 80'



RESERVE PIT SIZE
301' X 85' X 15'
SLOPE = 2:1

RESERVE PIT CAPACITY
40,607 BBLs FULL
32,039 BBLs WORKING
CAPACITY WITH 2' FREE BOARD

JOB NO. 26099
07/01/2008 CED
PAD596-32C/PAD596-32C FACILITIES.DWG

PREPARED FOR:
MARATHON OIL COMPANY
P.O. Box 3128
Houston, TX 77253
5555 San Felipe
Houston, TX 77056

LOCATION:
PAD 596-32C
WITHIN THE SW 1/4 SECTION 32,
T 5 S, R 96 W, 6TH PM.
GARFIELD COUNTY, COLORADO
SHEET 4 OF 4

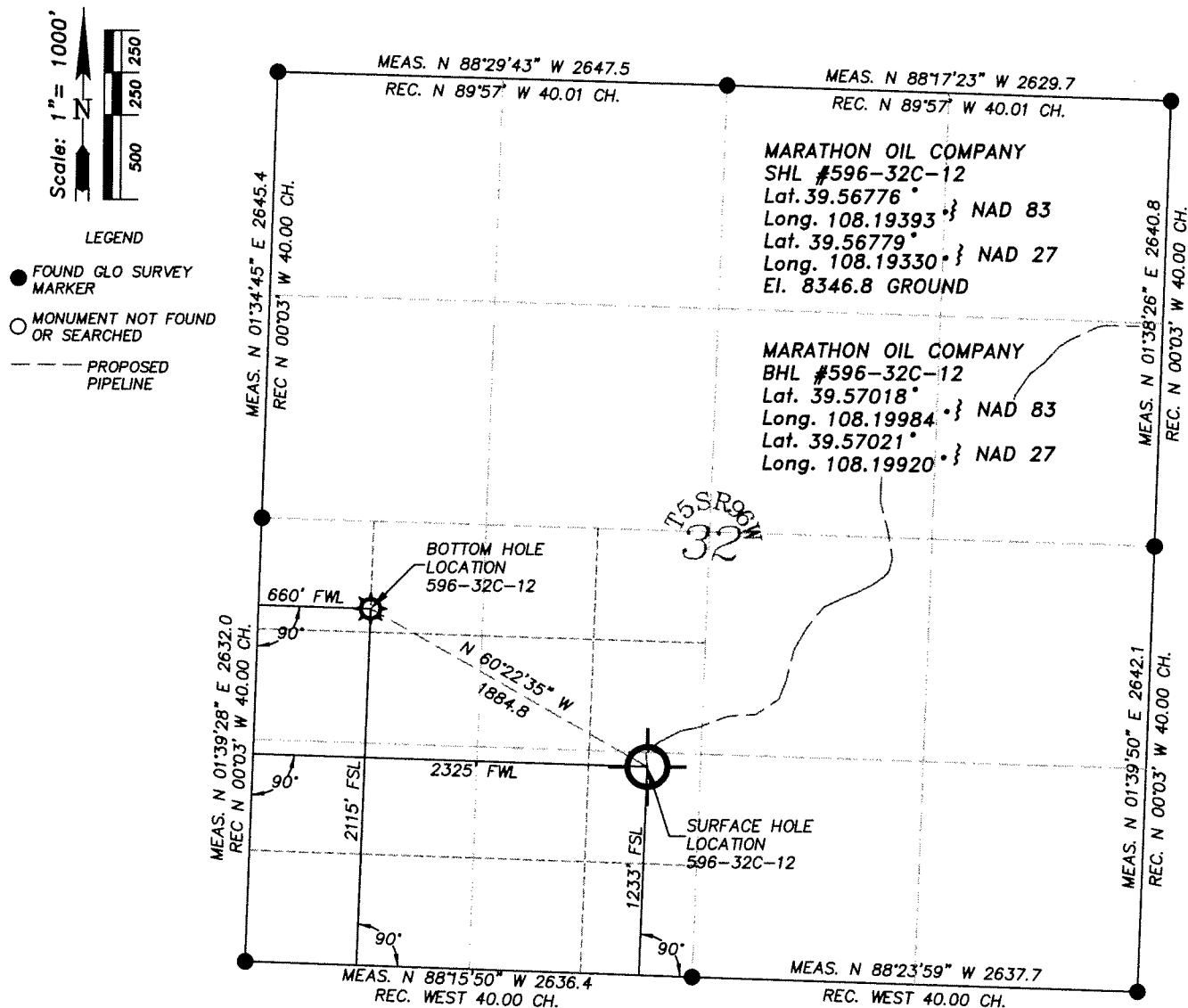
WILLIAM H. SMITH & ASSOCIATES P.C. SURVEYING CONSULTANTS

P.O. BOX 820
GREEN RIVER, WYOMING 82935

T 5 S R 96 W

550 EAST 2ND NORTH
PH. 307-875-3638
FAX. 307-875-3640

PLAT FOR SURFACE AND BOTTOM HOLE LOCATION

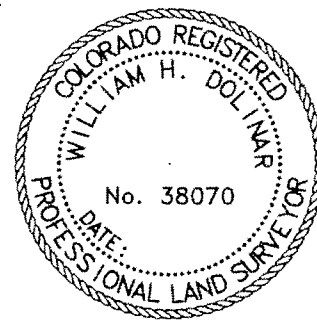


I, William H. Dolinar of Green River, Wyoming hereby certify that in accordance with a request from Frank Krugh for Marathon Oil Company, 5555 San Felipe, Houston, TX 77056. I and or personnel under my direction made a survey on the 30th day of June 2008, for the Surface Hole Location and Elevation of Marathon Oil Company, Well #596-32C-12 being located within the NE/4SE/4SW/4 of Section 32, and the Bottom Hole Location being located within the N/2NW/4SW/4 of Section 32, T 5 S, R 96 W, of the 6th Principal Meridian, Garfield County, State of Colorado, as shown on the above Section Map. Surface Hole Elevation of ungraded ground = 8346.8 feet.
Note: Basis of bearings are grid bearings based from GPS observations.
Horizontal Datum based on Colorado State Plane Coordinate System Central Zone NAD 83.
Vertical Datum based on NAVD 88 NGS Triangulation Station SHALE.
NOTE: Record bearings as shown are based on the General Land Office survey, as approved on April 10, 1919.

LEICA GPS GDOP OF 2.6 ON 06/30/2008
IMPROVEMENTS: NONE
SURFACE USE: GRAZING: SCRUB OAK
AND NATURAL GROUND

JOB NO. 26099
07/01/2008 CED
PAD 596-32C/PAD596-32C PLATS.dwg

596-32C-12
SHEET 1 of 1



~SEAL~

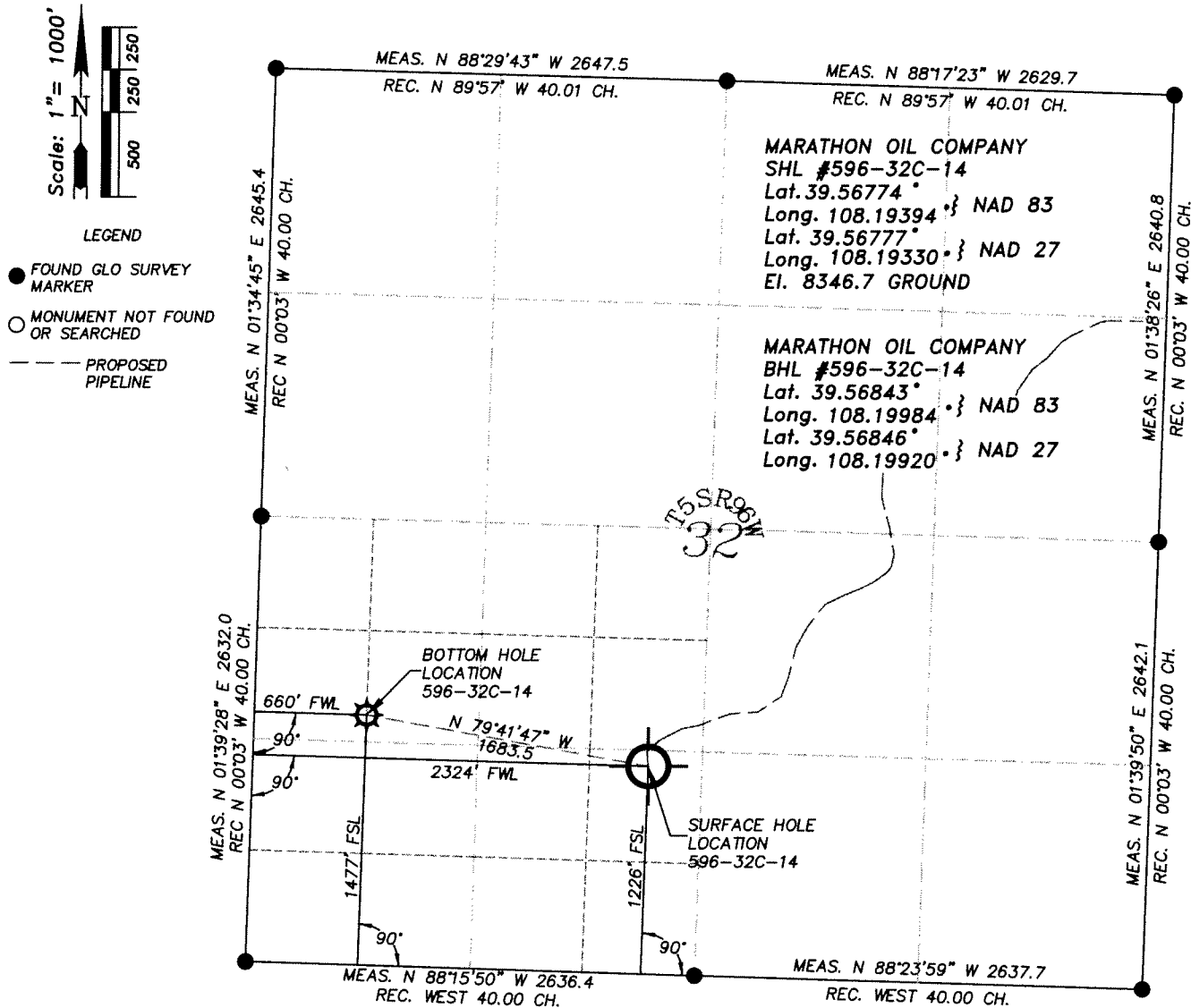
WILLIAM H. SMITH & ASSOCIATES P.C. SURVEYING CONSULTANTS

P.O. BOX 820
GREEN RIVER, WYOMING 82935

T 5 S R 96 W

550 EAST 2ND NORTH
PH. 307-875-3638
FAX. 307-875-3640

PLAT FOR SURFACE AND BOTTOM HOLE LOCATION

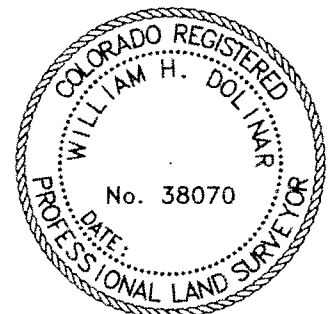


I, William H. Dolinar of Green River, Wyoming hereby certify that in accordance with a request from Frank Krugh for Marathon Oil Company, 5555 San Felipe, Houston, TX 77056. I and or personnel under my direction made a survey on the 30th day of June 2008, for the Surface Hole Location and Elevation of Marathon Oil Company, Well #596-32C-14 being located within the NE/4SE/4SW/4 of Section 32, and the Bottom Hole Location being located within the S/2NW/4SW/4 of Section 32, T 5 S, R 96 W, of the 6th Principal Meridian, Garfield County, State of Colorado, as shown on the above Section Map. Surface Hole Elevation of ungraded ground = 8346.7 feet.
Note: Basis of bearings are grid bearings based from GPS observations.
Horizontal Datum based on Colorado State Plane Coordinate System Central Zone NAD 83.
Vertical Datum based on NAVD 88 NGS Triangulation Station SHALE.
NOTE: Record bearings as shown are based on the General Land Office survey, as approved on April 10, 1919.

LEICA GPS GDOP OF 2.1 ON 06/30/2008
IMPROVEMENTS: NONE
SURFACE USE: GRAZING: SCRUB OAK
AND NATURAL GROUND

JOB NO. 26099
07/01/2008 CED
PAD 596-32C/PAD596-32C PLATS.dwg

596-32C-14
SHEET 1 of 1



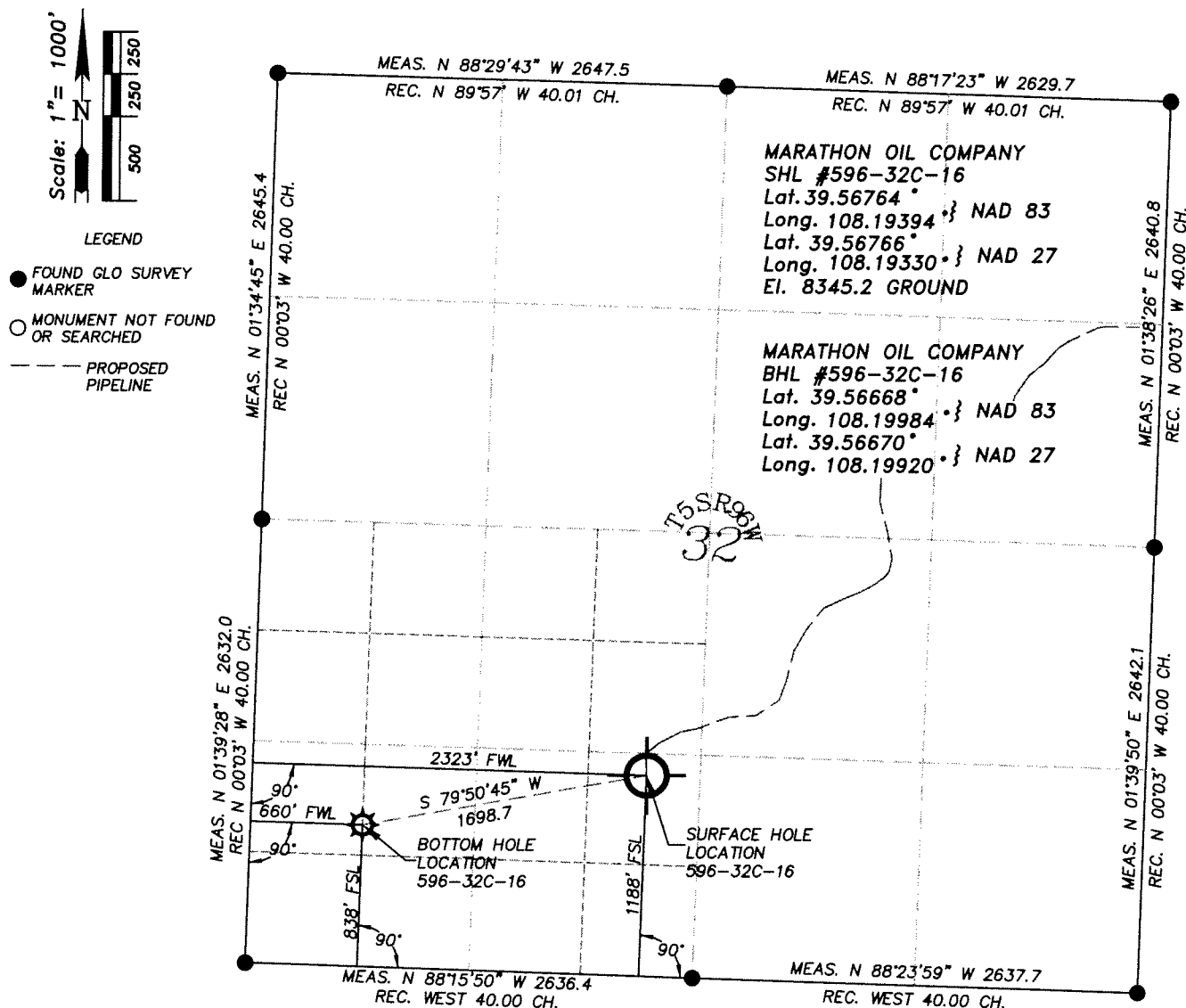
WILLIAM H. SMITH & ASSOCIATES P.C. SURVEYING CONSULTANTS

P.O. BOX 820
GREEN RIVER, WYOMING 82935

T 5 S R 96 W

550 EAST 2ND NORTH
PH. 307-875-3638
FAX. 307-875-3640

PLAT FOR SURFACE AND BOTTOM HOLE LOCATION



I, William H. Dolinar of Green River, Wyoming hereby certify that in accordance with a request from Frank Krugh for Marathon Oil Company, 5555 San Felipe, Houston, TX 77056. I and or personnel under my direction made a survey on the 30th day of June 2008, for the Surface Hole Location and Elevation of Marathon Oil Company, Well #596-32C-16 being located within the NE/4SE/4SW/4 of Section 32, and the Bottom Hole Location being located within the N/2SW/4SW/4 of Section 32, T 5 S, R 96 W, of the 6th Principal Meridian, Garfield County, State of Colorado, as shown on the above Section Map. Surface Hole Elevation of ungraded ground = 8345.2 feet.
Note: Basis of bearings are grid bearings based from GPS observations.
Horizontal Datum based on Colorado State Plane Coordinate System Central Zone NAD 83.
Vertical Datum based on NAVD 88 NGS Triangulation Station SHALE.
NOTE: Record bearings as shown are based on the General Land Office survey, as approved on April 10, 1919.

LEICA GPS GDOP OF 1.9 ON 06/30/2008
IMPROVEMENTS: NONE
SURFACE USE: GRAZING: SCRUB OAK
AND NATURAL GROUND

JOB NO. 26099
07/01/2008 CED
PAD 596-32C/PAD596-32C PLATS.dwg

596-32C-16
SHEET 1 of 1



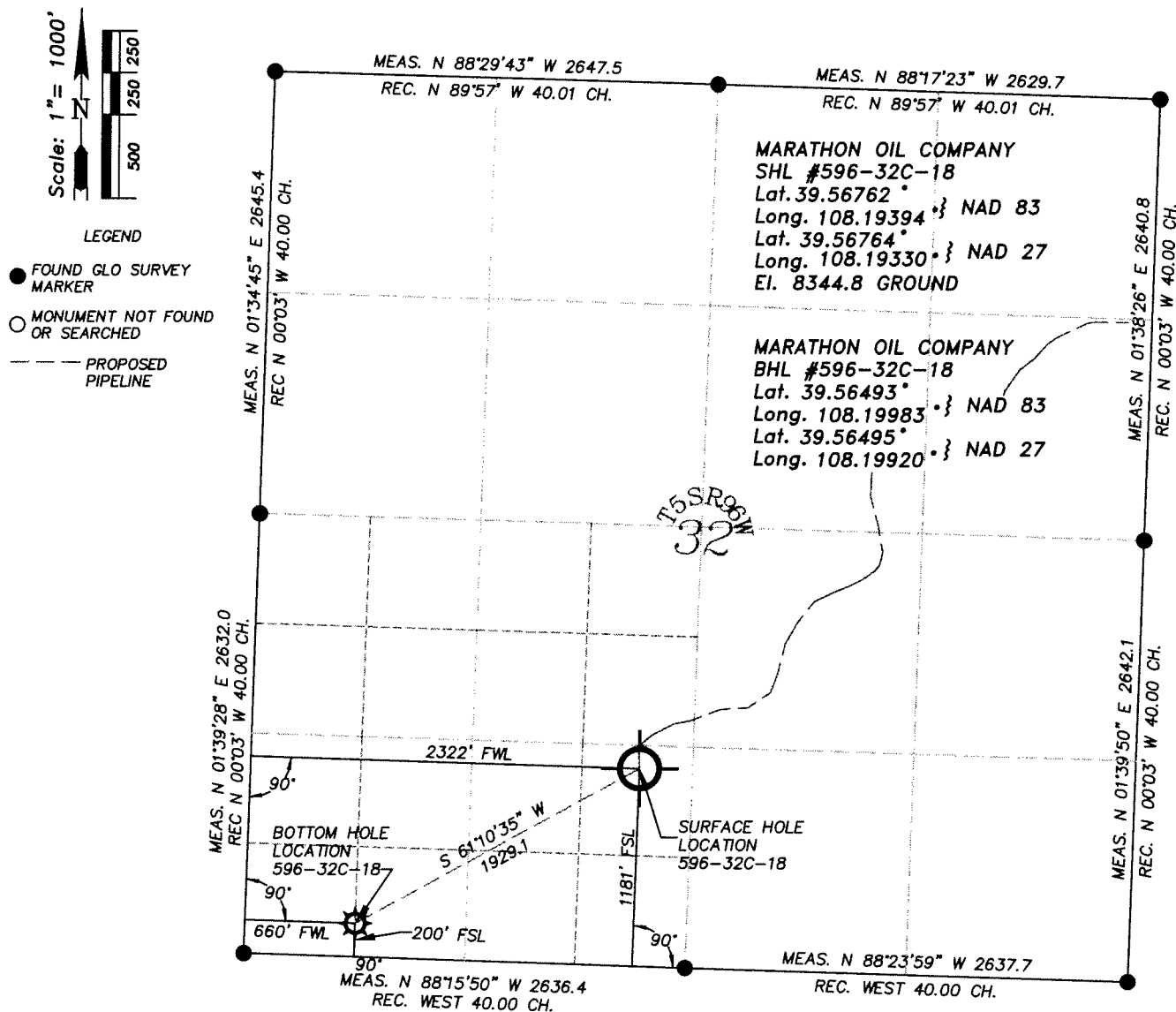
WILLIAM H. SMITH & ASSOCIATES P.C. SURVEYING CONSULTANTS

P.O. BOX 820
GREEN RIVER, WYOMING 82935

T 5 S R 96 W

550 EAST 2ND NORTH
PH. 307-875-3638
FAX. 307-875-3640

PLAT FOR SURFACE AND BOTTOM HOLE LOCATION

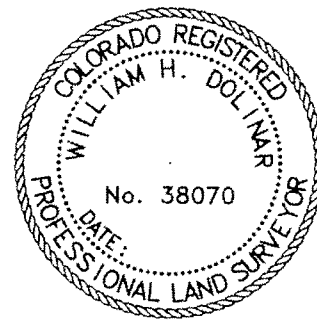


I, William H. Dolinar of Green River, Wyoming hereby certify that in accordance with a request from Frank Krugh for Marathon Oil Company, 5555 San Felipe, Houston, TX 77056. I and or personnel under my direction made a survey on the 30th day of June 2008, for the Surface Hole Location and Elevation of Marathon Oil Company, Well #596-32C-18 being located within the NE/4SE/4SW/4 of Section 32, and the Bottom Hole Location being located within the S/2SW/4SW/4 of Section 32, T 5 S, R 96 W, of the 6th Principal Meridian, Garfield County, State of Colorado, as shown on the above Section Map. Surface Hole Elevation of ungraded ground = 8344.8 feet.
Note: Basis of bearings are grid bearings based from GPS observations.
Horizontal Datum based on Colorado State Plane Coordinate System Central Zone NAD 83.
Vertical Datum based on NAVD 88 NGS Triangulation Station SHALE.
NOTE: Record bearings as shown are based on the General Land Office survey, as approved on April 10, 1919.

LEICA GPS GDOP OF 1.9 ON 06/30/2008
IMPROVEMENTS: NONE
SURFACE USE: GRAZING: SCRUB OAK
AND NATURAL GROUND

JOB NO. 26099
07/01/2008 CED
PAD 596-32C/PAD596-32C PLATS.dwg

596-32C-18
SHEET 1 of 1



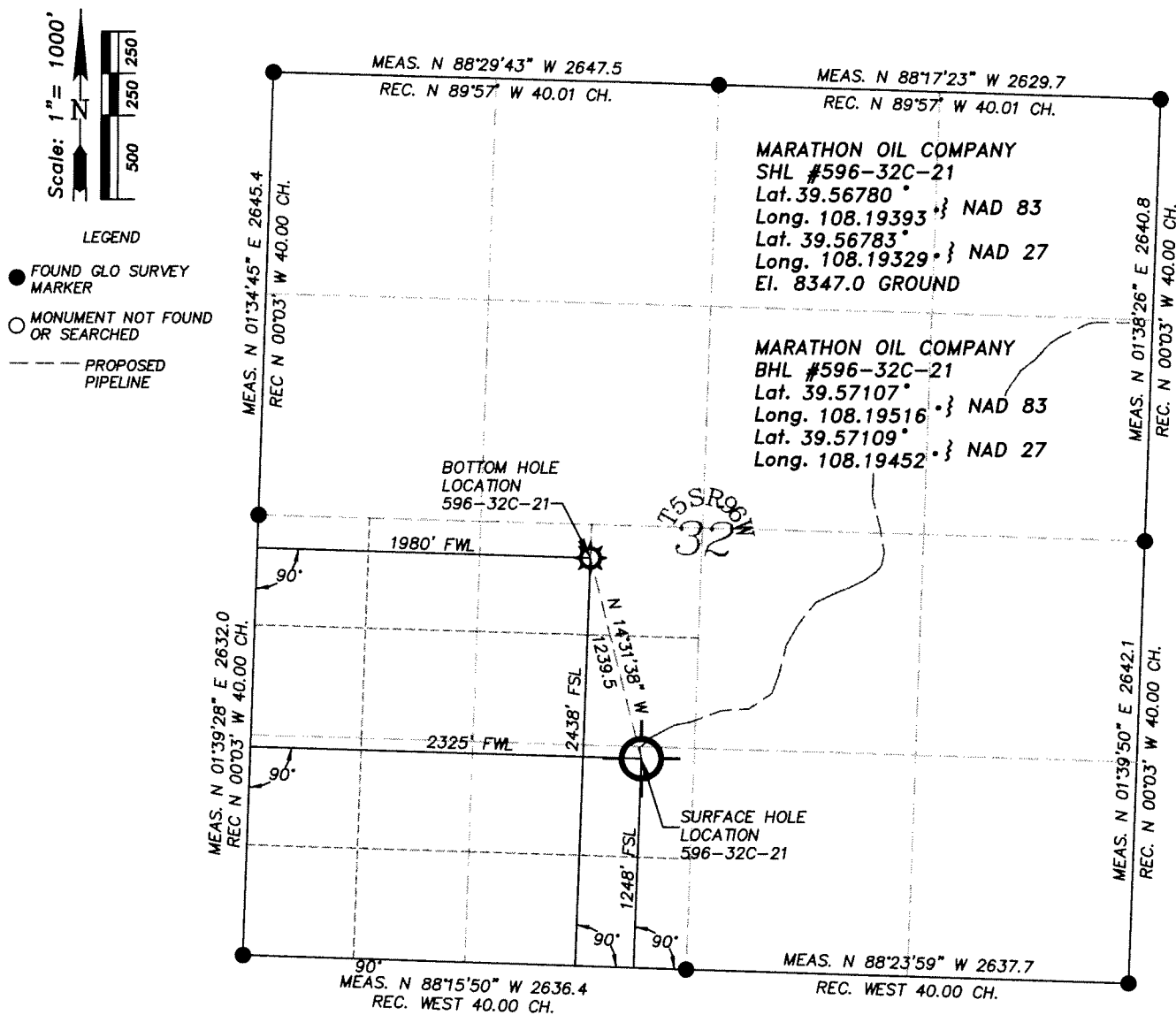
WILLIAM H. SMITH & ASSOCIATES P.C. SURVEYING CONSULTANTS

P.O. BOX 820
GREEN RIVER, WYOMING 82935

T 5 S R 96 W

550 EAST 2ND NORTH
PH. 307-875-3638
FAX. 307-875-3640

PLAT FOR SURFACE AND BOTTOM HOLE LOCATION



I, William H. Dolinar of Green River, Wyoming hereby certify that in accordance with a request from Frank Krugh for Marathon Oil Company, 5555 San Felipe, Houston, TX 77056. I and or personnel under my direction made a survey on the 30th day of June 2008, for the Surface Hole Location and Elevation of Marathon Oil Company, Well #596-32C-21 being located within the NE/4SE/4SW/4 of Section 32, and the Bottom Hole Location being located within the N/2NE/4SW/4 of Section 32, T 5 S, R 96 W, of the 6th Principal Meridian, Garfield County, State of Colorado, as shown on the above Section Map. Surface Hole Elevation of ungraded ground = 8347.0 feet.

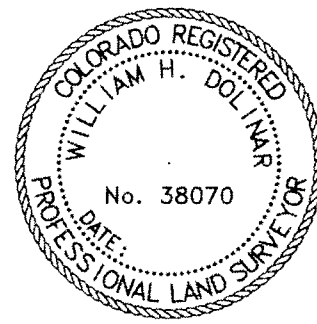
Note: Basis of bearings are grid bearings based from GPS observations. Horizontal Datum based on Colorado State Plane Coordinate System Central Zone NAD 83. Vertical Datum based on NAVD 88 NGS Triangulation Station SHALE.

NOTE: Record bearings as shown are based on the General Land Office survey, as approved on April 10, 1919.

LEICA GPS GDOP OF 2.9 ON 06/30/2008
IMPROVEMENTS: NONE
SURFACE USE: GRAZING: SCRUB OAK
AND NATURAL GROUND

JOB NO. 26099
07/01/2008 CED
PAD 596-32C/PAD596-32C PLATS.dwg

596-32C-21
SHEET 1 of 1



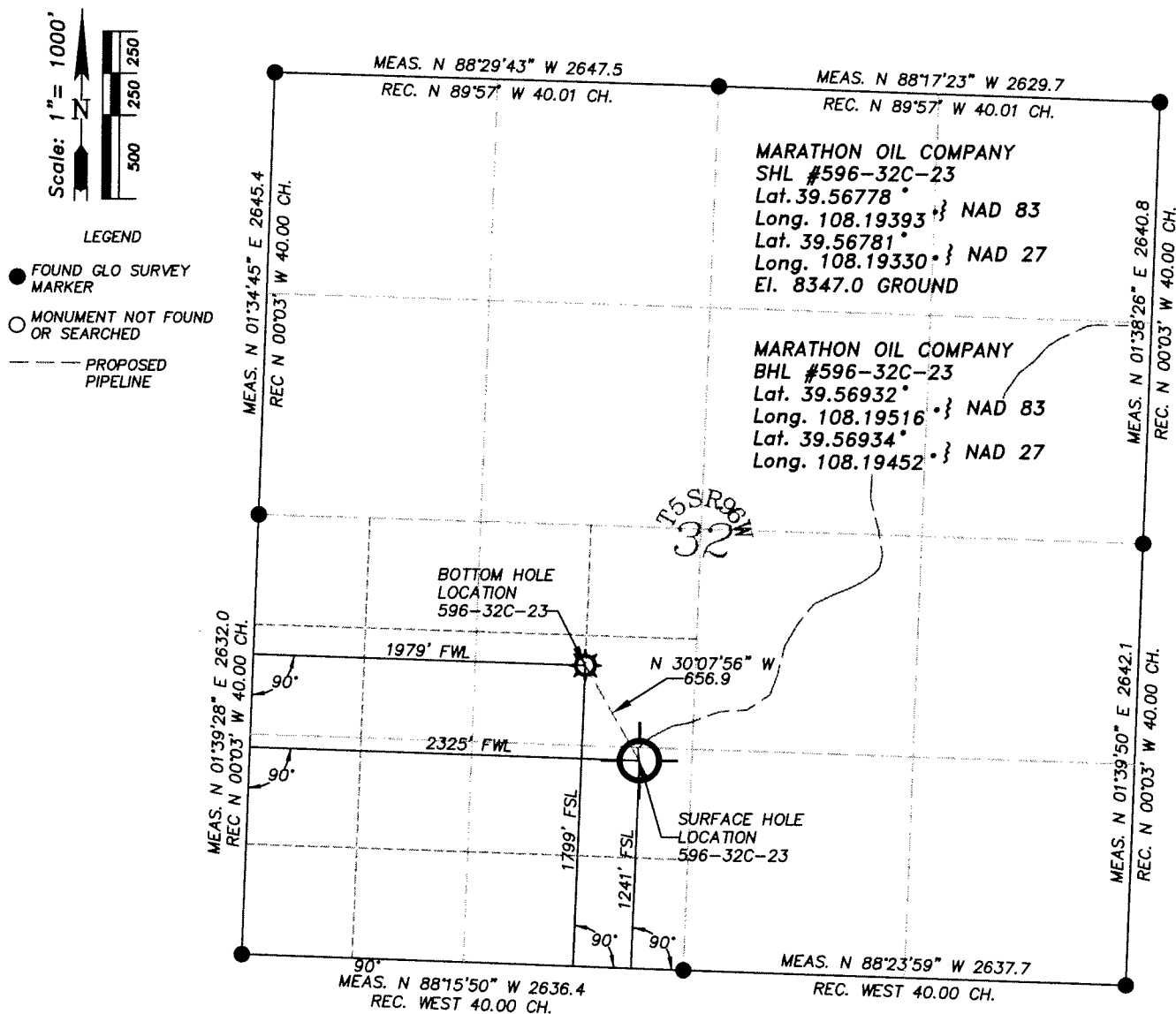
WILLIAM H. SMITH & ASSOCIATES P.C. SURVEYING CONSULTANTS

P.O. BOX 820
GREEN RIVER, WYOMING 82935

T 5 S R 96 W

550 EAST 2ND NORTH
PH. 307-875-3638
FAX. 307-875-3640

PLAT FOR SURFACE AND BOTTOM HOLE LOCATION



I, William H. Dolinar of Green River, Wyoming hereby certify that in accordance with a request from Frank Krugh for Marathon Oil Company, 5555 San Felipe, Houston, TX 77056. I and or personnel under my direction made a survey on the 30th day of June 2008, for the Surface Hole Location and Elevation of Marathon Oil Company, Well #596-32C-23 being located within the NE/4SE/4SW/4 of Section 32, and the Bottom Hole Location being located within the S/2NE/4SW/4 of Section 32, T 5 S, R 96 W, of the 6th Principal Meridian, Garfield County, State of Colorado, as shown on the above Section Map. Surface Hole Elevation of ungraded ground = 8347.0 feet.

Note: Basis of bearings are grid bearings based from GPS observations.
Horizontal Datum based on Colorado State Plane Coordinate System Central Zone NAD 83.
Vertical Datum based on NAVD 88 NGS Triangulation Station SHALE.

NOTE: Record bearings as shown are based on the General Land Office survey, as approved on April 10, 1919.

LEICA GPS GDOP OF 2.6 ON 06/30/2008
IMPROVEMENTS: NONE
SURFACE USE: GRAZING: SCRUB OAK
AND NATURAL GROUND

JOB NO. 26099
07/01/2008 CED
PAD 596-32C/PAD596-32C PLATS.dwg

596-32C-23
SHEET 1 of 1



P.O. BOX 820
GREEN RIVER, WYOMING 82935

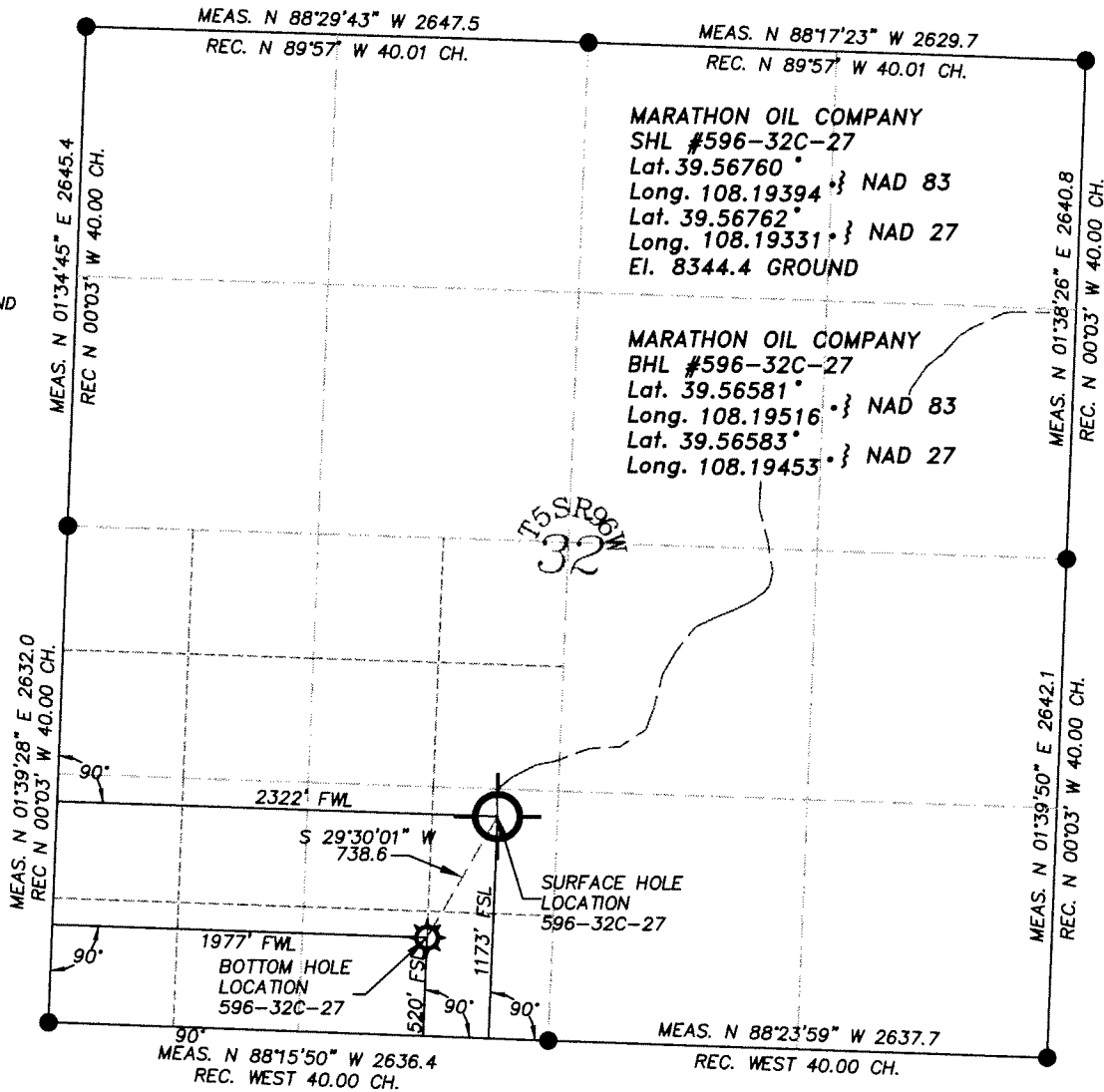
550 EAST 2ND NORTH
PH. 307-875-3638
FAX. 307-875-3640

Scale: 1" = 1000'

● FOUND GLO SURVEY
MARKER

○ MONUMENT NOT FOUND
OR SEARCHED

— — — PROPOSED
PIPELINE



NOTE: Record bearings as shown are based on the General Land Office survey, as approved on April 10, 1919.

JOB NO. 26099
07/01/2008 CED
PAD 596-32C/PAD596-32C PLATS.dwg

~SEAL~