

T1S, R99W, 6th P.M.

1938 Brass Cap
0.5' High, Steel
Post, Pile of Stones
Lat: 39.941597
Long: 108.462581

MESA ENERGY PARTNERS, LLC

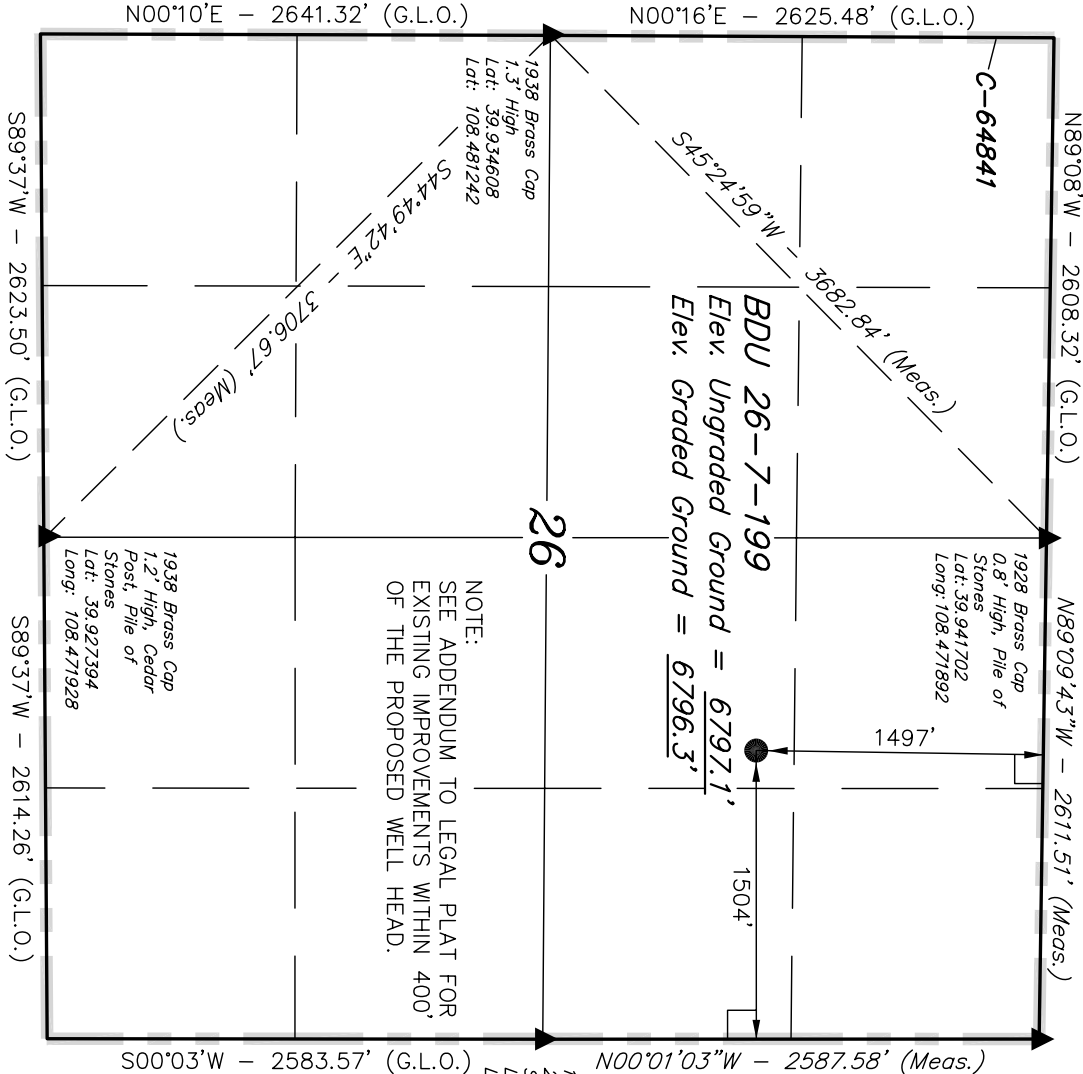
Well location, BDU 26-7-199, located as shown in the SW 1/4 NE 1/4 of Section 26, T1S, R99W, 6th P.M., Rio Blanco County, Colorado.

BASIS OF ELEVATION

SPOT ELEVATION AT THE NORTHEAST CORNER OF SECTION 10, T1S, R99W, 6th P.M. TAKEN FROM THE WOLF RIDGE QUADRANGLE, COLORADO, RIO BLANCO COUNTY, 7.5 MINUTE SERIES (TOPOGRAPHICAL MAP) PUBLISHED BY THE UNITED STATES DEPARTMENT OF THE INTERIOR, GEOLOGICAL SURVEY. SAID ELEVATION IS MARKED AS BEING 6663 FEET.

BASIS OF BEARINGS

BASIS OF BEARINGS IS A G.P.S. OBSERVATION.



NOTE:
SEE ADDENDUM TO LEGAL PLAT FOR
EXISTING IMPROVEMENTS WITHIN 400'
OF THE PROPOSED WELL HEAD.

CERTIFICATE

THIS IS TO CERTIFY THAT THE ABOVE PLAT WAS PREPARED FROM FIELD NOTES OF ACTUAL SURVEYS MADE BY ME, OR UNDER MY SUPERVISION AND THAT THE SAME ARE TRUE AND CORRECT TO THE BEST OF MY KNOWLEDGE AND BELIEF.

REVISED: 12-19-20 D.R.B.
REVISED: 06-03-09
REVISED: 04-09-09
REVISED: 03-26-09

REGISTERED LAND SURVEYOR
REGISTRATION NO. 17492
STATE OF COLORADO

UINTAH ENGINEERING & LAND SURVEYING

86 SOUTH 200 EAST - VERNAL, UTAH 84078

(435) 789-1017

LEGEND:

— = 90° SYMBOL

● = PROPOSED WELL HEAD.

▲ = SECTION CORNERS LOCATED.

PDOP = 1.6

SCALE
1" = 1000'

DATE SURVEYED: 03-12-09

DATE DRAWN: 03-13-09

PARTY

B.H. B.B. C.H.

REFERENCES

G.L.O. PLAT

WEATHER

COOL

FILE

MESA ENERGY PARTNERS, LLC