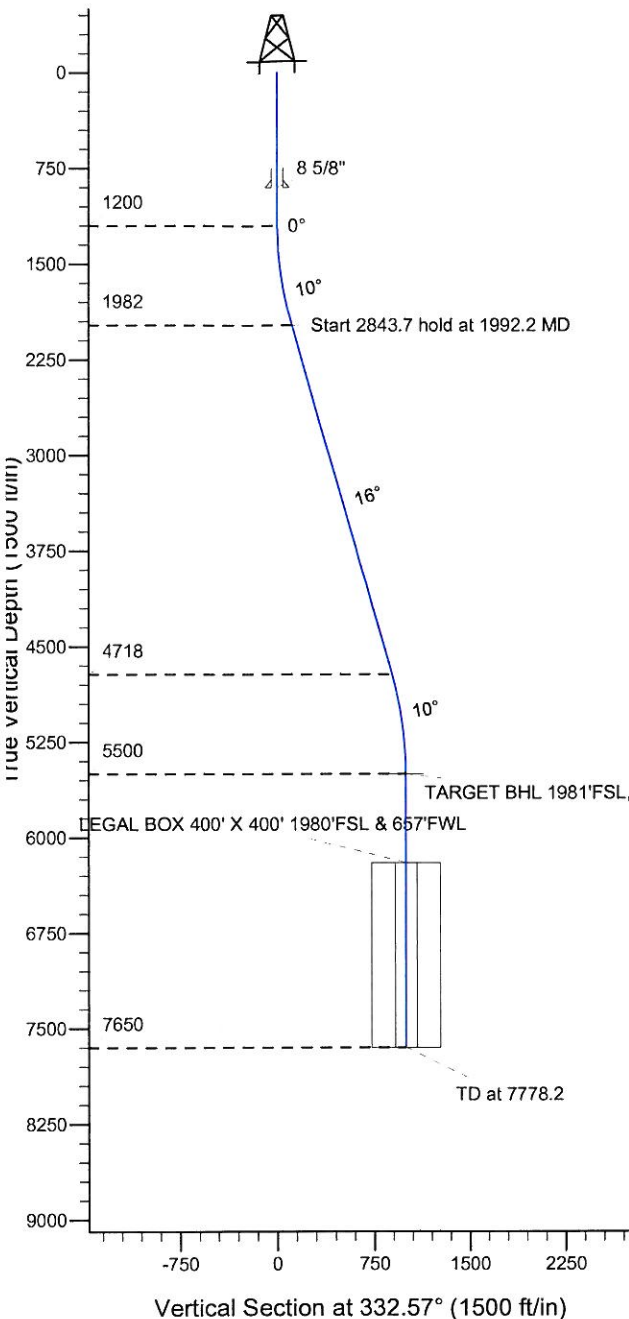
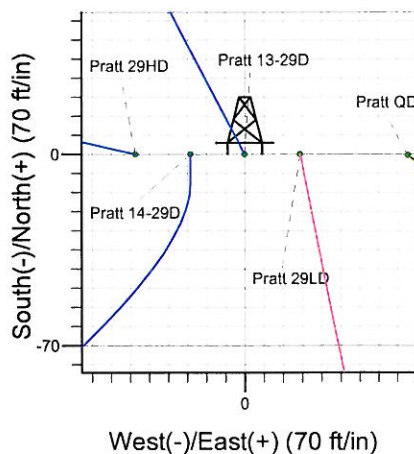
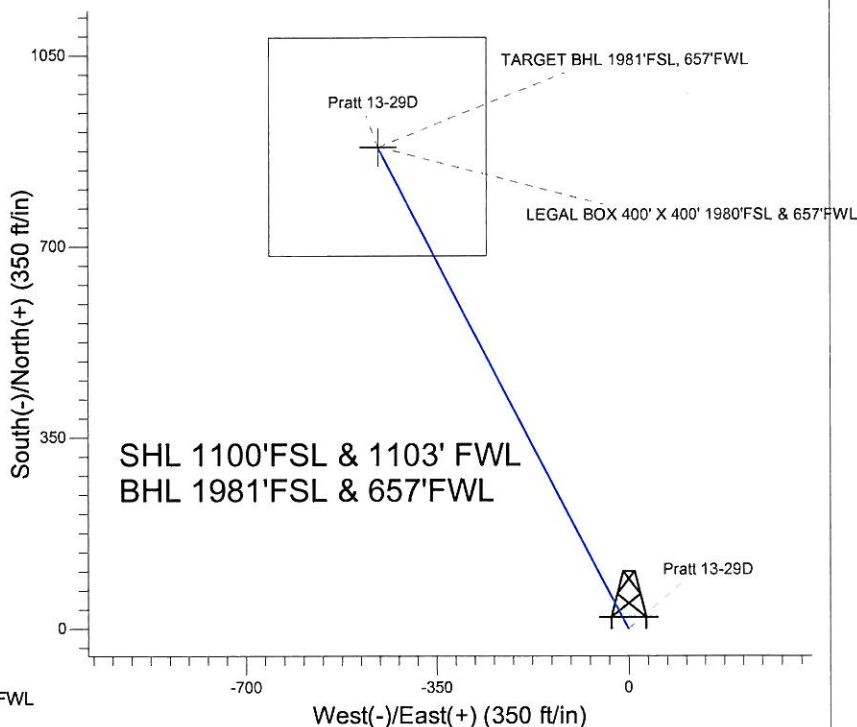


Surface Location: Pratt 24-29D Pad Sec.29-T1N-R68W  
 North American Datum 1983 , US State Plane 1983 , Colorado Northern Zone  
 Ground Elevation: 5142.0  
 +N/-S+E/-W Northing Easting Latitude Longitude Slot  
 0.0 0.0 1249667.74 3130809.62 40° 1' 4.004 N 105° 1' 58.638 W  
 Original Well Elev WELL @ 5155.0ft (Original Well Elev)



## Synergy Resources



Pratt 13-29D  
 Plan #1 (12-28-10)  
 18:08, December 30 2010

Azimuths to True North  
 Magnetic North: 9.03°  
 Magnetic Field  
 Strength: 52946.4snT  
 Dip Angle: 66.71°  
 Date: 12/28/2010  
 Model: IGRF2010

### WELLBORE TARGET DETAILS (LAT/LONG)

Name	TVD	+N/-S	+E/-W	Latitude	Longitude	Shape Point
TARGET BHL 1981'FSL, 657'FWL	5500.0	882.3	-457.9	40° 1' 12.724 N	105° 2' 4.524 W	Rectangle (Sides: L400.0 W400.0)
LEGAL BOX 400' X 400' 1980'FSL & 657'FWL	6200.0	883.3	-457.9	40° 1' 12.733 N	105° 2' 4.524 W	

### SECTION DETAILS

Sec	MD	Inc	Azi	TVD	+N/-S	+E/-W	DLeg	TFace	VSec	Target
1	0.0	0.00	0.00	0.0	0.0	0.0	0.00	0.00	0.0	
2	1200.0	0.00	0.00	1200.0	0.0	0.0	0.00	0.00	0.0	
3	1992.2	15.84	332.57	1982.1	96.6	-50.1	2.00	332.57	108.8	
4	4836.0	15.84	332.57	4717.9	785.7	-407.8	0.00	0.00	885.2	
5	5628.2	0.00	0.00	5500.0	882.3	-457.9	2.00	180.00	994.1	TARGET BHL 1981'FSL, 657'FWL
6	7778.2	0.00	0.00	7650.0	882.3	-457.9	0.00	0.00	994.1	



## **Directional**

### **Synergy Resources**

**SEC.29-T1N-R68W**

**Pratt 24-29D Pad Sec.29-T1N-R68W**

**Pratt 13-29D**

**Wellbore #1**

**Plan: Plan #1 (12-28-10)**

## **Standard Planning Report**

**30 December, 2010**

<b>Database:</b>	Landmark	<b>Local Co-ordinate Reference:</b>	Well Pratt 13-29D
<b>Company:</b>	Synergy Resources	<b>TVD Reference:</b>	WELL @ 5155.0ft (Original Well Elev)
<b>Project:</b>	SEC.29-T1N-R68W	<b>MD Reference:</b>	WELL @ 5155.0ft (Original Well Elev)
<b>Site:</b>	Pratt 24-29D Pad Sec.29-T1N-R68W	<b>North Reference:</b>	True
<b>Well:</b>	Pratt 13-29D	<b>Survey Calculation Method:</b>	Minimum Curvature
<b>Wellbore:</b>	Wellbore #1		
<b>Design:</b>	Plan #1 (12-28-10)		

<b>Project</b>	SEC.29-T1N-R68W, Weld County, Colorado		
<b>Map System:</b>	US State Plane 1983	<b>System Datum:</b>	Mean Sea Level
<b>Geo Datum:</b>	North American Datum 1983		
<b>Map Zone:</b>	Colorado Northern Zone		Using geodetic scale factor

Site		Pratt 24-29D Pad Sec.29-T1N-R68W			
Site Position:		Northing:	1,249,668.17 ft	Latitude:	40° 1' 4.004 N
From:	Lat/Long	Easting:	3,130,889.72 ft	Longitude:	105° 1' 57.608 W
Position Uncertainty:	0.0 ft	Slot Radius:	"	Grid Convergence:	0.30 °

Well	Pratt 13-29D					
Well Position	+N/-S	0.0 ft	Northing:	1,249,667.74 ft	Latitude:	40° 1' 4.004 N
	+E/-W	-80.1 ft	Easting:	3,130,809.62 ft	Longitude:	105° 1' 58.638 W
Position Uncertainty		0.0 ft	Wellhead Elevation:	ft	Ground Level:	5,142.0 ft

<b>Wellbore</b>	Wellbore #1
-----------------	-------------

Magnetics	Model Name	Sample Date	Declination (°)	Dip Angle (°)	Field Strength (nT)
	IGRF2010	12/28/2010	9.03	66.71	52,946

<b>Design</b>	Plan #1 (12-28-10)			
<b>Audit Notes:</b>				
<b>Version:</b>	<b>Phase:</b>	PROTOTYPE	<b>Tie On Depth:</b>	0.0
<b>Vertical Section:</b>	<b>Depth From (TVD) (ft)</b>	<b>+N/-S (ft)</b>	<b>+E/-W (ft)</b>	<b>Direction (°)</b>
	0.0	0.0	0.0	332.57

Plan Sections										
Measured Depth (ft)	Inclination (°)	Azimuth (°)	Vertical Depth (ft)	+N/-S (ft)	+E/-W (ft)	Dogleg Rate (°/100ft)	Build Rate (°/100ft)	Turn Rate (°/100ft)	TFO (°)	Target
0.0	0.00	0.00	0.0	0.0	0.0	0.00	0.00	0.00	0.00	
1,200.0	0.00	0.00	1,200.0	0.0	0.0	0.00	0.00	0.00	0.00	
1,992.2	15.84	332.57	1,982.1	96.6	-50.1	2.00	2.00	0.00	332.57	
4,836.0	15.84	332.57	4,717.9	785.7	-407.8	0.00	0.00	0.00	0.00	
5,628.2	0.00	0.00	5,500.0	882.3	-457.9	2.00	-2.00	0.00	180.00	TARGET BHL 1981
7,778.2	0.00	0.00	7,650.0	882.3	-457.9	0.00	0.00	0.00	0.00	



<b>Database:</b>	Landmark	<b>Local Co-ordinate Reference:</b>	Well Pratt 13-29D
<b>Company:</b>	Synergy Resources	<b>TVD Reference:</b>	WELL @ 5155.0ft (Original Well Elev)
<b>Project:</b>	SEC.29-T1N-R68W	<b>MD Reference:</b>	WELL @ 5155.0ft (Original Well Elev)
<b>Site:</b>	Pratt 24-29D Pad Sec.29-T1N-R68W	<b>North Reference:</b>	True
<b>Well:</b>	Pratt 13-29D	<b>Survey Calculation Method:</b>	Minimum Curvature
<b>Wellbore:</b>	Wellbore #1		
<b>Design:</b>	Plan #1 (12-28-10)		

### Planned Survey

Measured Depth (ft)	Inclination (°)	Azimuth (°)	Vertical Depth (ft)	+N/-S (ft)	+E/-W (ft)	Vertical Section (ft)	Dogleg Rate (°/100ft)	Build Rate (°/100ft)	Turn Rate (°/100ft)
0.0	0.00	0.00	0.0	0.0	0.0	0.0	0.00	0.00	0.00
50.0	0.00	0.00	50.0	0.0	0.0	0.0	0.00	0.00	0.00
100.0	0.00	0.00	100.0	0.0	0.0	0.0	0.00	0.00	0.00
150.0	0.00	0.00	150.0	0.0	0.0	0.0	0.00	0.00	0.00
200.0	0.00	0.00	200.0	0.0	0.0	0.0	0.00	0.00	0.00
250.0	0.00	0.00	250.0	0.0	0.0	0.0	0.00	0.00	0.00
300.0	0.00	0.00	300.0	0.0	0.0	0.0	0.00	0.00	0.00
350.0	0.00	0.00	350.0	0.0	0.0	0.0	0.00	0.00	0.00
400.0	0.00	0.00	400.0	0.0	0.0	0.0	0.00	0.00	0.00
450.0	0.00	0.00	450.0	0.0	0.0	0.0	0.00	0.00	0.00
500.0	0.00	0.00	500.0	0.0	0.0	0.0	0.00	0.00	0.00
550.0	0.00	0.00	550.0	0.0	0.0	0.0	0.00	0.00	0.00
600.0	0.00	0.00	600.0	0.0	0.0	0.0	0.00	0.00	0.00
650.0	0.00	0.00	650.0	0.0	0.0	0.0	0.00	0.00	0.00
700.0	0.00	0.00	700.0	0.0	0.0	0.0	0.00	0.00	0.00
750.0	0.00	0.00	750.0	0.0	0.0	0.0	0.00	0.00	0.00
800.0	0.00	0.00	800.0	0.0	0.0	0.0	0.00	0.00	0.00
850.0	0.00	0.00	850.0	0.0	0.0	0.0	0.00	0.00	0.00
900.0	0.00	0.00	900.0	0.0	0.0	0.0	0.00	0.00	0.00
8 5/8"									
950.0	0.00	0.00	950.0	0.0	0.0	0.0	0.00	0.00	0.00
1,000.0	0.00	0.00	1,000.0	0.0	0.0	0.0	0.00	0.00	0.00
1,050.0	0.00	0.00	1,050.0	0.0	0.0	0.0	0.00	0.00	0.00
1,100.0	0.00	0.00	1,100.0	0.0	0.0	0.0	0.00	0.00	0.00
1,150.0	0.00	0.00	1,150.0	0.0	0.0	0.0	0.00	0.00	0.00
1,200.0	0.00	0.00	1,200.0	0.0	0.0	0.0	0.00	0.00	0.00
1,250.0	1.00	332.57	1,250.0	0.4	-0.2	0.4	2.00	2.00	0.00
1,300.0	2.00	332.57	1,300.0	1.5	-0.8	1.7	2.00	2.00	0.00
1,350.0	3.00	332.57	1,349.9	3.5	-1.8	3.9	2.00	2.00	0.00
1,400.0	4.00	332.57	1,399.8	6.2	-3.2	7.0	2.00	2.00	0.00
1,450.0	5.00	332.57	1,449.7	9.7	-5.0	10.9	2.00	2.00	0.00
1,500.0	6.00	332.57	1,499.5	13.9	-7.2	15.7	2.00	2.00	0.00
1,550.0	7.00	332.57	1,549.1	19.0	-9.8	21.4	2.00	2.00	0.00
1,600.0	8.00	332.57	1,598.7	24.7	-12.8	27.9	2.00	2.00	0.00
1,650.0	9.00	332.57	1,648.2	31.3	-16.2	35.3	2.00	2.00	0.00
1,700.0	10.00	332.57	1,697.5	38.6	-20.0	43.5	2.00	2.00	0.00
1,750.0	11.00	332.57	1,746.6	46.7	-24.2	52.6	2.00	2.00	0.00
1,800.0	12.00	332.57	1,795.6	55.6	-28.8	62.6	2.00	2.00	0.00
1,850.0	13.00	332.57	1,844.4	65.2	-33.8	73.4	2.00	2.00	0.00
1,900.0	14.00	332.57	1,893.1	75.5	-39.2	85.1	2.00	2.00	0.00
1,950.0	15.00	332.57	1,941.5	86.6	-45.0	97.6	2.00	2.00	0.00
1,992.2	15.84	332.57	1,982.1	96.6	-50.1	108.8	2.00	2.00	0.00
2,000.0	15.84	332.57	1,989.6	98.5	-51.1	111.0	0.00	0.00	0.00
2,050.0	15.84	332.57	2,037.7	110.6	-57.4	124.6	0.00	0.00	0.00
2,100.0	15.84	332.57	2,085.8	122.7	-63.7	138.3	0.00	0.00	0.00
2,150.0	15.84	332.57	2,133.9	134.8	-70.0	151.9	0.00	0.00	0.00
2,200.0	15.84	332.57	2,182.0	147.0	-76.3	165.6	0.00	0.00	0.00
2,250.0	15.84	332.57	2,230.1	159.1	-82.6	179.2	0.00	0.00	0.00
2,300.0	15.84	332.57	2,278.2	171.2	-88.8	192.9	0.00	0.00	0.00
2,350.0	15.84	332.57	2,326.3	183.3	-95.1	206.5	0.00	0.00	0.00
2,400.0	15.84	332.57	2,374.4	195.4	-101.4	220.2	0.00	0.00	0.00
2,450.0	15.84	332.57	2,422.5	207.5	-107.7	233.8	0.00	0.00	0.00
2,500.0	15.84	332.57	2,470.6	219.7	-114.0	247.5	0.00	0.00	0.00
2,550.0	15.84	332.57	2,518.8	231.8	-120.3	261.1	0.00	0.00	0.00

<b>Database:</b>	Landmark	<b>Local Co-ordinate Reference:</b>	Well Pratt 13-29D
<b>Company:</b>	Synergy Resources	<b>TVD Reference:</b>	WELL @ 5155.0ft (Original Well Elev)
<b>Project:</b>	SEC.29-T1N-R68W	<b>MD Reference:</b>	WELL @ 5155.0ft (Original Well Elev)
<b>Site:</b>	Pratt 24-29D Pad Sec.29-T1N-R68W	<b>North Reference:</b>	True
<b>Well:</b>	Pratt 13-29D	<b>Survey Calculation Method:</b>	Minimum Curvature
<b>Wellbore:</b>	Wellbore #1		
<b>Design:</b>	Plan #1 (12-28-10)		

### Planned Survey

Measured Depth (ft)	Inclination (°)	Azimuth (°)	Vertical Depth (ft)	+N/-S (ft)	+E/-W (ft)	Vertical Section (ft)	Dogleg Rate (°/100ft)	Build Rate (°/100ft)	Turn Rate (°/100ft)
2,600.0	15.84	332.57	2,566.9	243.9	-126.6	274.8	0.00	0.00	0.00
2,650.0	15.84	332.57	2,615.0	256.0	-132.9	288.4	0.00	0.00	0.00
2,700.0	15.84	332.57	2,663.1	268.1	-139.2	302.1	0.00	0.00	0.00
2,750.0	15.84	332.57	2,711.2	280.2	-145.4	315.7	0.00	0.00	0.00
2,800.0	15.84	332.57	2,759.3	292.4	-151.7	329.4	0.00	0.00	0.00
2,850.0	15.84	332.57	2,807.4	304.5	-158.0	343.0	0.00	0.00	0.00
2,900.0	15.84	332.57	2,855.5	316.6	-164.3	356.7	0.00	0.00	0.00
2,950.0	15.84	332.57	2,903.6	328.7	-170.6	370.3	0.00	0.00	0.00
3,000.0	15.84	332.57	2,951.7	340.8	-176.9	384.0	0.00	0.00	0.00
3,050.0	15.84	332.57	2,999.8	352.9	-183.2	397.6	0.00	0.00	0.00
3,100.0	15.84	332.57	3,047.9	365.0	-189.5	411.3	0.00	0.00	0.00
3,150.0	15.84	332.57	3,096.0	377.2	-195.8	424.9	0.00	0.00	0.00
3,200.0	15.84	332.57	3,144.1	389.3	-202.0	438.6	0.00	0.00	0.00
3,250.0	15.84	332.57	3,192.2	401.4	-208.3	452.2	0.00	0.00	0.00
3,300.0	15.84	332.57	3,240.3	413.5	-214.6	465.9	0.00	0.00	0.00
3,350.0	15.84	332.57	3,288.4	425.6	-220.9	479.5	0.00	0.00	0.00
3,400.0	15.84	332.57	3,336.5	437.7	-227.2	493.2	0.00	0.00	0.00
3,450.0	15.84	332.57	3,384.6	449.9	-233.5	506.8	0.00	0.00	0.00
3,500.0	15.84	332.57	3,432.7	462.0	-239.8	520.5	0.00	0.00	0.00
3,550.0	15.84	332.57	3,480.8	474.1	-246.1	534.1	0.00	0.00	0.00
3,600.0	15.84	332.57	3,528.9	486.2	-252.3	547.8	0.00	0.00	0.00
3,650.0	15.84	332.57	3,577.0	498.3	-258.6	561.4	0.00	0.00	0.00
3,700.0	15.84	332.57	3,625.1	510.4	-264.9	575.1	0.00	0.00	0.00
3,750.0	15.84	332.57	3,673.2	522.6	-271.2	588.8	0.00	0.00	0.00
3,800.0	15.84	332.57	3,721.3	534.7	-277.5	602.4	0.00	0.00	0.00
3,850.0	15.84	332.57	3,769.4	546.8	-283.8	616.1	0.00	0.00	0.00
3,900.0	15.84	332.57	3,817.5	558.9	-290.1	629.7	0.00	0.00	0.00
3,950.0	15.84	332.57	3,865.6	571.0	-296.4	643.4	0.00	0.00	0.00
4,000.0	15.84	332.57	3,913.7	583.1	-302.7	657.0	0.00	0.00	0.00
4,050.0	15.84	332.57	3,961.8	595.3	-308.9	670.7	0.00	0.00	0.00
4,100.0	15.84	332.57	4,009.9	607.4	-315.2	684.3	0.00	0.00	0.00
4,150.0	15.84	332.57	4,058.0	619.5	-321.5	698.0	0.00	0.00	0.00
4,200.0	15.84	332.57	4,106.1	631.6	-327.8	711.6	0.00	0.00	0.00
4,250.0	15.84	332.57	4,154.2	643.7	-334.1	725.3	0.00	0.00	0.00
4,300.0	15.84	332.57	4,202.3	655.8	-340.4	738.9	0.00	0.00	0.00
4,350.0	15.84	332.57	4,250.4	668.0	-346.7	752.6	0.00	0.00	0.00
4,400.0	15.84	332.57	4,298.5	680.1	-353.0	766.2	0.00	0.00	0.00
4,450.0	15.84	332.57	4,346.6	692.2	-359.3	779.9	0.00	0.00	0.00
4,500.0	15.84	332.57	4,394.7	704.3	-365.5	793.5	0.00	0.00	0.00
4,550.0	15.84	332.57	4,442.8	716.4	-371.8	807.2	0.00	0.00	0.00
4,600.0	15.84	332.57	4,490.9	728.5	-378.1	820.8	0.00	0.00	0.00
4,650.0	15.84	332.57	4,539.0	740.7	-384.4	834.5	0.00	0.00	0.00
4,700.0	15.84	332.57	4,587.1	752.8	-390.7	848.1	0.00	0.00	0.00
4,750.0	15.84	332.57	4,635.2	764.9	-397.0	861.8	0.00	0.00	0.00
4,800.0	15.84	332.57	4,683.3	777.0	-403.3	875.4	0.00	0.00	0.00
4,836.0	15.84	332.57	4,717.9	785.7	-407.8	885.2	0.00	0.00	0.00
4,850.0	15.56	332.57	4,731.4	789.1	-409.5	889.0	2.00	-2.00	0.00
4,900.0	14.56	332.57	4,779.7	800.6	-415.5	902.0	2.00	-2.00	0.00
4,950.0	13.56	332.57	4,828.2	811.4	-421.1	914.2	2.00	-2.00	0.00
5,000.0	12.56	332.57	4,876.9	821.4	-426.3	925.5	2.00	-2.00	0.00
5,050.0	11.56	332.57	4,925.8	830.7	-431.1	935.9	2.00	-2.00	0.00
5,100.0	10.56	332.57	4,974.8	839.2	-435.6	945.5	2.00	-2.00	0.00
5,150.0	9.56	332.57	5,024.1	847.0	-439.6	954.3	2.00	-2.00	0.00
5,200.0	8.56	332.57	5,073.4	854.0	-443.2	962.1	2.00	-2.00	0.00



<b>Database:</b>	Landmark	<b>Local Co-ordinate Reference:</b>	Well Pratt 13-29D
<b>Company:</b>	Synergy Resources	<b>TVD Reference:</b>	WELL @ 5155.0ft (Original Well Elev)
<b>Project:</b>	SEC.29-T1N-R68W	<b>MD Reference:</b>	WELL @ 5155.0ft (Original Well Elev)
<b>Site:</b>	Pratt 24-29D Pad Sec.29-T1N-R68W	<b>North Reference:</b>	True
<b>Well:</b>	Pratt 13-29D	<b>Survey Calculation Method:</b>	Minimum Curvature
<b>Wellbore:</b>	Wellbore #1		
<b>Design:</b>	Plan #1 (12-28-10)		

### Planned Survey

Measured Depth (ft)	Inclination (°)	Azimuth (°)	Vertical Depth (ft)	+N/-S (ft)	+E/-W (ft)	Vertical Section (ft)	Dogleg Rate (°/100ft)	Build Rate (°/100ft)	Turn Rate (°/100ft)
5,250.0	7.56	332.57	5,122.9	860.2	-446.5	969.2	2.00	-2.00	0.00
5,300.0	6.56	332.57	5,172.6	865.7	-449.3	975.3	2.00	-2.00	0.00
5,350.0	5.56	332.57	5,222.3	870.3	-451.7	980.6	2.00	-2.00	0.00
5,400.0	4.56	332.57	5,272.1	874.3	-453.7	985.0	2.00	-2.00	0.00
5,450.0	3.56	332.57	5,322.0	877.4	-455.4	988.5	2.00	-2.00	0.00
5,500.0	2.56	332.57	5,371.9	879.8	-456.6	991.2	2.00	-2.00	0.00
5,550.0	1.56	332.57	5,421.9	881.4	-457.4	993.0	2.00	-2.00	0.00
5,600.0	0.56	332.57	5,471.8	882.2	-457.9	993.9	2.00	-2.00	0.00
5,628.2	0.00	0.00	5,500.0	882.3	-457.9	994.1	2.00	-2.00	0.00
5,650.0	0.00	0.00	5,521.8	882.3	-457.9	994.1	0.00	0.00	0.00
5,700.0	0.00	0.00	5,571.8	882.3	-457.9	994.1	0.00	0.00	0.00
5,750.0	0.00	0.00	5,621.8	882.3	-457.9	994.1	0.00	0.00	0.00
5,800.0	0.00	0.00	5,671.8	882.3	-457.9	994.1	0.00	0.00	0.00
5,850.0	0.00	0.00	5,721.8	882.3	-457.9	994.1	0.00	0.00	0.00
5,900.0	0.00	0.00	5,771.8	882.3	-457.9	994.1	0.00	0.00	0.00
5,950.0	0.00	0.00	5,821.8	882.3	-457.9	994.1	0.00	0.00	0.00
6,000.0	0.00	0.00	5,871.8	882.3	-457.9	994.1	0.00	0.00	0.00
6,050.0	0.00	0.00	5,921.8	882.3	-457.9	994.1	0.00	0.00	0.00
6,100.0	0.00	0.00	5,971.8	882.3	-457.9	994.1	0.00	0.00	0.00
6,150.0	0.00	0.00	6,021.8	882.3	-457.9	994.1	0.00	0.00	0.00
6,200.0	0.00	0.00	6,071.8	882.3	-457.9	994.1	0.00	0.00	0.00
6,250.0	0.00	0.00	6,121.8	882.3	-457.9	994.1	0.00	0.00	0.00
6,300.0	0.00	0.00	6,171.8	882.3	-457.9	994.1	0.00	0.00	0.00
6,350.0	0.00	0.00	6,221.8	882.3	-457.9	994.1	0.00	0.00	0.00
6,400.0	0.00	0.00	6,271.8	882.3	-457.9	994.1	0.00	0.00	0.00
6,450.0	0.00	0.00	6,321.8	882.3	-457.9	994.1	0.00	0.00	0.00
6,500.0	0.00	0.00	6,371.8	882.3	-457.9	994.1	0.00	0.00	0.00
6,550.0	0.00	0.00	6,421.8	882.3	-457.9	994.1	0.00	0.00	0.00
6,600.0	0.00	0.00	6,471.8	882.3	-457.9	994.1	0.00	0.00	0.00
6,650.0	0.00	0.00	6,521.8	882.3	-457.9	994.1	0.00	0.00	0.00
6,700.0	0.00	0.00	6,571.8	882.3	-457.9	994.1	0.00	0.00	0.00
6,750.0	0.00	0.00	6,621.8	882.3	-457.9	994.1	0.00	0.00	0.00
6,800.0	0.00	0.00	6,671.8	882.3	-457.9	994.1	0.00	0.00	0.00
6,850.0	0.00	0.00	6,721.8	882.3	-457.9	994.1	0.00	0.00	0.00
6,900.0	0.00	0.00	6,771.8	882.3	-457.9	994.1	0.00	0.00	0.00
6,950.0	0.00	0.00	6,821.8	882.3	-457.9	994.1	0.00	0.00	0.00
7,000.0	0.00	0.00	6,871.8	882.3	-457.9	994.1	0.00	0.00	0.00
7,050.0	0.00	0.00	6,921.8	882.3	-457.9	994.1	0.00	0.00	0.00
7,100.0	0.00	0.00	6,971.8	882.3	-457.9	994.1	0.00	0.00	0.00
7,150.0	0.00	0.00	7,021.8	882.3	-457.9	994.1	0.00	0.00	0.00
7,200.0	0.00	0.00	7,071.8	882.3	-457.9	994.1	0.00	0.00	0.00
7,250.0	0.00	0.00	7,121.8	882.3	-457.9	994.1	0.00	0.00	0.00
7,300.0	0.00	0.00	7,171.8	882.3	-457.9	994.1	0.00	0.00	0.00
7,350.0	0.00	0.00	7,221.8	882.3	-457.9	994.1	0.00	0.00	0.00
7,400.0	0.00	0.00	7,271.8	882.3	-457.9	994.1	0.00	0.00	0.00
7,450.0	0.00	0.00	7,321.8	882.3	-457.9	994.1	0.00	0.00	0.00
7,500.0	0.00	0.00	7,371.8	882.3	-457.9	994.1	0.00	0.00	0.00
7,550.0	0.00	0.00	7,421.8	882.3	-457.9	994.1	0.00	0.00	0.00
7,600.0	0.00	0.00	7,471.8	882.3	-457.9	994.1	0.00	0.00	0.00
7,650.0	0.00	0.00	7,521.8	882.3	-457.9	994.1	0.00	0.00	0.00
7,700.0	0.00	0.00	7,571.8	882.3	-457.9	994.1	0.00	0.00	0.00
7,750.0	0.00	0.00	7,621.8	882.3	-457.9	994.1	0.00	0.00	0.00
7,778.2	0.00	0.00	7,650.0	882.3	-457.9	994.1	0.00	0.00	0.00

<b>Database:</b>	Landmark	<b>Local Co-ordinate Reference:</b>	Well Pratt 13-29D
<b>Company:</b>	Synergy Resources	<b>TVD Reference:</b>	WELL @ 5155.0ft (Original Well Elev)
<b>Project:</b>	SEC.29-T1N-R68W	<b>MD Reference:</b>	WELL @ 5155.0ft (Original Well Elev)
<b>Site:</b>	Pratt 24-29D Pad Sec.29-T1N-R68W	<b>North Reference:</b>	True
<b>Well:</b>	Pratt 13-29D	<b>Survey Calculation Method:</b>	Minimum Curvature
<b>Wellbore:</b>	Wellbore #1		
<b>Design:</b>	Plan #1 (12-28-10)		

**Targets**

**Target Name**

- hit/miss target	Dip Angle (°)	Dip Dir. (°)	TVD (ft)	+N/-S (ft)	+E/-W (ft)	Northing (ft)	Easting (ft)	Latitude	Longitude
- Shape									
LEGAL BOX 400' X 400'	0.00	0.00	6,200.0	883.3	-457.9	1,250,548.58	3,130,347.09	40° 1' 12.733 N	105° 2' 4.524 W
- plan misses target center by 1.0ft at 6328.2ft MD (6200.0 TVD, 882.3 N, -457.9 E)									
- Rectangle (sides W400.0 H400.0 D1,450.0)									
TARGET BHL 1981'F	0.00	0.00	5,500.0	882.3	-457.9	1,250,547.60	3,130,347.06	40° 1' 12.724 N	105° 2' 4.524 W
- plan hits target center									
- Point									

**Casing Points**

Measured Depth (ft)	Vertical Depth (ft)	Name	Casing Diameter (")	Hole Diameter (")
900.0	900.0	8 5/8"	8-5/8	12-1/4



## **Directional**

### **Synergy Resources**

**SEC.29-T1N-R68W**

**Pratt 24-29D Pad Sec.29-T1N-R68W**

**Pratt 13-29D**

**Wellbore #1**

**Plan #1 (12-28-10)**

## **Anticollision Report**

**30 December, 2010**



<b>Company:</b>	Synergy Resources	<b>Local Co-ordinate Reference:</b>	Well Pratt 13-29D
<b>Project:</b>	SEC.29-T1N-R68W	<b>TVD Reference:</b>	WELL @ 5155.0ft (Original Well Elev)
<b>Reference Site:</b>	Pratt 24-29D Pad Sec.29-T1N-R68W	<b>MD Reference:</b>	WELL @ 5155.0ft (Original Well Elev)
<b>Site Error:</b>	0.0ft	<b>North Reference:</b>	True
<b>Reference Well:</b>	Pratt 13-29D	<b>Survey Calculation Method:</b>	Minimum Curvature
<b>Well Error:</b>	0.0ft	<b>Output errors are at</b>	2.00 sigma
<b>Reference Wellbore</b>	Wellbore #1	<b>Database:</b>	Landmark
<b>Reference Design:</b>	Plan #1 (12-28-10)	<b>Offset TVD Reference:</b>	Offset Datum

<b>Reference</b>	Plan #1 (12-28-10)		
<b>Filter type:</b>	NO GLOBAL FILTER: Using user defined selection & filtering criteria		
<b>Interpolation Method:</b>	MD Interval 50.0ft	<b>Error Model:</b>	ISCWSA
<b>Depth Range:</b>	0.0 to 7,778.2ft	<b>Scan Method:</b>	Closest Approach 3D
<b>Results Limited by:</b>	Maximum center-center distance of 200.0ft	<b>Error Surface:</b>	Elliptical Conic
<b>Warning Levels Evaluated at:</b>	2.00 Sigma		

<b>Survey Tool Program</b>	<b>Date</b> 12/30/2010			
<b>From (ft)</b>	<b>To (ft)</b>	<b>Survey (Wellbore)</b>	<b>Tool Name</b>	<b>Description</b>
0.0	7,778.2	Plan #1 (12-28-10) (Wellbore #1)	MWD	MWD - Standard

Summary						
Site Name	Reference Measured Depth (ft)	Offset Measured Depth (ft)	Distance Between Centres (ft)	Distance Between Ellipses (ft)	Separation Factor	Warning
<b>Offset Well - Wellbore - Design</b>						
Pratt 24-29D Pad Sec.29-T1N-R68W						
Pratt 14-29D - Wellbore #1 - Plan #2 (12-30-10)	1,000.0	999.0	19.9	15.6	4.691 CC	
Pratt 14-29D - Wellbore #1 - Plan #2 (12-30-10)	1,100.0	1,099.0	20.0	15.3	4.283 ES	
Pratt 14-29D - Wellbore #1 - Plan #2 (12-30-10)	1,200.0	1,198.7	21.1	16.0	4.161 SF	
Pratt 24-29D - Wellbore #1 - Plan #2 (12-30-10)	1,000.0	1,000.0	80.1	75.9	18.887 CC, ES	
Pratt 24-29D - Wellbore #1 - Plan #2 (12-30-10)	1,200.0	1,194.9	86.1	81.0	16.962 SF	
Pratt 29HD - Wellbore #1 - Plan #2 (12-30-10)	1,000.0	999.0	40.1	35.8	9.448 CC, ES	
Pratt 29HD - Wellbore #1 - Plan #2 (12-30-10)	1,100.0	1,097.6	41.7	37.0	8.919 SF	
Pratt 29LD - Wellbore #1 - Plan #1 (12-28-10)	1,000.0	999.0	20.2	15.9	4.757 CC	
Pratt 29LD - Wellbore #1 - Plan #1 (12-28-10)	1,050.0	1,048.9	20.3	15.8	4.551 ES	
Pratt 29LD - Wellbore #1 - Plan #1 (12-28-10)	1,150.0	1,148.7	21.3	16.4	4.373 SF	
Pratt QD - Wellbore #1 - Plan #2 (12-30-10)	200.0	200.0	59.9	59.3	92.920 CC, ES	
Pratt QD - Wellbore #1 - Plan #2 (12-30-10)	700.0	686.9	97.7	94.8	33.951 SF	

Offset Design													Pratt 24-29D Pad Sec.29-T1N-R68W - Pratt 14-29D - Wellbore #1 - Plan #2 (12-30-10)		Offset Site Error:		0.0 ft
Survey Program: 0-MWD															Offset Well Error:		0.0 ft
Reference		Offset		Semi Major Axis			Distance							Warning			
Measured Depth (ft)	Vertical Depth (ft)	Measured Depth (ft)	Vertical Depth (ft)	Reference (ft)	Offset (ft)	Highside Toolface (°)	Offset Wellbore Centre		Between Centres (ft)	Between Ellipses (ft)	Minimum Separation (ft)	Separation Factor					
							+N/-S (ft)	+E/-W (ft)									
0.0	0.0	0.0	0.0	0.0	0.0	-90.00	0.0	-19.9	19.9								
50.0	50.0	49.0	49.0	0.0	0.0	-90.00	0.0	-19.9	19.9	19.8	0.09	222.218					
100.0	100.0	99.0	99.0	0.1	0.1	-90.00	0.0	-19.9	19.9	19.7	0.19	102.208					
150.0	150.0	149.0	149.0	0.2	0.2	-90.00	0.0	-19.9	19.9	19.5	0.42	47.568					
200.0	200.0	199.0	199.0	0.3	0.3	-90.00	0.0	-19.9	19.9	19.2	0.64	30.936					
250.0	250.0	249.0	249.0	0.4	0.4	-90.00	0.0	-19.9	19.9	19.0	0.87	22.921					
300.0	300.0	299.0	299.0	0.5	0.5	-90.00	0.0	-19.9	19.9	18.8	1.09	18.205					
350.0	350.0	349.0	349.0	0.7	0.7	-90.00	0.0	-19.9	19.9	18.6	1.32	15.098					
400.0	400.0	399.0	399.0	0.8	0.8	-90.00	0.0	-19.9	19.9	18.3	1.54	12.897					
450.0	450.0	449.0	449.0	0.9	0.9	-90.00	0.0	-19.9	19.9	18.1	1.77	11.257					
500.0	500.0	499.0	499.0	1.0	1.0	-90.00	0.0	-19.9	19.9	17.9	1.99	9.986					
550.0	550.0	549.0	549.0	1.1	1.1	-90.00	0.0	-19.9	19.9	17.7	2.22	8.973					
600.0	600.0	599.0	599.0	1.2	1.2	-90.00	0.0	-19.9	19.9	17.4	2.44	8.147					
650.0	650.0	649.0	649.0	1.3	1.3	-90.00	0.0	-19.9	19.9	17.2	2.67	7.460					
700.0	700.0	699.0	699.0	1.4	1.4	-90.00	0.0	-19.9	19.9	17.0	2.89	6.880					
750.0	750.0	749.0	749.0	1.6	1.6	-90.00	0.0	-19.9	19.9	16.8	3.12	6.384					

CC - Min centre to center distance or convergent point, SF - min separation factor, ES - min ellipse separation

<b>Company:</b>	Synergy Resources	<b>Local Co-ordinate Reference:</b>	Well Pratt 13-29D
<b>Project:</b>	SEC.29-T1N-R68W	<b>TVD Reference:</b>	WELL @ 5155.0ft (Original Well Elev)
<b>Reference Site:</b>	Pratt 24-29D Pad Sec.29-T1N-R68W	<b>MD Reference:</b>	WELL @ 5155.0ft (Original Well Elev)
<b>Site Error:</b>	0.0ft	<b>North Reference:</b>	True
<b>Reference Well:</b>	Pratt 13-29D	<b>Survey Calculation Method:</b>	Minimum Curvature
<b>Well Error:</b>	0.0ft	<b>Output errors are at</b>	2.00 sigma
<b>Reference Wellbore</b>	Wellbore #1	<b>Database:</b>	Landmark
<b>Reference Design:</b>	Plan #1 (12-28-10)	<b>Offset TVD Reference:</b>	Offset Datum

Offset Design Pratt 24-29D Pad Sec.29-T1N-R68W - Pratt 14-29D - Wellbore #1 - Plan #2 (12-30-10)													Offset Site Error:	0.0 ft
Survey Program: 0-MWD													Offset Well Error:	0.0 ft
Reference	Offset	Semi Major Axis		Distance								Warning		
Measured Depth (ft)	Vertical Depth (ft)	Measured Depth (ft)	Vertical Depth (ft)	Reference (ft)	Offset (ft)	Highside Toolface (°)	Offset Wellbore Centre +N/-S (ft)	Offset Wellbore Centre +E/-W (ft)	Between Centres (ft)	Between Ellipses (ft)	Minimum Separation (ft)	Separation Factor		
800.0	800.0	799.0	799.0	1.7	1.7	-90.00	0.0	-19.9	19.9	16.5	3.34	5.954		
850.0	850.0	849.0	849.0	1.8	1.8	-90.00	0.0	-19.9	19.9	16.3	3.56	5.579		
900.0	900.0	899.0	899.0	1.9	1.9	-90.00	0.0	-19.9	19.9	16.1	3.79	5.248		
950.0	950.0	949.0	949.0	2.0	2.0	-90.00	0.0	-19.9	19.9	15.9	4.01	4.954		
1,000.0	1,000.0	999.0	999.0	2.1	2.1	-90.00	0.0	-19.9	19.9	15.6	4.24	4.691 CC		
1,011.8	1,011.8	1,010.8	1,010.8	2.1	2.1	-90.06	0.0	-19.9	19.9	15.6	4.29	4.637		
1,050.0	1,050.0	1,049.0	1,049.0	2.2	2.2	-91.21	-0.4	-19.9	19.9	15.4	4.45	4.470		
1,100.0	1,100.0	1,099.0	1,098.9	2.3	2.3	-94.91	-1.7	-19.9	20.0	15.3	4.66	4.283 ES		
1,150.0	1,150.0	1,148.9	1,148.8	2.5	2.4	-101.00	-3.9	-19.9	20.3	15.4	4.86	4.169		
1,200.0	1,200.0	1,198.7	1,198.5	2.6	2.5	-109.10	-6.9	-19.9	21.1	16.0	5.06	4.161 SF		
1,250.0	1,250.0	1,248.3	1,248.0	2.7	2.6	-92.04	-10.8	-19.9	22.6	17.4	5.26	4.300		
1,300.0	1,300.0	1,297.6	1,297.1	2.8	2.7	-103.16	-15.2	-20.3	25.7	20.3	5.48	4.700		
1,350.0	1,349.9	1,346.7	1,346.0	2.9	2.8	-112.38	-19.9	-21.4	30.7	25.0	5.69	5.391		
1,400.0	1,399.8	1,395.6	1,394.5	3.0	2.9	-119.31	-25.0	-23.3	37.3	31.4	5.90	6.325		
1,450.0	1,449.7	1,444.2	1,442.8	3.1	3.0	-124.28	-30.3	-26.0	45.5	39.4	6.12	7.438		
1,500.0	1,499.5	1,492.6	1,490.7	3.2	3.1	-127.79	-35.9	-29.4	55.1	48.8	6.34	8.696		
1,550.0	1,549.1	1,540.6	1,538.2	3.4	3.3	-130.25	-41.8	-33.5	65.9	59.4	6.56	10.058		
1,600.0	1,598.7	1,588.3	1,585.2	3.5	3.4	-131.99	-47.9	-38.3	78.0	71.2	6.77	11.513		
1,650.0	1,648.2	1,635.5	1,631.7	3.6	3.5	-133.21	-54.2	-43.8	91.2	84.2	7.00	13.028		
1,700.0	1,697.5	1,682.4	1,677.7	3.8	3.7	-134.07	-60.8	-50.0	105.5	98.3	7.23	14.607		
1,750.0	1,746.6	1,729.0	1,723.3	3.9	3.8	-134.67	-67.6	-56.8	121.0	113.5	7.46	16.208		
1,800.0	1,795.6	1,776.2	1,769.5	4.1	4.0	-135.26	-74.6	-63.9	137.2	129.5	7.70	17.819		
1,850.0	1,844.4	1,823.3	1,815.5	4.2	4.2	-135.92	-81.6	-71.0	154.0	146.0	7.94	19.389		
1,900.0	1,893.1	1,870.1	1,861.2	4.4	4.3	-136.59	-88.5	-78.1	171.4	163.2	8.18	20.943		
1,950.0	1,941.5	1,916.6	1,906.7	4.6	4.5	-137.28	-95.4	-85.1	189.5	181.0	8.44	22.450		



**Company:** Synergy Resources  
**Project:** SEC.29-T1N-R68W  
**Reference Site:** Pratt 24-29D Pad Sec.29-T1N-R68W  
**Site Error:** 0.0ft  
**Reference Well:** Pratt 13-29D  
**Well Error:** 0.0ft  
**Reference Wellbore:** Wellbore #1  
**Reference Design:** Plan #1 (12-28-10)

**Local Co-ordinate Reference:** Well Pratt 13-29D  
**TVD Reference:** WELL @ 5155.0ft (Original Well Elev)  
**MD Reference:** WELL @ 5155.0ft (Original Well Elev)  
**North Reference:** True  
**Survey Calculation Method:** Minimum Curvature  
**Output errors are at** 2.00 sigma  
**Database:** Landmark  
**Offset TVD Reference:** Offset Datum

Offset Design Pratt 24-29D Pad Sec.29-T1N-R68W - Pratt 24-29D - Wellbore #1 - Plan #2 (12-30-10)													Offset Site Error:	0.0 ft
Survey Program: 0-MWD													Offset Well Error:	0.0 ft
Reference	Offset	Semi Major Axis		Distance		Warning								
Measured Depth (ft)	Vertical Depth (ft)	Measured Depth (ft)	Vertical Depth (ft)	Reference (ft)	Offset (ft)	Highside Toolface (°)	Offset Wellbore Centre +N/-S (ft)	+E/-W (ft)	Between Centres (ft)	Between Ellipses (ft)	Minimum Separation (ft)	Separation Factor		
0.0	0.0	0.0	0.0	0.0	0.0	90.00	0.0	80.1	80.1					
50.0	50.0	50.0	50.0	0.0	0.0	90.00	0.0	80.1	80.1	80.0	0.09	885.458		
100.0	100.0	100.0	100.0	0.1	0.1	90.00	0.0	80.1	80.1	79.9	0.20	409.652		
150.0	150.0	150.0	150.0	0.2	0.2	90.00	0.0	80.1	80.1	79.7	0.42	190.587		
200.0	200.0	200.0	200.0	0.3	0.3	90.00	0.0	80.1	80.1	79.5	0.65	124.180		
250.0	250.0	250.0	250.0	0.4	0.4	90.00	0.0	80.1	80.1	79.2	0.87	92.092		
300.0	300.0	300.0	300.0	0.5	0.5	90.00	0.0	80.1	80.1	79.0	1.09	73.182		
350.0	350.0	350.0	350.0	0.7	0.7	90.00	0.0	80.1	80.1	78.8	1.32	60.715		
400.0	400.0	400.0	400.0	0.8	0.8	90.00	0.0	80.1	80.1	78.6	1.54	51.877		
450.0	450.0	450.0	450.0	0.9	0.9	90.00	0.0	80.1	80.1	78.3	1.77	45.286		
500.0	500.0	500.0	500.0	1.0	1.0	90.00	0.0	80.1	80.1	78.1	1.99	40.180		
550.0	550.0	550.0	550.0	1.1	1.1	90.00	0.0	80.1	80.1	77.9	2.22	36.109		
600.0	600.0	600.0	600.0	1.2	1.2	90.00	0.0	80.1	80.1	77.7	2.44	32.787		
650.0	650.0	650.0	650.0	1.3	1.3	90.00	0.0	80.1	80.1	77.4	2.67	30.025		
700.0	700.0	700.0	700.0	1.4	1.4	90.00	0.0	80.1	80.1	77.2	2.89	27.692		
750.0	750.0	750.0	750.0	1.6	1.6	90.00	0.0	80.1	80.1	77.0	3.12	25.696		
800.0	800.0	800.0	800.0	1.7	1.7	90.00	0.0	80.1	80.1	76.8	3.34	23.968		
850.0	850.0	850.0	850.0	1.8	1.8	90.00	0.0	80.1	80.1	76.5	3.57	22.457		
900.0	900.0	900.0	900.0	1.9	1.9	90.00	0.0	80.1	80.1	76.3	3.79	21.126		
950.0	950.0	950.0	950.0	2.0	2.0	90.00	0.0	80.1	80.1	76.1	4.02	19.944		
1,000.0	1,000.0	1,000.0	1,000.0	2.1	2.1	90.00	0.0	80.1	80.1	75.9	4.24	18.887 CC, ES		
1,050.0	1,050.0	1,048.8	1,048.8	2.2	2.2	90.15	-0.2	80.5	80.5	76.0	4.45	18.071		
1,100.0	1,100.0	1,097.6	1,097.6	2.3	2.3	90.57	-0.8	81.6	81.6	76.9	4.67	17.490		
1,150.0	1,150.0	1,146.3	1,146.2	2.5	2.4	91.25	-1.8	83.4	83.5	78.6	4.87	17.135		
1,200.0	1,200.0	1,194.9	1,194.8	2.6	2.5	92.15	-3.2	85.9	86.1	81.0	5.08	16.962 SF		
1,250.0	1,250.0	1,243.4	1,243.1	2.7	2.6	120.83	-5.0	89.1	89.8	84.5	5.29	16.984		
1,300.0	1,300.0	1,291.7	1,291.2	2.8	2.7	122.59	-7.2	93.1	94.7	89.2	5.49	17.236		
1,350.0	1,349.9	1,339.6	1,338.8	2.9	2.8	124.71	-9.8	97.7	101.0	95.3	5.71	17.699		
1,400.0	1,399.8	1,387.2	1,386.0	3.0	2.9	127.05	-12.7	102.9	108.7	102.8	5.92	18.376		
1,450.0	1,449.7	1,434.2	1,432.6	3.1	3.1	129.45	-16.0	108.8	117.9	111.8	6.13	19.241		
1,500.0	1,499.5	1,480.8	1,478.6	3.2	3.2	131.83	-19.6	115.3	128.7	122.4	6.34	20.303		
1,550.0	1,549.1	1,526.8	1,523.8	3.4	3.3	134.10	-23.5	122.3	141.1	134.5	6.55	21.526		
1,600.0	1,598.7	1,572.1	1,568.3	3.5	3.4	136.21	-27.7	129.9	155.0	148.3	6.76	22.919		
1,650.0	1,648.2	1,616.7	1,612.0	3.6	3.6	138.15	-32.1	137.9	170.6	163.6	6.98	24.442		
1,700.0	1,697.5	1,660.5	1,654.7	3.8	3.7	139.89	-36.9	146.4	187.7	180.5	7.19	26.104		

<b>Company:</b>	Synergy Resources	<b>Local Co-ordinate Reference:</b>	Well Pratt 13-29D
<b>Project:</b>	SEC.29-T1N-R68W	<b>TVD Reference:</b>	WELL @ 5155.0ft (Original Well Elev)
<b>Reference Site:</b>	Pratt 24-29D Pad Sec.29-T1N-R68W	<b>MD Reference:</b>	WELL @ 5155.0ft (Original Well Elev)
<b>Site Error:</b>	0.0ft	<b>North Reference:</b>	True
<b>Reference Well:</b>	Pratt 13-29D	<b>Survey Calculation Method:</b>	Minimum Curvature
<b>Well Error:</b>	0.0ft	<b>Output errors are at</b>	2.00 sigma
<b>Reference Wellbore</b>	Wellbore #1	<b>Database:</b>	Landmark
<b>Reference Design:</b>	Plan #1 (12-28-10)	<b>Offset TVD Reference:</b>	Offset Datum

Offset Design Pratt 24-29D Pad Sec.29-T1N-R68W - Pratt 29HD - Wellbore #1 - Plan #2 (12-30-10)													Offset Site Error:	0.0 ft
Survey Program: 0-MWD													Offset Well Error:	0.0 ft
Reference		Offset		Semi Major Axis		Highside Toolface (°)	Distance		Minimum Separation (ft)	Separation Factor	Warning			
Measured Depth (ft)	Vertical Depth (ft)	Measured Depth (ft)	Vertical Depth (ft)	Reference (ft)	Offset (ft)		Offset Wellbore Centre +N/-S (ft)	+E/-W (ft)						
0.0	0.0	0.0	0.0	0.0	0.0	-90.00	0.0	-40.1	40.1					
50.0	50.0	49.0	49.0	0.0	0.0	-90.00	0.0	-40.1	40.1	0.09	447.566			
100.0	100.0	99.0	99.0	0.1	0.1	-90.00	0.0	-40.1	40.1	0.19	205.855			
150.0	150.0	149.0	149.0	0.2	0.2	-90.00	0.0	-40.1	40.1	0.42	95.806			
200.0	200.0	199.0	199.0	0.3	0.3	-90.00	0.0	-40.1	40.1	0.64	62.307			
250.0	250.0	249.0	249.0	0.4	0.4	-90.00	0.0	-40.1	40.1	0.87	46.165			
300.0	300.0	299.0	299.0	0.5	0.5	-90.00	0.0	-40.1	40.1	1.09	36.666			
350.0	350.0	349.0	349.0	0.7	0.7	-90.00	0.0	-40.1	40.1	1.32	30.409			
400.0	400.0	399.0	399.0	0.8	0.8	-90.00	0.0	-40.1	40.1	1.54	25.976			
450.0	450.0	449.0	449.0	0.9	0.9	-90.00	0.0	-40.1	40.1	1.77	22.672			
500.0	500.0	499.0	499.0	1.0	1.0	-90.00	0.0	-40.1	40.1	1.99	20.113			
550.0	550.0	549.0	549.0	1.1	1.1	-90.00	0.0	-40.1	40.1	2.22	18.073			
600.0	600.0	599.0	599.0	1.2	1.2	-90.00	0.0	-40.1	40.1	2.44	16.409			
650.0	650.0	649.0	649.0	1.3	1.3	-90.00	0.0	-40.1	40.1	2.67	15.025			
700.0	700.0	699.0	699.0	1.4	1.4	-90.00	0.0	-40.1	40.1	2.89	13.857			
750.0	750.0	749.0	749.0	1.6	1.6	-90.00	0.0	-40.1	40.1	3.12	12.857			
800.0	800.0	799.0	799.0	1.7	1.7	-90.00	0.0	-40.1	40.1	3.34	11.992			
850.0	850.0	849.0	849.0	1.8	1.8	-90.00	0.0	-40.1	40.1	3.56	11.236			
900.0	900.0	899.0	899.0	1.9	1.9	-90.00	0.0	-40.1	40.1	3.79	10.569			
950.0	950.0	949.0	949.0	2.0	2.0	-90.00	0.0	-40.1	40.1	4.01	9.978			
1,000.0	1,000.0	999.0	999.0	2.1	2.1	-90.00	0.0	-40.1	40.1	4.24	9.448 CC, ES			
1,050.0	1,050.0	1,048.3	1,048.3	2.2	2.2	-89.87	0.1	-40.5	40.5	4.46	9.076			
1,100.0	1,100.0	1,097.6	1,097.6	2.3	2.3	-89.50	0.4	-41.7	41.7	4.68	8.919 SF			
1,150.0	1,150.0	1,146.9	1,146.8	2.5	2.4	-88.92	0.8	-43.7	43.8	4.89	8.953			
1,200.0	1,200.0	1,196.0	1,195.9	2.6	2.5	-88.20	1.5	-46.6	46.7	5.11	9.149			
1,250.0	1,250.0	1,245.1	1,244.8	2.7	2.6	-60.32	2.3	-50.3	50.3	5.32	9.451			
1,300.0	1,300.0	1,294.0	1,293.5	2.8	2.8	-60.55	3.3	-54.8	54.3	5.54	9.803			
1,350.0	1,349.9	1,342.9	1,342.1	2.9	2.9	-61.31	4.5	-60.1	58.7	5.75	10.199			
1,400.0	1,399.8	1,391.6	1,390.4	3.0	3.0	-62.46	5.9	-66.1	63.5	5.97	10.639			
1,450.0	1,449.7	1,440.2	1,438.5	3.1	3.1	-63.91	7.4	-73.0	68.8	6.19	11.115			
1,500.0	1,499.5	1,488.7	1,486.3	3.2	3.3	-65.55	9.1	-80.6	74.5	6.41	11.632			
1,550.0	1,549.1	1,536.9	1,533.8	3.4	3.4	-67.30	11.0	-89.0	80.9	6.64	12.175			
1,600.0	1,598.7	1,585.1	1,581.0	3.5	3.6	-69.12	13.0	-98.1	87.7	6.88	12.755			
1,650.0	1,648.2	1,633.0	1,627.8	3.6	3.7	-70.94	15.2	-108.0	95.1	7.13	13.348			
1,700.0	1,697.5	1,680.7	1,674.3	3.8	3.9	-72.74	17.6	-118.6	103.2	7.38	13.970			
1,750.0	1,746.6	1,729.3	1,721.5	3.9	4.1	-74.57	20.2	-130.0	111.6	7.67	14.557			
1,800.0	1,795.6	1,778.4	1,769.2	4.1	4.3	-76.54	22.8	-141.5	120.0	7.96	15.082			
1,850.0	1,844.4	1,827.5	1,816.8	4.2	4.5	-78.60	25.3	-153.0	128.4	8.28	15.511			
1,900.0	1,893.1	1,876.5	1,864.4	4.4	4.7	-80.75	27.9	-164.4	136.8	8.61	15.891			
1,950.0	1,941.5	1,925.4	1,911.9	4.6	4.9	-82.97	30.5	-175.9	145.3	8.97	16.192			
2,000.0	1,989.6	1,974.3	1,959.3	4.8	5.1	-85.26	33.1	-187.4	154.0	9.35	16.460			
2,050.0	2,037.7	2,023.1	2,006.7	5.0	5.4	-87.55	35.6	-198.8	162.8	9.76	16.685			
2,100.0	2,085.8	2,071.9	2,054.0	5.2	5.6	-89.60	38.2	-210.2	172.0	10.17	16.904			
2,150.0	2,133.9	2,120.7	2,101.4	5.4	5.8	-91.45	40.8	-221.7	181.3	10.60	17.103			
2,200.0	2,182.0	2,169.5	2,148.8	5.7	6.0	-93.12	43.3	-233.1	190.7	11.03	17.294			



<b>Company:</b>	Synergy Resources	<b>Local Co-ordinate Reference:</b>	Well Pratt 13-29D
<b>Project:</b>	SEC.29-T1N-R68W	<b>TVD Reference:</b>	WELL @ 5155.0ft (Original Well Elev)
<b>Reference Site:</b>	Pratt 24-29D Pad Sec.29-T1N-R68W	<b>MD Reference:</b>	WELL @ 5155.0ft (Original Well Elev)
<b>Site Error:</b>	0.0ft	<b>North Reference:</b>	True
<b>Reference Well:</b>	Pratt 13-29D	<b>Survey Calculation Method:</b>	Minimum Curvature
<b>Well Error:</b>	0.0ft	<b>Output errors are at</b>	2.00 sigma
<b>Reference Wellbore</b>	Wellbore #1	<b>Database:</b>	Landmark
<b>Reference Design:</b>	Plan #1 (12-28-10)	<b>Offset TVD Reference:</b>	Offset Datum

Offset Design Pratt 24-29D Pad Sec.29-T1N-R68W - Pratt 29LD - Wellbore #1 - Plan #1 (12-28-10)													Offset Site Error:	0.0 ft
Survey Program: 0-MWD													Offset Well Error:	0.0 ft
Reference	Offset	Semi Major Axis		Distance		Warning								
Measured Depth (ft)	Vertical Depth (ft)	Measured Depth (ft)	Vertical Depth (ft)	Reference (ft)	Offset (ft)	Highside Toolface (°)	Offset Wellbore Centre +N/-S (ft)	+E/-W (ft)	Between Centres (ft)	Between Ellipses (ft)	Minimum Separation (ft)	Separation Factor		
0.0	0.0	0.0	0.0	0.0	0.0	90.01	0.0	20.2	20.2					
50.0	50.0	49.0	49.0	0.0	0.0	90.01	0.0	20.2	20.2	20.1	0.09	225.348		
100.0	100.0	99.0	99.0	0.1	0.1	90.01	0.0	20.2	20.2	20.0	0.19	103.647		
150.0	150.0	149.0	149.0	0.2	0.2	90.01	0.0	20.2	20.2	19.7	0.42	48.238		
200.0	200.0	199.0	199.0	0.3	0.3	90.01	0.0	20.2	20.2	19.5	0.64	31.371		
250.0	250.0	249.0	249.0	0.4	0.4	90.01	0.0	20.2	20.2	19.3	0.87	23.244		
300.0	300.0	299.0	299.0	0.5	0.5	90.01	0.0	20.2	20.2	19.1	1.09	18.461		
350.0	350.0	349.0	349.0	0.7	0.7	90.01	0.0	20.2	20.2	18.8	1.32	15.311		
400.0	400.0	399.0	399.0	0.8	0.8	90.01	0.0	20.2	20.2	18.6	1.54	13.079		
450.0	450.0	449.0	449.0	0.9	0.9	90.01	0.0	20.2	20.2	18.4	1.77	11.415		
500.0	500.0	499.0	499.0	1.0	1.0	90.01	0.0	20.2	20.2	18.2	1.99	10.127		
550.0	550.0	549.0	549.0	1.1	1.1	90.01	0.0	20.2	20.2	18.0	2.22	9.100		
600.0	600.0	599.0	599.0	1.2	1.2	90.01	0.0	20.2	20.2	17.7	2.44	8.262		
650.0	650.0	649.0	649.0	1.3	1.3	90.01	0.0	20.2	20.2	17.5	2.67	7.565		
700.0	700.0	699.0	699.0	1.4	1.4	90.01	0.0	20.2	20.2	17.3	2.89	6.977		
750.0	750.0	749.0	749.0	1.6	1.6	90.01	0.0	20.2	20.2	17.1	3.12	6.473		
800.0	800.0	799.0	799.0	1.7	1.7	90.01	0.0	20.2	20.2	16.8	3.34	6.038		
850.0	850.0	849.0	849.0	1.8	1.8	90.01	0.0	20.2	20.2	16.6	3.56	5.657		
900.0	900.0	899.0	899.0	1.9	1.9	90.01	0.0	20.2	20.2	16.4	3.79	5.322		
950.0	950.0	949.0	949.0	2.0	2.0	90.01	0.0	20.2	20.2	16.2	4.01	5.024		
1,000.0	1,000.0	999.0	999.0	2.1	2.1	90.01	0.0	20.2	20.2	15.9	4.24	4.757 CC		
1,050.0	1,050.0	1,048.9	1,048.9	2.2	2.2	91.17	-0.4	20.2	20.3	15.8	4.45	4.551 ES		
1,100.0	1,100.0	1,098.8	1,098.8	2.3	2.3	94.68	-1.7	20.5	20.6	15.9	4.66	4.413		
1,150.0	1,150.0	1,148.7	1,148.6	2.5	2.4	100.26	-3.8	20.9	21.3	16.4	4.86	4.373 SF		
1,200.0	1,200.0	1,198.4	1,198.3	2.6	2.5	107.41	-6.7	21.5	22.5	17.5	5.06	4.453		
1,250.0	1,250.0	1,248.0	1,247.7	2.7	2.6	143.32	-10.5	22.2	25.0	19.7	5.27	4.746		
1,300.0	1,300.0	1,297.3	1,296.8	2.8	2.7	152.18	-15.1	23.2	29.3	23.8	5.47	5.349		
1,350.0	1,349.9	1,346.3	1,345.5	2.9	2.8	159.97	-20.5	24.2	35.6	29.9	5.69	6.257		
1,400.0	1,399.8	1,394.8	1,393.6	3.0	2.9	166.19	-26.7	25.4	43.9	38.0	5.89	7.450		
1,450.0	1,449.7	1,442.9	1,441.1	3.1	3.0	170.91	-33.5	26.8	54.2	48.1	6.11	8.874		
1,500.0	1,499.5	1,490.3	1,487.9	3.2	3.1	174.45	-41.1	28.3	66.3	60.0	6.31	10.505		
1,550.0	1,549.1	1,537.1	1,534.0	3.4	3.3	177.11	-49.3	29.9	80.2	73.7	6.52	12.297		
1,600.0	1,598.7	1,583.2	1,579.2	3.5	3.4	179.14	-58.0	31.6	95.8	89.1	6.73	14.241		
1,650.0	1,648.2	1,628.4	1,623.4	3.6	3.5	-179.29	-67.4	33.5	113.0	106.1	6.93	16.300		
1,700.0	1,697.5	1,672.9	1,666.7	3.8	3.7	-178.06	-77.2	35.4	131.8	124.7	7.13	18.476		
1,750.0	1,746.6	1,716.4	1,709.0	3.9	3.9	-177.08	-87.4	37.5	152.1	144.8	7.34	20.722		
1,800.0	1,795.6	1,761.4	1,752.5	4.1	4.0	-176.27	-98.4	39.6	173.7	166.1	7.54	23.038		
1,850.0	1,844.4	1,806.1	1,795.8	4.2	4.2	-175.65	-109.3	41.8	196.0	188.2	7.73	25.341		

<b>Company:</b>	Synergy Resources	<b>Local Co-ordinate Reference:</b>	Well Pratt 13-29D
<b>Project:</b>	SEC.29-T1N-R68W	<b>TVD Reference:</b>	WELL @ 5155.0ft (Original Well Elev)
<b>Reference Site:</b>	Pratt 24-29D Pad Sec.29-T1N-R68W	<b>MD Reference:</b>	WELL @ 5155.0ft (Original Well Elev)
<b>Site Error:</b>	0.0ft	<b>North Reference:</b>	True
<b>Reference Well:</b>	Pratt 13-29D	<b>Survey Calculation Method:</b>	Minimum Curvature
<b>Well Error:</b>	0.0ft	<b>Output errors are at</b>	2.00 sigma
<b>Reference Wellbore</b>	Wellbore #1	<b>Database:</b>	Landmark
<b>Reference Design:</b>	Plan #1 (12-28-10)	<b>Offset TVD Reference:</b>	Offset Datum

Offset Design Pratt 24-29D Pad Sec.29-T1N-R68W - Pratt QD - Wellbore #1 - Plan #2 (12-30-10)													Offset Site Error:	0.0 ft
Survey Program: 0-MWD													Offset Well Error:	0.0 ft
Reference	Offset	Semi Major Axis		Distance		Warning								
Measured Depth (ft)	Vertical Depth (ft)	Measured Depth (ft)	Vertical Depth (ft)	Reference (ft)	Offset (ft)	Highside Toolface (°)	Offset Wellbore Centre +N/-S (ft)	+E/-W (ft)	Between Centres (ft)	Between Ellipses (ft)	Minimum Separation (ft)	Separation Factor		
0.0	0.0	0.0	0.0	0.0	0.0	90.35	-0.4	59.9	59.9					
50.0	50.0	50.0	50.0	0.0	0.0	90.35	-0.4	59.9	59.9	59.9	0.09	662.558		
100.0	100.0	100.0	100.0	0.1	0.1	90.35	-0.4	59.9	59.9	59.7	0.20	306.528		
150.0	150.0	150.0	150.0	0.2	0.2	90.35	-0.4	59.9	59.9	59.5	0.42	142.610		
200.0	200.0	200.0	200.0	0.3	0.3	90.35	-0.4	59.9	59.9	59.3	0.65	92.920 CC, ES		
250.0	250.0	249.2	249.2	0.4	0.4	90.59	-0.6	60.3	60.3	59.4	0.86	70.110		
300.0	300.0	298.3	298.3	0.5	0.5	91.28	-1.4	61.3	61.3	60.3	1.07	57.061		
350.0	350.0	347.4	347.3	0.7	0.6	92.37	-2.6	63.0	63.1	61.8	1.29	48.795		
400.0	400.0	396.4	396.2	0.8	0.7	93.81	-4.3	65.4	65.6	64.1	1.51	43.409		
450.0	450.0	445.2	444.9	0.9	0.9	95.49	-6.6	68.4	68.9	67.2	1.74	39.642		
500.0	500.0	494.0	493.4	1.0	1.0	97.34	-9.3	72.1	73.0	71.0	1.96	37.221		
550.0	550.0	542.5	541.7	1.1	1.1	99.27	-12.5	76.4	77.9	75.7	2.19	35.577		
600.0	600.0	590.9	589.7	1.2	1.3	101.20	-16.1	81.4	83.6	81.2	2.42	34.617		
650.0	650.0	639.0	637.3	1.3	1.4	103.09	-20.2	87.0	90.2	87.6	2.65	34.085		
700.0	700.0	686.9	684.6	1.4	1.6	104.89	-24.8	93.2	97.7	94.8	2.88	33.951 SF		
750.0	750.0	734.5	731.4	1.6	1.8	106.59	-29.8	100.0	106.0	102.9	3.11	34.064		
800.0	800.0	781.9	777.9	1.7	1.9	108.15	-35.2	107.4	115.2	111.8	3.35	34.415		
850.0	850.0	828.9	823.8	1.8	2.1	109.59	-41.0	115.4	125.2	121.6	3.59	34.915		
900.0	900.0	875.5	869.3	1.9	2.4	110.89	-47.3	123.9	136.1	132.3	3.83	35.553		
950.0	950.0	921.8	914.2	2.0	2.6	112.08	-53.9	132.9	147.8	143.7	4.07	36.287		
1,000.0	1,000.0	967.7	958.6	2.1	2.8	113.15	-60.9	142.4	160.3	156.0	4.32	37.090		
1,050.0	1,050.0	1,013.3	1,002.4	2.2	3.1	114.12	-68.2	152.4	173.6	169.0	4.57	37.965		
1,100.0	1,100.0	1,058.4	1,045.6	2.3	3.3	114.99	-75.9	162.8	187.7	182.9	4.83	38.858		

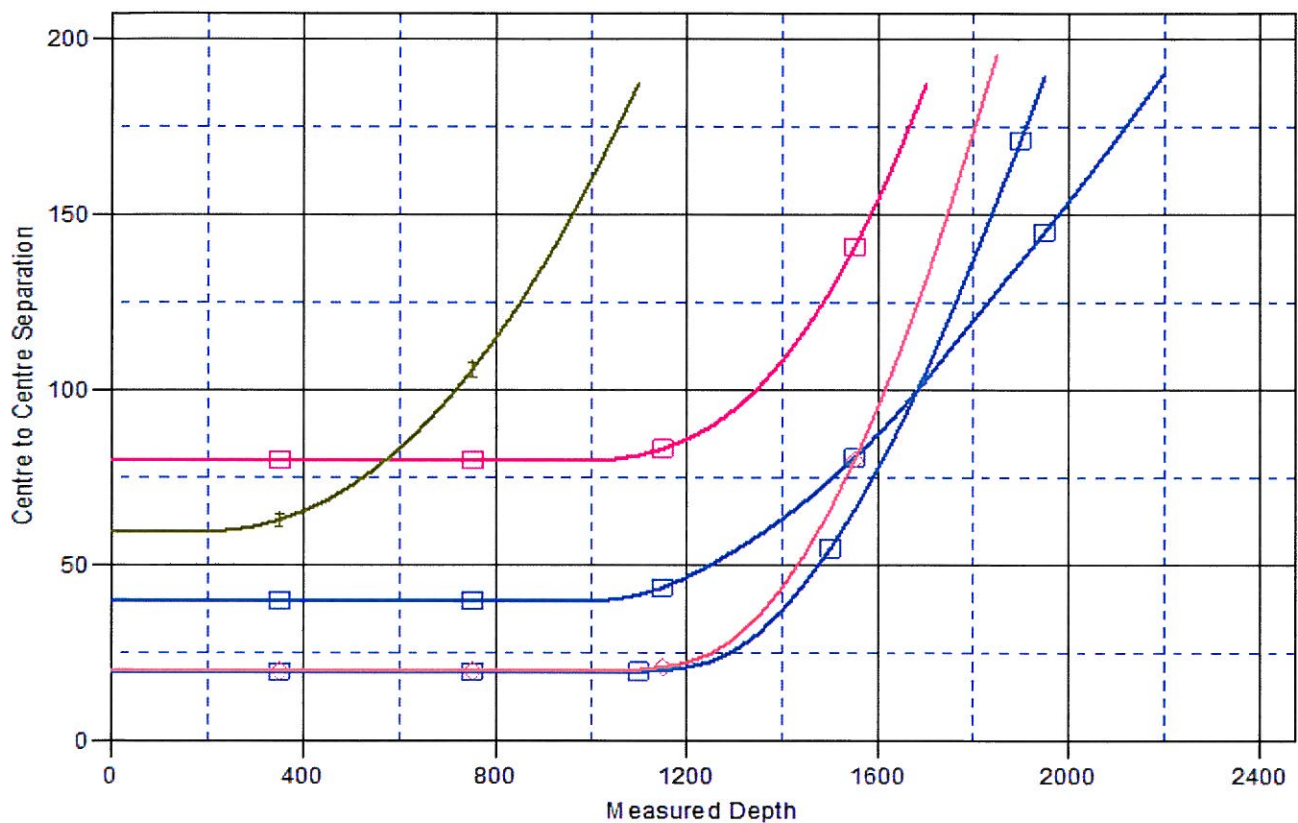


**Company:** Synergy Resources  
**Project:** SEC.29-T1N-R68W  
**Reference Site:** Pratt 24-29D Pad Sec.29-T1N-R68W  
**Site Error:** 0.0ft  
**Reference Well:** Pratt 13-29D  
**Well Error:** 0.0ft  
**Reference Wellbore:** Wellbore #1  
**Reference Design:** Plan #1 (12-28-10)

**Local Co-ordinate Reference:** Well Pratt 13-29D  
**TVD Reference:** WELL @ 5155.0ft (Original Well Elev)  
**MD Reference:** WELL @ 5155.0ft (Original Well Elev)  
**North Reference:** True  
**Survey Calculation Method:** Minimum Curvature  
**Output errors are at** 2.00 sigma  
**Database:** Landmark  
**Offset TVD Reference:** Offset Datum

Reference Depths are relative to WELL @ 5155.0ft (Original Well Elev) Coordinates are relative to: Pratt 13-29D  
 Offset Depths are relative to Offset Datum Coordinate System is US State Plane 1983, Colorado Northern Zone  
 Central Meridian is 105° 30' 0.000 W ° Grid Convergence at Surface is: 0.30°

### Ladder Plot



### LEGEND

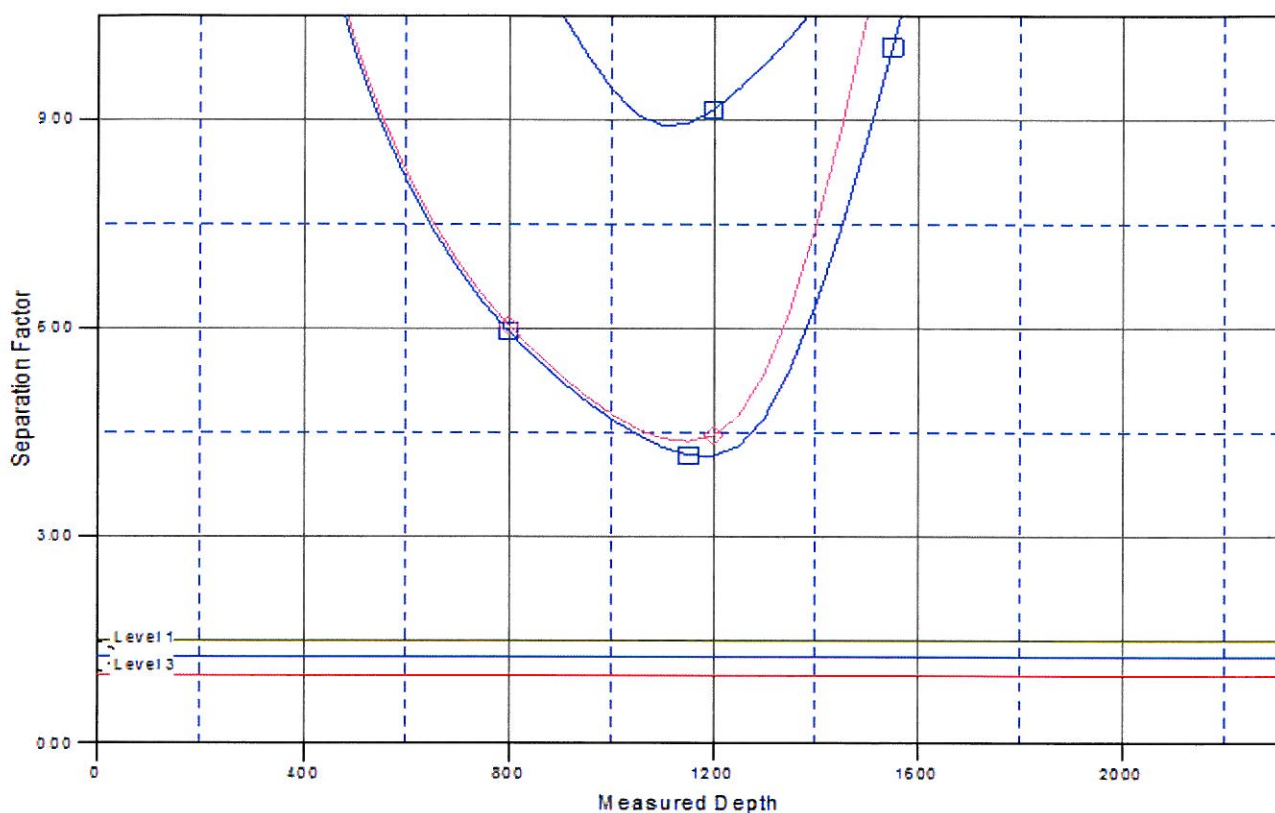
Pratt 24-29D, Wellbore #1, Plan #2 (12-30-10) V0 ■ Pratt 14-29D, Wellbore #1, Plan #2 (12-30-10) V0 ■ Pratt QD, Wellbore #1, Plan #2 (12-30-10) V0 ■  
 Pratt 29HD, Wellbore #1, Plan #2 (12-30-10) V0 ■ Pratt 29LD, Wellbore #1, Plan #1 (12-28-10) V0 ■

**Company:** Synergy Resources  
**Project:** SEC.29-T1N-R68W  
**Reference Site:** Pratt 24-29D Pad Sec.29-T1N-R68W  
**Site Error:** 0.0ft  
**Reference Well:** Pratt 13-29D  
**Well Error:** 0.0ft  
**Reference Wellbore:** Wellbore #1  
**Reference Design:** Plan #1 (12-28-10)

**Local Co-ordinate Reference:** Well Pratt 13-29D  
**TVD Reference:** WELL @ 5155.0ft (Original Well Elev)  
**MD Reference:** WELL @ 5155.0ft (Original Well Elev)  
**North Reference:** True  
**Survey Calculation Method:** Minimum Curvature  
**Output errors are at** 2.00 sigma  
**Database:** Landmark  
**Offset TVD Reference:** Offset Datum

Reference Depths are relative to WELL @ 5155.0ft (Original Well Elev) Coordinates are relative to: Pratt 13-29D  
 Offset Depths are relative to Offset Datum  
 Central Meridian is 105° 30' 0.000 W °  
 Coordinate System is US State Plane 1983, Colorado Northern Zone  
 Grid Convergence at Surface is: 0.30°

### Separation Factor Plot



### LEGEND

Pratt 24-29D, Wellbore #1, Plan #2 (12-30-10) V0  
 Pratt 14-29D, Wellbore #1, Plan #2 (12-30-10) V0  
 Pratt QD, Wellbore #1, Plan #2 (12-30-10) V0  
 Pratt 29HD, Wellbore #1, Plan #2 (12-30-10) V0  
 Pratt 29LD, Wellbore #1, Plan #1 (12-28-10) V0