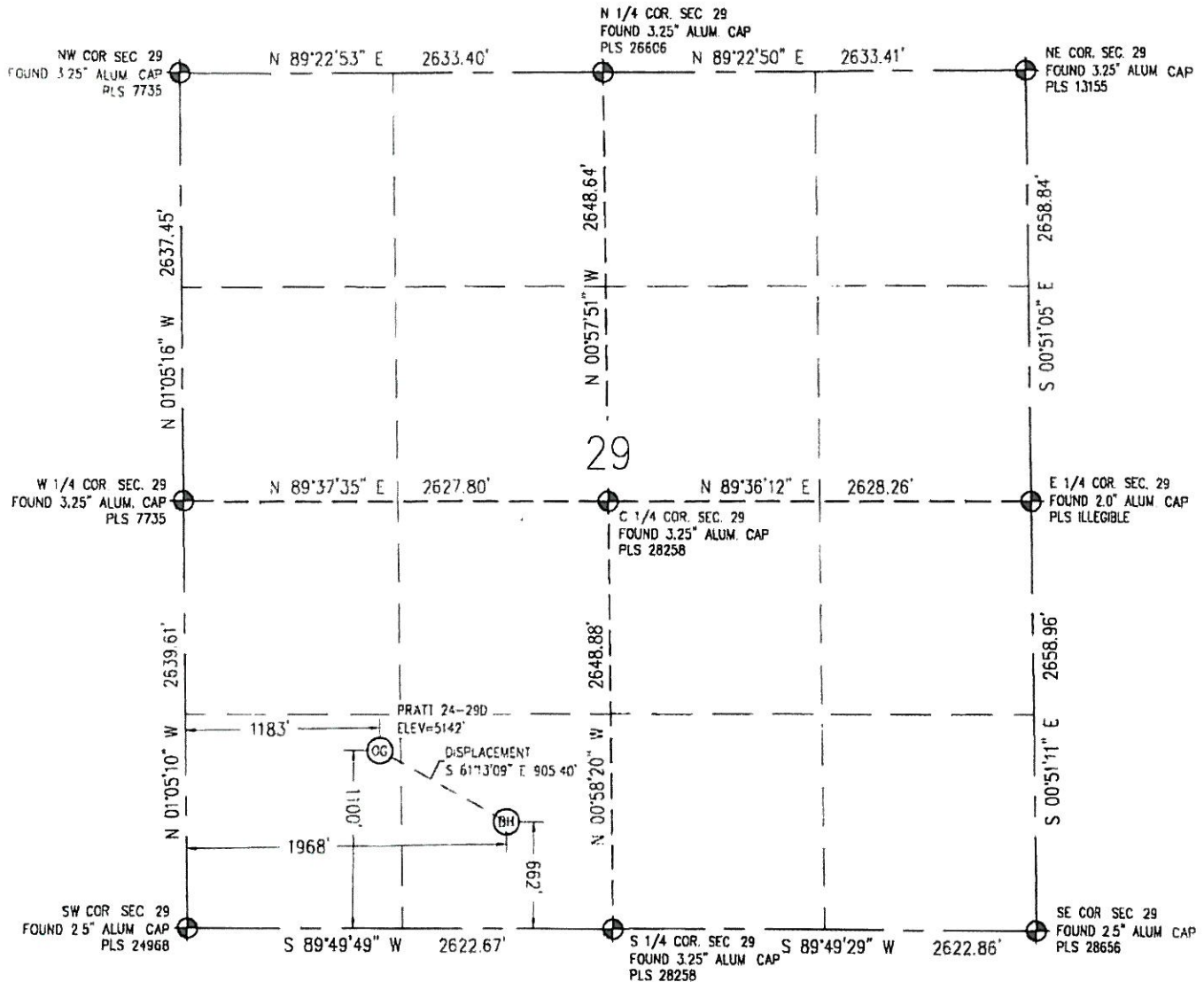


Baseline Engineering Corp. 710 11th Avenue Suite 105 Greeley, Colorado 80631

WELL LOCATION CERTIFICATE

THIS MAP DOES NOT REPRESENT A BOUNDARY SURVEY

SECTION 29
TOWNSHIP 1 NORTH
RANGE 68 WEST



IN ACCORDANCE WITH A REQUEST FROM CRAIG RASMUSON - SYNERGY RESOURCES, BASELINE ENGINEERING CORP. HAS DETERMINED THE LOCATION OF THE PRATT 24-29D TO BE 1100' FSL AND 1183' FWL, AS MEASURED AT NINETY (90) DEGREES FROM THE SECTION LINE OF SECTION 29, TOWNSHIP 1 NORTH, RANGE 68 WEST AND THE BOTTOM HOLE LOCATION TO BE 662' FSL AND 1968' FWL OF SECTION 29, TOWNSHIP 1 NORTH, RANGE 68 WEST, 6TH PRINCIPAL MERIDIAN, WELD COUNTY, COLORADO.

I HEREBY CERTIFY THAT THIS WELL LOCATION CERTIFICATE WAS PREPARED BY ME, OR UNDER MY DIRECT SUPERVISION, THAT THE FIELD WORK WAS COMPLETED ON 12/22/2010, THAT IT IS NOT A LAND SURVEY PLAT OR AN IMPROVEMENT SURVEY PLAT, AND THAT IT IS NOT TO BE RELIED UPON FOR ESTABLISHMENT OF FENCE, BUILDING, OR OTHER FUTURE IMPROVEMENT LINES

Scale 1" = 1000 ft



NOTES.

- 1) LAT/LONG SHOWN ARE BASED ON A GPS OBSERVATION (NAD83)
- 2) BEARINGS SHOWN ARE GRID BEARINGS OF THE COLORADO STATE PLANE COORDINATE SYSTEM, NORTH ZONE, NORTH AMERICAN DATUM 1983/2007
- 3) GROUND ELEVATIONS ARE BASED ON A GPS OBSERVATION (NAVD 88 DATUM)
- 4) ALL DISTANCES SHOWN ARE FIELD MEASURED UNLESS OTHERWISE NOTED
- 5) IMPROVEMENTS: SEE VISIBLE IMPROVEMENTS EXHIBIT FOR ALL VISIBLE IMPROVEMENTS WITHIN 400' OF WELL HEAD
- 6) SURFACE USE: UNDEVELOPED FIELD
- 7) NEAREST EXISTING WELL: PRATT NO 2 - 40' W

NOTICE: According to Colorado law you MUST commence any legal action based upon any defect in this W.L.C. within three years after you first discover such defect. In no event may any action based upon any defect in this W.L.C. be commenced more than ten years from this said date of the certification shown herein

SURFACE HOLE.

LATITUDE: 40 017779" N
LONGITUDE: 105 032689" W
PDOP: 1.1
1/4, 1/4 SW1/4 SW1/4
NEAREST PROPERTY LINE: 56' S

BOTTOM HOLE:

LATITUDE: 40 016571" N
LONGITUDE: 105.029845" W

LEGEND

- - FOUND/SET SURVEY MONUMENT PER MONUMENT RECORD EXCEPTIONS NOTED
- - CALCULATED SURVEY MONUMENT POSITION
- (C) - CALCULATED DIMENSION



Mark A. Hall Completed
Professional Land Surveyor Registration No. 36073 12/23/2010
State of Colorado
FOR AND ON BEHALF OF BASELINE ENGINEERING CORP.

JOB #: 15127