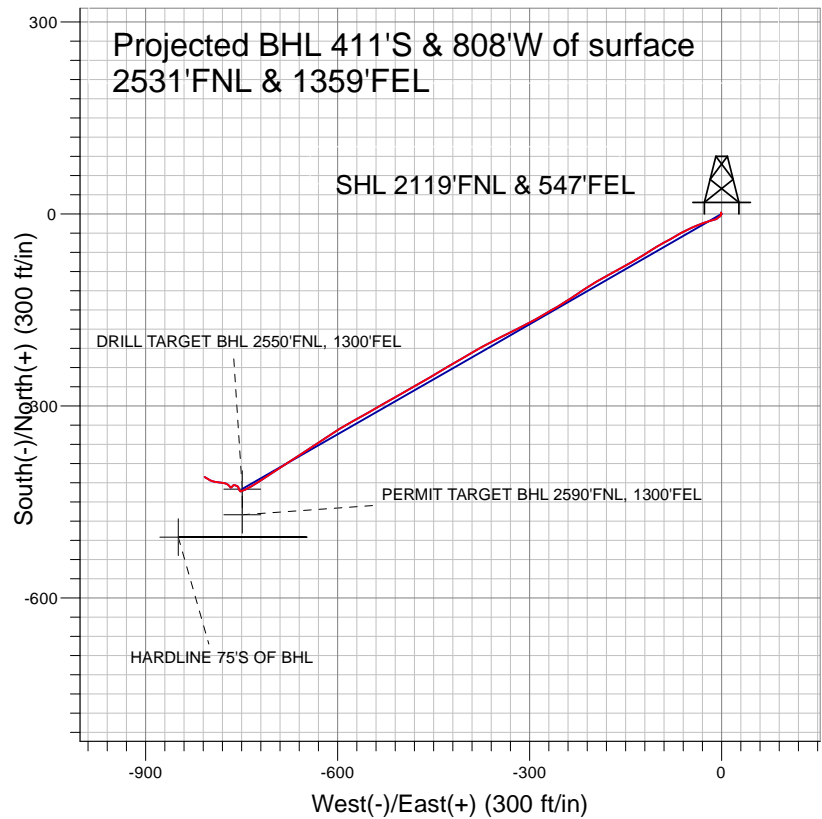





EnCana Oil & Gas Weld County CO



LEGEND

-  Davis 6-4-9, Wellbore #1, Plan #1 (5-20-10) V0
-  Wellbore #1
-  Survey #1

Final Survey Plot

Projected Final Survey -
8103'MD & 7997'TVD @ 905' VS
2.5 deg Inc 302.4 deg AZ

Project: SEC.9-T2N-R66W
Site: Davis 6-4-9 Pad Sec.9-T2N-R66W
Well: Davis 6-4-9
Plan: Wellbore #1



EnCana Oil & Gas Weld County CO

SEC.9-T2N-R66W

Davis 6-4-9 Pad Sec.9-T2N-R66W

Davis 6-4-9

Wellbore #1

Survey: Survey #1

Standard Survey Report

30 August, 2010

Company:	EnCana Oil & Gas Weld County CO	Local Co-ordinate Reference:	Well Davis 6-4-9
Project:	SEC.9-T2N-R66W	TVD Reference:	WELL @ 4945.0ft (Original Well Elev)
Site:	Davis 6-4-9 Pad Sec.9-T2N-R66W	MD Reference:	WELL @ 4945.0ft (Original Well Elev)
Well:	Davis 6-4-9	North Reference:	True
Wellbore:	Wellbore #1	Survey Calculation Method:	Minimum Curvature
Design:	Wellbore #1	Database:	EDM den0-adp01 Server Data

Project	SEC.9-T2N-R66W, Weld County, Colorado		
Map System:	US State Plane 1983	System Datum:	Mean Sea Level
Geo Datum:	North American Datum 1983		Using Well Reference Point
Map Zone:	Colorado Northern Zone		Using geodetic scale factor

Site		Davis 6-4-9 Pad Sec.9-T2N-R66W			
Site Position:		Northing:	1,299,774.50ft	Latitude:	40° 9' 14.400 N
From:	Lat/Long	Easting:	3,202,720.31 ft	Longitude:	104° 46' 29.100 W
Position Uncertainty:	0.0 ft	Slot Radius:	"	Grid Convergence:	0.47 °

Well	Davis 6-4-9					
Well Position	+N/-S	0.0 ft	Northing:	1,299,774.49 ft	Latitude:	40° 9' 14.400 N
	+E/-W	0.0 ft	Easting:	3,202,720.31 ft	Longitude:	104° 46' 29.100 W
Position Uncertainty		0.0 ft	Wellhead Elevation:	ft	Ground Level:	4,933.0 ft

Wellbore	Wellbore #1				
Magnetics	Model Name	Sample Date	Declination (°)	Dip Angle (°)	Field Strength (nT)
	IGRF2010	5/20/2010	8.99	66.89	53,113

Design	Wellbore #1				
Audit Notes:					
Version:	1.0	Phase:	ACTUAL	Tie On Depth:	0.0
Vertical Section:	Depth From (TVD) (ft)	+N/-S (ft)	+E/-W (ft)	Direction (°)	
	0.0	0.0	0.0	240.15	

Survey Program		Date	8/30/2010		
From (ft)	To (ft)	Survey (Wellbore)	Tool Name	Description	
153.0	8,103.0	Survey #1 (Wellbore #1)	MWD	MWD - Standard	

Survey	Wellbore Data									
	Measured Depth (ft)	Inclination (°)	Azimuth (°)	Vertical Depth (ft)	+N/-S (ft)	+E/-W (ft)	Vertical Section (ft)	Dogleg Rate (°/100ft)	Build Rate (°/100ft)	Turn Rate (°/100ft)
Main Wellbore	0.0	0.00	0.00	0.0	0.0	0.0	0.0	0.00	0.00	0.00
	153.0	1.00	327.90	153.0	1.1	-0.7	0.1	0.65	0.65	0.00
	243.0	0.40	348.90	243.0	2.1	-1.2	0.0	0.71	-0.67	23.33
	335.0	0.40	169.30	335.0	2.1	-1.2	0.0	0.87	0.00	-195.22
	426.0	0.40	191.20	426.0	1.5	-1.2	0.3	0.17	0.00	24.07
	517.0	1.30	176.20	517.0	0.1	-1.2	1.0	1.01	0.99	-16.48
	609.0	1.40	194.00	608.9	-2.0	-1.4	2.2	0.47	0.11	19.35
	701.0	1.10	243.80	700.9	-3.5	-2.5	3.9	1.18	-0.33	54.13
	794.0	1.30	227.50	793.9	-4.6	-4.0	5.8	0.42	0.22	-17.53
	887.0	1.40	233.70	886.9	-6.0	-5.7	7.9	0.19	0.11	6.67
	963.0	1.50	234.80	962.9	-7.1	-7.3	9.8	0.14	0.13	1.45
	1,057.0	2.80	249.80	1,056.8	-8.6	-10.4	13.3	1.50	1.38	15.96
	1,153.0	5.00	253.40	1,152.6	-10.6	-16.7	19.7	2.30	2.29	3.75

Company:	EnCana Oil & Gas Weld County CO	Local Co-ordinate Reference:	Well Davis 6-4-9
Project:	SEC.9-T2N-R66W	TVD Reference:	WELL @ 4945.0ft (Original Well Elev)
Site:	Davis 6-4-9 Pad Sec.9-T2N-R66W	MD Reference:	WELL @ 4945.0ft (Original Well Elev)
Well:	Davis 6-4-9	North Reference:	True
Wellbore:	Wellbore #1	Survey Calculation Method:	Minimum Curvature
Design:	Wellbore #1	Database:	EDM den0-adp01 Server Data

Survey

Measured Depth (ft)	Inclination (°)	Azimuth (°)	Vertical Depth (ft)	+N/-S (ft)	+E/-W (ft)	Vertical Section (ft)	Dogleg Rate (°/100ft)	Build Rate (°/100ft)	Turn Rate (°/100ft)
1,247.0	7.00	253.20	1,246.0	-13.4	-26.1	29.3	2.13	2.13	-0.21
1,342.0	9.10	246.60	1,340.1	-18.1	-38.5	42.4	2.41	2.21	-6.95
1,436.0	10.90	245.00	1,432.7	-24.8	-53.4	58.6	1.94	1.91	-1.70
1,531.0	13.10	240.10	1,525.6	-34.0	-70.9	78.4	2.55	2.32	-5.16
1,625.0	14.90	241.40	1,616.8	-45.0	-90.7	101.1	1.94	1.91	1.38
1,719.0	15.20	237.50	1,707.6	-57.5	-111.7	125.5	1.12	0.32	-4.15
1,814.0	14.50	238.60	1,799.4	-70.3	-132.4	149.8	0.79	-0.74	1.16
1,908.0	14.50	240.50	1,890.4	-82.3	-152.7	173.3	0.51	0.00	2.02
2,003.0	15.10	243.00	1,982.3	-93.7	-174.0	197.6	0.92	0.63	2.63
2,097.0	14.50	239.20	2,073.1	-105.3	-195.0	221.6	1.21	-0.64	-4.04
2,191.0	14.70	236.30	2,164.1	-118.0	-215.1	245.3	0.81	0.21	-3.09
2,287.0	14.80	236.50	2,256.9	-131.5	-235.4	269.7	0.12	0.10	0.21
2,381.0	15.80	239.10	2,347.6	-144.7	-256.4	294.4	1.29	1.06	2.77
2,476.0	14.60	240.30	2,439.3	-157.3	-277.9	319.3	1.31	-1.26	1.26
2,570.0	14.50	240.80	2,530.3	-168.9	-298.5	342.9	0.17	-0.11	0.53
2,664.0	14.50	244.40	2,621.3	-179.7	-319.4	366.5	0.96	0.00	3.83
2,759.0	15.20	243.30	2,713.1	-190.4	-341.2	390.7	0.79	0.74	-1.16
2,853.0	15.60	242.00	2,803.7	-201.9	-363.4	415.7	0.56	0.43	-1.38
2,948.0	16.00	240.20	2,895.1	-214.4	-386.0	441.5	0.67	0.42	-1.89
3,042.0	15.50	239.90	2,985.6	-227.2	-408.1	467.1	0.54	-0.53	-0.32
3,136.0	14.90	239.30	3,076.3	-239.6	-429.4	491.7	0.66	-0.64	-0.64
3,231.0	14.30	239.40	3,168.3	-251.8	-450.0	515.6	0.63	-0.63	0.11
3,325.0	14.70	239.70	3,259.3	-263.8	-470.3	539.2	0.43	0.43	0.32
3,420.0	14.10	241.10	3,351.3	-275.4	-490.8	562.8	0.73	-0.63	1.47
3,514.0	14.10	239.90	3,442.4	-286.7	-510.8	585.7	0.31	0.00	-1.28
3,609.0	15.30	240.10	3,534.3	-298.8	-531.6	609.8	1.26	1.26	0.21
3,703.0	15.80	241.20	3,624.9	-311.1	-553.6	635.0	0.62	0.53	1.17
3,797.0	15.10	241.10	3,715.5	-323.2	-575.5	660.0	0.75	-0.74	-0.11
3,892.0	14.80	238.50	3,807.3	-335.5	-596.7	684.5	0.77	-0.32	-2.74
3,986.0	15.10	235.20	3,898.1	-348.8	-617.0	708.7	0.96	0.32	-3.51
4,081.0	15.30	237.70	3,989.8	-362.5	-637.8	733.6	0.72	0.21	2.63
4,175.0	16.00	236.00	4,080.3	-376.4	-659.0	758.9	0.89	0.74	-1.81
4,269.0	14.80	237.30	4,170.9	-390.1	-679.8	783.8	1.33	-1.28	1.38
4,364.0	12.30	237.20	4,263.3	-402.2	-698.6	806.0	2.63	-2.63	-0.11
4,458.0	9.30	236.50	4,355.6	-411.8	-713.3	823.6	3.19	-3.19	-0.74
4,554.0	7.60	237.50	4,450.5	-419.5	-725.1	837.7	1.78	-1.77	1.04
4,648.0	6.10	239.00	4,543.9	-425.4	-734.7	848.9	1.61	-1.60	1.60
4,742.0	4.20	244.30	4,637.5	-429.5	-742.0	857.3	2.08	-2.02	5.64
4,837.0	3.00	245.90	4,732.3	-432.0	-747.4	863.3	1.27	-1.26	1.68
4,931.0	1.20	249.20	4,826.2	-433.3	-750.6	866.7	1.92	-1.91	3.51
5,026.0	0.70	268.60	4,921.2	-433.7	-752.1	868.2	0.62	-0.53	20.42
5,104.6	0.64	326.97	4,999.8	-433.4	-752.8	868.6	0.83	-0.08	74.30
PERMIT TARGET BHL 2590'FNL, 1300'FEL									
5,104.8	0.64	326.97	5,000.0	-433.3	-752.8	868.6	0.00	0.00	0.00
DRILL TARGET BHL 2550'FNL, 1300'FEL									
5,120.0	0.70	336.60	5,015.2	-433.2	-752.9	868.6	0.85	0.41	63.40
5,215.0	1.10	343.60	5,110.2	-431.8	-753.4	868.4	0.44	0.42	7.37
5,309.0	0.50	303.90	5,204.2	-430.7	-754.0	868.3	0.83	-0.64	-42.23
5,403.0	0.40	315.10	5,298.2	-430.2	-754.6	868.6	0.14	-0.11	11.91
5,498.0	0.40	357.00	5,393.2	-429.7	-754.8	868.5	0.30	0.00	44.11
5,592.0	0.30	351.90	5,487.2	-429.1	-754.9	868.3	0.11	-0.11	-5.43
5,687.0	0.40	344.60	5,582.2	-428.5	-755.0	868.1	0.12	0.11	-7.68
5,781.0	0.60	347.60	5,676.2	-427.7	-755.2	867.9	0.21	0.21	3.19
5,875.0	0.60	328.50	5,770.2	-426.8	-755.6	867.8	0.21	0.00	-20.32

Company:	EnCana Oil & Gas Weld County CO	Local Co-ordinate Reference:	Well Davis 6-4-9
Project:	SEC.9-T2N-R66W	TVD Reference:	WELL @ 4945.0ft (Original Well Elev)
Site:	Davis 6-4-9 Pad Sec.9-T2N-R66W	MD Reference:	WELL @ 4945.0ft (Original Well Elev)
Well:	Davis 6-4-9	North Reference:	True
Wellbore:	Wellbore #1	Survey Calculation Method:	Minimum Curvature
Design:	Wellbore #1	Database:	EDM den0-adp01 Server Data

Survey

Measured Depth (ft)	Inclination (°)	Azimuth (°)	Vertical Depth (ft)	+N/-S (ft)	+E/-W (ft)	Vertical Section (ft)	Dogleg Rate (°/100ft)	Build Rate (°/100ft)	Turn Rate (°/100ft)
5,970.0	0.50	316.30	5,865.2	-426.1	-756.1	867.9	0.16	-0.11	-12.84
6,065.0	0.50	302.20	5,960.2	-425.6	-756.7	868.2	0.13	0.00	-14.84
6,160.0	0.20	308.60	6,055.2	-425.3	-757.2	868.4	0.32	-0.32	6.74
6,252.0	0.20	271.10	6,147.2	-425.2	-757.5	868.6	0.14	0.00	-40.76
6,347.0	0.30	264.60	6,242.2	-425.2	-757.9	869.0	0.11	0.11	-6.84
6,442.0	0.40	304.40	6,337.2	-425.0	-758.4	869.4	0.27	0.11	41.89
6,536.0	0.60	306.70	6,431.2	-424.5	-759.1	869.7	0.21	0.21	2.45
6,631.0	0.50	290.00	6,526.2	-424.1	-759.9	870.2	0.20	-0.11	-17.58
6,726.0	0.50	287.50	6,621.1	-423.8	-760.7	870.7	0.02	0.00	-2.63
6,820.0	0.90	273.70	6,715.1	-423.7	-761.8	871.6	0.46	0.43	-14.68
6,915.0	1.80	223.40	6,810.1	-424.7	-763.6	873.7	1.48	0.95	-52.95
7,009.0	2.20	231.20	6,904.1	-426.9	-766.0	876.9	0.51	0.43	8.30
7,104.0	0.40	345.10	6,999.0	-427.7	-767.5	878.6	2.52	-1.89	119.89
7,198.0	1.00	312.00	7,093.0	-426.9	-768.2	878.7	0.74	0.64	-35.21
7,293.0	1.20	329.50	7,188.0	-425.4	-769.3	879.0	0.41	0.21	18.42
7,387.0	3.00	308.40	7,281.9	-423.1	-771.7	879.9	2.05	1.91	-22.45
7,481.0	3.80	282.20	7,375.8	-420.9	-776.7	883.2	1.84	0.85	-27.87
7,576.0	4.30	277.90	7,470.5	-419.7	-783.3	888.3	0.62	0.53	-4.53
7,670.0	3.20	275.70	7,564.3	-419.0	-789.4	893.2	1.18	-1.17	-2.34
7,765.0	2.90	286.30	7,659.2	-418.0	-794.4	897.1	0.67	-0.32	11.16
7,859.0	2.60	295.20	7,753.1	-416.5	-798.6	899.9	0.55	-0.32	9.47
7,953.0	2.50	301.30	7,847.0	-414.5	-802.3	902.1	0.31	-0.11	6.49
8,048.0	2.50	298.40	7,941.9	-412.4	-805.9	904.2	0.13	0.00	-3.05
8,058.0	2.50	302.40	7,951.9	-412.2	-806.2	904.4	1.74	0.00	40.00
8,103.0	2.50	302.40	7,996.9	-411.2	-807.9	905.4	0.00	0.00	0.00
HARDLINE 75'S OF BHL									

Wellbore Targets

Target Name	- hit/miss target	- Shape	Dip Angle (°)	Dip Dir. (°)	TVD (ft)	+N/-S (ft)	+E/-W (ft)	Northing (ft)	Easting (ft)	Latitude	Longitude
PERMIT TARGET BH			0.00	0.00	5,000.0	-469.9	-749.2	1,299,298.48	3,201,975.05	40° 9' 9.756 N	104° 46' 38.748 W
- survey misses target center by 36.8ft at 5104.6ft MD (4999.8 TVD, -433.4 N, -752.8 E)											
- Point											
DRILL TARGET BHL			0.00	0.00	5,000.0	-429.9	-749.2	1,299,338.50	3,201,974.69	40° 9' 10.151 N	104° 46' 38.748 W
- survey misses target center by 5.0ft at 5104.8ft MD (5000.0 TVD, -433.3 N, -752.8 E)											
- Point											
HARDLINE 75'S OF E			0.00	0.00	7,999.0	-504.9	-849.2	1,299,262.68	3,201,875.31	40° 9' 9.410 N	104° 46' 40.036 W
- survey misses target center by 102.5ft at 8103.0ft MD (7996.9 TVD, -411.2 N, -807.9 E)											
- Polygon											
Point 1					7,999.0	0.0	0.0	1,299,262.68	3,201,875.31		
Point 2					7,999.0	0.0	200.0	1,299,264.32	3,202,075.29		

Checked By: _____ Approved By: _____ Date: _____