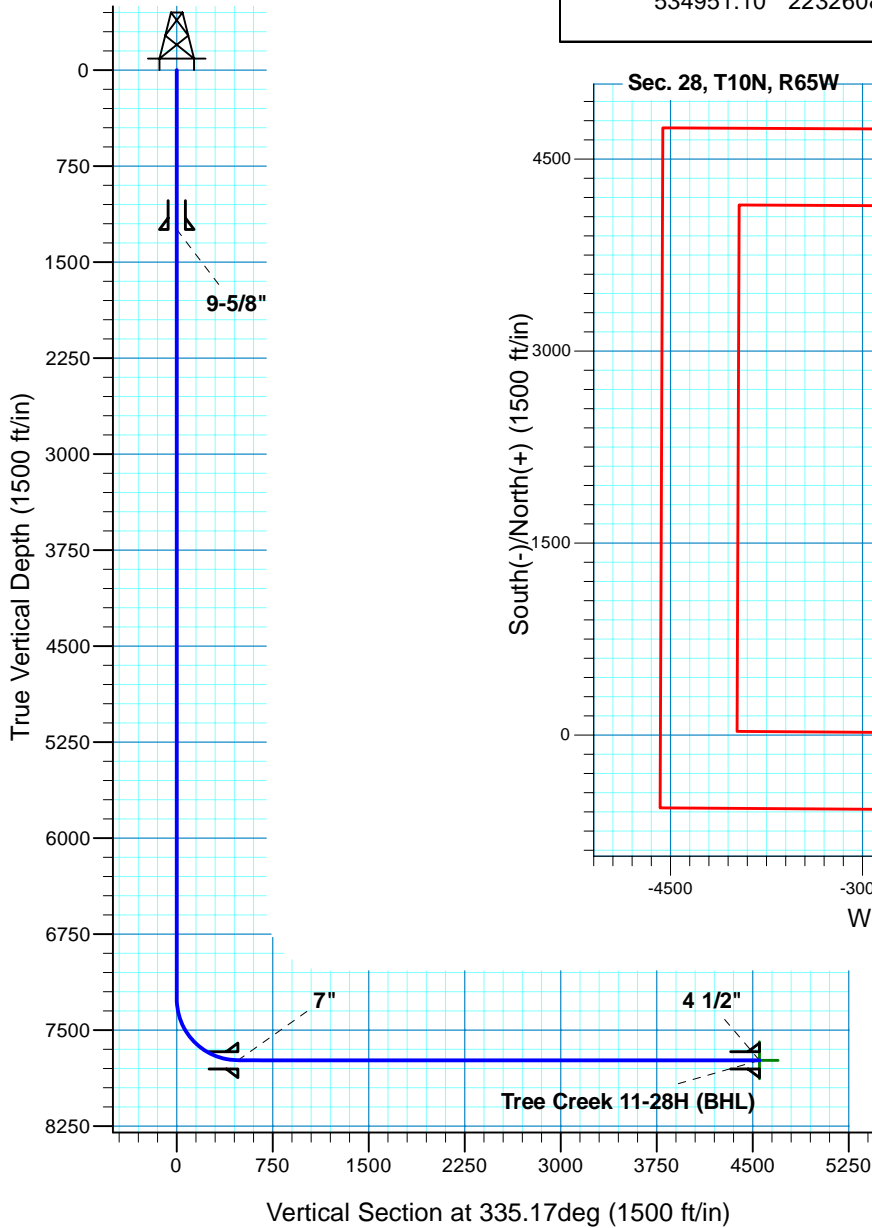


Tree Creek 11-28H
Section 28 T10N R65W
Weld County, CO

Surface Location

NAD 1927 (NADCON CONUS) Colorado North 501
Ground Elevation: 5243.00 RIG @ 5265.00ft (TBD)
Northing Easting Latitude Longitude
534951.10 2232608.01 40° 47' 55.770 N 104° 39' 35.572 W



T M
Azimuths to True North
Magnetic North: 8.86°
Magnetic Field
Strength: 53416.9nT
Dip Angle: 67.41°
Date: 12/27/2010
Model: IGRF200510

Project: DJ - Hereford Ranch
Site: Tree Creek 11-28H
Well: Tree Creek 11-28H
Plan: APD Directional Plan

SECTION DETAILS

Sec	MD	Inc	Azi	TVD	+N/-S	+E/-W	DLeg	TFace	VSec	Target
1	0.00	0.00	0.00	0.00	0.00	0.00	0.00	0.00	0.00	
2	7257.53	0.00	0.00	7257.53	0.00	0.00	0.00	0.00	0.00	
3	8007.54	90.00	335.17	7735.00	433.33	-200.50	12.00	335.17	477.47	
4	12082.12	90.00	335.17	7735.00	4131.25	-1911.53	0.00	0.00	4552.05	Tree Creek 11-28H (BHL)

TARGET DETAILS

Name	TVD	+N/-S	+E/-W	Northing	Easting	Latitude	Longitude	Shape
Tree Creek 11-28H (BHL)	7735.00	4131.25	-1911.53	539064.05	2230657.43	40° 48' 36.590 N	104° 40' 0.430 W	Point

Denver Division- Colorado

DJ - Hereford Ranch

Tree Creek 11-28H

Tree Creek 11-28H

Original Wellbore

Plan: APD Directional Plan

Standard Planning Report

27 December, 2010

EOG Resources Inc

Planning Report

Database:	EDM	Local Co-ordinate Reference:	Site Tree Creek 11-28H
Company:	Denver Division- Colorado	TVD Reference:	RIG @ 5265.00ft (TBD)
Project:	DJ - Hereford Ranch	MD Reference:	RIG @ 5265.00ft (TBD)
Site:	Tree Creek 11-28H	North Reference:	True
Well:	Tree Creek 11-28H	Survey Calculation Method:	Minimum Curvature
Wellbore:	Original Wellbore		
Design:	APD Directional Plan		

Project	DJ - Hereford Ranch, Weld County		
Map System:	US State Plane 1927 (Exact solution)	System Datum:	Mean Sea Level
Geo Datum:	NAD 1927 (NADCON CONUS)		
Map Zone:	Colorado North 501		

Site		Tree Creek 11-28H				
Site Position:		Northing:	534,951.10ft	Latitude:	40° 47' 55.770 N	
From:	Lat/Long	Easting:	2,232,608.01ft	Longitude:	104° 39' 35.572 W	
Position Uncertainty:		0.00 ft	Slot Radius:	"	Grid Convergence:	0.54 deg

Well	Tree Creek 11-28H					
Well Position	+N/-S	0.00 ft	Northing:	534,951.10 ft	Latitude:	40° 47' 55.770 N
	+E/-W	0.00 ft	Easting:	2,232,608.01 ft	Longitude:	104° 39' 35.572 W
Position Uncertainty		0.00 ft	Wellhead Elevation:	ft	Ground Level:	5,243.00 ft

Wellbore	Original Wellbore				
Magnetics	Model Name	Sample Date	Declination (deg)	Dip Angle (deg)	Field Strength (nT)
	IGRF200510	12/27/2010	8.86	67.41	53,417

Design	APD Directional Plan			
Audit Notes:				
Version:	Phase:	PROTOTYPE	Tie On Depth:	0.00
Vertical Section:	Depth From (TVD) (ft)	+N/-S (ft)	+E/-W (ft)	Direction (deg)
	0.00	0.00	0.00	335.17

Plan Sections										
Measured Depth (ft)	Inclination (deg)	Azimuth (deg)	Vertical Depth (ft)	+N/-S (ft)	+E/-W (ft)	Dogleg Rate (?/100ft)	Build Rate (?/100ft)	Turn Rate (?/100ft)	TFO (deg)	Target
0.00	0.00	0.00	0.00	0.00	0.00	0.00	0.00	0.00	0.00	
7,257.53	0.00	0.00	7,257.53	0.00	0.00	0.00	0.00	0.00	0.00	
8,007.54	90.00	335.17	7,735.00	433.33	-200.50	12.00	12.00	0.00	335.17	
12,082.12	90.00	335.17	7,735.00	4,131.25	-1,911.53	0.00	0.00	0.00	0.00	Tree Creek 11-28H

EOG Resources Inc

Planning Report

Database:	EDM	Local Co-ordinate Reference:	Site Tree Creek 11-28H
Company:	Denver Division- Colorado	TVD Reference:	RIG @ 5265.00ft (TBD)
Project:	DJ - Hereford Ranch	MD Reference:	RIG @ 5265.00ft (TBD)
Site:	Tree Creek 11-28H	North Reference:	True
Well:	Tree Creek 11-28H	Survey Calculation Method:	Minimum Curvature
Wellbore:	Original Wellbore		
Design:	APD Directional Plan		

Planned Survey

Measured Depth (ft)	Inclination (deg)	Azimuth (deg)	Vertical Depth (ft)	+N/-S (ft)	+E/-W (ft)	Vertical Section (ft)	Dogleg Rate (?/100ft)	Build Rate (?/100ft)	Turn Rate (?/100ft)
0.00	0.00	0.00	0.00	0.00	0.00	0.00	0.00	0.00	0.00
100.00	0.00	0.00	100.00	0.00	0.00	0.00	0.00	0.00	0.00
200.00	0.00	0.00	200.00	0.00	0.00	0.00	0.00	0.00	0.00
300.00	0.00	0.00	300.00	0.00	0.00	0.00	0.00	0.00	0.00
400.00	0.00	0.00	400.00	0.00	0.00	0.00	0.00	0.00	0.00
500.00	0.00	0.00	500.00	0.00	0.00	0.00	0.00	0.00	0.00
600.00	0.00	0.00	600.00	0.00	0.00	0.00	0.00	0.00	0.00
700.00	0.00	0.00	700.00	0.00	0.00	0.00	0.00	0.00	0.00
800.00	0.00	0.00	800.00	0.00	0.00	0.00	0.00	0.00	0.00
900.00	0.00	0.00	900.00	0.00	0.00	0.00	0.00	0.00	0.00
1,000.00	0.00	0.00	1,000.00	0.00	0.00	0.00	0.00	0.00	0.00
1,100.00	0.00	0.00	1,100.00	0.00	0.00	0.00	0.00	0.00	0.00
1,200.00	0.00	0.00	1,200.00	0.00	0.00	0.00	0.00	0.00	0.00
1,245.00	0.00	0.00	1,245.00	0.00	0.00	0.00	0.00	0.00	0.00
9-5/8"									
1,300.00	0.00	0.00	1,300.00	0.00	0.00	0.00	0.00	0.00	0.00
1,400.00	0.00	0.00	1,400.00	0.00	0.00	0.00	0.00	0.00	0.00
1,500.00	0.00	0.00	1,500.00	0.00	0.00	0.00	0.00	0.00	0.00
1,600.00	0.00	0.00	1,600.00	0.00	0.00	0.00	0.00	0.00	0.00
1,700.00	0.00	0.00	1,700.00	0.00	0.00	0.00	0.00	0.00	0.00
1,800.00	0.00	0.00	1,800.00	0.00	0.00	0.00	0.00	0.00	0.00
1,900.00	0.00	0.00	1,900.00	0.00	0.00	0.00	0.00	0.00	0.00
2,000.00	0.00	0.00	2,000.00	0.00	0.00	0.00	0.00	0.00	0.00
2,100.00	0.00	0.00	2,100.00	0.00	0.00	0.00	0.00	0.00	0.00
2,200.00	0.00	0.00	2,200.00	0.00	0.00	0.00	0.00	0.00	0.00
2,300.00	0.00	0.00	2,300.00	0.00	0.00	0.00	0.00	0.00	0.00
2,400.00	0.00	0.00	2,400.00	0.00	0.00	0.00	0.00	0.00	0.00
2,500.00	0.00	0.00	2,500.00	0.00	0.00	0.00	0.00	0.00	0.00
2,600.00	0.00	0.00	2,600.00	0.00	0.00	0.00	0.00	0.00	0.00
2,700.00	0.00	0.00	2,700.00	0.00	0.00	0.00	0.00	0.00	0.00
2,800.00	0.00	0.00	2,800.00	0.00	0.00	0.00	0.00	0.00	0.00
2,900.00	0.00	0.00	2,900.00	0.00	0.00	0.00	0.00	0.00	0.00
3,000.00	0.00	0.00	3,000.00	0.00	0.00	0.00	0.00	0.00	0.00
3,100.00	0.00	0.00	3,100.00	0.00	0.00	0.00	0.00	0.00	0.00
3,200.00	0.00	0.00	3,200.00	0.00	0.00	0.00	0.00	0.00	0.00
3,300.00	0.00	0.00	3,300.00	0.00	0.00	0.00	0.00	0.00	0.00
3,400.00	0.00	0.00	3,400.00	0.00	0.00	0.00	0.00	0.00	0.00
3,500.00	0.00	0.00	3,500.00	0.00	0.00	0.00	0.00	0.00	0.00
3,600.00	0.00	0.00	3,600.00	0.00	0.00	0.00	0.00	0.00	0.00
3,700.00	0.00	0.00	3,700.00	0.00	0.00	0.00	0.00	0.00	0.00
3,800.00	0.00	0.00	3,800.00	0.00	0.00	0.00	0.00	0.00	0.00
3,900.00	0.00	0.00	3,900.00	0.00	0.00	0.00	0.00	0.00	0.00
4,000.00	0.00	0.00	4,000.00	0.00	0.00	0.00	0.00	0.00	0.00
4,100.00	0.00	0.00	4,100.00	0.00	0.00	0.00	0.00	0.00	0.00
4,200.00	0.00	0.00	4,200.00	0.00	0.00	0.00	0.00	0.00	0.00
4,300.00	0.00	0.00	4,300.00	0.00	0.00	0.00	0.00	0.00	0.00
4,400.00	0.00	0.00	4,400.00	0.00	0.00	0.00	0.00	0.00	0.00
4,500.00	0.00	0.00	4,500.00	0.00	0.00	0.00	0.00	0.00	0.00
4,600.00	0.00	0.00	4,600.00	0.00	0.00	0.00	0.00	0.00	0.00
4,700.00	0.00	0.00	4,700.00	0.00	0.00	0.00	0.00	0.00	0.00
4,800.00	0.00	0.00	4,800.00	0.00	0.00	0.00	0.00	0.00	0.00
4,900.00	0.00	0.00	4,900.00	0.00	0.00	0.00	0.00	0.00	0.00
5,000.00	0.00	0.00	5,000.00	0.00	0.00	0.00	0.00	0.00	0.00

EOG Resources Inc

Planning Report

Database:	EDM	Local Co-ordinate Reference:	Site Tree Creek 11-28H
Company:	Denver Division- Colorado	TVD Reference:	RIG @ 5265.00ft (TBD)
Project:	DJ - Hereford Ranch	MD Reference:	RIG @ 5265.00ft (TBD)
Site:	Tree Creek 11-28H	North Reference:	True
Well:	Tree Creek 11-28H	Survey Calculation Method:	Minimum Curvature
Wellbore:	Original Wellbore		
Design:	APD Directional Plan		

Planned Survey

Measured Depth (ft)	Inclination (deg)	Azimuth (deg)	Vertical Depth (ft)	+N/-S (ft)	+E/-W (ft)	Vertical Section (ft)	Dogleg Rate (?/100ft)	Build Rate (?/100ft)	Turn Rate (?/100ft)
5,100.00	0.00	0.00	5,100.00	0.00	0.00	0.00	0.00	0.00	0.00
5,200.00	0.00	0.00	5,200.00	0.00	0.00	0.00	0.00	0.00	0.00
5,300.00	0.00	0.00	5,300.00	0.00	0.00	0.00	0.00	0.00	0.00
5,400.00	0.00	0.00	5,400.00	0.00	0.00	0.00	0.00	0.00	0.00
5,500.00	0.00	0.00	5,500.00	0.00	0.00	0.00	0.00	0.00	0.00
5,600.00	0.00	0.00	5,600.00	0.00	0.00	0.00	0.00	0.00	0.00
5,700.00	0.00	0.00	5,700.00	0.00	0.00	0.00	0.00	0.00	0.00
5,800.00	0.00	0.00	5,800.00	0.00	0.00	0.00	0.00	0.00	0.00
5,900.00	0.00	0.00	5,900.00	0.00	0.00	0.00	0.00	0.00	0.00
6,000.00	0.00	0.00	6,000.00	0.00	0.00	0.00	0.00	0.00	0.00
6,100.00	0.00	0.00	6,100.00	0.00	0.00	0.00	0.00	0.00	0.00
6,200.00	0.00	0.00	6,200.00	0.00	0.00	0.00	0.00	0.00	0.00
6,300.00	0.00	0.00	6,300.00	0.00	0.00	0.00	0.00	0.00	0.00
6,400.00	0.00	0.00	6,400.00	0.00	0.00	0.00	0.00	0.00	0.00
6,500.00	0.00	0.00	6,500.00	0.00	0.00	0.00	0.00	0.00	0.00
6,600.00	0.00	0.00	6,600.00	0.00	0.00	0.00	0.00	0.00	0.00
6,700.00	0.00	0.00	6,700.00	0.00	0.00	0.00	0.00	0.00	0.00
6,800.00	0.00	0.00	6,800.00	0.00	0.00	0.00	0.00	0.00	0.00
6,900.00	0.00	0.00	6,900.00	0.00	0.00	0.00	0.00	0.00	0.00
7,000.00	0.00	0.00	7,000.00	0.00	0.00	0.00	0.00	0.00	0.00
7,100.00	0.00	0.00	7,100.00	0.00	0.00	0.00	0.00	0.00	0.00
7,200.00	0.00	0.00	7,200.00	0.00	0.00	0.00	0.00	0.00	0.00
7,257.53	0.00	0.00	7,257.53	0.00	0.00	0.00	0.00	0.00	0.00
7,300.00	5.10	335.17	7,299.94	1.71	-0.79	1.89	12.00	12.00	0.00
7,400.00	17.10	335.17	7,397.90	19.15	-8.86	21.10	12.00	12.00	0.00
7,500.00	29.10	335.17	7,489.71	54.68	-25.30	60.25	12.00	12.00	0.00
7,600.00	41.10	335.17	7,571.38	106.77	-49.40	117.64	12.00	12.00	0.00
7,700.00	53.10	335.17	7,639.34	173.12	-80.10	190.76	12.00	12.00	0.00
7,800.00	65.10	335.17	7,690.60	250.85	-116.07	276.40	12.00	12.00	0.00
7,900.00	77.10	335.17	7,722.94	336.56	-155.72	370.84	12.00	12.00	0.00
8,000.00	89.10	335.17	7,734.94	426.49	-197.34	469.93	12.00	12.00	0.00
8,007.54	90.00	335.17	7,735.00	433.33	-200.50	477.47	11.99	11.99	0.00
7"									
8,100.00	90.00	335.17	7,735.00	517.24	-239.33	569.93	0.00	0.00	0.00
8,200.00	90.00	335.17	7,735.00	608.00	-281.32	669.93	0.00	0.00	0.00
8,300.00	90.00	335.17	7,735.00	698.76	-323.32	769.93	0.00	0.00	0.00
8,400.00	90.00	335.17	7,735.00	789.51	-365.31	869.93	0.00	0.00	0.00
8,500.00	90.00	335.17	7,735.00	880.27	-407.30	969.93	0.00	0.00	0.00
8,600.00	90.00	335.17	7,735.00	971.02	-449.29	1,069.93	0.00	0.00	0.00
8,700.00	90.00	335.17	7,735.00	1,061.78	-491.29	1,169.93	0.00	0.00	0.00
8,800.00	90.00	335.17	7,735.00	1,152.53	-533.28	1,269.93	0.00	0.00	0.00
8,900.00	90.00	335.17	7,735.00	1,243.29	-575.27	1,369.93	0.00	0.00	0.00
9,000.00	90.00	335.17	7,735.00	1,334.05	-617.26	1,469.93	0.00	0.00	0.00
9,100.00	90.00	335.17	7,735.00	1,424.80	-659.26	1,569.93	0.00	0.00	0.00
9,200.00	90.00	335.17	7,735.00	1,515.56	-701.25	1,669.93	0.00	0.00	0.00
9,300.00	90.00	335.17	7,735.00	1,606.31	-743.24	1,769.93	0.00	0.00	0.00
9,400.00	90.00	335.17	7,735.00	1,697.07	-785.24	1,869.93	0.00	0.00	0.00
9,500.00	90.00	335.17	7,735.00	1,787.82	-827.23	1,969.93	0.00	0.00	0.00
9,600.00	90.00	335.17	7,735.00	1,878.58	-869.22	2,069.93	0.00	0.00	0.00
9,700.00	90.00	335.17	7,735.00	1,969.34	-911.21	2,169.93	0.00	0.00	0.00
9,800.00	90.00	335.17	7,735.00	2,060.09	-953.21	2,269.93	0.00	0.00	0.00
9,900.00	90.00	335.17	7,735.00	2,150.85	-995.20	2,369.93	0.00	0.00	0.00
10,000.00	90.00	335.17	7,735.00	2,241.60	-1,037.19	2,469.93	0.00	0.00	0.00

EOG Resources Inc

Planning Report

Database:	EDM	Local Co-ordinate Reference:	Site Tree Creek 11-28H
Company:	Denver Division- Colorado	TVD Reference:	RIG @ 5265.00ft (TBD)
Project:	DJ - Hereford Ranch	MD Reference:	RIG @ 5265.00ft (TBD)
Site:	Tree Creek 11-28H	North Reference:	True
Well:	Tree Creek 11-28H	Survey Calculation Method:	Minimum Curvature
Wellbore:	Original Wellbore		
Design:	APD Directional Plan		

Planned Survey									
Measured Depth (ft)	Inclination (deg)	Azimuth (deg)	Vertical Depth (ft)	+N/-S (ft)	+E/-W (ft)	Vertical Section (ft)	Dogleg Rate (?/100ft)	Build Rate (?/100ft)	Turn Rate (?/100ft)
10,100.00	90.00	335.17	7,735.00	2,332.36	-1,079.19	2,569.93	0.00	0.00	0.00
10,200.00	90.00	335.17	7,735.00	2,423.11	-1,121.18	2,669.93	0.00	0.00	0.00
10,300.00	90.00	335.17	7,735.00	2,513.87	-1,163.17	2,769.93	0.00	0.00	0.00
10,400.00	90.00	335.17	7,735.00	2,604.63	-1,205.16	2,869.93	0.00	0.00	0.00
10,500.00	90.00	335.17	7,735.00	2,695.38	-1,247.16	2,969.93	0.00	0.00	0.00
10,600.00	90.00	335.17	7,735.00	2,786.14	-1,289.15	3,069.93	0.00	0.00	0.00
10,700.00	90.00	335.17	7,735.00	2,876.89	-1,331.14	3,169.93	0.00	0.00	0.00
10,800.00	90.00	335.17	7,735.00	2,967.65	-1,373.14	3,269.93	0.00	0.00	0.00
10,900.00	90.00	335.17	7,735.00	3,058.41	-1,415.13	3,369.93	0.00	0.00	0.00
11,000.00	90.00	335.17	7,735.00	3,149.16	-1,457.12	3,469.93	0.00	0.00	0.00
11,100.00	90.00	335.17	7,735.00	3,239.92	-1,499.11	3,569.93	0.00	0.00	0.00
11,200.00	90.00	335.17	7,735.00	3,330.67	-1,541.11	3,669.93	0.00	0.00	0.00
11,300.00	90.00	335.17	7,735.00	3,421.43	-1,583.10	3,769.93	0.00	0.00	0.00
11,400.00	90.00	335.17	7,735.00	3,512.18	-1,625.09	3,869.93	0.00	0.00	0.00
11,500.00	90.00	335.17	7,735.00	3,602.94	-1,667.08	3,969.93	0.00	0.00	0.00
11,600.00	90.00	335.17	7,735.00	3,693.70	-1,709.08	4,069.93	0.00	0.00	0.00
11,700.00	90.00	335.17	7,735.00	3,784.45	-1,751.07	4,169.93	0.00	0.00	0.00
11,800.00	90.00	335.17	7,735.00	3,875.21	-1,793.06	4,269.93	0.00	0.00	0.00
11,900.00	90.00	335.17	7,735.00	3,965.96	-1,835.06	4,369.93	0.00	0.00	0.00
12,000.00	90.00	335.17	7,735.00	4,056.72	-1,877.05	4,469.93	0.00	0.00	0.00
12,082.12	90.00	335.17	7,735.00	4,131.25	-1,911.53	4,552.05	0.00	0.00	0.00
4 1/2" - Tree Creek 11-28H (BHL)									

Targets									
Target Name	Dip Angle (deg)	Dip Dir. (deg)	TVD (ft)	+N/-S (ft)	+E/-W (ft)	Northing (ft)	Easting (ft)	Latitude	Longitude
- hit/miss target									
- Shape									
Tree Creek 11-28H (B	0.00	0.00	7,735.00	4,131.25	-1,911.53	539,064.05	2,230,657.43	40° 48' 36.590 N	104° 40' 0.430 W
- plan hits target center									
- Point									

Casing Points					
Measured Depth (ft)	Vertical Depth (ft)	Name	Casing Diameter (")	Hole Diameter (")	
1,245.00	1,245.00	9-5/8"	9-5/8	13-1/2	
8,007.54	7,735.00	7"	7	8-3/4	
12,082.12	7,735.00	4 1/2"	4-1/2	6	