

2010 UELS Alum.
Cap, 0.5' Below,
Road, Rebar
Lat: 40.757761°
Long: 104.049653°

T9N, R60W, 6th. P.M.

R
60
W

R
59
W

EOG RESOURCES, INC.

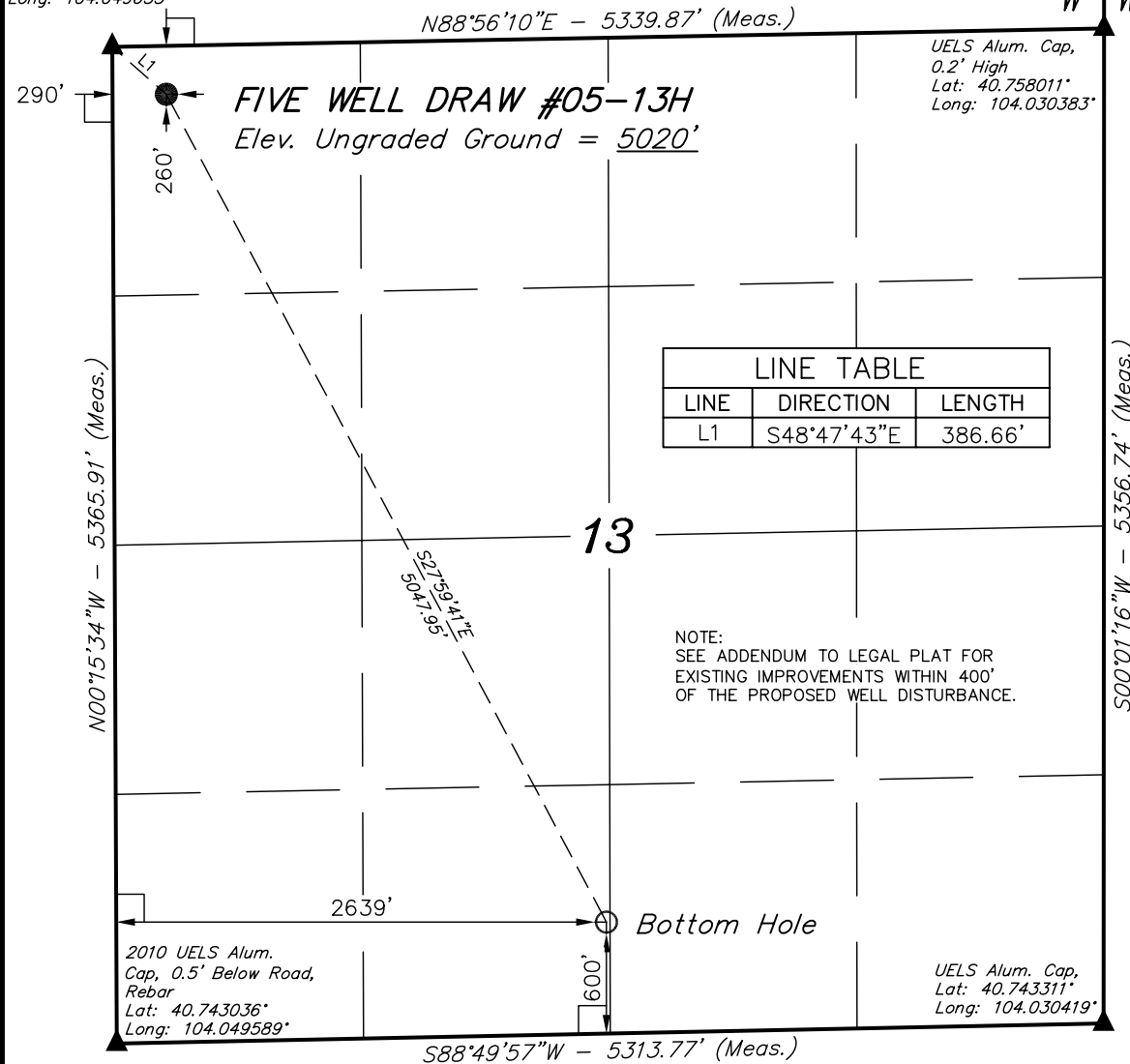
Well location, FIVE WELL DRAW #05-13H, located as shown in the NW 1/4 NW 1/4 of Section 13, T9N, R60W, 6th. P.M., Weld County, Colorado.

BASIS OF ELEVATION

SPOT ELEVATION LOCATED AT THE NORTHEAST CORNER OF SECTION 2, T9N, R61W, 6th P.M. TAKEN FROM THE GROVER SOUTH, QUADRANGLE, COLORADO, WELD COUNTY, 7.5 MINUTE QUAD (TOPOGRAPHIC MAP) PUBLISHED BY THE UNITED STATES DEPARTMENT OF THE INTERIOR, GEOLOGICAL SURVEY. SAID ELEVATION IS MARKED AS BEING 5043 FEET.

BASIS OF BEARINGS

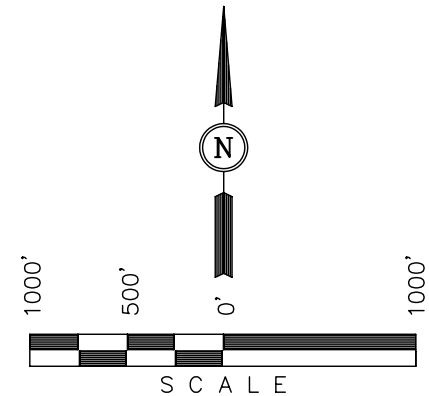
BASIS OF BEARINGS IS A G.P.S. OBSERVATION.



500°01'16\"W - 5356.74' (Meas.)

LINE TABLE		
LINE	DIRECTION	LENGTH
L1	S48°47'43\"E	386.66'

NOTE:
SEE ADDENDUM TO LEGAL PLAT FOR
EXISTING IMPROVEMENTS WITHIN 400'
OF THE PROPOSED WELL DISTURBANCE.



CERTIFICATE

THIS IS TO CERTIFY THAT THE ABOVE PLAT WAS PREPARED FROM FIELD NOTES OF ACTUAL SURVEYS MADE BY ME OR UNDER MY SUPERVISION AND THAT THE SAME ARE TRUE AND CORRECT TO THE BEST OF MY KNOWLEDGE AND BELIEF.

REGISTERED LAND SURVEYOR
REGISTRATION NO. 17492
STATE OF COLORADO

LEGEND:

- └─┘ = 90° SYMBOL
- = PROPOSED WELL HEAD.
- ▲ = SECTION CORNERS LOCATED.

NAD 83 (TARGET BOTTOM HOLE)	NAD 83 (SURFACE LOCATION)
LATITUDE = 40°44'41.35" (40.744819)	LATITUDE = 40°45'25.42" (40.757061)
LONGITUDE = 104°02'24.27" (104.040075)	LONGITUDE = 104°02'54.97" (104.048603)
NAD 27 (TARGET BOTTOM HOLE)	NAD 27 (SURFACE LOCATION)
LATITUDE = 40°44'41.40" (40.744833)	LATITUDE = 40°45'25.47" (40.757075)
LONGITUDE = 104°02'22.46" (104.039572)	LONGITUDE = 104°02'53.16" (104.048100)
STATE PLANE NAD 83 COLORADO NORTH	STATE PLANE NAD 83 COLORADO NORTH
N: 1517512.57 E: 3404517.74	N: 1521933.21 E: 3402082.07
STATE PLANE NAD 27 COLORADO NORTH	STATE PLANE NAD 27 COLORADO NORTH
N: 517510.60 E: 2404668.03	N: 521931.23 E: 2402232.26

PDOP = 1.5

UINTAH ENGINEERING & LAND SURVEYING
85 SOUTH 200 EAST - VERNAL, UTAH 84078
(435) 789-1017

SCALE 1" = 1000'	DATE SURVEYED: 12-6-10	DATE DRAWN: 12-28-10
PARTY G.M. J.R. J.I.	REFERENCES G.L.O. PLAT	
WEATHER COOL	FILE EOG RESOURCES, INC.	