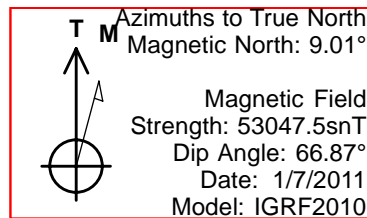


PROJECT DETAILS: COLORADO NORTHERN ZONE - 83	
Geodetic System:	US State Plane 1983
Datum:	North American Datum 1983
Ellipsoid:	GRS 1980
Zone:	Colorado Northern Zone
System Datum:	Mean Sea Level



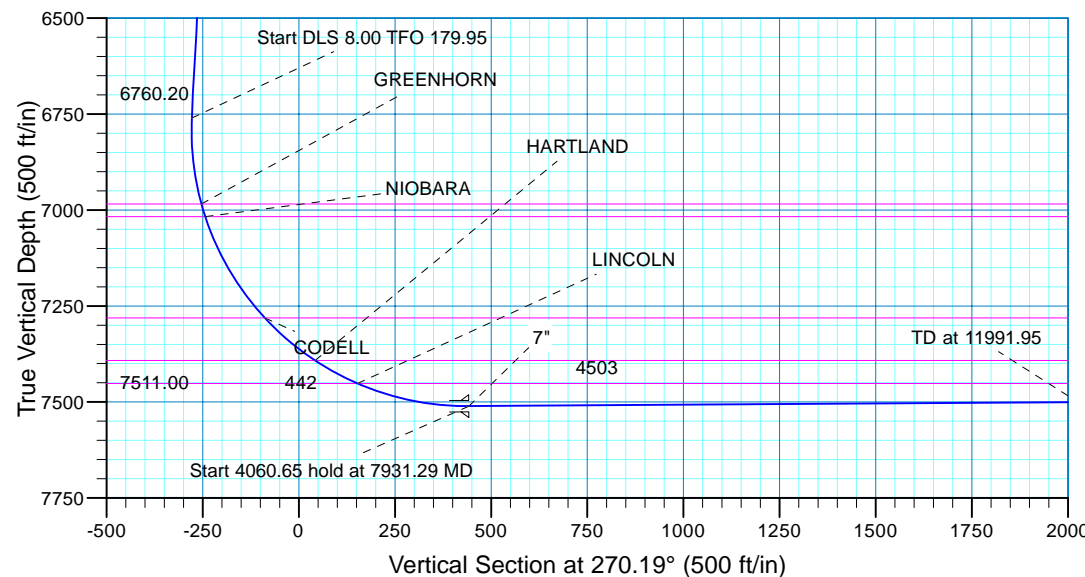
Project: COLORADO NORTHERN ZONE - 83
Site: WELD_DOUTHIT 32-26HZ
Well: DOUTHIT 32-26HZ
Wellbore: DOUTHIT 32-26HZ
Design: DOUTHIT 32-26HZ (wp02)

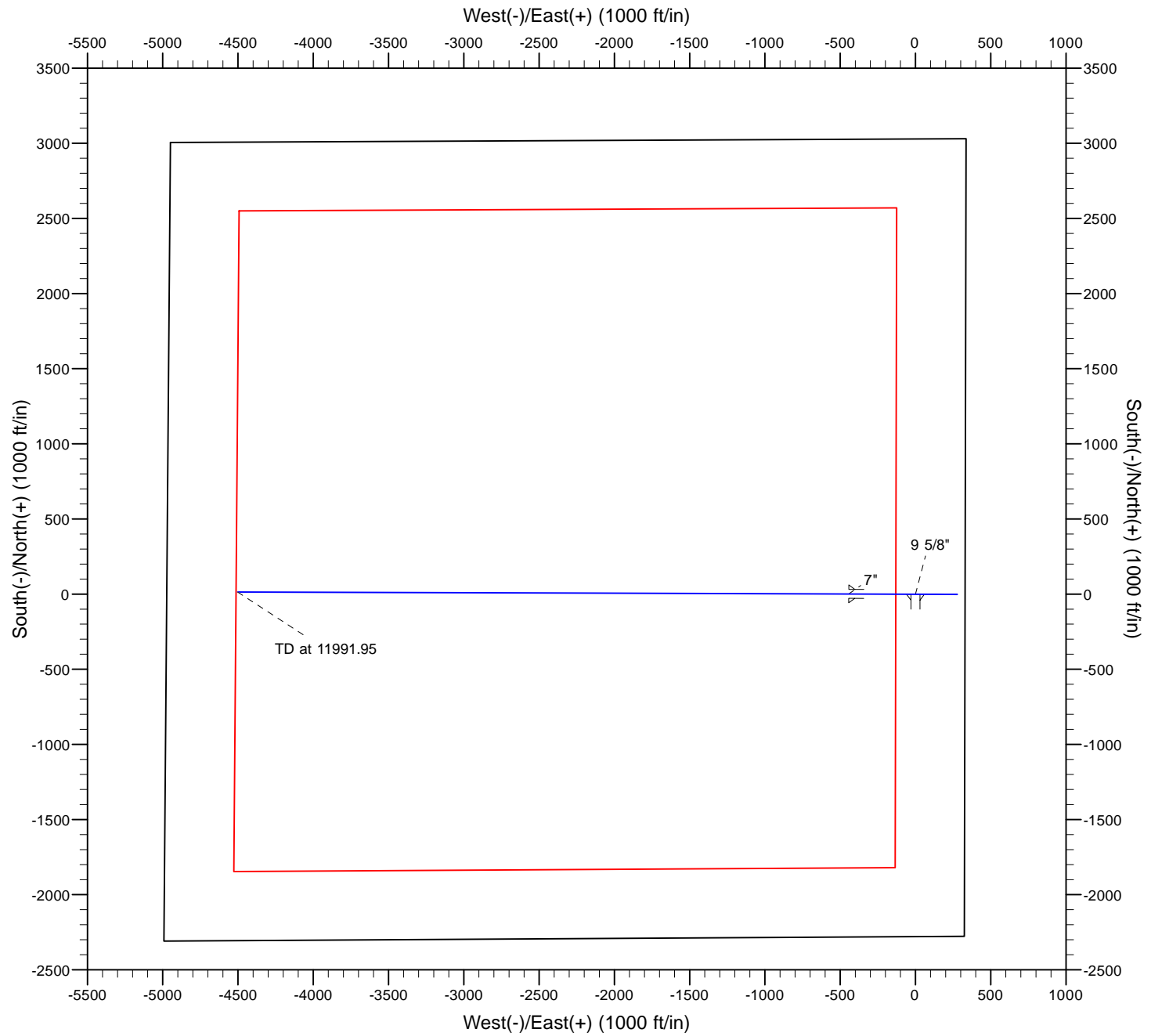
SECTION DETAILS										
MD	Inc	Azi	TVD	+N/-S	+E/-W	Dleg	TFace	VSeet	Target	
0.00	0.00	0.00	0.00	0.00	0.00	0.00	0.00	0.00		
950.00	0.00	0.00	950.00	0.00	0.00	0.00	0.00	0.00		
1088.54	2.77	90.24	1088.49	-0.01	3.35	2.00	90.24	-3.35		
6766.89	2.77	90.24	6760.20	-1.15	277.85	0.00	0.00	-277.85		
7931.29	90.38	270.19	7511.00	1.20	-442.27	8.00	179.95	442.27		
11991.95	90.38	270.19	7484.00	14.62	-4502.81	0.00	0.00	4502.84	DOUTHIT 32-26HZ BHL	

DESIGN TARGET DETAILS									
Name	TVD	+N/-S	+E/-W	Northing	Easting	Latitude	Longitude	Shape	
DOUTHIT 32-26HZ BHL	484.00	14.62	-4502.81	1314704.15	3145839.25	40.196081	-104.977927	Point	
- plan hits target center									

CASING DETAILS				
TVD	MD	Name	Size	
800.00	800.00	9 5/8"	9-5/8	
7511.00	7931.29	7"	7	

FORMATION TOP DETAILS		
TVDPath	MDPath	Formation
3696.00	3699.11	PARKMAN
4151.00	4154.64	SUSSEX
4626.00	4630.19	SHANNON
6984.00	6992.98	GREENHORN
7017.00	7027.43	NIOBARA
7281.00	7335.93	CODELL
7392.00	7507.69	HARTLAND
7452.00	7633.74	LINCOLN







US ROCKIES REGION PLANNING

Kerr McGee Onshore Oil & Gas

COLORADO NORTHERN ZONE - 83

WELD_DOUTHIT 32-26HZ

DOUTHIT 32-26HZ

DOUTHIT 32-26HZ

Plan: DOUTHIT 32-26HZ (wp02)

Standard Planning Report

11 January, 2011



APC Planning Report

Database:	edm5000p	Local Co-ordinate Reference:	Well DOUTHIT 32-26HZ
Company:	US ROCKIES REGION PLANNING	TVD Reference:	(17' RKB + 4934' GL) @ 4951.00ft
Project:	COLORADO NORTHERN ZONE - 83	MD Reference:	(17' RKB + 4934' GL) @ 4951.00ft
Site:	WELD_DOUTHIT 32-26HZ	North Reference:	True
Well:	DOUTHIT 32-26HZ	Survey Calculation Method:	Minimum Curvature
Wellbore:	DOUTHIT 32-26HZ		
Design:	DOUTHIT 32-26HZ (wp02)		

Project	COLORADO NORTHERN ZONE - 83		
Map System:	US State Plane 1983	System Datum:	Mean Sea Level
Geo Datum:	North American Datum 1983		
Map Zone:	Colorado Northern Zone		

Site						WELD_DOUTHIT 32-26HZ											
Site Position:						Northing:			1,314,716.86 ft			Latitude:			40.196042		
From:			Lat/Long			Easting:			3,150,342.07 ft			Longitude:			-104.961808		
Position Uncertainty:			0.00 ft			Slot Radius:			0 "			Grid Convergence:			0.35		

Well	DOUTHIT 32-26HZ					
Well Position	+N/-S	0.00 ft	Northing:	1,314,716.86 ft	Latitude:	40.196042
	+E/-W	0.00 ft	Easting:	3,150,342.07 ft	Longitude:	-104.961808
Position Uncertainty		0.00 ft	Wellhead Elevation:		Ground Level:	4,934.00 ft

Wellbore	DOUTHIT 32-26HZ				
Magnetics	Model Name	Sample Date	Declination (°)	Dip Angle (°)	Field Strength (nT)
	IGRF2010	1/7/2011	9.01	66.87	53,048

Design	DOUTHIT 32-26HZ (wp02)			
Audit Notes:				
Version:	Phase:	PLAN	Tie On Depth:	0.00
Vertical Section:	Depth From (TVD) (ft)	+N/-S (ft)	+E/-W (ft)	Direction (°)
	0.00	0.00	0.00	270.19

Plan Sections										
Measured Depth (ft)	Inclination (°)	Azimuth (°)	Vertical Depth (ft)	+N/-S (ft)	+E/-W (ft)	Dogleg Rate (°/100ft)	Build Rate (°/100ft)	Turn Rate (°/100ft)	TFO (°)	Target
0.00	0.00	0.00	0.00	0.00	0.00	0.00	0.00	0.00	0.00	
950.00	0.00	0.00	950.00	0.00	0.00	0.00	0.00	0.00	0.00	
1,088.54	2.77	90.24	1,088.49	-0.01	3.35	2.00	2.00	65.13	90.24	
6,766.89	2.77	90.24	6,760.20	-1.15	277.85	0.00	0.00	0.00	0.00	
7,931.29	90.38	270.19	7,511.00	1.20	-442.27	8.00	7.52	15.45	179.95	
11,991.95	90.38	270.19	7,484.00	14.62	-4,502.81	0.00	0.00	0.00	0.00	DOUTHIT 32-26HZ

Database:	edm5000p	Local Co-ordinate Reference:	Well DOUTHIT 32-26HZ
Company:	US ROCKIES REGION PLANNING	TVD Reference:	(17' RKB + 4934' GL) @ 4951.00ft
Project:	COLORADO NORTHERN ZONE - 83	MD Reference:	(17' RKB + 4934' GL) @ 4951.00ft
Site:	WELD_DOUTHIT 32-26HZ	North Reference:	True
Well:	DOUTHIT 32-26HZ	Survey Calculation Method:	Minimum Curvature
Wellbore:	DOUTHIT 32-26HZ		
Design:	DOUTHIT 32-26HZ (wp02)		

Planned Survey									
Measured Depth (ft)	Inclination (°)	Azimuth (°)	Vertical Depth (ft)	+N/-S (ft)	+E/-W (ft)	Vertical Section (ft)	Dogleg Rate (°/100ft)	Build Rate (°/100ft)	Turn Rate (°/100ft)
0.00	0.00	0.00	0.00	0.00	0.00	0.00	0.00	0.00	0.00
100.00	0.00	0.00	100.00	0.00	0.00	0.00	0.00	0.00	0.00
200.00	0.00	0.00	200.00	0.00	0.00	0.00	0.00	0.00	0.00
300.00	0.00	0.00	300.00	0.00	0.00	0.00	0.00	0.00	0.00
400.00	0.00	0.00	400.00	0.00	0.00	0.00	0.00	0.00	0.00
500.00	0.00	0.00	500.00	0.00	0.00	0.00	0.00	0.00	0.00
600.00	0.00	0.00	600.00	0.00	0.00	0.00	0.00	0.00	0.00
700.00	0.00	0.00	700.00	0.00	0.00	0.00	0.00	0.00	0.00
800.00	0.00	0.00	800.00	0.00	0.00	0.00	0.00	0.00	0.00
9 5/8"									
900.00	0.00	0.00	900.00	0.00	0.00	0.00	0.00	0.00	0.00
950.00	0.00	0.00	950.00	0.00	0.00	0.00	0.00	0.00	0.00
Start DLS 2.00 TFO 90.24									
1,000.00	1.00	90.24	1,000.00	0.00	0.44	-0.44	2.00	2.00	0.00
1,088.54	2.77	90.24	1,088.49	-0.01	3.35	-3.35	2.00	2.00	0.00
Start 5678.35 hold at 1088.54 MD									
1,100.00	2.77	90.24	1,099.93	-0.02	3.90	-3.90	0.00	0.00	0.00
1,200.00	2.77	90.24	1,199.82	-0.04	8.74	-8.74	0.00	0.00	0.00
1,300.00	2.77	90.24	1,299.70	-0.06	13.57	-13.57	0.00	0.00	0.00
1,400.00	2.77	90.24	1,399.58	-0.08	18.41	-18.41	0.00	0.00	0.00
1,500.00	2.77	90.24	1,499.46	-0.10	23.24	-23.24	0.00	0.00	0.00
1,600.00	2.77	90.24	1,599.35	-0.12	28.07	-28.07	0.00	0.00	0.00
1,700.00	2.77	90.24	1,699.23	-0.14	32.91	-32.91	0.00	0.00	0.00
1,800.00	2.77	90.24	1,799.11	-0.16	37.74	-37.74	0.00	0.00	0.00
1,900.00	2.77	90.24	1,899.00	-0.18	42.58	-42.58	0.00	0.00	0.00
2,000.00	2.77	90.24	1,998.88	-0.20	47.41	-47.41	0.00	0.00	0.00
2,100.00	2.77	90.24	2,098.76	-0.22	52.24	-52.25	0.00	0.00	0.00
2,200.00	2.77	90.24	2,198.65	-0.24	57.08	-57.08	0.00	0.00	0.00
2,300.00	2.77	90.24	2,298.53	-0.26	61.91	-61.91	0.00	0.00	0.00
2,400.00	2.77	90.24	2,398.41	-0.28	66.75	-66.75	0.00	0.00	0.00
2,500.00	2.77	90.24	2,498.30	-0.30	71.58	-71.58	0.00	0.00	0.00
2,600.00	2.77	90.24	2,598.18	-0.32	76.42	-76.42	0.00	0.00	0.00
2,700.00	2.77	90.24	2,698.06	-0.34	81.25	-81.25	0.00	0.00	0.00
2,800.00	2.77	90.24	2,797.95	-0.36	86.08	-86.08	0.00	0.00	0.00
2,900.00	2.77	90.24	2,897.83	-0.38	90.92	-90.92	0.00	0.00	0.00
3,000.00	2.77	90.24	2,997.71	-0.40	95.75	-95.75	0.00	0.00	0.00
3,100.00	2.77	90.24	3,097.59	-0.42	100.59	-100.59	0.00	0.00	0.00
3,200.00	2.77	90.24	3,197.48	-0.44	105.42	-105.42	0.00	0.00	0.00
3,300.00	2.77	90.24	3,297.36	-0.46	110.25	-110.26	0.00	0.00	0.00
3,400.00	2.77	90.24	3,397.24	-0.48	115.09	-115.09	0.00	0.00	0.00
3,500.00	2.77	90.24	3,497.13	-0.50	119.92	-119.92	0.00	0.00	0.00
3,600.00	2.77	90.24	3,597.01	-0.52	124.76	-124.76	0.00	0.00	0.00
3,699.11	2.77	90.24	3,696.00	-0.54	129.55	-129.55	0.00	0.00	0.00
PARKMAN									
3,700.00	2.77	90.24	3,696.89	-0.54	129.59	-129.59	0.00	0.00	0.00
3,800.00	2.77	90.24	3,796.78	-0.56	134.43	-134.43	0.00	0.00	0.00
3,900.00	2.77	90.24	3,896.66	-0.58	139.26	-139.26	0.00	0.00	0.00
4,000.00	2.77	90.24	3,996.54	-0.60	144.09	-144.10	0.00	0.00	0.00
4,100.00	2.77	90.24	4,096.43	-0.62	148.93	-148.93	0.00	0.00	0.00
4,154.64	2.77	90.24	4,151.00	-0.63	151.57	-151.57	0.00	0.00	0.00
SUSSEX									
4,200.00	2.77	90.24	4,196.31	-0.64	153.76	-153.76	0.00	0.00	0.00
4,300.00	2.77	90.24	4,296.19	-0.66	158.60	-158.60	0.00	0.00	0.00
4,400.00	2.77	90.24	4,396.07	-0.68	163.43	-163.43	0.00	0.00	0.00

Database:	edm5000p	Local Co-ordinate Reference:	Well DOUTHIT 32-26HZ
Company:	US ROCKIES REGION PLANNING	TVD Reference:	(17' RKB + 4934' GL) @ 4951.00ft
Project:	COLORADO NORTHERN ZONE - 83	MD Reference:	(17' RKB + 4934' GL) @ 4951.00ft
Site:	WELD_DOUTHIT 32-26HZ	North Reference:	True
Well:	DOUTHIT 32-26HZ	Survey Calculation Method:	Minimum Curvature
Wellbore:	DOUTHIT 32-26HZ		
Design:	DOUTHIT 32-26HZ (wp02)		

Planned Survey									
Measured Depth (ft)	Inclination (°)	Azimuth (°)	Vertical Depth (ft)	+N/-S (ft)	+E/-W (ft)	Vertical Section (ft)	Dogleg Rate (°/100ft)	Build Rate (°/100ft)	Turn Rate (°/100ft)
4,500.00	2.77	90.24	4,495.96	-0.70	168.26	-168.27	0.00	0.00	0.00
4,600.00	2.77	90.24	4,595.84	-0.72	173.10	-173.10	0.00	0.00	0.00
4,630.19	2.77	90.24	4,626.00	-0.72	174.56	-174.56	0.00	0.00	0.00
SHANNON									
4,700.00	2.77	90.24	4,695.72	-0.74	177.93	-177.93	0.00	0.00	0.00
4,800.00	2.77	90.24	4,795.61	-0.76	182.77	-182.77	0.00	0.00	0.00
4,900.00	2.77	90.24	4,895.49	-0.78	187.60	-187.60	0.00	0.00	0.00
5,000.00	2.77	90.24	4,995.37	-0.80	192.44	-192.44	0.00	0.00	0.00
5,100.00	2.77	90.24	5,095.26	-0.82	197.27	-197.27	0.00	0.00	0.00
5,200.00	2.77	90.24	5,195.14	-0.84	202.10	-202.11	0.00	0.00	0.00
5,300.00	2.77	90.24	5,295.02	-0.86	206.94	-206.94	0.00	0.00	0.00
5,400.00	2.77	90.24	5,394.91	-0.88	211.77	-211.77	0.00	0.00	0.00
5,500.00	2.77	90.24	5,494.79	-0.90	216.61	-216.61	0.00	0.00	0.00
5,600.00	2.77	90.24	5,594.67	-0.92	221.44	-221.44	0.00	0.00	0.00
5,700.00	2.77	90.24	5,694.55	-0.94	226.27	-226.28	0.00	0.00	0.00
5,800.00	2.77	90.24	5,794.44	-0.96	231.11	-231.11	0.00	0.00	0.00
5,900.00	2.77	90.24	5,894.32	-0.98	235.94	-235.94	0.00	0.00	0.00
6,000.00	2.77	90.24	5,994.20	-1.00	240.78	-240.78	0.00	0.00	0.00
6,100.00	2.77	90.24	6,094.09	-1.02	245.61	-245.61	0.00	0.00	0.00
6,200.00	2.77	90.24	6,193.97	-1.04	250.45	-250.45	0.00	0.00	0.00
6,300.00	2.77	90.24	6,293.85	-1.06	255.28	-255.28	0.00	0.00	0.00
6,400.00	2.77	90.24	6,393.74	-1.08	260.11	-260.12	0.00	0.00	0.00
6,500.00	2.77	90.24	6,493.62	-1.10	264.95	-264.95	0.00	0.00	0.00
6,600.00	2.77	90.24	6,593.50	-1.12	269.78	-269.78	0.00	0.00	0.00
6,700.00	2.77	90.24	6,693.39	-1.14	274.62	-274.62	0.00	0.00	0.00
6,766.89	2.77	90.24	6,760.20	-1.15	277.85	-277.85	0.00	0.00	0.00
Start DLS 8.00 TFO 179.95									
6,800.00	0.12	91.27	6,793.29	-1.15	278.69	-278.69	8.00	-8.00	3.13
6,900.00	7.88	270.17	6,892.98	-1.14	271.93	-271.93	8.00	7.76	178.90
6,992.98	15.32	270.18	6,984.00	-1.08	253.25	-253.25	8.00	8.00	0.01
GREENHORN									
7,000.00	15.88	270.18	6,990.76	-1.07	251.36	-251.37	8.00	8.00	0.00
7,027.43	18.07	270.18	7,017.00	-1.05	243.35	-243.36	8.00	8.00	0.00
NIOBARA									
7,100.00	23.88	270.18	7,084.73	-0.96	217.39	-217.39	8.00	8.00	0.00
7,200.00	31.88	270.19	7,173.05	-0.81	170.67	-170.67	8.00	8.00	0.00
7,300.00	39.88	270.19	7,254.01	-0.62	112.11	-112.11	8.00	8.00	0.00
7,335.93	42.75	270.19	7,281.00	-0.55	88.39	-88.39	8.00	8.00	0.00
CODELL									
7,400.00	47.88	270.19	7,326.04	-0.40	42.86	-42.86	8.00	8.00	0.00
7,500.00	55.88	270.19	7,387.72	-0.14	-35.75	35.75	8.00	8.00	0.00
7,507.69	56.49	270.19	7,392.00	-0.12	-42.14	42.14	8.00	8.00	0.00
HARTLAND									
7,600.00	63.88	270.19	7,437.86	0.14	-122.17	122.17	8.00	8.00	0.00
7,633.74	66.58	270.19	7,452.00	0.24	-152.80	152.80	8.00	8.00	0.00
LINCOLN - DOUTHIT 32-26HZ HEEL									
7,700.00	71.88	270.19	7,475.49	0.45	-214.74	214.74	8.00	8.00	0.00
7,800.00	79.88	270.19	7,499.87	0.77	-311.64	311.64	8.00	8.00	0.00
7,900.00	87.88	270.19	7,510.53	1.10	-410.98	410.98	8.00	8.00	0.00
7,931.29	90.38	270.19	7,511.00	1.20	-442.27	442.27	8.00	8.00	0.00
Start 4060.65 hold at 7931.29 MD - 7"									
8,000.00	90.38	270.19	7,510.55	1.43	-510.98	510.98	0.00	0.00	0.00
8,100.00	90.38	270.19	7,509.88	1.76	-610.97	610.98	0.00	0.00	0.00

Database:	edm5000p	Local Co-ordinate Reference:	Well DOUTHIT 32-26HZ
Company:	US ROCKIES REGION PLANNING	TVD Reference:	(17' RKB + 4934' GL) @ 4951.00ft
Project:	COLORADO NORTHERN ZONE - 83	MD Reference:	(17' RKB + 4934' GL) @ 4951.00ft
Site:	WELD_DOUTHIT 32-26HZ	North Reference:	True
Well:	DOUTHIT 32-26HZ	Survey Calculation Method:	Minimum Curvature
Wellbore:	DOUTHIT 32-26HZ		
Design:	DOUTHIT 32-26HZ (wp02)		

Planned Survey									
Measured Depth (ft)	Inclination (°)	Azimuth (°)	Vertical Depth (ft)	+N/-S (ft)	+E/-W (ft)	Vertical Section (ft)	Dogleg Rate (°/100ft)	Build Rate (°/100ft)	Turn Rate (°/100ft)
8,200.00	90.38	270.19	7,509.22	2.09	-710.97	710.97	0.00	0.00	0.00
8,300.00	90.38	270.19	7,508.55	2.42	-810.97	810.97	0.00	0.00	0.00
8,400.00	90.38	270.19	7,507.89	2.75	-910.96	910.97	0.00	0.00	0.00
8,500.00	90.38	270.19	7,507.22	3.08	-1,010.96	1,010.97	0.00	0.00	0.00
8,600.00	90.38	270.19	7,506.56	3.41	-1,110.96	1,110.96	0.00	0.00	0.00
8,700.00	90.38	270.19	7,505.89	3.74	-1,210.96	1,210.96	0.00	0.00	0.00
8,800.00	90.38	270.19	7,505.23	4.07	-1,310.95	1,310.96	0.00	0.00	0.00
8,900.00	90.38	270.19	7,504.56	4.40	-1,410.95	1,410.96	0.00	0.00	0.00
9,000.00	90.38	270.19	7,503.90	4.73	-1,510.95	1,510.96	0.00	0.00	0.00
9,100.00	90.38	270.19	7,503.23	5.06	-1,610.95	1,610.95	0.00	0.00	0.00
9,200.00	90.38	270.19	7,502.57	5.39	-1,710.94	1,710.95	0.00	0.00	0.00
9,300.00	90.38	270.19	7,501.90	5.72	-1,810.94	1,810.95	0.00	0.00	0.00
9,400.00	90.38	270.19	7,501.24	6.05	-1,910.94	1,910.95	0.00	0.00	0.00
9,500.00	90.38	270.19	7,500.57	6.38	-2,010.93	2,010.94	0.00	0.00	0.00
9,600.00	90.38	270.19	7,499.91	6.71	-2,110.93	2,110.94	0.00	0.00	0.00
9,700.00	90.38	270.19	7,499.24	7.04	-2,210.93	2,210.94	0.00	0.00	0.00
9,800.00	90.38	270.19	7,498.58	7.37	-2,310.93	2,310.94	0.00	0.00	0.00
9,900.00	90.38	270.19	7,497.91	7.70	-2,410.92	2,410.94	0.00	0.00	0.00
10,000.00	90.38	270.19	7,497.25	8.03	-2,510.92	2,510.93	0.00	0.00	0.00
10,100.00	90.38	270.19	7,496.58	8.36	-2,610.92	2,610.93	0.00	0.00	0.00
10,200.00	90.38	270.19	7,495.92	8.70	-2,710.91	2,710.93	0.00	0.00	0.00
10,300.00	90.38	270.19	7,495.25	9.03	-2,810.91	2,810.93	0.00	0.00	0.00
10,400.00	90.38	270.19	7,494.59	9.36	-2,910.91	2,910.92	0.00	0.00	0.00
10,500.00	90.38	270.19	7,493.92	9.69	-3,010.91	3,010.92	0.00	0.00	0.00
10,600.00	90.38	270.19	7,493.26	10.02	-3,110.90	3,110.92	0.00	0.00	0.00
10,700.00	90.38	270.19	7,492.59	10.35	-3,210.90	3,210.92	0.00	0.00	0.00
10,800.00	90.38	270.19	7,491.93	10.68	-3,310.90	3,310.92	0.00	0.00	0.00
10,900.00	90.38	270.19	7,491.26	11.01	-3,410.90	3,410.91	0.00	0.00	0.00
11,000.00	90.38	270.19	7,490.60	11.34	-3,510.89	3,510.91	0.00	0.00	0.00
11,100.00	90.38	270.19	7,489.93	11.67	-3,610.89	3,610.91	0.00	0.00	0.00
11,200.00	90.38	270.19	7,489.27	12.00	-3,710.89	3,710.91	0.00	0.00	0.00
11,300.00	90.38	270.19	7,488.60	12.33	-3,810.88	3,810.90	0.00	0.00	0.00
11,400.00	90.38	270.19	7,487.94	12.66	-3,910.88	3,910.90	0.00	0.00	0.00
11,500.00	90.38	270.19	7,487.27	12.99	-4,010.88	4,010.90	0.00	0.00	0.00
11,600.00	90.38	270.19	7,486.61	13.32	-4,110.88	4,110.90	0.00	0.00	0.00
11,700.00	90.38	270.19	7,485.94	13.65	-4,210.87	4,210.90	0.00	0.00	0.00
11,800.00	90.38	270.19	7,485.28	13.98	-4,310.87	4,310.89	0.00	0.00	0.00
11,900.00	90.38	270.19	7,484.61	14.31	-4,410.87	4,410.89	0.00	0.00	0.00
11,991.95	90.38	270.19	7,484.00	14.62	-4,502.81	4,502.84	0.00	0.00	0.00
DOUTHIT 32-26HZ BHL									

Design Targets									
Target Name	Dip Angle (°)	Dip Dir. (°)	TVD (ft)	+N/-S (ft)	+E/-W (ft)	Northing (ft)	Easting (ft)	Latitude	Longitude
- hit/miss target									
- Shape									
DOUTHIT 32-26HZ BI	0.00	0.00	7,484.00	14.62	-4,502.81	1,314,704.15	3,145,839.25	40.196081	-104.977927
- plan hits target center									
- Point									

Database:	edm5000p	Local Co-ordinate Reference:	Well DOUTHIT 32-26HZ
Company:	US ROCKIES REGION PLANNING	TVD Reference:	(17' RKB + 4934' GL) @ 4951.00ft
Project:	COLORADO NORTHERN ZONE - 83	MD Reference:	(17' RKB + 4934' GL) @ 4951.00ft
Site:	WELD_DOUTHIT 32-26HZ	North Reference:	True
Well:	DOUTHIT 32-26HZ	Survey Calculation Method:	Minimum Curvature
Wellbore:	DOUTHIT 32-26HZ		
Design:	DOUTHIT 32-26HZ (wp02)		

Casing Points					
Measured Depth (ft)	Vertical Depth (ft)	Name	Casing Diameter (")	Hole Diameter (")	
800.00	800.00	9 5/8"	9-5/8	12-1/4	
7,931.29	7,511.00	7"	7	8-3/4	

Formations					
Measured Depth (ft)	Vertical Depth (ft)	Name	Lithology	Dip (°)	Dip Direction (°)
3,699.11	3,696.00	PARKMAN		0.00	
4,154.64	4,151.00	SUSSEX		0.00	
4,630.19	4,626.00	SHANNON		0.00	
6,992.98	6,984.00	GREENHORN		0.00	
7,027.43	7,017.00	NIOBARA		0.00	
7,335.93	7,281.00	CODELL		0.00	
7,507.69	7,392.00	HARTLAND		0.00	
7,633.74	7,452.00	LINCOLN		0.00	

Plan Annotations				
Measured Depth (ft)	Vertical Depth (ft)	Local Coordinates		Comment
		+N/-S (ft)	+E/-W (ft)	
950.00	950.00	0.00	0.00	Start DLS 2.00 TFO 90.24
1,088.54	1,088.49	-0.01	3.35	Start 5678.35 hold at 1088.54 MD
6,766.89	6,760.20	-1.15	277.85	Start DLS 8.00 TFO 179.95
7,931.29	7,511.00	1.20	-442.27	Start 4060.65 hold at 7931.29 MD
11,991.95	7,484.00	14.62	-4,502.81	TD at 11991.95