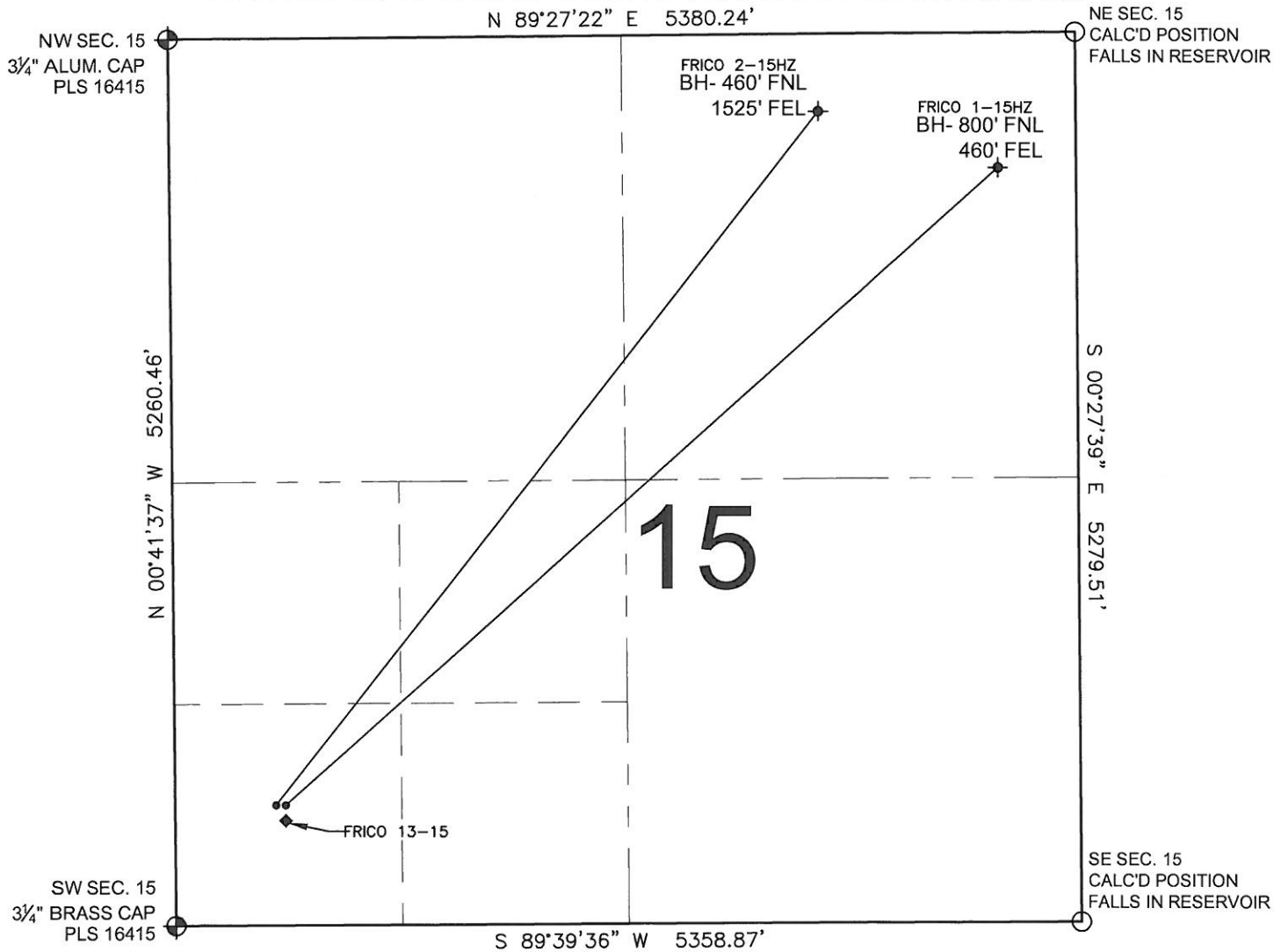


# PAD DRAWING - FRICO 2 PAD

SECTION 15, TOWNSHIP 3 NORTH, RANGE 65 WEST, 6TH P.M.



## LEGEND

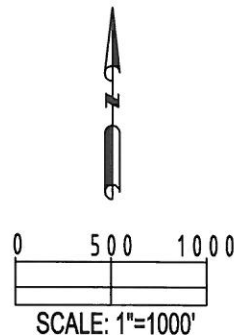
- = EXISTING MONUMENT   
 = BOTTOM HOLE   
 BH= BOTTOM HOLE  
 = PROPOSED WELL   
 = EXISTING WELL

## NOTES:

- THIS SURVEY WAS DONE BY GPS METHODS AND CONFORMS TO THE MINIMUM STANDARDS SET BY THE C.O.G.C.C., RULE NO. 215
- ELEVATIONS SHOWN AT THE WELL HEAD, AS WELL AS HORIZONTAL CONTROL, ARE BASED ON GPS-RTK VALUES DERIVED FROM DOING 2-HOUR STATIC GPS SESSIONS AND REDUCTIONS USING O.P.U.S. SOLUTIONS.  
VERTICAL = NAVD88; HORIZONTAL = NAD83/92
- THE BEARINGS SHOWN HEREON ARE BASED ON GPS OBSERVATIONS BETWEEN THE MONUMENTS SHOWN HEREON AS FOUND ON THE FIELD DATE BELOW.
- DISTANCES SHOWN ARE AT GROUND LEVEL, AS MEASURED IN THE FIELD, WITH TIES TO WELLS MEASURED AT A PERPENDICULAR TO SECTION LINES.

## NOTES:

- FRICO 2-15HZ TO BE AT 714' FSL, 640' FWL.  
 BOTTOM HOLE AT 460' FNL & 1525' FEL.  
 FRICO 1-15HZ TO BE AT 714' FSL, 656' FWL.  
 BOTTOM HOLE AT 800' FNL & 460' FEL.  
 FRICO 13-15 IS 665' FSL, 656' FWL.



## REVISIONS

INITIAL	DATE
SMF	11-17-10

PREPARED BY:

**PFS**

Petroleum Field Services, LLC  
1801 W. 13th Ave.  
Denver, CO 80204



KERR-MCGEE OIL & GAS ONSHORE LP

FIELD DATE:  
11-02-10

DRAWING DATE:  
11-10-10

BY:  
SMF

PAD NAME:  
FRICO 2 PAD

SURFACE LOCATION:

WELD COUNTY, COLORADO  
SW 1/4 SW 1/4, SEC. 15, T3N, R65W