

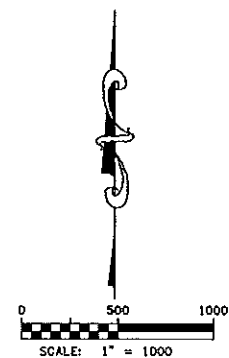
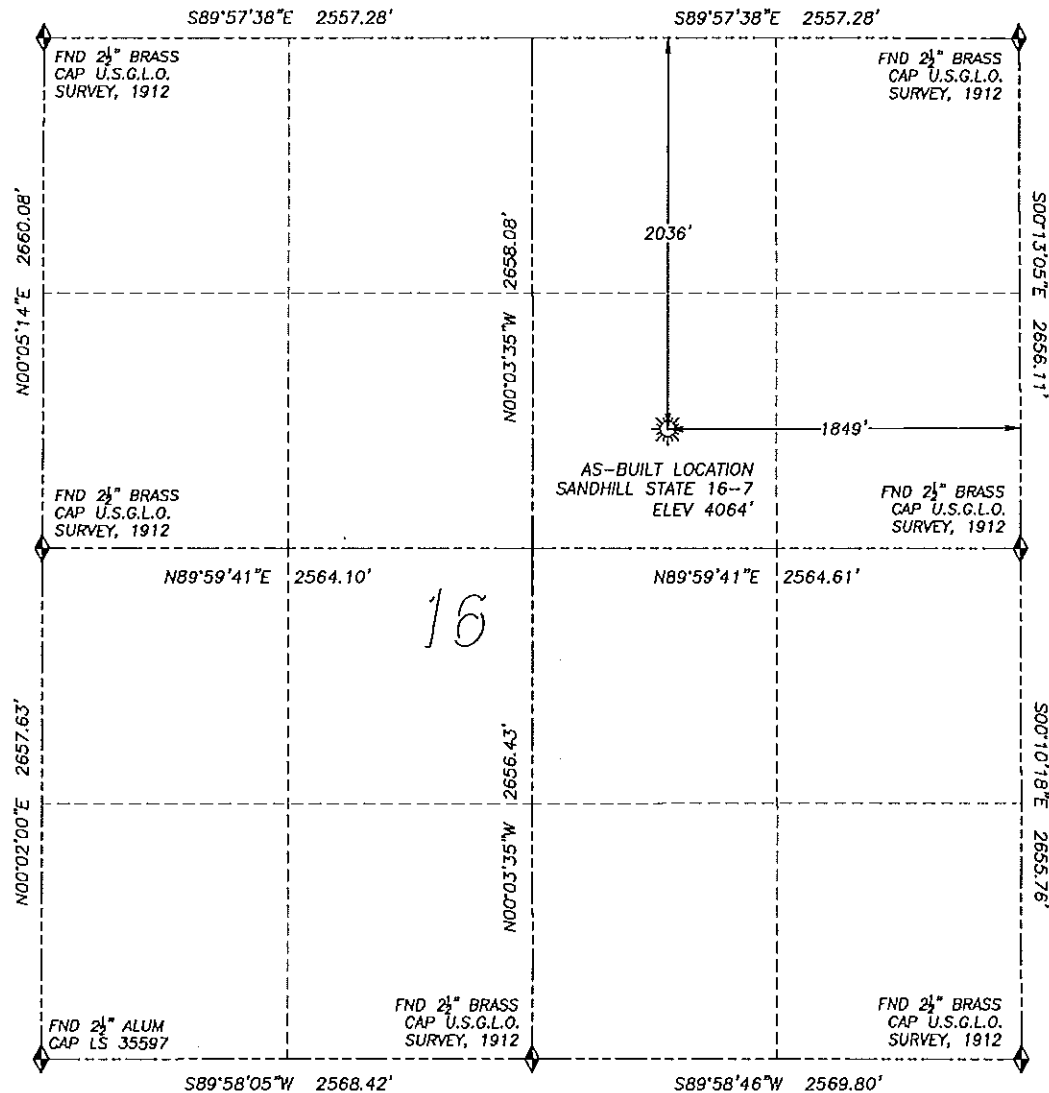
DALEY LAND SURVEYING, INC.

PARKER, CO. 80134

303 953 9841

# WELL AS-BUILT SURVEY SANDHILL STATE 16-7

SECTION 16, TOWNSHIP 2 SOUTH, RANGE 46 WEST OF THE 6TH PRINCIPAL MERIDIAN



## LEGEND

- ◆ FOUND MONUMENT AS DESCRIBED
- ☀ PROPOSED WELL
- EXISTING WELL
- BOTTOM HOLE
- ⊗ ABANDONED WELL

## NAD 83 LATITUDE AND LONGITUDE

SANDHILL STATE 16--7  
 LATITUDE: N39.88433  
 LONGITUDE: W102.52781'  
 ELEVATION: 4064'  
 PDOP 1.3  
 2036' FNL, 1849' FEL

IN ACCORDANCE WITH A REQUEST FROM DEBBY POWELL OF McELVAIN OIL & GAS PROPERTIES INC., DALEY LAND SURVEYING, INC. HAS DETERMINED THE SURFACE LOCATION OF THE SANDHILL STATE 16--7 WELL TO BE 2036' FNL, 1849' FEL, AS MEASURED AT NINETY (90) DEGREES FROM THE SECTION LINES OF SECTION 16, TOWNSHIP 2 SOUTH, RANGE 46 WEST OF THE 6TH PRINCIPAL MERIDIAN, YUMA COUNTY, COLORADO.

I HEREBY CERTIFY THAT THIS AS-BUILT SURVEY WAS PREPARED BY ME OR UNDER MY DIRECT SUPERVISION, THAT THE WORK WAS COMPLETED ON 01/18/2011 FOR AND ON BEHALF OF McELVAIN OIL & GAS PROPERTIES INC., AND THAT THIS MAP DOES NOT REPRESENT A BOUNDARY SURVEY, IT IS NOT A LAND SURVEY PLAT, NOR IS IT TO BE RELIED UPON FOR OR AN IMPROVEMENT SURVEY PLAT AND IT IS NOT TO BE RELIED UPON FOR THE ESTABLISHMENT OF FENCE, BUILDING OR OTHER FUTURE IMPROVEMENT LINES.

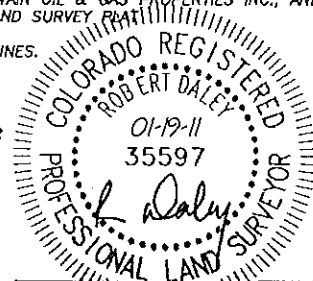
## NOTES:

- 1) BASIS OF BEARING FOR THIS MAP IS ASSUMED AND BASED UPON GPS OBSERVATIONS MADE BETWEEN MONUMENTS LOCATED AT THE NORTHEAST CORNER AND EAST QUARTER CORNER OF SECTION 16, T.2S., R.46W., AND ALL BEARINGS SHOWN HEREON ARE RELATIVE THERETO.
- 2) HORIZONTAL DATUM IS NAD83.
- 3) VERTICAL DATUM IS NAVD83. ELEVATIONS ARE DERIVED FROM GPS--RTK OBSERVATIONS PROCESSED THROUGH OPUS, UTILIZING THE GEOID03 MODEL.
- 4) SURFACE USE: OPEN FIELD

QUARTER/QUARTER: SW4/NE4

NEAREST APPARENT PROPERTY LINE:  
 1849'± EAST

NOTICE: According to Colorado law you MUST commence any legal action based upon any defect in this W.L.C. within three years after you first discover such defect. In no event may any action based upon any such defect in this W.L.C. be commenced more than ten years from the date of the certification shown herein.



FOR AND ON BEHALF OF  
 DALEY LAND SURVEYING, INC.,  
 Robert Daley, PLS 35597