

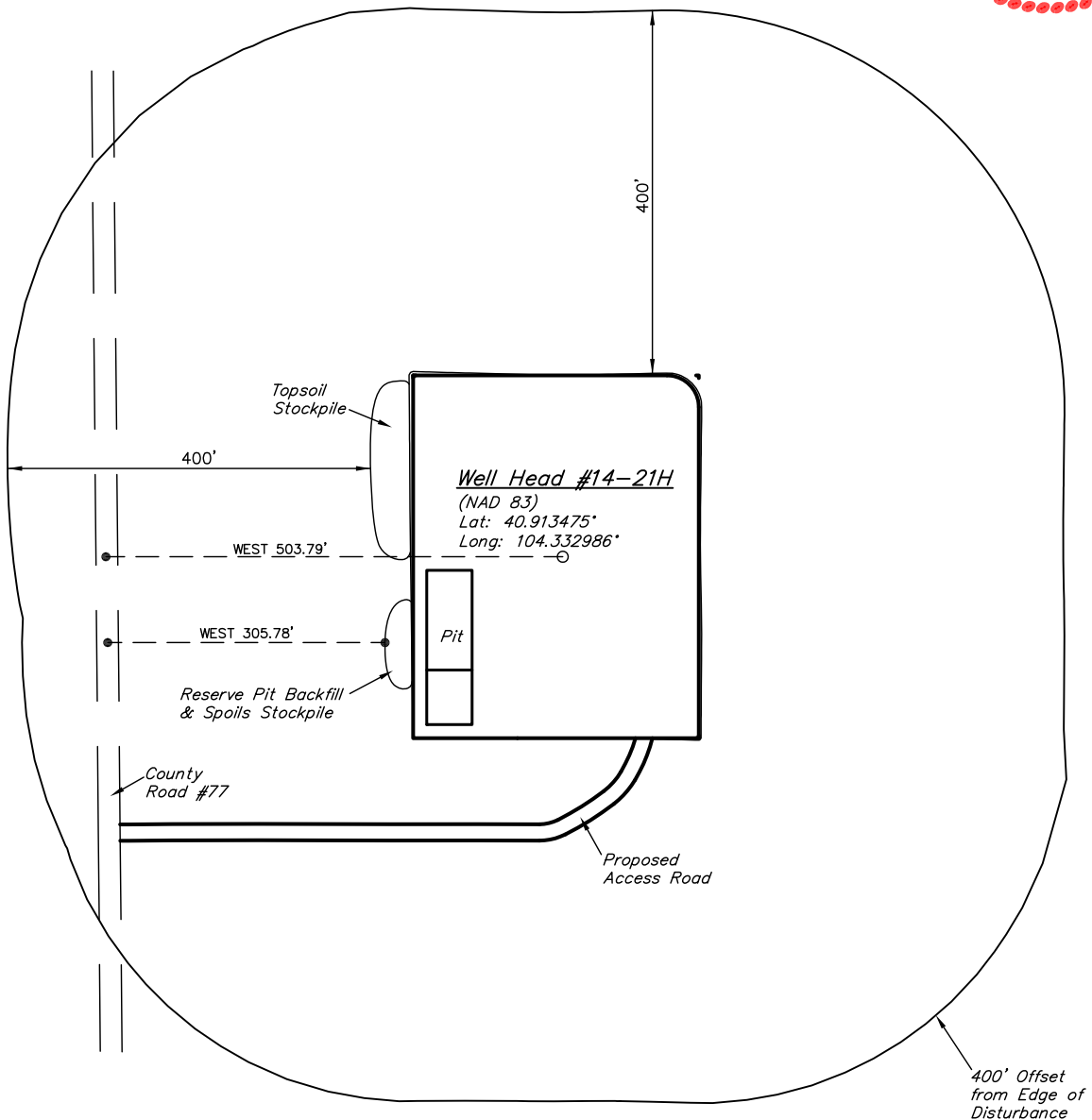
EOG RESOURCES, INC.

ADDENDUM TO LEGAL PLAT FOR

GARDEN CREEK #14-21H
SECTION 21, T11N, R62W, 6th P.M.
895' FNL 502' FWL



SCALE: 1" = 200'
DATE: 09-20-10
DRAWN BY: K.G.

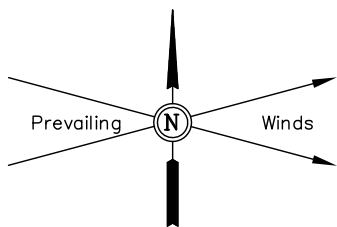


EOG RESOURCES, INC.

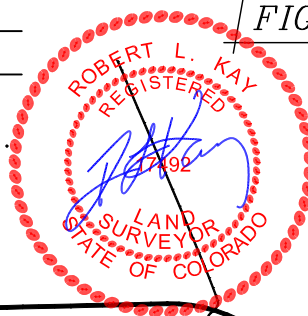
CONSTRUCTION LAYOUT FOR

GARDEN CREEK #14-21H
SECTION 21, T11N, R62W, 6th P.M.
895' FNL 502' FWL

FIGURE #1



SCALE: 1" = 60'
DATE: 09-20-10
DRAWN BY: K.G.
REVISED: 09-24-10



Approx.
Top of
Cut Slope

F-2.2'
El. 19.7'

C-3.0'
El. 24.9'

GRADE
El. 21.9'

Sta. 4+00

Round Corners
as Needed

Cut/Fill
Transition Line

NOTE:
Flare Pit is to be
located a min. of 100'
from the Well Head.

Topsoil Stockpile

40'
30'
FLARE PIT
(4' Deep)

AREA OF MAX. DISTURBANCE

C-1.1'
El. 23.0'

150' Sta. 2+00

F-1.0'
El. 20.9'

C-4.9'
(Btm. Pit)

C-1.8'
El. 23.7'

Total Pit Capacity
= 3,920 Bbls.±
Total Pit Volume
= 820 Cu. Yds

Reserve Pit Backfill
& Spoils Stockpile

RESERVE PITS
(3' Deep)
1 1/2:1 Slope

S54°29'31"E - 4976.76'
(To Bottom Hole)

Sta. 1+00

Approx.
Toe of
Fill Slope

C-3.3'
(Btm. Pit)

C-0.1'
El. 22.0'

Sta. 0+00

F-1.5'
El. 20.4'

C-0.3'
El. 22.2'

C-0.6'
El. 22.5'

Proposed
Access Road

Elev. Ungraded Ground At Loc. Stake = 5223.0'
FINISHED GRADE ELEV. AT LOC. STAKE = 5221.9'

UINTAH ENGINEERING & LAND SURVEYING
85 So. 200 East * Vernal, Utah 84078 * (435) 789-1017

EOG RESOURCES, INC.

FIGURE #2

CONSTRUCTION LAYOUT CROSS SECTION FOR

GARDEN CREEK #14-21H

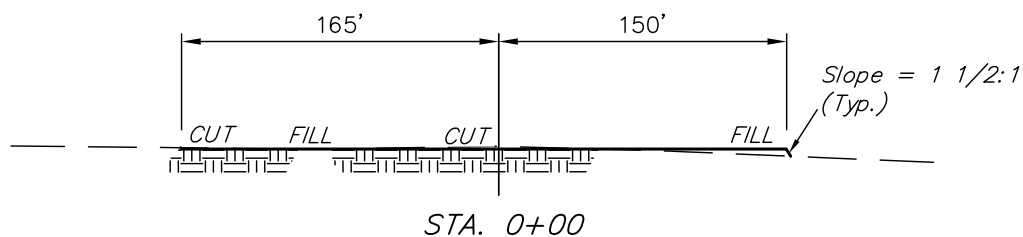
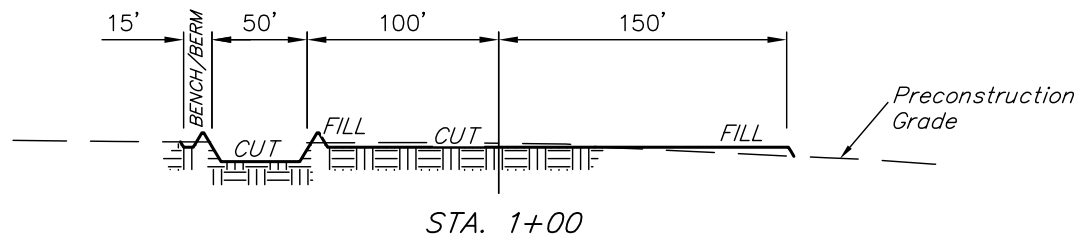
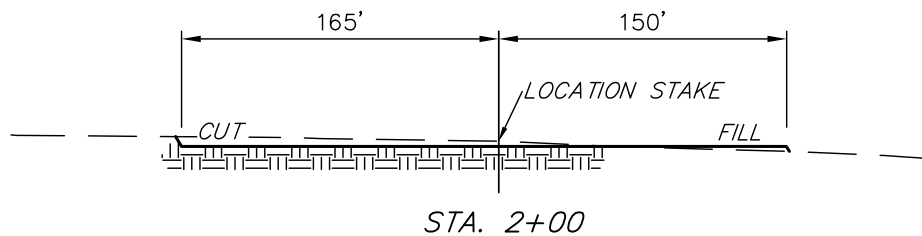
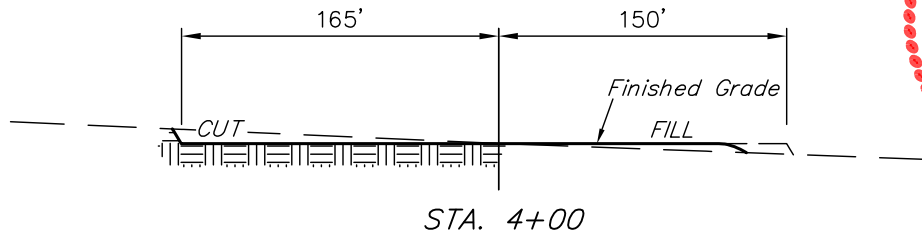
SECTION 21, T11N, R62W, 6th P.M.

895' FNL 502' FWL

X-Section
Scale
1" = 100'

DATE: 09-20-10

DRAWN BY: K.G.



NOTE:

Topsoil should not be Stripped Below Finished Grade on Substructure Area.

APPROXIMATE ACREAGES
WELL SITE DISTURBANCE = ± 3.640 ACRES
ACCESS ROAD DISTURBANCE = ± 0.418 ACRES
TOTAL = ± 4.058 ACRES

* NOTE:
FILL QUANTITY INCLUDES 5% FOR COMPACTION

APPROXIMATE YARDAGES

(6") Topsoil Stripping = 2,420 Cu. Yds.
Remaining Location = 2,710 Cu. Yds.
TOTAL CUT = 5,130 CU.YDS.
FILL = 2,300 CU.YDS.

EXCESS MATERIAL = 2,830 Cu. Yds.
Topsoil & Pit Backfill = 2,830 Cu. Yds.
(1/2 Pit Vol.)
EXCESS UNBALANCE = 0 Cu. Yds.
(After Interim Rehabilitation)

UINTAH ENGINEERING & LAND SURVEYING
85 So. 200 East * Vernal, Utah 84078 * (435) 789-1017

EOG RESOURCES, INC.

TYPICAL RIG LAYOUT FOR
GARDEN CREEK #14-21H
SECTION 21, T11N, R62W, 6th P.M.
895' FNL 502' FWL

FIGURE #3



SCALE: 1" = 60'
DATE: 09-20-10
DRAWN BY: K.G.

NOTE:
Flare Pit is to be
located a min. of 100'
from the Well Head.

